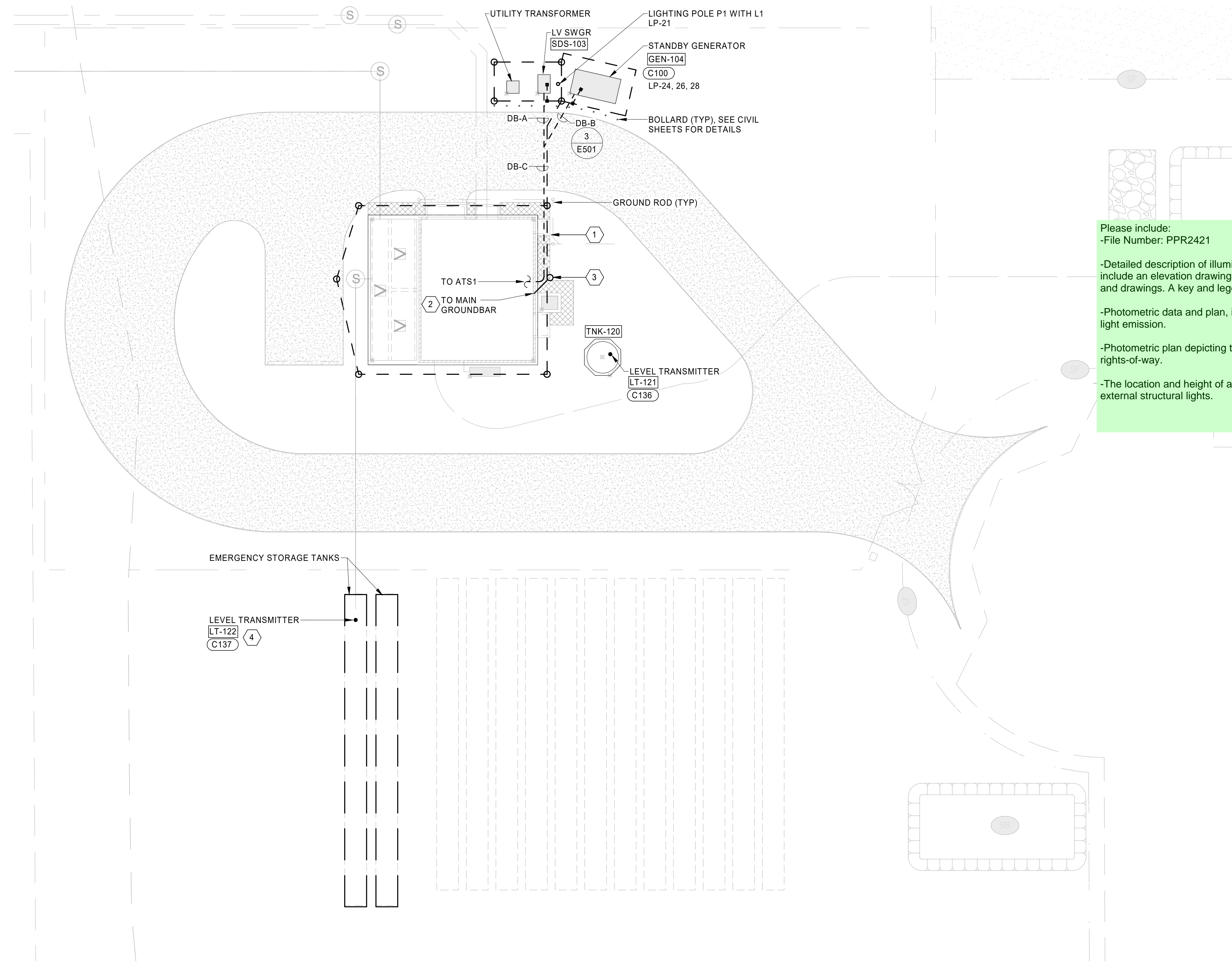


GENERAL NOTES:

1. SEE E601 FOR AREA & ROOM CLASSIFICATION SCHEDULE.
2. PROVIDE LIGHTNING PROTECTION FOR BUILDING AND STANDBY GENERATOR PER SPECIFICATION 26 4113.
3. BOND LIGHTNING PROTECTION SYSTEM TO BUILDING GROUNDING RING.

KEYNOTES: (#)

1. #4/0 BARE COPPER GROUND RING CONDUCTOR, MINIMUM 30" BELOW GRADE.
2. CONNECT GROUNDING ELECTRODE CONDUCTOR TO MAIN GROUNDING BAR IN ELECTRICAL ROOM. SEE 1/E501.
3. GROUND ROD WITH TEST WELL.
4. SEE P401 FOR EXACT INSTRUMENT LOCATION AND MOUNTING INFORMATION.



Please include:
 -File Number: PPR2421

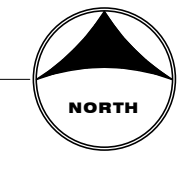
-Detailed description of illuminating devices, fixtures, lamps, supports, reflectors, installation, and electrical details and other devices to include an elevation drawing. The description may include, but is not limited to, manufacturers specifications and catalog cuts sheets, and drawings. A key and legend may be required at the discretion of the PCD.

-Photometric data and plan, including maps and diagrams furnished by manufacturers or similar showing the angle of the cut off or light emission.

-Photometric plan depicting the lighting levels (foot candles) throughout the property, at property lines, and along any adjacent rights-of-way.

-The location and height of all existing and proposed illuminating devices, including but not limited to, all parking area lights and external structural lights.

1 ELECTRICAL SITE PLAN
 SCALE: 1" = 20'-0"



90% CONSTRUCTION DOCUMENTS

DRAWN BY: Author JOB DATE: 2024
 APPROVED: Approver JOB NUMBER: 201662.07
 CAD DATE: 6/24/2024 4:50:06 PM
 CAD FILE: C:\Users\kbargender\Documents\201662.07_MEP_v21_kbarg.rvt

BAR IS ONE INCH ON OFFICIAL DRAWINGS
 0 [redacted] 1"
 IF NOT ONE INCH, ADJUST SCALE ACCORDINGLY

NO.	DATE	BY	REVISION DESCRIPTION

HRGreen
 HR GREEN - COLORADO SPRINGS
 1975 RESEARCH PARKWAY | SUITE 230
 COLORADO SPRINGS, CO 80920
 PHONE: 719.300.4140
 FAX: 713.965.0044

D.R. HORTON
 America's Builder

D.R. HORTON - GRANDVIEW RESERVE
 SANITARY SEWER LIFT STATION
 EL PASO COUNTY
 PEYTON, COLORADO

ELECTRICAL
 ELECTRICAL SITE PLAN

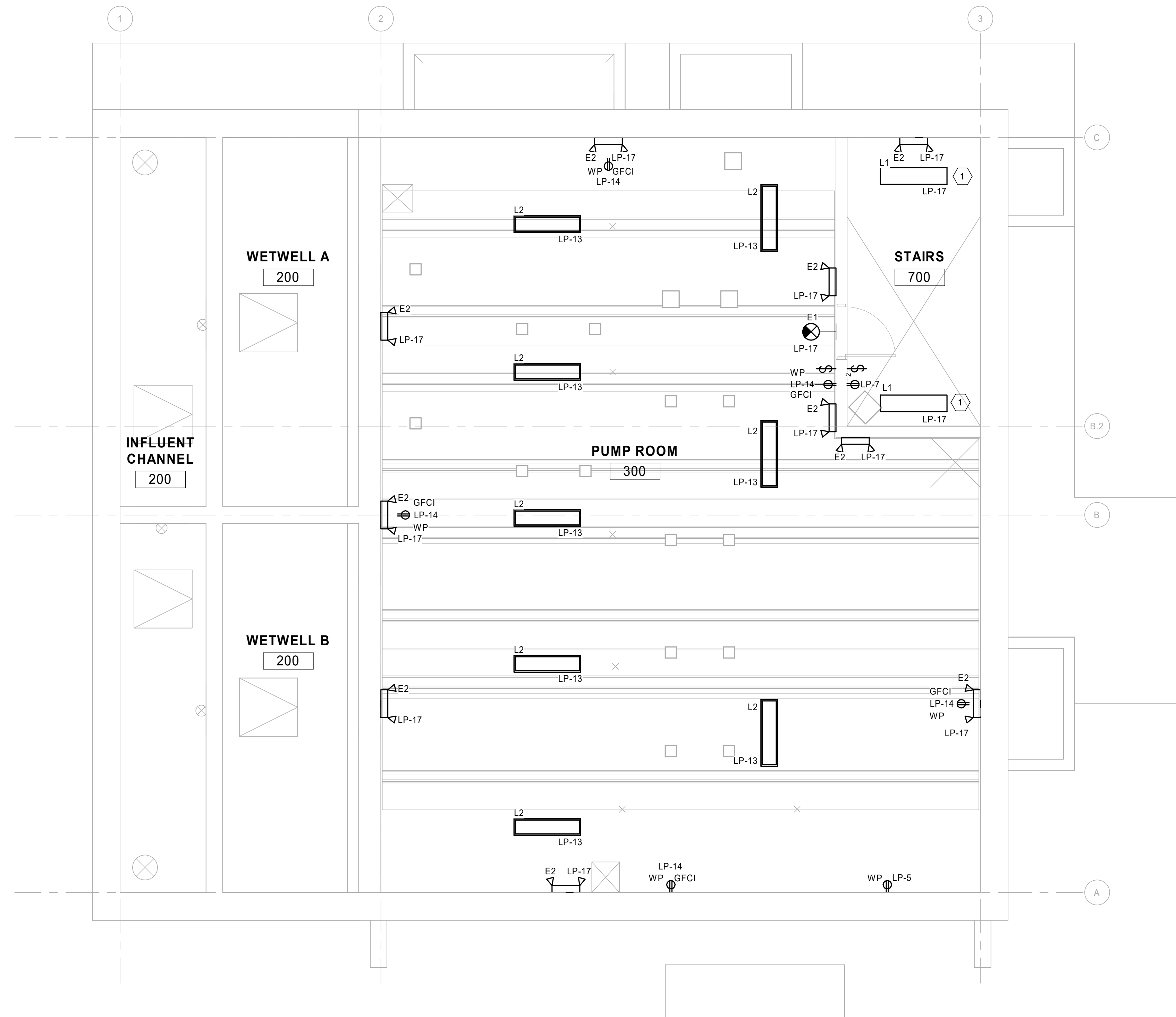
SHEET
E100

GENERAL NOTES:

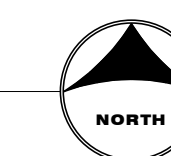
1. SEE E601 FOR AREA & ROOM CLASSIFICATION SCHEDULE.
2. E1 SHALL BE MOUNTED 8'-0" AFF, UNLESS OTHERWISE NOTED.
3. E2 SHALL BE MOUNTED 8'-0" AFF, UNLESS OTHERWISE NOTED.
4. L2 SHALL BE MOUNTED 14' AFF, UNLESS OTHERWISE NOTED.

KEYNOTES: #

1. MOUNT L1 FIXTURE UNDER STAIR PLATFORM, 14' AFF.



1 LOWER LEVEL LIGHTING PLAN
SCALE: 1/4" = 1'-0"



90% CONSTRUCTION DOCUMENTS

DRAWN BY: Author JOB DATE: 2024
 APPROVED: Approver JOB NUMBER: 201662.07
 CAD DATE: 6/24/2024 4:50:09 PM
 CAD FILE: C:\Users\kbargender\Documents\201662.07_MEP_v21_kbarg.rvt

BAR IS ONE INCH ON OFFICIAL DRAWINGS
 0 IF NOT ONE INCH, ADJUST SCALE ACCORDINGLY

NO.	DATE	BY	REVISION DESCRIPTION



HR GREEN - COLORADO SPRINGS
 1975 RESEARCH PARKWAY | SUITE 230
 COLORADO SPRINGS, CO 80920
 PHONE: 719.300.4140
 FAX: 713.965.0044

D.R. HORTON - GRANDVIEW RESERVE
 SANITARY SEWER LIFT STATION
 EL PASO COUNTY
 PEYTON, COLORADO



ELECTRICAL
 LOWER LEVEL LIGHTING PLAN

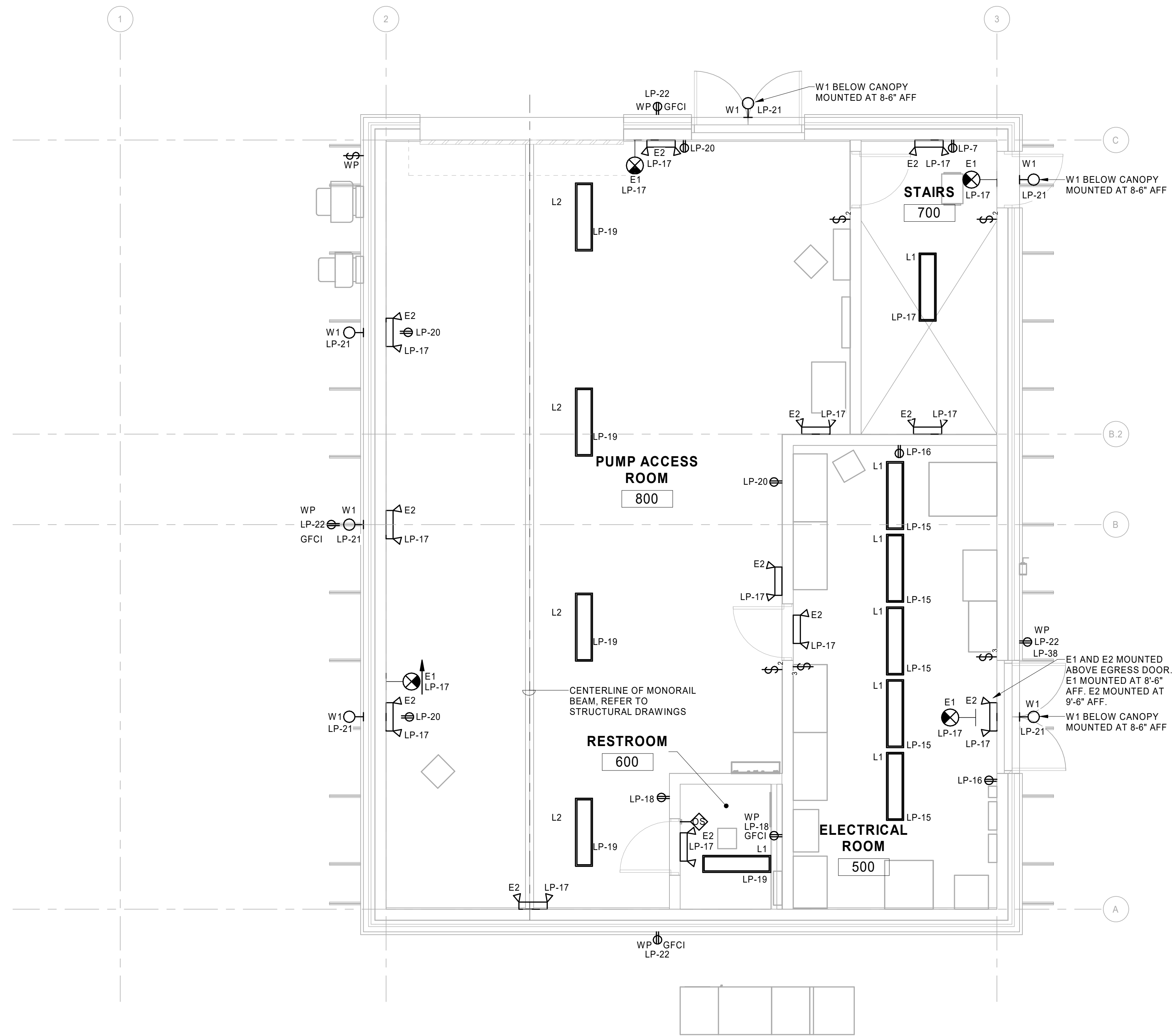
SHEET
E103

GENERAL NOTES:

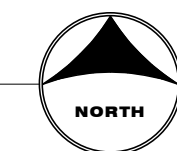
1. SEE E601 FOR AREA & ROOM CLASSIFICATION SCHEDULE.
2. 1 SHALL BE MOUNTED 8'-0" AFF, UNLESS OTHERWISE NOTED.
3. E2 SHALL BE MOUNTED 8'-0" AFF, UNLESS OTHERWISE NOTED.
4. L1 SHALL BE MOUNTED 10' AFF, UNLESS OTHERWISE NOTED.
5. L2 SHALL BE MOUNTED 12' AFF, UNLESS OTHERWISE NOTED.
6. W1 SHALL BE MOUNTED 10' AFF, UNLESS OTHERWISE NOTED.

KEYNOTES: #

1. ADD NOTES HERE.



1 GROUND LEVEL LIGHTING PLAN
SCALE: 1/4" = 1'-0"



90% CONSTRUCTION DOCUMENTS

DRAWN BY: Author JOB DATE: 2024
 APPROVED: Approver JOB NUMBER: 201662.07
 CAD DATE: 6/24/2024 4:50:10 PM
 CAD FILE: C:\Users\kbargender\Documents\201662.07_MEP_v21_kbarg.rvt

BAR IS ONE INCH ON OFFICIAL DRAWINGS
 0 IF NOT ONE INCH, ADJUST SCALE ACCORDINGLY

NO.	DATE	BY	REVISION DESCRIPTION



HR GREEN - COLORADO SPRINGS
 1975 RESEARCH PARKWAY | SUITE 230
 COLORADO SPRINGS, CO 80920
 PHONE: 719.300.4140
 FAX: 713.965.0044

D.R. HORTON - GRANDVIEW RESERVE
 SANITARY SEWER LIFT STATION
 EL PASO COUNTY
 PEYTON, COLORADO



ELECTRICAL
 GROUND LEVEL LIGHTING PLAN

SHEET
E104