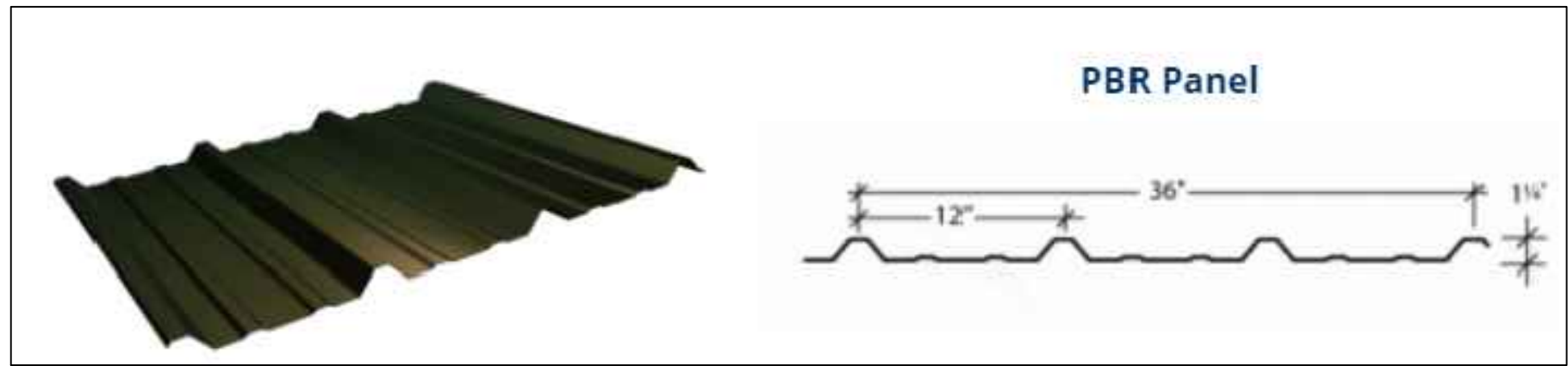


SCREEN FENCE DETAIL
NOT TO SCALE



PLANT LIST				
QTY	ABVR	COMMON AND SCIENTIFIC NAME	PLANTING SIZE	PLANTING REQUIREMENTS
DECIDUOUS TREES				
3	BUR	BUR OAK	2" CAL.	FULL CROWN, B&B, STAKED
		Quercus macrocarpa	SINGLE TRUNK	SPECIMEN QUALITY
47	SKH	SKYLINE HONEYLOCUST	2" CAL.	FULL CROWN, B&B, STAKED
		Gleditsia triacanthos inermis 'Skyline'	SINGLE TRUNK	SPECIMEN QUALITY
49	CHB	COMMON HACKBERRY	2" CAL.	FULL CROWN, B&B, STAKED
		Celtis occidentalis	SINGLE TRUNK	SPECIMEN QUALITY
ORNAMENTAL TREES				
9	RAC	RADIANT CRABAPPLE	1 1/2" CAL.	STRAIGHT TRUNK, B&B
		Malus sp. 'Radiant'	SINGLE TRUNK	SPECIMEN QUALITY
EVERGREEN TREES				
19	AUP	AUSTRIAN PINE	6'-10' HT.	FULL FORM, B&B
		Pinus niera	SEE PLAN	SPECIMEN QUALITY, GUYED
23	POP	PONDEROSA PINE	6'-10' HT.	FULL FORM, B&B
		Pinus ponderosa	SEE PLAN	SPECIMEN QUALITY, GUYED
26	SCP	SCOTCH PINE	6'-8' HT.	FULL FORM, B&B
		Pinus sylvestris	SEE PLAN	SPECIMEN QUALITY, GUYED
DECIDUOUS SHRUBS				
13	FNB	FERNBUSH	5 GAL.	SPACING 60" O.C.
		Chamaebatiaria millefolium	18"-24" HT.	5 CANES MIN.
40	RUS	RUSSIAN SAGE	5 GAL.	SPACING 36" O.C.
		Perovskia atriplicifolia	18"-24" HT.	5 CANES MIN.
ORNAMENTAL GRASSES				
74	BBS	BIG BLUESTEM	1 GAL.	SPACING 36" O.C.
		Andropogon gerardii	ESTABLISHED	
PERENNIAL FLOWERS				
12	RPC	RED PRAIRIE CONEFLOWER	1 GAL.	SPACING 20" O.C.
		Ratibida columnifera pulcherrima	ESTABLISHED	
MATURE SIZE				
65x65 FEET				
45x35 FEET				
55x45 FEET				
20x15 FEET				
40X30 FEET				
60X30 FEET				
30x20 FEET				
5X5 FEET				
4X3 FEET				
5X3 FEET				
20x20 INCHES				

LEGEND

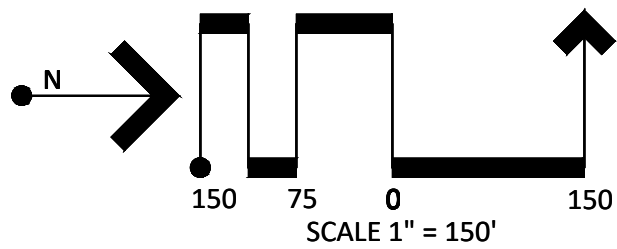
- 7'-8" SCREEN FENCE
- NATIVE SHOTGUN SEED MIX
- LANDSCAPE ROCK
- DECIDUOUS TREE
- EVERGREEN TREE
- ORNAMENTAL TREE
- DECIDUOUS SHRUBS
- ORNAMENAL GRASSES
- PERENNIAL FLOWERS

LANDSCAPE NOTES

- THIS LANDSCAPE ARCHITECTURAL SITE PLAN IS TO BE USED IN CONJUNCTION WITH THE CIVIL, IRRIGATION, ARCHITECTURAL, MECHANICAL AND ELECTRICAL PLANS TO FORM COMPLETE INFORMATION REGARDING THIS SITE.
- LANDSCAPE CONSTRUCTION SHALL CONFORM TO ALL APPLICABLE STATE AND LOCAL CODES AND SPECIFICATIONS.
- ALL MATERIAL AND WORKMANSHIP SHALL BE GUARANTEED FOR ONE YEAR, FROM DATE OF FINAL ACCEPTANCE.
- LANDSCAPE CONTRACTOR SHALL EXAMINE THE SITE CONDITIONS UNDER WHICH THE WORK IS TO BE PERFORMED AND NOTIFY THE GENERAL CONTRACTOR IN WRITING OF UNSATISFACTORY CONDITIONS. DO NOT PROCEED UNTIL CONDITIONS HAVE BEEN CORRECTED.
- BEFORE COMMENCING WORK, CONTACT APPROPRIATE UTILITY COMPANIES FOR UTILITY LOCATIONS, AND COORDINATE WITH GENERAL CONTRACTOR IN REGARD TO LOCATION OF PROPOSED UTILITIES, IRRIGATION SLEEVES, CONDUITS, ETC.
- ALL PLANT MATERIALS SHALL MEET OR EXCEED SIZE IN SCHEDULES.
- OWNER'S REPRESENTATIVE RESERVES THE RIGHT TO REFUSE PLANT MATERIALS WHICH DO NOT MEET THE QUALITY REQUIRED FOR THE PROJECT. ALL DECIDUOUS TREES SHALL HAVE FULL, WELL-SHAPED HEADS, ALL EVERGREENS SHALL BE UNSHEARED AND FULL TO THE GROUND. PLANTING PROCEDURES SHALL CONFORM TO DETAILS.
- ALL TREE AND SHRUB BED LOCATIONS ARE TO BE STAKED OUT ON SITE FOR APPROVAL BY OWNER'S REPRESENTATIVE PRIOR TO INSTALLATION.
- ROCK MULCH: INSTALL 3-INCHES OF 1 1/2", LOCALLY AVAILABLE, WASHED RIVER ROCK MULCH IN ALL SHRUB BEDS OVER TYPAR 3301 WEED MAT OR APPROVED EQUAL, AFTER APPLYING PRE-EMERGENT HERBICIDE.
- ALL B&B PLANT MATERIAL SHALL HAVE ALL WIRE, TWINE OR OTHER CONTAINMENT MATERIAL, EXCEPT FOR THE BURLAP, REMOVED FROM THE TRUNK AND ROOT BALL OF THE PLANT PRIOR TO PLANTING.
- GROUND COVER SHALL BE A NATIVE SHOTGUN MIX CONTAINING 20% BIG BLUESTEM, 10% BLUE GRAMA, 10% GREEN NEEDLEGRASS, 20% WESTERN WHEATGRASS, 10% SIDEOATS GRAMA, 10% SWITCHGRASS, 10% PRAIRIE SANDREED, AND YELLOW INDIANGRASS.
- TOPSOIL SHOULD BE STRIPPED TO A DEPTH OF 6 INCHES AND ALL STOCKPILES SHOULD HAVE SIDE SLOPES NO STEEPER THAN 3:1 AND SEEDED.
- ALL DISTURBED AREAS SHOULD BE SEEDED AND MULCHED WITH WEED FREE HAY MULCH AT 4,000 LBS/ACRE. ALL DISTURBED AREAS SHOULD BE RESEDED BETWEEN THE PLANTING DATES OF Nov. 1 - APRIL 30TH.
- GRASS SEED SHOULD BE DRILLED AT A DEPTH OF 1/4 INCH TO 1/2 INCH DEEP.
- SOIL PREPARATION: MIX THE FOLLOWING SOIL AMENDMENTS AND APPLY TO SOD AND SHRUB BED AREAS.
 - A. ASPEN RICH COMPOST -- 4 CUBIC YARDS PER 1,000 S.F.
 - B. COMMERCIAL FERTILIZER (20-10-5): 10 lbs. PER 1,000 S.F. C. SUPERPHOSPHATE: 10 lbs. PER 1,000 S.F.
- BACKFILL FOR TREES AND SHRUBS: SHALL CONSIST OF 1/3 ASPEN RICH COMPOST AND 2/3 SITE SOIL. FERTILIZE WITH AGRI-FORM TABLETS AT MANUFACTURER'S RECOMMENDED RATES.
- LANDSCAPE CONTRACTOR SHALL BE RESPONSIBLE FOR FINISH GRADES IN LANDSCAPE AREAS.
- LANDSCAPE CONTRACTOR SHALL BE RESPONSIBLE FOR TRAFFIC CONTROL AS NECESSARY BY THIS WORK.
- TEST SOIL IN PROPOSED LANDSCAPE AREAS PREVIOUSLY PAVED OR BUILT ON FOR STERILE AND REMOVE CONTAMINATED SOIL. BACKFILL WITH SPECIFIED TOPSOIL.
- CONTRACTOR SHALL REPAIR ALL DAMAGE DUE TO HIS CONSTRUCTION AND KEEP PROJECT AREAS CLEAN AND ORDERLY DURING AND UPON COMPLETION OF HIS WORK.

LANDSCAPE REQUIREMENTS

ROAD LANDSCAPE AREA (4800 LF)				
	LANDSCAPE RATIO	REQUIRED	PROVIDED	EXISTING
TREES	1 / 30 LF	160	160	0
SHRUBS	N/A	0	16	0
GRASS & PERENNIALS		0	20	0
INTERNAL LANDSCAPE AREA (5392 SF)				
	LANDSCAPE RATIO	REQUIRED	PROVIDED	EXISTING
TREES	1 / 500 SF	11	16	0
SHRUBS	N/A	0	45	0
GRASS & PERENNIALS		0	60	0



POINT

POINT CONSULTING LLC
8460 W KEN CARYL AVE #101
LITTLETON, CO 80128
720-258-6636
www.pntllc.com

CIVIL ENGINEERING
LANDSCAPE ARCHITECTURE
LAND SURVEYING

CONCEPTUAL LANDSCAPE PLAN

COPART

COLORADO SPRINGS, EL PASO COUNTY, COLORADO

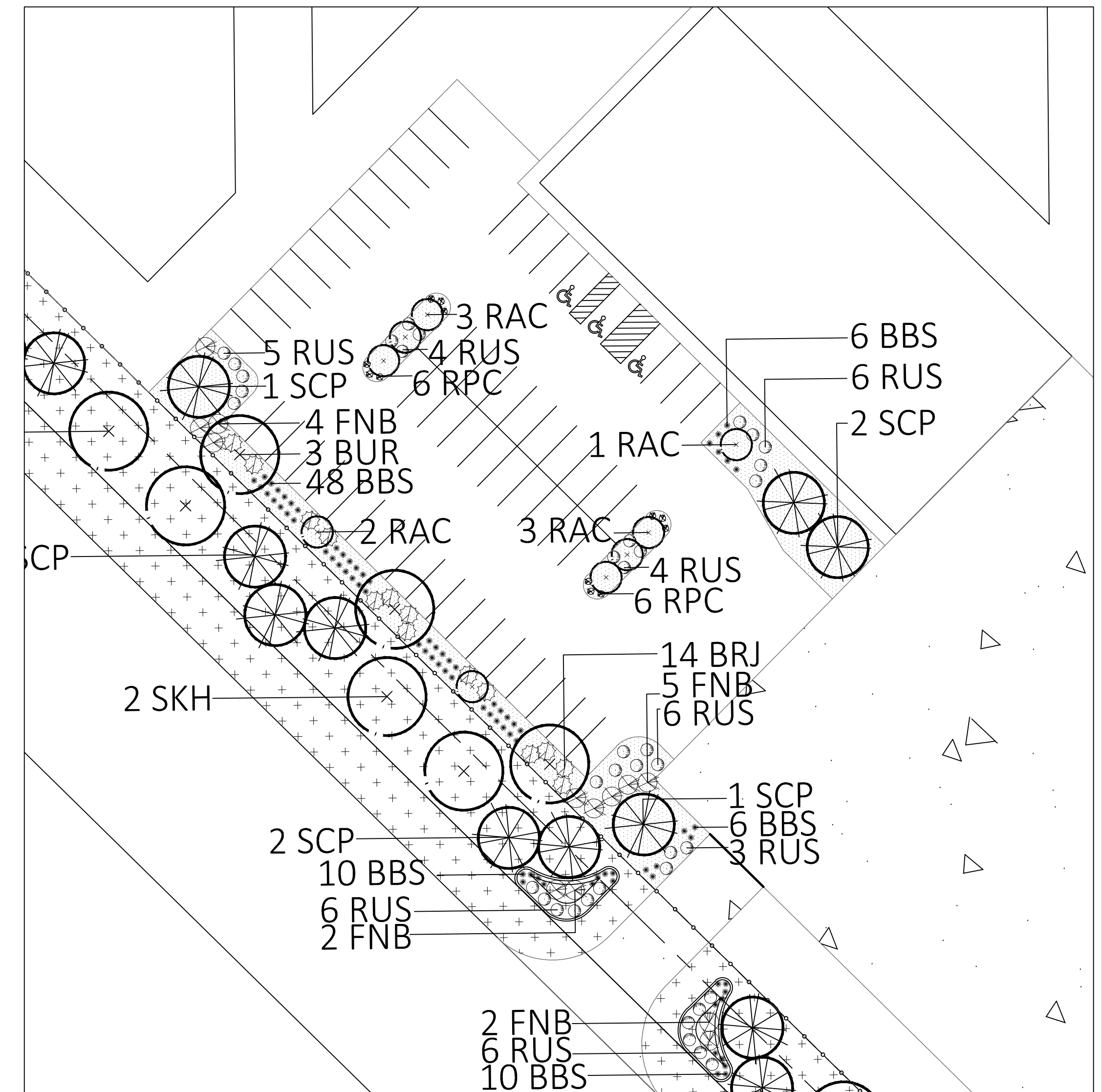
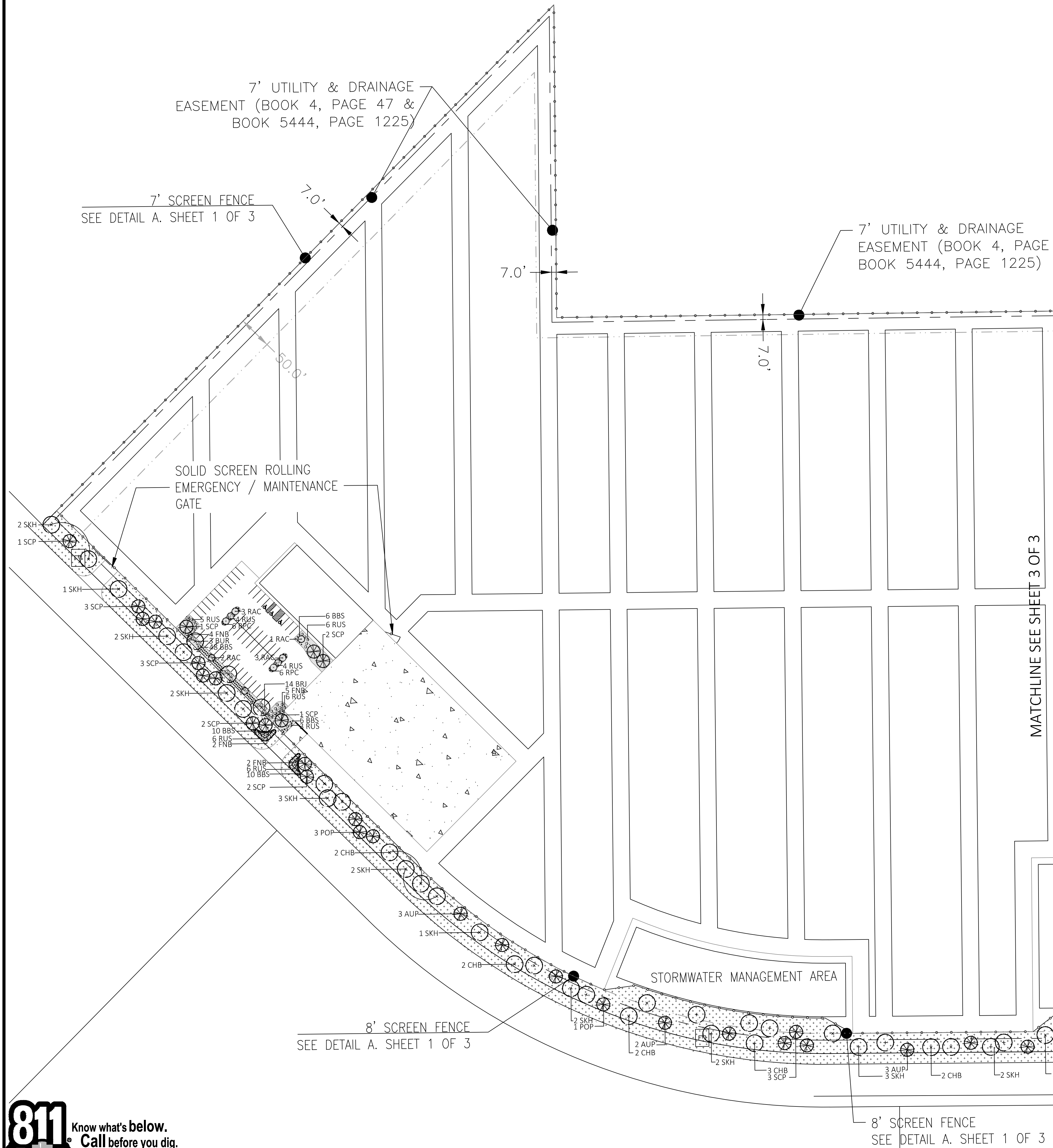
JOB NO. 19.053

LANDSCAPE PLAN

DATE 07/26/2019

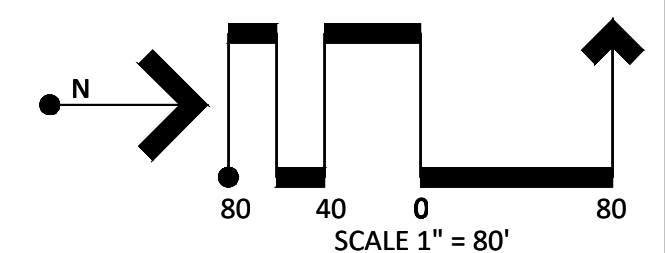
DESCRIPTION ORIGINAL PREPARATION

SHEET 1/3



A LANDSCAPE AREA ENLARGEMENT
SCALE 1"=30'

- LEGEND
- 7'-8" SCREEN FENCE
 - NATIVE SHOTGUN SEED MIX
 - LANDSCAPE ROCK
 - DECIDUOUS TREE
 - EVERGREEN TREE
 - ORNAMENTAL TREE
 - DECIDUOUS SHRUBS
 - ORNAMENTAL GRASSES
 - PERENNIAL FLOWERS



POINT CONSULTING LLC
8460 W KEN CARYL AVE #101
LITTLETON, CO 80128
720-258-6836
www.pnt-hc.com

CIVIL ENGINEERING
LANDSCAPE ARCHITECTURE
LAND SURVEYING

CONCEPTUAL LANDSCAPE PLAN

COPART

COLORADO SPRINGS, EL PASO COUNTY, COLORADO

LANDSCAPE PLAN JOB NO. 19.053

DESCRIPTION
ORIGINAL PREPARATION

DATE
07/26/2019

SHEET 2/3

