

ABBREVIATION LEGEND

ASPH	ASPHALT
CONC	CONCRETE
C & G	CURB & GUTTER
DET.	DETAIL
ESMT	EASEMENT
ME	MATCH EXISTING
P.B., PG.	PLAT BOOK, PAGE
PVMT	PAVEMENT
RET. WALL	RETAINING WALL
REC. NO.	RECEPTION NUMBER
R.O.W.	RIGHT-OF-WAY
SF	SQUARE FOOT
STBK	SETBACK
SW	SIDEWALK
UTIL	UTILITY

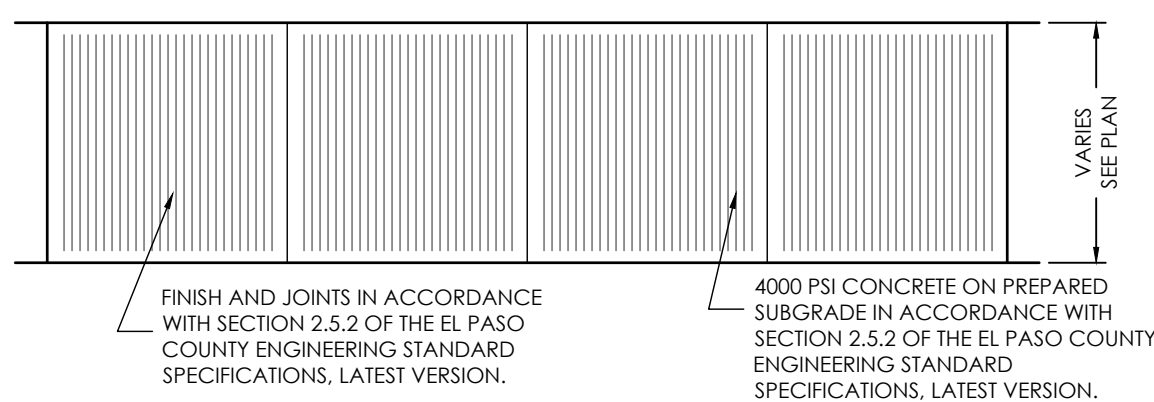
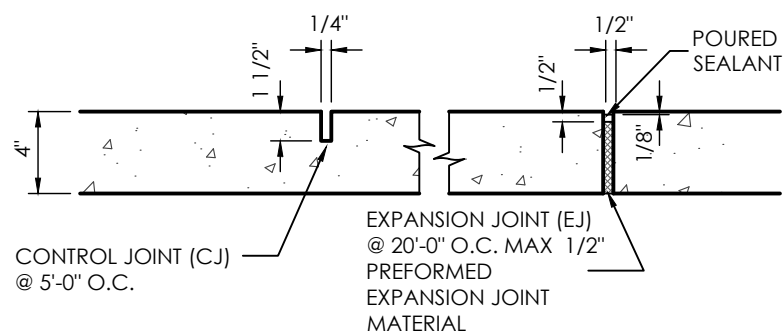
RIPRAP DESIGNATION	% SMALLER THAN GIVEN SIZE BY WEIGHT	ROCK DIMENSION (INCHES)	50" (INCHES)
TYPE L	70-100	15	9
	50-70	12	
	35-50	9	
	2-10	3	
TYPE VL	70-100	12	6
	50-70	9	
	35-50	6	
	2-10	2	
CLASS 6	100	1	
BASE COURSE	95-100	3/4	#200
	30-65	#4	
	25-55	#8	
	3-12	#200	

SITE PLAN SPECIFIC NOTES

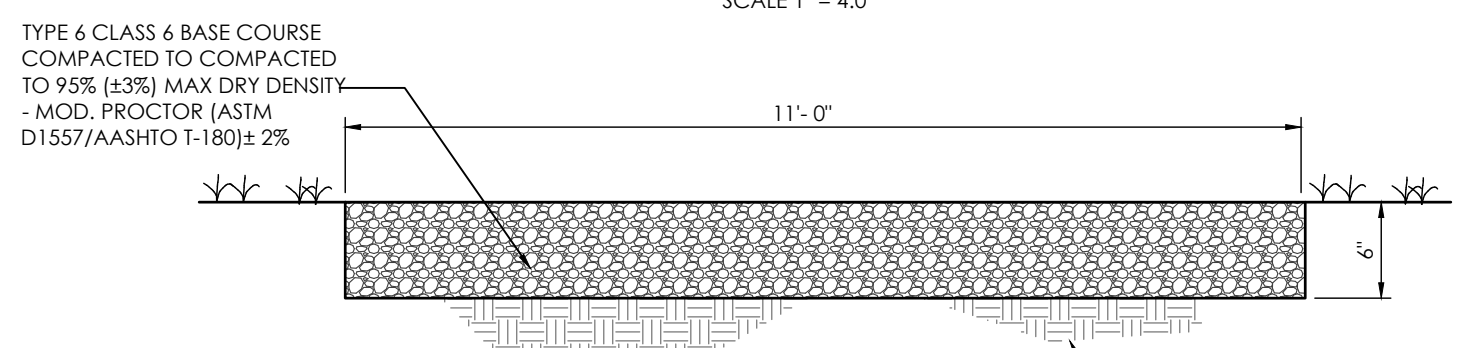
- 1 REMOVE EXISTING FENCING
- 2 INSTALL 6' HIGH CHAIN LINK FENCING W/ OPAQUE PRIMARY SLATS (BEIGE) (SEE SITE DEVELOPMENT PLAN)
- 3 INSTALL 16' WIDE CHAIN LINK GATE
- 4 INSTALL 30' WIDE MOTORIZED ACCESS GATE
- 5 INSTALL MASONRY BRICK WALL (SEE DETAIL)
- 6 INSTALL CONCRETE PAVEMENT
- 7 INSTALL CONCRETE SIDEWALK
- 8 INSTALL PARKING BOLLARDS (SEE SITE DEVELOPMENT PLAN)
- 9 INSTALL PARKING STRIPING
- 10 INSTALL EXTENDED DETENTION BASIN (SEE POND PLAN)
- 11 INSTALL OUTLET STRUCTURE (SEE POND PLAN)
- 12 15' WIDE GRAVEL MAINTENANCE DRIVE
- 13 INSTALL CONCRETE SPILLWAY & EMERGENCY OVERFLOW RIP-RAP (SEE POND PLAN)
- 14 INSTALL PRIVATE HDPE STORM PIPE W/ FES AT OUTLET (SEE STORM PLAN)
- 15 INSTALL RIPRAP PAD AT STORM PIPE OUTLET
- 16 INSTALL 2" THK GRAVEL SURFACE ON ALL DRIVEABLE AREAS & VEHICLE STORAGE AREAS
- 17 REMOVE EXISTING STOCKPILE

MAP NOTES

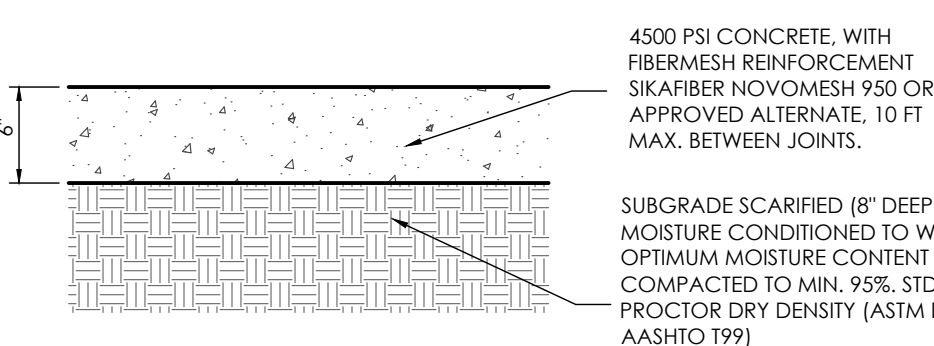
1. BOUNDARY BEARINGS AND DISTANCES SHOWN ON THIS MAP ARE RELATIVE TO THE NORTH PROPERTY LINE BEARING S 88°46'13"E.
2. THE EXISTING TOPOGRAPHY SHOWN ON THIS PLAN WAS PREPARED AND PROVIDED BY POLARIS SURVEYING INC. ELEVATIONS SHOWN ARE RELATIVE TO THE CITY OF COLORADO SPRINGS CONTROL NETWORK (FIMS DATUM).
3. ALL EXISTING UNDERGROUND UTILITIES SHOWN ON THIS MAP ARE FROM UTILITY MAIN RECORD MAPS AND UTILITY SERVICE LOCATION MAPS. THE LOCATION OF UTILITIES AS SHOWN ARE APPROXIMATE. ALL UTILITIES MAY NOT BE SHOWN OR MAY NOT HAVE BEEN LOCATED. BELOW GROUND UTILITY LOCATIONS WERE NOT PERFORMED.



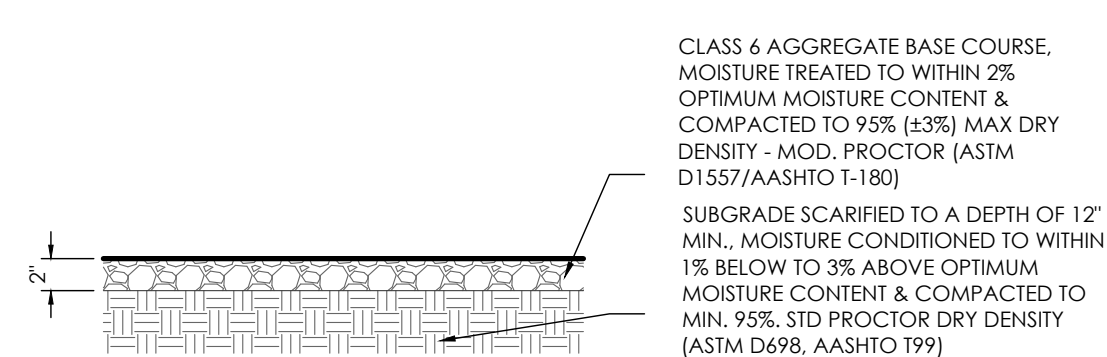
TYPICAL SIDEWALK DETAIL
SCALE 1" = 4'-0"



POND GRAVEL ACCESS
SCALE: NOT TO SCALE



PAVEMENT SECTION (CONCRETE)
SCALE 1" = 1'-0"



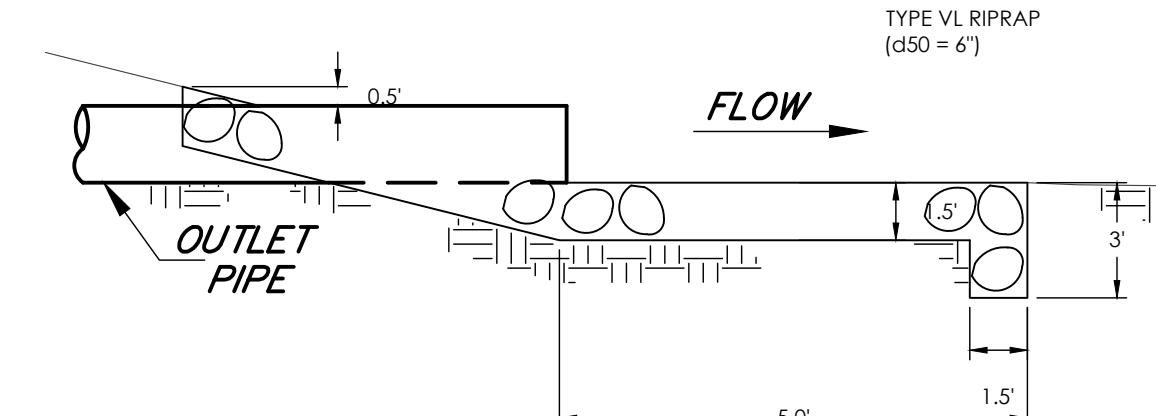
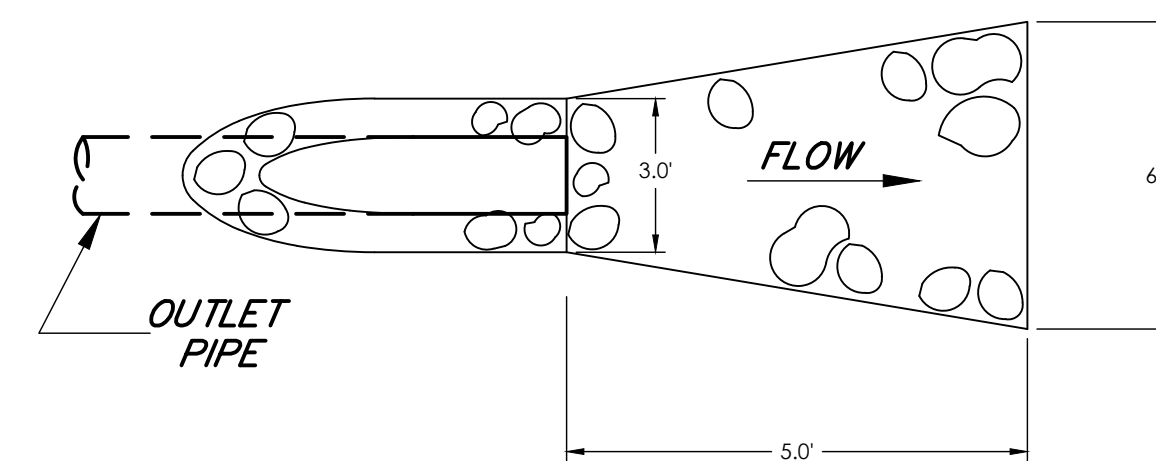
STORAGE AREA BASE COURSE
SCALE 1" = 1'-0"

WARNING
THIS AREA IS A STORMWATER FACILITY AND IS SUBJECT TO PERIODIC FLOODING

24"x18"

1. TYPOGRAPHY TO BE HELVETICA MEDIUM
2. SIGNS TO BE MOUNTED ON METAL SIGN POST; 7'-0" ABOVE FINISH GRADE TO BOTTOM OF SIGN-TYP. ADDITIONAL PLACARD SIGNS SHALL BE MOUNTED AT LEAST 6'-0" ABOVE FINISH GRADE TO BOTTOM OF SIGN-TYP.
3. THE SIGNS SHALL BE FABRICATED OF DURABLE MATERIALS, SUCH AS METAL OR PLASTIC, USING RED LETTERING ON A WHITE BACKGROUND

POND SIGNAGE
SCALE: 1" = 1'-0"

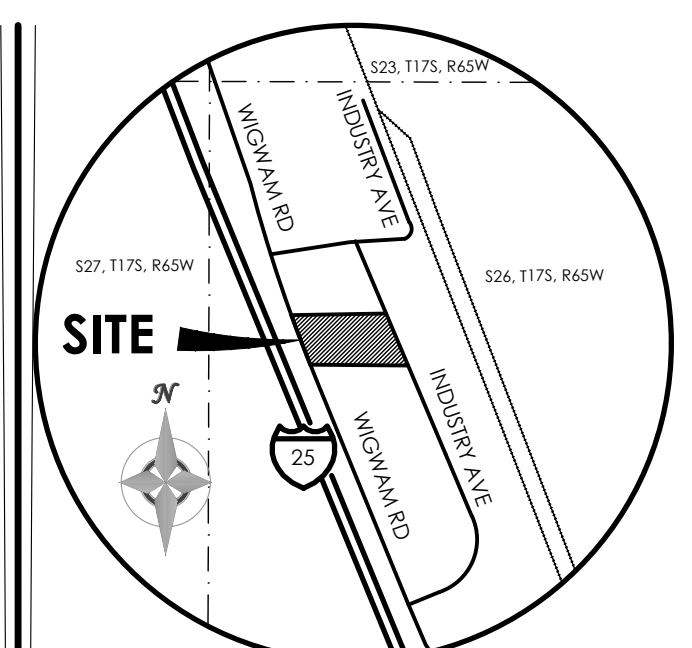


RIPRAP AT POND OUTLET
NIS

L=335.01'
Δ=3°24'33"
R=5630.33'
CB=N19°03'59"W,
CL=334.96'

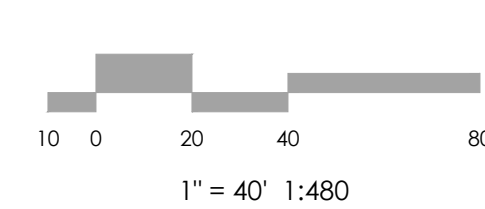
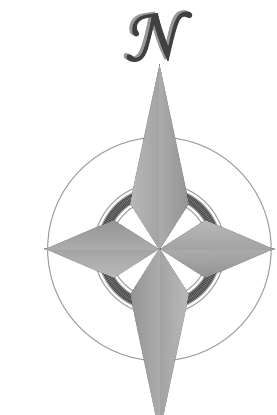
N 20°46'13" W, 148.92'

N 88°46'13" W, 753.46'



VICINITY MAP

BENCHMARK
THE BENCHMARK FOR THESE PLANS IS A NAIL W/ ALUM WASHER FOUND AT THE SW CORNER OF SITE. TOP OF NW RAILROAD TIE WALL ELEV. = 5232.19' (COLORADO CENTRAL, NAVD 88)



MVE, INC.
ENGINEERS & SURVEYORS
1903 Library Street, Suite 200 Colorado Springs, CO 80909 719.635.5736

REVISIONS

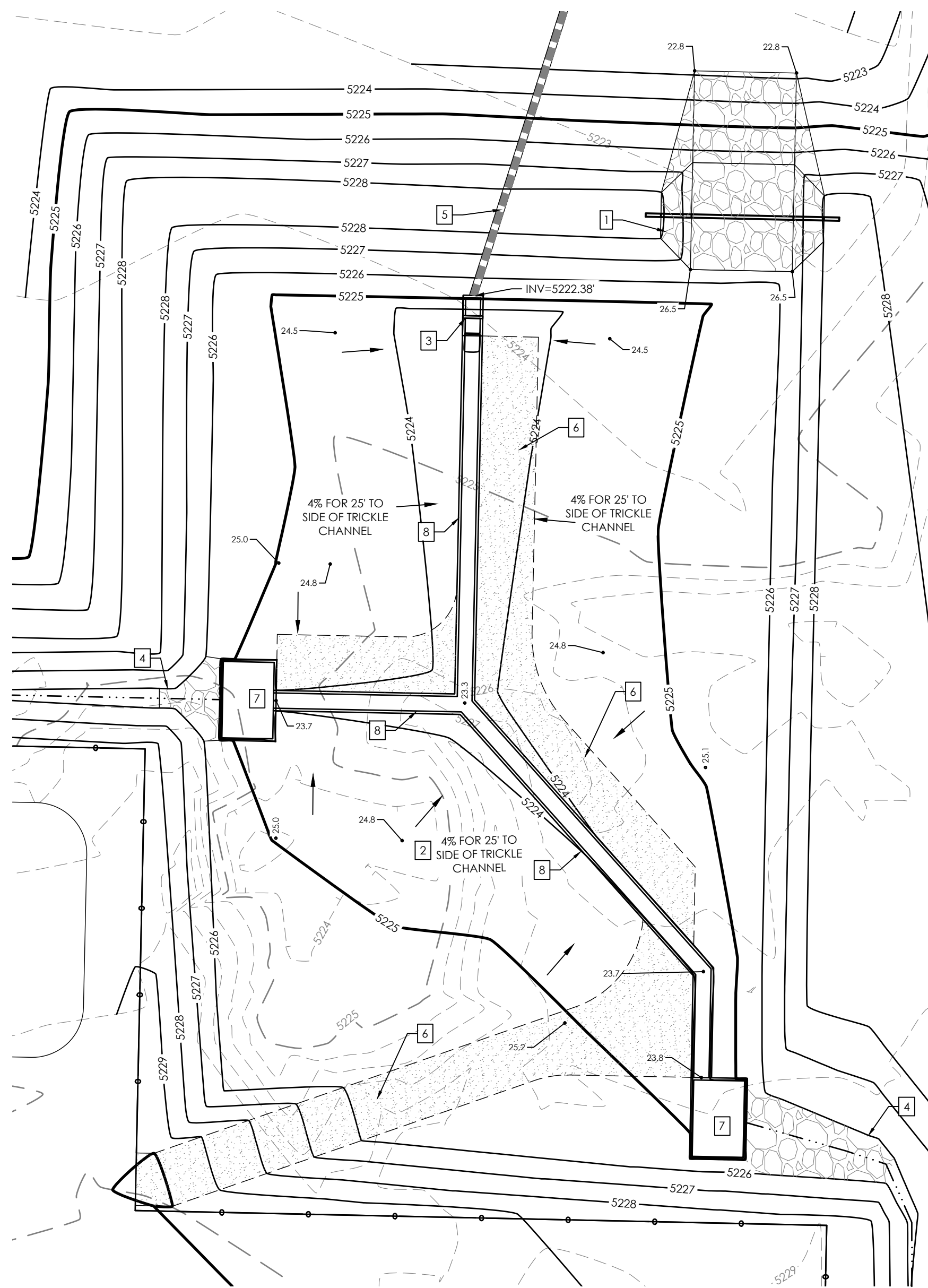
DESIGNED BY JO
DRAWN BY JO
CHECKED BY AS-BUILTS BY
AS-BUILTS BY CHECKED BY

1995 WIGWAM RD
EL PASO COUNTY, CO

GRADING & EROSION CONTROL PLAN
GRADING PLAN

C1.2 MVE PROJECT 61180
MVE DRAWING GEC-GP

MARCH 31, 2023
SHEET 2 OF 6

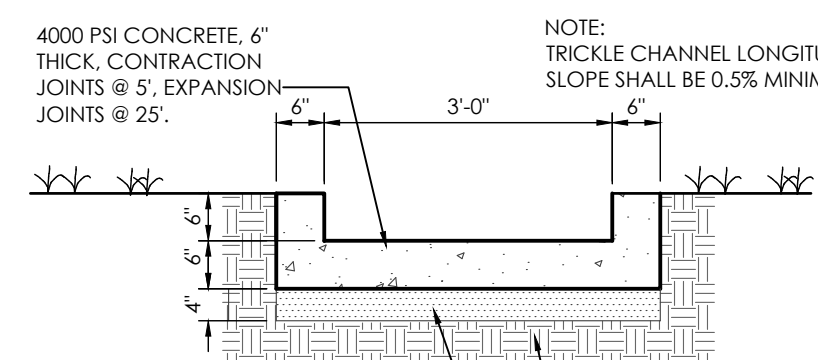


FULL SPECTRUM EXTENDED DETENTION BASIN DETAIL

SCALE 1" = 20'

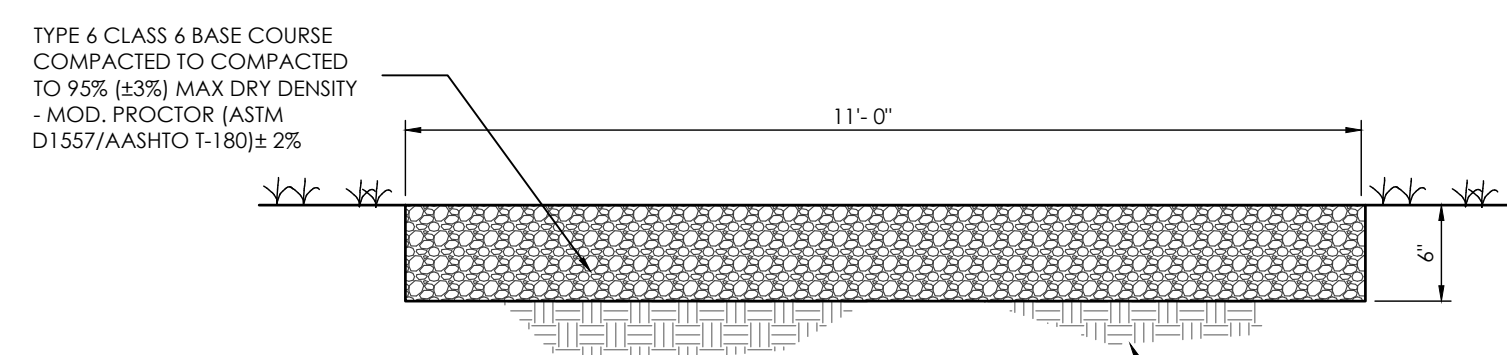
NOTE LEGEND

- 1 INSTALL CONCRETE SPILLWAY WEIR & EMERGENCY OVERFLOW RIP-RAP (SEE SPILLWAY DETAIL)
- 2 INSTALL FULL SPECTRUM EXTENDED DETENTION BASIN
- 3 INSTALL OUTLET STRUCTURE (SEE OUTLET DETAIL)
- 4 INSTALL RIP-RAP RUN DOWN (SEE RIP-RAP DETAIL)
- 5 INSTALL 18" HDPE STORM PIPE AT 0.8% (SEE STORM PLAN)
- 6 INSTALL 15" WIDE GRAVEL ACCESS DRIVE
- 7 INSTALL CONCRETE FOREBAY (SEE CONCRETE FOREBAY A1-1 DETAIL)
- 8 INSTALL 3.0" BTM CONCRETE TRICKLE CHANNEL (SEE DETAIL)
- 9 INSTALL POND SIGNAGE (SEE DETAIL ON GRADING PLAN)



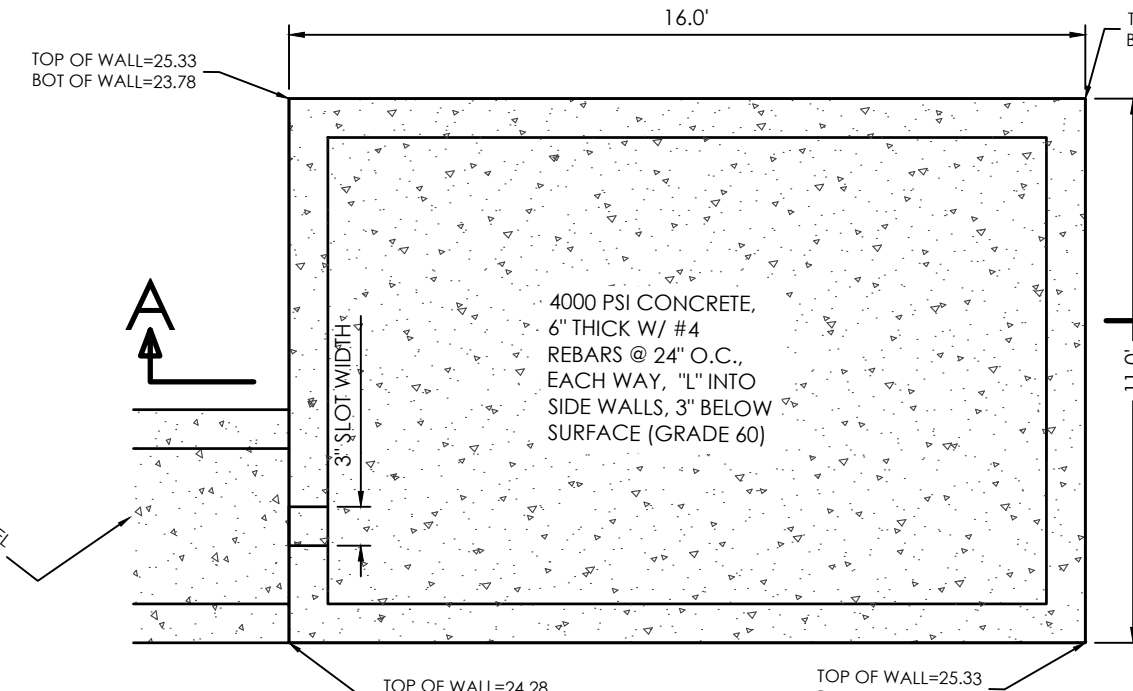
CONCRETE TRICKLE CHANNEL DETAIL

SCALE: 1" = 2'



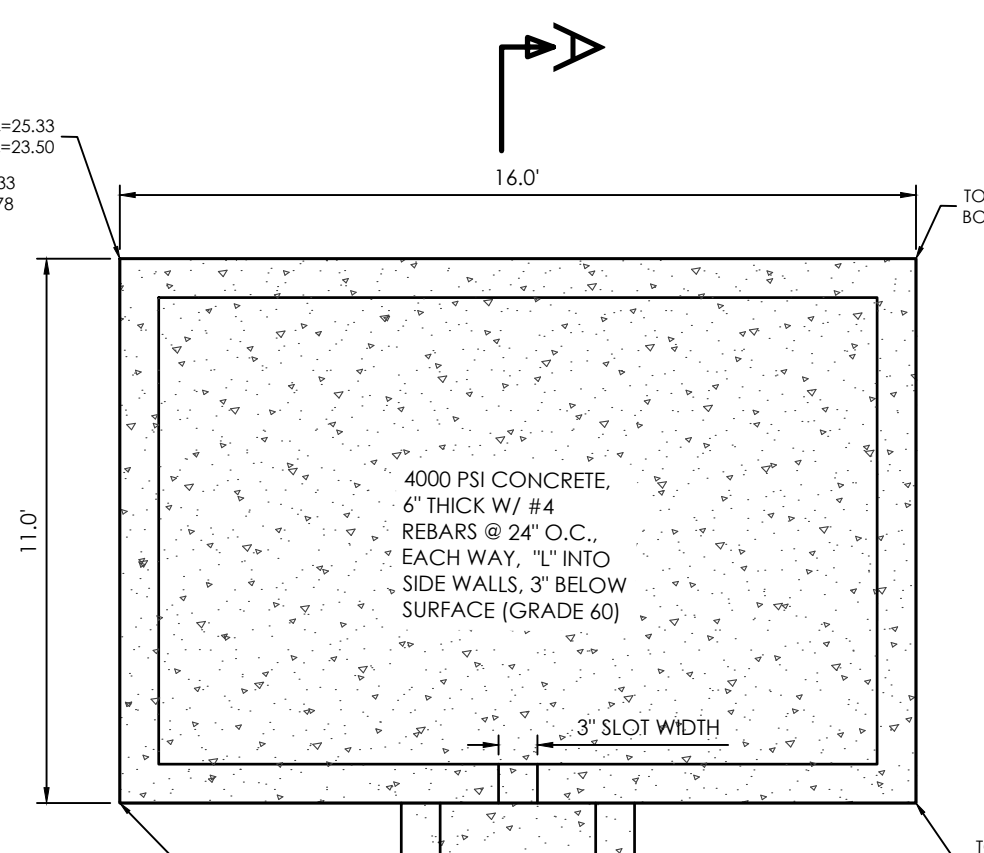
POND GRAVEL ACCESS

SCALE: NOT TO SCALE



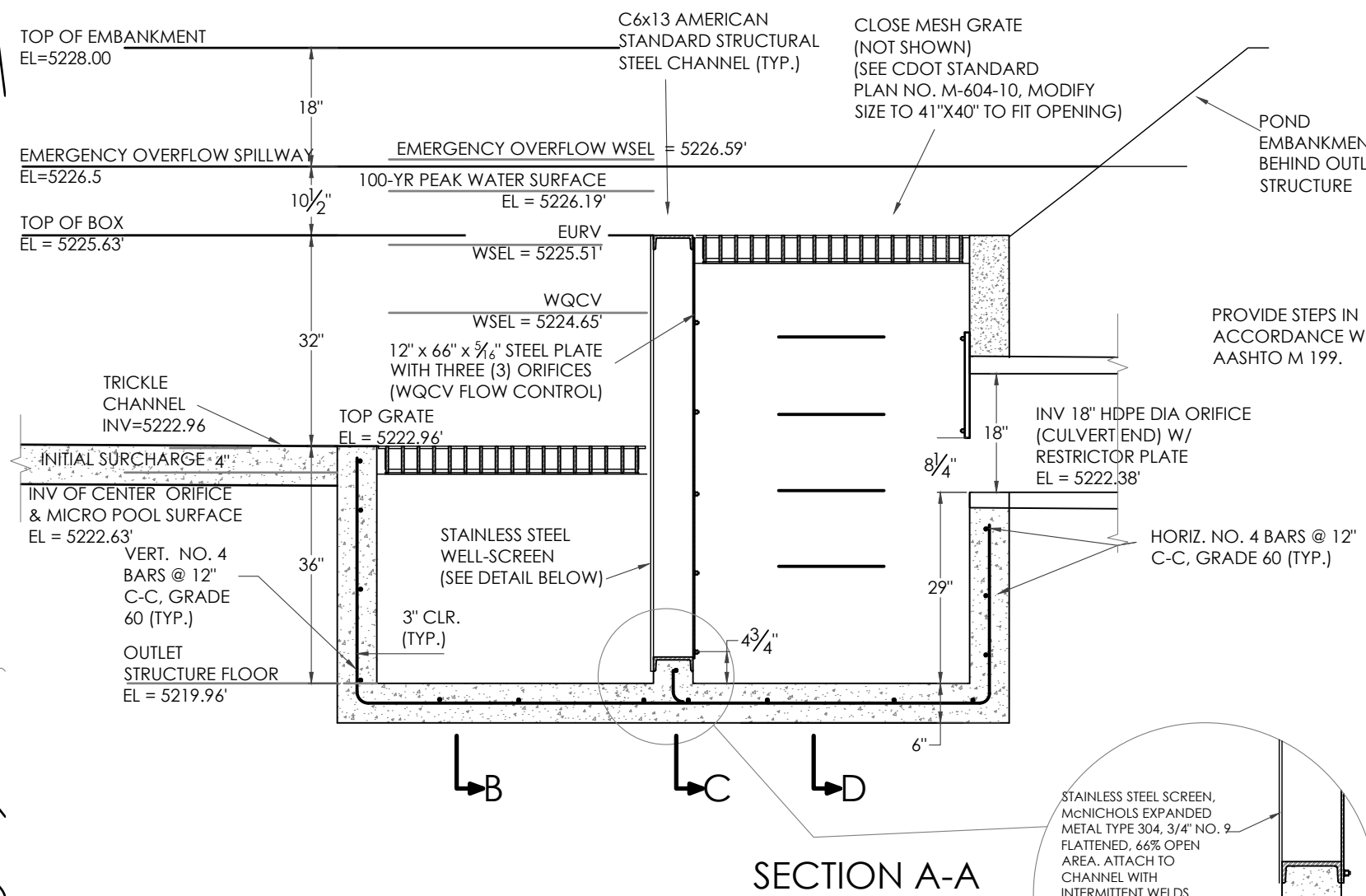
WEST FOREBAY DETAIL

NOT TO SCALE

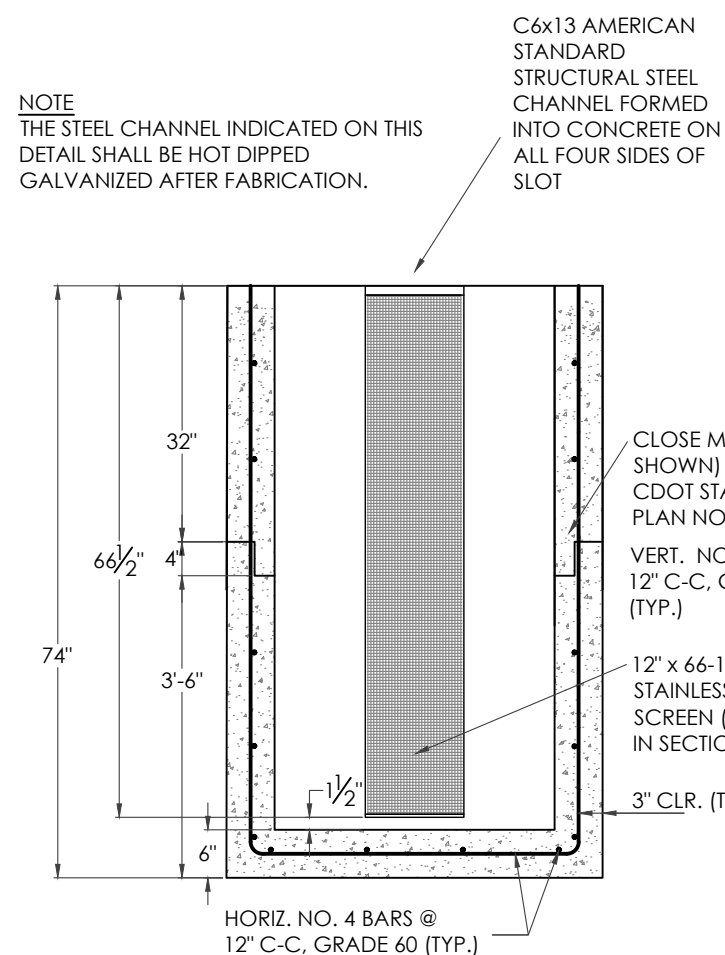


NORTH FOREBAY DETAIL

NOT TO SCALE



SECTION A-A



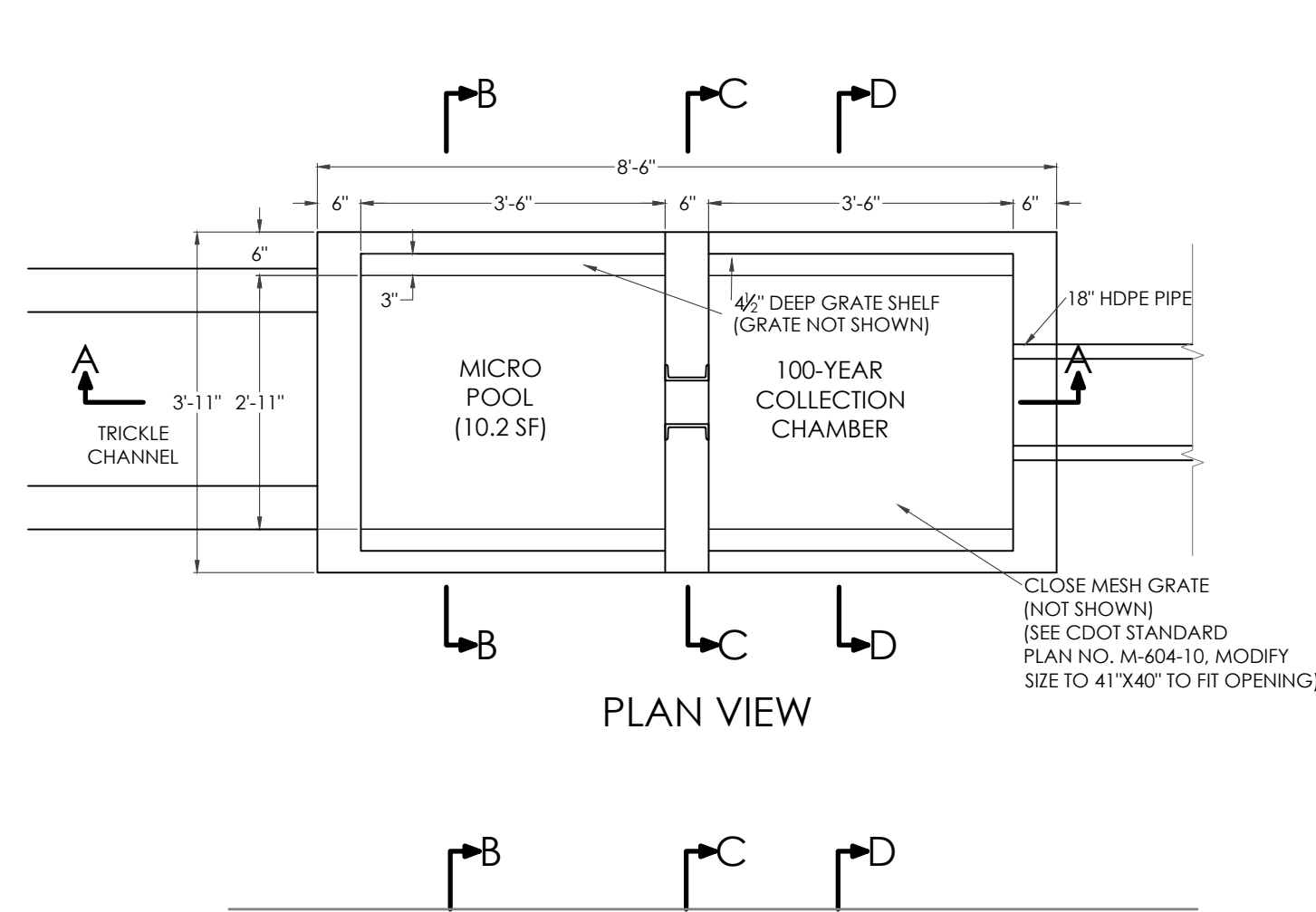
SECTION B-B



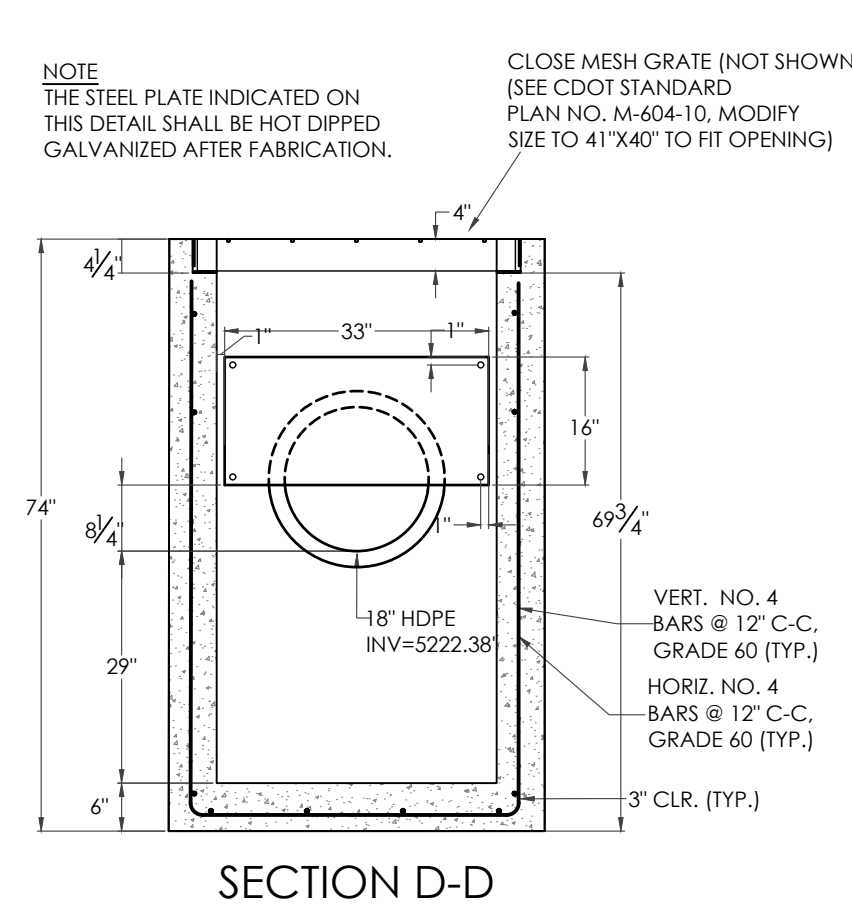
SECTION C-C

FULL SPECTRUM EXTENDED DETENTION BASIN OUTLET STRUCTURE DETAILS

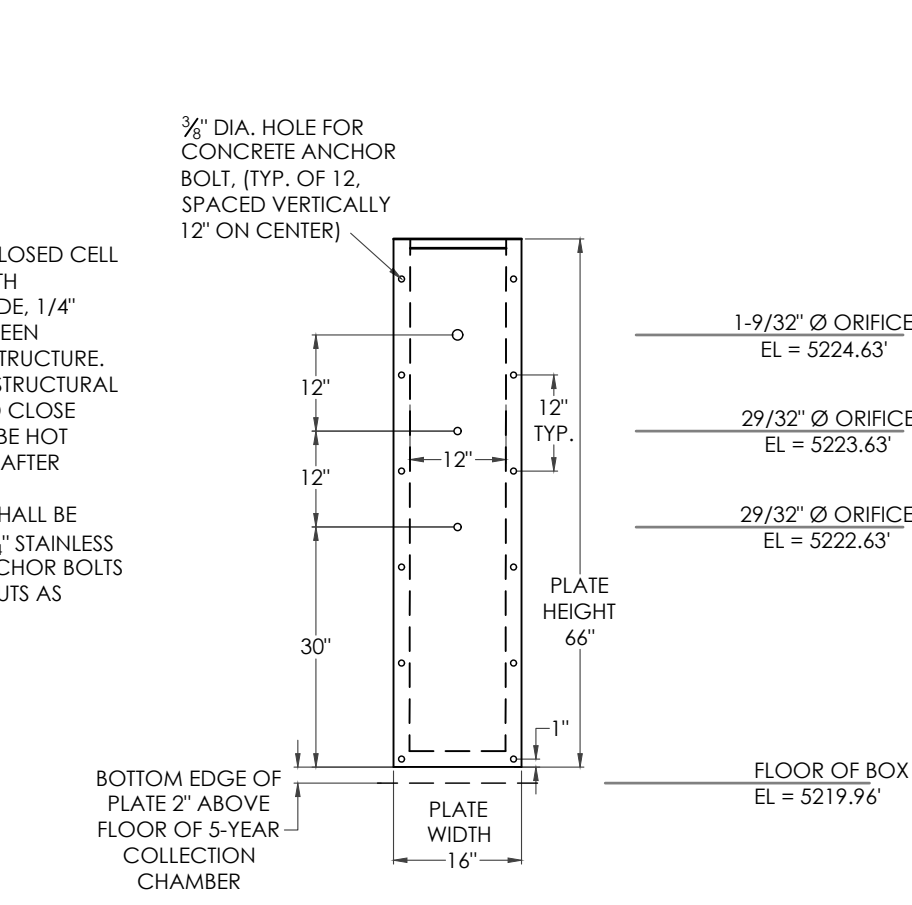
SCALE: 1" = 2'



PLAN VIEW



SECTION D-D



WQCV ORIFICE PLATE

- NOTES:**
1. INSTALL NEOPRENE CLOSED CELL MEDIUM GASKETS WITH ADHESIVE ON ONE SIDE, 1/4" THICK x 2" WIDE BETWEEN ORIFICE PLATE AND STRUCTURE.
 2. ALL ORIFICE PLATES, STRUCTURAL STEEL CHANNEL, AND CLOSE MESH GRATES SHALL BE HOT DIPPED GALVANIZED AFTER FABRICATION.
 3. ALL ORIFICE PLATES SHALL BE MOUNTED WITH 3" x 1/2" STAINLESS STEEL CONCRETE ANCHOR BOLTS W/ WASHERS, AND NUTS AS SHOWN.

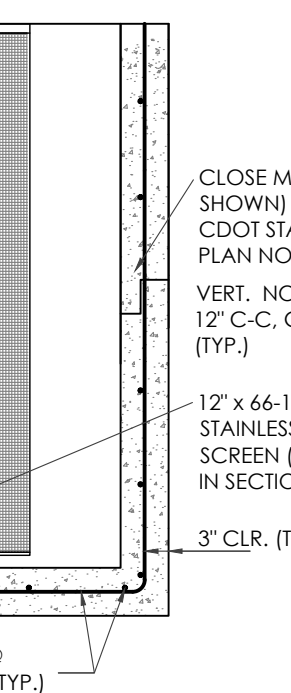
NOTE: THE STEEL CHANNEL INDICATED ON THIS DETAIL SHALL BE HOT DIPPED GALVANIZED AFTER FABRICATION.

CLOSE MESH GRATE (NOT SHOWN) (SEE CDDI STANDARD PLAN NO. M-604-10, MODIFY SIZE TO 41"x40" TO FIT OPENING)

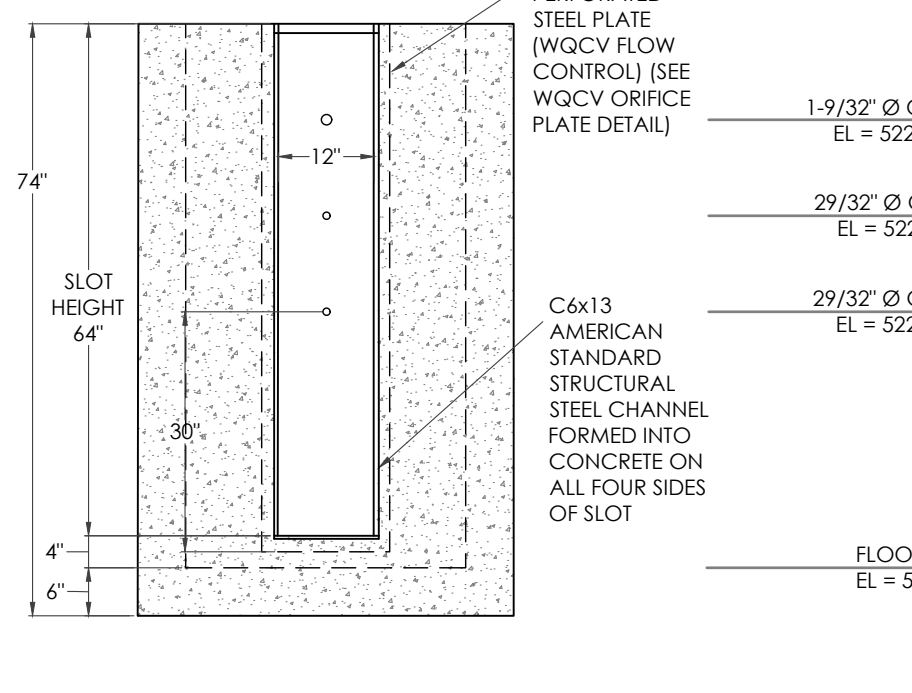
3/4" DIA. HOLE FOR CONCRETE ANCHOR BOLT, (TYP. OF 12, SPACED VERTICALLY 12" ON CENTER)

1-9/32" Ø ORIFICE
EL = 5224.63
29/32" Ø ORIFICE
EL = 5223.63
29/32" Ø ORIFICE
EL = 5222.63

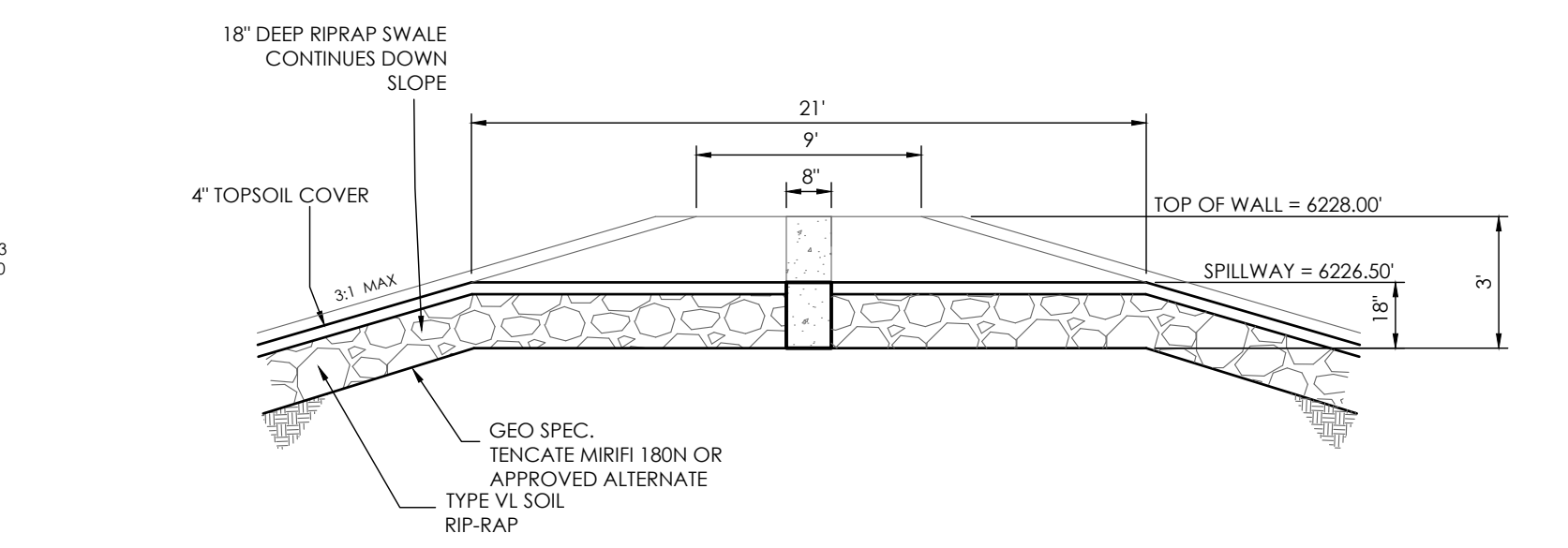
FLOOR OF BOX
EL = 5219.96



SECTION B-B

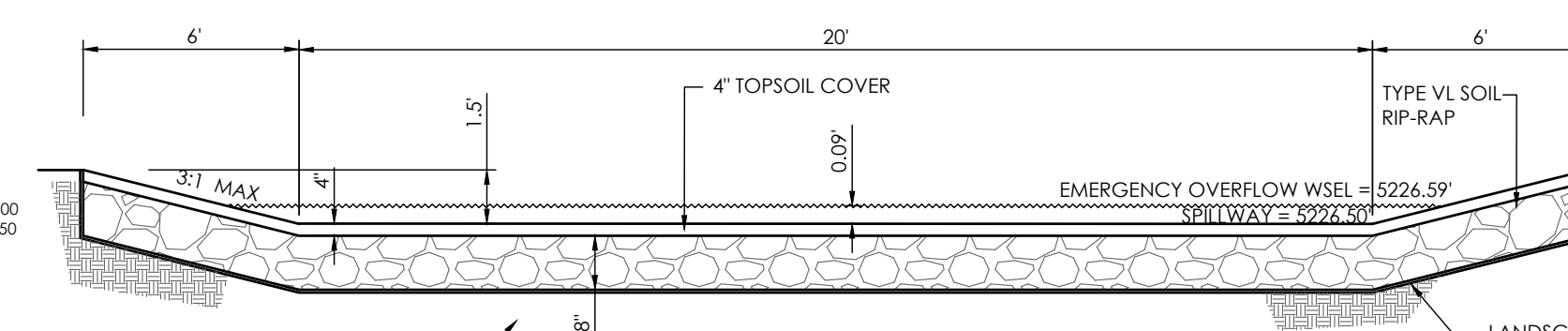


SECTION C-C



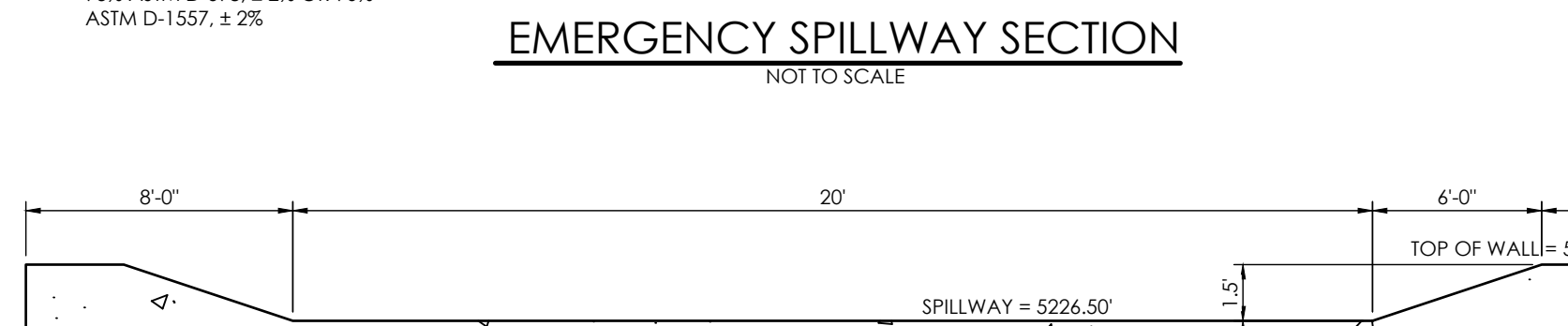
CONCRETE WEIR SECTION VIEW

NOT TO SCALE



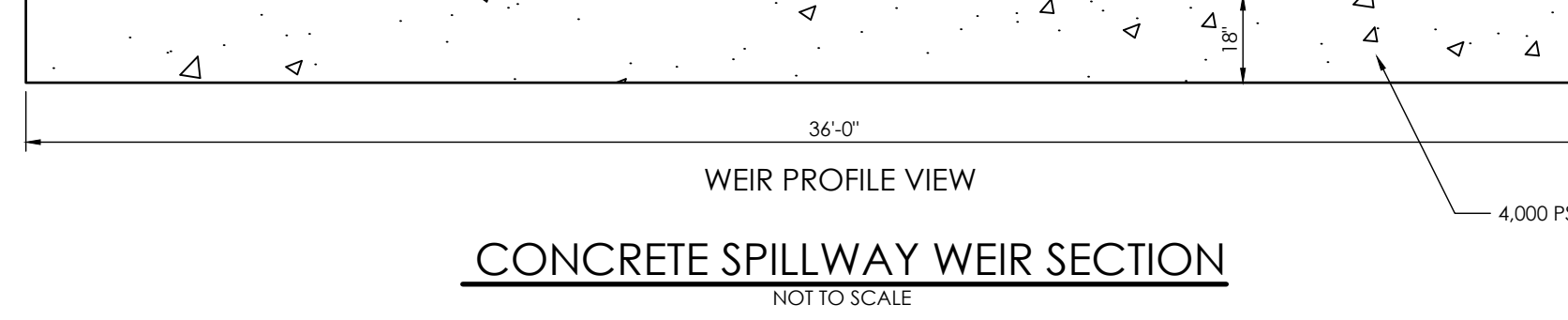
RIP RAP SECTION VIEW

NOT TO SCALE



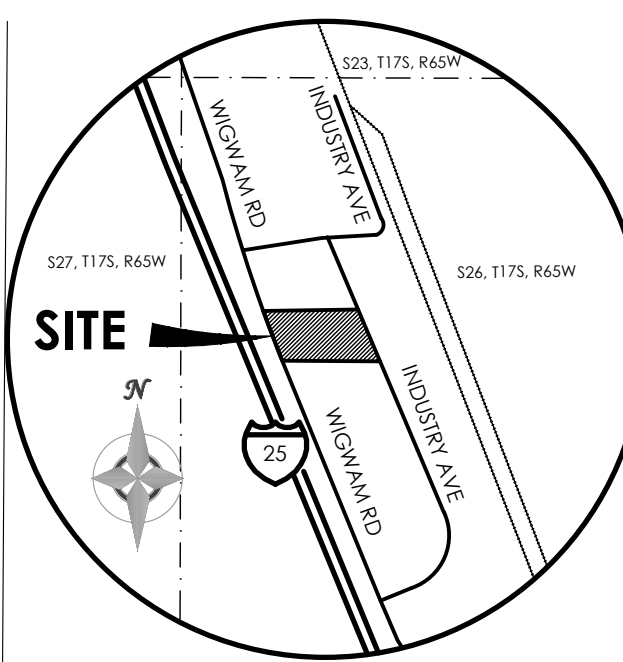
CONCRETE SPILLWAY WEIR SECTION

NOT TO SCALE



WEIR PROFILE VIEW

NOT TO SCALE

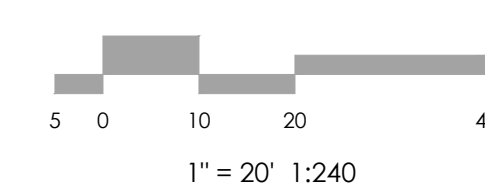
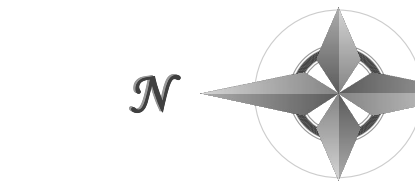


VICINITY MAP

NOT TO SCALE

BENCHMARK

THE BENCHMARK FOR THESE PLANS IS A NAIL W/ ALUM WASHER FOUND AT THE SW CORNER OF SITE. TOP OF NW RAILROAD TIE WALL ELEV. = 5232.19' (COLORADO CENTRAL, NAVD 88)



REVISIONS

DESIGNED BY: JO
DRAWN BY: JO
CHECKED BY: AS-BUILTS BY: _____
CHECKED BY: _____

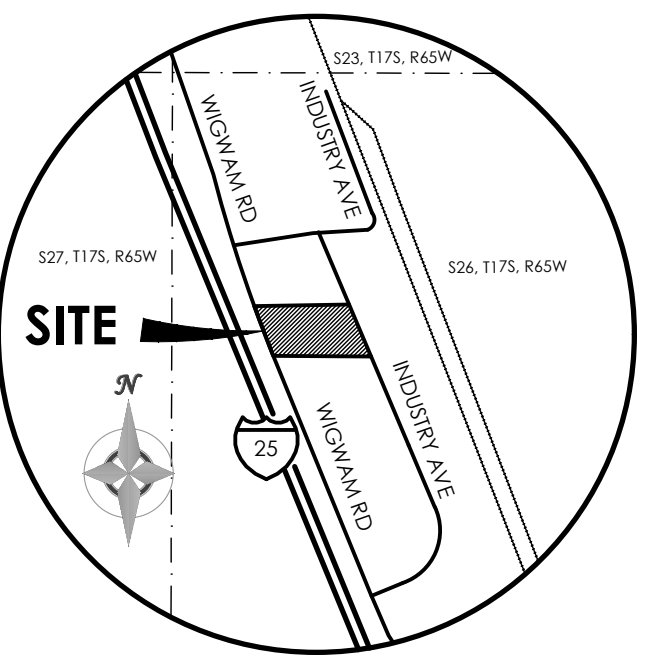
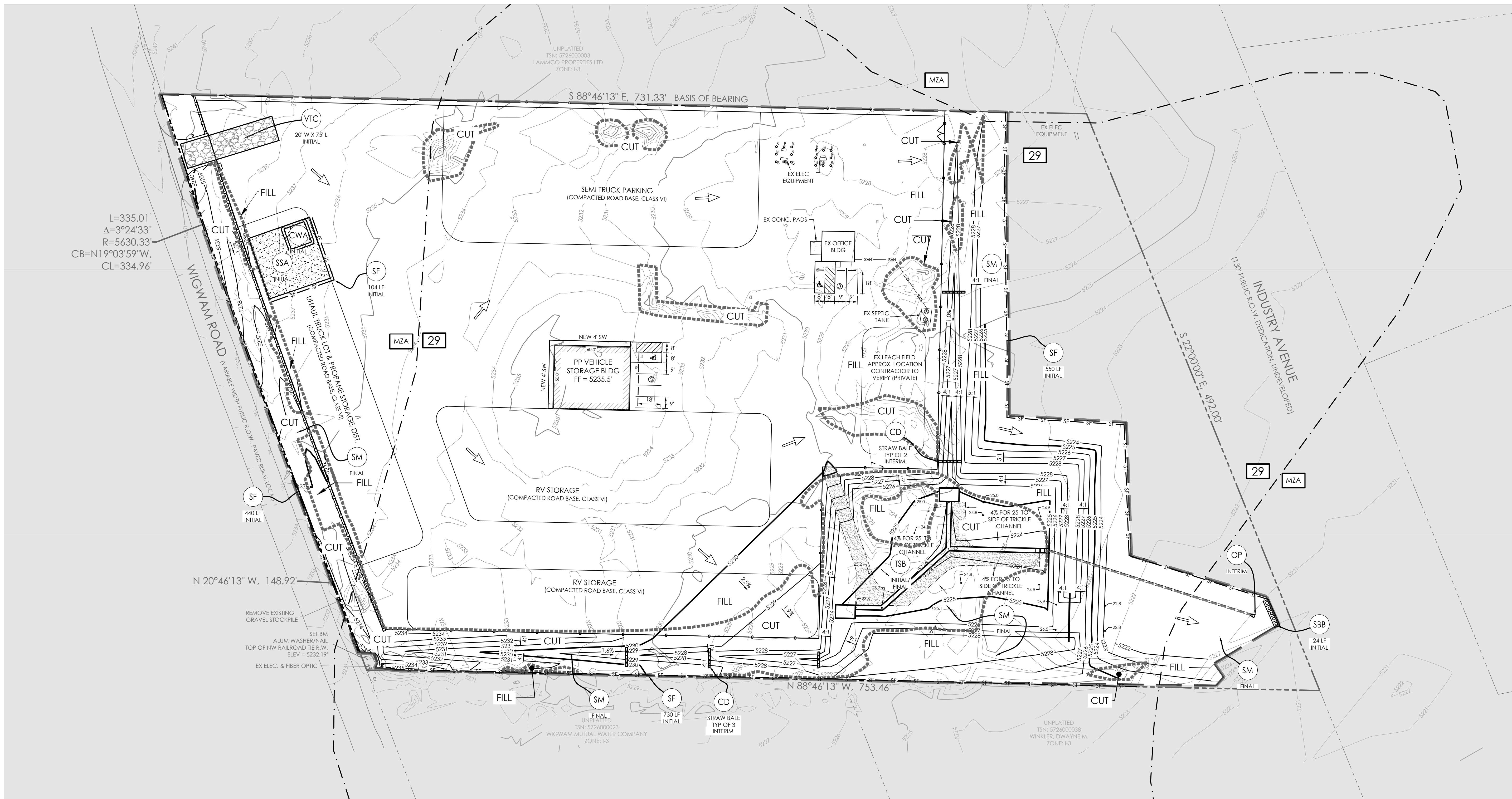
19955 WIGWAM RD
EL PASO COUNTY, CO

GRADING & EROSION CONTROL PLAN
POND PLAN

C1.3 MVE PROJECT 61180
MVE DRAWING GEC-PP

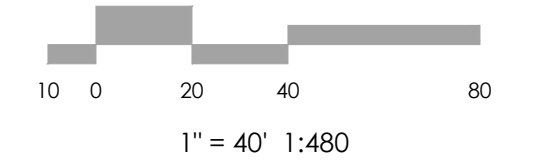
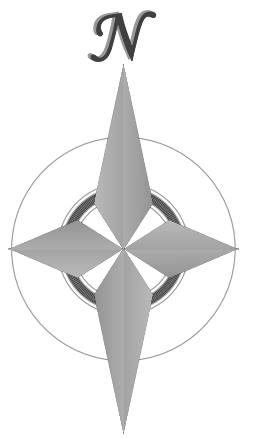
MARCH 31, 2023
SHEET 3 OF 6

PCD FILE NO. _____



VICINITY MAP
NOT TO SCALE

BENCHMARK
THE BENCHMARK FOR THESE PLANS IS A NAIL W/
ALUM WASHER FOUND AT THE SW CORNER OF
SITE. TOP OF NW RAILROAD TIE WALL
ELEV. = 5232.19'
(COLORADO CENTRAL, NAVD 88)



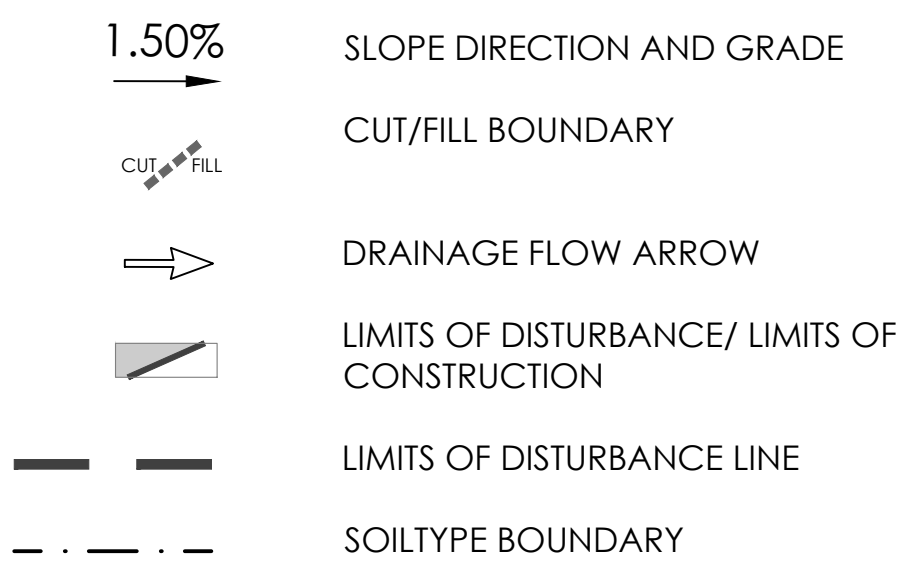
MVE, INC.
ENGINEERS & SURVEYORS

1903 Leary Street, Suite 200 Colorado Springs, CO 80909 719.635.5736

REVISIONS

CM LEGEND

MAP SYMBOL	KEY	DESCRIPTION
INITIAL CMs		
	SSA	STABILIZED STAGING AREA (Initial CM)
	SCL	SEDIMENT CONTROL LOG (Initial/INTERIM CM)
	VTC	VEHICLE TRACKING CONTROL (Initial CM)
	CD	CHECK DAM (Initial CM)
	SF	SILT FENCE (Initial CM)
	TSB	TEMPORARY SEDIMENT BASIN (INITIAL CM)
	SSB	STRAW BALE BARRIER (INITIAL CM)
	CWA	CONCRETE WASHOUT AREA (INITIAL CM)
INTERIM CMs		
	OP	OUTLET PROTECTION (RIP-RAP) (INTERIM/FINAL CM)
	CIP	CULVERT INLET PROTECTION (INTERIM CM)
FINAL CMs		
	SM	SEEDING & MULCHING (FINAL CM)



HYDROLOGIC SOIL GROUP	
MAP UNIT NUMBER	DESCRIPTION
29	FLUVAQUENTIC HAPLAQUOLLS, NEARLY LEVEL
MZA	MANZANOLA SILTY CLAY LOAM, SALINE, 0 TO 2% SLOPES

SOIL DATA			
PRIMARY SOIL DESCRIPTION	FLUVAQUENTIC HAPLAQUOLLS, NEARLY LEVEL	PRIMARY SOIL DESCRIPTION	MANZANOLA SILTY CLAY LOAM, SALINE, 0 TO 2% SLOPES
PERMEABILITY	MODERATE	PERMEABILITY	SLOW
SURFACE RUNOFF	SLOW	SURFACE RUNOFF	SLOW
HAZARD OF EROSION	SLIGHT	HAZARD OF EROSION	MODERATE
HYDROLOGIC SOIL GROUP	D	HYDROLOGIC SOIL GROUP	C

OTHER DATA

LAT/LONG COORDS: 38°32'35" / 104°38'26"

VEGETATION:
EXISTING: NATIVE PRAIRIE GRASSES & WEEDS, 26% COVERAGE
PROPOSED: PLANTINGS & RESEEDING PER LANDSCAPE PLAN

APPROX. EARTHWORK QUANTITIES:
1,759 CY CUT, 2,381 CY FILL

BATCH PLANTS: NONE

DEWATERING: NONE

DISTURBED AREA: 6.807± ACRES

RECEIVING WATERS: FOUNTAIN CREEK

SCHEDULE: SPRING 2024-SUMMER 2024
FINAL STABILIZATION FALL 2024

SYMBOLS SHOWN IN LEGEND SHALL BE USED BY SWMP ADMINISTRATOR TO ANNOTATE ANY CHANGES AND/OR ADDITIONS TO THIS PLAN.

PERMANENT SEEDING AND MULCHING PER LANDSCAPE ARCHITECT DESIGN. SEE APPROVED LANDSCAPING PLANS FOR ADDITIONAL SEEDING AND MULCHING INFORMATION.

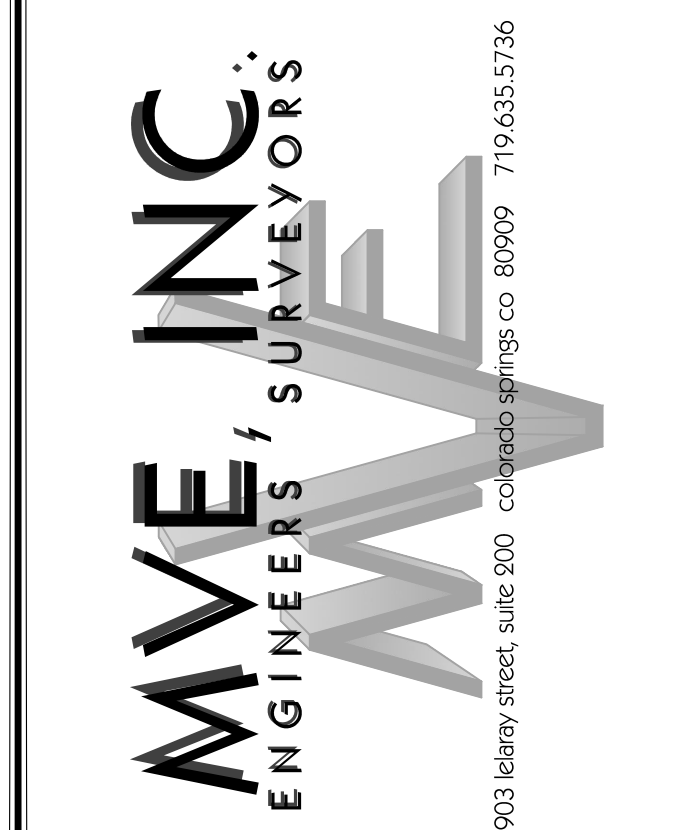
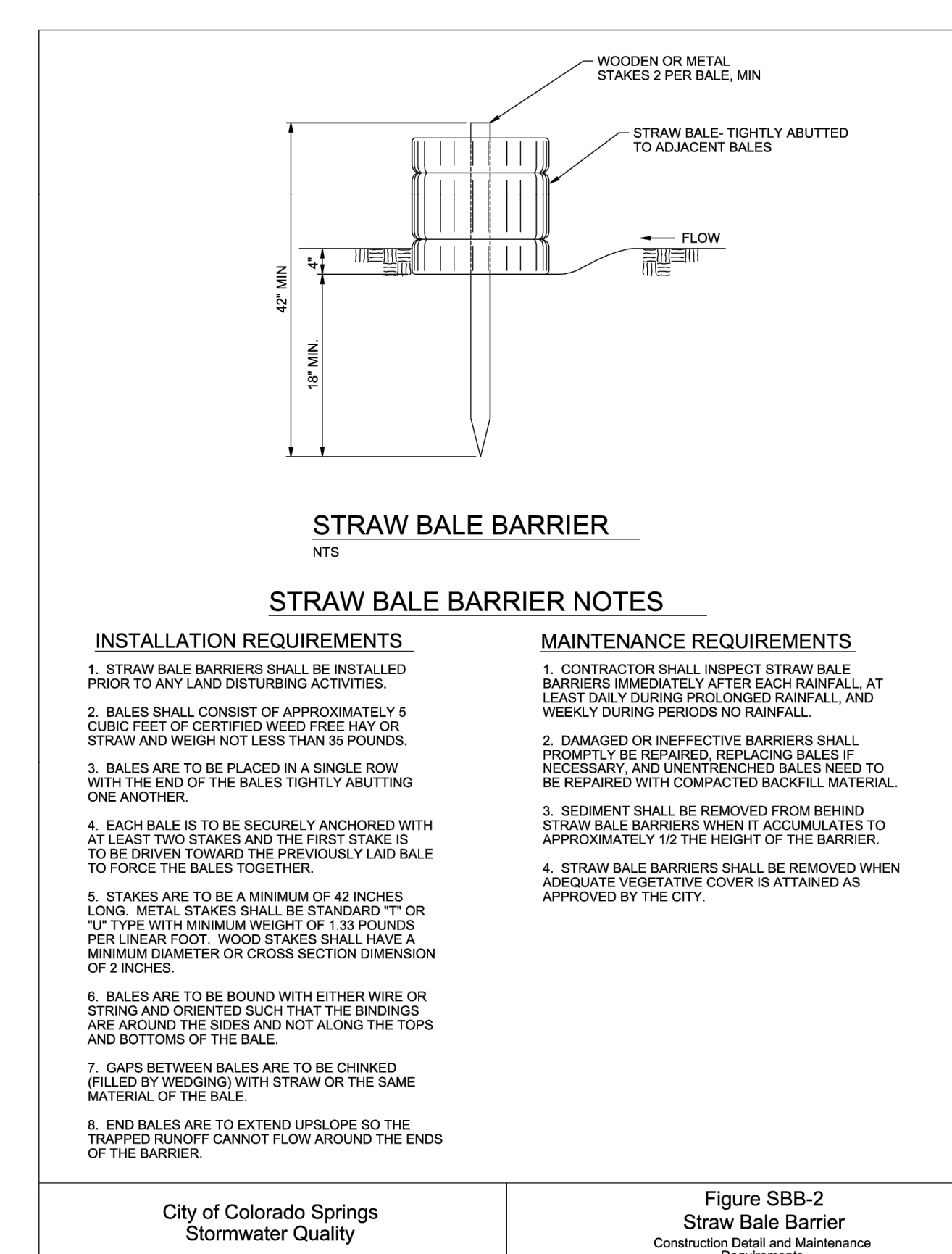
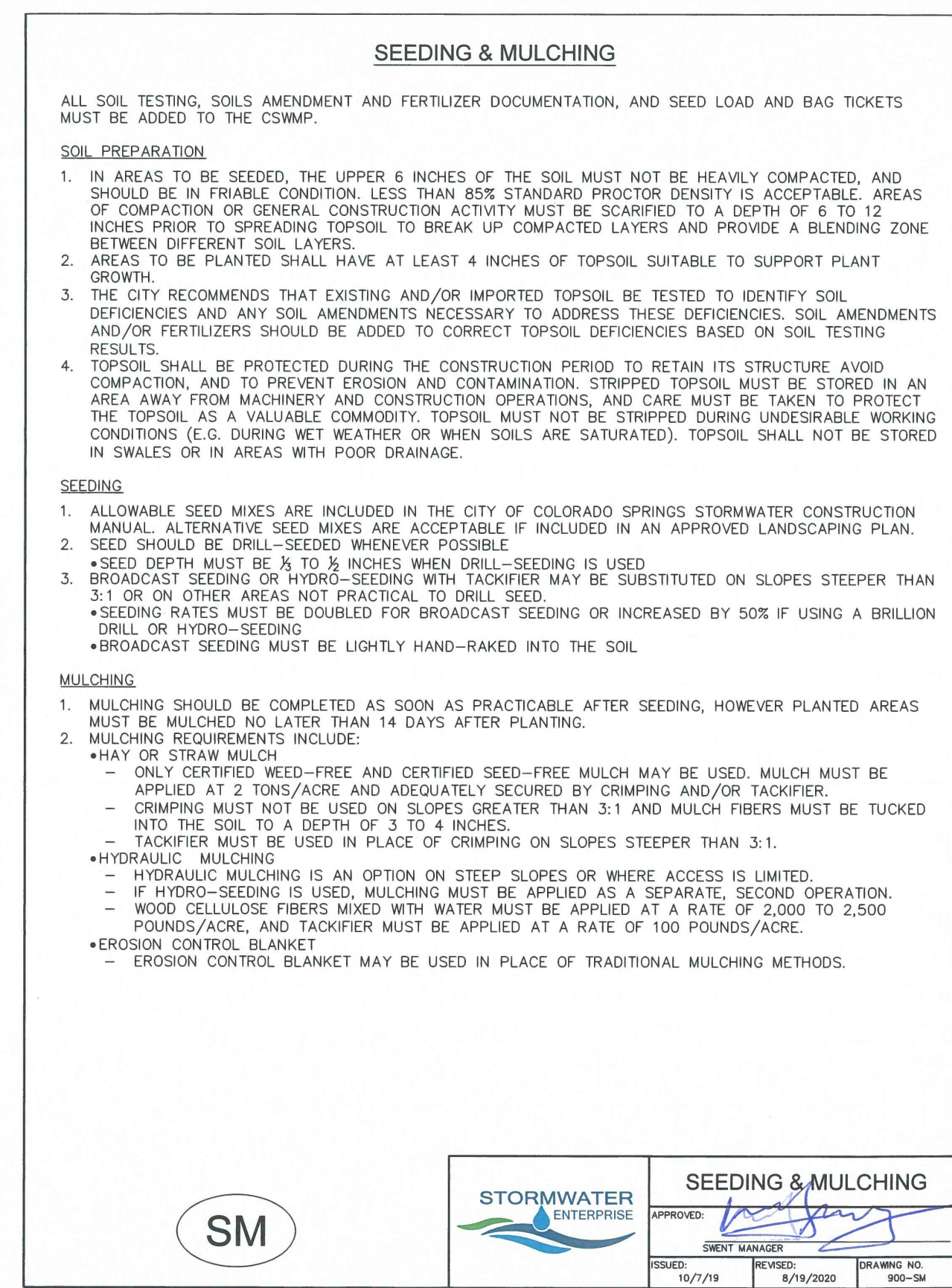
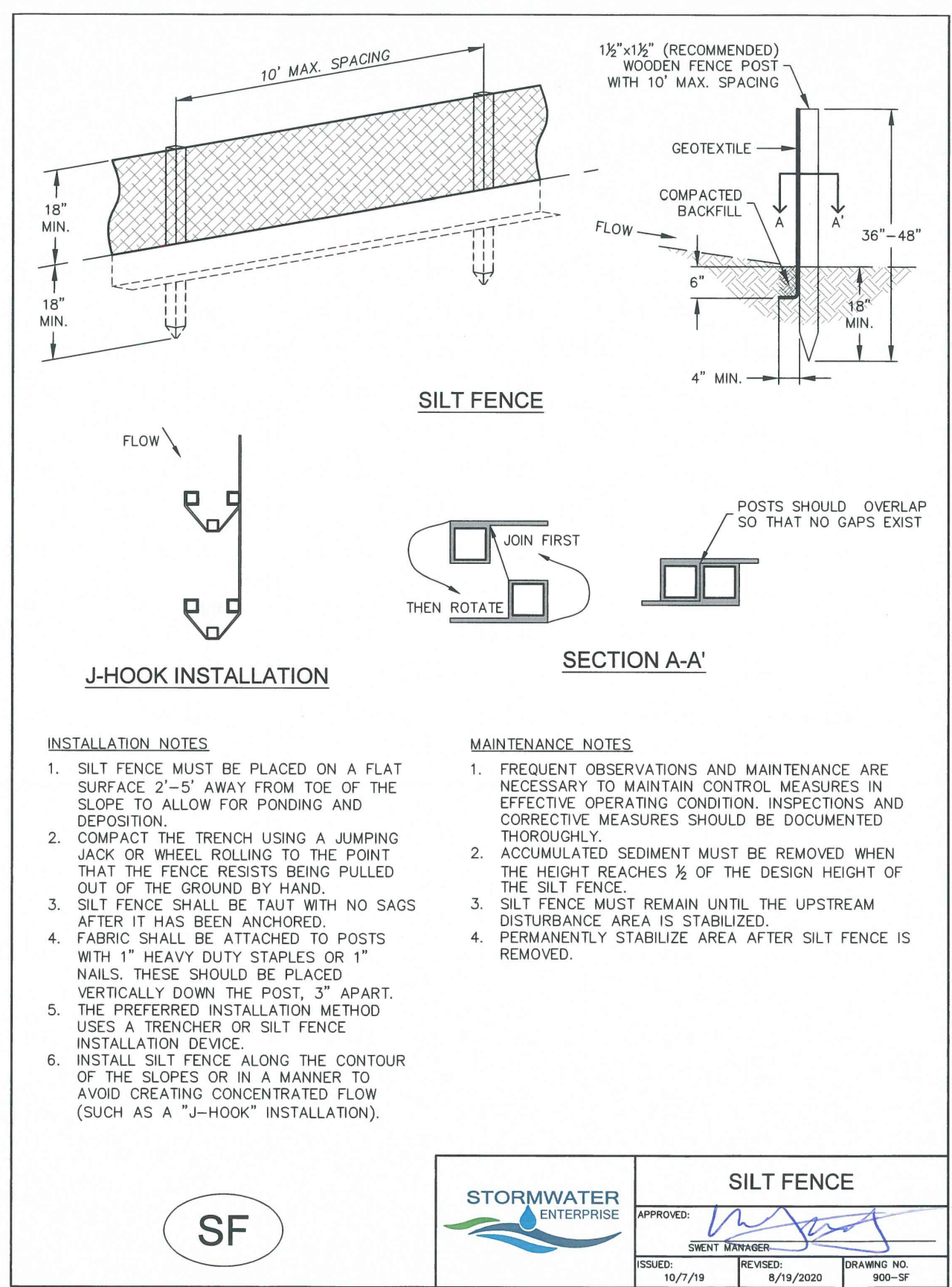
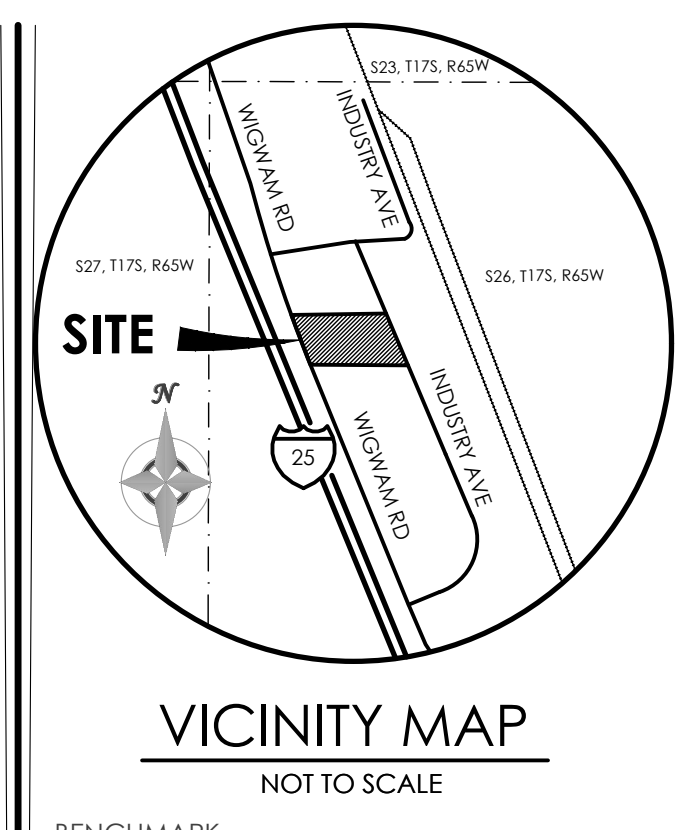
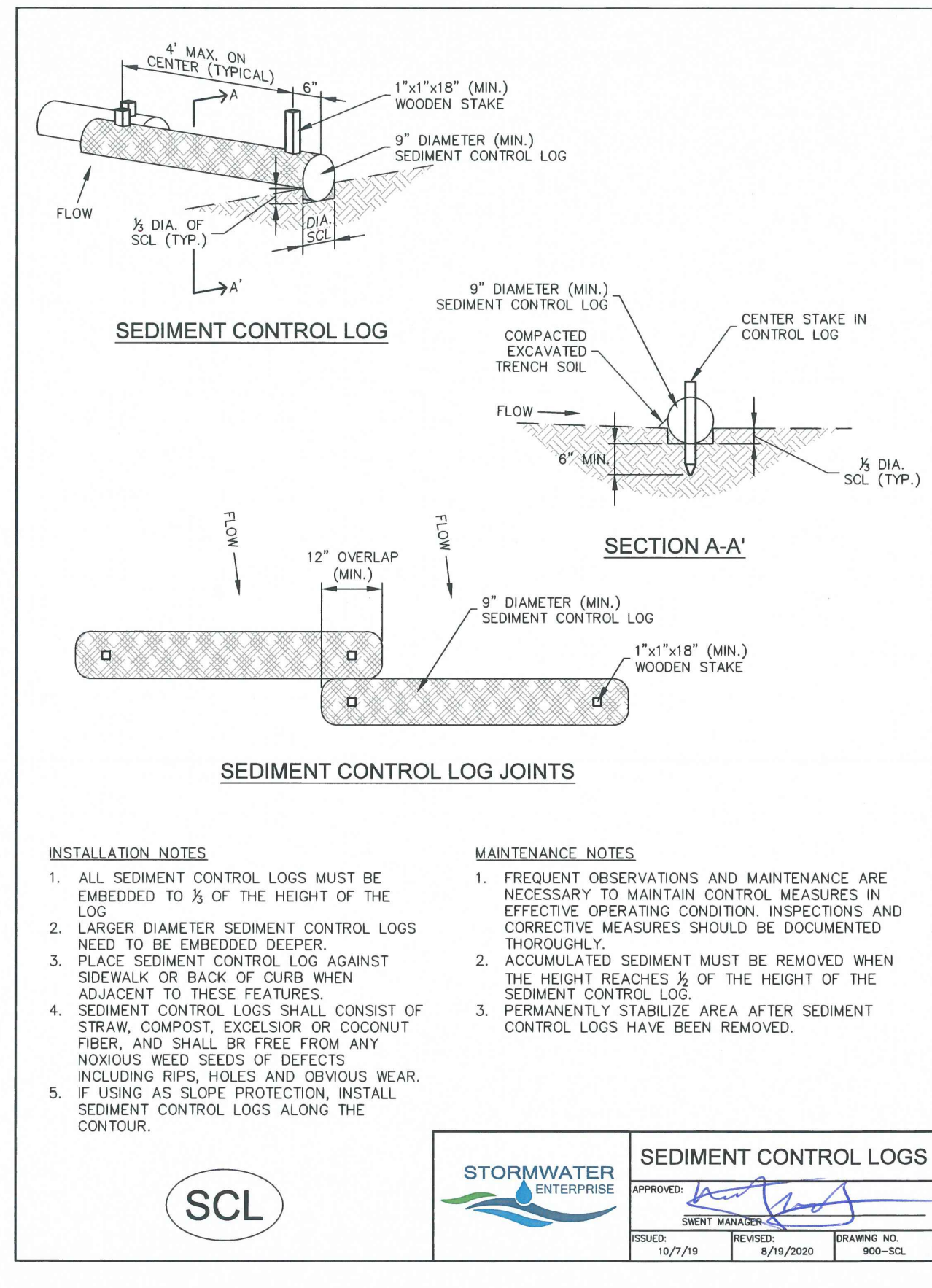
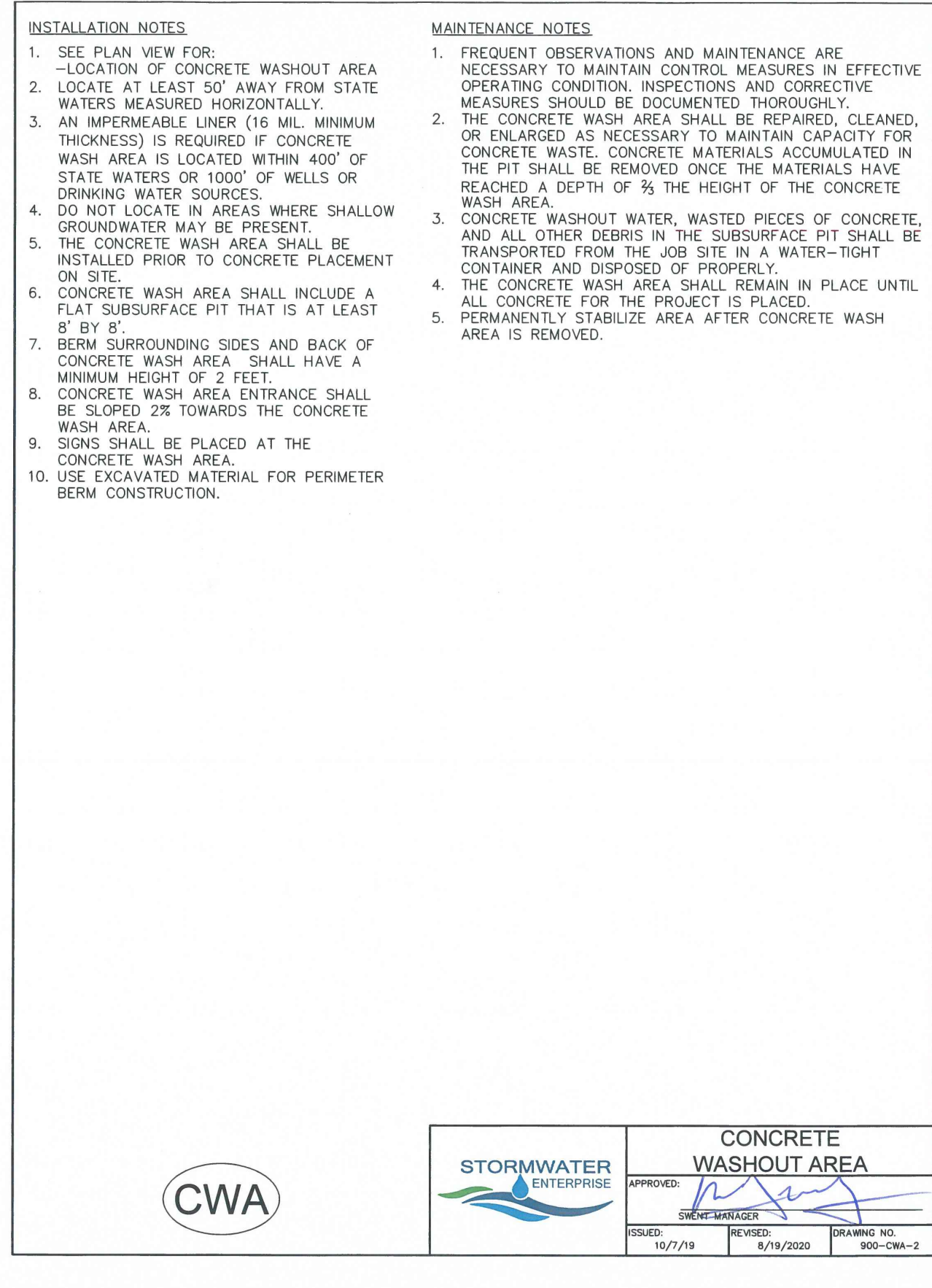
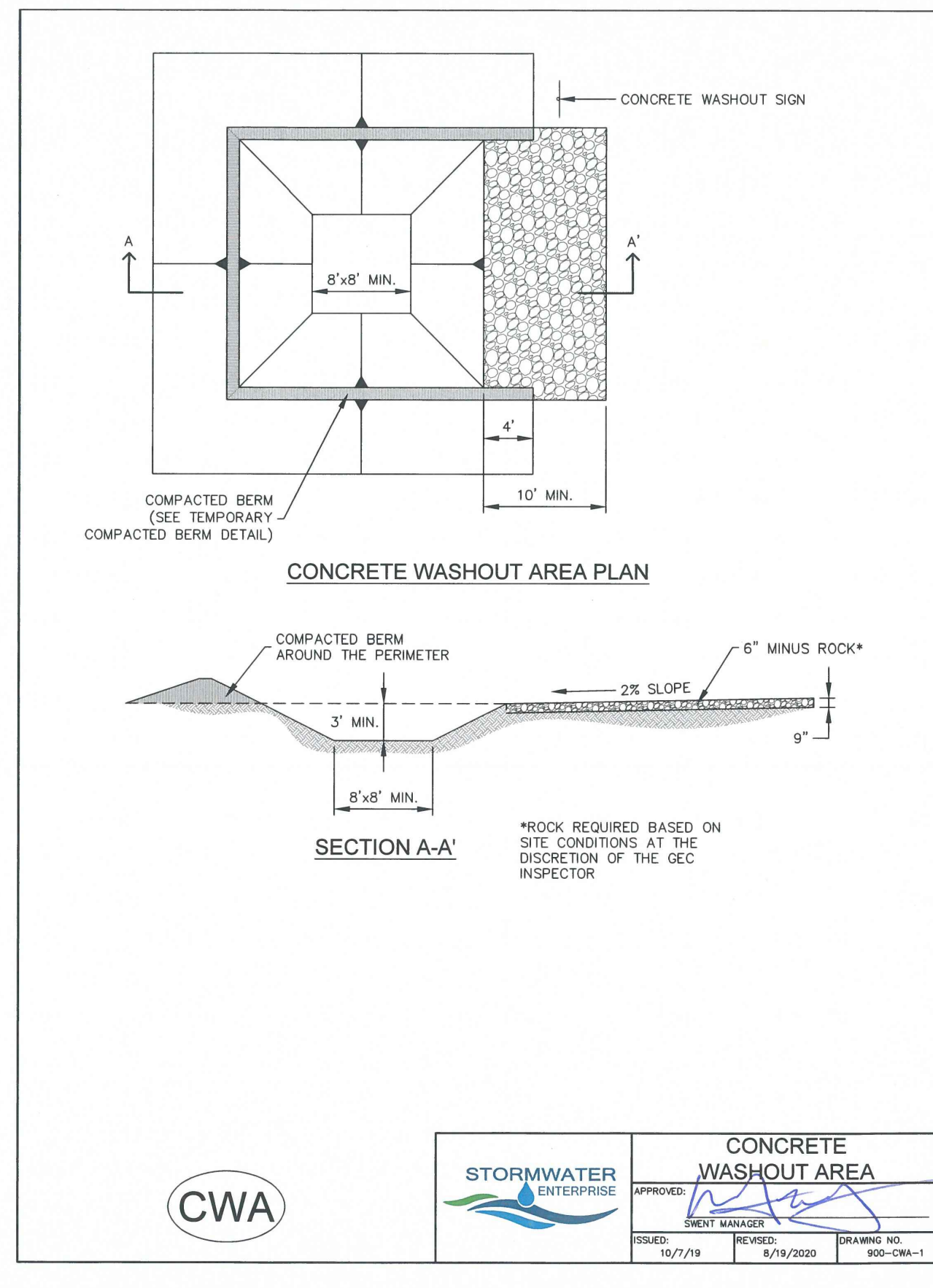
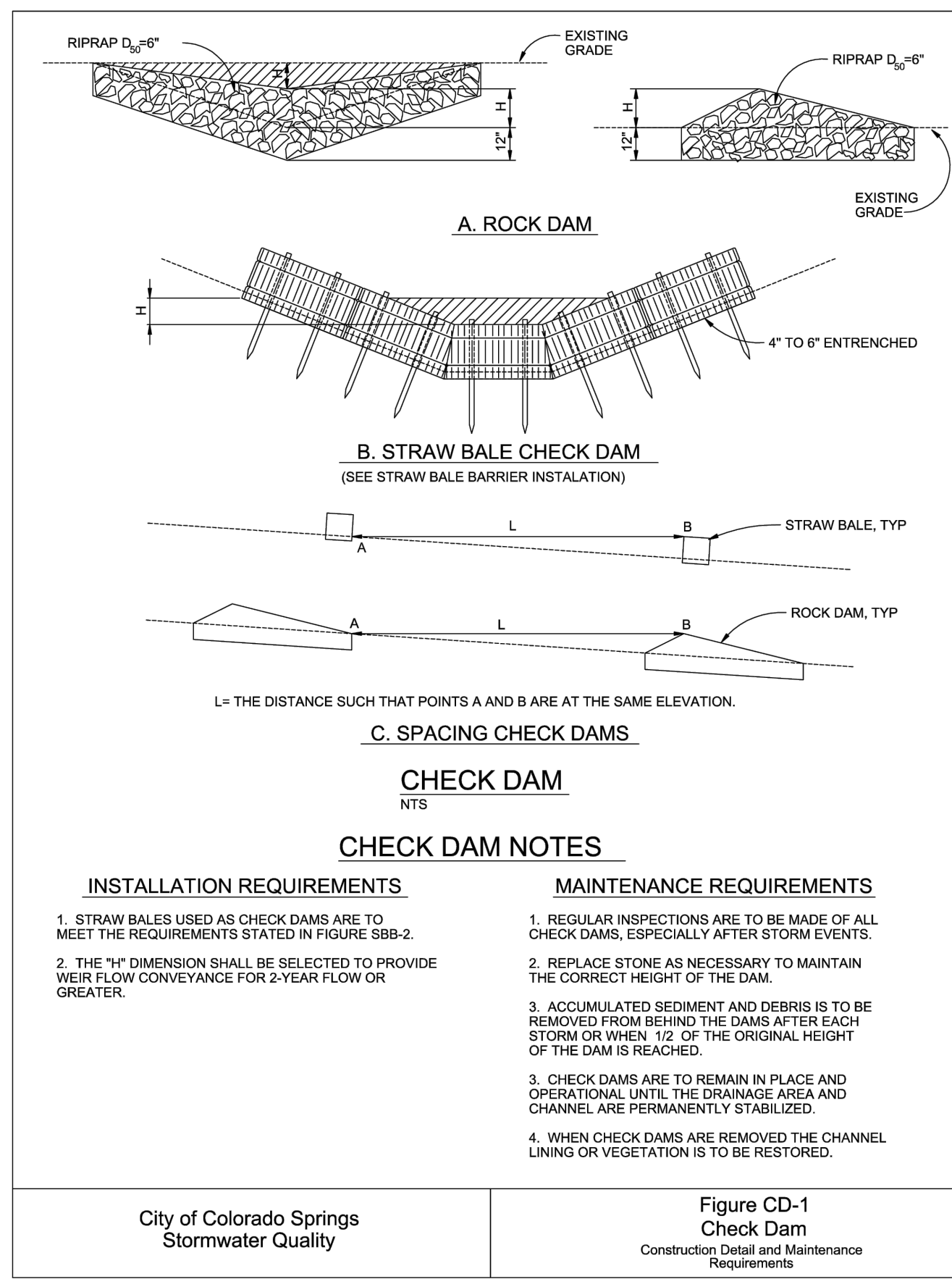
DESIGNED BY: JO
DRAWN BY: JO
CHECKED BY: AS-BUILTS BY: CHECKED BY:

19955 WIGWAM RD
EL PASO COUNTY, CO

GRADING & EROSION CONTROL PLAN

C1.4 MVE PROJECT 61180
MVE DRAWING GEC-EC

MARCH 31, 2023
SHEET 4 OF 6



DESIGNED BY: JO
DRAWN BY: JO
CHECKED BY: AS-BUILTS BY: CHECKED BY:

1995 WIGWAM RD
EL PASO COUNTY, CO

GRADING & EROSION
CONTROL PLAN
EROSION DETAILS

C1.5 MVE PROJECT 61180
MVE DRAWING GEC-ED

MARCH 31, 2023
SHEET 5 OF 6

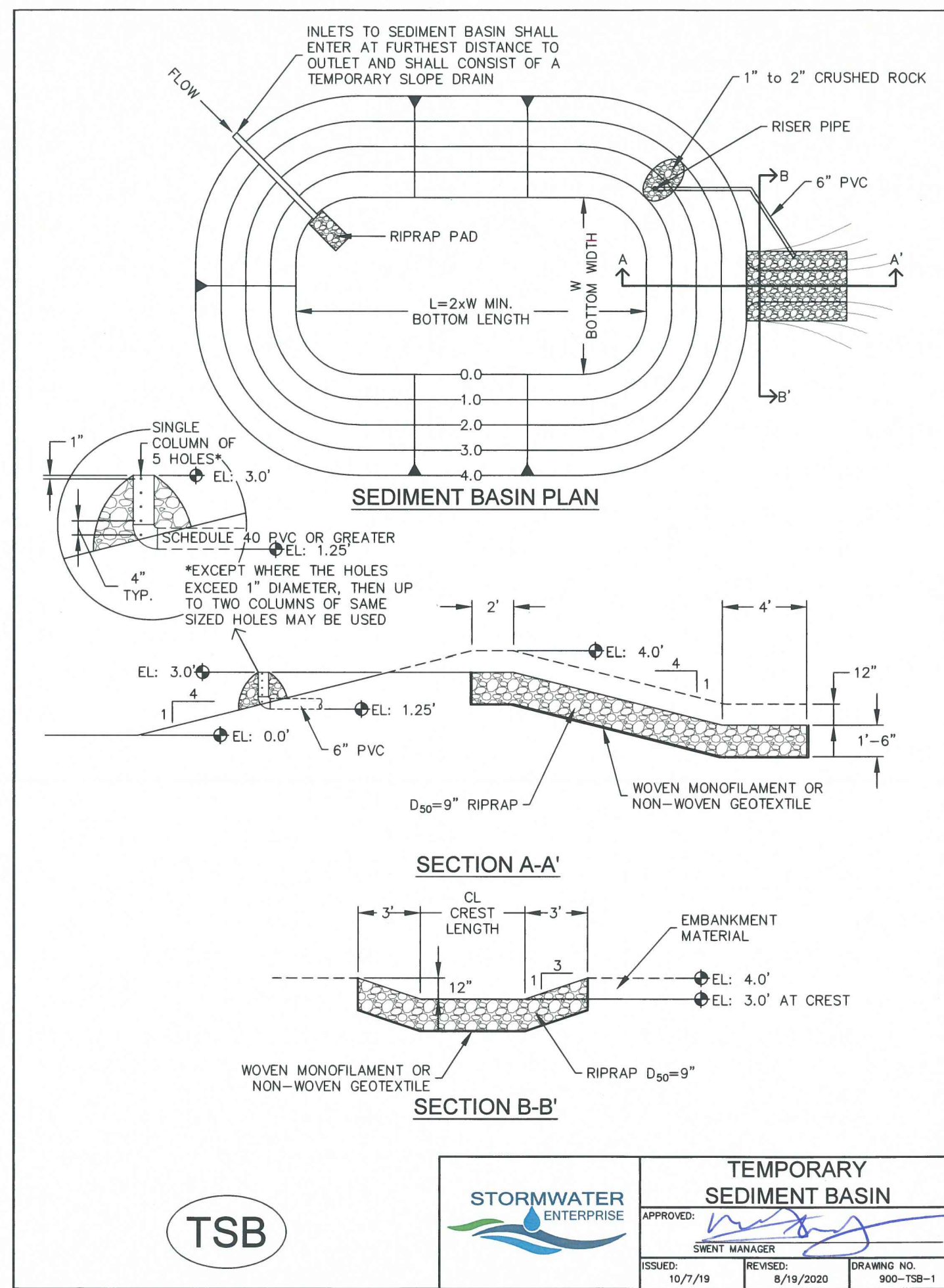


TABLE SB-1, SIZING INFORMATION FOR STANDARD SEDIMENT BASIN

UPSTREAM DRAINAGE AREA (ROUNDED TO NEAREST ACRE), (AC)	BASIN BOTTOM WIDTH (W), (FT)	SPILLWAY CREST LENGTH (CL), (FT)	HOLE DIAMETER (HD), (IN)
1	12 1/2	2	3/8
2	21	3	1/2
3	28	5	5/8
4	33 1/2	6	3/4
5	38 1/2	8	1
6	43	9	1 1/8
7	47 1/2	11	1 1/4
8	51	12	1 1/2
9	55	13	1 5/8
10	58 1/2	15	1 3/4
11	61	16	1 7/8
12	64	18	2
13	67 1/2	19	1 15/16
14	70 1/2	21	1 1/2
15	73 1/2	22	1 5/8

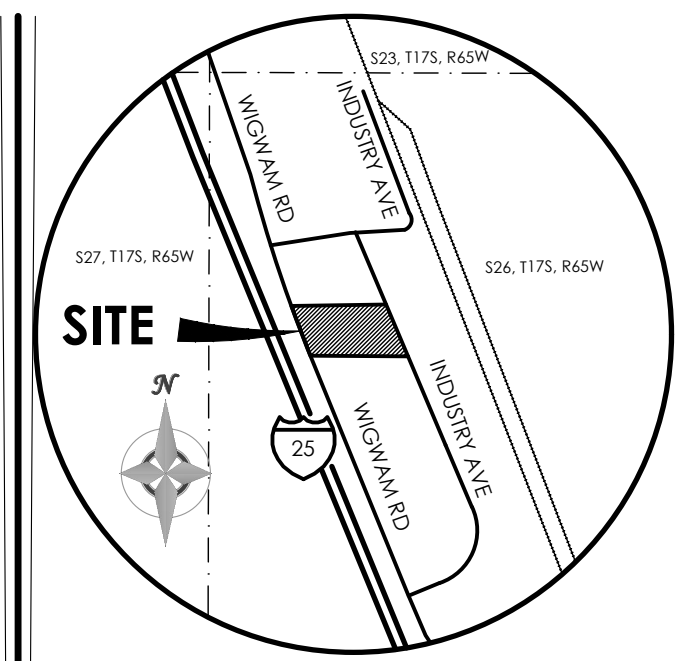
INSTALLATION NOTES

- FOR STANDARD BASIN, BOTTOM DIMENSION MAY BE MODIFIED AS LONG AS BOTTOM AREA IS NOT REDUCED.
- EMBANKMENT MATERIAL SHALL CONSIST OF SOIL FREE OF DEBRIS, ORGANIC MATERIAL, AND ROCKS OR CONCRETE GREATER THAN 3 INCHES, AND SHALL HAVE A MINIMUM OF 15 PERCENT BY WEIGHT PASSING THE NO. 200 SIEVE.
- EMBANKMENT MATERIAL SHALL BE COMPACTED TO AT LEAST 95 PERCENT OF MAXIMUM DENSITY IN ACCORDANCE WITH ASTM D-698.
- PIPE SCHEDULE 40 OR GREATER SHALL BE USED.
- THE DETAILS SHOWN ON THESE SHEETS PERTAIN TO STANDARD SEDIMENT BASIN(S) FOR DRAINAGE AREAS LESS THAN 15 ACRES. SEE CONSTRUCTION DRAWINGS FOR EMBANKMENT, STORAGE VOLUME, SPILLWAY, OUTLET, AND OUTLET PROTECTION DETAILS FOR ANY SEDIMENT BASIN(S) THAT HAVE BEEN INDIVIDUALLY DESIGNED FOR DRAINAGE AREAS LARGER THAN 15 ACRES. DESIGN CALCULATIONS MUST BE APPROVED PRIOR TO IMPLEMENTATION.

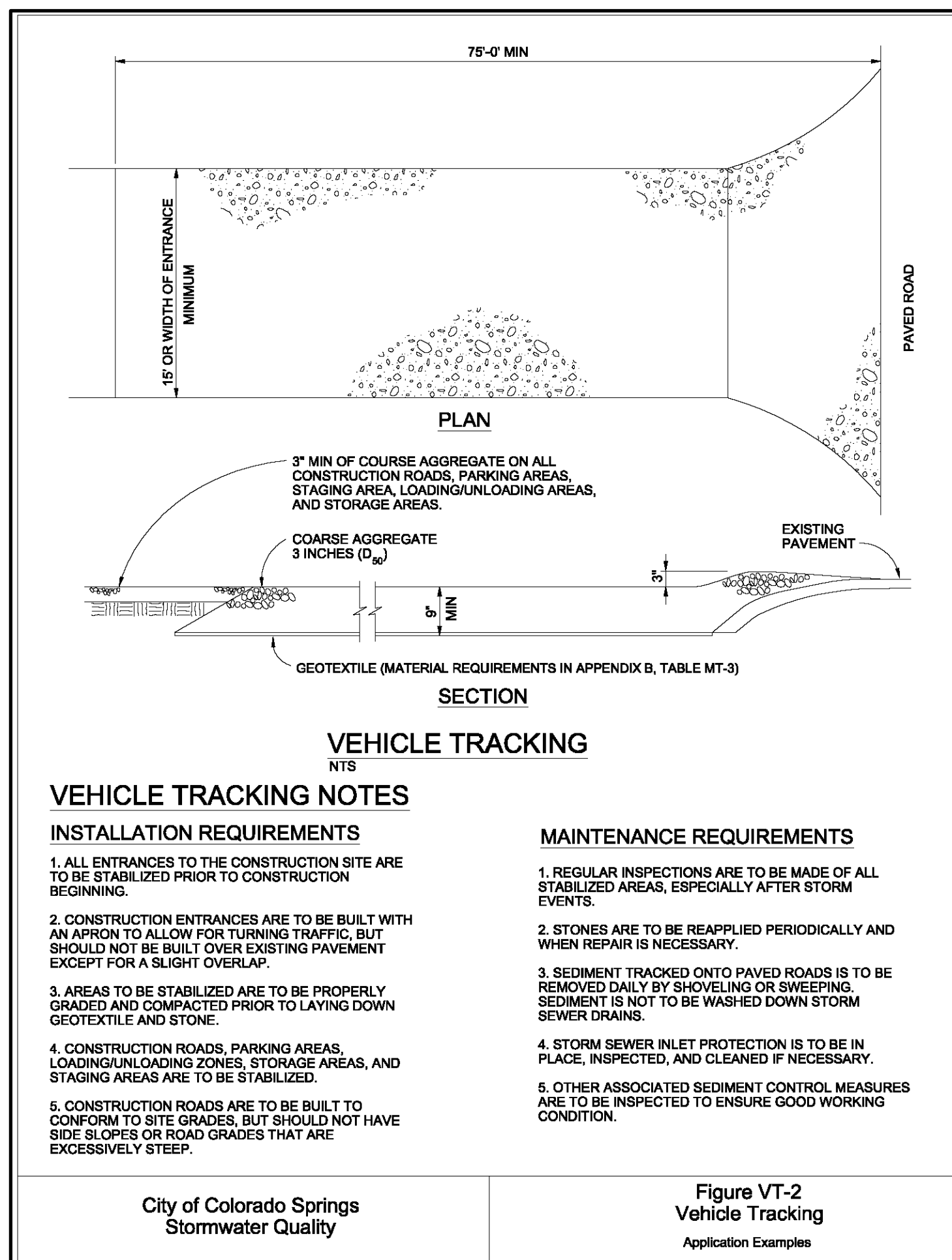
MAINTENANCE NOTES

- FREQUENT OBSERVATIONS AND MAINTENANCE ARE NECESSARY TO MAINTAIN CONTROL MEASURES IN EFFECTIVE OPERATING CONDITION. INSPECTIONS AND CORRECTIVE MEASURES SHOULD BE DOCUMENTED THOROUGHLY.
- SEDIMENT ACCUMULATED IN BASIN SHALL BE REMOVED AS NEEDED TO MAINTAIN CONTROL MEASURE EFFECTIVENESS, TYPICALLY WHEN SEDIMENT DEPTH REACHES ONE FOOT (I.E. TWO FEET BELOW SPILLWAY CREST).
- SEDIMENT BASINS ARE TO REMAIN IN PLACE UNTIL THE UPSTREAM DISTURBED AREA IS PERMANENTLY STABILIZED.
- PERMANENTLY STABILIZE AREA AFTER SEDIMENT BASIN REMOVAL.

ISSUED:	10/7/19	REVISION:	8/19/2020	DRAWING NO:	900-TSB-2
TEMPORARY SEDIMENT BASIN APPROVED: [Signature] CLIENT MANAGER: [Signature]					



BENCHMARK



REVISIONS

DESIGNED BY _____
 DRAWN BY JO _____
 CHECKED BY _____
 AS-BUILTS BY _____
 CHECKED BY _____

1995 WIGWAM RD
EL PASO COUNTY, CO

GRADING & EROSION
CONTROL PLAN
EROSION DETAILS

C1.6 MVE PROJECT 61180
MVE DRAWING GEC-ED

MARCH 31, 2023
SHEET 6 OF 6