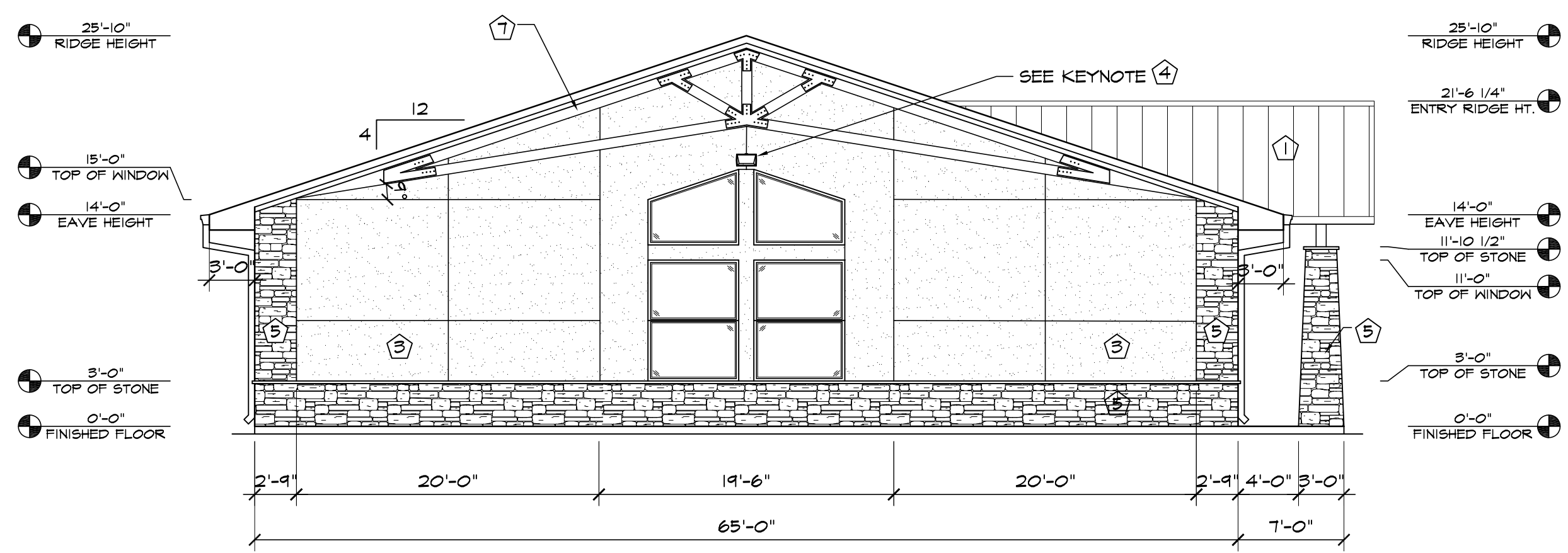
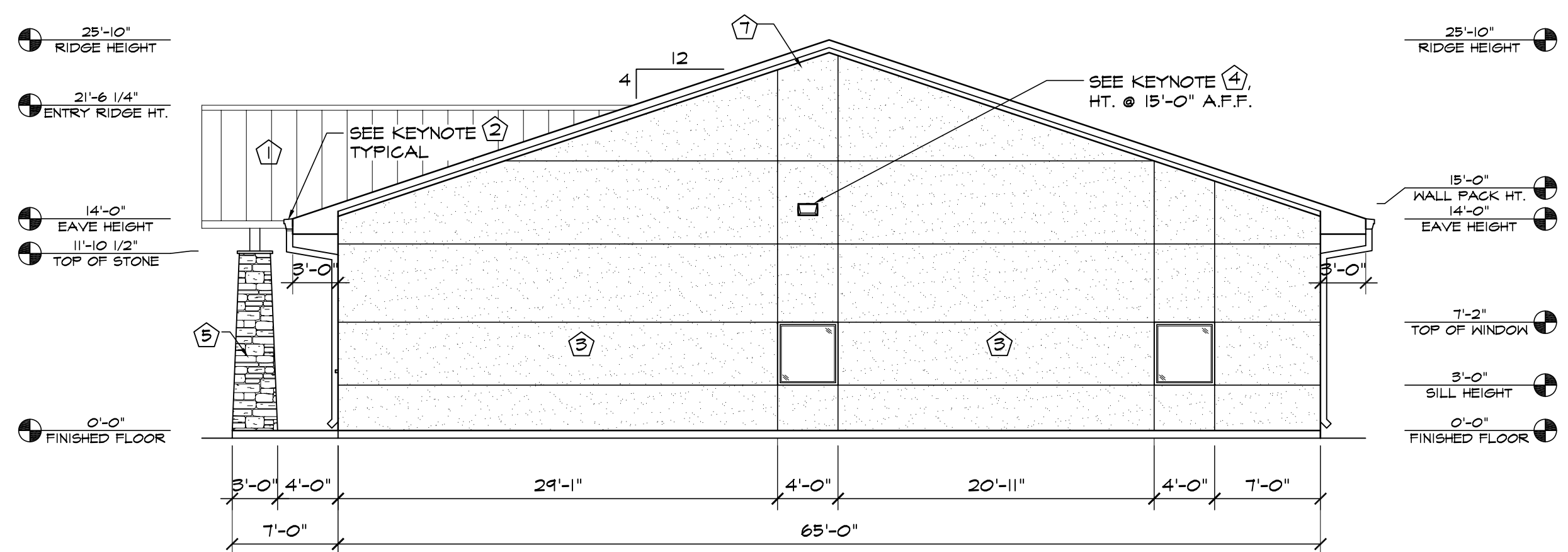


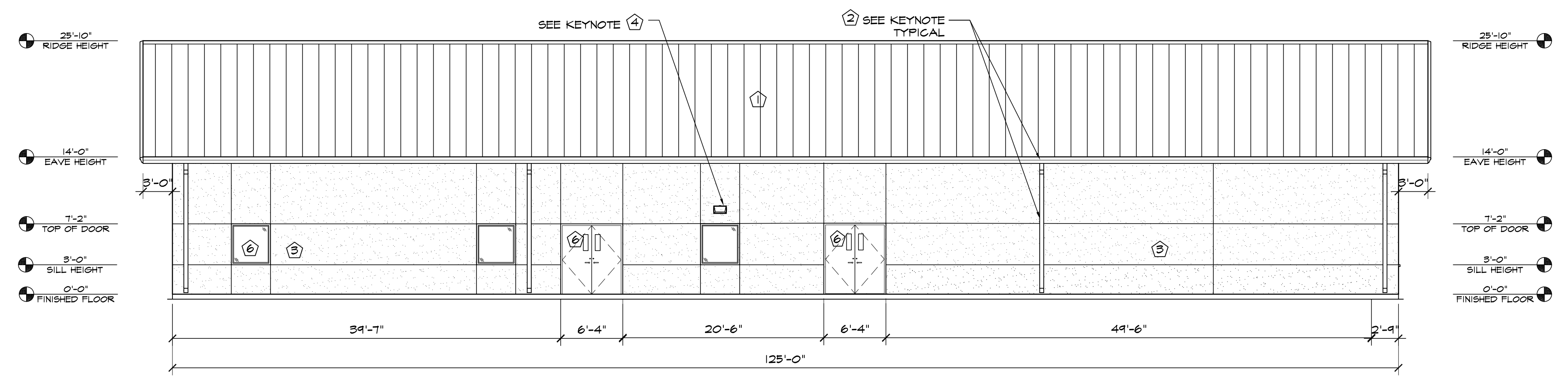
1 **SOUTHEAST ELEVATION**  
SCALE: 1/8"=1'-0"



2 **SOUTHWEST ELEVATION**  
SCALE: 1/8"=1'-0"



3 **NORTHEAST ELEVATION**  
SCALE: 1/8"=1'-0"



4 **NORTHWEST ELEVATION**  
SCALE: 1/8"=1'-0"

ELEVATION KEY NOTES	
1	PREFINISHED STANDING SEAM ROOF BY METAL BUILDING PROVIDER
2	PREFINISHED GUTTER & DOWNSPOUTS BY METAL BUILDING PROVIDER
3	3/4" STUCCO FINISH SYS. W/ EXPANSION JOINT-120 SF MAX AREA
4	WALL PACK LIGHT TOP OF LIGHT @ 9'-0" A.F.F. SEE ELECT. PLANS, U.N.O.
5	STONE VENEER W/ 2" CAP INSTALLED W/ SCHLUTER TRIM
6	SEE SCHEDULES ON "A" SHEETS FOR ALL DOOR INFORMATION
7	DECORATIVE TIMBER TRUSS, SEE SHEET S2.2 FOR FURTHER FRAMING DETAILS

**HAMMERS CONSTRUCTION INC.**  
COMMERCIAL GENERAL CONTRACTORS SPECIALIZING IN DESIGN/BUILD  
PRESIDENT: STEVE R. HAMMERS  
VICE PRES: DAVID J. HAMMERS  
1411 WOOLSEY HEIGHTS  
COLORADO SPRINGS, CO 80915  
(719) 570-1589 FAX (719) 570-7008  
www.hammersconstruction.com

THIS DRAWING CONTAINS MATERIAL & INFORMATION WHICH MAY NOT BE REPRODUCED WITHOUT WRITTEN CONSENT OF HAMMERS CONSTRUCTION INC. THESE DRAWINGS ARE INTENDED TO BE USED ONLY BY HAMMERS CONSTRUCTION & ITS REPRESENTATIVES. THESE DRAWINGS HAVE NOT BEEN PREPARED FOR ANY OTHER PURPOSE THAN TO INDICATE THE GENERAL FEATURES AND PLACEMENT OF THE PROPOSED PROJECT. COPYRIGHT © 2024 HAMMERS CONSTRUCTION

**CATHEDRAL ROCK CHURCH**  
846 STRUTHERS RANCH RD.  
COLORADO SPRINGS, CO 80921  
EL PASO COUNTY, COLORADO

DATE: SEPT 27, 2024  
DRAWN BY: D. AQUINO  
PROJ. MGR: J. BUTLER  
SCALE: SEE PLAN  
APPROVED BY:  
JOB NO: 1379

RESUBMITTALS:
