

REVIEW: STREET DESIGN, CURB & GUTTER REVIEW, FINAL REVIEW

DATE: _____
 DATE: _____
 DATE: _____

DESIGN DATA: SIDEWALKS, WIDTH: _____, DETACHED, 6" FROM P/L, AC SURFACE: _____, AC THICKNESS: _____, ASPHALT THICKNESS: _____, AC SURFACE: _____, AC THICKNESS: _____, CLASS 6, AGGREGATE BASE THICKNESS: _____, CURB TYPE: 1 D 2 D 3, R/W WIDTH: _____, F/C/F/C: _____

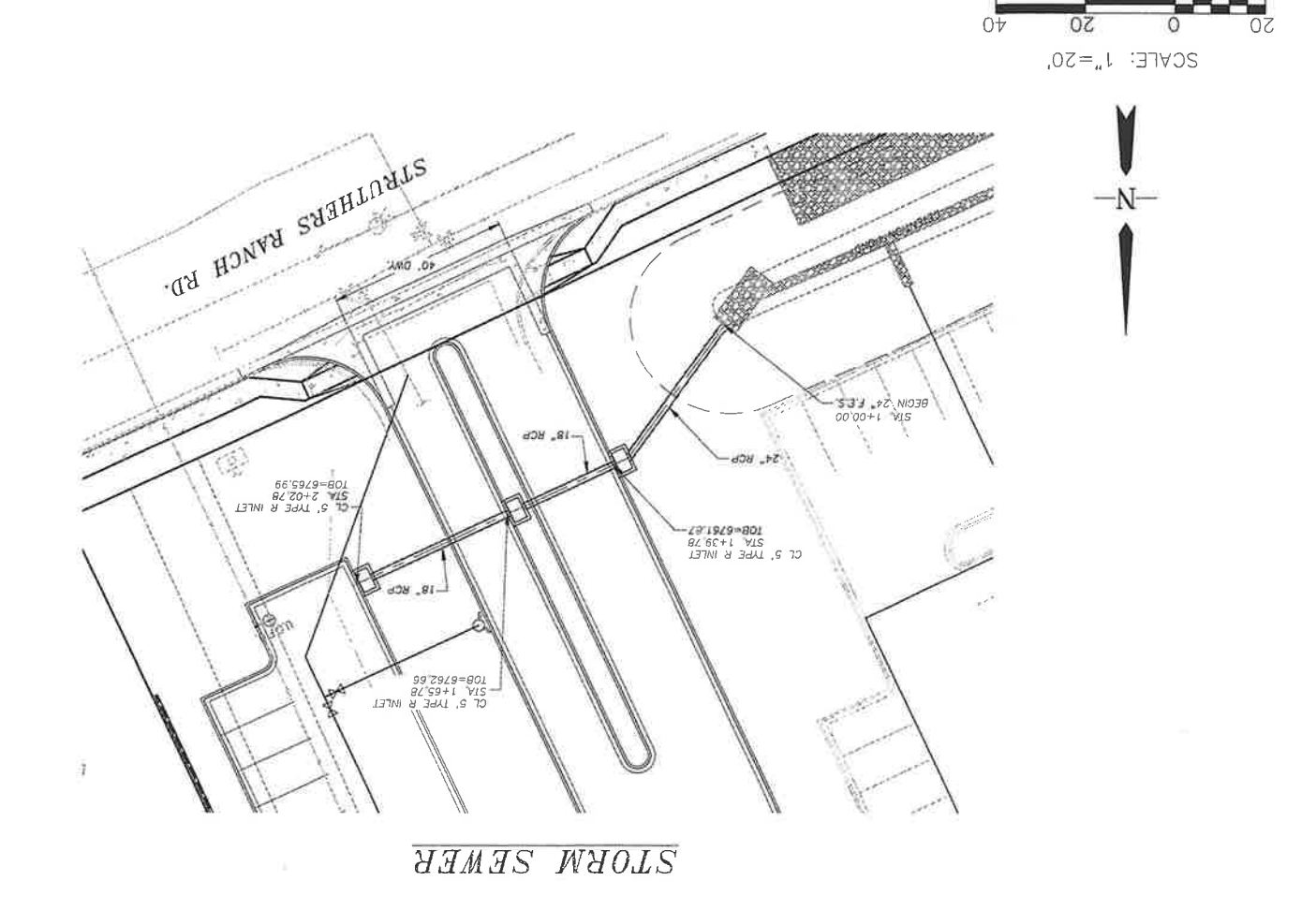
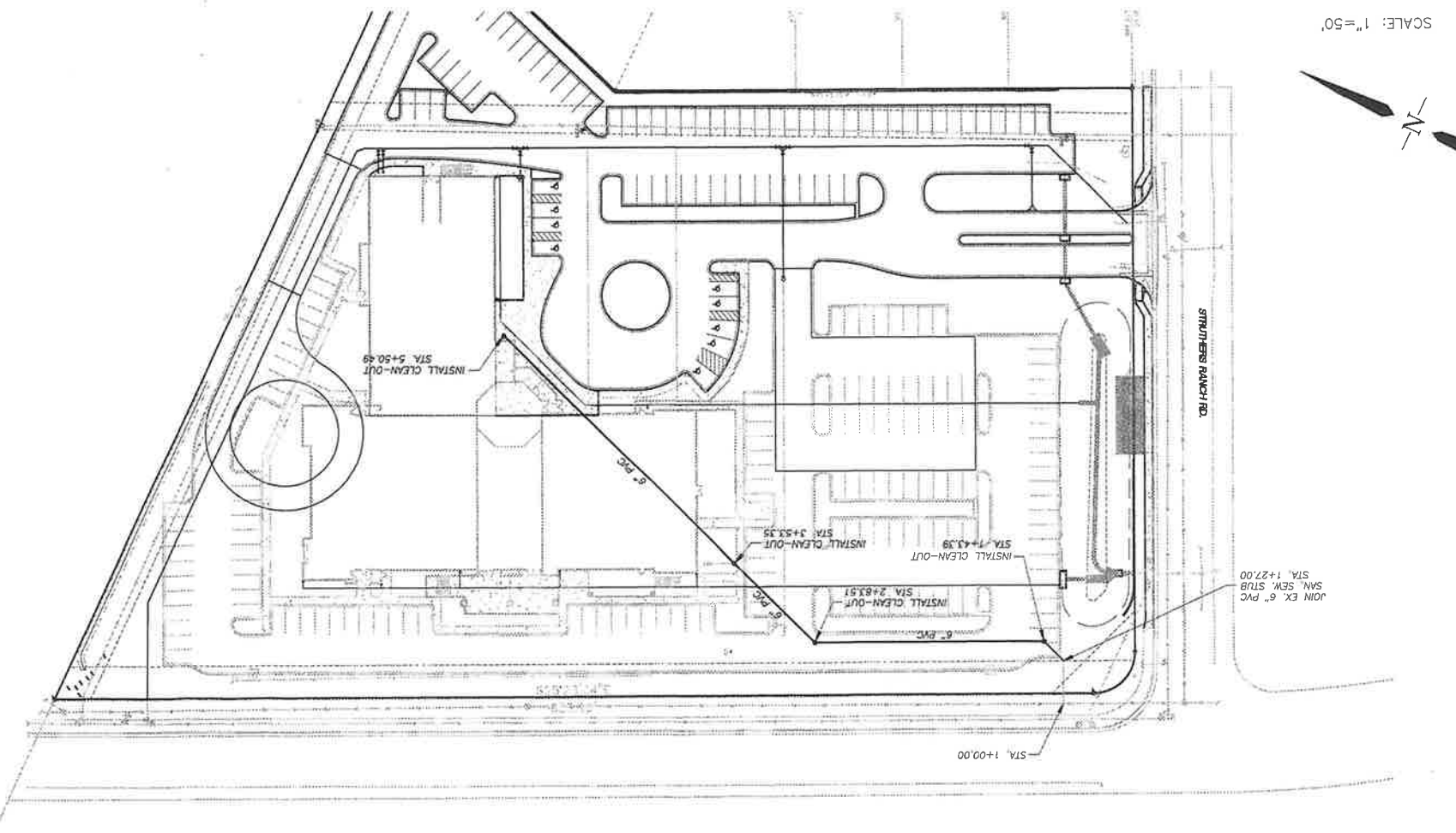
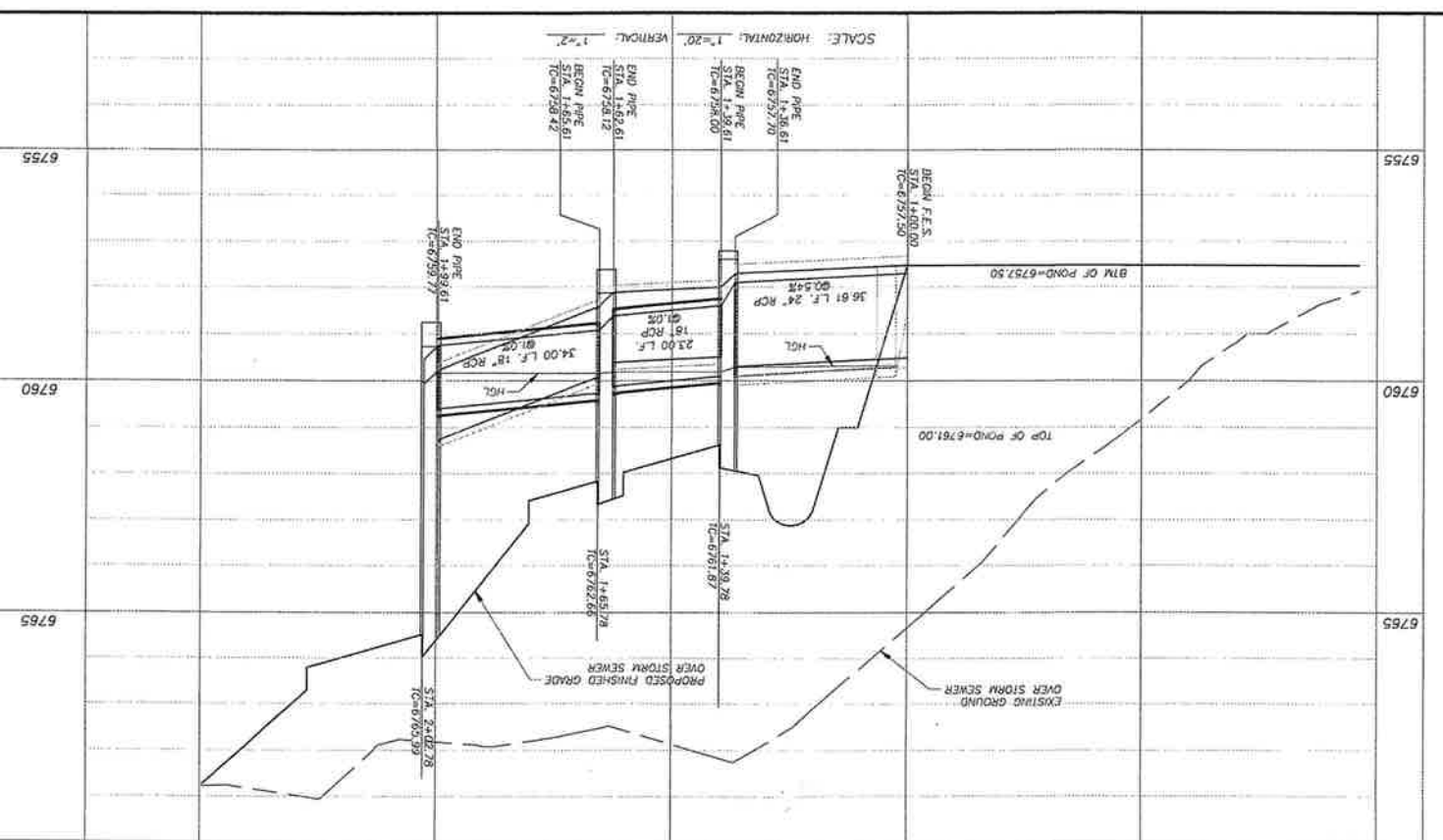
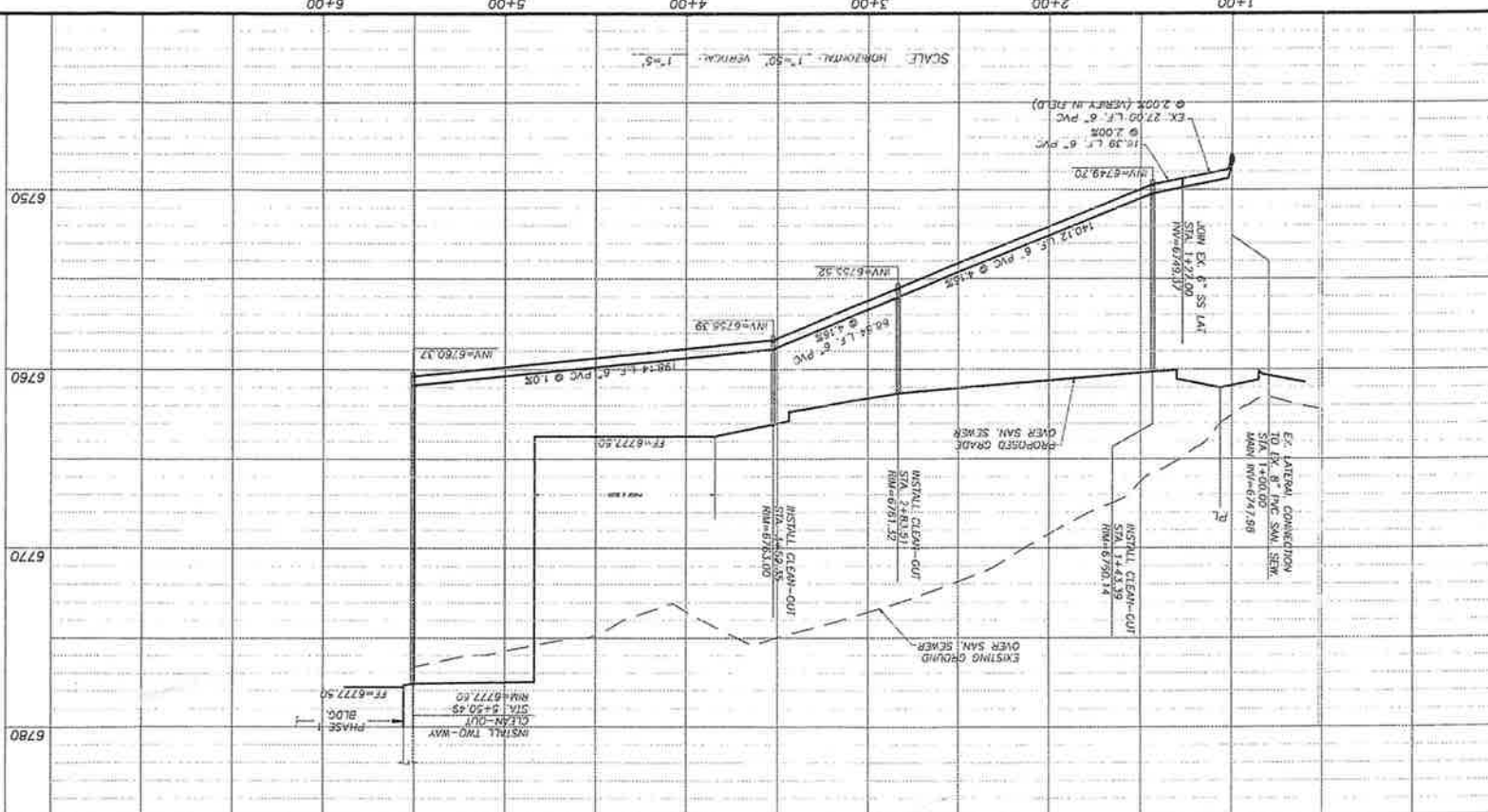
FILED IN ACCORDANCE WITH SECTION 15-3-906 OF COLORADO SPRINGS 1980, AS AMENDED

NO.	DESCRIPTION	DATE

REVISIONS:

ENGINEER: _____
 DESIGNED BY: BG DATE: 12-22-15
 DRAWN BY: BG DATE: 12-22-15
 CHECKED BY: CRC DATE: 8-18-16

PROJECT: CATHEDRAL ROCK CHURCH
 SHEET TITLE: SANITARY SEWER SERVICE & STORM SEWER P&P
 FROM 1+00.00 TO 5+50.49





CALL BEFORE YOU DIG ...
811 DIAL 811
 48 HOURS BEFORE YOU DIG. CALL UTILITY LOC. ELECTRIC, WATER AND GAS.

nine DESIGN LTD.
 Landscape Architects & Planners
 Colorado Springs, Colorado
 719.529.0337
 nine@ninedesign.com
 www.ninedesign-ca.com

REVISIONS

1	Phase One Final	01-28-16
2	County Comment <td>04-15-16</td>	04-15-16
3	county comment <td>8-22-16</td>	8-22-16

CATHEDRAL ROCK CHURCH
 MONUMENT, COLORADO
 PRELIMINARY LANDSCAPE PLAN
 PHASE ONE

PROJECT NO. 15003
 DATE: 10-13-15
 SCALE:

Code Name	Common Name	Scientific Name	Quantity	Planting Size
Abcon	White fir	Abies concolor	12	4" - 6"
Aplic	Norway maple	Acer platanoides 'Crimson King'	9	2"-Cal
Arme	Black Chokeberry	Aronia melanocarpa	9	5-Gal
Coin	Blue Mist 'Dark Knight'	Caryopteris incano	27	5-Gal
Crvl	Green hawthorn	Crataegus vridis	12	15-Gal
Gits	Sunburst Honey Locust	Gleditsia triacanthos 'Sunburst'	3	2"-Cal
AVG	Blue Avena Grass	Helictotrichon sempervirens	96	1-Gal
JuchP	Pfitzer Juniper	Juniperus chinensis 'Pfitzeriana'	35	5-Gal
Pled	Pinon pine	Pinus edulis	13	4" - 6"
Pini	Austran pine	Pinus nigra	14	4" - 6"
WSC	Western Sand Cherry	Prunus besseyi	22	5-Gal
Quma	Bur oak	Quercus macrocarpa	3	2"-Cal
Quro	English oak	Quercus robur	5	2"-Cal
Lbs	Little Bluestem	Schizachyrium scoparium	37	1-Gal

SITE CATEGORY CALCULATIONS

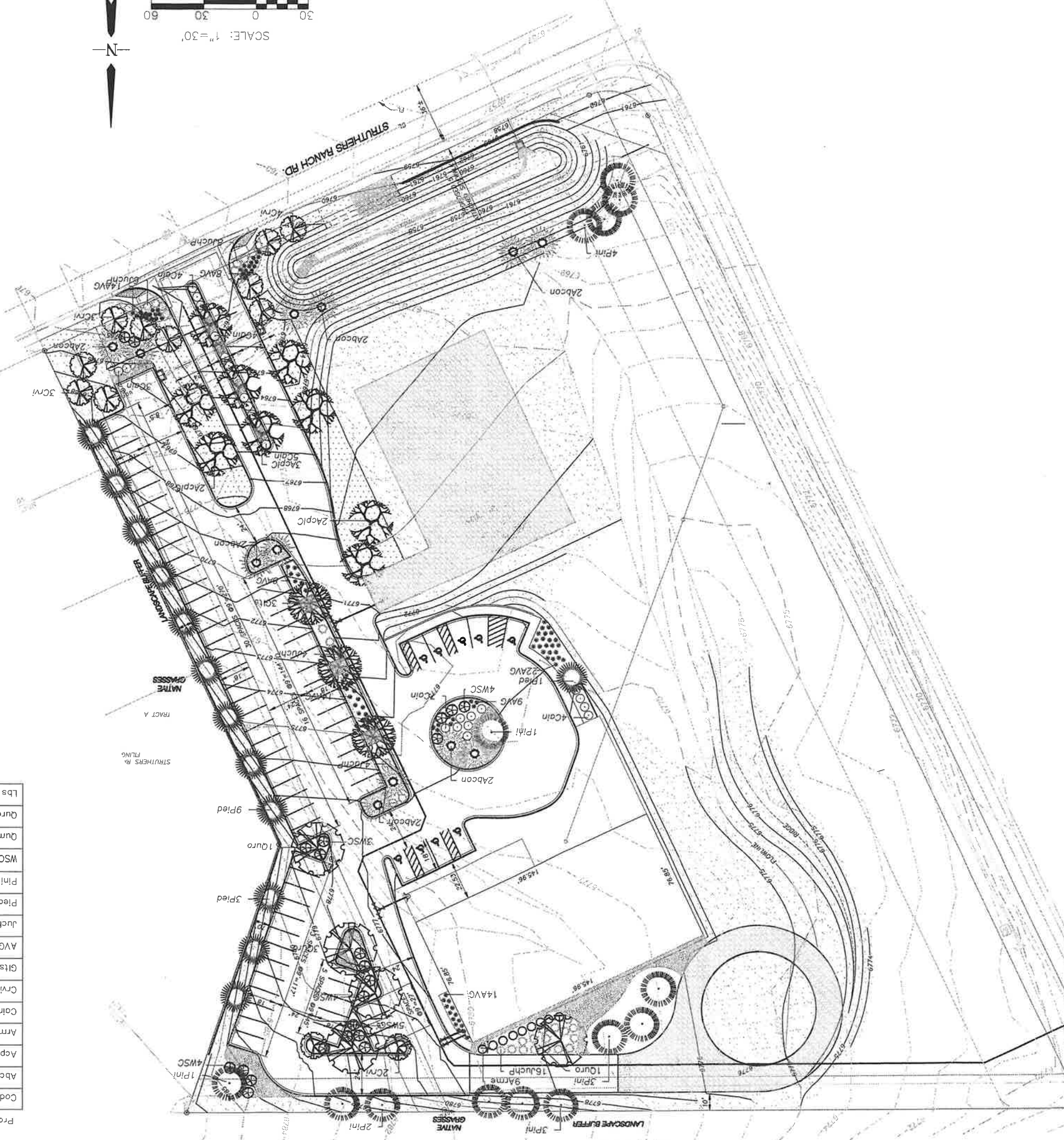
ZONING	PUD
LOT AREA	5.08-AC
BLDG. AREA	37,750
PARKING AREA	

INTERNAL LANDSCAPING

NET SITE AREA (SF) (LESS PUBLIC R.O.W.)	5.08 Acres
PERCENT MINIMUM INTERNAL AREA (%)	USE 5%
INTERNAL AREA (SF) REQUIRED/PROVIDED	10,890/14,800
INTERNAL TREES (1/500 SF) REQUIRED/PROVIDED	22/34
SHRUB SUBSTITUTES REQUIRED/PROVIDED	-/-
ORNAMENTAL GRASS SUBSTITUTES REQUIRED/PROVIDED	-/-
PERCENT GROUND PLANE VEG. REQUIRED/PROVIDED	100%/100%

PARKING

NUMBER OF VEHICLE SPACES PROVIDED	222
SHADE TREES REQUIRED/PROVIDED (1/15 SPACES)	15/17
VEHICLE LOT FRONTS	-/-
LENGTH OF FRONTS (FT) (EXCLUDING DRIVEWAYS)	-/-
2/3 LENGTH OF FRONTS	-/-
MIN 3' SCREENING PLANTS REQUIRED/PROVIDED	-/-



CATHEDRAL ROCK CHURCH
MONUMENT, COLORADO
PRELIMINARY LANDSCAPE PLAN

REVISIONS

2	County Comment	08-22-16
3	County comment	

NINE DESIGN LTD.
Landscape Architects & Planners
Colorado Springs, Colorado
719.528.7037
nine@ninedesign.com
www.ninedesign-cs.com

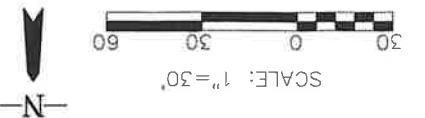
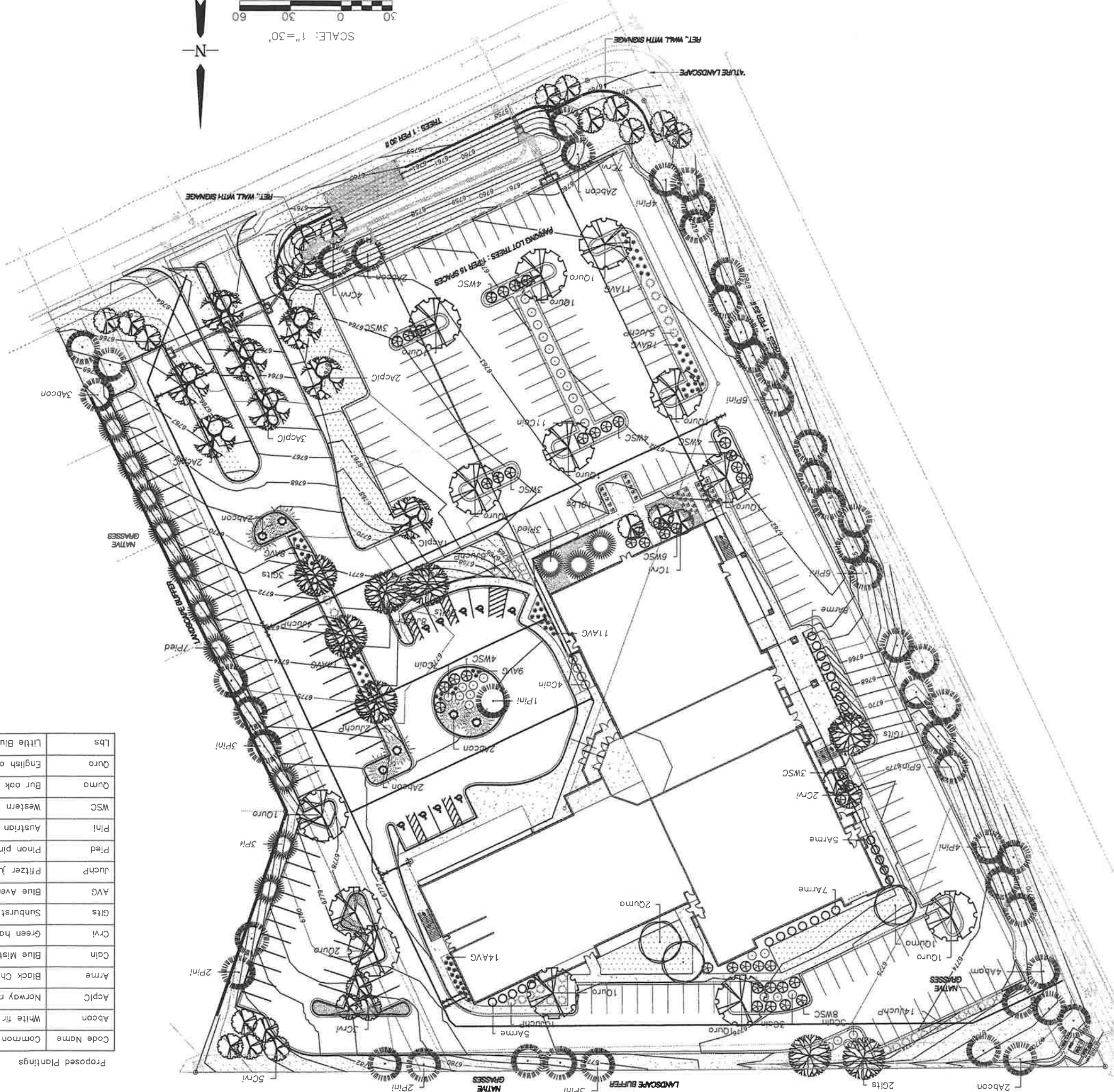
NOT FOR CONSTRUCTION:
THESE PLANS ARE INTENDED FOR SUBMITTAL, REVIEW AND APPROVAL BY CLIENT AND CITY/COUNTY AGENCIES AND SHOULD NOT BE USED FOR CONSTRUCTION OR LANDLIFT.

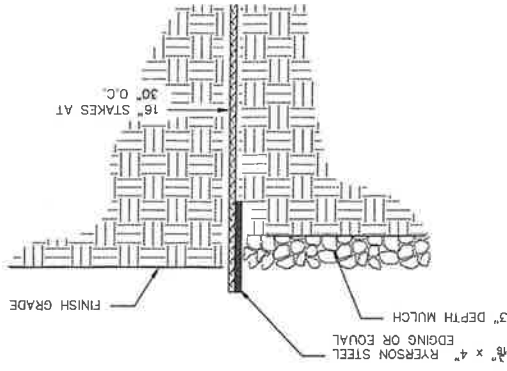
Proposed Plantings

Code Name	Common Name	Scientific Name	Quantity	Planting Size
Abcon	White fir	Abies concolor	6	4' - 6'
Aplic	Norway maple	Acer platanoides 'Crimson King'	8	2" - Cal
Arme	Black Chokeberry	Aronia melanocarpa	26	5-Gal
Cain	Blue Mist 'Dark Knight'	Corypterus incana	30	5-Gal
Crvl	Green hawthorn	Crataegus viridis	27	15-Gal
Gits	Sunburst Honey Locust	Gleditsia triacanthos 'Sunburst'	8	2" - Cal
AVC	Blue Avena Grass	Helictotrichon sempervirens	85	1-Gal
JuchP	Pfitzer Juniper	Juniperus chinensis 'Pfitzerana'	35	5-Gal
Pied	Pinon pine	Pinus edulis	13	4' - 6'
Pini	Austran pine	Pinus nigra	44	4' - 6'
WSC	Western Sand Cherry	Prunus besseyi	39	5-Gal
Qumo	Bur oak	Quercus macrocarpa	3	2" - Cal
Quro	English oak	Quercus robur	13	2" - Cal
Lbs	Little Bluestem	Schizachyrium scoparium	37	1-Gal

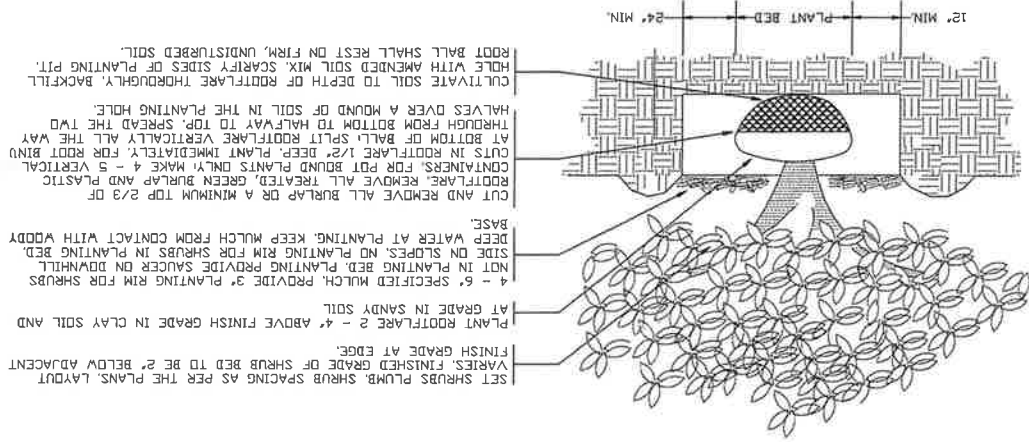
SITE CATEGORY CALCULATIONS

ZONING	PUD
LOT AREA	5.08-AC
BLDG., AREA	37,750
PARKING AREA	
NET SITE AREA (SF) (LESS PUBLIC R.O.W.)	5.08 Acres
PERCENT MINIMUM INTERNAL AREA (%)	USE 5%
INTERNAL AREA (SF) REQUIRED/PROVIDED	10,890/14,800
INTERNAL TREES (1/500 SF) REQUIRED/PROVIDED	22/34
SHRB SUBSTITUTES REQUIRED/PROVIDED	-/-
ORNAMENTAL GRASS SUBSTITUTES REQUIRED/PROVIDED	-/-
PERCENT GROUND PLANE VEG. REQUIRED/PROVIDED	100%/100%
PARKING	
NUMBER OF VEHICLE SPACES PROVIDED	222
SHADE TREES REQUIRED/PROVIDED (1/15 SPACES)	15/17
VEHICLE LOT FRONTAGES	
LENGTH OF FRONTAGES (FT) (EXCLUDING DRIVEWAYS)	
2/3 LENGTH OF FRONTAGES	
MIN 3' SCREENING PLANTS REQUIRED/PROVIDED	-/-



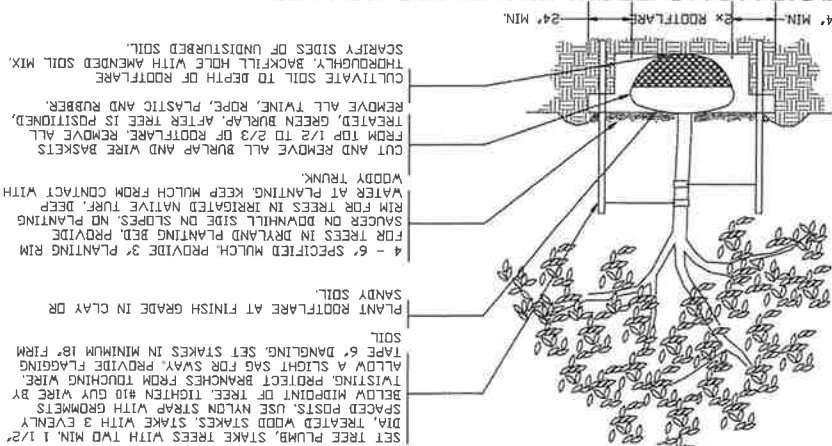


2-2 9-0/ED-2 0 SHRUB PLANTING DETAIL



NOTES:
 * PRUNE ONLY DEAD OR BROKEN BRANCHES IMMEDIATELY PRIOR TO PLANTING.
 * KEEP PLANTS MOIST AND SHADED UNTIL PLANTING.
 * AMENDED BACKFILL SHALL BE 70% SOIL FROM PLANTING PIT AND 30% ORGANIC MATERIAL, PREFERABLY CANADIAN PEAT MOSS.

2-2 9-0/ED-1 0 DECIDUOUS TREE PLANTING DETAIL

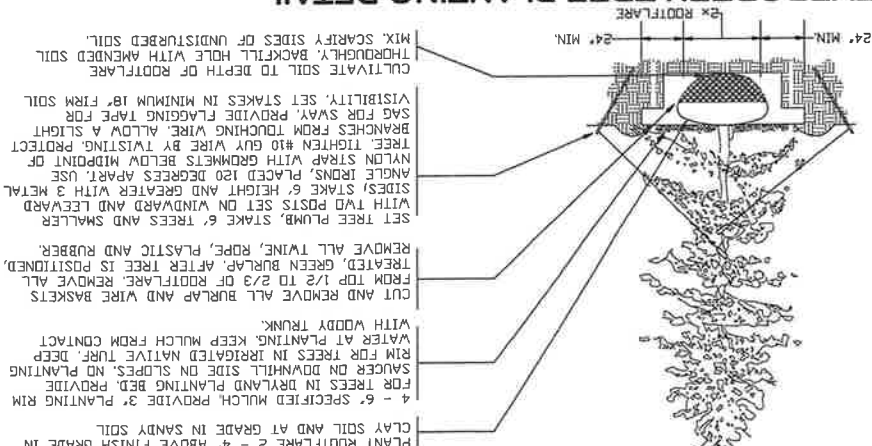


NOTES:
 * DO NOT REMOVE OR CUT LEADER.
 * PRUNE ONLY DEAD OR BROKEN BRANCHES IMMEDIATELY PRIOR TO PLANTING.
 * REMOVE ANY DOUBLE LEADERS, UNLESS OTHERWISE DIRECTED BY OWNER'S REPRESENTATIVE.
 * KEEP PLANTS MOIST AND SHADED UNTIL PLANTING.
 * AMENDED BACKFILL SHALL BE 90% SOIL FROM PLANTING PIT AND 10% ORGANIC MATERIAL, PREFERABLY CANADIAN PEAT MOSS.
 * STAKING POST SHALL BE 1 1/2" DIA. TREATED WOOD STAKE. METAL POST WILL NOT BE APPROVED.

GENERAL LANDSCAPE NOTES

- PRE-CONSTRUCTION MEETING WITH LANDSCAPE ARCHITECT OF RECORD PRIOR TO THE COMMENCEMENT OF LANDSCAPE RELATED CONSTRUCTION.
- PLANT QUANTITY AND SUBSTITUTION: IN CASE OF DISCREPANCY IN PLANT QUANTITIES SHOWN ON THE PLANT TABLE AND THOSE SHOWN ON THE PLANNING PLAN, THE QUANTITIES SHOWN ON THE PLANNING PLAN SHALL GOVERN. THE MINIMUM ACCEPTABLE SIZES OF PLANTS MEASURED BEFORE PRUNING WITH BRANCHES IN NORMAL POSITION SHALL CONFORM TO THE PLANTING SIZES AS SPECIFIED IN THE PLANTING TABLE. ANY SUBSTITUTION OF PLANT SIZE OR SPECIES MUST BE SUBMITTED TO THE LANDSCAPE ARCHITECT IN WRITING FOR APPROVAL PRIOR TO INSTALLATION.
- ACCEPTABLE PLANT MATERIAL: ALL PLANTS SHALL MEET OR EXCEED STANDARDS SET BY THE "COLORADO NURSERY ASSOCIATION," AND THE "AMERICAN STANDARD OF NURSERY STOCK." ALL PLANTS SHALL BE TYPICAL OF THEIR SPECIES, HEALTHY, FREE OF DISEASE, INSECT PESTS, MECHANICAL INJURIES, AND HAVE ADEQUATE ROOT SYSTEMS. TREES SHALL BE FULLY BRANCHED IN PROPORTION TO WIDTH AND HEIGHT AND HAVE A RELATIVELY STRAIGHT TRUNK WITH A CENTRAL LEADER. THE CONTRACTOR SHALL PRUNE LOWER BRANCHES OF DECIDUOUS TREES TO 6 FEET ABOVE FINISH GRADE. ALL TREES, SHRUBS, AND GROUND COVERS SHALL BE INSTALLED PER PLANTING DETAILS. MATERIAL SHALL BE INSPECTED BY THE LANDSCAPE ARCHITECT OR OWNER PRIOR TO INSTALLATION.
- SITE DISTURBANCE: ALL AREAS OF SITE DISTURBANCE DUE TO CONSTRUCTION SHALL BE RENOVATED OR PLANTED PER THIS PLAN UNLESS OTHERWISE NOTED.
- SOIL AMENDMENTS: CONTRACTOR SHALL AMENDED PLANTING AREAS AS FOLLOWS:
 ADD MINIMUM OF 4 CUBIC YARDS OF WELL-COMPOSTED AGED MANURE OR PREMIUM COMPOST PER 1000 S.F.
 ALL AMENDED AREAS SHALL BE FILLED TO A DEPTH OF 6" PRIOR TO PLANTING.
- SEEDED TURF: ALL SEEDED OR HYDROMULCHED AREAS SHALL DEMONSTRATE 95% GERMINATION PRIOR TO FINAL ACCEPTANCE.
- IRRIGATION: ALL TREES, SHRUBS, AND GROUND COVERS SHALL BE IRRIGATED BY AN AUTOMATIC DRIP OR SPRAY IRRIGATION SYSTEM EQUIPPED WITH A RAIN SENSOR SHUTOFF DEVICE. ALL TURF AREAS TO BE IRRIGATED BY UNDERGROUND, AUTOMATIC IRRIGATION SYSTEM ALSO EQUIPPED WITH A RAIN SENSOR AUTOMATIC SHUTOFF DEVICE.
- ORGANIC MULCH: ALL PLANTING AREAS FOR TREES, SHRUBS, GROUNDCOVERS AND ORNAMENTAL GRASSES SHALL BE MULCHED WITH A (3") DEPTH, A 3/4" DIA. WOVEN NEEDLE PUNCHED POLYPROPYLENE (DEWITT OR EQUIVALENT), OVERLAP ENDS 3", TURN DOWN EDGES 6".
- INORGANIC MULCH: THE TYPE OF INORGANIC MULCH AS SPECIFIED WITHIN THE KEYED NOTES ON THE LANDSCAPE PLAN SHALL BE APPLIED AT A STANDARD DEPTH OF 3"-4" OVER GEO-TEXTILE FILTER FABRIC. FILTER FABRIC SHALL BE MIN. 4 OZ. WOVEN NEEDLE PUNCHED POLYPROPYLENE (DEWITT OR EQUIVALENT), OVERLAP ENDS 3", TURN DOWN EDGES 6".
- INSPECTION AND APPROVAL: NOTIFICATION FOR IRRIGATION INSPECTION AFFIDAVIT SHALL BE GIVEN DURING CONSTRUCTION WHILE TRENCH IS OPEN AND AFTER COMPLETION OF SYSTEM INSTALLATION. PRIOR TO CLIENT SEEKING CERTIFICATE OF OCCUPANCY FOR FINAL LANDSCAPE INSPECTION AFFIDAVIT.
- ANY FIELD CHANGES OR DEVIATIONS TO THESE PLANS WITHOUT PRIOR APPROVAL OF AN AMENDED DEVELOPMENT PLAN MAY RESULT IN A DELAY OF FINAL APPROVAL AND THE ISSUANCE OF A CERTIFICATE OF OCCUPANCY.
- FOR RELOCATION OR REMOVAL OF EXISTING TREES, A LICENSED TREE SERVICE MUST BE USED.
- FINAL TREE AND SHRUB LOCATIONS: ALL TREE LOCATIONS SHALL BE STAKED FOR APPROVAL BY OWNERS REPRESENTATIVE PRIOR TO PLANTING. SHRUBS SHALL BE PLACED IN THEIR LOCATIONS PER THIS PLAN AND APPROVED BY OWNER REPRESENTATIVE. THE FINAL LOCATION OF TREES TO BE PLANTED MAY REQUIRE ADJUSTMENT BASED ON APPROVAL OF THE FINAL UTILITIES PLANS AND ASSOCIATED FINAL PLAT AND EASEMENTS.

2-2 9-0/ED-2 0 EVERGREEN TREE PLANTING DETAIL



NOTES:
 * PRUNE ONLY DEAD OR BROKEN BRANCHES IMMEDIATELY PRIOR TO PLANTING.
 * REMOVE ANY DOUBLE LEADERS, UNLESS OTHERWISE DIRECTED BY OWNER'S REPRESENTATIVE.
 * KEEP PLANTS MOIST AND SHADED UNTIL PLANTING.
 * AMENDED BACKFILL SHALL BE 70% SOIL FROM PLANTING PIT AND 30% ORGANIC MATERIAL, PREFERABLY CANADIAN PEAT MOSS.

CATHEDRAL ROCK CHURCH
 STETSON HILLS BLVD.
 PRELIMINARY LANDSCAPE DETAILS
 PHASE ONE

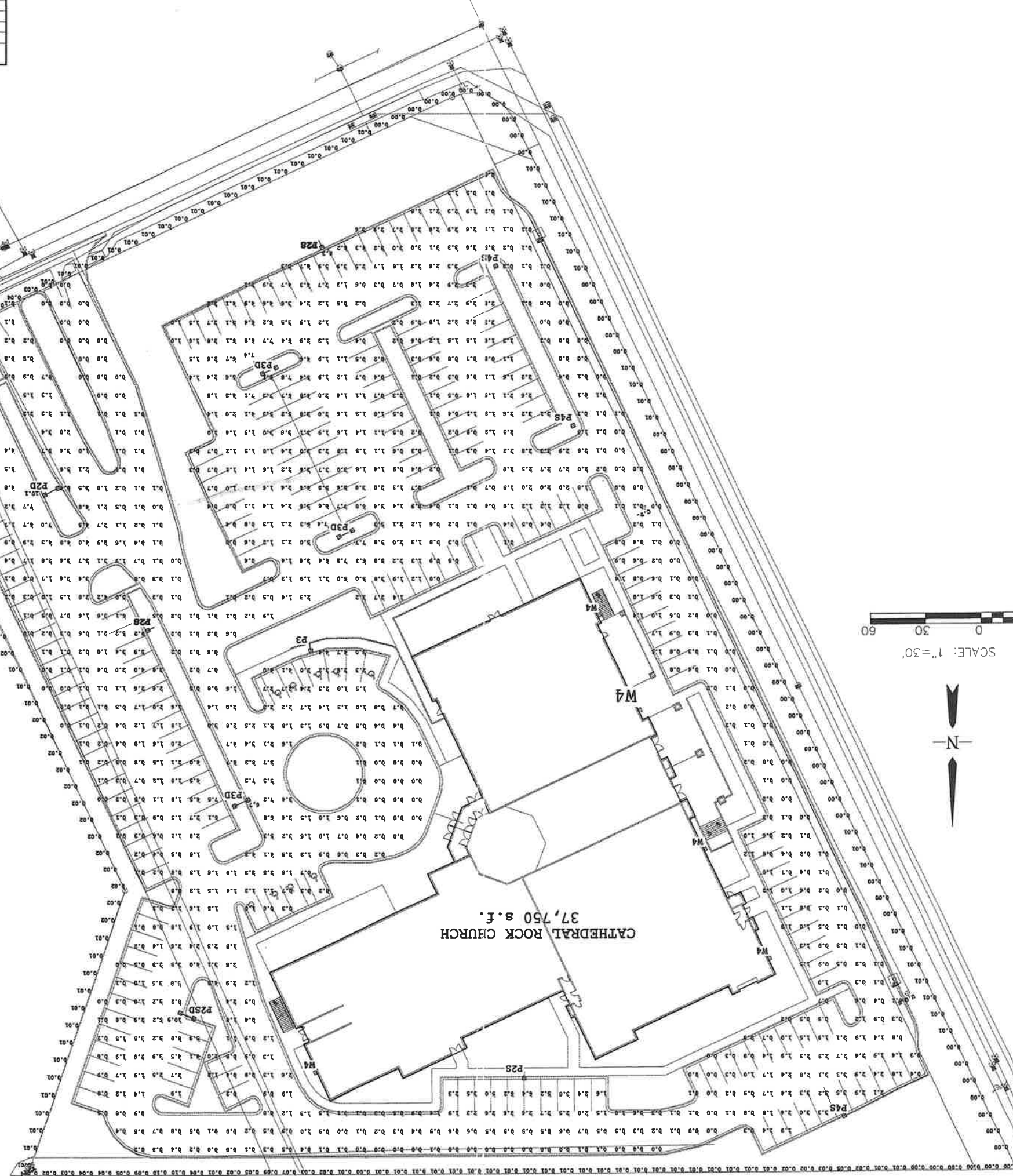
REVISIONS

NO.	DESCRIPTION	DATE
1	PHASE ONE LANDSCAPE	01-28-16
2	County Comment	04-15-16

NINE DESIGN LTD.
 Landscape Architects & Planners
 Colorado Springs, Colorado
 719.528.7037
 nineesign@aig.com
 www.ninedesign-cs.com

CALL BEFORE YOU DIG ...
811
 48 HOURS BEFORE YOU DIG, CALL UTILITY LOCATORS FOR LOCATING AND MARKING GAS, ELECTRIC, WATER AND TELEPHONE





LED DESIGN

Label	Qty	Symbol
R2D	1	□
R2S	3	□
R3D	3	□
R3S	3	□
R4D	1	□
R4S	5	□
R4S	3	□
R2SD	1	□

Label	Description	Qty	Footcandle
R2D	RCE-2-1601A-481A-NM	1	0.900
R2S	RCE-2-1601A-481A-NM-IS	3	0.900
R3D	RCE-3-1601A-481A-NM	3	0.900
R3S	RCE-3-1601A-481A-NM-IS	3	0.900
R4D	RCE-4-1601A-481A-NM	1	0.900
R4S	RCE-4-1601A-481A-NM-IS	3	0.900
R2SD	RCE-2-1601A-481A-NM-IS	1	0.900

Calculation Summary	Category	Units	Avg	Max	Min	Avg/Min	Max/Min
Property Line	ILLUMINANCE	fc	0.01	0.10	0.00	N.A.	N.A.
Site	ILLUMINANCE	fc	1.59	10.9	0.0	N.A.	N.A.

NO.	DESCRIPTION	DATE

REVISIONS:

ENGINEER:	DESIGNED BY:	DATE:

DRAWN BY:	DATE:

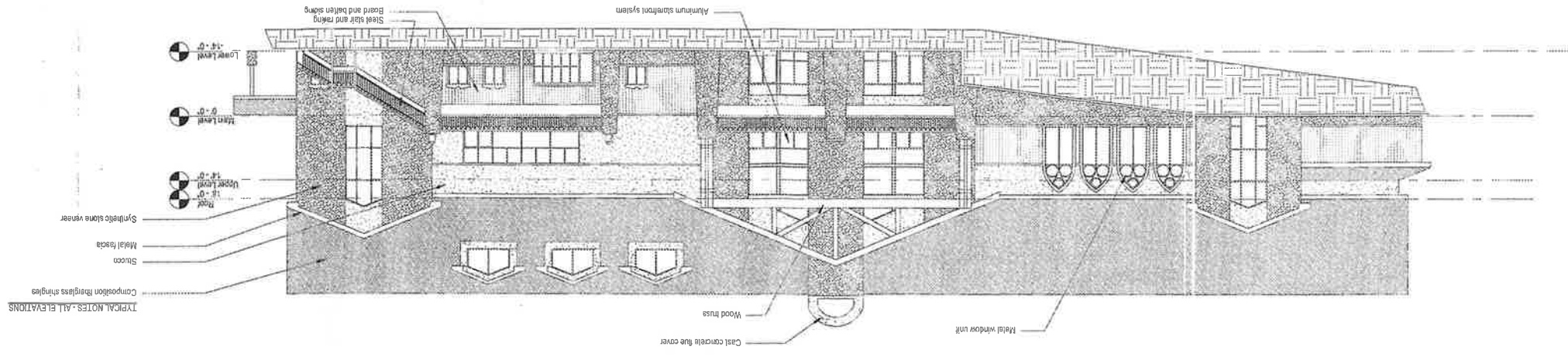
CHECKED BY:	DATE:

48 HOURS BEFORE YOU DIG.
CALL UTILITY LOCATORS

PROJECT: CATHEDRAL ROCK CHURCH
SHEET TITLE: PHOTOMETRIC LED LAYOUT

SE Spriggs Engineering
31 N. TEJON, SUITE 500
COLORADO SPRINGS, CO 80903
P: (719) 227-7398
F: (719) 227-7392

1 West Elevation
1/16" = 1'-0"



Cast concrete base cover
Wood truss
Metal window unit
Composition fiberglass shingles
Stucco
Metal fascia
Synthetic stone veneer

Typical Notes - All Elevations

2 South Elevation
1/16" = 1'-0"



High Roof 24'-0"
Roof 18'-0"
Upper Level 14'-0"
Main Level 0'-0"
Cover Level -12'-0"

Issue Date: May 14, 2015

Revisions:
Apr 9, 2015 progress - Client review
May 14, 2015 Permitting submittal

PROJECT NO:
Project Number:

Project Status:

EXTERIOR ELEVATIONS

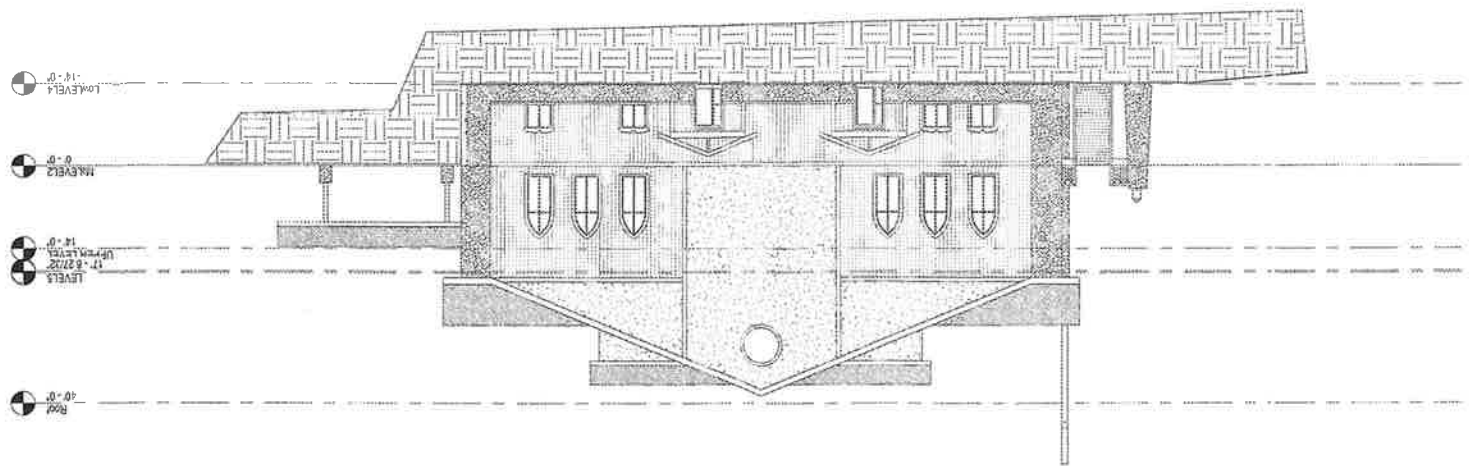
Cathedral Rock Church

Colorado Springs, Colorado

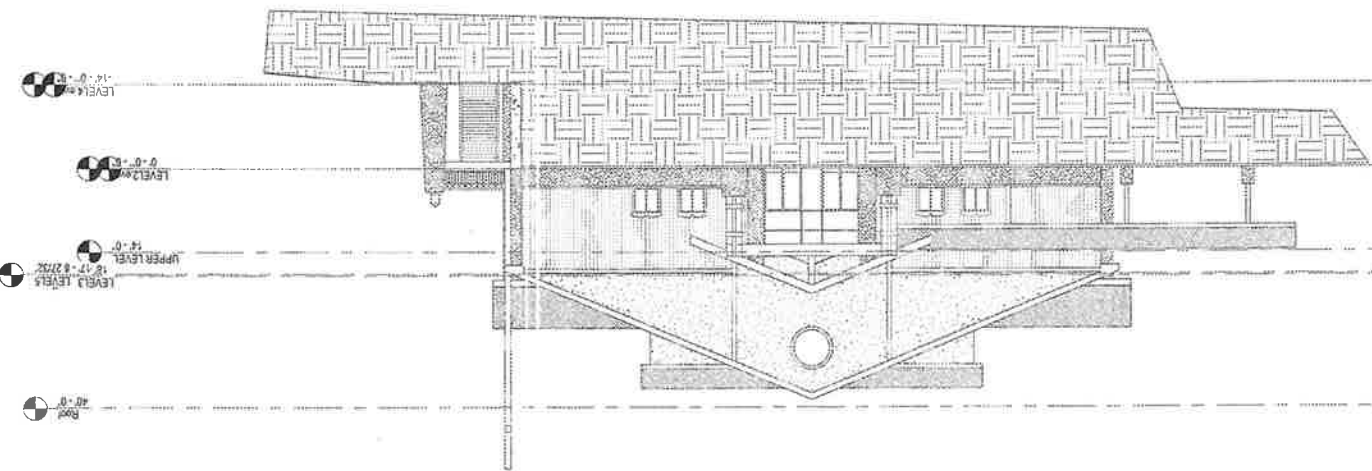


Patrick Morgan Architect, Inc.
(719) 534-0489
(719) 531-8248 fax
5295 Copper Drive
Colorado Springs, Colorado 80918

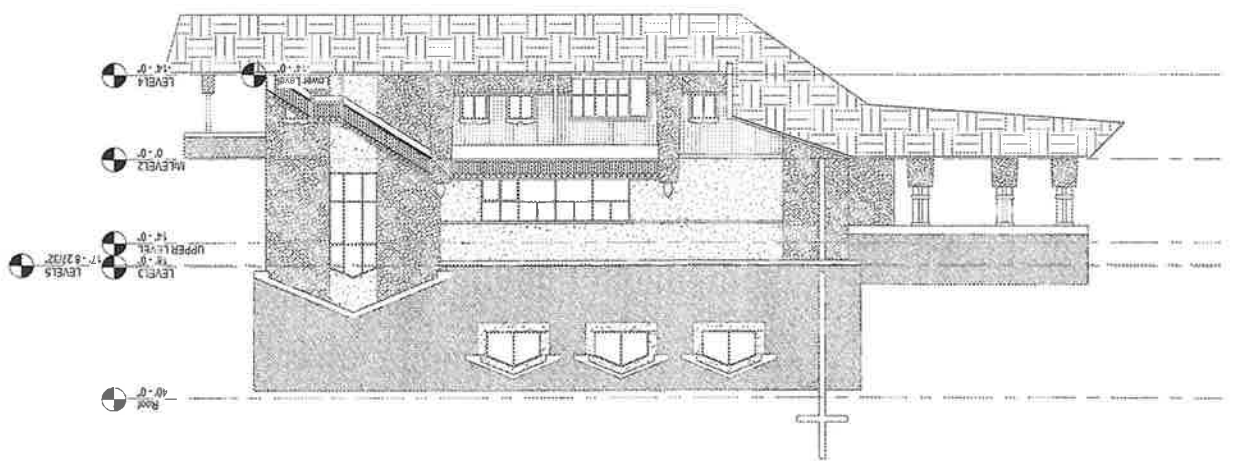
① South
1/16" = 1'-0"



③ North
1/16" = 1'-0"



② West
1/16" = 1'-0"



Phase 1 Exterior Elevations

PROJECT STATUS
PROJECT NO.
PROJECT NUMBER
Issue Date: May 14, 2015
Revisions: May 14, 2015 Planning submittal

Cathedral Rock Church

Colorado Springs, Colorado



Patrick Morgan Architect, Inc.
(719) 534-0433
(719) 531-5245 fax
5295 Copper Drive
Colorado Springs, Colorado 80918