

LILLYWOOD SHOW STABLES RIDING ACADEMY

A PORTION OF THE SOUTHWEST QUARTER OF SECTION 15, TOWNSHIP 11 SOUTH,
 RANGE 65 WEST OF THE 6TH P.M., EL PASO COUNTY, COLORADO
 EL PASO COUNTY, COLORADO
ELEVATION PLAN



N.E.S. Inc.
 619 N. Cascade Avenue, Suite 200
 Colorado Springs, CO 80903

Tel. 719.471.0073
 Fax 719.471.0267

www.nescolorado.com

© 2012. All Rights Reserved.

PLANNER / LANDSCAPE ARCHITECT

BY ASSOCIATION WITH

PROJECT INFO

DATE: 3/14/24
 PROJECT MGR: E. TROLLER
 PREPARED BY: A. ROMAN

STAMP

ISSUE INFO

DATE:	BY:	DESCRIPTION:

ISSUE / REVISION

SHEET TITLE

SHEET NUMBER

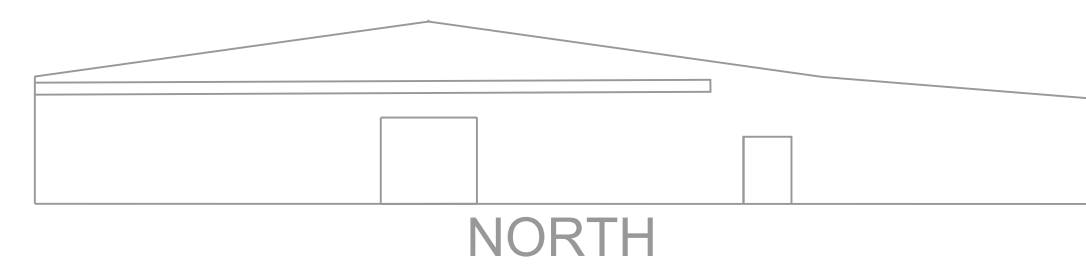
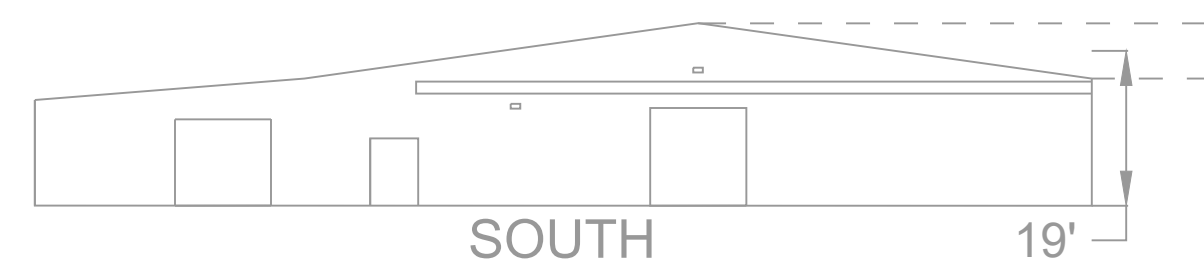
PLAN FILE #

LILLYWOOD SHOW STABLES RIDING ACADEMY

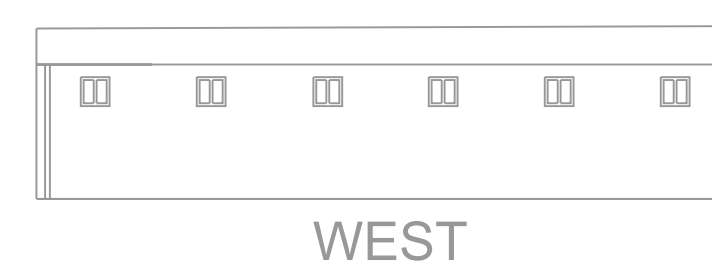
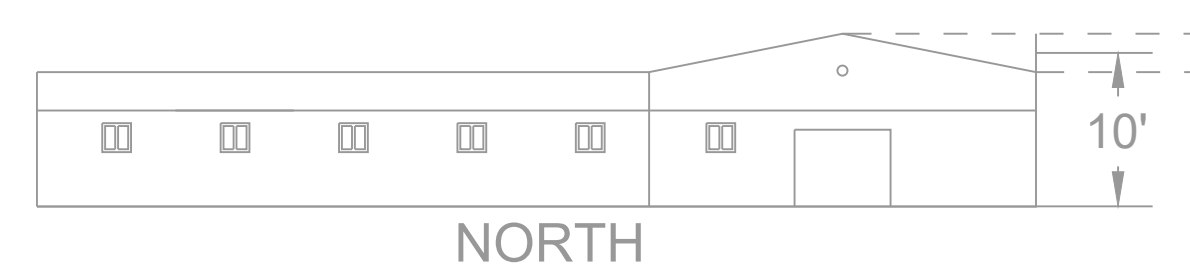
SITE DEVELOPMENT PLAN

9210 MORGAN RD
 COLORADO SPRINGS
 CO, 80908

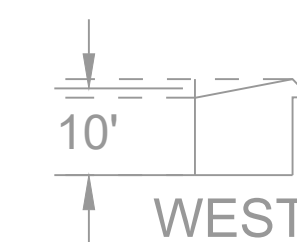
ELEVATION PLAN



Riding School and Stables Elevation, not to scale



Stables Elevation, not to scale



Loafing Shed Typical Elevation, not to scale

File Number: PPR248