

LILLYWOOD SHOW STABLES RIDING ACADEMY

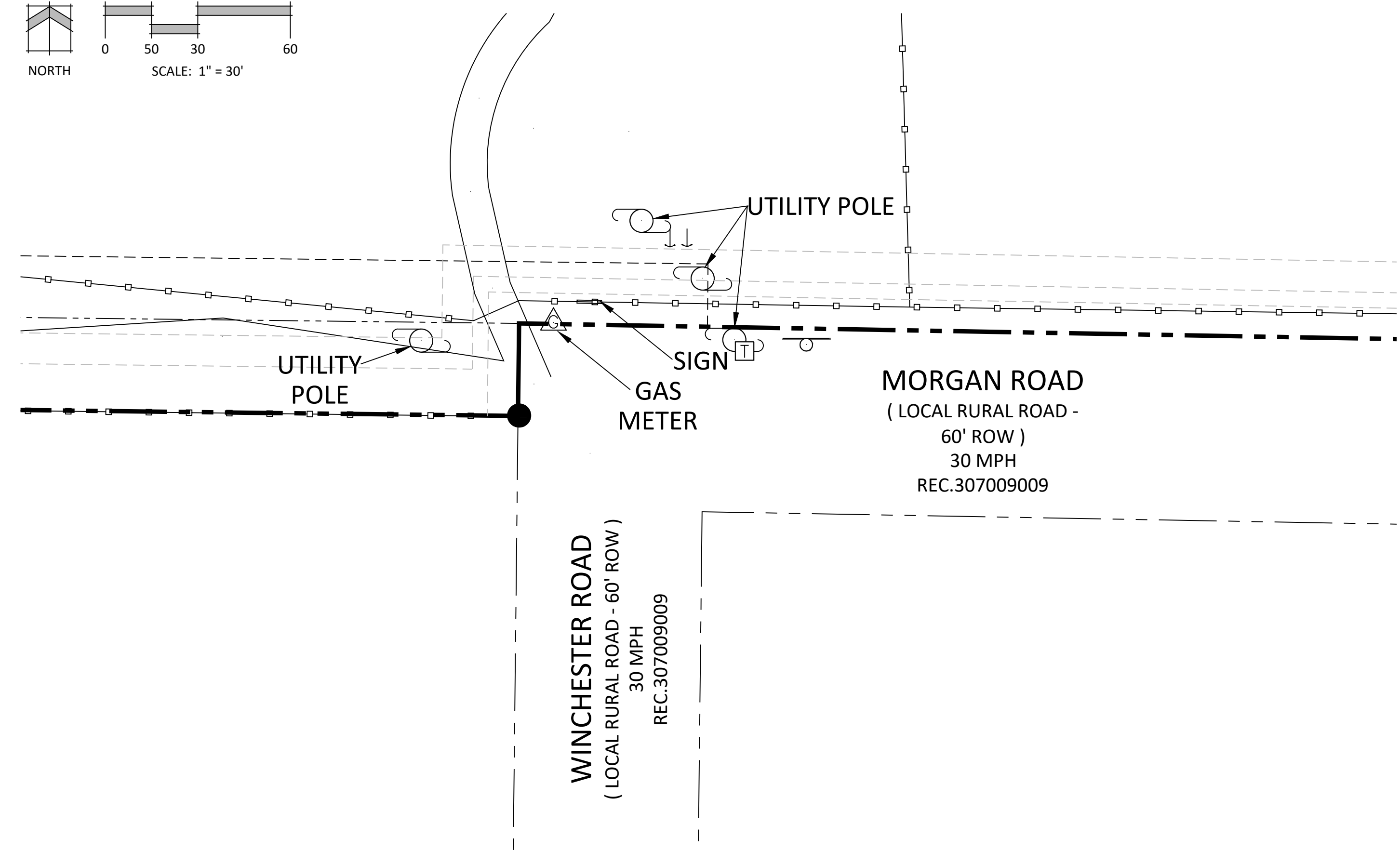
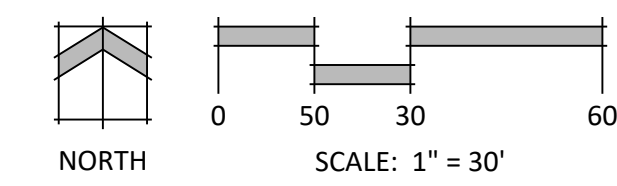
A PORTION OF THE SOUTHWEST QUARTER OF SECTION 15, TOWNSHIP 11 SOUTH,
RANGE 65 WEST OF THE 6TH P.M., EL PASO COUNTY, COLORADO
EL PASO COUNTY, COLORADO

SIGN PLAN



Note: Sign is not illuminated.

CONTEXT MAP



N.E.S. Inc.
619 N. Cascade Avenue, Suite 200
Colorado Springs, CO 80903

Tel. 719.471.0073
Fax 719.471.0267

www.nescolorado.com

© 2012. All Rights Reserved.

LILLYWOOD SHOW STABLES RIDING ACADEMY

SITE DEVELOPMENT PLAN

9210 MORGAN RD
COLORADO SPRINGS
CO, 80908

DATE: 3/14/24
PROJECT MGR: E. TROLLER
PREPARED BY: A. ROMAN

SIGN PLAN