

# LILLYWOOD SHOW STABLES RIDING ACADEMY

A PORTION OF THE SOUTHWEST QUARTER OF SECTION 15, TOWNSHIP 11 SOUTH,  
RANGE 65 WEST OF THE 6TH P.M., EL PASO COUNTY, COLORADO  
EL PASO COUNTY, COLORADO

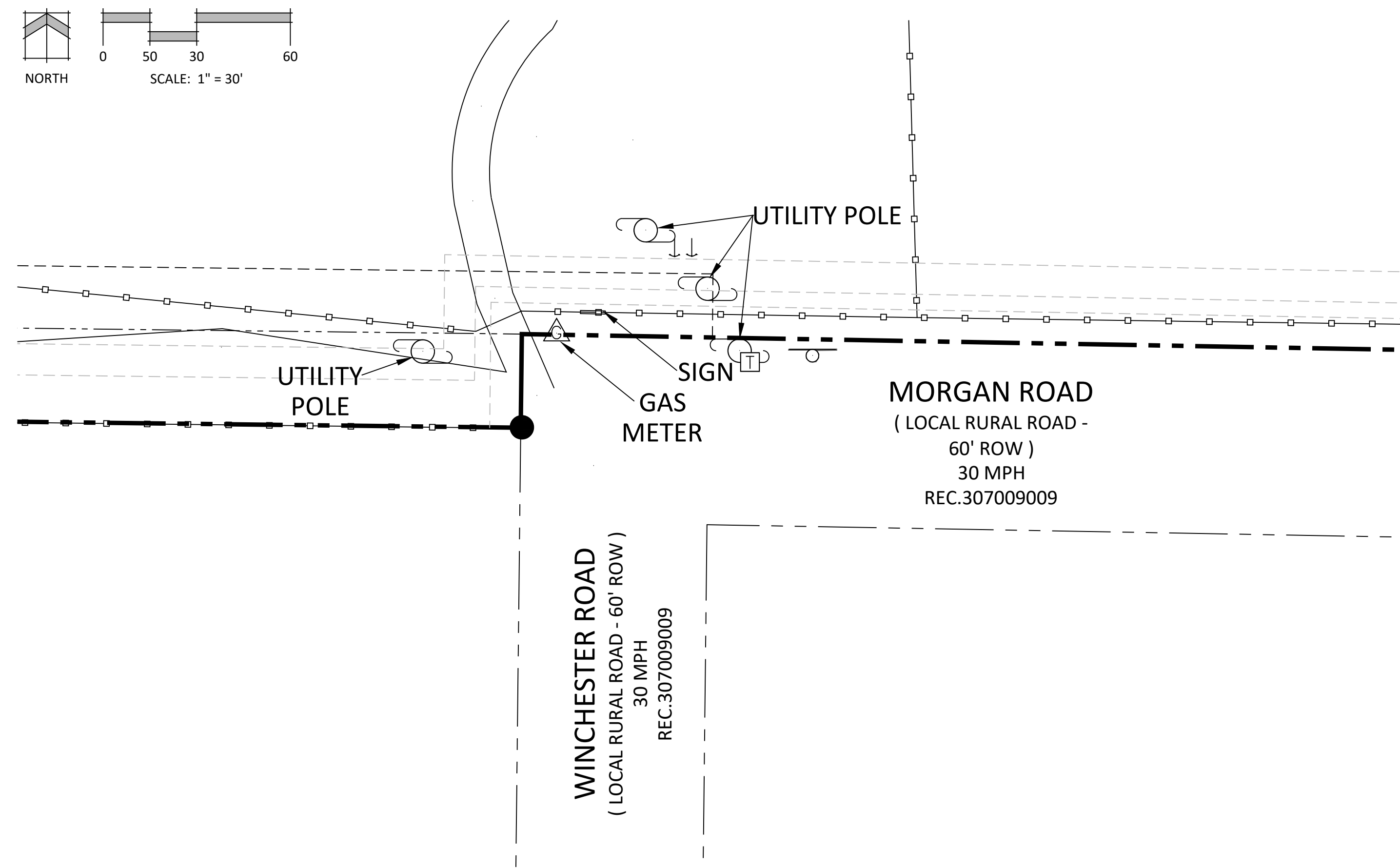
## SIGN PLAN



Note: Sign is not illuminated.

Please include:  
 -setback distance to property lines  
 -zoning  
 -parcel number  
 -sign elevation and detail  
 -summary of sq footage allowed vs what is at the property  
 -sight triangles near sign (if applicable)

### CONTEXT MAP



P:\Matt\_Barnett\Lillywood Riding Academy\Drawings\Planning\PPR\Lillywood Riding Academy\_SDP.dwg [STEREO] 3/17/2024 5:15:42 PM ARDMAN



N.E.S. Inc.  
619 N. Cascade Avenue, Suite 200  
Colorado Springs, CO 80903

Tel. 719.471.0073  
Fax 719.471.0267

www.nescolorado.com

© 2012. All Rights Reserved.

PLANNER / LANDSCAPE ARCHITECT

IN ASSOCIATION WITH:

## LILLYWOOD SHOW STABLES RIDING ACADEMY

### SITE DEVELOPMENT PLAN

9210 MORGAN RD  
COLORADO SPRINGS  
CO, 80908

PROJECT INFO

DATE: 3/14/24  
PROJECT MGR: E. TROLLER  
PREPARED BY: A. ROMAN

STAMP

ISSUE INFO

DATE:	BY:	DESCRIPTION:

ISSUE / REVISION

SHEET TITLE

SHEET NUMBER

PLAN FILE #

### SIGN PLAN

File Number:  
PPR248