



8/31/2021

SIGN COMPANY LLC.



PROJECT

Arby's Store #TBD
11775 Meridian Market View
Falcon, CO 80831

MANUFACTURING

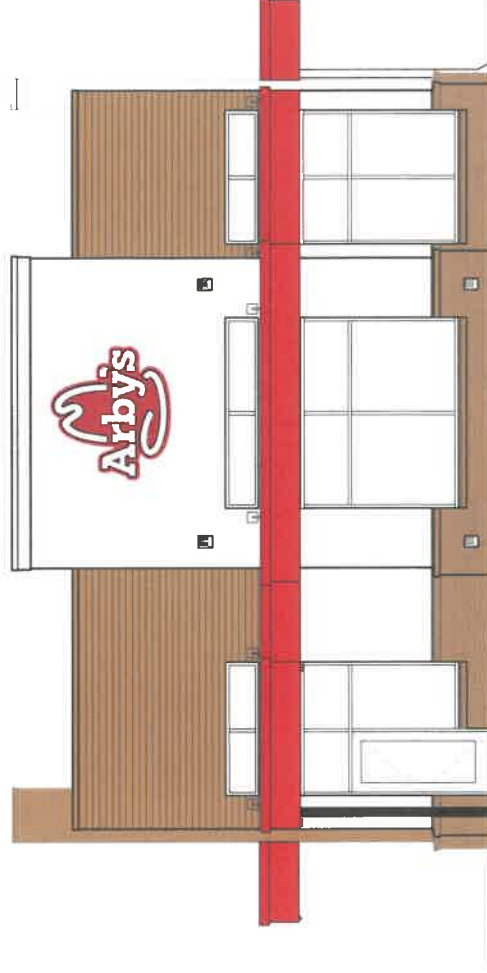
Design Team Sign Co.
255 Old Morris Chapel Rd.
Adamsville, TN

SALES/PROJECT MANAGEMENT

Heather B Picou - Account Manager
Email: hpicou@designteam.net
Office: 850-733-9812 / Cell: 865-274-9904
Brandy Britt - Project Manager
Email: bbritt@designteam.net
Design Team Office: (731) 925-4448

CLIENT

Flynn Restaurant Group
Joe Fouse - Procurement Manager, FF&E
6200 oak Tree Blvd.
Independence, OH 44131
Office: 216-525-0319
Email: jfouse@flynnrg.com





8/31/2021



SIGN COMPANY LLC.

Project:

Arbys Store #TBD
11775 Meridian Market View
Falcon, CO 80831

Manufacture & Installation Items:

- A- (1) B6 Pylon w/ Match Plate. (2) 40" x 72.25" New Watchfire Full Color EMB. Paint structure Gloss Black.
Pylon To Be 24' OAH.
- B- (2) 72" x 79.375" LED Illuminated Hat Logo Sign- (2) Wall Mount
- C- (2) 16.25" White LED Illuminated Channel Lettersets- (1) Wall Mount (1) Canopy Mount
- C2- (1) 31.625" Red LED Illuminated Channel Lettersets- (1) Wall Mount
- D- (2) 15"x 37" Double Sided Directionals. (1) Enter w/Logo Left, (1) Enter w/Logo Right,
(1) Exit w/Logo Left, & (1) Exit w/Logo Right
- E- (35 LF) 24" Tall x 10.375" Deep Red Non-Illuminated Eyebrow Canopy
- F- (1) 24" x 72" x 48" Drive-Thru Canopy w/LED Lamp, Turnbuckles, and Scuppers
- F2- (1) 24" x 128" x 48" Entrance Canopy w/LED Lamp, Turnbuckles, and Gutter Downspout
- F3- (1) 24" x 100" x 54" 3 Post Canopy w/LED Lamp, Turnbuckles, Poles, And Scuppers
- G- (1) Break Away Canopy- Anchor Bolts/Footing By GC
- H- (1) 42" Interior Carousel "A" - Interior Wall Mount
- CODES

Questions: Call Heather at (865) 274-9904 or email Heather at hpickou@designteam.net



**SIGN PERMIT AUTHORIZATION
OWNER / LANDLORD AUTHORIZATION**

Comes now Patrick J. Eulberg, Vice President - Real Estate,
(Property Owner or Landlord)


Who being duly sworn upon his/her oath, does state that he/she is the

Property Owner or Landlord that has given permission to the applicant,

(Design Team Sign Company and their sub-contractors) to place signage at

Arby's 11775 Meridian Market View, Falcon, CO.

Dated this 19th day of May, 2021


Pat Eulberg (Arby's, 2021114:11 EDT)
(Signature of Property Owner or Landlord)

Patrick J. Eulberg
(Printed Name)

6200 Oak Tree Blvd., Suite 250, Independence, OH 44131
(Address, City, State, Zip)

216-525-2775; frgrealestate@gmail.com
(Phone, Fax)

RBA - Falcon - Design LOA - 5-19-2021

Final Audit Report

2021-05-19

Created:	2021-05-19
By:	Denise Patterson (dpatterson@flynnrg.com)
Status:	Signed
Transaction ID:	CBJCHBCAABAAUngXmB2N3Y1lvCjwGGqWeHythj0RHB8C

"RBA - Falcon - Design LOA - 5-19-2021" History



Document created by Denise Patterson (dpatterson@flynnrg.com)

2021-05-19 - 6:17:41 PM GMT- IP address: 76.189.151.16



Document emailed to Pat Eulberg (peulberg@flynnrg.com) for signature

2021-05-19 - 6:18:11 PM GMT



Email viewed by Pat Eulberg (peulberg@flynnrg.com)

2021-05-19 - 6:20:46 PM GMT- IP address: 174.196.134.248



Document e-signed by Pat Eulberg (peulberg@flynnrg.com)

Signature Date: 2021-05-19 - 6:21:03 PM GMT - Time Source: server- IP address: 174.196.134.248

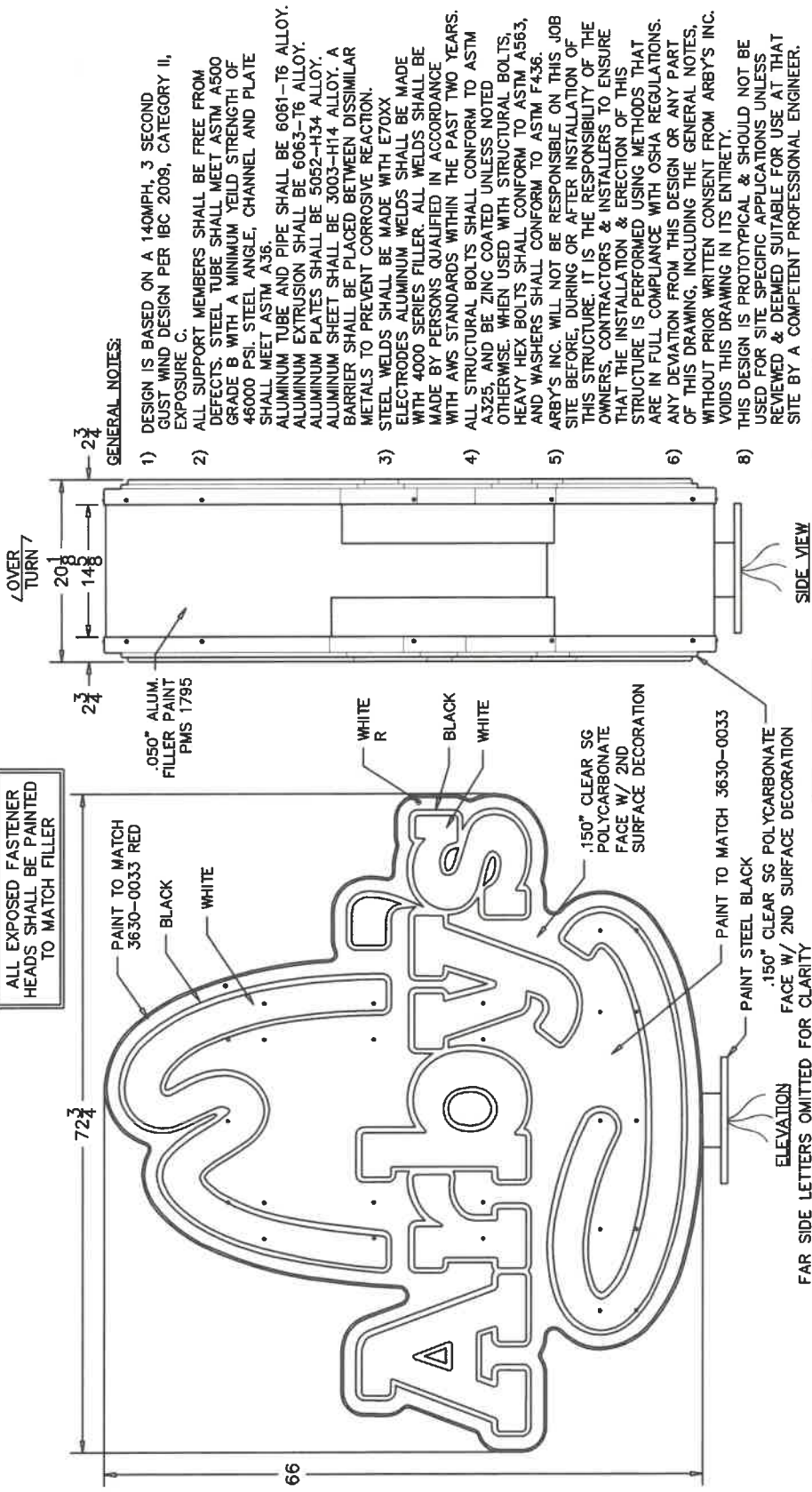


Agreement completed.

2021-05-19 - 6:21:03 PM GMT



Adobe Sign



GRAPHICS DEPICTED ON THIS DRAWING ARE FOR ILLUSTRATIVE PURPOSES ONLY. DO NOT USE THIS DRAWING FOR PRODUCTION ART, REFER TO PRODUCTION ELECTRONIC FILES

APPROVAL INFORMATION & CONFIRMATION

☐ Proof is approved. Proceed with production of order.

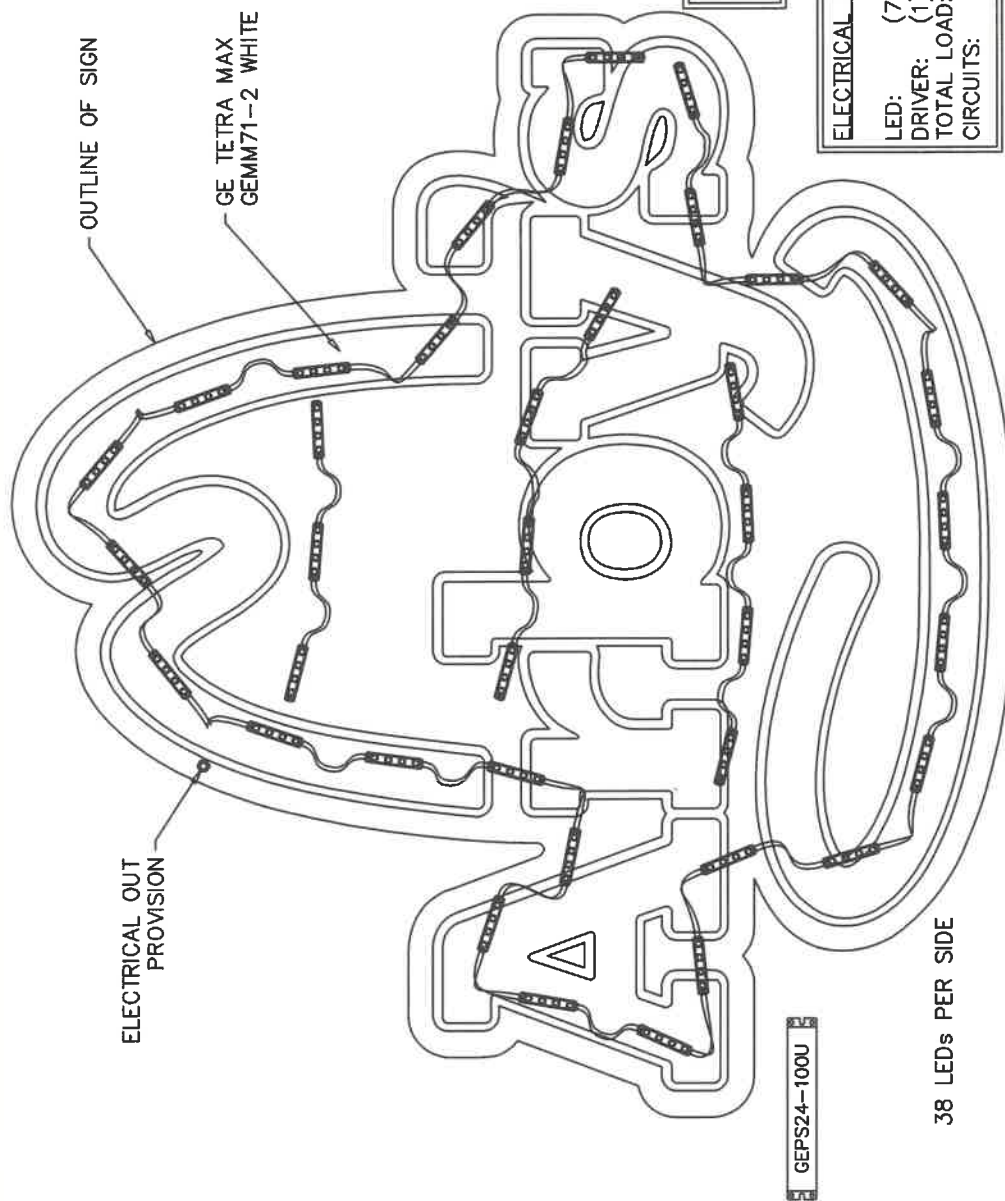
☐ Proof is approved with corrections. Make corrections as indicated and proceed with production of order.

SIGNATURE _____ PRINT NAME _____ DATE _____

I have reviewed this proof in regard to: Sign type, letter quantity, and accuracy at layout, position, and font (size, spacing, capitalization, punctuation).

These plans are the exclusive property of Design Team Sign. They are submitted to your company for the sole purpose of obtaining a permit. Design Team Sign Company is not responsible for the use of these plans in any other manner. If you are not the owner of the rights to the product manufactured according to these plans, Distribution or reproduction of these plans without the written consent of Design Team Sign Company is prohibited. If you are not the owner of the rights to the product manufactured according to these plans, Distribution or reproduction of these plans without the written consent of Design Team Sign Company is prohibited. In the event of any unauthorized use, Design Team Sign Company reserves the right to pursue legal action. Design Team Sign Company reserves the right to be reimbursed \$200 in compensation for time and effort entailed in creating these plans.

Client: ARBY'S Location: Date: 1/21/20 Drawn By: MFB Sheet: 1 of 1 Approved By: Scale: File: FilesystemReal/Arbys/CP



LED LAYOUT

APPROVAL INFORMATION & CONFIRMATION

Proof is approved. Proceed with production of order. Proof is approved with corrections. Make corrections as indicated and proceed with production of order.

SIGNATURE _____ PRINT NAME _____ DATE _____

SIGNALURE
I have reviewed this proof in regard to: Sign type, order, quantity, and accuracy of tone, symbol, and text (e.g., spelling capitalization, punctuation).



These plans are the exclusive property of Design Team Sign Company and are the result of the original work of its employees. They are lent to your company for its sole purpose of your consideration of whether to purchase the plans or to purchase from Design Team Sign Company a product manufactured according to these plans. Distribution or violation of the plans to anyone other than employees of your company, or use of these plans to construct a product similar to one embodied herein, is expressly forbidden. In the event that a violation of these terms of Design Team Sign Company's license occurs, the license shall be terminated and \$500 in damages shall be paid to Design Team Sign Company. The license shall be voided in the event these terms of the license are not accepted in writing by the licensee.

Client: ARBY'S
Location:
Drawn By: MEB Date: 1/21/20
Approved By:
Sheet: Scale:
File: Files\env\Real\Arby's\CP

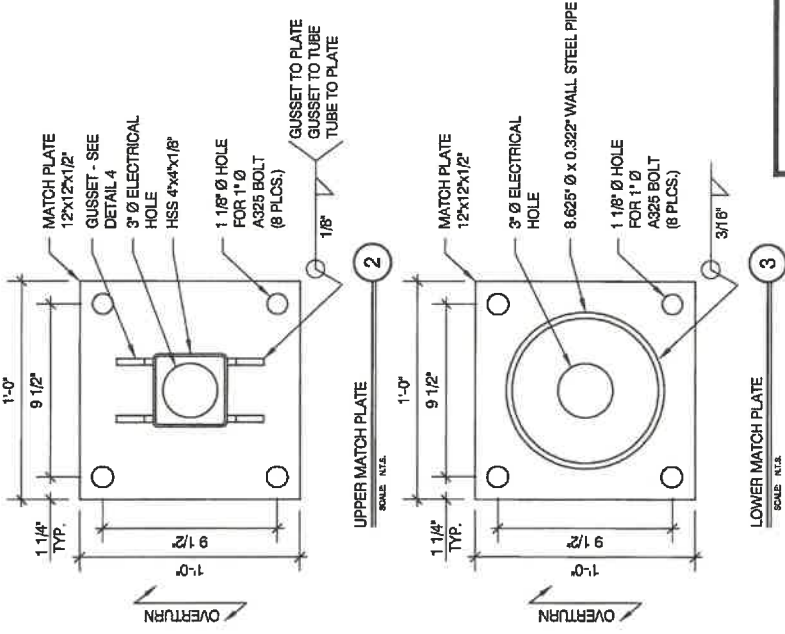
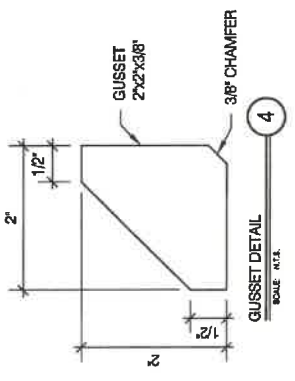
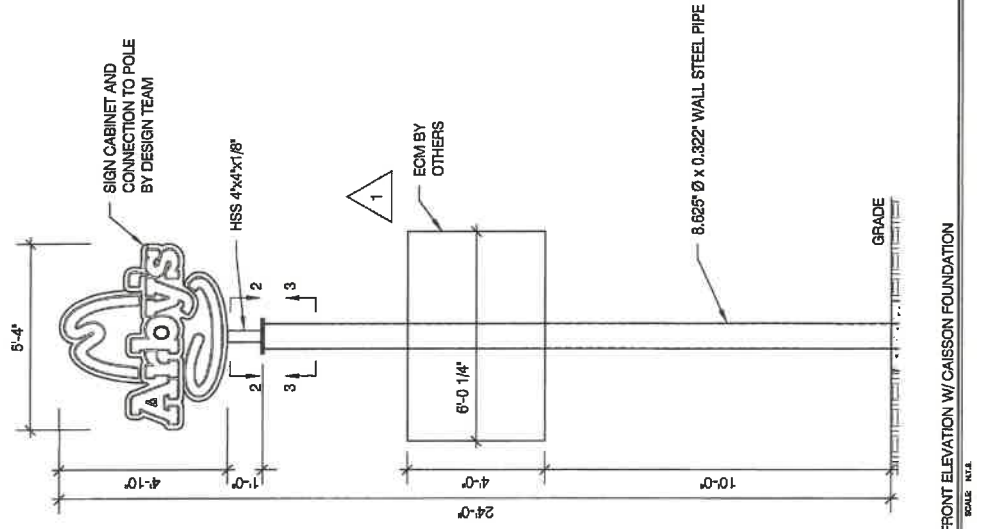


SIGN COMPANY LLC.

731-925-4448 • 800-953-3744 • Fax 731-926-2022
www.dsignaem.net

NOTES
 1.) SEE MANUFACTURERS DRAWINGS FOR
 ADDITIONAL DETAILS AND DIMENSIONS.
 2.) SIGN CABINET AND CONNECTION
 BY DESIGN TEAM.

* CLIENT - DESIGN TEAM
 * 2018 IBC
 * RISK CATEGORY II
 * 115 MPH WIND SPEED, EXP. C



PROJECT:	11775 Meridian Market View, Falcon, CO 80831			
	DRAWING TITLE:			
CLIENT:	ARBY'S			
	1			
DRAWING NO.	DWG.			
	1			
DATE:	06/09/21			
	DATE			
CHECKED BY:	FCM			
	DATE			
DRAWN BY:	DEW			
	DATE			
COMM. NO.	210537.028			
	DATE			
REV #	060721			
	DATE			
REV #	JRM			
	DATE			

MBI

MEL COMPANIES INC.
 299 N. WEISGARBER RD.
 KNOXVILLE, TN 37919
 PHONE 865.584.0959
 SIGN-ENGINEER.COM

REFER TO SIGN COMPANY'S DRAWINGS FOR MORE DETAILS.
ALL DESIGNS, DETAILING FABRICATION AND CONSTRUCTION SHALL
CONFORM TO:

2018 IBC

ACI

AISC

LOCAL BUILDING CODES & ORDINANCES

CONCRETE: 2500 PSI @ 28 DAYS

STD. STEEL PIPE SECTION: ASTM A53 GRADE B (FY=35 KSI), U.N.O.

HSS ROUND SECTION: (> 20") ASTM A252 GRADE 3 (FY=42 KSI MIN), U.N.O.

HSS SQUARE/RECTANGULAR SECTION: ASTM A500 GRADE B (FY=48 KSI)

W SHAPES: ASTM A992 (FY = 50 KSI)

ANCHOR BOLTS: ASTM F1554 GRADE 36 U.N.O. (ALTERNATES GRADE 55 & 105)

CONNECTION BOLTS: ASTM A193 GRADE B7

STEEL ANGLES, CHANNELS, STRUCTURAL SHAPES & PLATES ASTM A36

REINFORCING: GRADE 60 ASTM A615

PROVIDE A MINIMUM OF THREE INCHES OF CONCRETE COVER OVER

EMBEDDED STEEL.

THE CONTRACTOR (INSTALLER) IS RESPONSIBLE FOR THE MEANS &

METHODS OF CONSTRUCTION IN REGARDS TO JOBSITE SAFETY.

NO FIELD HEATING FOR BENDING OR CUTTING OF STEEL SHALL BE

ALLOWED WITHOUT THE ENGINEER'S APPROVAL.

WELDING ELECTRODES: E70XX

ALLOWABLE SOIL BEARING PRESSURE ASSUMED: 2000 PSF

ISOLATED LATERAL BEARING FOUNDATIONS FOR SIGNS NOT ADVERSELY AFFECTED

A 1/2" MOTION AT THE GROUND SURFACE DUE TO SHORT TERM LATERAL LOADS

SHALL BE PERMITTED TO BE DESIGNED USING TWO TIMES THE TABULATED CODE

VALUES.

ALL FOOTINGS SHALL BEAR ON FIRM UNDISTURBED RESIDUAL SOIL AND/OR

ENGINEERED EARTH.

FILL COMPACTED TO 98% OF ITS MAXIMUM DRY DENSITY AS PER ASTM D 698-70

(STANDARD PROCTOR) UNLESS NOTED OTHERWISE. THE SOIL BEARING

CAPACITY IS TO BE VERIFIED BY A GEOTECHNICAL ENGINEER PRIOR TO

CONSTRUCTION. IF ALLOWABLE BEARING AND/OR LATERAL PRESSURE IS LESS

THAN THE ABOVE ASSUMED AND/OR CALCULATED PRESSURES, THE ENGINEER

SHOULD BE CONTACTED FOR RE-EVALUATION.

EXCAVATION SHALL BE FREE OF LOOSE SOIL BEFORE POURING CONCRETE.

WELDERS SHALL BE CERTIFIED FOR THE TYPE OF WELDING.

ADEQUATELY BRACE POLES) UNTIL CONCRETE HAS SET UP FOR 14 DAYS.

GROUT UNDER BASE PLATES WITH NON-SHRINK GROUT.

THIS ENGINEER DOES NOT WARRANT THE ACCURACY OF DIMENSIONS

FURNISHED BY OTHERS.

ALL EXPOSED STEEL SHALL BE PAINTED WITH AN ENAMEL PAINT TO INHIBIT

CORROSION.

THIS DESIGN IS FOR THE INDICATED ADDRESS ONLY, AND SHOULD NOT BE USED

AT OTHER LOCATIONS WITHOUT WRITTEN PERMISSION OF THE ENGINEER.

DESIGN OF DETAILS AND STRUCTURAL MEMBERS NOT SHOWN, BY OTHERS.

MBI

MEL COMPANIES INC.
209 N. WEBBARGER RD.
KNOXVILLE, TN 37918
PHONE 865.584.0998
SIGN-ENGINEER.COM

PROJECT:
11775 Meridian Market View, Falcon, CO 80831
DRAWING TITLE:
ARBYS

CHECKED BY: DEW
FCM
210537.028

DATE: 06/09/21
REV # 1
DATE 08/07/21
DRAWN BY JRM

DRAWING NO. DWG. 2



NOTES

- 1.) SEE MANUFACTURERS DRAWINGS FOR ADDITIONAL DETAILS AND DIMENSIONS.
- 2.) SIGN CABINET AND CONNECTION BY DESIGN TEAM.

- * CLIENT - DESIGN TEAM
- * 2018 IBC
- * RISK CATEGORY II
- * 115 MPH WIND SPEED, EXP. C

WIND DATA									
Building Code	2018 IBC	Importance factor, I	1.0	Dominant Recur. B	0.05	Deflection Limit	1/60		
Wind Load Criteria	ASCE 7-16	Directionality Factor, K_d	0.85	Neural frequency, n	1.4 Hz	Deflection at D+1/4	2 3/4 in		
Wind Speed, V	115 mph	Topography Factor, K_z	1.0	Gust Effect Factor, G	0.85	Deflection Ratio	1/127		
Exposure Category	C	Basic Pressure, q , q_s	17.3 psf	Wind Load Factor, C_e	0.8				
Wind Pressure Overlap per	0 psi								
Foundation Requirements									
GEOMETRIC INPUT									
No. of Poles	1	Monopoles	No						
SUPPORT POLE DESIGN SUMMARY									
Section	Location	Type	Height	Width	Height	Area	Wind	Wind	Wind
			ft	ft	ft	ft ²	Dir.	Dir.	Dir.
1	Base	Single Pole w/ Channel	4.00	6.00	6.00	36.00	1.0	1.0	1.0
2		Single Pole w/ Channel	4.00	6.00	6.00	36.00	1.0	1.0	1.0
3		Single Pole (Round)	4.17	0.50	0.50	0.25	1.0	1.0	1.0
4		Single Pole (Round)	4.17	0.50	0.50	0.25	1.0	1.0	1.0
5		Single Pole (Round)	4.17	0.50	0.50	0.25	1.0	1.0	1.0
6		Single Pole (Round)	4.17	0.50	0.50	0.25	1.0	1.0	1.0
7		Single Pole (Round)	4.17	0.50	0.50	0.25	1.0	1.0	1.0
8		Single Pole (Round)	4.17	0.50	0.50	0.25	1.0	1.0	1.0
9		Single Pole (Round)	4.17	0.50	0.50	0.25	1.0	1.0	1.0
10		Single Pole (Round)	4.17	0.50	0.50	0.25	1.0	1.0	1.0
11		Single Pole (Round)	4.17	0.50	0.50	0.25	1.0	1.0	1.0
12		Single Pole (Round)	4.17	0.50	0.50	0.25	1.0	1.0	1.0

STEEL									
SUPPORT POLE DESIGN SUMMARY									
Section	Location	Type	Height	Width	Height	Area	Wind	Wind	Wind
			ft	ft	ft	ft ²	Dir.	Dir.	Dir.
1	Base	Single Pole w/ Channel	4.00	6.00	6.00	36.00	1.0	1.0	1.0
2		Single Pole w/ Channel	4.00	6.00	6.00	36.00	1.0	1.0	1.0
3		Single Pole (Round)	4.17	0.50	0.50	0.25	1.0	1.0	1.0
4		Single Pole (Round)	4.17	0.50	0.50	0.25	1.0	1.0	1.0
5		Single Pole (Round)	4.17	0.50	0.50	0.25	1.0	1.0	1.0
6		Single Pole (Round)	4.17	0.50	0.50	0.25	1.0	1.0	1.0
7		Single Pole (Round)	4.17	0.50	0.50	0.25	1.0	1.0	1.0
8		Single Pole (Round)	4.17	0.50	0.50	0.25	1.0	1.0	1.0
9		Single Pole (Round)	4.17	0.50	0.50	0.25	1.0	1.0	1.0
10		Single Pole (Round)	4.17	0.50	0.50	0.25	1.0	1.0	1.0
11		Single Pole (Round)	4.17	0.50	0.50	0.25	1.0	1.0	1.0
12		Single Pole (Round)	4.17	0.50	0.50	0.25	1.0	1.0	1.0

FOUNDATION DESIGN SUMMARY									
Element	Dir.	Type	Height	Width	Height	Area	Wind	Wind	Wind
			ft	ft	ft	ft ²	Dir.	Dir.	Dir.
1	0.00	Base Plate	3.3	21.3	1.0	0.0	0.0	0.0	0.0
2	18.17	Match Plate 1	0.6	2.2	0.7	0.3	0.0	0.0	0.0

PLATE DESIGN SUMMARY									
Type	Dir.	Height	Width	Height	Area	Wind	Wind	Wind	Wind
		ft	ft	ft	ft ²	Dir.	Dir.	Dir.	Dir.
Rectangular Base Plate									
Cruciform Base Plate									
Match Plate 1 (Upper)									
Match Plate 2 (Upper)									
Match Plate 3 (Upper)									
Match Plate 4 (Upper)									
Match Plate 5 (Upper)									
Match Plate 6 (Upper)									
Match Plate 7 (Upper)									
Match Plate 8 (Upper)									
Match Plate 9 (Upper)									
Match Plate 10 (Upper)									
Match Plate 11 (Upper)									
Match Plate 12 (Upper)									
Match Plate 13 (Upper)									
Match Plate 14 (Upper)									
Match Plate 15 (Upper)									
Match Plate 16 (Upper)									
Match Plate 17 (Upper)									
Match Plate 18 (Upper)									
Match Plate 19 (Upper)									
Match Plate 20 (Upper)									
Match Plate 21 (Upper)									
Match Plate 22 (Upper)									
Match Plate 23 (Upper)									
Match Plate 24 (Upper)									
Match Plate 25 (Upper)									
Match Plate 26 (Upper)									
Match Plate 27 (Upper)									
Match Plate 28 (Upper)									
Match Plate 29 (Upper)									
Match Plate 30 (Upper)									
Match Plate 31 (Upper)									
Match Plate 32 (Upper)									
Match Plate 33 (Upper)									
Match Plate 34 (Upper)									
Match Plate 35 (Upper)									
Match Plate 36 (Upper)									
Match Plate 37 (Upper)									
Match Plate 38 (Upper)									
Match Plate 39 (Upper)									
Match Plate 40 (Upper)									
Match Plate 41 (Upper)									
Match Plate 42 (Upper)									
Match Plate 43 (Upper)									
Match Plate 44 (Upper)									
Match Plate 45 (Upper)									
Match Plate 46 (Upper)									
Match Plate 47 (Upper)									
Match Plate 48 (Upper)									
Match Plate 49 (Upper)									
Match Plate 50 (Upper)									
Match Plate 51 (Upper)									
Match Plate 52 (Upper)									
Match Plate 53 (Upper)									
Match Plate 54 (Upper)									
Match Plate 55 (Upper)									
Match Plate 56 (Upper)									
Match Plate 57 (Upper)									
Match Plate 58 (Upper)									
Match Plate 59 (Upper)									
Match Plate 60 (Upper)									
Match Plate 61 (Upper)									
Match Plate 62 (Upper)									
Match Plate 63 (Upper)									
Match Plate 64 (Upper)									
Match Plate 65 (Upper)									
Match Plate 66 (Upper)									
Match Plate 67 (Upper)									
Match Plate 68 (Upper)									
Match Plate 69 (Upper)									
Match Plate 70 (Upper)									
Match Plate 71 (Upper)									
Match Plate 72 (Upper)									
Match Plate 73 (Upper)									
Match Plate 74 (Upper)									
Match Plate 75 (Upper)									
Match Plate 76 (Upper)									
Match Plate 77 (Upper)									
Match Plate 78 (Upper)									
Match Plate 79 (Upper)									
Match Plate 80 (Upper)									
Match Plate 81 (Upper)									
Match Plate 82 (Upper)									
Match Plate 83 (Upper)									
Match Plate 84 (Upper)									
Match Plate 85 (Upper)									
Match Plate 86 (Upper)									
Match Plate 87 (Upper)									
Match Plate 88 (Upper)									
Match Plate 89 (Upper)									
Match Plate 90 (Upper)									
Match Plate 91 (Upper)									
Match Plate 92 (Upper)									
Match Plate 93 (Upper)									
Match Plate 94 (Upper)									
Match Plate 95 (Upper)									
Match Plate 96 (Upper)									
Match Plate 97 (Upper)									
Match Plate 98 (Upper)									
Match Plate 99 (Upper)									
Match Plate 100 (Upper)									

FOUNDATION DESIGN SUMMARY													
Type	Diameter		Width		Height		Length		Depth	Volume	Reinforcing	Status	Allowable Soil Pressure
	ft	in	ft	in	ft	in	ft	in					
✓ Caisson	2.00	"	"	"	"	"	7.50	0.87				OK	300 psf/ft
Vertical Slab													
Spread													

1. REFER TO SIGN COMPANY'S DRAWING(S) FOR MORE DETAILS.

2. ALL DESIGNS, DETAILING, FABRICATION AND CONSTRUCTION SHALL CONFORM TO:

2018 IBC

ACI

ANSI

AMERICAN WELDING SOCIETY

LOCAL BUILDING CODES & ORDINANCES

3. MATERIAL PROPERTIES:

STEEL PIPE: ASTM A53 GRADE B

STEEL TUBE: ASTM A500 GRADE B

THREADED ROD: ASTM A193 GRADE B7

STEEL ANGLES, CHANNELS, STRUCTURAL SHAPES, & PLATES:

ASTM A36

WELDING ELECTRODES: E70XX

4. WELDERS SHALL BE CERTIFIED FOR TYPE OF WELDING.

5. THIS ENGINEER DOES NOT WARRANT THE ACCURACY OF

6. ALL EXPOSED STEEL SHALL BE PAINTED WITH AN ENAMEL PAINT TO

7. PROHIBIT CORROSION.

8. THE CONTRACTOR (INSTALLER) IS RESPONSIBLE FOR THE MEANS &

9. METHODS OF CONSTRUCTION IN REGARDS TO JOB SITE SAFETY.

10. THIS DESIGN IS FOR THE INDICATED ADDRESS ONLY, AND SHOULD

11. NOT BE USED AT OTHER LOCATIONS WITHOUT WRITTEN

12. PERMISSION OF THE ENGINEER.

13. DESIGN OF DETAILS AND STRUCTURAL MEMBERS NOT SHOWN,

14. ARE BY OTHERS.

15. INSTALLED FASTENERS MUST MEET OR EXCEED THE VALUES

16. SHOWN IN THE LIST ON THE CALCULATIONS SHEET.

17. ALL ANCHORS SHALL BE STAINLESS STEEL.

18. WALL SIGNS ATTACHED TO EXTERIOR WALLS OF SOLID MASONRY

19. OR CONCRETE, SHALL BE SAFELY AND

20. SECURELY ATTACHED BY MEANS OF METAL ANCHORS,

21. BOLTS OR EXPANSION BOLTS OF NOT LESS THAN 3/8"

22. DIAMETER AND SHALL BE EMBEDDED AT LEAST 5 INCHES.

23. WOOD BLOCKS SHALL NOT BE USED FOR ANCHORAGE,

24. EXCEPT IN THE CASE OF WALL SIGNS ATTACHED TO

25. BUILDINGS WITH WALLS OF WOOD.

26. A WALL SIGN SHALL NOT BE SUPPORTED BY ANCHORAGE

27. SECURED TO AN UNBRACED PARAPET WALL LAG BOLT

28. ANCHORAGE INTO WOOD 3" MIN. EMBEDMENT.

29. A THREADED ROD MAY BE USED FOR THRU BOLT CONNECTION

30. (USE WASHER AND DOUBLE NUT OR CRIMP THREADS BOTH ENDS

31. TYP.)

32. SIGN MUST BE ATTACHED TO OR THROUGH SOLID BLOCKING.

33. ATTACHMENT TO SHEATHING ONLY IS NOT ACCEPTABLE.

34. AT E.I.F.S. INSTALLATIONS INSTALL WITH PIPE SLEEVE. SEAL ALL

35. PENETRATIONS.

36. THIS DESIGN FOR ANCHORAGE TO EXISTING STRUCTURE ONLY,

37. RESIST THE ADDITIONAL LOADING. THIS ENGINEER NOT

38. RESPONSIBLE FOR EXISTING STRUCTURE.

39. CHANNEL LETTERS AND WALL SIGNS ARE BY OTHERS

40. ELECTRICAL RACEWAYS ARE BY OTHERS.

NOTES

- 1) SEE MANUFACTURERS DRAWINGS FOR ADDITIONAL DETAILS AND DIMENSIONS.

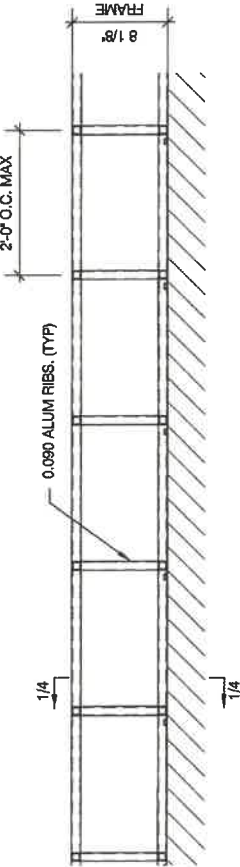
- 2) SIGN CABINET AND CONNECTION BY DESIGN TEAM.

* CLIENT - DESIGN TEAM

* 2018 IBC

* RISK CATEGORY II

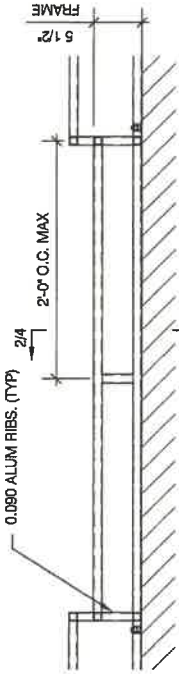
* 115 MPH WIND SPEED, EXP. C



TYPICAL BAND (A) SECTION

SCALE: NTS

1



TYPICAL BAND (B) SECTION

SCALE: NTS

NOTE:

WHERE ALUMINUM ALLOY PARTS ARE IN CONTACT WITH STEEL OR OTHER DISSIMILAR METALS, THE STEEL SURFACES TO BE PLACED IN CONTACT WITH THE UNCOATED ALUMINUM SHALL BE PAINTED WITH GOOD QUALITY NON LEAD CONTAINING PRIMER PAINT, SUCH AS ZINC MOLYBDATE, ALKYL TYPE PRIMER IN ACCORDANCE WITH FEDERAL SPECIFICATION TT-P-845B, FOLLOWED BY TWO COATS OF PAINT CONSISTING OF 2 LB. OF ALUMINUM PASTE PIGMENT ASTM SPECIFICATION D962-91, TYPE 2, CLASS B1 PER GALLON OF VARNISH MEETING FEDERAL SPECIFICATION TT-V-81, TYPE II, OR EQUIVALENT.

WIND DATA	2018 IBC	1.0	Base Pressure q_{net} q_{net}	17.5 psf
Building Code	ASCE 7-16	0.85	Mean Roof Height, h	20 ft
Wind Speed Criteria	15 mph	0.0	Exposure Coefficient, K_e	0.0
Exposure Category	C	0.0	Velocity Pressure, V_p	17.5 psf

FASTENER DATA

Mark	Used	Type	Material	Allow.	Anchor	Wind	Notes
1	Yes	3/8" x 12" Lag Bolt	Wood	300	300	3	
2	No	3/8" x 12" Lag Bolt	Wood	300	300	3	
3	No	3/8" x 12" Lag Bolt	Wood	300	300	3	
4	No	3/8" x 12" Lag Bolt	Wood	300	300	3	
5	No	3/8" x 12" Lag Bolt	Wood	300	300	3	
6	No	3/8" x 12" Lag Bolt	Wood	300	300	3	

WALL SIGN #1 - FLUSH MOUNT TO WALL

Direction: 1

Wind Pressure Coefficient: 0.0

Interior Application: 1

Wind Pressure Coefficient: 0.0

Wind Pressure Coefficient: 0.0

Wind Pressure Coefficient: 0.0

Wind Pressure Coefficient: 0.0

Wind Pressure Coefficient: 0.0

Wind Pressure Coefficient: 0.0

Wind Pressure Coefficient: 0.0

Wind Pressure Coefficient: 0.0

Wind Pressure Coefficient: 0.0

Wind Pressure Coefficient: 0.0

Wind Pressure Coefficient: 0.0

Wind Pressure Coefficient: 0.0

Wind Pressure Coefficient: 0.0

Wind Pressure Coefficient: 0.0

Wind Pressure Coefficient: 0.0

Wind Pressure Coefficient: 0.0

Wind Pressure Coefficient: 0.0

Wind Pressure Coefficient: 0.0

Wind Pressure Coefficient: 0.0

Wind Pressure Coefficient: 0.0

Wind Pressure Coefficient: 0.0

Wind Pressure Coefficient: 0.0

Wind Pressure Coefficient: 0.0

Wind Pressure Coefficient: 0.0

Wind Pressure Coefficient: 0.0

PROJECT: 11775 Meridian Market View, Falcon, CO 80831

DRAWING TITLE: ARBYS

PHONE: 865.584.0969

SIGN-ENGINEER.COM

DATE: 08/09/21

REV # 08/07/21

DATE: 08/07/21

REV # 08/07/21

DATE: 08/07/21

REV # 08/07/21

DATE: 08/07/21

REV # 08/07/21

DATE: 08/07/21

REV # 08/07/21

DATE: 08/07/21

REV # 08/07/21

DATE: 08/07/21

REV # 08/07/21

DATE: 08/07/21

REV # 08/07/21

DATE: 08/07/21

CHECKED BY: DEW

FCM

210537.028

08/09/21

DATE: 08/09/21

REV # 08/07/21

DATE: 08/07/21

REV # 08/07/21

DATE: 08/07/21

REV # 08/07/21

DATE: 08/07/21

REV # 08/07/21

DATE: 08/07/21

REV # 08/07/21

DATE: 08/07/21

REV # 08/07/21

DATE: 08/07/21

DWG. 3

08/09/21

DATE: 08/09/21

REV # 08/07/21

DATE: 08/07/21

REV # 08/07/21

DATE: 08/07/21

REV # 08/07/21

DATE: 08/07/21

REV # 08/07/21

DATE: 08/07/21

REV # 08/07/21

DATE: 08/07/21

REV # 08/07/21

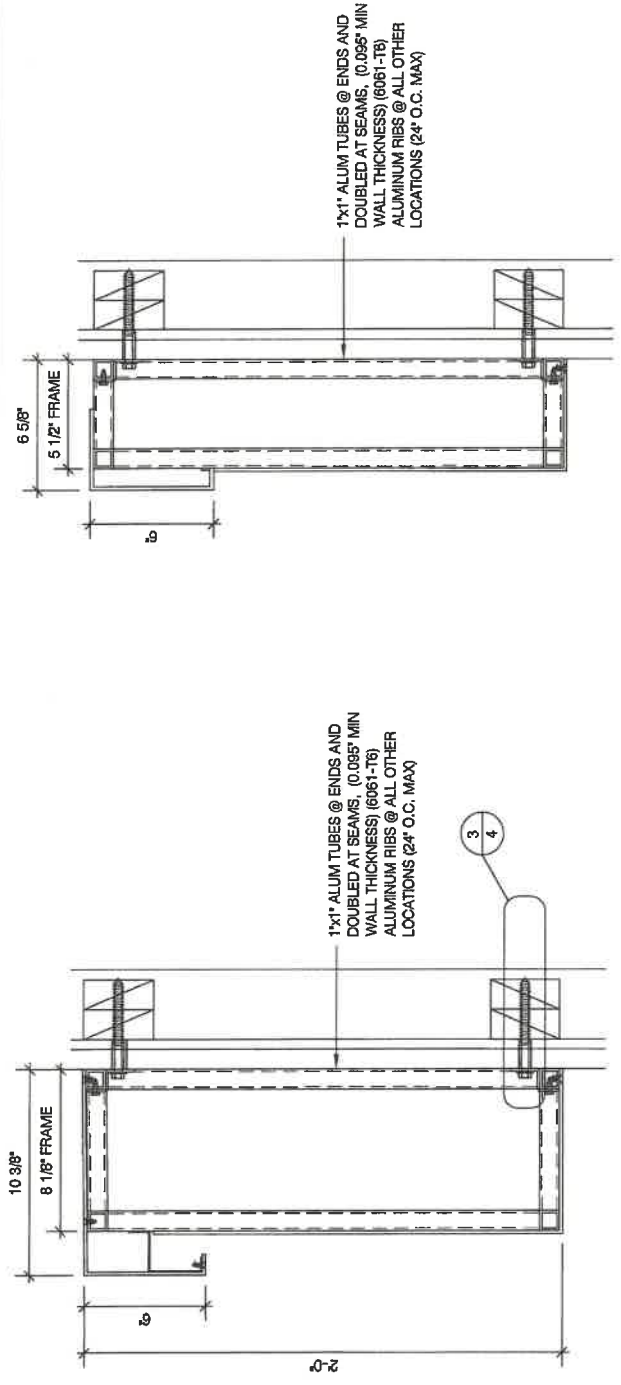
DATE: 08/07/21

REV # 08/07/21

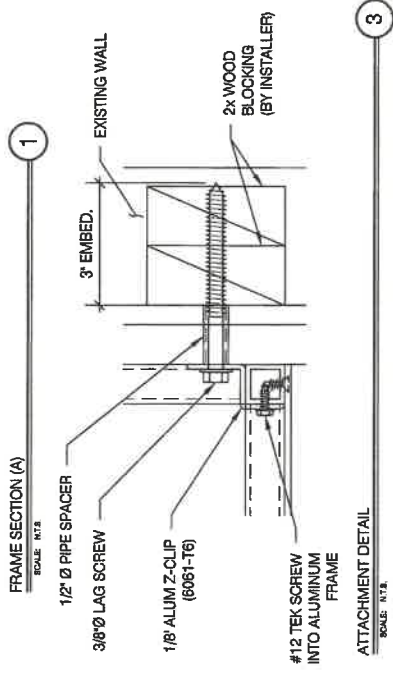
DATE: 08/07/21

NOTES
 1.) SEE MANUFACTURERS DRAWINGS FOR
 ADDITIONAL DETAILS AND DIMENSIONS.
 2.) SIGN CABINET AND CONNECTION
 BY DESIGN TEAM.

* CLIENT - DESIGN TEAM
 * 2018 IBC
 * RISK CATEGORY II
 * 115 MPH WIND SPEED, EXP. C



FRAME SECTION (A)
 SCALE: N.T.S.
 1



ATTACHMENT DETAIL
 SCALE: N.T.S.
 3

MBI
 MBI COMPANIES INC.
 299 N. WEISGARDNER RD.
 KNOXVILLE, TN 37919
 PHONE 865.584.0969
 SIGN-ENGINEER.COM

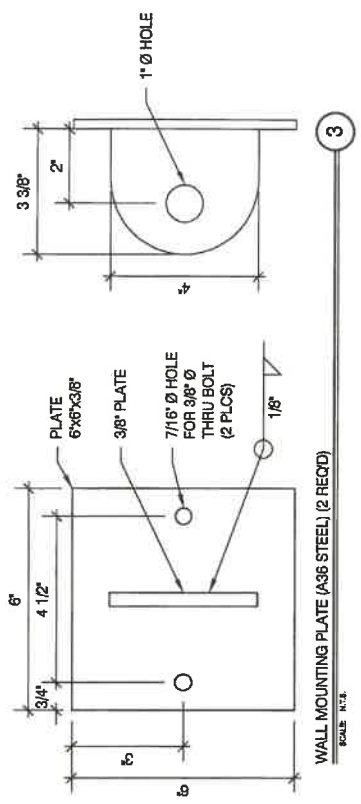
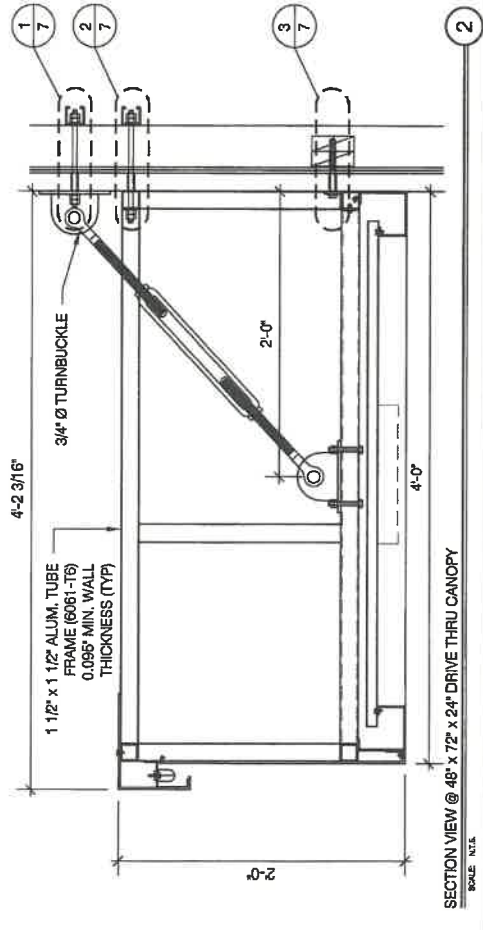
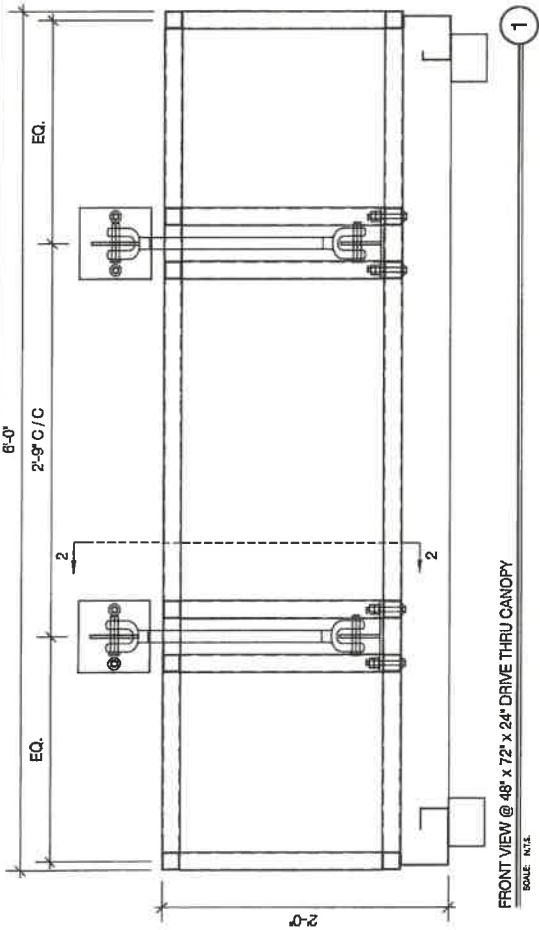
PROJECT:
 11775 Meridian Market View, Falcon, CO 80831
 DRAWING TITLE:
ARBYS

DRAWN BY: DEW
 CHECKED BY: FCM
 COMMA. NO. 210537.028

REV #	DATE	DRAWN BY
1	06/07/21	JRM
2		
3		
4		

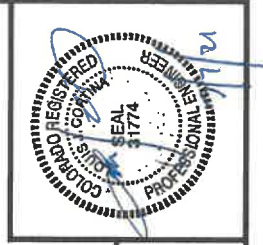
DRAWING NO.
DWG. 4





NOTES
1.) SEE MANUFACTURERS DRAWINGS FOR ADDITIONAL DETAILS AND DIMENSIONS.
2.) SIGN CABINET AND CONNECTION BY DESIGN TEAM.

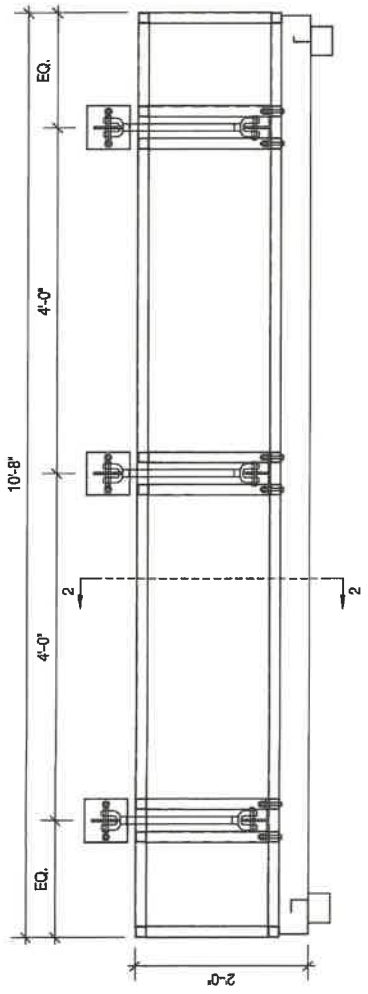
* CLIENT - DESIGN TEAM
* 2018 IBC
* RISK CATEGORY II
* 115 MPH WIND SPEED, EXP. C



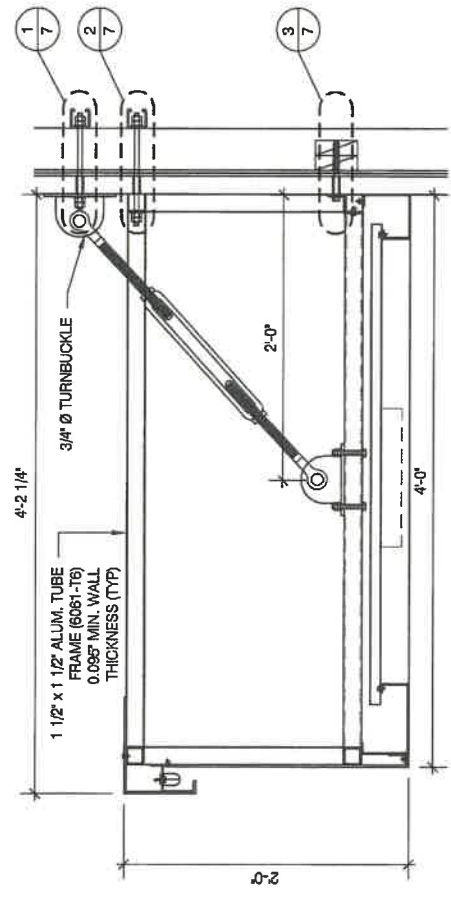
MBI MBI COMPANIES, INC. 299 N. WEBB GARBER RD. KNOXVILLE, TN 37919 PHONE 865.564.0989 SIGN-ENGINEER.COM	PROJECT: 11775 Meridian Market View, Falcon, CO 80831	DRAWING NO. DWG. 5
	DRAWING TITLE: ARBYS	DATE: 06/09/21
CHECKED BY: FCM	COMM. NO. 210537.028	REV # 1 DATE 06/07/21 DRAWN BY JRM

NOTES
 1.) SEE MANUFACTURERS DRAWINGS FOR
 ADDITIONAL DETAILS AND DIMENSIONS.
 2.) SIGN CABINET AND CONNECTION
 BY DESIGN TEAM.

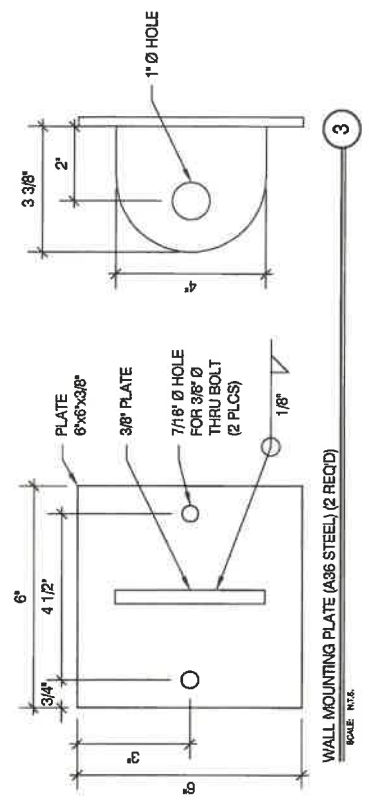
* CLIENT - DESIGN TEAM
 * 2018 IBC
 * RISK CATEGORY II
 * 115 MPH WIND SPEED, EXP. C



FRONT VIEW @ 48' x 128' x 24' CANOPY
 SCALE: N.T.S.



SECTION VIEW @ 48' x 128' x 24' CANOPY
 SCALE: N.T.S.



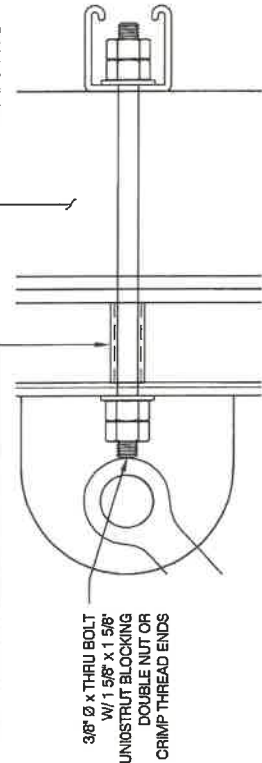
WALL MOUNTING PLATE (A36 STEEL) (2 REQD)
 SCALE: N.T.S.



MBI MBI COMPANIES, INC. 259 N. WEBB AVE. RD. KNOXVILLE, TN 37919 PHONE: 605.584.0868 SIGN-ENGINEER.COM	PROJECT: 11775 Meridian Market View, Falcon, CO 80831	DRAWING NO. DWG. 6
	DRAWING TITLE: ARBYS	DATE: 06/09/21
CHECKED BY: FOM	DATE: 06/07/21	DRAWN BY: DEW
REV # 1	REV # 1	REV # 1

1/2" Ø PIPE SPACER

EXISTING WALL



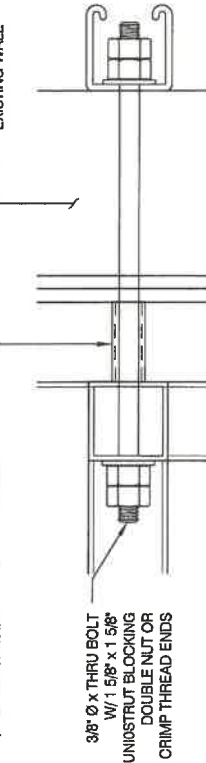
THRU BOLT ATTACHMENT DETAIL

SCALE: N.T.S.

1

1/2" Ø PIPE SPACER

EXISTING WALL



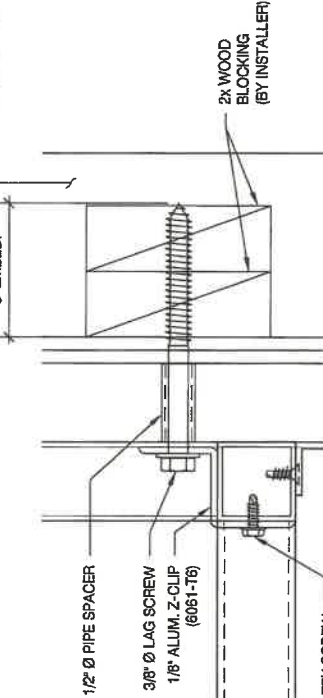
THRU BOLT ATTACHMENT DETAIL

SCALE: N.T.S.

2

EXISTING WALL

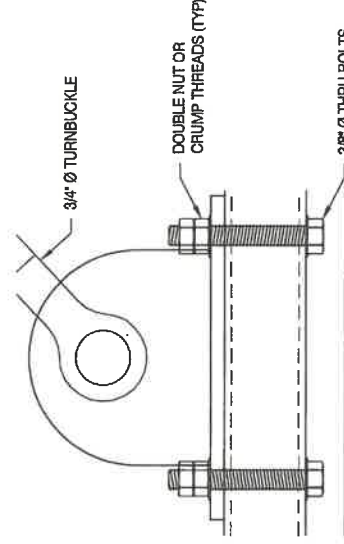
3" EMBED.



THRU BOLT ATTACHMENT DETAIL

SCALE: N.T.S.

3



FRAME CONNECTION

SCALE: N.T.S.

4

NOTES

- 1.) SEE MANUFACTURERS DRAWINGS FOR ADDITIONAL DETAILS AND DIMENSIONS.
- 2.) SIGN CABINET AND CONNECTION BY DESIGN TEAM.

- * CLIENT - DESIGN TEAM
- * 2018 IBC
- * RISK CATEGORY II
- * 115 MPH WIND SPEED, EXP. C
- * 20 PSF GROUND SNOW LOAD

MBI

MBI COMPANIES, INC.
299 N. WEISGAARDER RD.
KNOXVILLE, TN 37919
PHONE 865.564.0999
SIGN-ENGINEER.COM

PROJECT:
11775 Meridian Market View, Falcon, CO 80831
DRAWING TITLE:

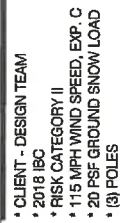
ARBYS

DRAWN BY: DEW
CHECKED BY: FOM
COMM. NO.: 210537 028

DATE: 06/09/21

DWG. 7



8
DWG.
DRAWING NO.

DATE:	06/09/21	
REV #	DATE	DRAWN BY
REV #1	06/07/21	JRM

SCALE: N.T.S.

C

FRONT VIEW @ 3 POLE CANOPY

PROJECT:
11775 Meridian Market View, Falcon, CO 80831

DRAWING TITLE:

ARBY'S

MEL COMPANIES INC.
2908 N. WEISGARBER RD.
KNOXVILLE, TN 37919
PHONE 865.584.0999
SIGN-ENGINEER.COM

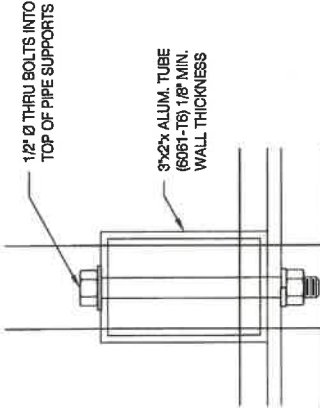
MBI

NOTES

- 1.) SEE MANUFACTURERS DRAWINGS FOR ADDITIONAL DETAILS AND DIMENSIONS.
- 2.) SIGN CABINET AND CONNECTION BY DESIGN TEAM.

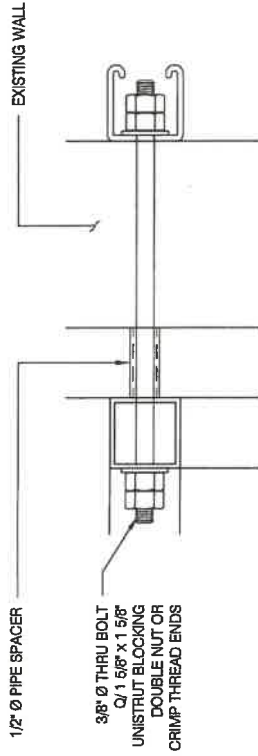
* CLIENT - DESIGN TEAM

- * 2018 IBC
- * RISK CATEGORY II
- * 115 MPH WIND SPEED, EXP. C
- * 20 PSF GROUND SNOW LOAD
- * (3) POLES



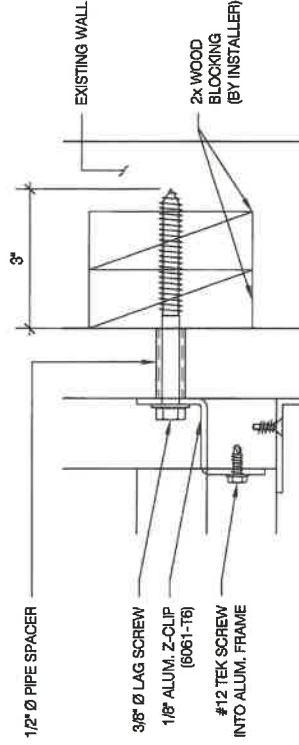
COLUMN CONNECTION
SCALE: N.T.S.

3



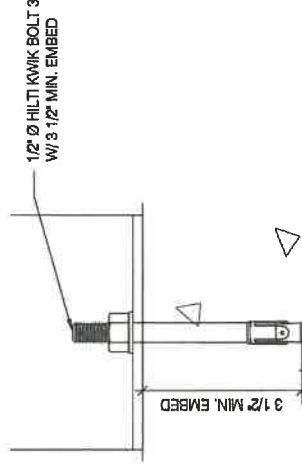
UPPER FRAME ATTACHMENT TO WALL
SCALE: N.T.S.

1



UPPER FRAME ATTACHMENT TO WALL
SCALE: N.T.S.

2



BASE CONNECTION
SCALE: N.T.S.

4



MBI
MEL COMPANIES INC.
289 N. WESGARDNER RD.
KNOXVILLE, TN 37919
PHONE 865.584.0859
SIGN-ENGINEER.COM

PROJECT: 11775 Meridian Market View, Falcon, CO 80831
DRAWING TITLE: ARBY'S

DRAWN BY: DEW
CHECKED BY: FCM
COMM. NO. 210537.028

REV #	DATE	DRAWN BY
1	06/07/21	JRU

DRAWING NO. DWG. 9