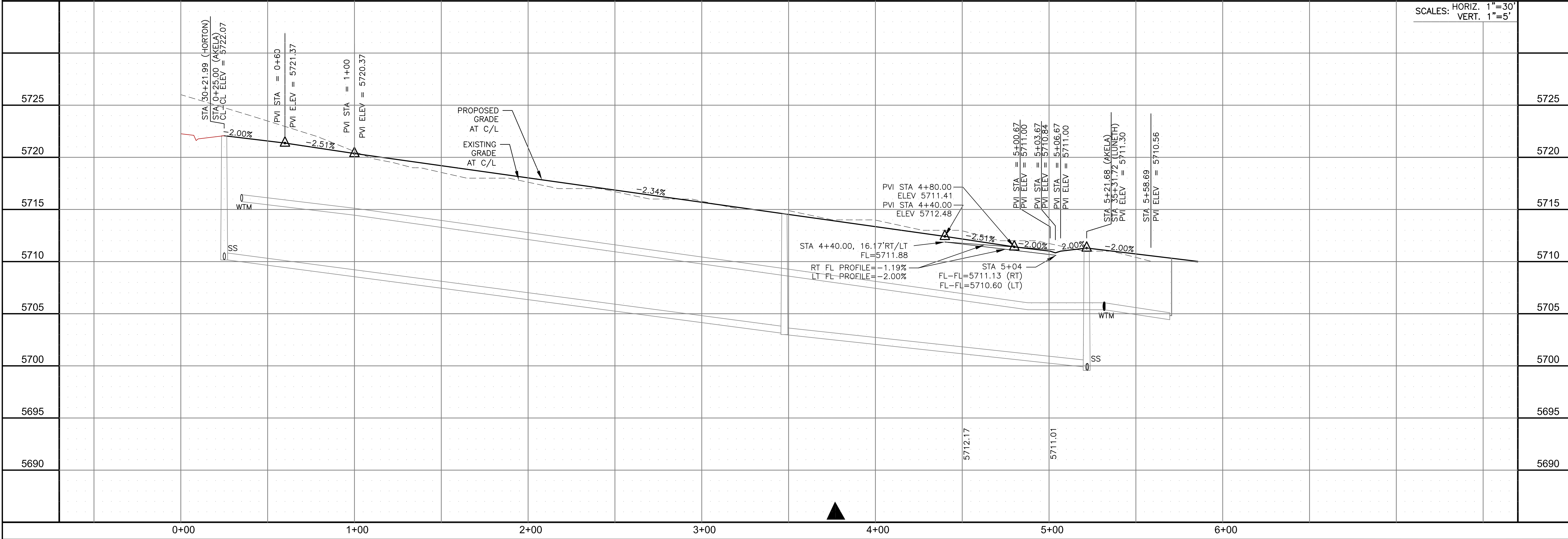
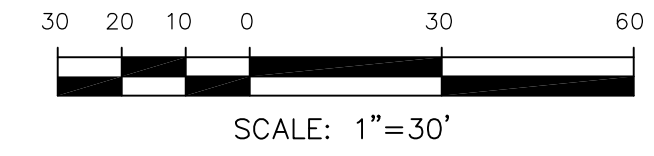
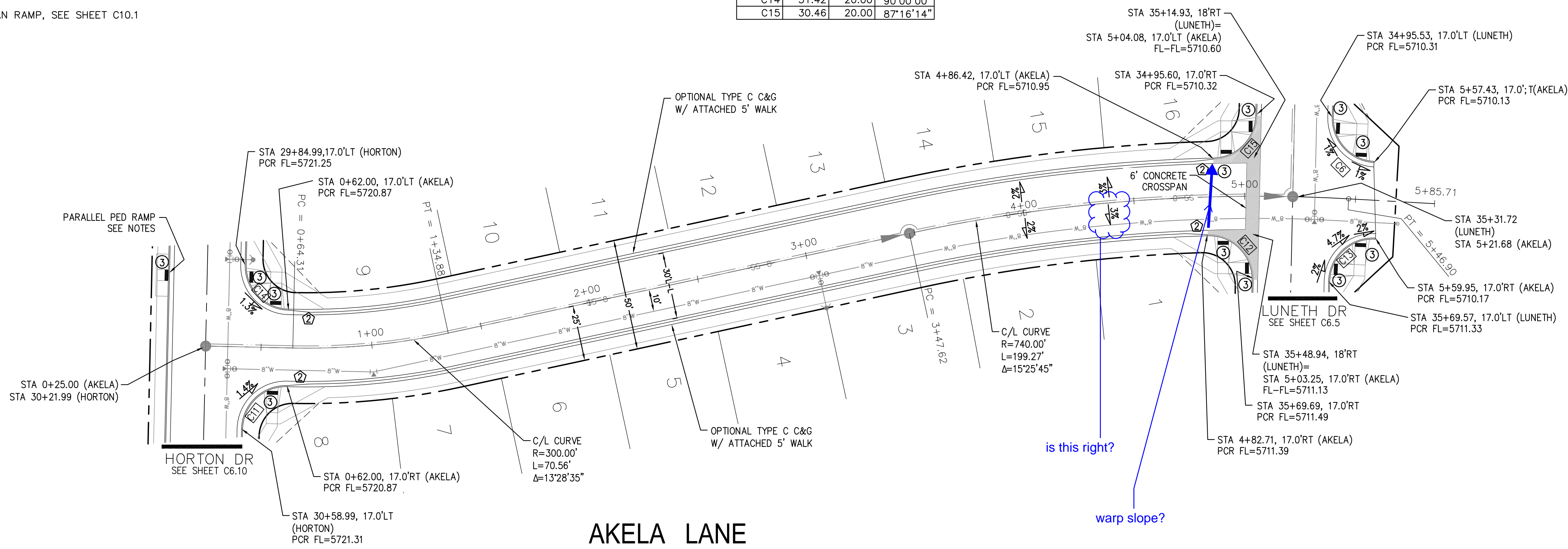
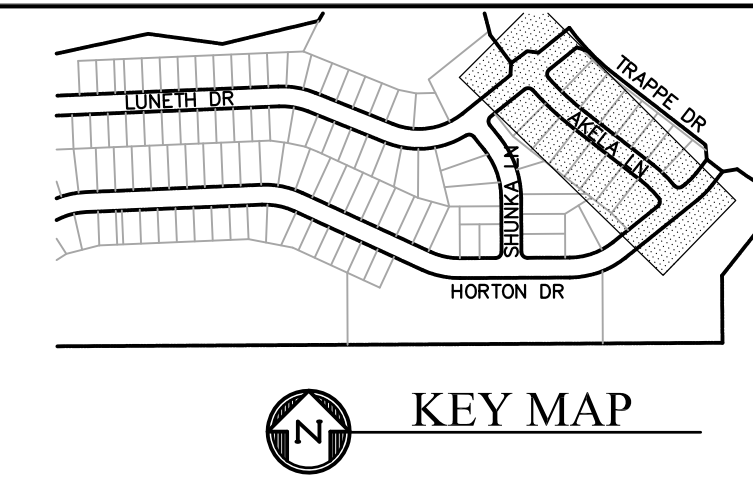


- NOTES
1. ALL SPOT ELEVATIONS ARE FLOW LINE UNLESS OTHERWISE NOTED.
 2. SEE GRADING PLAN FOR GRADING INFORMATION.
 3. ALL STORM SEWER SHALL BE CLASS III RCP.
 4. ALL MHs SHALL BE TYPE 1 UNLESS OTHERWISE NOTED.

- ① CURVE DATA ID
- ② CURB TRANSITIONS
- ③ PEDESTRIAN RAMP, SEE SHEET C10.1

CURVE TABLE			
CURVE	LENGTH	RADIUS	DELTA
C6	30.73	20.00	88°02'50"
C11	31.42	20.00	90°00'00"
C12	32.47	20.00	93°01'01"
C13	32.10	20.00	91°57'10"
C14	31.42	20.00	90°00'00"
C15	30.46	20.00	87°16'14"



CORE ENGINEERING GROUP
 15004 1ST AVENUE S.
 BIRMGHAM, AL 35206
 PH: 205 970 1100
 CONTACT: RICHARD L. SCHINDLER, P.E.
 EMAIL: Rich@cegi.com

DATE: _____

DESCRIPTION: _____

NO: _____

PREPARED FOR: **CREEKSIDE SOUTH AT LORSON RANCH**
 212 N. WAHSATCH AVE., SUITE 301
 COLORADO SPRINGS, COLORADO 80903
 (719) 635-3200
 CONTACT: JEFF MARK

PROJECT: **LORSON, LLC**
 212 N. WAHSATCH AVE., SUITE 301
 COLORADO SPRINGS, COLORADO 80903
 (719) 635-3200
 CONTACT: JEFF MARK

DRAWN: RLS
 DESIGNED: RLS
 CHECKED: RLS

STREET/STORM
 AKELA LANE
 STA 0+00 TO 5+60

DATE: SEPT 10, 2020

PROJECT NO. 100.051

SHEET NUMBER C6.12

TOTAL SHEETS: 24