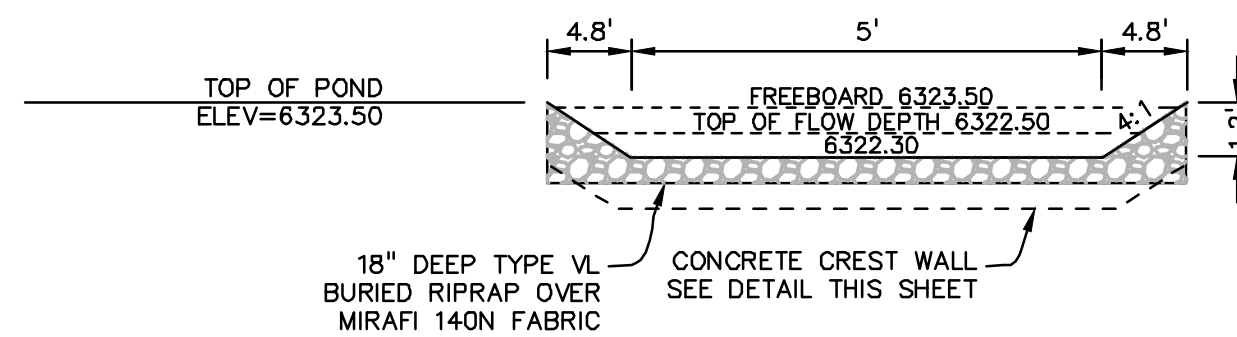
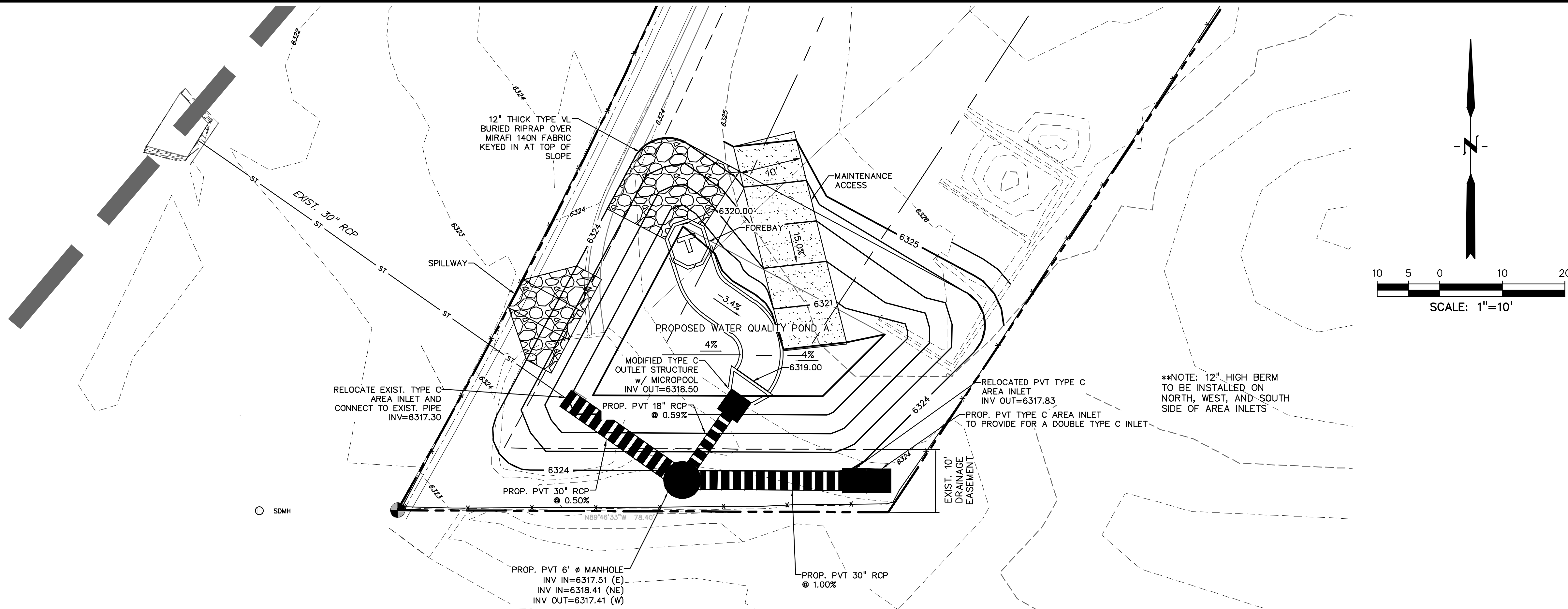
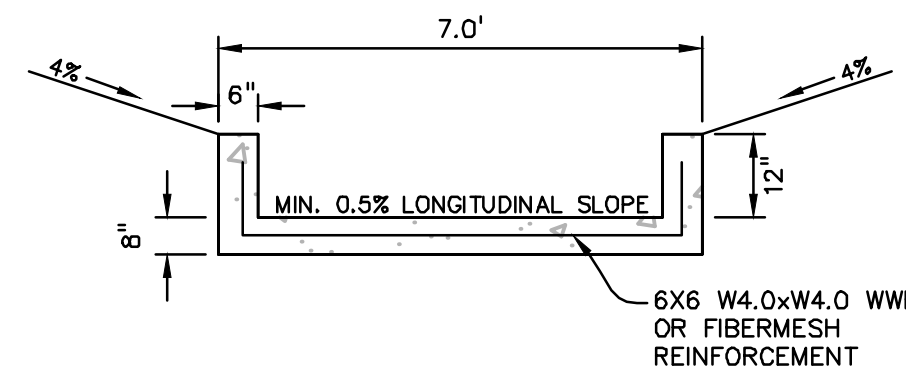


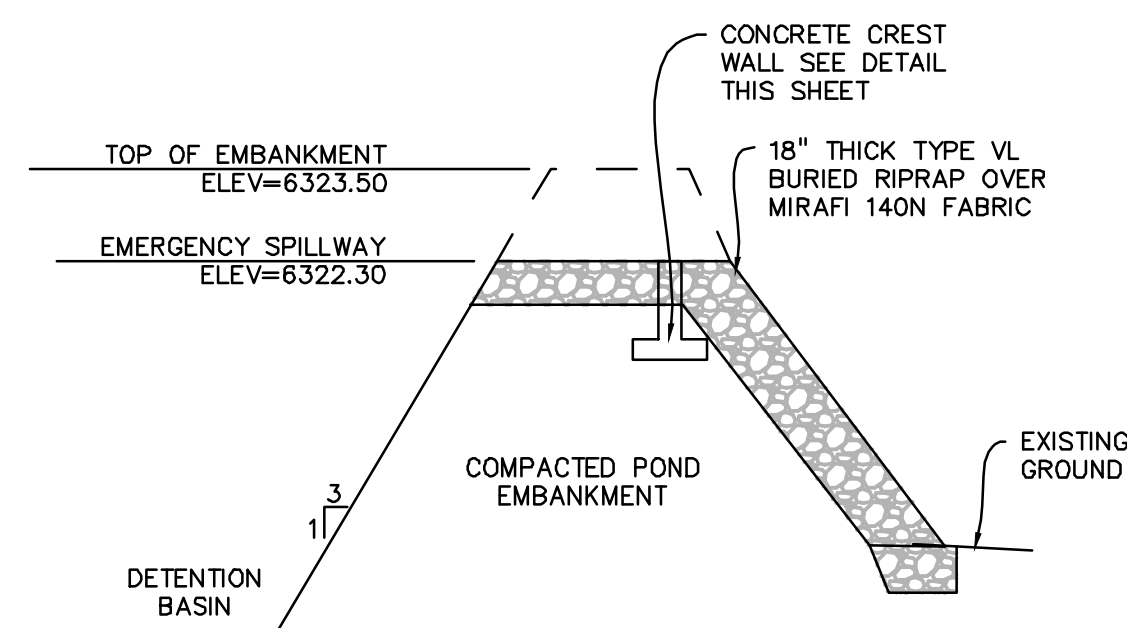
N:\21813-00CSCV\Drawings\21813-00CSCV.dwg, 7/16/24 1:27:42 PM



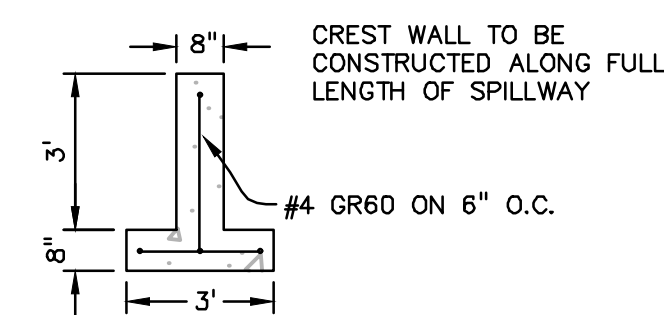
SPILLWAY SECTION
NO SCALE



CONCRETE TRICKLE CHANNEL SECTION
NO SCALE

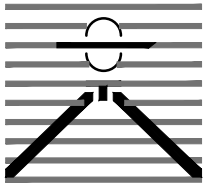


SPILLWAY SECTION
NO SCALE



CREST WALL SECTION
NO SCALE

PREPARED BY:



DREXEL, BARRELL & CO.
Engineers • Surveyors
3 SOUTH 7TH STREET
COLORADO SPGS, COLORADO 80905
CONTACT: TIM D. McCONNELL, P.E.
(719) 260-0887
BOULDER • COLORADO SPRINGS • GREELEY

CLIENT:


BLACK DIAMOND CABLE

7315 COLE VIEW
COLORADO SPRINGS, CO 80915
CONTACT: RYAN FOSTER
(719) 306-4478

SITE DEVELOPMENT PLAN FOR:

7315 COLE VIEW
EL PASO COUNTY, COLORADO

| ISSUE | DATE |
|---------------|------------|
| INITIAL ISSUE | 10/12/23 |
| LATEST ISSUE | 7/16/24 |
| | |
| | |
| | |
| | |
| | |
| DESIGNED BY: | SBN |
| DRAWN BY: | SBN |
| CHECKED BY: | TDM |
| FILE NAME: | 21813-00PD |



PREPARED UNDER MY DIRECT
SUPERVISION FOR AND ON BEHALF
OF DREXEL, BARRELL & CO.

DRAWING SCALE:
HORIZONTAL: 1"=10'
VERTICAL: N/A

DETENTION POND
DETAILS

PROJECT NO. 21813-00CSCV
DRAWING NO.

PD

811

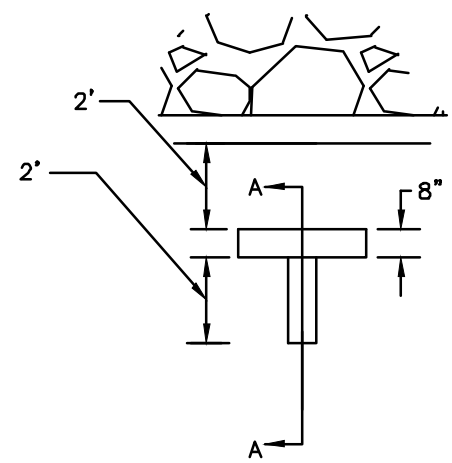
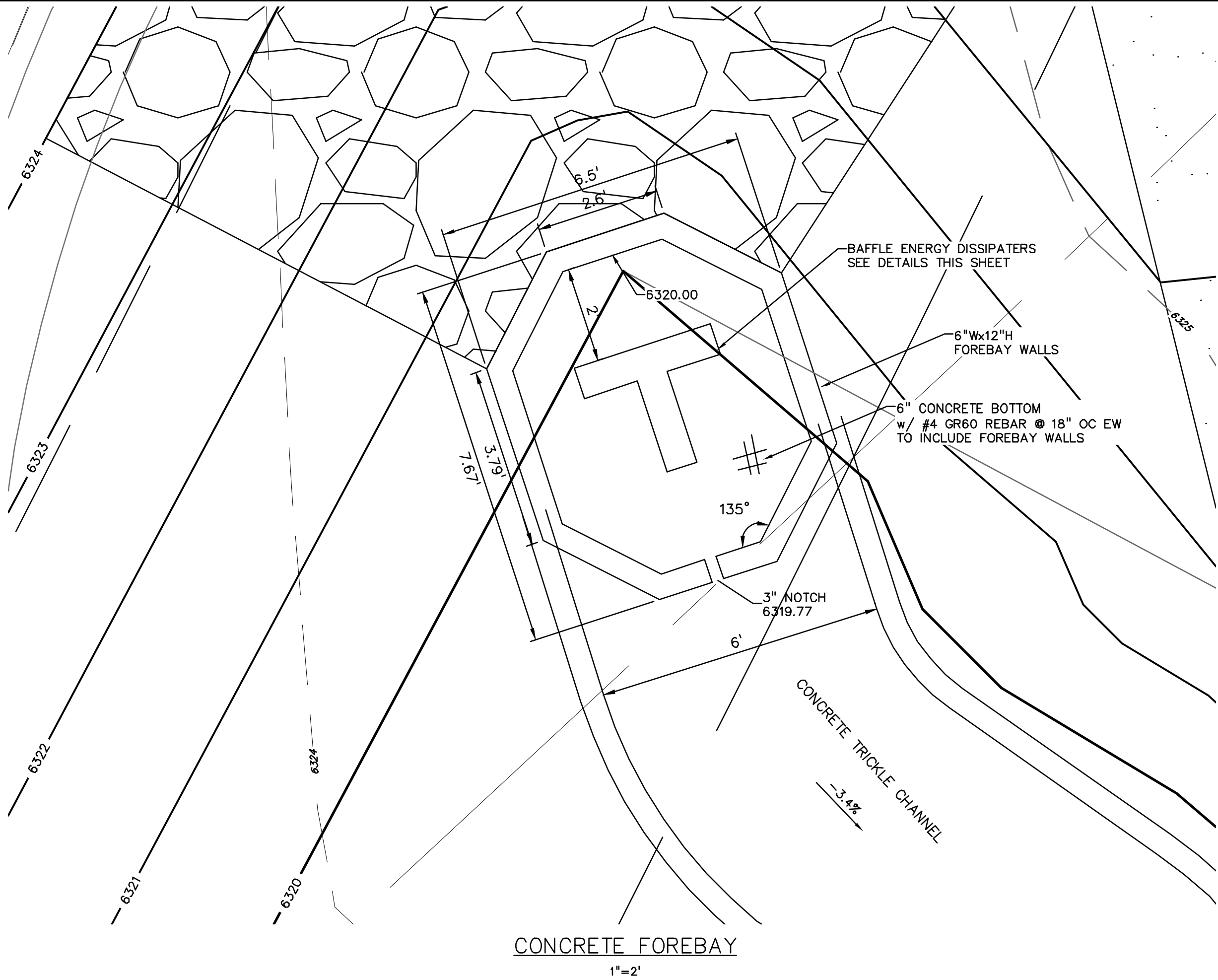
Know what's below.
Call before you dig.

CALL 3-BUSINESS DAYS IN ADVANCE
BEFORE YOU DIG, GRADE, OR
EXCAVATE FOR THE MARKING OF
UNDERGROUND MEMBER UTILITIES.

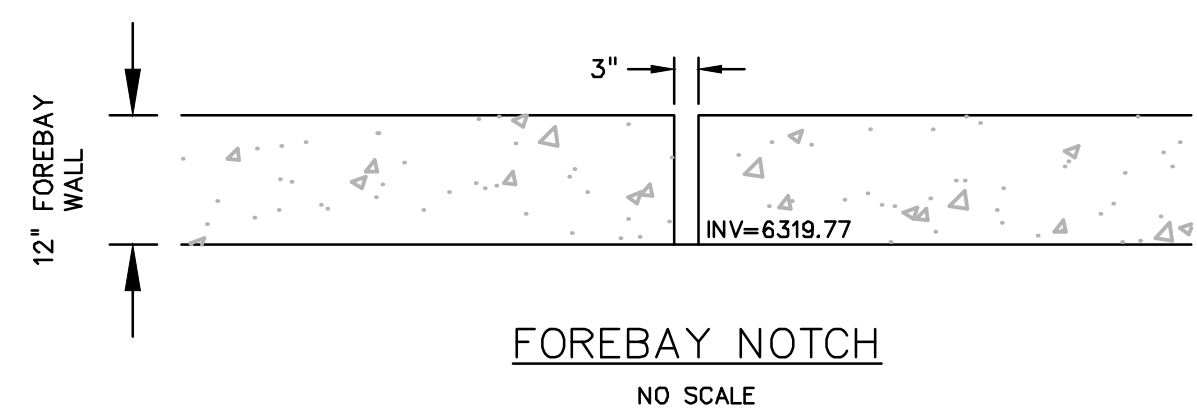
EPC PROJ. # PPR2344

SHEET: 2 OF 4

EPC 8/05/2024

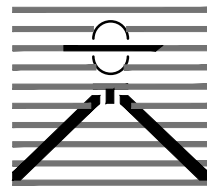


FOREBAY BAFFLE ENERGY DISSIPATORS
NO SCALE



Know what's below.
Call before you dig.
CALL 3-BUSINESS DAYS IN ADVANCE
BEFORE YOU DIG, GRADE, OR
EXCAVATE FOR THE MARKING OF
UNDERGROUND MEMBER UTILITIES.

PREPARED BY:



DREXEL, BARRELL & CO.
Engineers & Surveyors
3 SOUTH 7TH STREET
COLORADO SPGS, COLORADO 80905
CONTACT: TIM D. McCONNELL, P.E.
(719) 260-0887
BOULDER • COLORADO SPRINGS • GREELEY

CLIENT:

BLACK DIAMOND CABLE
7315 COLE VIEW
COLORADO SPRINGS, CO 80915
CONTACT: RYAN FOSTER
(719) 306-4478

SITE DEVELOPMENT PLAN FOR:

7315 COLE VIEW

EL PASO COUNTY, COLORADO

| ISSUE | DATE |
|---------------|------------|
| INITIAL ISSUE | 10/12/23 |
| LATEST ISSUE | 7/16/24 |
| | |
| | |
| | |
| | |
| | |
| DESIGNED BY: | SBN |
| DRAWN BY: | SBN |
| CHECKED BY: | TDM |
| FILE NAME: | 21813-00FB |



PREPARED UNDER MY DIRECT
SUPERVISION FOR AND ON BEHALF
OF DREXEL, BARRELL & CO.

DRAWING SCALE:
HORIZONTAL: 1"=10'
VERTICAL: N/A

CONCRETE
FOREBAY DETAILS

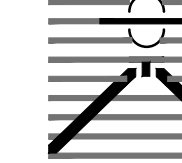

PROJECT NO. 21813-00CSCV
DRAWING NO.

FB

SHEET: 3 OF 4

EPC PROJ. # PPR2344

EPC 8/05/2024

| | |
|---|-------------|
| PREPARED BY: | |
|  | |
| DREXEL, BARRELL & CO. Engineers • Surveyors 3 SOUTH 7TH STREET COLORADO SPRGS, COLORADO 80905 CONTACT: TIM D. MCCONNELL, P.E. (719) 260-0887 BOULDER • COLORADO SPRINGS • GREELEY | |
| CLIENT: | |
| BLACK DIAMOND CABLE | |
| 7315 COLE VIEW COLORADO SPRINGS, CO 80915 CONTACT: RYAN FOSTER (719) 306-4478 | |
| <div style="display: flex; justify-content: space-between; align-items: center;"> <div style="writing-mode: vertical-rl; transform: rotate(180deg);">SITE DEVELOPMENT PLAN FOR:</div> <div style="writing-mode: vertical-rl; transform: rotate(180deg); font-size: 2em; font-weight: bold;">7315 COLE VIEW</div> <div style="writing-mode: vertical-rl; transform: rotate(180deg);">EL PASO COUNTY, COLORADO</div> </div> | |
| ISSUE | DATE |
| INITIAL ISSUE | 10/12/23 |
| LATEST ISSUE | 7/16/24 |
| | |
| | |
| | |
| | |
| | |
| | |
| DESIGNED BY: | SBN |
| DRAWN BY: | SBN |
| CHECKED BY: | TDM |
| FILE NAME: | 21813-00OUT |
|  | |
| PREPARED UNDER MY DIRECT SUPERVISION FOR AND ON BEHALF OF DREXEL, BARRELL & CO. | |
| DRAWING SCALE: HORIZONTAL: N/A VERTICAL: N/A | |
| POND A OUTLET STRUCTURE DETAILS | |
| PROJECT NO. 21813-00CSCV | |
| DRAWING NO. | |
| <div style="font-size: 4em; font-weight: bold; letter-spacing: 0.5em;">OUT</div> | |
| SHEET: 4 OF 4 | |