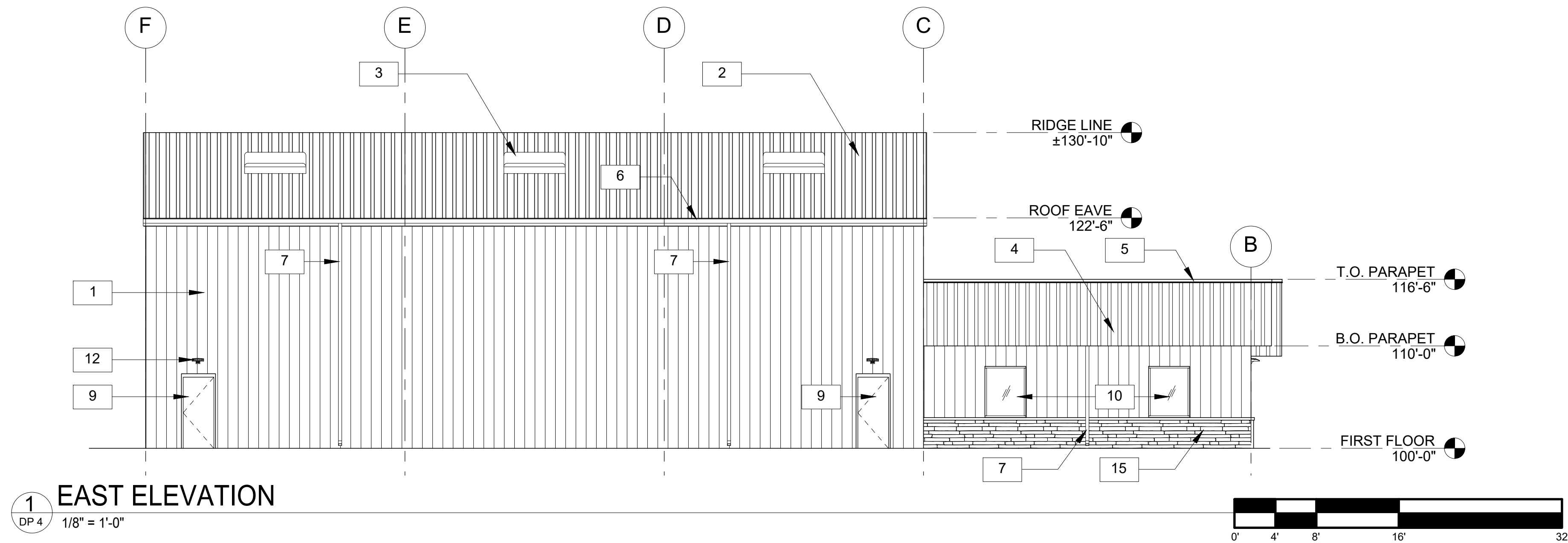
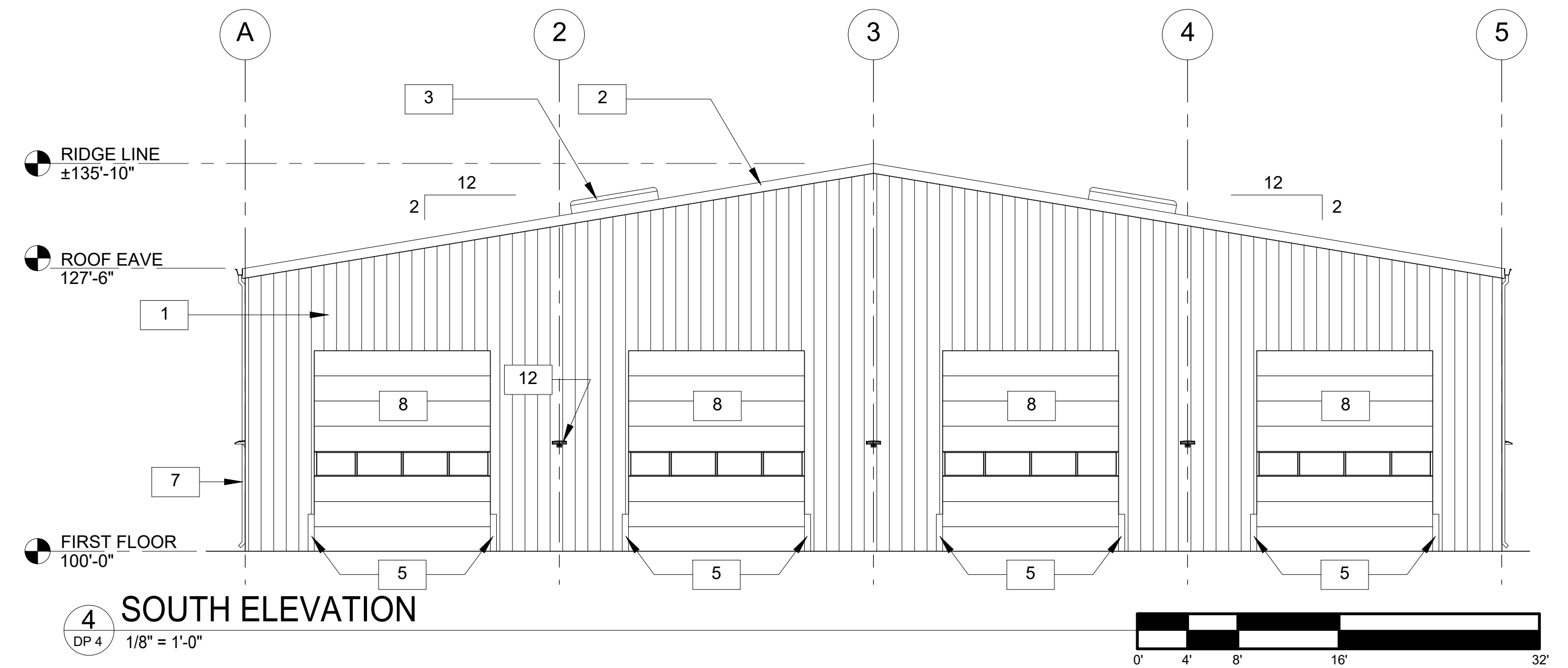
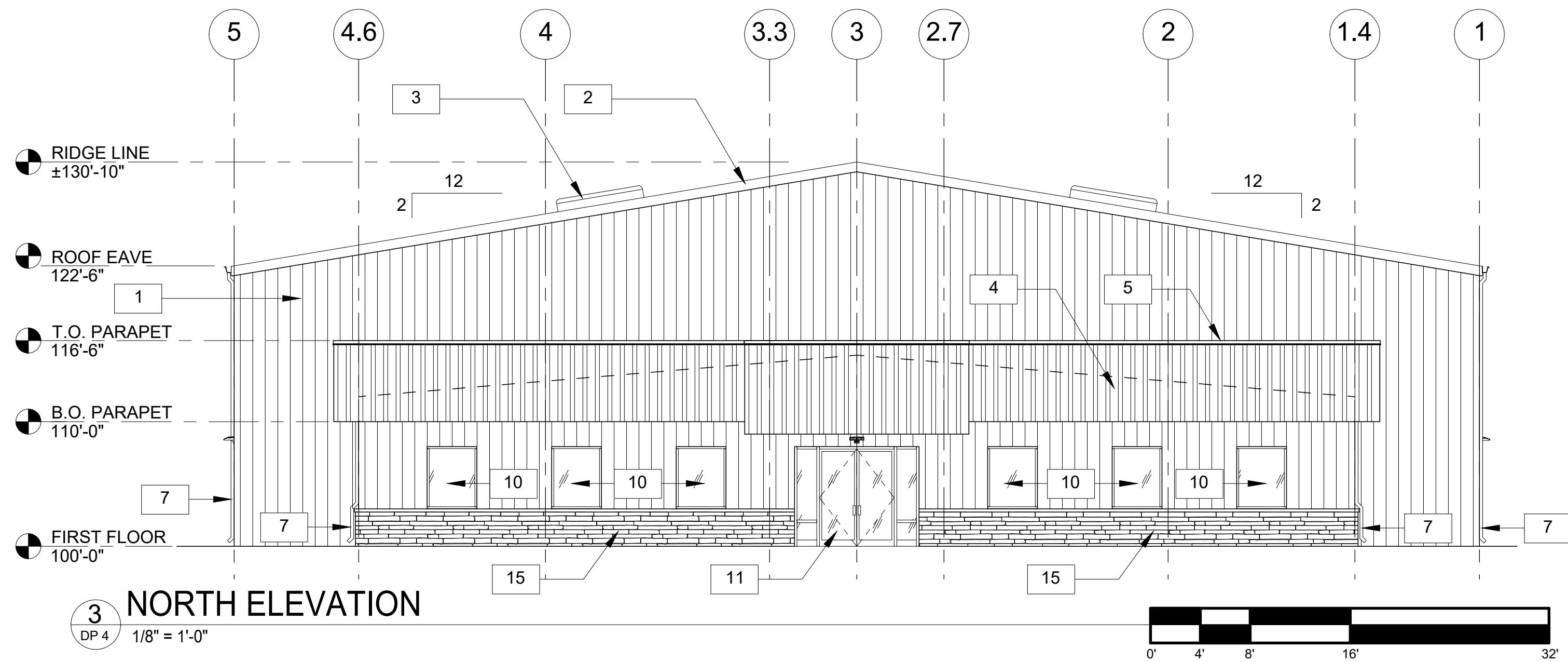
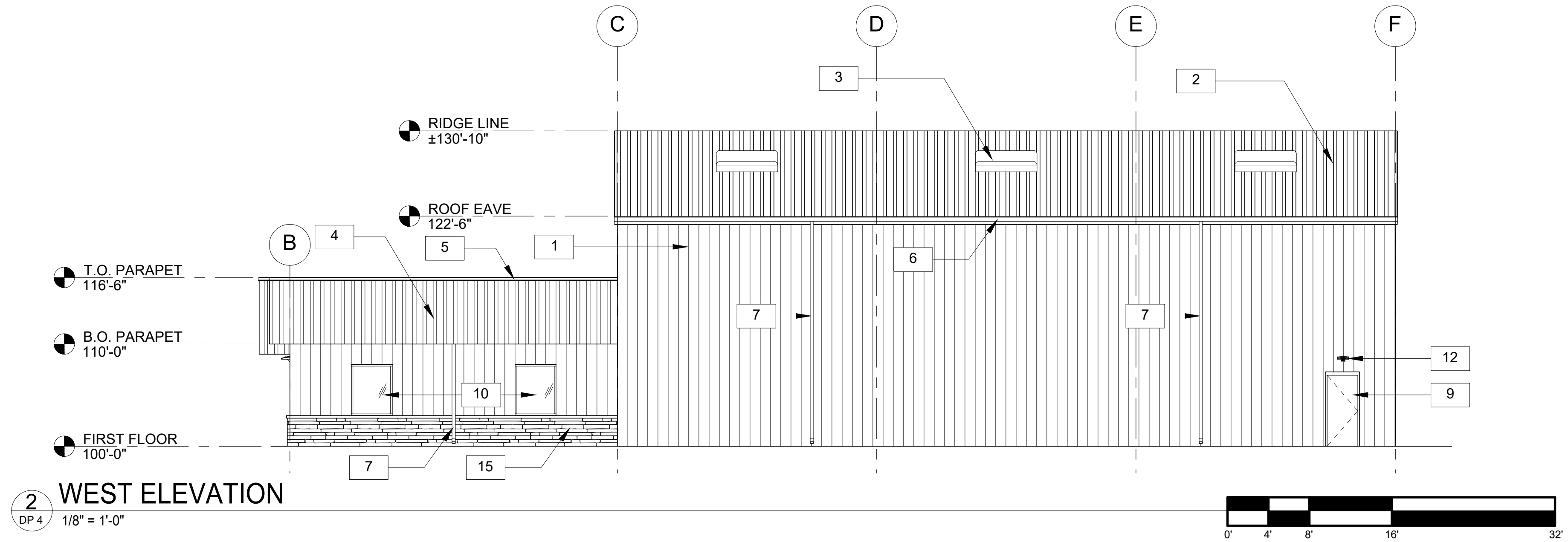


J:\01\_PROJECTS\2021 Projects\2021-1115 Black Diamond Cable\04 AUTOCAD\A-200's Exterior Elevations.dwg, A-300 Ext Elevations, 5/27/2022 11:43:49 AM



- KEY NOTES:
- 1 PRE-FINISHED METAL WALL PANEL
  - 2 PRE-FINISHED STANDING SEAM METAL ROOF PANEL
  - 3 SKYLIGHT, PROVIDED BY METAL BUILDING COMPANY
  - 4 PRE-FINISHED METAL PANEL ROOF PARAPET
  - 5 PRE-FINISHED METAL PARAPET CAP
  - 6 PRE-FINISHED METAL ROOF FLASHING AND GUTTERS
  - 7 PRE-FINISHED METAL OPEN FACED DOWNSPOUT
  - 8 12"x14" HIGH LIFT ROLL-UP DOOR WITH GLASS PANEL
  - 9 HOLLOW METAL SWING DOOR, PROVIDED BY METAL BUILDING COMPANY
  - 10 STOREFRONT WINDOW SYSTEM
  - 11 STOREFRONT ENTRANCE DOOR SYSTEM
  - 12 WALL MOUNTED SECURITY LIGHT FIXTURE
  - 13 SNOW-GUARD SYSTEM
  - 14 CONCRETE FILLED PIPE BOLLARD, PAINT.
  - 15 STONE VENEER WAINSCOT



#	DESCRIPTION	DATE