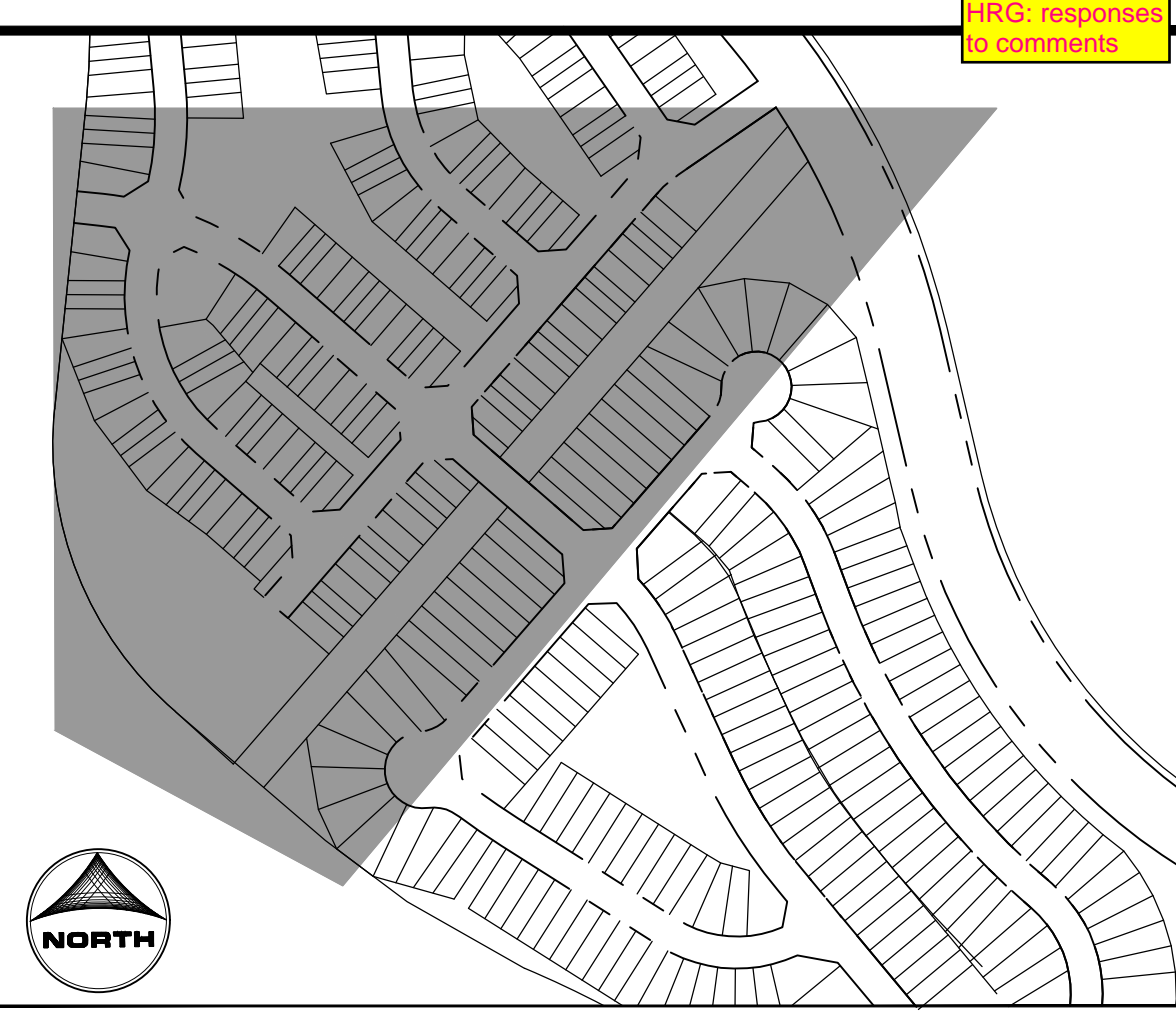
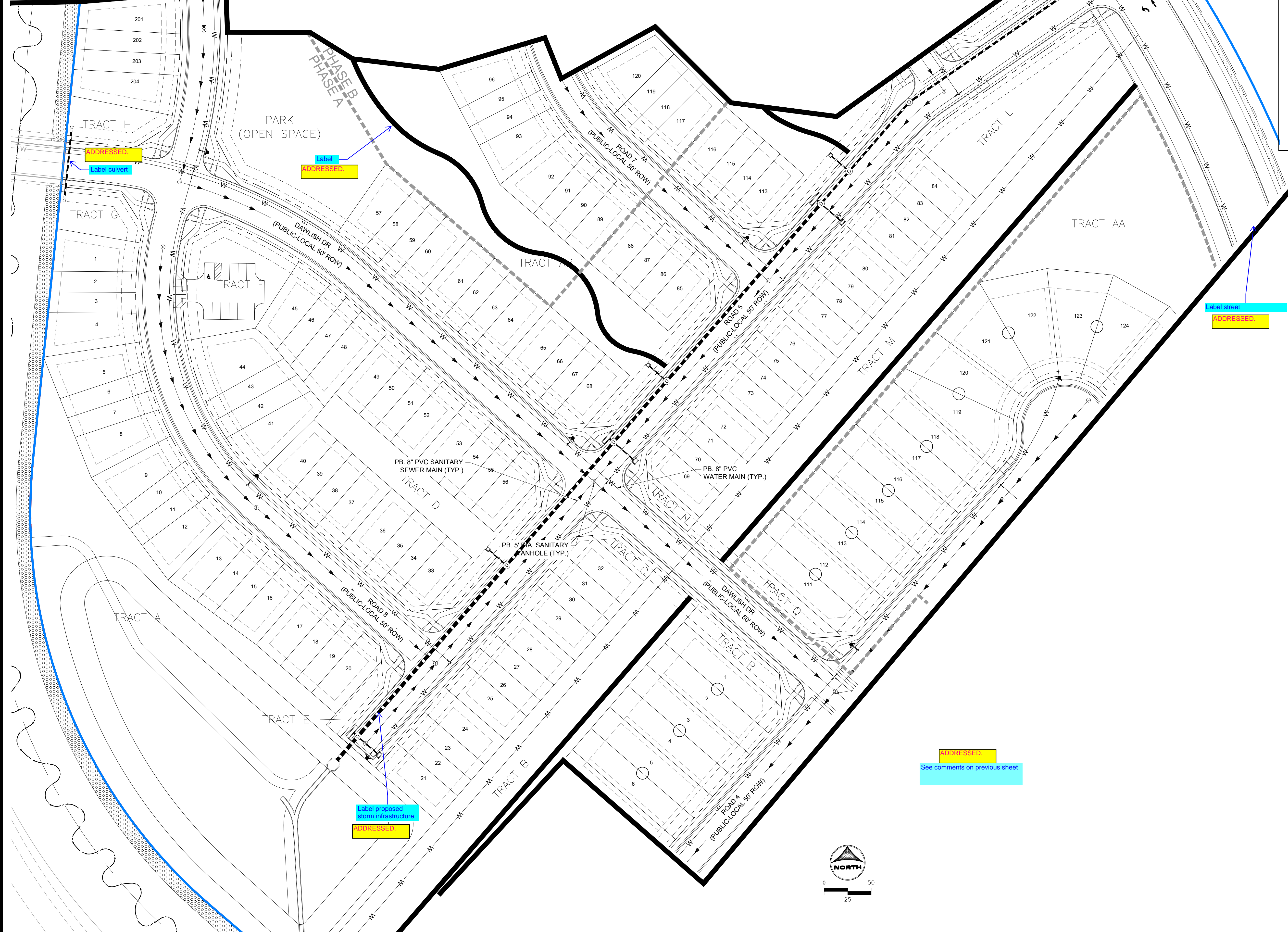


HR GREEN - COLORADO SPRINGS 1975 RESEARCH PKWY SUITE 230 COLORADO SPRINGS CO 80920 PHONE: 719.300.4140 FAX: 713.965.0044

GRANDVIEW RESERVE PHASE 2 PUD DEVELOPMENT PLAN & PRELIMINARY PLAN

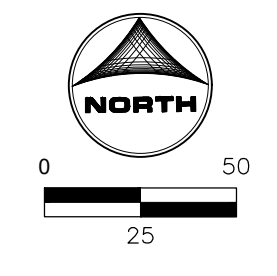
A TRACT OF LAND BEING A PORTION SECTION 21, AND A PORTION OF THE NORTHEAST QUARTER OF SECTION 28, TOWNSHIP 12 SOUTH, RANGE 64 WEST OF THE 6TH/ PRINCIPAL MERIDIAN, EL PASO COUNTY, COLORADO



KEY MAP
SCALE: NTS

LINEWORK LEGEND

	EXISTING	PROPOSED
PROPERTY LINE	---	---
RIGHT OF WAY	---	---
CURB & GUTTER	---	---
OVERHEAD ELECTRIC	ELEC	OE
FIBER OPTIC	FOP	FO
GAS MAIN	GAS	GAS
SANITARY SEWER	SS	SS
STORM DRAIN	---	---
WATER MAIN	---	---
SWALE	---	---
STORM SEWER	EXISTING	PROPOSED
MANHOLE	⊙	⊙
STORM INLET	⊙	⊙
FLARED END SECTION	⊙	⊙
RIPRAP	⊙	⊙
SANITARY SEWER	EXISTING	PROPOSED
CLEAN OUT	⊙	⊙
MANHOLE	⊙	⊙
PLUG	⊙	⊙
WATER	EXISTING	PROPOSED
FIRE HYDRANT	⊙	⊙
FIRE DEPT. CONNECTION	⊙	⊙
GATE VALVE	⊙	⊙
MANHOLE	⊙	⊙
METER	⊙	⊙
TEE	⊙	⊙
REDUCER	⊙	⊙



DRAWN BY: CBM JOB DATE: ---
 APPROVED: KMH JOB NUMBER: 201662
 CAD DATE: 12/19/2023
 CAD FILE: J:\2020\201662\CAD\DWG\CIPUD_Phase_2_662.202\Utility\Utility_Plan_PUD

BAR IS ONE INCH ON OFFICIAL DRAWINGS.
 IF NOT ONE INCH, ADJUST SCALE ACCORDINGLY.

NO.	DATE	BY	REVISION DESCRIPTION

HRGreen
 HR GREEN - COLORADO SPRINGS
 1975 RESEARCH PKWY SUITE 230
 COLORADO SPRINGS CO 80920
 PHONE: 719.300.4140
 FAX: 713.965.0044

GRANDVIEW RESERVE - PHASE 2
 D.R. HORTON
 EL PASO COUNTY, CO



PRELIMINARY UTILITY PLANS
 PRELIMINARY UTILITY PLAN 2 OF 4

SHEET
 UT 03

