

UTILITY CONTACTS

PROJECT CONTACTS:

OWNER/DEVELOPER
D.R. HORTON
9555 S. KINGSTON COURT, SUITE 200
ENGELWOOD, CO 80112
TELE: (303) 488-0061
ATTN: -
EMAIL: -

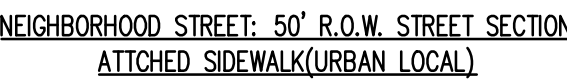
01 - COVER SHEET
02 - PRELIMINARY UTILITY PLAN 1 OF 4
03 - PRELIMINARY UTILITY PLAN 2 OF 4
04 - PRELIMINARY UTILITY PLAN 3 OF 4
05 - PRELIMINARY UTILITY PLAN 4 OF 4

ELECTRIC
MOUNTAIN VIEW ELECTRIC ASSOCIATION
11140 E. WOODMEN RD.
FALCON, CO 80831
TELE: (800) 388-9881
ATTN: GINA PERRY
EMAIL: GINA.P@MVEA.COOP

NATURAL GAS
BLACK HILLS ENERGY
198 COUNTY LINE RD.
PALMER LAKE, CO 80133
TELE: (719) 332-5856
ATTN: BOB SWATEK
EMAIL: BOB.SWATEK@BLACKHILLSCORP.COM

FIRE
FALCON FIRE PROTECTION DISTRICT
7030 OLD MERIDIAN RD.
FALCON, CO 80831
TELE: (719) 495-4050
ATTN: TRENT HARWIG
EMAIL: THARWIG@FALCONFIREPD.ORG

SURVEYOR
EDWARD-JAMES SURVEYING, INC.
926 ELKTON DRIVE
COLORADO SPRINGS, CO 80907
TELE: (719) 576-1216
ATTN: JONATHAN W. TESSIN
EMAIL: -



(ROADS USING THIS SECTION: ROAD 2, ROAD 3, ROAD 4, ROAD 5,
ROAD 6, ROAD 7, ROAD 8, DAWLISH DRIVE)

P.I.U.E = PUBLIC IMPROVEMENTS/UTILITY EASEMENT

ARTERIAL: 100' R.O.W. STREET SECTION
(MINOR ARTERIAL)

(ROADS USING THIS SECTION: REX RD



N. I. S.

P.I.U.E = PUBLIC IMPROVEMENTS/UTILITY EASEMENT

HR GREEN - COLORADO SPRINGS
1975 RESEARCH PKWY SUITE 230
COLORADO SPRINGS CO 80920
PHONE: 719.300.4140
FAX: 713.965.0044

D·R·HORTON
America's Builder

PRELIMINARY UTILITY PLANS

COVER SHEET

SHEET
UT

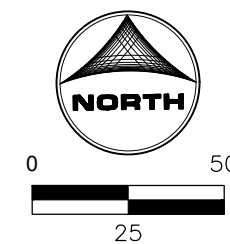
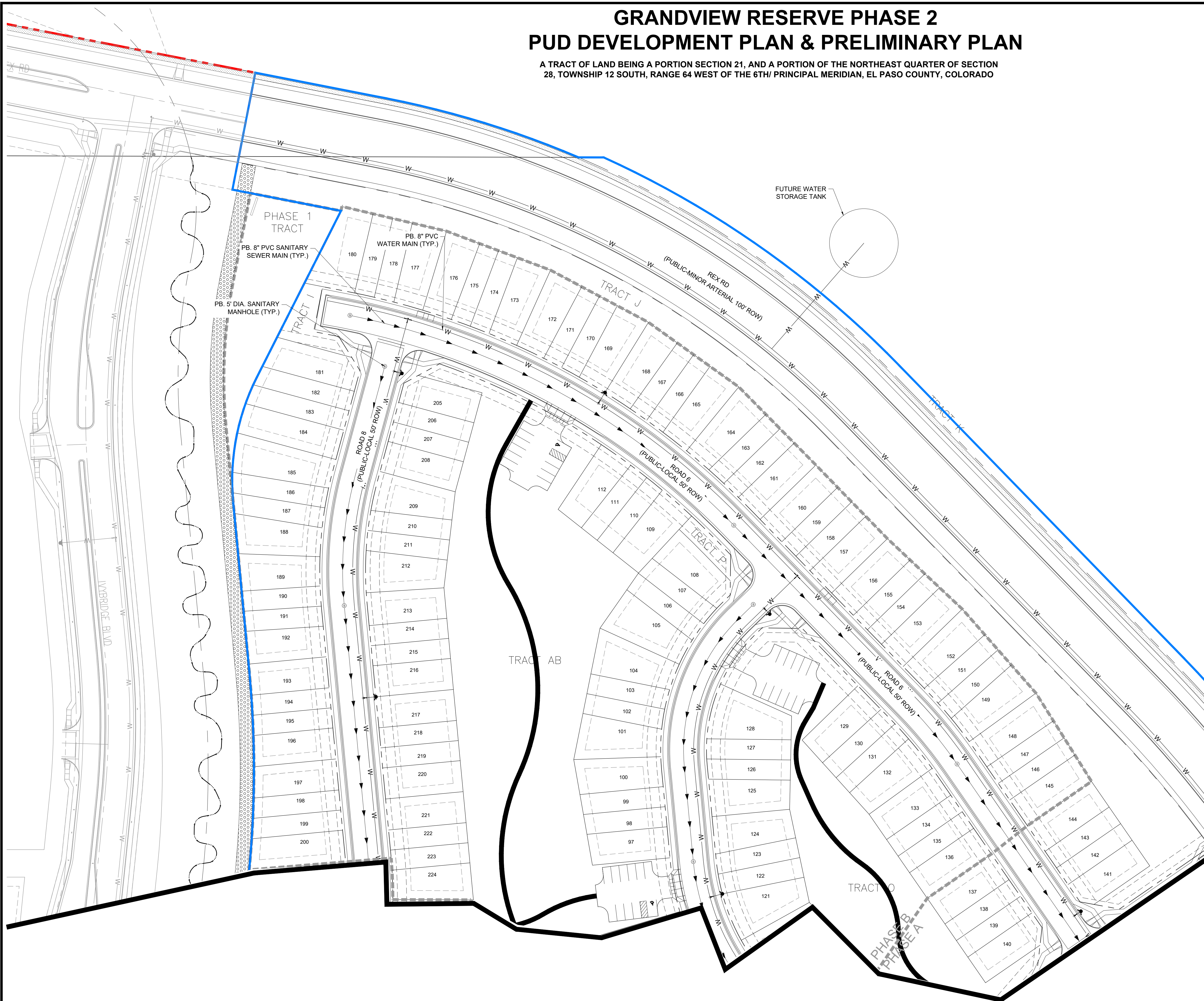
01

A TRACT OF LAND BEING A PORTION SECTION 21, AND A PORTION OF THE NORTHEAST QUARTER OF SECTION 28, TOWNSHIP 12 SOUTH, RANGE 64 WEST OF THE 6TH/ PRINCIPAL MERIDIAN, EL PASO COUNTY, COLORADO

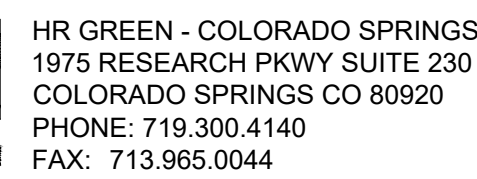
A diagram of a circle with center M . A line segment from the center M to the circumference is labeled r , representing the radius.



KEY MAP
SCALE: NTS



NO.	DATE	BY	REVISION DESCRIPTION



D·R·HORTON
America's Builder

SHEET
UT

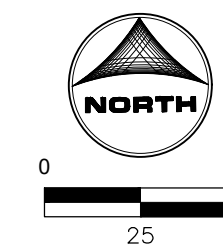
A TRACT OF LAND BEING A PORTION SECTION 21, AND A PORTION OF THE NORTHEAST QUARTER OF SECTION 28, TOWNSHIP 12 SOUTH, RANGE 64 WEST OF THE 6TH/ PRINCIPAL MERIDIAN, EL PASO COUNTY, COLORADO



LINEWORK LEGEND

	EXISTING	PROPOSED
PROPERTY LINE	— — — — —	— — — — —
RIGHT OF WAY	— — — — —	— — — — —
CURB & GUTTER	=====	=====
OVERHEAD ELECTRIC	ELEC	OE
FIBER OPTIC	FOP	FO
GAS MAIN	GAS	GAS
SANITARY SEWER	SS	←
STORM DRAIN	=====	=====
WATER MAIN	W	W
SWALE	— — — — —	← — — — —

	EXISTING	PROPOSED
STORM SEWER		
MANHOLE	①	①
STORM INLET	②	②
FLARED END SECTION	③	③
RIPRAP	④	④
SANITARY SEWER		
CLEAN OUT	⑤	⑤
MANHOLE	⑥	⑥
PLUG	⑦	⑦
WATER		
FIRE HYDRANT	⑧	⑧
FIRE DEPT. CONNECTION	⑨	⑨
GATE VALVE	⑩	⑩
MANHOLE	⑪	⑪
METER	⑫	⑫
TEE	⑬	⑬
REDUCER	⑭	⑭



DRAWN BY: CBM JOB DATE: ---- BAR IS ONE INCH ON
APPROVED: KMH JOB NUMBER: 201662 OFFICIAL DRAWINGS.
0 XXXXXXXXXX 1"
CAD DATE: 12/19/2023 IF NOT ONE INCH,
CAD FILE: J:\2020\201662\CAD\dwgs\CIPUD_Phase_2_662.202\Utility\Utility_Plan_PUD ADJUST SCALE ACCORDINGLY

NO.	DATE	BY	REVISION DESCRIPTION



HR GREEN - COLORADO SPRINGS
1975 RESEARCH PKWY SUITE 230
COLORADO SPRINGS CO 80920
PHONE: 719.300.4140
FAX: 713.965.0044

GRANDVIEW RESERVE - PHASE 2
D.R. HORTON
EL PASO COUNTY, CO



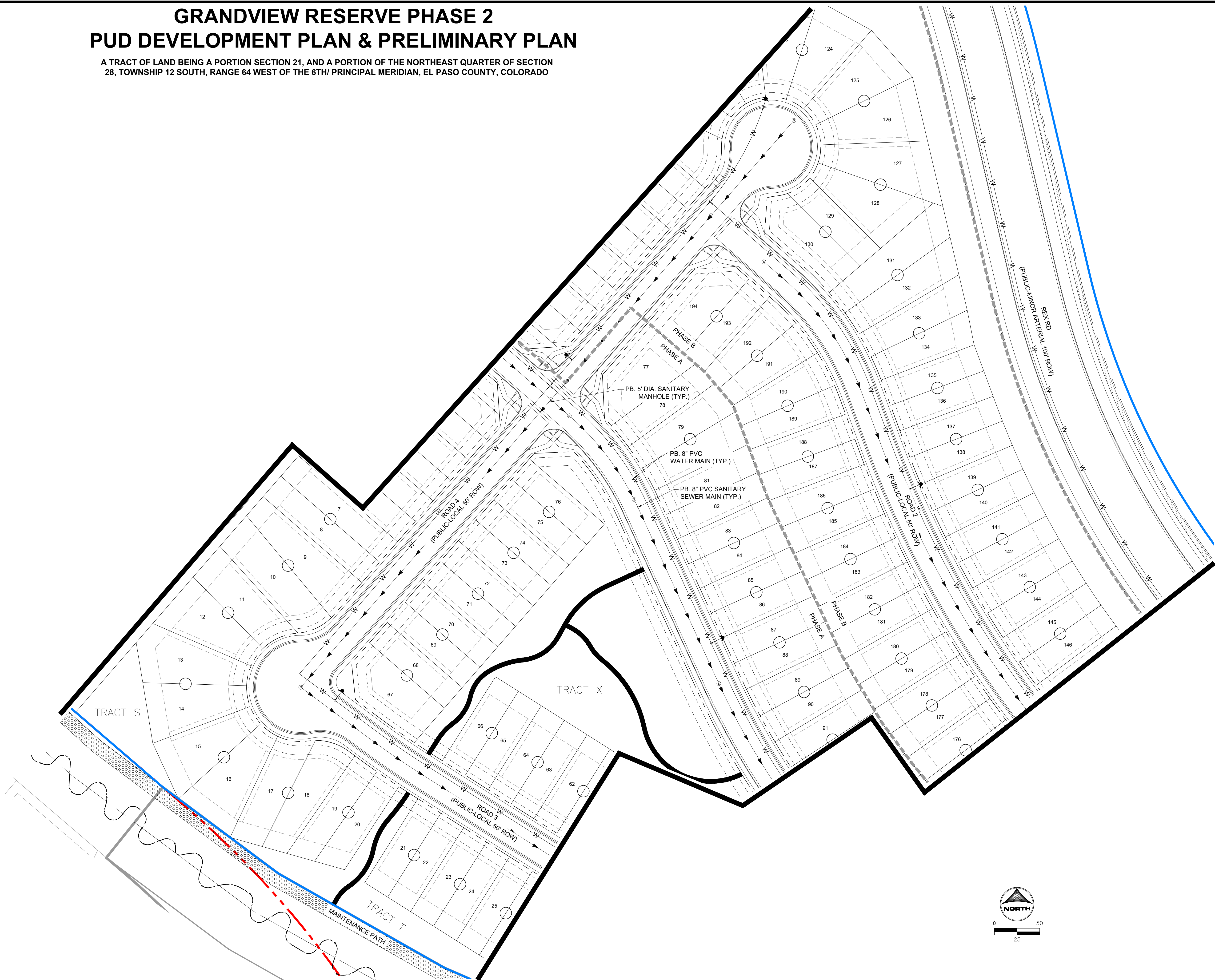
PRELIMINARY UTILITY PLANS
PRELIMINARY UTILITY PLAN 2 OF 4

SHEET
UT

03

GRANDVIEW RESERVE PHASE 2 PUD DEVELOPMENT PLAN & PRELIMINARY PLAN

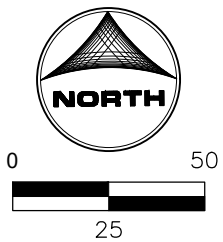
A TRACT OF LAND BEING A PORTION SECTION 21, AND A PORTION OF THE NORTHEAST QUARTER OF SECTION 28, TOWNSHIP 12 SOUTH, RANGE 64 WEST OF THE 6TH/ PRINCIPAL MERIDIAN, EL PASO COUNTY, COLORADO



KEY MAP
SCALE: NTS

LINEWORK LEGEND

	EXISTING	PROPOSED
PROPERTY LINE	---	---
RIGHT OF WAY	---	---
CURB & GUTTER	---	---
OVERHEAD ELECTRIC	ELEC	OE
FIBER OPTIC	FOP	FO
GAS MAIN	GAS	GAS
SANITARY SEWER	SS	SS
STORM DRAIN	---	---
WATER MAIN	---	---
SWALE	---	---
STORM SEWER		
MANHOLE	⊙	⊙
STORM INLET	⊙	⊙
FLARED END SECTION	⊙	⊙
RIPRAP	⊙	⊙
SANITARY SEWER		
CLEAN OUT	⊙	⊙
MANHOLE	⊙	⊙
PLUG	⊙	⊙
WATER		
FIRE HYDRANT	⊙	⊙
FIRE DEPT. CONNECTION	⊙	⊙
GATE VALVE	⊙	⊙
MANHOLE	⊙	⊙
METER	⊙	⊙
TEE	⊙	⊙
REDUCER	⊙	⊙



DRAWN BY: CBM JOB DATE: ----
APPROVED: KMH JOB NUMBER: 201662
CAD DATE: 12/19/2023
CAD FILE: J:\2020\201662\CAD\Drawings\CIPUD_Phase_2_662.202\Utility\Utility_Plan_PUD

BAR IS ONE INCH ON
OFFICIAL DRAWINGS.
0 1" IF NOT ONE INCH,
ADJUST SCALE ACCORDINGLY.

NO.	DATE	BY	REVISION DESCRIPTION



HR GREEN - COLORADO SPRINGS
1975 RESEARCH PKWY SUITE 230
COLORADO SPRINGS CO 80920
PHONE: 719.300.4140
FAX: 713.965.0044

GRANDVIEW RESERVE - PHASE 2
D.R. HORTON
EL PASO COUNTY, CO



PRELIMINARY UTILITY PLANS
PRELIMINARY UTILITY PLAN 3 OF 4

SHEET
UT
04

A TRACT OF LAND BEING A PORTION SECTION 21, AND A PORTION OF THE NORTHEAST QUARTER OF SECTION 28, TOWNSHIP 12 SOUTH, RANGE 64 WEST OF THE 6TH/ PRINCIPAL MERIDIAN, EL PASO COUNTY, COLORADO



KEY MAP
SCALE: NTS

PROPERTY LINE	EXISTING	PROPOSED
RIGHT OF WAY		
CURB & GUTTER		
OVERHEAD ELECTRIC		
FIBER OPTIC		
GAS MAIN		
SANITARY SEWER		
STORM DRAIN		
WATER MAIN		
SWALE		
STORM SEWER	EXISTING	PROPOSED
MANHOLE		
STORM INLET		
FLARED END SECTION		
RIPRAP		
SANITARY SEWER		
CLEAN OUT		
MANHOLE		
PLUG		
WATER		
FIRE HYDRANT		
FIRE DEPT. CONNECTION		
GATE VALVE		
MANHOLE		
METER		
TEE		
REDUCER		

NO.	DATE	BY	REVISION DESCRIPTION



HR GREEN - COLORADO SPRINGS
1975 RESEARCH PKWY SUITE 230
COLORADO SPRINGS CO 80920
PHONE: 719.300.4140
FAX: 713.965.0044

GRANDVIEW RESERVE - PHASE 2
D.R. HORTON
EL PASO COUNTY, CO



PRELIMINARY UTILITY PLANS
PRELIMINARY UTILITY PLAN 4 OF 4

SHEET
UT

5