

-65' L.D. LINE

APD

55000-00-129

APD

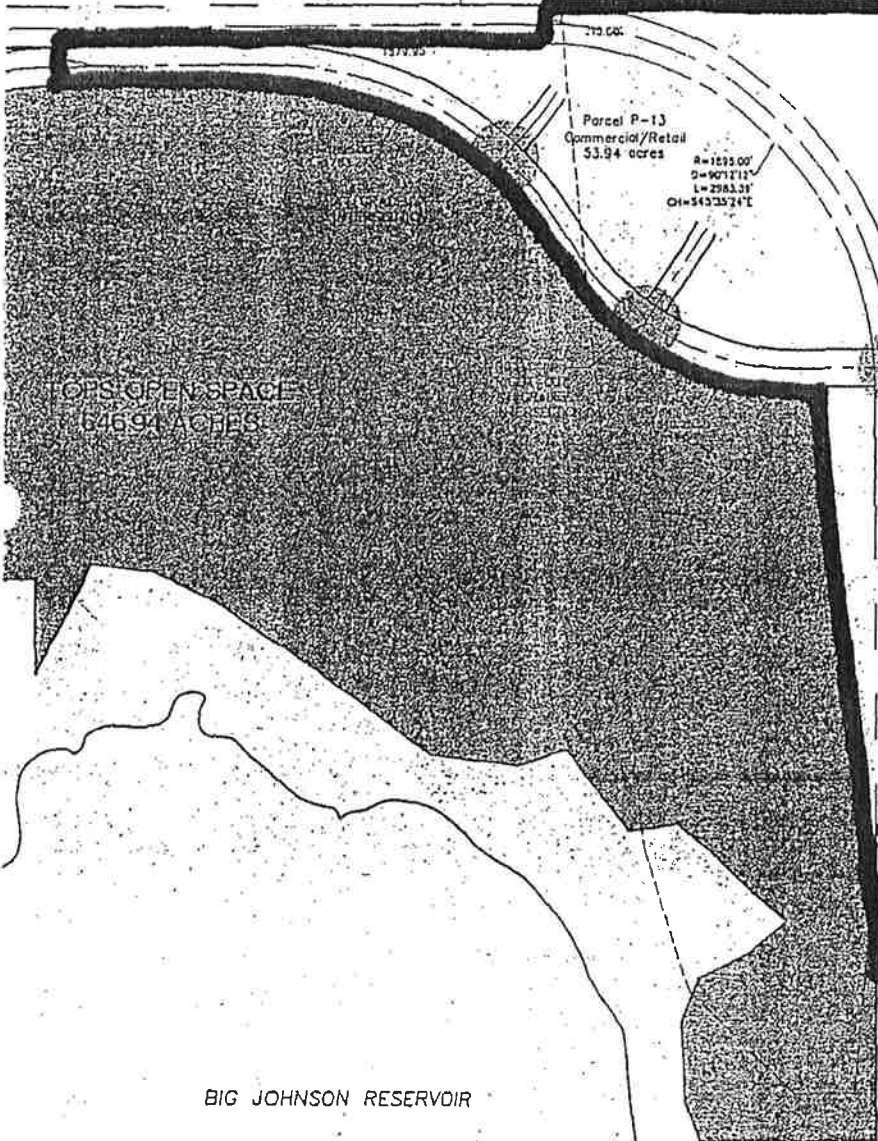
55000-00-134

AT GRADE SIGNALIZED INTERSECTION

Parcel P-15
Commercial/Retail

WATERVIEW II METROPOLITAN DISTRICT

446.32 ACRES



TOPS OPEN SPACE
646.94 ACRES

BIG JOHNSON RESERVOIR

Parcel P-13
Commercial/Retail
53.94 acres
R=1035.00'
D=9072.12'
L=2983.38'
CI=5432524'E

BRADLEY ROAD

AT GRADE SIGNALIZED INTERSECTION
(FUTURE GRADE SEPARATED INTERSECTION
R.O.W. REQUIREMENTS TO BE DETERMINED
AT PLATTING)

Parcel P-17
Commercial/
Office/
Industrial
51.08 Acres

Parcel P-18
Commercial/Retail
110.26 Acres

Parcel P-19
Commercial/Retail
30.33 Acres
8 D.U./AC.

DIAMOND INTERCHANGE
R.O.W. RESERVATION AND 6
R.O.W. RESERVATION ARE
SUBJECT TO APPROVAL BY
CDOT AND EL PASO COUNTY
DOT.

DIAMOND INTERCHANGE
R.O.W. RESERVATION PER
COLORADO STATE BOARD
OF LAND COMMISSIONER
SECURITY SITE
SKETCHPLAN (1989)