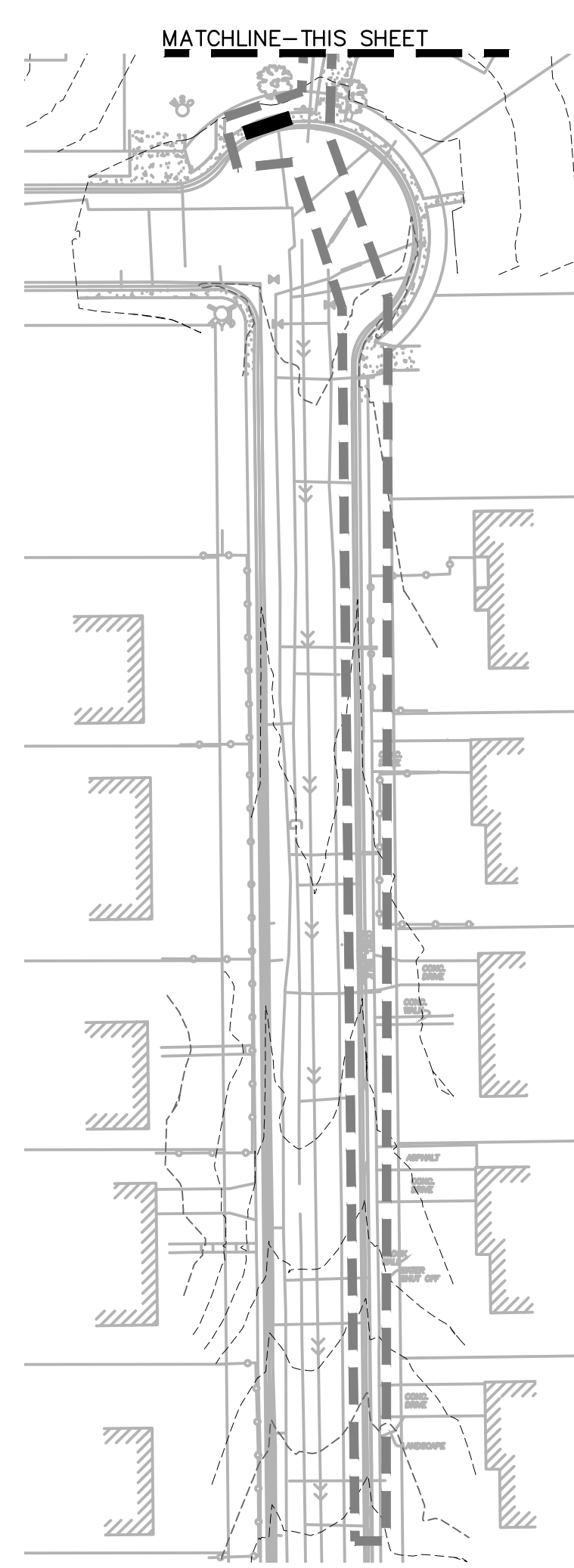
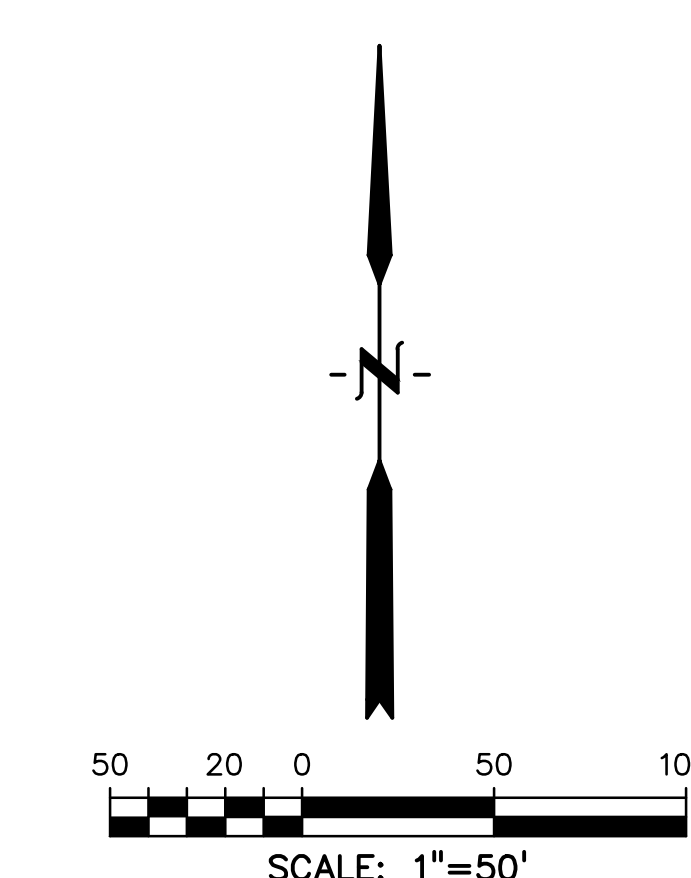


Show proposed diversion ditches/swales to convey runoff to TSB in initial condition.

Provide details of temporary sediment basin including riser pipe diameter and perforation sizing, number of rows of holes, required volume, location of outlet pipe and spillway, and tributary area to the sediment basin. And provide contours for sediment basin (if different from the EDB contours).

Assign a name/number to the pond and then update all submitted text and drawings accordingly with consistent labeling throughout (example: "Pond A" or "Pond 1").

GEC Checklist Item O. Public Offsite Grading. Label as offsite grading.



**NOTES:**

- REFER TO LANDSCAPING PLANS FOR ONSITE VEGETATION
- REFER TO SWMP FOR NON-STRUCTURAL CONTROL MEASURES.
- ALL DISTURBED AREAS SHALL BE SEEDED WITHIN 30 DAYS OF DISTURBANCE.

**LEGEND**

PROPOSED INTERMEDIATE CONTOUR . . . . . 5522	ROCK SOCKS . . . . . (RS)	EROSION CONTROL BLANKET . . . . . (ECB)
PROPOSED INDEX CONTOUR . . . . . 5520	CONCRETE WASHOUT AREA . . . . . (CWA)	SEEDING/MULCHING . . . . . (SM)
EX. INTERMEDIATE CONTOUR . . . . . 5364	VEHICLE TRACKING CONTROL . . . . . (VTC)	
EX. INDEX CONTOUR . . . . . 5365	SILT FENCE . . . . . (SF)	
DIRECTION OF FLOW . . . . . →	TEMPORARY SEDIMENT BASIN . . . . . (TSB)	
HIGH POINT . . . . . HP	CHECK DAM . . . . . (CD)	
LOW POINT . . . . . LP	STOCKPILE PROTECTION . . . . . (SP)	
PROPOSED INLET . . . . . —	STABILIZED STAGING AREA . . . . . (SSA)	
PROPOSED MANHOLE . . . . . ●		
LIMIT OF DISTURBANCE . . . . . - - - - -		
INLET PROTECTION . . . . . (IP)		

**NOTES:**

GEC Checklist Item "e" - Show property lines on plans and Legend.

GEC Checklist Items H and M. If "limits of disturbance" and "construction boundary" are the same, change to "limits of construction/disturbance" or otherwise show as separate line types for each on the legend and figure.

PREPARED BY:

DREXEL, BARRELL & CO.  
Engineers • Surveyors  
3 SOUTH 7TH STREET  
COLORADO SPGS, COLORADO 80905  
CONTACT: TIM D. MCCONNELL, P.E.  
(719)260-0887  
BOULDER • COLORADO SPRINGS • GREELEY

CLIENT:

MIDCO INVESTMENTS, LLC

P.O. BOX 60069  
COLORADO SPRINGS, CO 80960  
CONTACT: ROBERT C. IRWIN  
(719) 475-7474

CONSTRUCTION DOCUMENTS FOR:

# HAVEN VALLEY

(LETA DR.) BRADLEY RD/ALTURAS DR.  
SECURITY, EL PASO COUNTY, COLORADO

ISSUE	DATE
INITIAL ISSUE	3/15/22
LATEST ISSUE	7/27/23

DESIGNED BY: TDM  
DRAWN BY: SBN  
CHECKED BY: TDM  
FILE NAME: 21085-03C01

PREPARED UNDER MY DIRECT SUPERVISION FOR AND ON BEHALF OF DREXEL, BARRELL & CO.

DRAWING SCALE:  
HORIZONTAL: 1" = 50'  
VERTICAL: N/A

INITIAL GRADING AND EROSION CONTROL PLAN

PROJECT NO. 21085-03CSCV  
DRAWING NO.

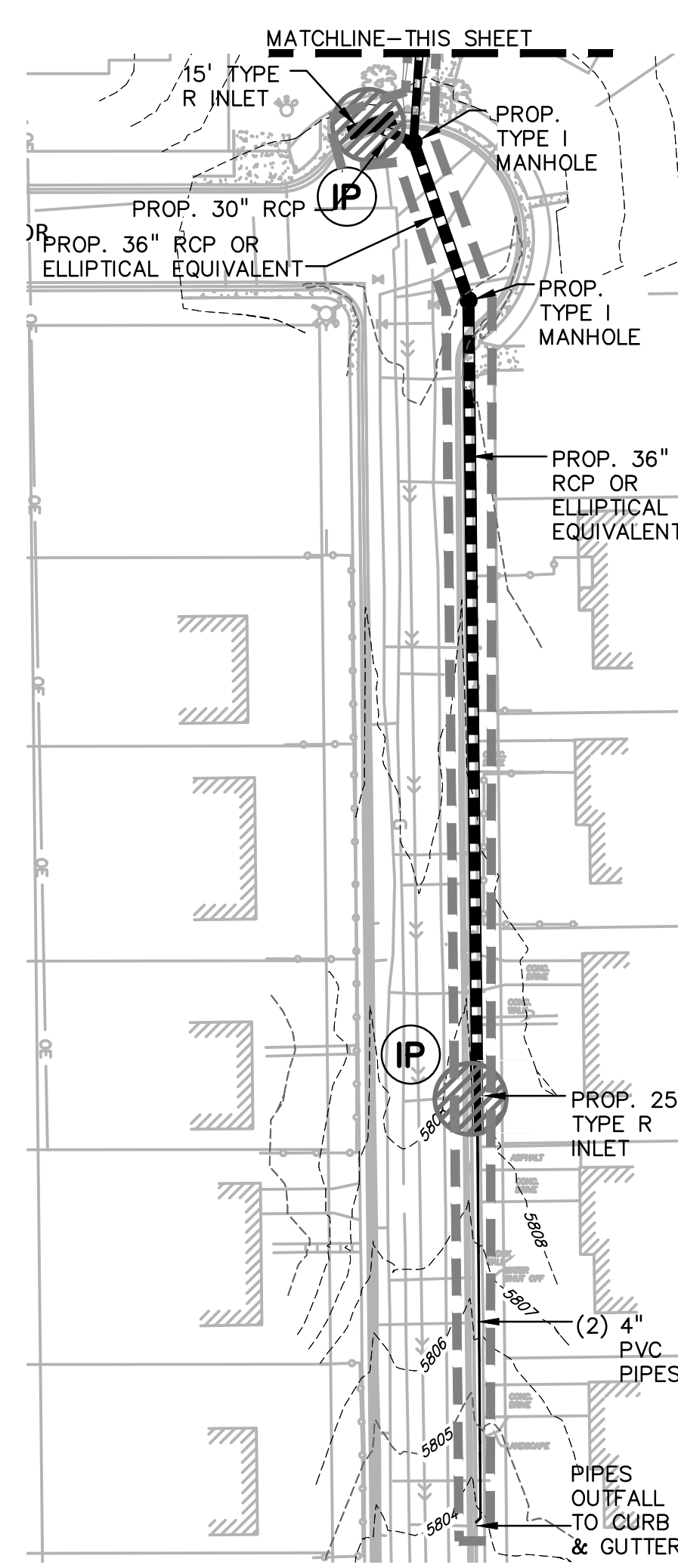
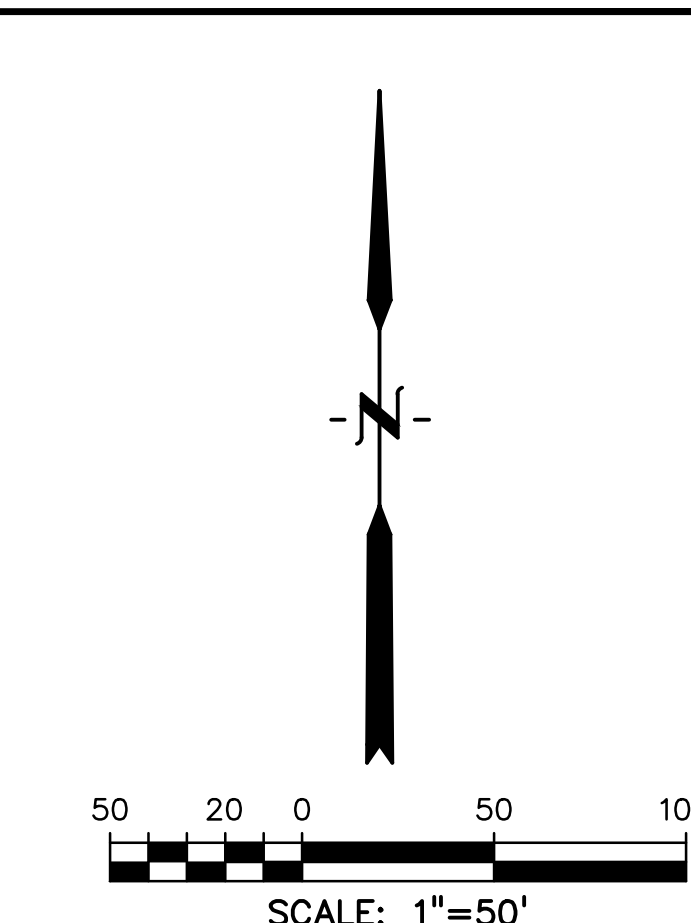
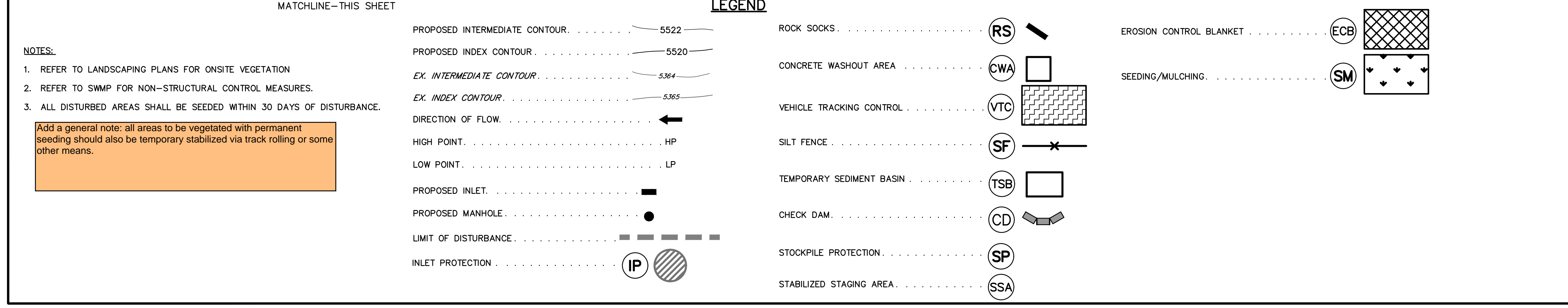
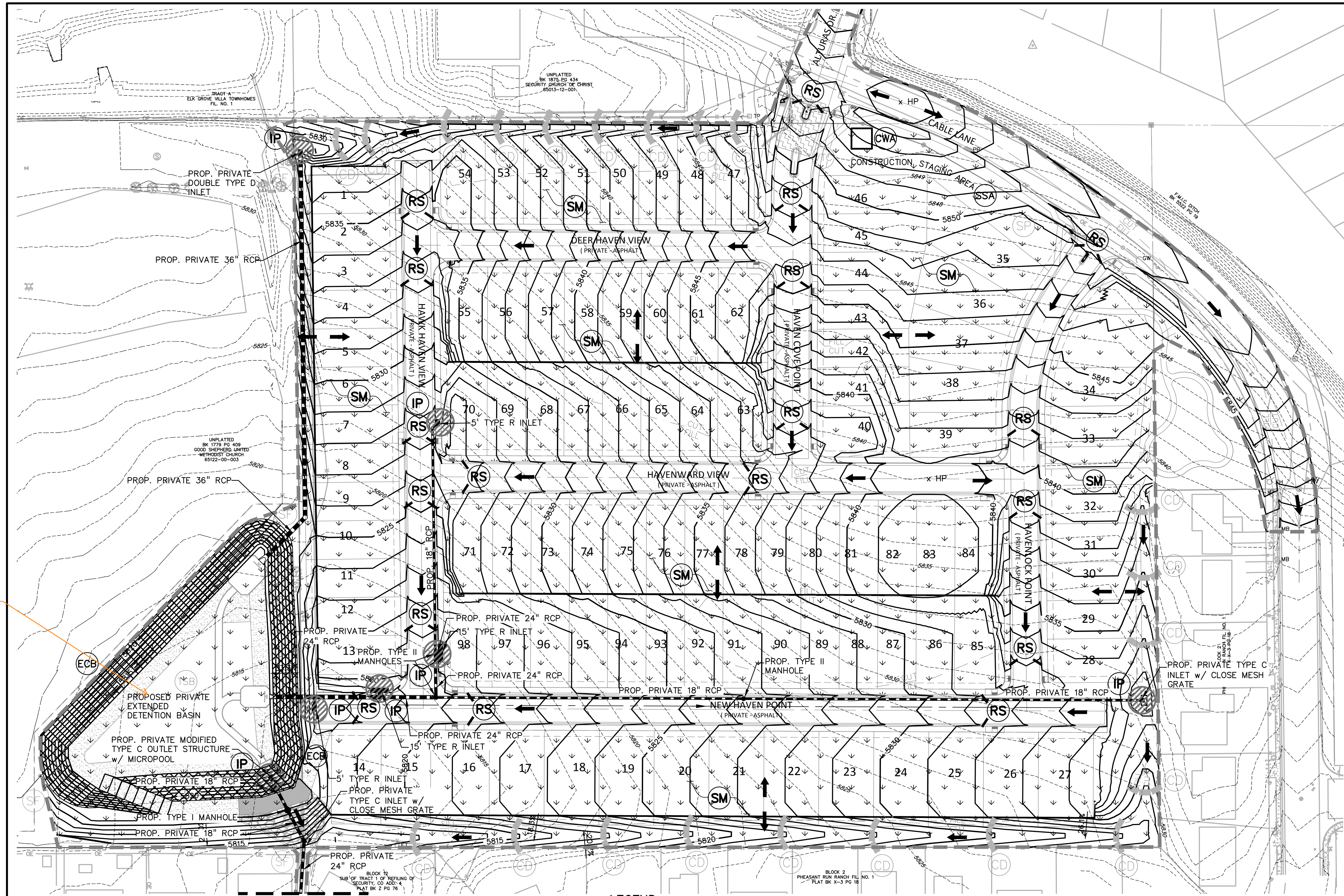
# EC01

SHEET: 40 OF 47

**811 Know what's below. Call before you dig.**

CALL 3-BUSINESS DAYS IN ADVANCE BEFORE YOU DIG, GRADE, OR EXCAVATE FOR THE MARKING OF UNDERGROUND MEMBER UTILITIES.





**PREPARED BY:**

**DREXEL, BARRELL & CO.**  
Engineers • Surveyors  
3 SOUTH 7TH STREET  
COLORADO SPGS, COLORADO 80905  
CONTACT: TIM D. MCCONNELL, P.E.  
(719)260-0887  
BOULDER • COLORADO SPRINGS • GREELEY

**CLIENT:**

MIDCO INVESTMENTS, LLC

P.O. BOX 60069  
COLORADO SPRINGS, CO 80960  
CONTACT: ROBERT C. IRWIN  
(719) 475-7474

**CONSTRUCTION DOCUMENTS FOR:**

# HAVEN VALLEY

(LETA DR.) BRADLEY RD/ALTURAS DR.  
SECURITY, EL PASO COUNTY, COLORADO

ISSUE	DATE
INITIAL ISSUE	3/15/22
LATEST ISSUE	7/27/23

DESIGNED BY: TDM  
DRAWN BY: GES  
CHECKED BY: TDM  
FILE NAME: 21085-03EC02

PREPARED UNDER MY DIRECT SUPERVISION FOR AND ON BEHALF OF DREXEL, BARRELL & CO.

DRAWING SCALE:  
HORIZONTAL: 1" = 50'  
VERTICAL: N/A

**INTERIM GEC PLAN**

PROJECT NO. 21085-03CSCV  
DRAWING NO.

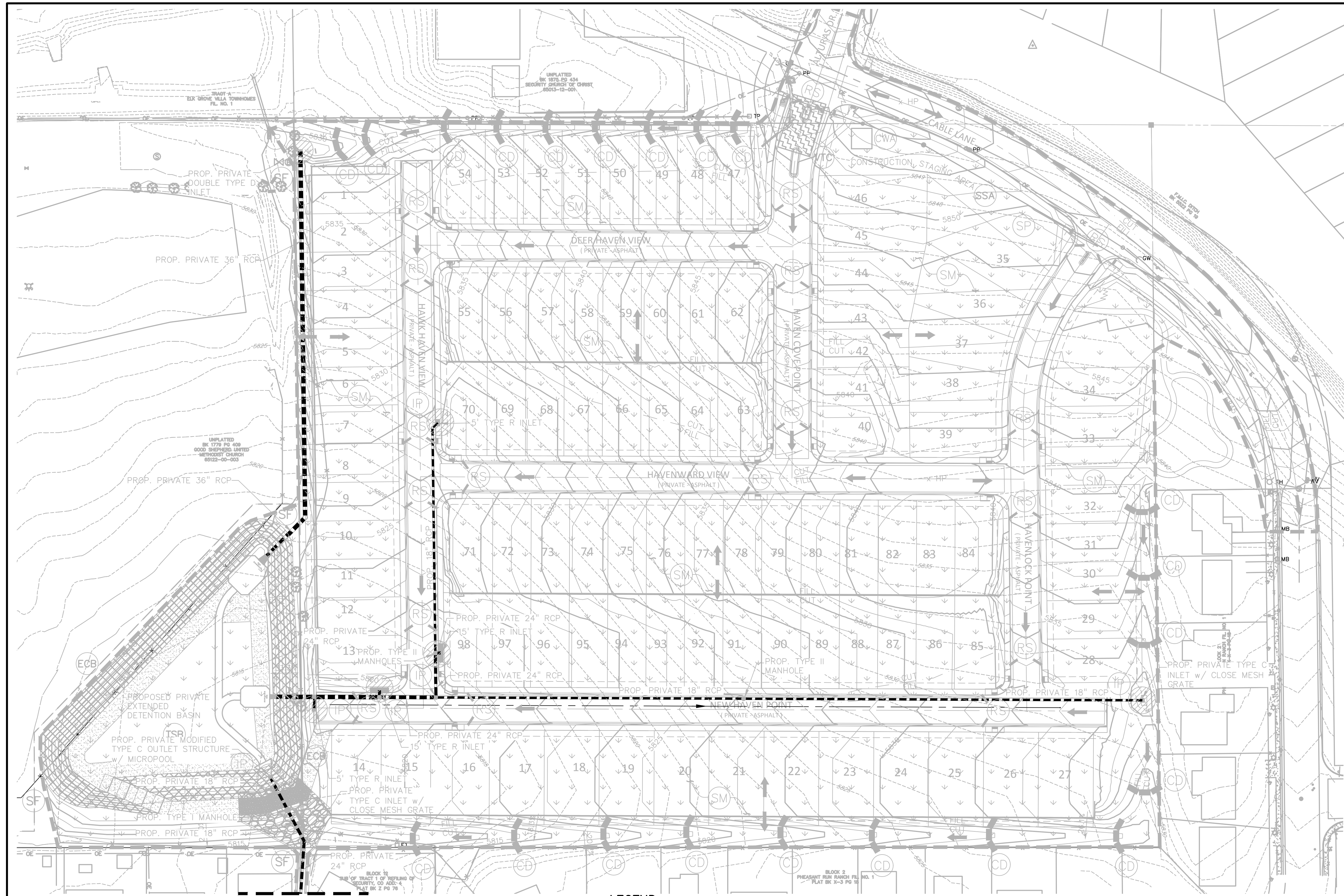
# EC02

SHEET: 41 OF 47

Assign a name/number to the pond and then update all submitted text and drawings accordingly with consistent labeling throughout (example: "Pond A" or "Pond 1").

11/20/24 03:20:00 PM 21085-03CSCV.dwg 1/27/2023 10:45:34 AM





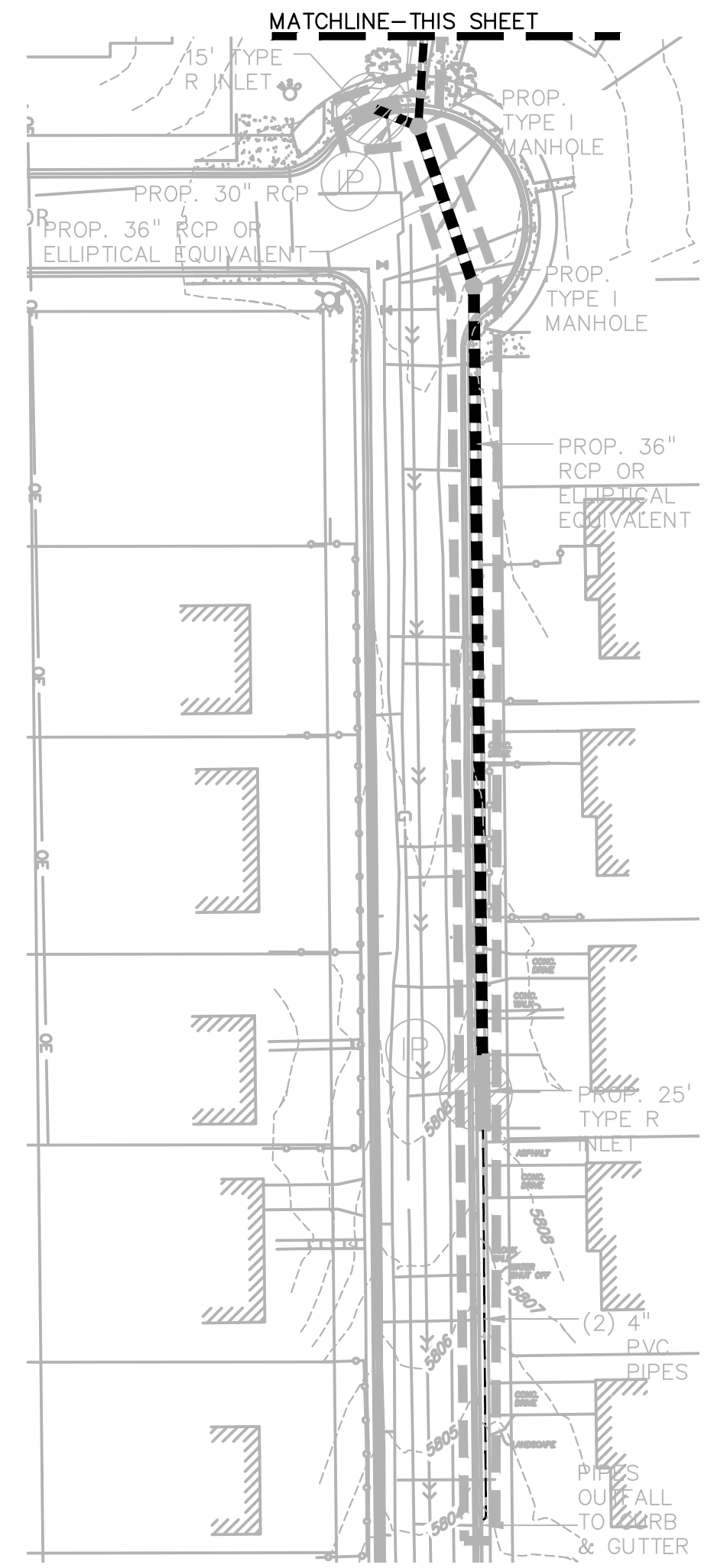
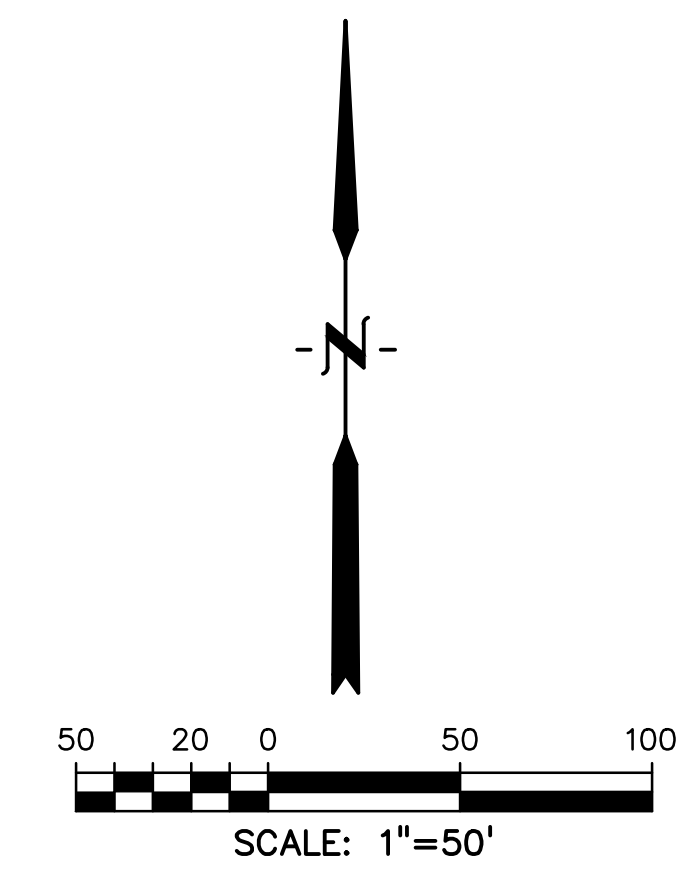
**NOTES:**  
 1. REFER TO LANDSCAPING PLANS FOR ONSITE VEGETATION  
 2. REFER TO SWMP FOR NON-STRUCTURAL CONTROL MEASURES.  
 3. ALL DISTURBED AREAS SHALL BE SEEDED WITHIN 30 DAYS OF DISTURBANCE.

**LEGEND**

PROPOSED INTERMEDIATE CONTOUR . . . . .	5522
PROPOSED INDEX CONTOUR . . . . .	5520
EX. INTERMEDIATE CONTOUR . . . . .	5364
EX. INDEX CONTOUR . . . . .	5365
DIRECTION OF FLOW . . . . .	←
HIGH POINT . . . . .	HP
LOW POINT . . . . .	LP
PROPOSED INLET . . . . .	—
PROPOSED MANHOLE . . . . .	●
LIMIT OF DISTURBANCE . . . . .	- - - - -
INLET PROTECTION . . . . .	IP

ROCK SOCKS . . . . .	RS
CONCRETE WASHOUT AREA . . . . .	CWA
VEHICLE TRACKING CONTROL . . . . .	VTC
SILT FENCE . . . . .	SF
TEMPORARY SEDIMENT BASIN . . . . .	TSB
CHECK DAM . . . . .	CD
STOCKPILE PROTECTION . . . . .	SP
STABILIZED STAGING AREA . . . . .	SSA

EROSION CONTROL BLANKET . . . . .	ECB
SEEDING/MULCHING . . . . .	SM



PREPARED BY:



CLIENT:

MIDCO INVESTMENTS, LLC

P.O. BOX 60069  
 COLORADO SPRINGS, CO 80960  
 CONTACT: ROBERT C. IRWIN  
 (719) 475-7474

CONSTRUCTION DOCUMENTS FOR:

# HAVEN VALLEY

(LETA DR.) BRADLEY RD/ALTURAS DR.  
 SECURITY, EL PASO COUNTY, COLORADO

ISSUE	DATE
INITIAL ISSUE	3/15/22
LATEST ISSUE	7/27/23

DESIGNED BY:	TDM
DRAWN BY:	SBN
CHECKED BY:	TDM
FILE NAME:	21085-03EC03

PREPARED UNDER MY DIRECT SUPERVISION FOR AND ON BEHALF OF DREXEL, BARRELL & CO.  
 DRAWING SCALE:  
 HORIZONTAL: 1" = 50'  
 VERTICAL: N/A

FINAL/VERTICAL  
 GEC PLAN

PROJECT NO. 21085-03CSCV  
 DRAWING NO.

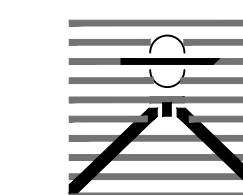
# EC03

SHEET: 42 OF 47





PREPARED BY:



DREXEL, BARRELL & CO.  
Engineers-Surveyors  
3 SOUTH 7TH STREET  
COLORADO SPRINGS, COLORADO 80905  
CONTACT: TIM D. MCCONNELL, P.E.  
(719)260-0887  
BOULDER • COLORADO SPRINGS • GREELEY

CLIENT:

MIDCO INVESTMENTS, LLC

P.O. BOX 60069  
COLORADO SPRINGS, CO 80960  
CONTACT: ROBERT C. IRWIN  
(719) 475-7474

CONSTRUCTION DOCUMENTS FOR:

HAVEN VALLEY  
(LETA DR.) BRADLEY RD/ALTURAS DR.  
SECURITY, EL PASO COUNTY, COLORADO

ISSUE	DATE
INITIAL ISSUE	3/15/22
LATEST ISSUE	7/27/23

DESIGNED BY: SBN  
 DRAWN BY: SBN  
 CHECKED BY: TDM  
 FILE NAME: 21085-03ECDT

PREPARED UNDER MY DIRECT SUPERVISION FOR AND ON BEHALF OF DREXEL, BARRELL & CO.

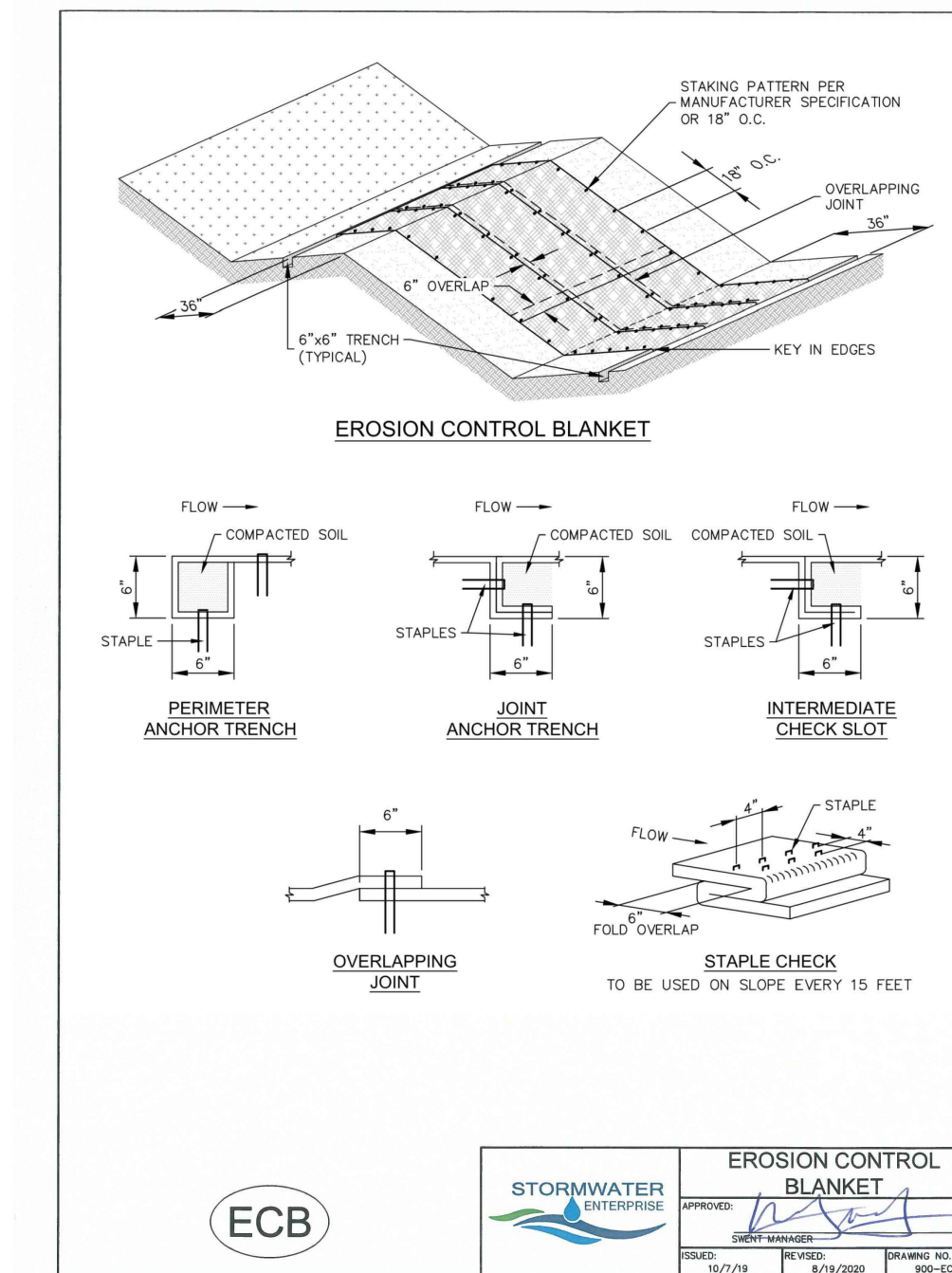
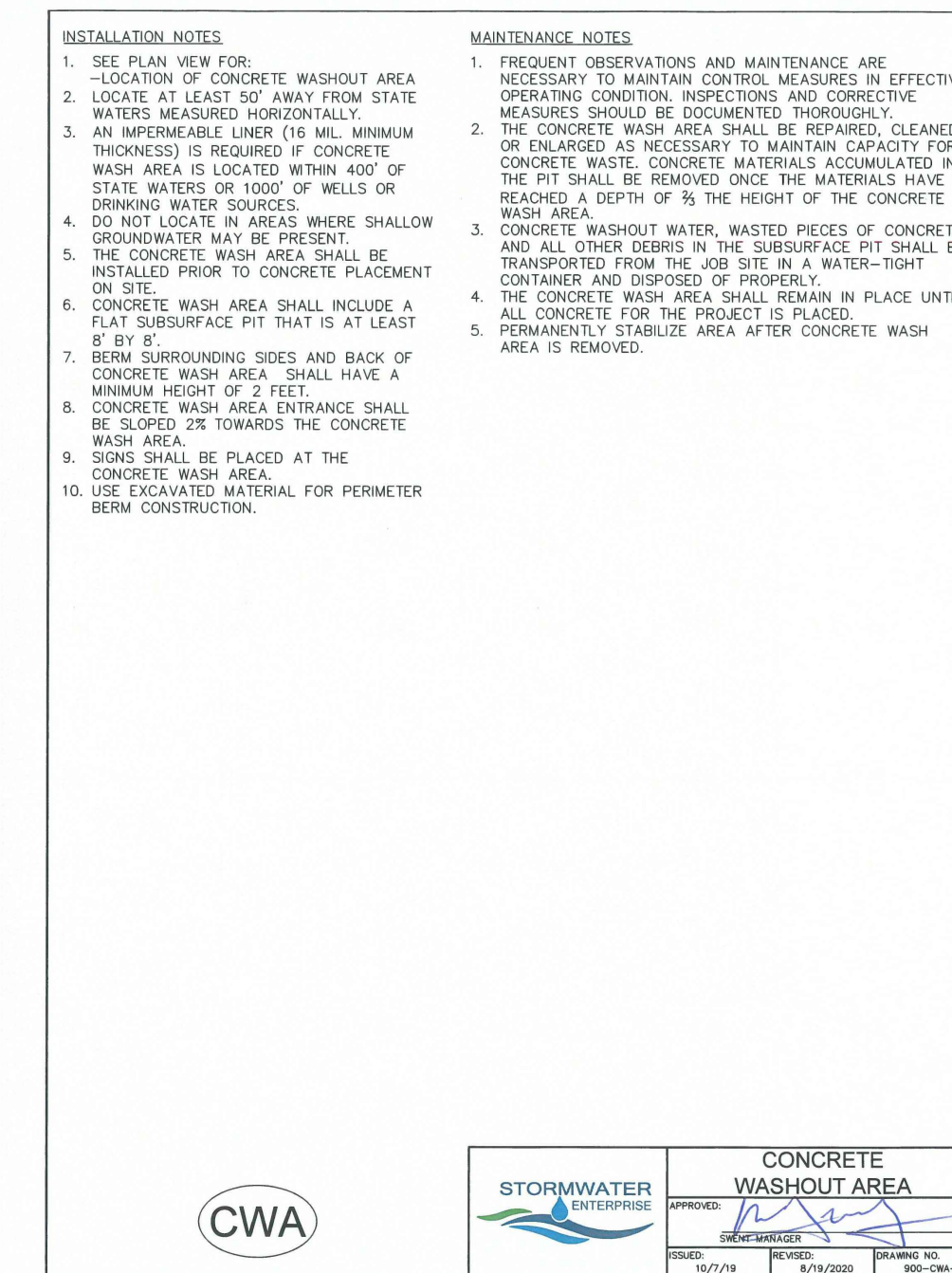
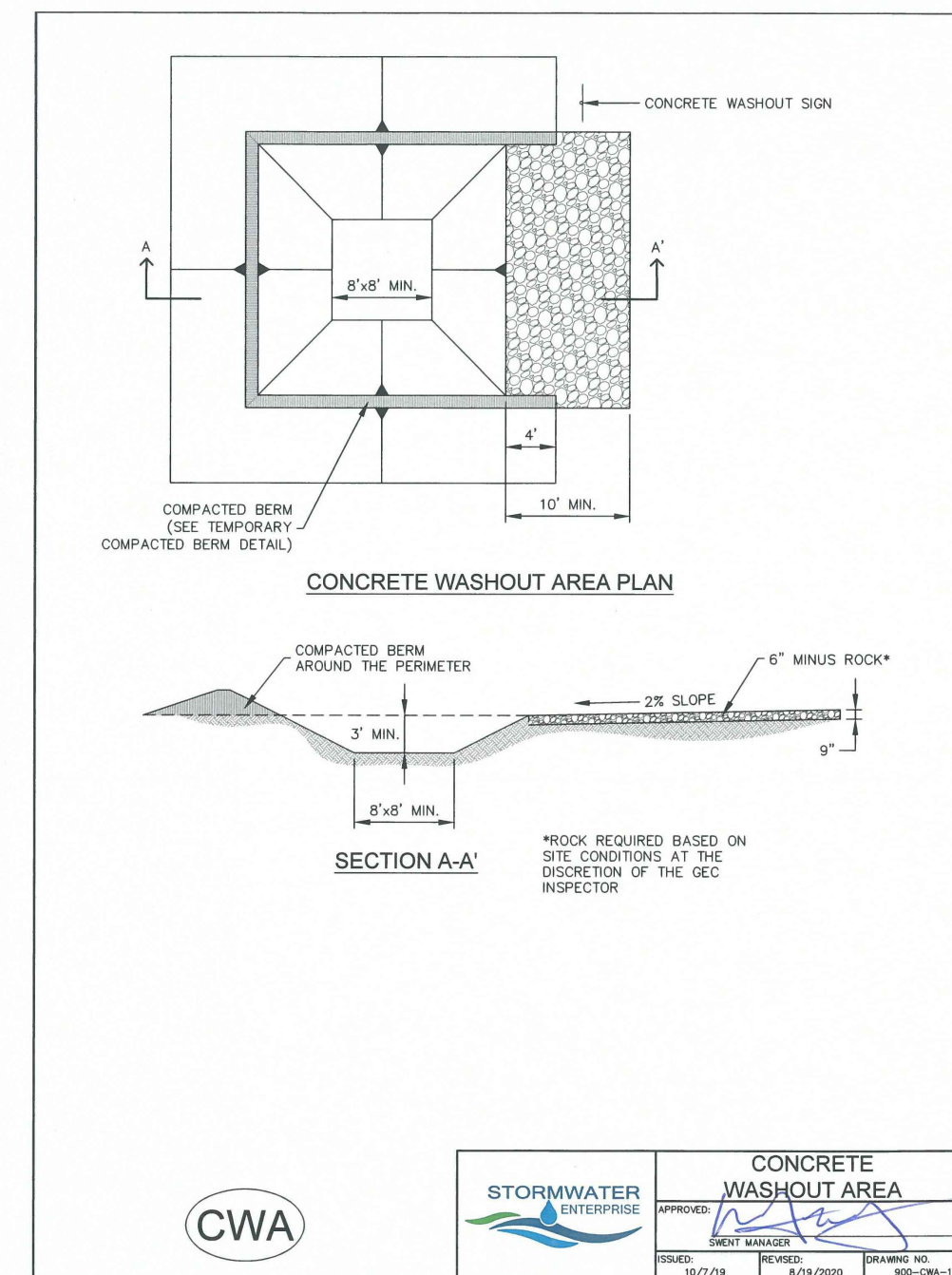
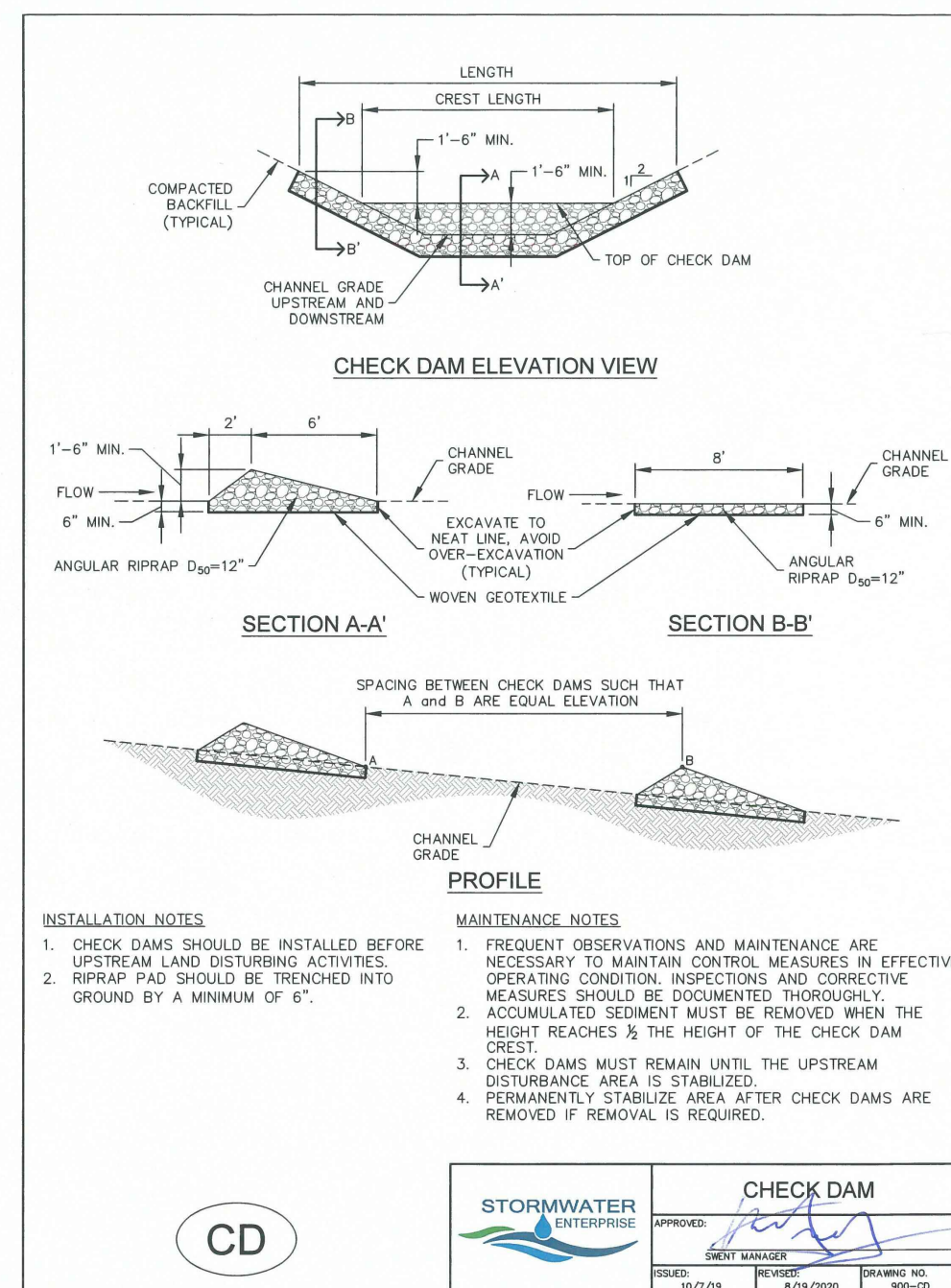
DRAWING SCALE:  
HORIZONTAL: N/A  
VERTICAL: N/A

EROSION CONTROL DETAILS

PROJECT NO. 21085-03CSCV  
DRAWING NO.

ECDT

SHEET: 43 OF 47



**TABLE ECB-1, EROSION CONTROL BLANKET MATERIAL SPECIFICATIONS**

TYPE	COCONUT CONTENT	STRAW CONTENT	EXCELSOR CONTENT	RECOMMENDED NETTING
STRAW	-	100%	-	DOUBLE/NATURAL
STRAW/COCONUT	30% MIN.	70% MAX.	-	DOUBLE/NATURAL
COCONUT	100%	-	-	DOUBLE/NATURAL
EXCELSOR	-	-	100%	DOUBLE/NATURAL

**ECB**

STORMWATER ENTERPRISE  
EROSION CONTROL BLANKET  
DESIGNED BY: SBN  
DRAWN BY: SBN  
CHECKED BY: TDM  
DATE: 3/15/22

