

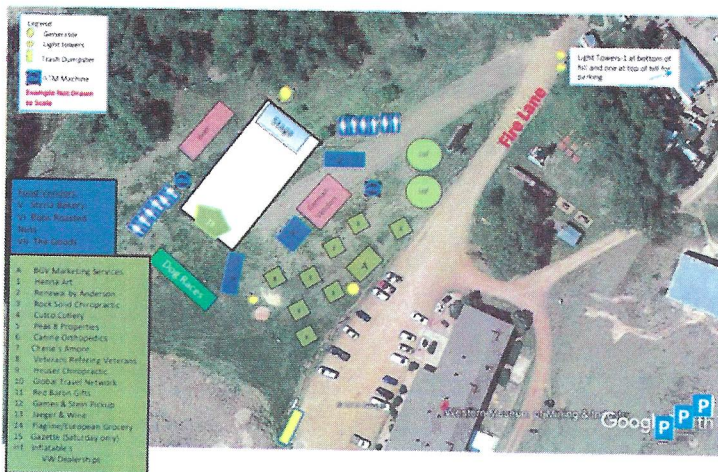
**Western Museum of Mining & Industry (WMMI) 501.c.3**

**Sign Plan (and lighting plan)**

Our site development plan does not contain any new signs nor lighting. We have sufficient signs and lights for our needs. Therefore, we have no new signs planned at this time. We have one main sign at our entrance on Northgate Blvd. We have one sign on the Southwest corner of the property. Other signs are usually temporary and may be used for events to assist with parking, traffic flow and management. These signs are usually on campus property, not a public "right of way". Here is a photo of our entry sign (approximately 4ft x 6ft):



In regard to lighting, most of our events occur during daylight hours and therefore do not require additional lighting. Most of our buildings have minimal external lighting, similar to a residence, and have been in place for years. When outdoor evening events occur and need additional lighting, then temporary lighting is placed near the center of the campus, well away from neighbors. Shielded lights are employed (usually rental units) to illuminate the proper areas. Here is an example of an event lighting layout with the yellow spots as light locations:



**Please specifically state that all events will be operated in compliance with the lighting section of the LDC.**