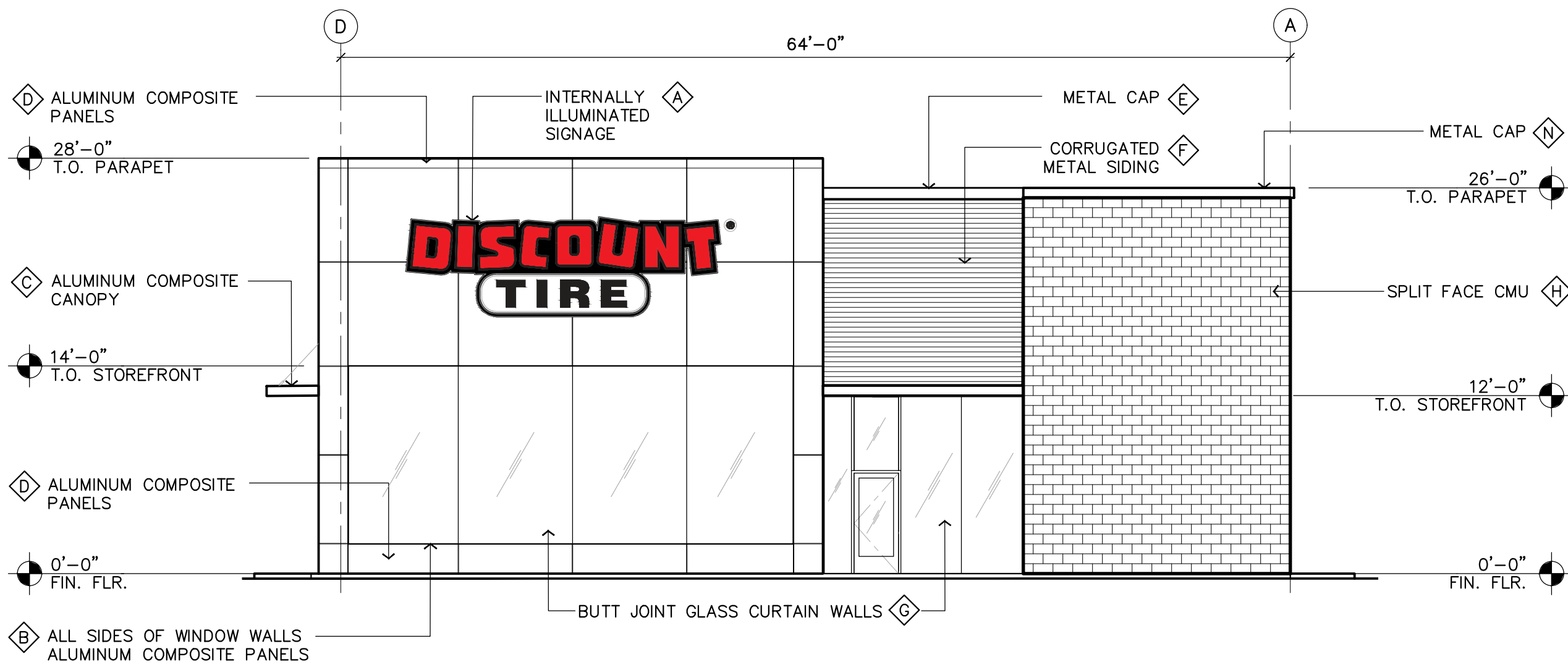


**NORTH ELEVATION**

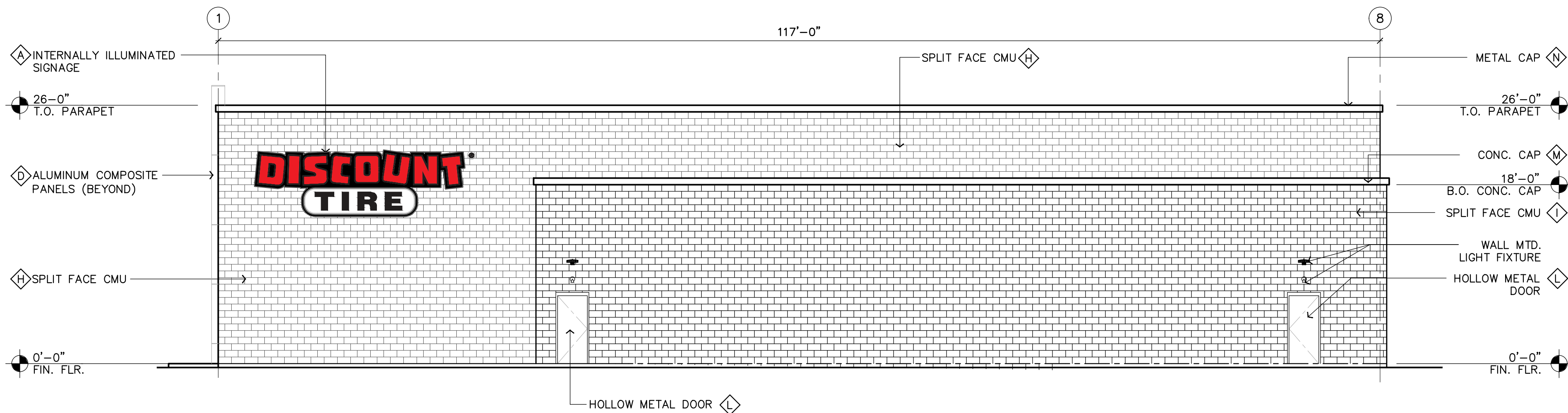
SCALE: 1/8" = 1'-0"



**SOUTH ELEVATION**

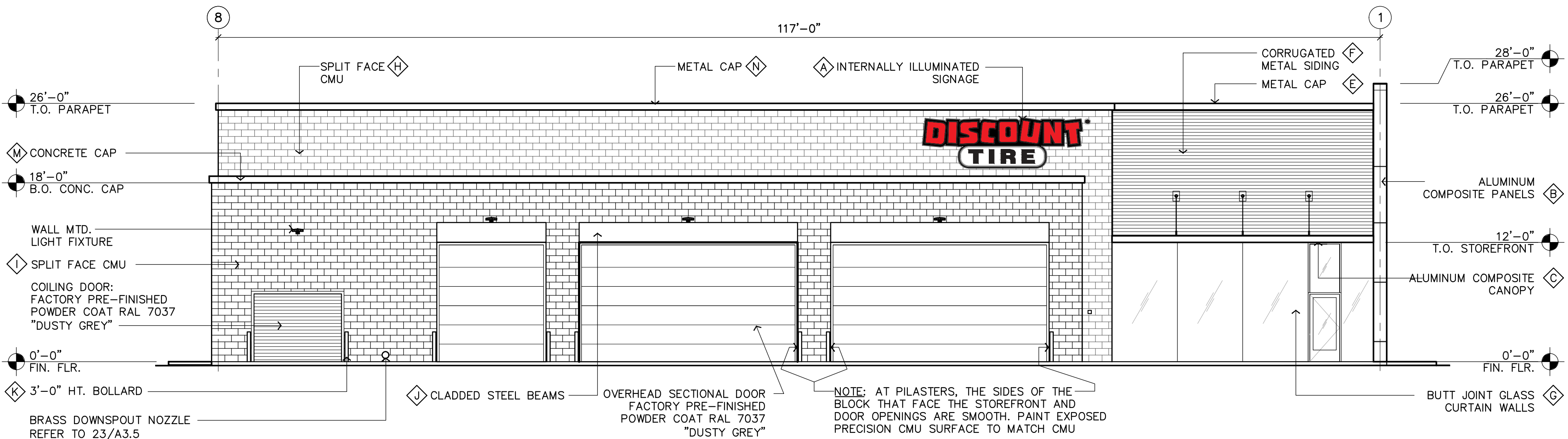
SCALE: 1/8" = 1'-0"

FINISH LEGEND	
	3-DIMENSIONAL INTERNALLY ILLUMINATED SIGNAGE (UNDER SEPARATE PERMIT)
	ALUMINUM COMPOSITE PANELS: ALUCOBOND "MATTE PATRIOT RED"
	ALUMINUM CLADDED CANOPY: ALUCOBOND "MATTE BRUSHED STAINLESS"
	ALUMINUM COMPOSITE PANELS: ALUCOBOND "MATTE BONE WHITE"
	8" METAL CAP BY ATAS INTERNATIONAL INC. COATED: "BLACK"
	CORRUGATED METAL PANEL BY ATAS INTERNATIONAL INC. COATED: "BLACK"
	ANODIZED ALUMINUM STOREFRONT/CURTAIN WALL - CLEAR ANODIZED FINISH ARCADIA AFG601T
	INTEGRAL COLOR SPLIT FACE CMU TO MATCH BASALITE 720WR.
	INTEGRAL COLOR SPLIT FACE CMU TO MATCH BASALITE 800WR.
	CLADDED STEEL BEAMS - COLOR TO MATCH POWDER COAT SW 7019 "GAUNTLET GREY".
	STEEL BOLLARDS - COLOR TO MATCH POWDER COAT SW 7019 "GAUNTLET GREY".
	HOLLOW METAL DOORS-PAINTED TO MATCH BASALITE 800WR.
	CONCRETE CAP-COLOR TO MATCH BASALITE 800WR.
	METAL CAP - COLOR TO MATCH BASALITE 720WR.



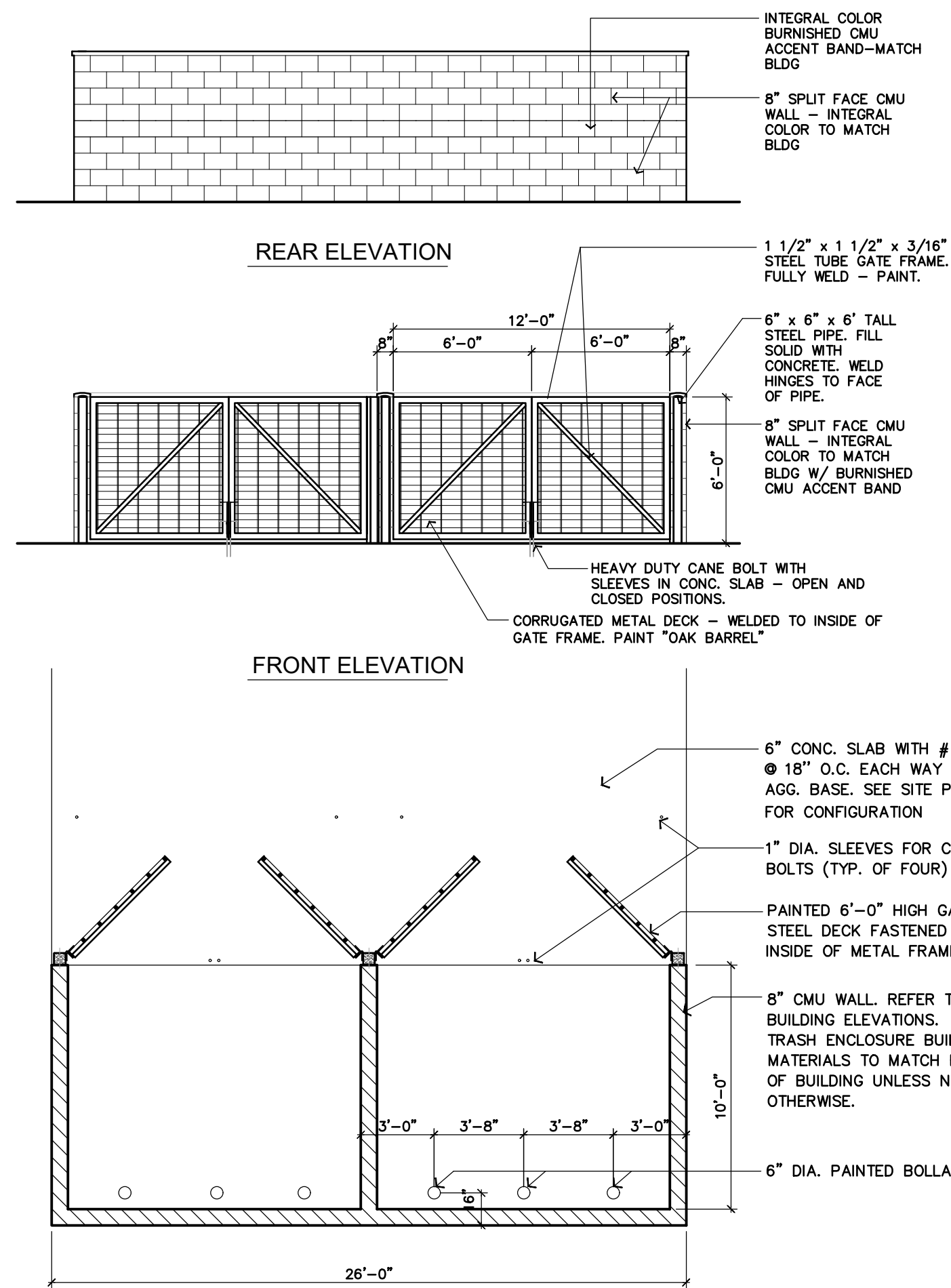
**EAST ELEVATION (Meridian Rd.)**

SCALE: 1/8" = 1'-0"



**WEST ELEVATION**

SCALE: 1/8" = 1'-0"



**TRASH ENCLOSURE PLAN / ELEVATIONS**

SCALE: 3/16" = 1'-0"



THIS PLAN IS PROPERTY OF KINETIC DESIGN. THIS DRAWING IS LOANED WITHOUT OTHER CONSIDERATION THAN THE AGREEMENT AND CONDITION THAT IT IS NOT BE REPRODUCED, COPIED, OR OTHERWISE DISPOSED OF, DIRECTLY OR INDIRECTLY, AND IS NOT TO BE USED IN WHOLE OR IN PART TO ASSIST IN MAKING OR TO FURNISH ANY INFORMATION FOR THE MAKING OF DRAWINGS, PRINTS, APPARATUS OR PARTS THEREOF. THE ACCEPTANCE OF THIS DRAWING WILL BE CONSTRUED AS AN ACCEPTANCE OF THE FOREGOING CONDITIONS.

**CONCEPTUAL ELEVATIONS**  
**LOT 4 / FALCON MARKETPLACE**  
**E. WOODMEN RD. & MERIDIAN RD.**  
**FALCON, CO 80831**



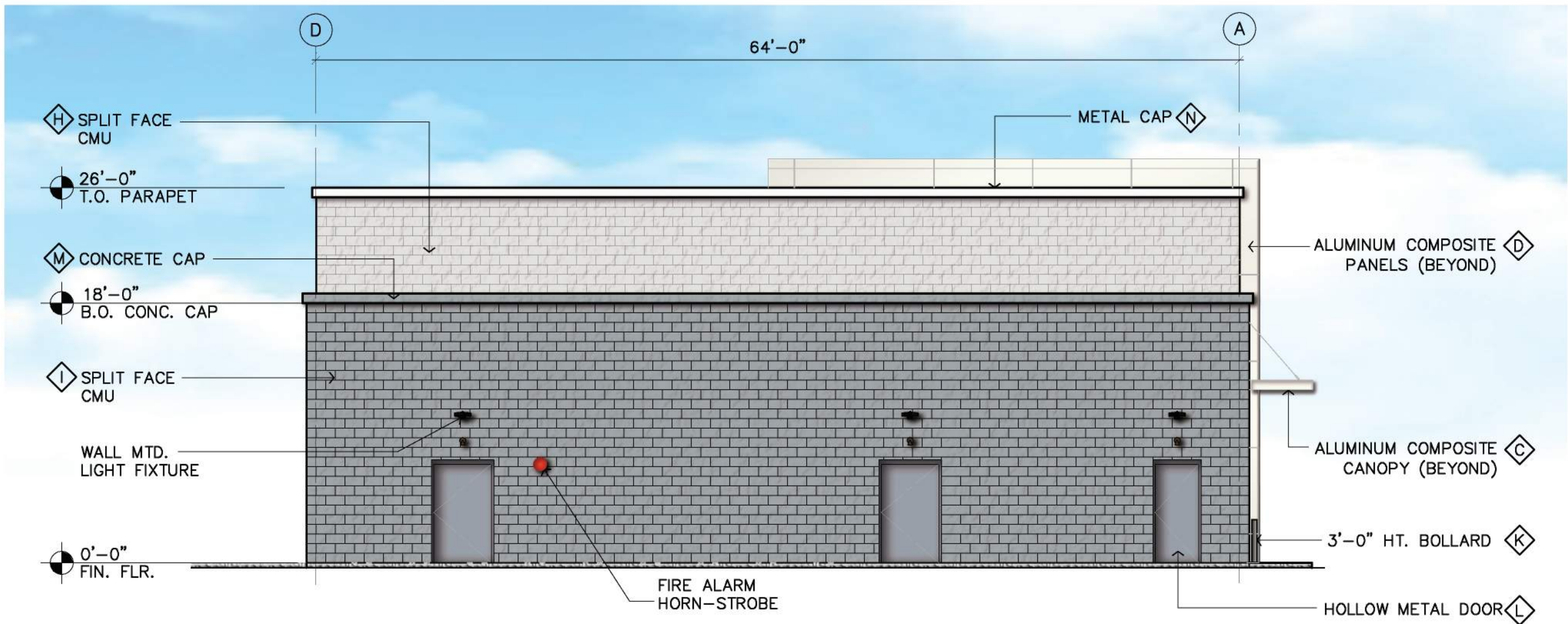
**Kinetic Design**  
20381 Lake Forest Dr.,  
Suite B16  
Lake Forest, CA 92630  
951-710-6334 (T)

BUILDING MODEL	
FRAME DESIGN	
REVISION	REV #1
DATE	02.09.2021
SCALE	AS NOTED
PROJECT NUMBER	COS 12371

Sheet No.

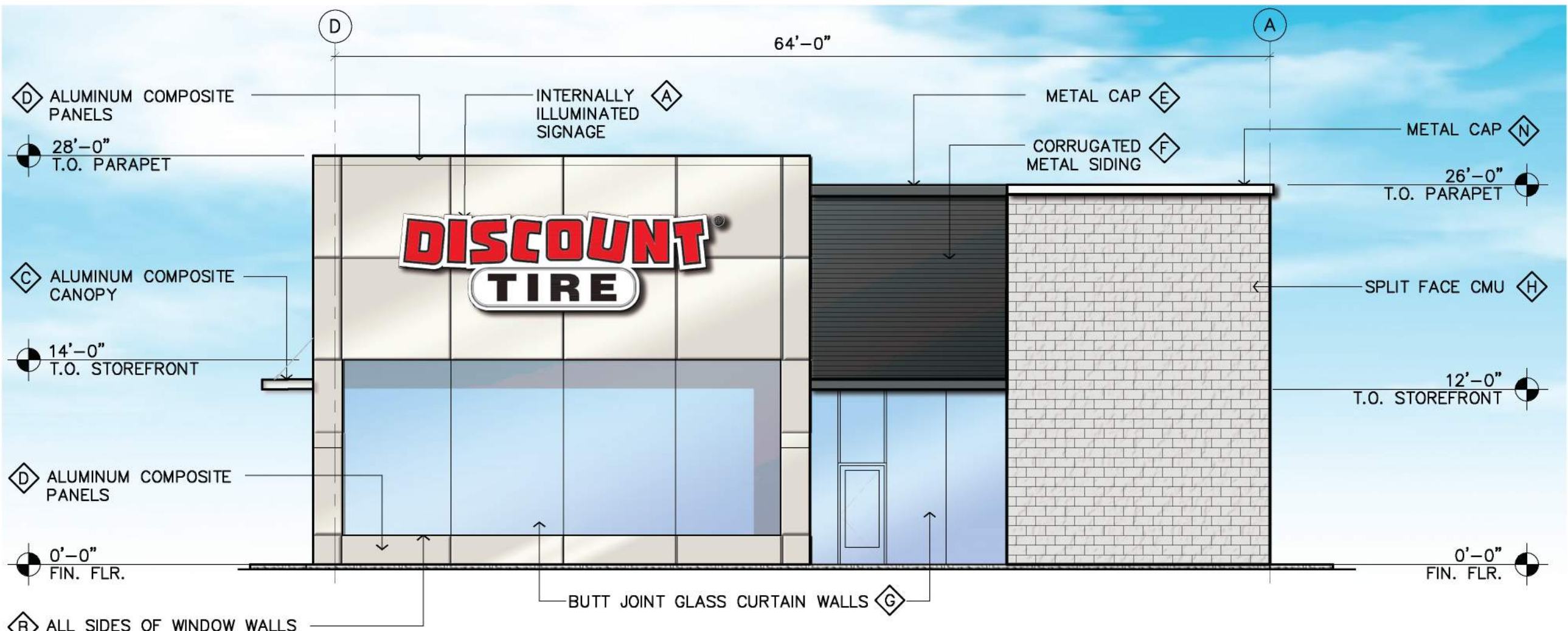
**A.2**





**NORTH ELEVATION**

SCALE: 1/8" = 1'-0"

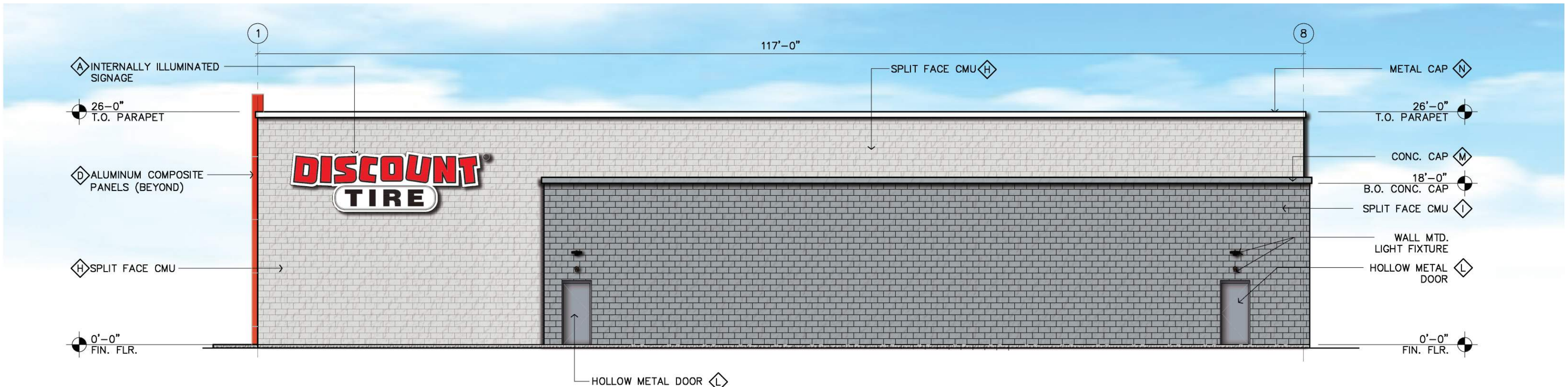


**SOUTH ELEVATION**

SCALE: 1/8" = 1'-0"

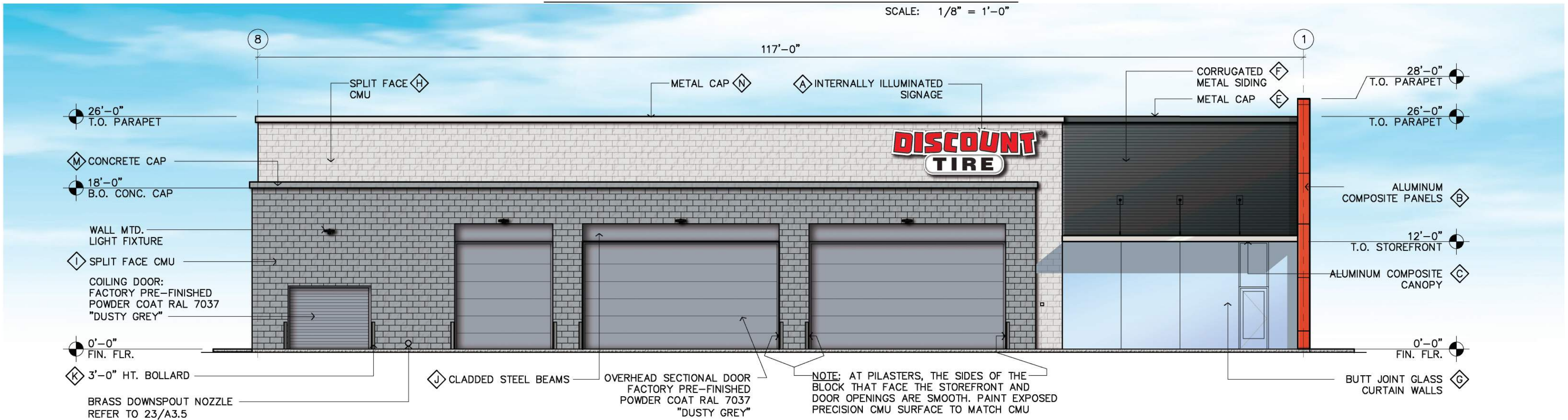
**FINISH LEGEND**

- A 3-DIMENSIONAL INTERNALLY ILLUMINATED SIGNAGE (UNDER SEPARATE PERMIT)
- B ALUMINUM COMPOSITE PANELS: ALUCOBOND "MATTE PATRIOT RED"
- C ALUMINUM CLADDED CANOPY: ALUCOBOND "MATTE BRUSHED STAINLESS"
- D ALUMINUM COMPOSITE PANELS: ALUCOBOND "MATTE BONE WHITE"
- E 8" METAL CAP BY ATAS INTERNATIONAL INC. COATED: "BLACK"
- F CORRUGATED METAL PANEL BY ATAS INTERNATIONAL INC. COATED: "BLACK"
- G ANODIZED ALUMINUM STOREFRONT/CURTAIN WALL - CLEAR ANODIZED FINISH ARCADIA AFG601T
- H INTEGRAL COLOR SPLIT FACE CMU TO MATCH BASALITE 720WR.
- I INTEGRAL COLOR SPLIT FACE CMU TO MATCH BASALITE 800WR.
- J CLADDED STEEL BEAMS - COLOR TO MATCH POWDER COAT SW 7019 "GAUNTLET GREY".
- K STEEL BOLLARDS - COLOR TO MATCH POWDER COAT SW 7019 "GAUNTLET GREY".
- L HOLLOW METAL DOORS-PAINTED TO MATCH BASALITE 800WR.
- M CONCRETE CAP-COLOR TO MATCH BASALITE 800WR.
- N METAL CAP - COLOR TO MATCH BASALITE 720WR.



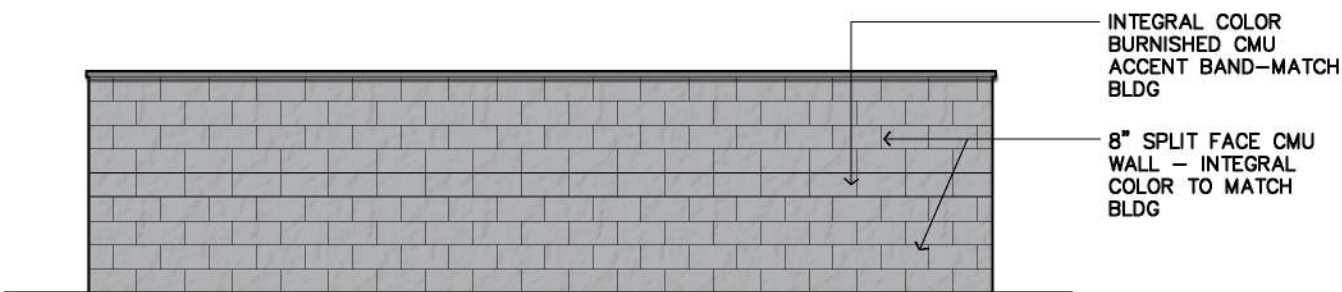
**EAST ELEVATION (Meridian Rd.)**

SCALE: 1/8" = 1'-0"

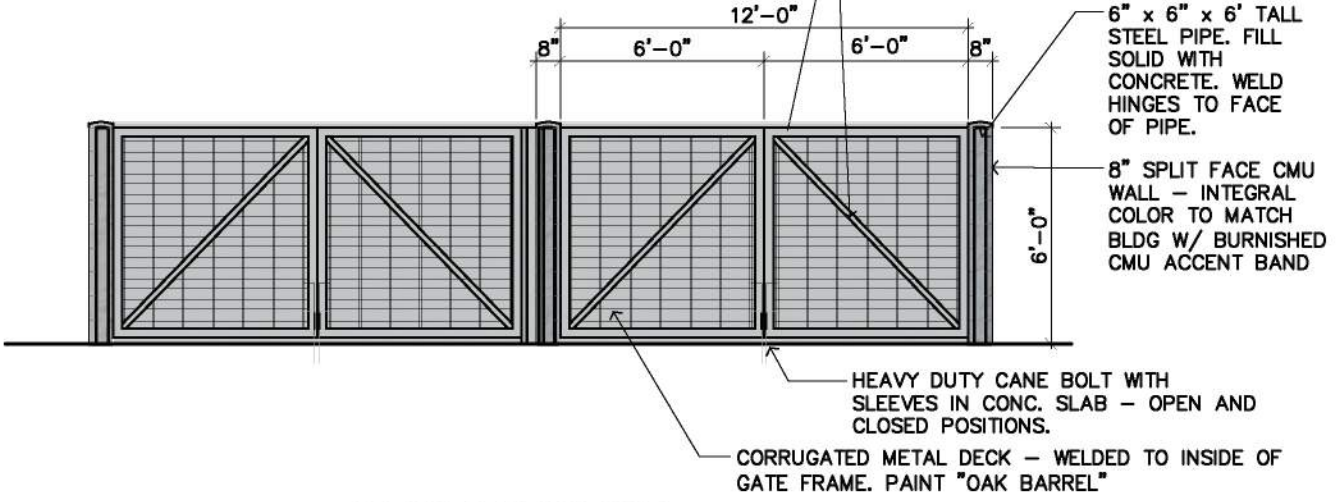


**WEST ELEVATION**

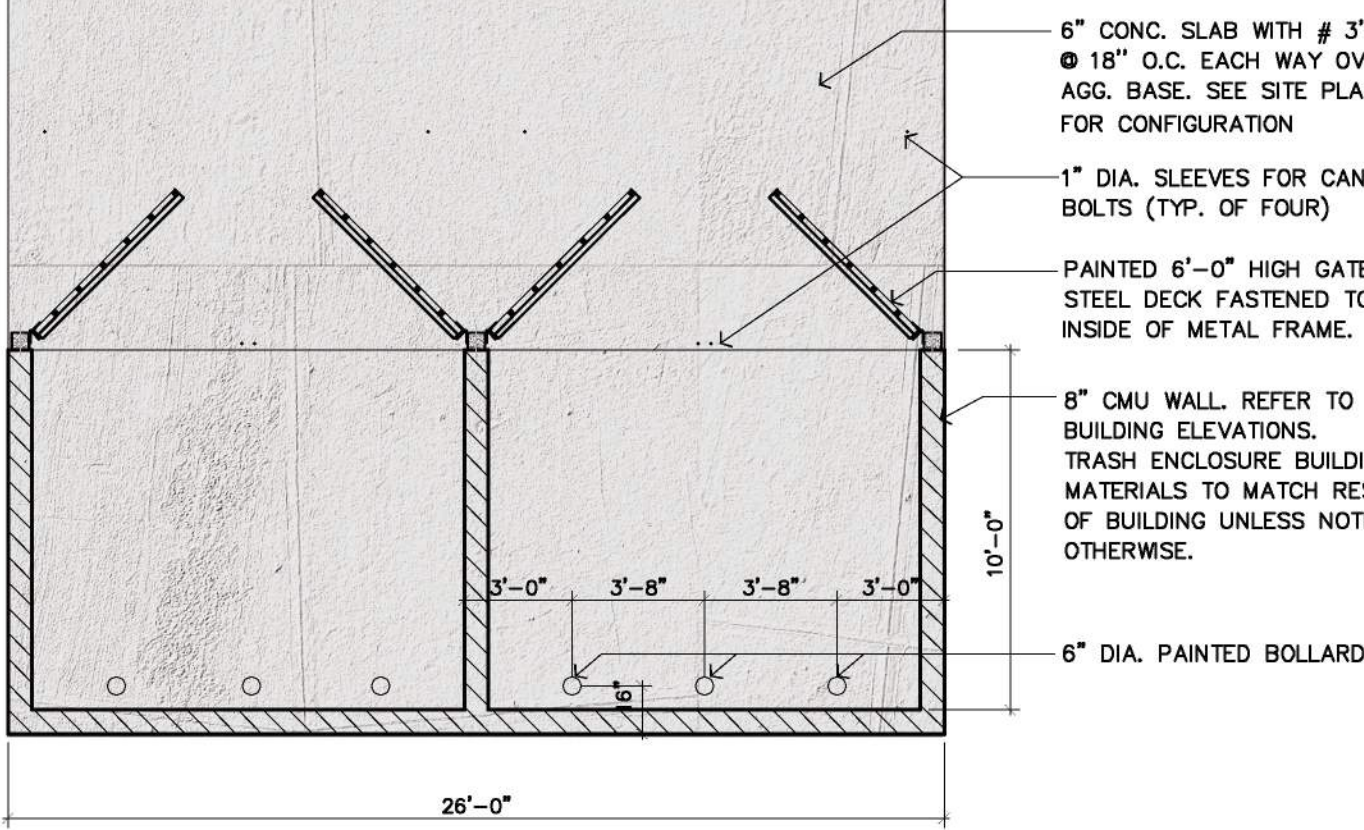
SCALE: 1/8" = 1'-0"



**REAR ELEVATION**



**FRONT ELEVATION**



**TRASH ENCLOSURE PLAN / ELEVATIONS**

SCALE: 3/16" = 1'-0"



THIS PLAN IS PROPERTY OF KINETIC DESIGN. THIS DRAWING IS LOANED WITHOUT OTHER CONSIDERATION THAN THE AGREEMENT AND CONDITION THAT IT IS NOT BE REPRODUCED, COPIED, OR OTHERWISE DISPOSED OF, DIRECTLY OR INDIRECTLY, AND IS NOT TO BE USED IN WHOLE OR IN PART TO ASSIST IN MAKING OR TO FURNISH ANY INFORMATION FOR THE MAKING OF DRAWINGS, PRINTS, APPARATUS OR PARTS THEREOF. THE ACCEPTANCE OF THIS DRAWING WILL BE CONSTRUED AS AN ACCEPTANCE OF THE FOREGOING CONDITIONS.

**CONCEPTUAL ELEVATIONS**  
**LOT 4 / FALCON MARKETPLACE**  
**E. WOODMEN RD. & MERIDIAN RD.**  
**FALCON, CO 80831**



**Kinetic Design**  
20381 Lake Forest Dr.,  
Suite B16  
Lake Forest, CA 92630  
951-710-6334 (T)

BUILDING MODEL	
FRAME DESIGN	
REVISION	REV #1
DATE	02.09.2021
SCALE	AS NOTED
PROJECT NUMBER	COS 12371

Sheet No.

**A.3**