

**ELEVATION**

- A** SIREN WALL SIGN TO REMAIN
- B** 22" CHANNEL LETTERS TO REMAIN
- C** 48" DT WALL SIGN TO REMAIN
- D** 71" SIREN WALL SIGN

**QID 18-43137**

**JOB NAME**

Starbucks #51410

**LOCATION**

209 Gleneagle Gate View  
 Colorado Springs, CO 80921

**CUSTOMER CONTACT**

**SALESMAN / PM**

Christie Pruitt

**DESIGNER**

Greg Sloan

**DWG. DATE**

8-22-18

**REV. DATE / REVISION**

**SCALE**

As Noted

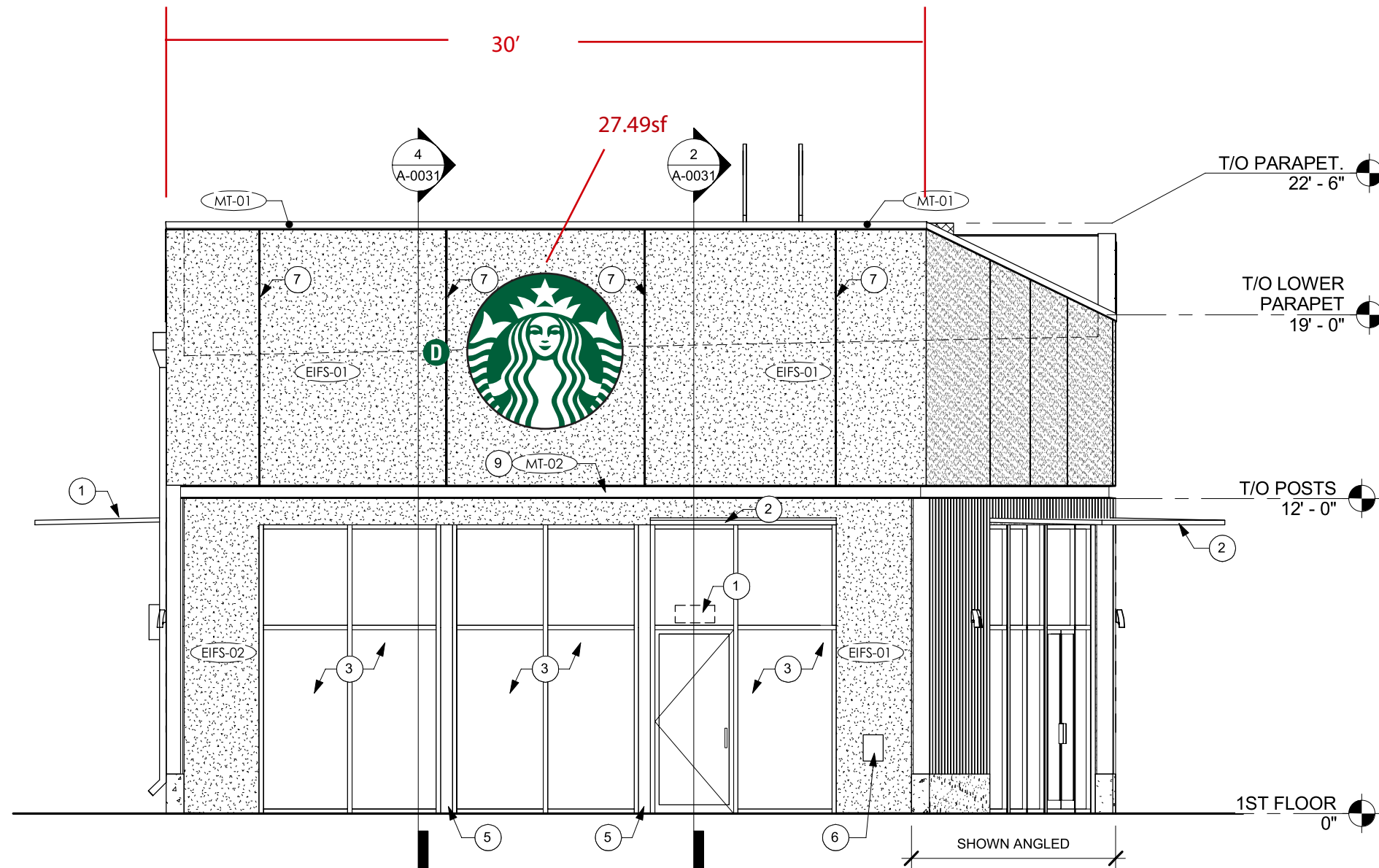
**FILE**

2018/Starbucks/Colorado  
 Springs CO/18-43137

**DESIGN SPECIFICATIONS ACCEPTED BY:**

EST:	CLIENT:
SLS/PM:	LANDLORD:

THE INTENT OF THIS DRAWING IS TO SHOW A CONCEPTUAL REPRESENTATION OF THE PROPOSED SIGNAGE. DUE TO VARIATIONS IN PRINTING DEVICES AND SUBSTRATES, THE FINISHED PRODUCT MAY DIFFER SLIGHTLY FROM DRAWING.



**ELEVATION @ ENTRY WEST ELEVATION**

Scale: 3/16" = 1'

COLOR LEGEND		
	PMS/PAIN	VINYL
	PMS 3425 C	3M 3630-76
	RAL 7021M	3M 3630-22
	PMS WHITE	3M 3630-20/ 7725-10 TRANSLUCENT OPAQUE
	PMS 369 C	NA
	REFL. WHITE	3M 680-10