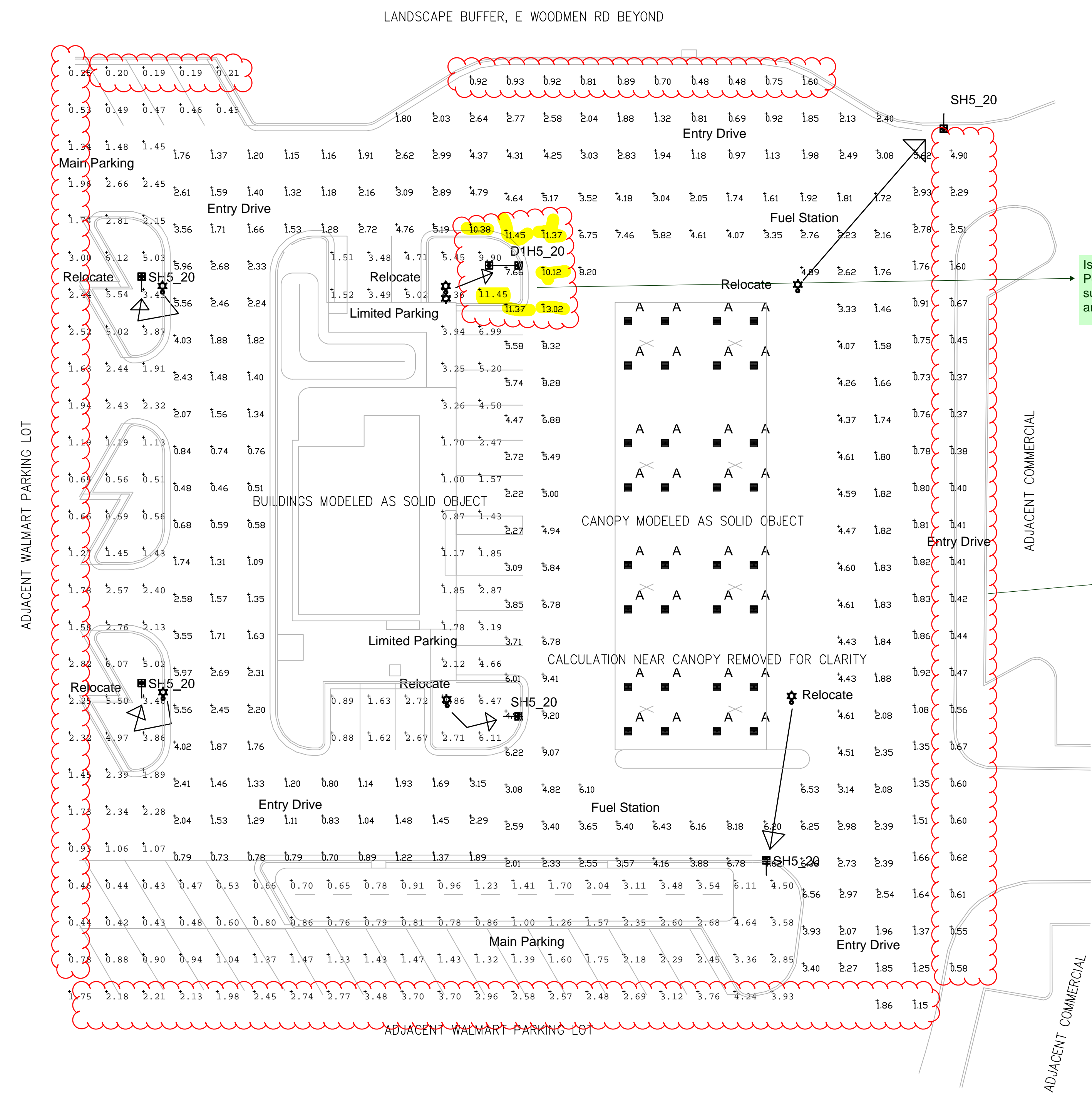


Symbol	Qty	Label	Arrangement	LLF	Description	Arr. Watts	Arr. Lum. Lumens	BUG Rating
	3	(E) D1H5_20	BACK-BACK	0.864	(E) 2-EALP035H5SM750NDD1BLCKF 17ft pole on 3ft base	300	40000	B4-U0-G2
	3	(E) SH5_20	SINGLE	0.864	(E) 1-EALP035H5SM750NDD1BLCKF 17ft pole on 3ft base	150	20000	B4-U0-G2
	32	A	SINGLE	0.864	CRUS-SC-LED-LW-CW MTD @ 15'	87.9	10871	B3-U0-G1
	1	D1H5_20	BACK-BACK	0.864	Relocated 2-EALP035H5SM750NDD1BLCKF 17ft pole on 3ft base	300	40000	B4-U0-G2
	5	SH5_20	SINGLE	0.864	Relocated 1-EALP035H5SM750NDD1BLCKF 17ft pole on 3ft base	150	20000	B4-U0-G2

NOTE: VOLTAGE FOR THE FUEL STATION SITE LIGHTING PACKAGE MAY BE DIFFERENT THAN SITE LIGHTING ASSOCIATED WITH THE STORE PARKING LOT. VERIFY AVAILABLE VOLTAGE PRIOR TO SHIPPING.



Is this a loading or unloading area/platform?  
Per the code section 6.2.3.B.1.d foot candles cannot surpass 10 foot candles unless in a loading or unloading area.

Recommend accept lower than normal values as the existing LED upgrade was already much lower than normal, and other special lighting conditions: The overall pole height is lower than normal, and values drop off dramatically near the north side of the property. Additionally, this is located at the far perimeter and light levels should normally decline at the perimeter.

Please include:  
-applicant/owner contact information

Please change lighting at the property lines. Per the code:

(e) Measurement at Property Boundaries. Light levels measured at the property line of the development site adjacent to residential property or public right of way shall not exceed 0.1 foot candles as a direct result of the on-site lighting. All light fixtures mounted within 15' of any residential property line of the site shall be classified as IES Type II or Type III, or fixture demonstrated to provide similar distribution patterns and shielding properties. Fixtures shall be fitted with "house side shield" reflectors on the sides facing the residential property line.

Label	Avg	Max	Min	Max/Min
Entry Drive	1.84	10.38	0.37	28.05
Fuel Station	4.55	13.02	1.46	8.92
Limited Parking	3.43	11.45	0.87	13.16
Main Parking	1.99	6.12	0.19	32.21

FALCON, CO  
GE EVOLVE AREA LUMINARIES  
20 ft MOUNTING HEIGHTS  
EXISTING AND NEW POLE LOCATIONS  
TARGET: 2.75 fc AVG 1.50 fc MIN FUEL STATION  
0.40 fc MIN ENTRY DRIVEWAYS

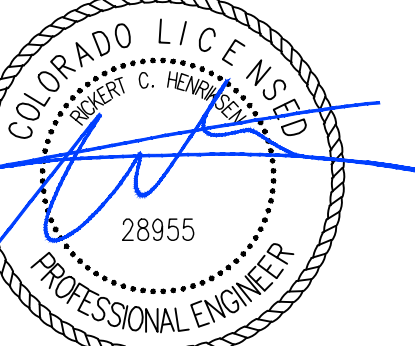
Symbol	Qty	Label	Arrangement	LLF	Description	Arr. Watts	Arr. Lum. Lumens	BUG Rating
	3	(E) D1H5_20	BACK-BACK	0.864	(E) 2-EALP035H5SM750NDD1BLCKF 17ft pole on 3ft base	300	40000	B4-U0-G2
	3	(E) SH5_20	SINGLE	0.864	(E) 1-EALP035H5SM750NDD1BLCKF 17ft pole on 3ft base	150	20000	B4-U0-G2
	32	A	SINGLE	0.864	CRUS-SC-LED-LW-CW MTD @ 15'	87.9	10871	B3-U0-G1
	1	D1H5_20	BACK-BACK	0.864	Relocated 2-EALP035H5SM750NDD1BLCKF 17ft pole on 3ft base	300	40000	B4-U0-G2
	5	SH5_20	SINGLE	0.864	Relocated 1-EALP035H5SM750NDD1BLCKF 17ft pole on 3ft base	150	20000	B4-U0-G2

NOTE: VOLTAGE FOR THE FUEL STATION SITE LIGHTING PACKAGE MAY BE DIFFERENT THAN SITE LIGHTING ASSOCIATED WITH THE STORE PARKING LOT. VERIFY AVAILABLE VOLTAGE PRIOR TO SHIPPING.

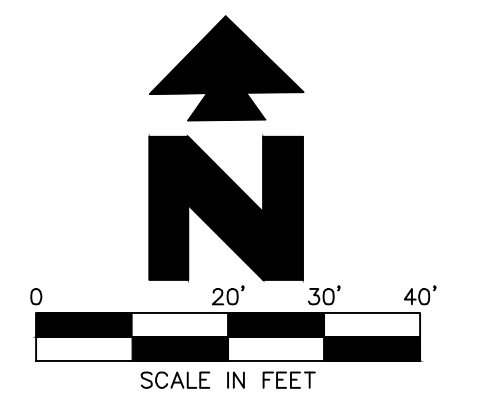


CEI ENGINEERING ASSOCIATES, INC.  
710 W. PINEDALE AVE.  
FRESNO, CA 93711  
PHONE: (559) 447-3119  
FAX: (559) 447-3129

Phillip Bejarano - SLDP June'11



Date Signed: April 25, 2023

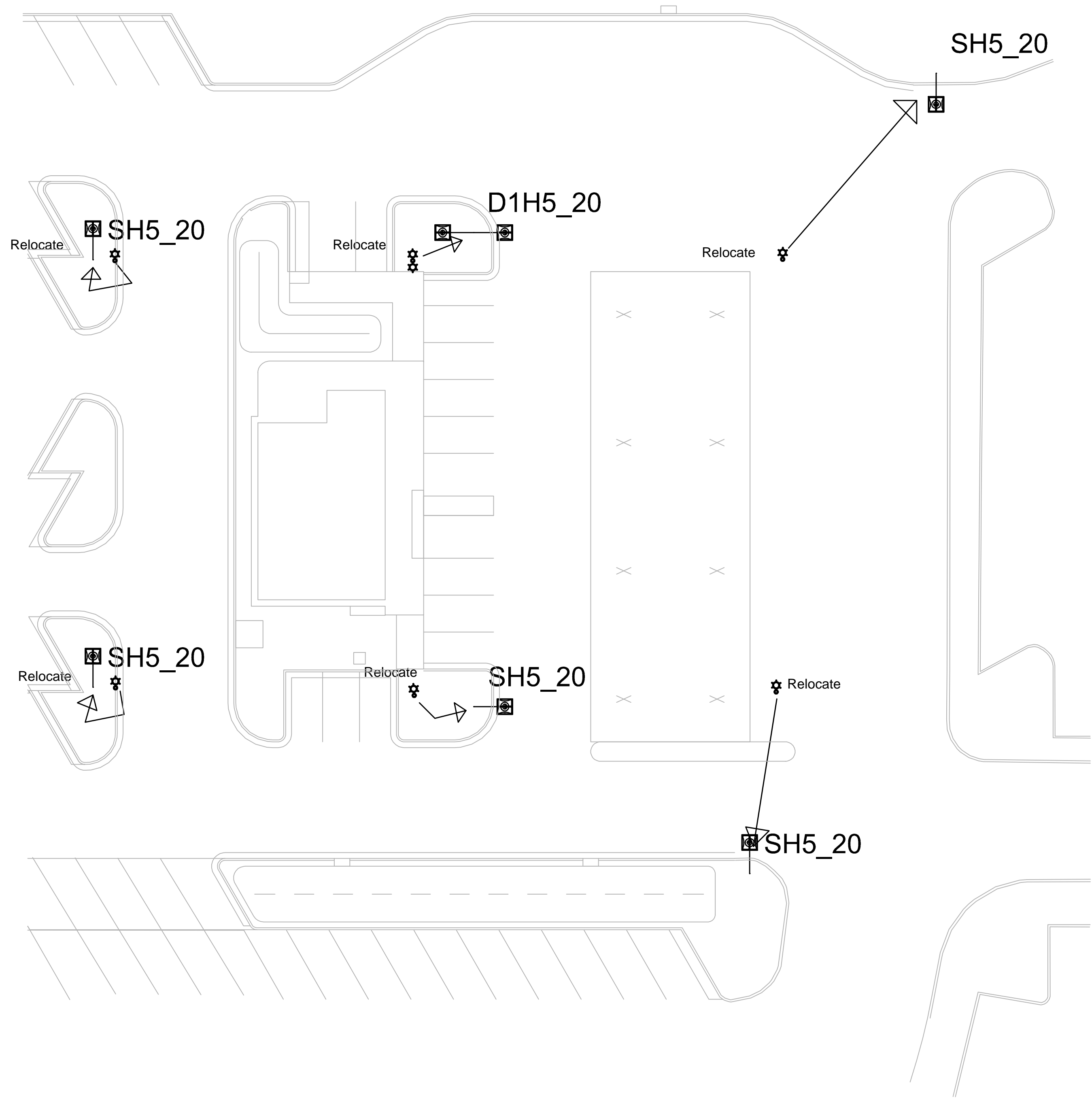


FUEL STATION #4335  
11550 Meridian Market View  
Falcon, CO 80831

PROFESSIONAL OF RECORD  
PROJECT MANAGER  
DESIGNER  
CEI PROJECT NUMBER  
DATE  
REVISION

PHOTOMETRIC PLAN  
SHEET TITLE  
SHEET NUMBER

APP D



Relocate (5) SH5\_20 and (1) D1H5\_20 to new locations indicated.

### Ordering Number Logic

Evolve™ LED Area Light (EALP)

PROJ. ID	GENERATION	VOLTAGE	OPTICAL DISTRIBUTION	CRI	CCT	DIMMING	CONTROLS	MOUNTING	COLOR	OPTIONS
EALP	01	120	SW	90	4000K	N	A	CL	GR	F

TYPE	OPTICAL CODE	DISTRIBUTION	TYPICAL INITIAL LUMENS		TYPICAL SYSTEM WATTAGE		BUG RATING		IES FILE NUMBER	IES FILE NUMBER	IES FILE NUMBER
			3000K	4000K	3000K	4000K	3000K	4000K			
TYPE I	CS	Symmetric Medium	7500	8000	67	83-U0-G2	B3-U0-G2	EALP01_CSSM730	JES	EALP01_CSSM740	JES
	DS	Symmetric Medium	9400	10000	89	B3-U0-G2	B3-U0-G2	EALP01_DSSM730	JES	EALP01_DSSM740	JES
	FS	Symmetric Medium	24100	25000	140	B4-U0-G2	B4-U0-G2	EALP01_FSSM730	JES	EALP01_FSSM740	JES
	HS	Symmetric Medium	18800	20000	183	B4-U0-G2	B4-U0-G2	EALP01_HSSM730	JES	EALP01_HSSM740	JES
TYPE II	JS	Symmetric Medium	23500	25000	220	B3-U0-G3	B3-U0-G3	EALP01_JSSM730	JES	EALP01_JSSM740	JES
	KS	Symmetric Medium	28300	30000	274	B3-U0-G3	B3-U0-G3	EALP01_KSSM730	JES	EALP01_KSSM740	JES
	LS	Symmetric Medium	31700	33600	330	B3-U0-G4	B3-U0-G4	EALP01_LSSM730	JES	EALP01_LSSM740	JES
	MS	Symmetric Wide	8000	8600	67	B3-U0-G1	B3-U0-G1	EALP01_MSSM730	JES	EALP01_MSSM740	JES
TYPE III	NS	Symmetric Wide	10000	10600	89	B3-U0-G1	B3-U0-G1	EALP01_NSSM730	JES	EALP01_NSSM740	JES
	OS	Symmetric Wide	15100	16000	140	B3-U0-G2	B3-U0-G2	EALP01_OSSM730	JES	EALP01_OSSM740	JES
	SS	Symmetric Wide	20100	21300	183	B4-U0-G2	B4-U0-G2	EALP01_SSSM730	JES	EALP01_SSSM740	JES
	TS	Symmetric Wide	25200	26700	220	B4-U0-G2	B4-U0-G2	EALP01_TSSM730	JES	EALP01_TSSM740	JES
TYPE IV	US	Symmetric Wide	30200	32000	274	B3-U0-G2	B3-U0-G2	EALP01_USSM730	JES	EALP01_USSM740	JES
	VS	Symmetric Wide	33600	35900	330	B3-U0-G2	B3-U0-G2	EALP01_VSSM730	JES	EALP01_VSSM740	JES
	CS	Asymmetric Forward	7000	7500	73	B1-U0-G2	B1-U0-G2	EALP01_CSM730	JES	EALP01_CSM740	JES
	DS	Asymmetric Forward	9400	10000	93	B2-U0-G2	B2-U0-G2	EALP01_DSM730	JES	EALP01_DSM740	JES
TYPE V	FS	Asymmetric Forward	24100	25000	140	B2-U0-G3	B2-U0-G3	EALP01_FSM730	JES	EALP01_FSM740	JES
	HS	Asymmetric Forward	18800	20000	183	B3-U0-G4	B3-U0-G4	EALP01_HSM730	JES	EALP01_HSM740	JES
	JS	Asymmetric Forward	23500	25000	220	B3-U0-G4	B3-U0-G4	EALP01_JSM730	JES	EALP01_JSM740	JES
	KS	Asymmetric Forward	28300	30000	274	B3-U0-G4	B3-U0-G4	EALP01_KSM730	JES	EALP01_KSM740	JES
TYPE VI	LS	Asymmetric Forward	31700	33600	330	B3-U0-G5	B3-U0-G5	EALP01_LSM730	JES	EALP01_LSM740	JES
	MS	Asymmetric Wide	7500	8000	73	B1-U0-G1	B2-U0-G2	EALP01_CSM730	JES	EALP01_CSM740	JES
	NS	Asymmetric Wide	10000	10600	93	B2-U0-G2	B2-U0-G2	EALP01_DSM730	JES	EALP01_DSM740	JES
	OS	Asymmetric Wide	15100	16000	140	B2-U0-G2	B2-U0-G2	EALP01_OSM730	JES	EALP01_OSM740	JES
TYPE VII	SS	Asymmetric Wide	20100	21300	183	B3-U0-G3	B3-U0-G3	EALP01_JSM730	JES	EALP01_JSM740	JES
	TS	Asymmetric Wide	25200	26700	220	B3-U0-G3	B3-U0-G3	EALP01_TSM730	JES	EALP01_TSM740	JES
	US	Asymmetric Wide	30200	32000	274	B3-U0-G3	B3-U0-G3	EALP01_USM730	JES	EALP01_USM740	JES
	VS	Asymmetric Wide	33600	35900	330	B3-U0-G4	B3-U0-G4	EALP01_VSM730	JES	EALP01_VSM740	JES
TYPE VIII	C2	Asymmetric Narrow	7300	7800	73	B2-U0-G2	B2-U0-G2	EALP01_C2M730	JES	EALP01_C2M740	JES
	D2	Asymmetric Narrow	9800	10400	93	B2-U0-G2	B2-U0-G2	EALP01_D2M730	JES	EALP01_D2M740	JES
	F2	Asymmetric Narrow	14700	15600	136	B3-U0-G3	B3-U0-G3	EALP01_F2M730	JES	EALP01_F2M740	JES
	H2	Asymmetric Narrow	19600	20800	183	B3-U0-G3	B3-U0-G3	EALP01_H2M730	JES	EALP01_H2M740	JES
TYPE IX	J2	Asymmetric Narrow	24500	26000	220	B3-U0-G3	B3-U0-G3	EALP01_J2M730	JES	EALP01_J2M740	JES
	K2	Asymmetric Narrow	29400	31200	274	B3-U0-G3	B3-U0-G3	EALP01_K2M730	JES	EALP01_K2M740	JES
	L2	Asymmetric Narrow	33300	34900	330	B3-U0-G4	B3-U0-G4	EALP01_L2M730	JES	EALP01_L2M740	JES
	M2	Asymmetric Narrow	37200	39600	387	B4-U0-G3	B4-U0-G3	EALP01_M2M730	JES	EALP01_M2M740	JES
TYPE X	LA	Asymmetric Auto	36600	38800	330	B4-U0-G3	B4-U0-G3	EALP01_LAM730	JES	EALP01_LAM740	JES
	LB	Asymmetric Auto	36600	38800	330	B4-U0-G3	B4-U0-G3	EALP01_LBM730	JES	EALP01_LBM740	JES

FALCON, CO  
GE EVOLVE AREA LUMINARIES  
20 ft MOUNTING HEIGHTS  
EXISTING AND NEW POLE LOCATIONS  
TARGET: 2.75 fc AVG 1.50 fc MIN FUEL STATION  
0.40 fc MIN ENTRY DRIVEWAYS