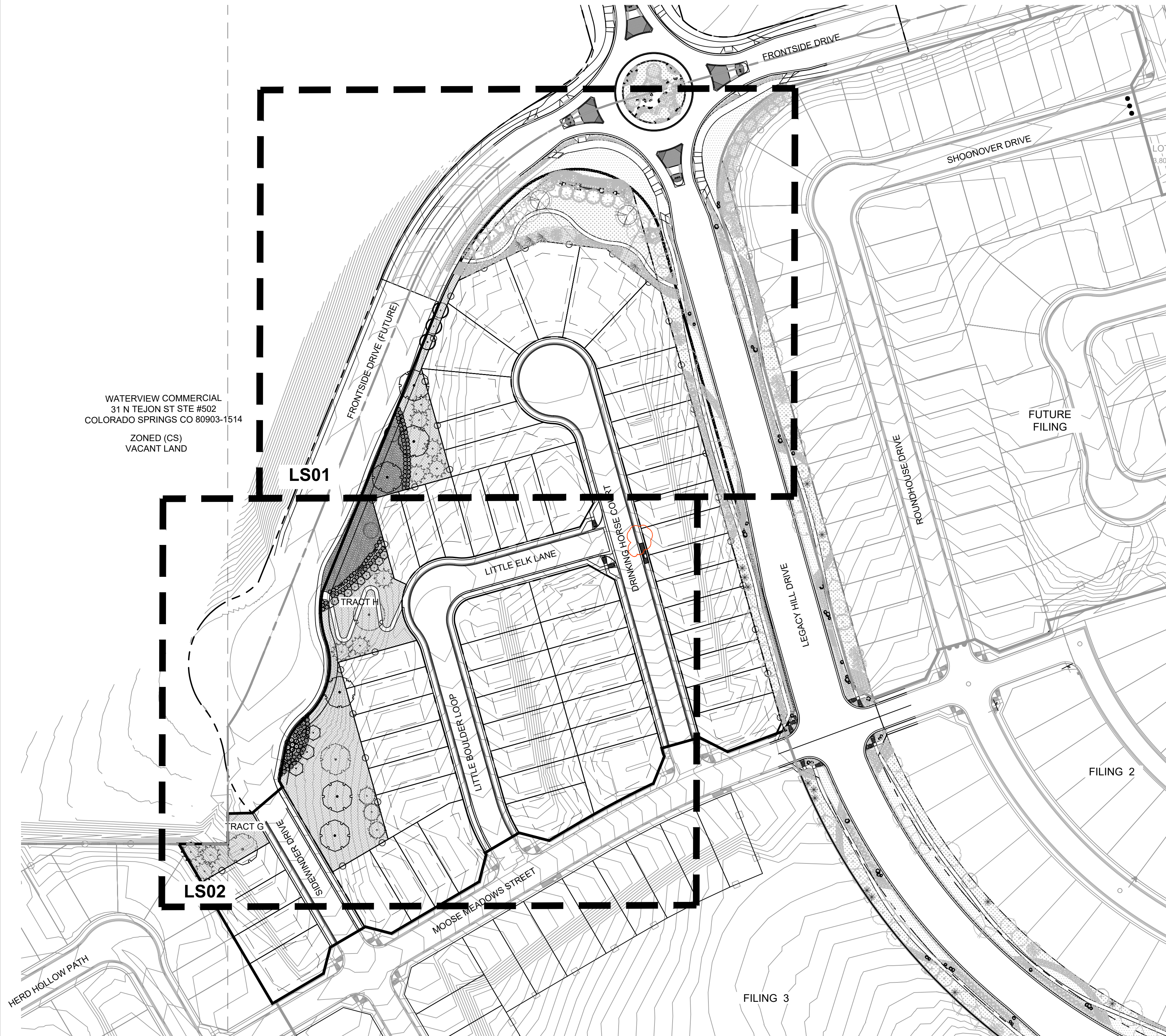


Know what's below.
Call before you dig.

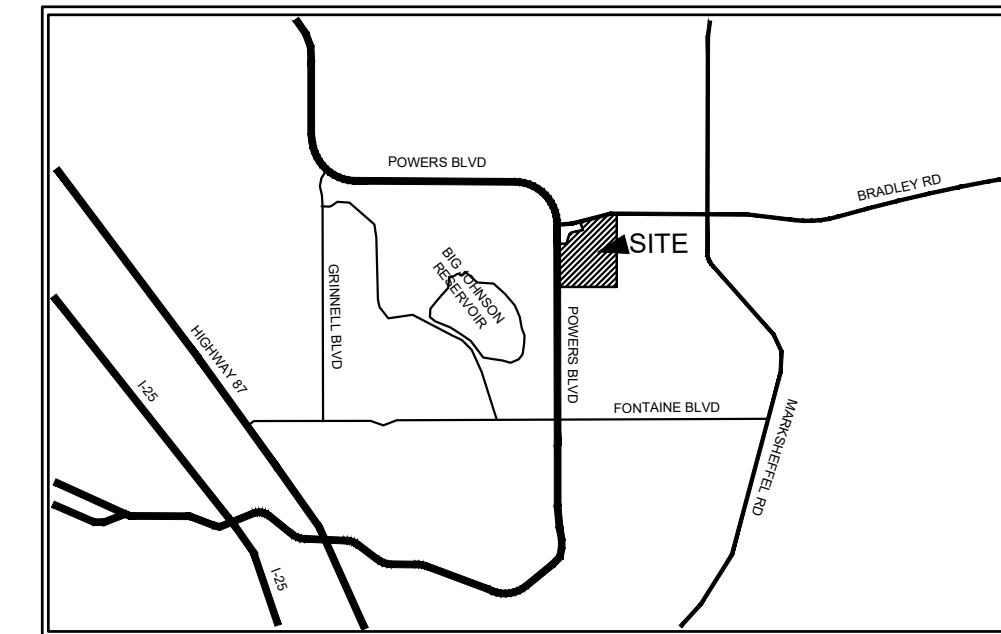
TRAILS AT ASPEN RIDGE FILING NO. 5

EL PASO COUNTY, COLORADO

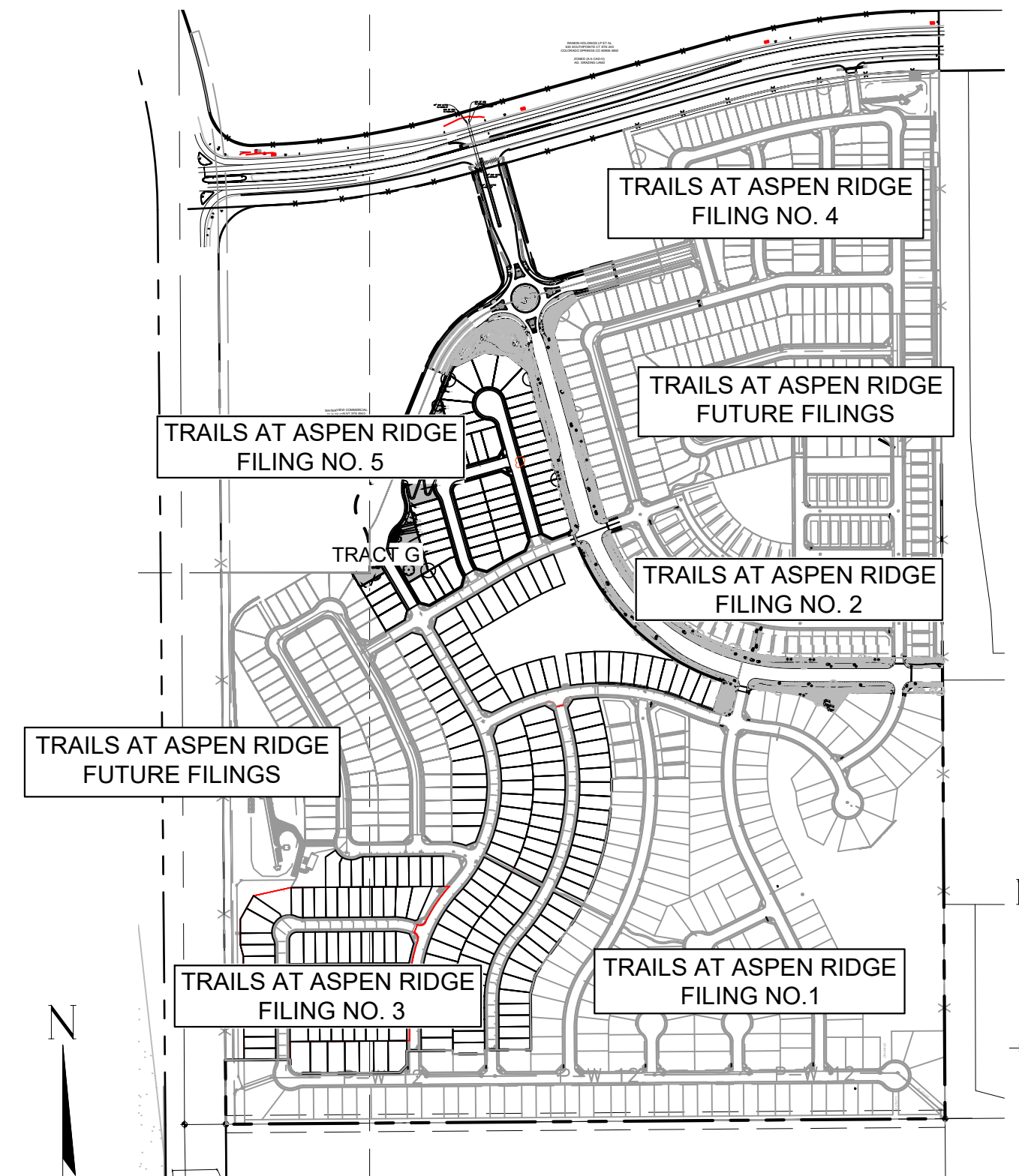
LANDSCAPE CONSTRUCTION DOCUMENTS



VICINITY MAP



SITE MAP



PROJECT TEAM
OWNER/DEVELOPER
COLA, LLC
555 MIDDLE CREEK PARKWAY, STE 380
COLORADO SPRINGS, CO 80921
PHONE: (719)459-0807

APPLICANT
MATRIX DESIGN GROUP
2435 RESEARCH PKWY STE 300
COLORADO SPRINGS, CO 80920
PHONE: (719)575-0100

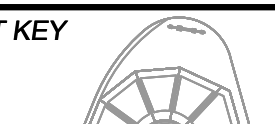

LANDSCAPE ARCHITECT
MATRIX DESIGN GROUP
2435 RESEARCH PKWY STE 300
COLORADO SPRINGS, CO 80920
PHONE: (719)575-0100

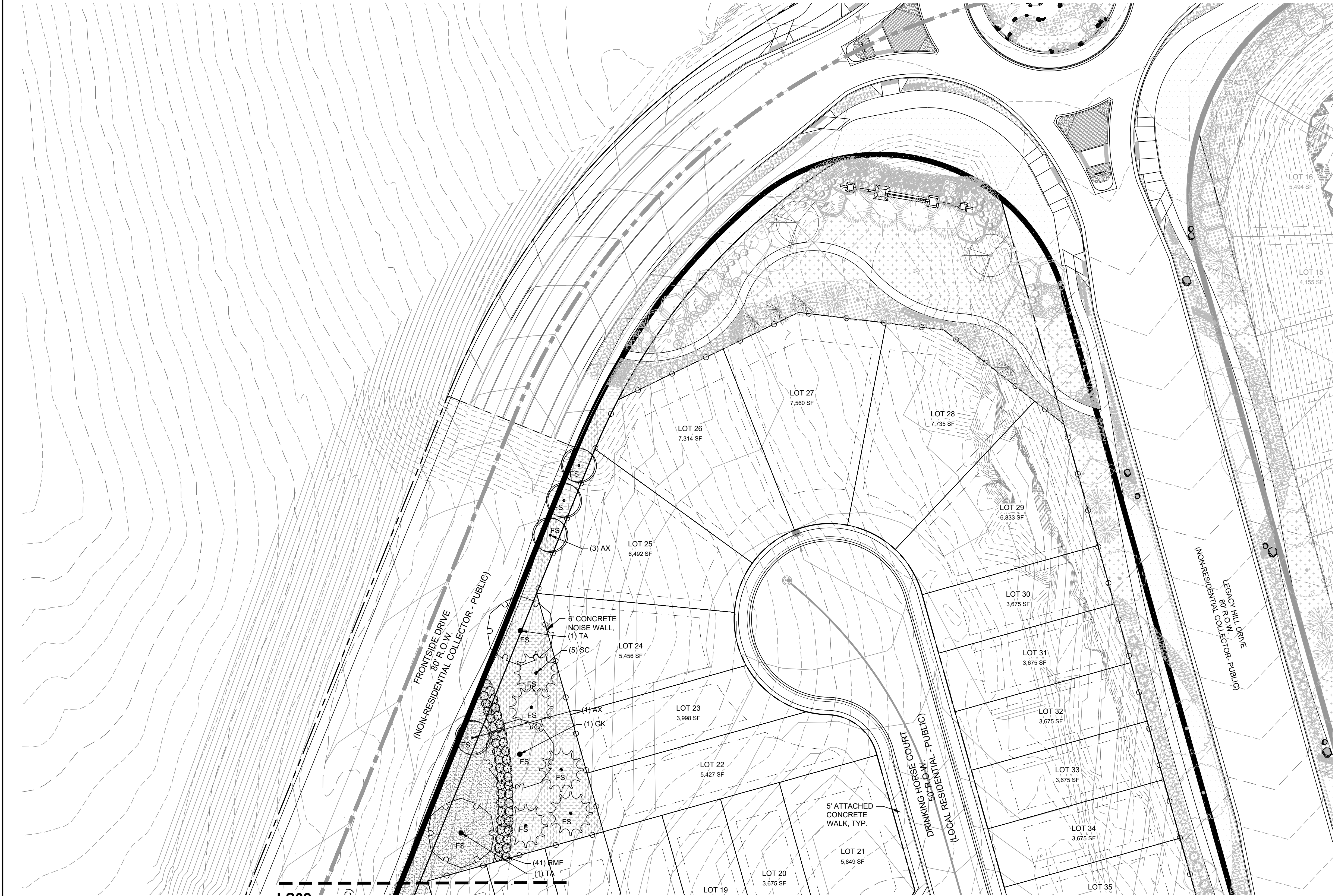
CIVIL ENGINEER
MATRIX DESIGN GROUP
2435 RESEARCH PKWY STE 300
COLORADO SPRINGS, CO 80920
PHONE: (719)575-0100

SHEET INDEX :

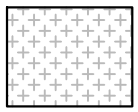
DESCRIPTION	NUMBER	TITLE
COVER	1	CV01
LANDSCAPE PLAN	2	LS01
LANDSCAPE PLAN	3	LS02
LANDSCAPE NOTES	4	LS03
LANDSCAPE DETAILS	5	LS04

PCD FILING NO.: SF-21-XXX

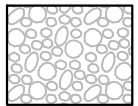
REFERENCE DRAWINGS						SHEET KEY		BENCHMARK COLORADO SPRINGS UTILITIES (FIMS) MONUMENT F206 A BERNTSEN TOP SECURITY MONUMENT SYSTEM WITH A 3.5-INCH DIAMETER ALUMINUM CAP IN A ROAD BOX, LOCATED ON THE NORTHWEST CORNER OF FONTAINE BOULEVARD AND POWERS BOULEVARD, ELEVATION - 5897.89' U.S. SURVEY FT BASIS OF BEARING BEARINGS ARE BASED ON THE NORTH LINE OF THE NORTHWEST QUARTER OF SECTION 9, TOWNSHIP 15 SOUTH, RANGE 65 WEST OF THE 6TH P.M. SAID LINE BEARS S89°51'23"E FROM THE NORTHWEST CORNER OF SAID SECTION 9 (2 1/2" AULM. CAP PLS 17664) TO THE N 1/4 CORNER OF SAID SECTION 9 (3 1/2" AULM. CAP PLS 10377)	SEAL	TRAILS AT ASPEN RIDGE					
											FILING 5				
											COVER				
	No.	DATE	DESCRIPTION							BY					
	REVISIONS														
COMPUTER FILE MANAGEMENT															
FILE NAME: S:\21.886.048 (Trails at Aspen Ridge - F5)\100 Dwg\104 Plan Sets\Construction Plans\Landscape\LS01.dwg															
CTB FILE: Matrix(black).ctb															
PLOT DATE: October 19, 2021 10:01:21 AM															
THIS DRAWING IS CURRENT AS OF PLOT DATE AND MAY BE SUBJECT TO CHANGE.															
PREPARED BY: 															
FOR AND ON BEHALF OF MATRIX DESIGN GROUP, INC. PROJECT No. 21.886.048															
DESIGNED BY: ##		SCALE		DATE ISSUED: AUGUST 20, 2021		DRAWING No. CV01									
DRAWN BY: ##		HORIZ. N/A		SHEET 1 OF 5											
CHECKED BY: ##		VERT. N/A													



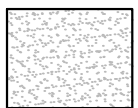
LEGEND



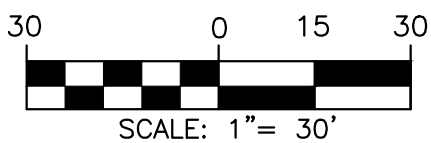
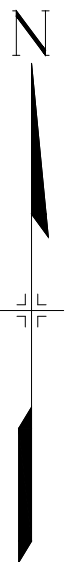
NATIVE SEED A
PAWNEE BUTTE LOW GROW NATIVE MIX
-ARIZONA FESCUE, SANDBERG BLUEGRASS, ROCKY MOUNTAIN FESCUE, BIG BLUE GRASS
-SEED RATE: PER SEED SUPPLIES RECOMMENDATION



1 1/2" ROCK
TYPE: DESERT SAND RIVER
SUPPLIER: C & C SAND OR APPROVED EQUAL



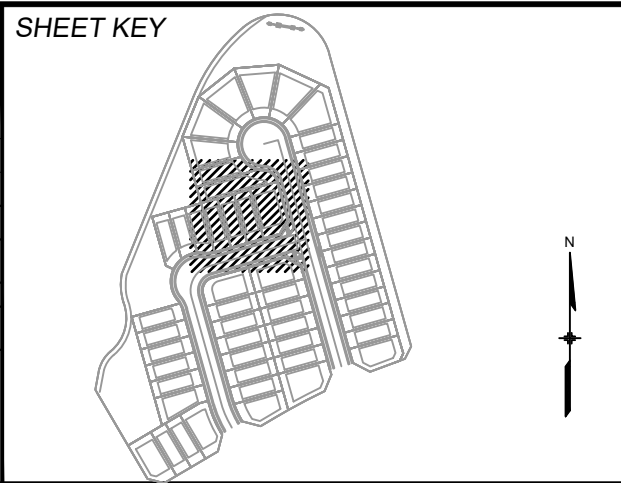
SOD
3- WAY FESCUE/BUEGRASS OR APPROVED EQUAL



LS02

PCD FILING NO.: SF-21-XXX

REFERENCE DRAWINGS			
No.	DATE	DESCRIPTION	BY
REVISIONS			
COMPUTER FILE MANAGEMENT			
FILE NAME: S:\21.886.048 (Trails at Aspen Ridge - F5)\100 Dwg\104 Plan Sets\Construction Plans\Landscape\LS01.dwg			
CTB FILE: Matrix(black).ctb			
PLOT DATE: October 19, 2021 10:01:29 AM			
THIS DRAWING IS CURRENT AS OF PLOT DATE AND MAY BE SUBJECT TO CHANGE.			



BENCHMARK
COLORADO SPRINGS UTILITIES (FIMS) MONUMENT F206
A BERTSEN TOP SECURITY MONUMENT SYSTEM WITH A 3.5-INCH DIAMETER ALUMINUM CAP IN A ROAD BOX, LOCATED ON THE NORTHWEST CORNER OF FONTAINE BOULEVARD AND POWERS BOULEVARD.
ELEVATION - 5897.89' U.S. SURVEY FT

BASIS OF BEARING
BEARINGS ARE BASED ON THE NORTH LINE OF THE NORTHWEST QUARTER OF SECTION 9, TOWNSHIP 15 SOUTH, RANGE 65 WEST OF THE 6TH P.M. SAID LINE BEARS S89°51'23"E FROM THE NORTHWEST CORNER OF SAID SECTION 9 (2 1/2" AULM. CAP PLS 17664) TO THE N 1/2 CORNER OF SAID SECTION 9 (3 1/2" AULM. CAP PLS 10377)



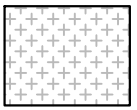
SEAL

FOR AND ON BEHALF OF
MATRIX DESIGN GROUP, INC.
PROJECT No. 21.886.048

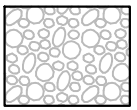
TRAILS AT ASPEN RIDGE					
FILING 5					
LANDSCAPE PLAN					
DESIGNED BY:	##	SCALE	DATE ISSUED:	AUGUST 20, 2021	DRAWING No.
DRAWN BY:	##	HORIZ. N/A			
CHECKED BY:	##	VERT. N/A	SHEET	2 OF 5	LS01



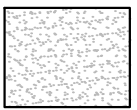
LEGEND



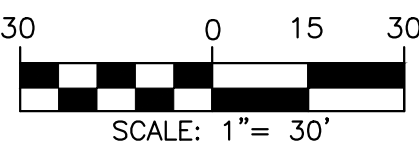
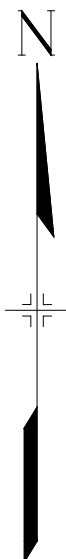
NATIVE SEED A
PAWNEE BUTTE LOW GROW NATIVE MIX
-ARIZONA FESCUE, SANDBERG BLUEGRASS, ROCKY MOUNTAIN FESCUE, BIG BLUE GRASS
-SEED RATE: PER SEED SUPPLIES RECOMMENDATION



1 1/2" ROCK
TYPE: DESERT SAND RIVER
SUPPLIER: C & C SAND OR APPROVED EQUAL

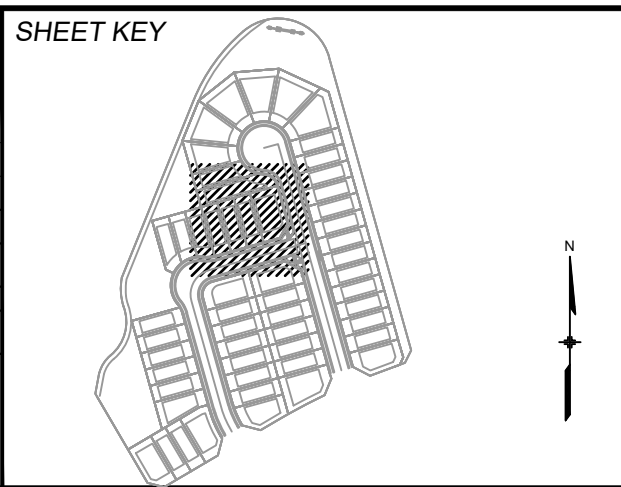


SOD
3- WAY FESCUE/BUEGRASS OR APPROVED EQUAL



PCD FILING No.: SF-21-XXX

REFERENCE DRAWINGS			
No.	DATE	DESCRIPTION	BY
COMPUTER FILE MANAGEMENT			
FILE NAME: S:\21.886.048 (Trails at Aspen Ridge - F5)\100 Dwg\104 Plan Sets\Construction Plans\Landscape\LS01.dwg			
CTB FILE: Matrix(black).ctb			
PLOT DATE: October 19, 2021 10:01:34 AM			
THIS DRAWING IS CURRENT AS OF PLOT DATE AND MAY BE SUBJECT TO CHANGE.			



BENCHMARK
COLORADO SPRINGS UTILITIES (FIMS) MONUMENT F206
A BERNTSEN TOP SECURITY MONUMENT SYSTEM WITH A 3.5-INCH DIAMETER ALUMINUM CAP IN A ROAD BOX, LOCATED ON THE NORTHWEST CORNER OF FONTAINE BOULEVARD AND POWERS BOULEVARD.
ELEVATION - 5897.89' U.S. SURVEY FT

BASIS OF BEARING
BEARINGS ARE BASED ON THE NORTH LINE OF THE NORTHWEST QUARTER OF SECTION 9, TOWNSHIP 15 SOUTH, RANGE 65 WEST OF THE 6TH P.M. SAID LINE BEARS S89°51'23"E FROM THE NORTHWEST CORNER OF SAID SECTION 9 (2 1/2" AULM. CAP PLS 17664) TO THE N 1/2 CORNER OF SAID SECTION 9 (3 1/2" AULM. CAP PLS 10377)



SEAL

FOR AND ON BEHALF OF
MATRIX DESIGN GROUP, INC.
PROJECT No. 21.886.048

TRAILS AT ASPEN RIDGE					
FILING 5					
LANDSCAPE PLAN					
DESIGNED BY:	##	SCALE	DATE ISSUED:	AUGUST 20, 2021	DRAWING No.
CHECKED BY:	##	HORIZ. N/A	SHEET	3 OF 5	LS02

[illegible]



<i>TRAILS AT ASPEN RIDGE</i>					
FILING 5					
LANDSCAPE DETAILS					
DESIGNED BY:	##	SCALE	DATE ISSUED:	AUGUST 20,2021	DRAWING No.
DRAWN BY:	##	HORIZ N/A	SHEET	5 OF 5	LS04
CHECKED BY:	##	VERT. N/A			