

Appendix H

Civil Engineer  
Stormwater Best Management Practice (permanent) Certification Letter

January 28, 2020

El Paso County  
2880 International Cir.  
Colorado Springs, CO 80910

Attn.: Matt Arcidiacono

Sir:

The permanent stormwater Extended Detention Basin (EDB) for the Appaloosa Hwy 24 Subdivision Filing 1A, El Paso County, CO consists of an 28,200 cubic foot Extended Detention Basin.

Associated Design Professionals, Inc. has reviewed the as-built survey for the basin. Based on information gathered during periodic site visits to the project during significant/key phases of the stormwater EDB installation, Associated Design Professionals, Inc. is of the opinion that the stormwater EDB has been constructed in general compliance with the approved Erosion and Stormwater Quality Control Plan, Construction Plans, and Specifications as filed with the County including all components of the outlet structure which were recently installed.

**Statement Of Engineer In Responsible Charge:**

I, Michael A. Bartusek, a registered Professional Engineer in the State of Colorado, in accordance with Sections 5.2 and 5.3 of the Bylaws and Rules of the State Board of Registration for Professional Engineers and Professional Land Surveyors, do hereby certify that I or a person under my responsible charge periodically observed the construction of the above mentioned project. Based on the on-site field observations and review of pertinent documentation, it is my professional opinion that the required permanent EDB has been installed and are in general compliance with the approved Erosion and Stormwater Quality Control Plan, Construction Plans, and Specifications as filed with El Paso County. For BMPs with a Water Quality Capture Volume (WQCV).

Michael A. Bartusek, P.E.  
Colorado No. 23329

**PLATTE VALLEY, LLC  
1378 PROMONTORY BLUFF VIEW  
COLORADO SPRINGS CO 80921**



April 9, 2020

Mr. Brad Walters  
Inspections Supervisor  
Planning and Community Development Department  
El Paso County  
2880 International Circle, Suite 110  
Colorado Springs CO 80910

Re: Appaloosa Hwy 24 Subdivision Filing No 1A

Dear Mr. Walters,

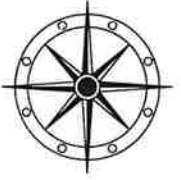
Please accept this letter as a request for a final inspection and initiation of the warranty period for the storm water control improvements in the above identified subdivision.

I'm enclosing the Improvement Certification Letter from the engineer along with a copy of the As Built Pond Detail by Compass Surveying and Mapping.

Thank you for your attention to this request.

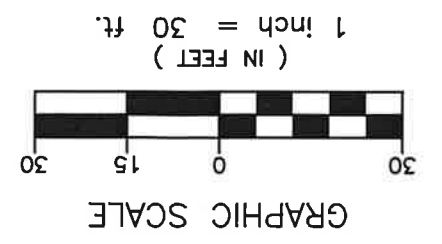
Sincerely,  
Platte Valley LLC

By: \_\_\_\_\_  
Ronald Waldthausen, Manager



COMPASS SURVEYING & MAPPING, LLC  
 721 SOUTH 23RD STREET, SUITE B  
 COLORADO SPRINGS, CO 80904  
 719-354-4120  
 WWW.CSAMLIC.COM

# POND AS-BUILT



PROJECT NO. 19039  
 JANUARY 20, 2020  
 SHEET 1 OF 1

