



**BUCHER DESIGN STUDIO**  
architecture+planning

12325 Oracle Blvd, Suite 111  
Colorado Springs, CO 80921  
(719) 484-0480

Brian K. Bucher, AIA  
Architect  
CO license no. C-4889  
CA license no. C 23506

A PROPOSED  
CORE & SHELL  
BUILDING FOR

WD HOLDINGS  
LLC

10707 MALTESE POINT  
FEYTON, CO 80631

Sheet Title:  
EXTERIOR  
ELEVATIONS

Drawing Status:  
DEVELOPMENT  
PLAN

Revisions:

No.	Description	By	Date
1			

All ideas, designs, arrangements and plans indicated or represented by this drawing are owned by, and the property of BUCHER DESIGN STUDIO and were created, evolved and developed for use on, and in conjunction with, the specified project. None of such ideas, designs, arrangements or plans shall be used by or disclosed to any person, firm or corporation for any purpose whatsoever without the written permission of BUCHER DESIGN STUDIO.

Date: 06/21/2024

Drawn by:

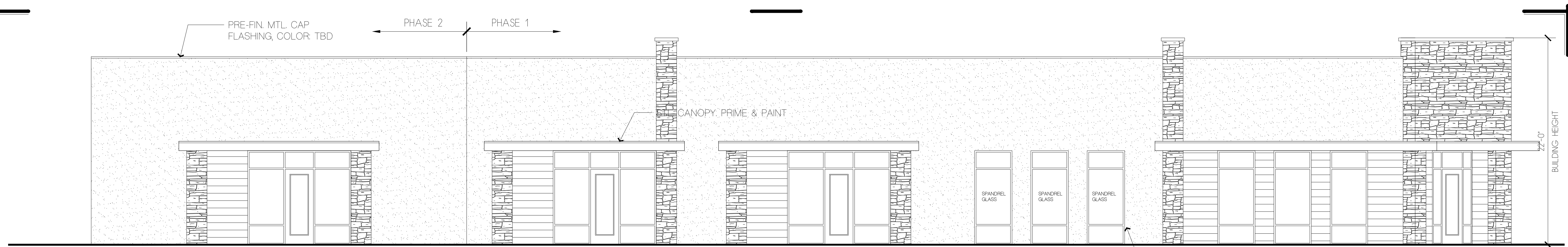
Checked by:

Scale: AS NOTED

Job No.:

Sheet No.:  
**DP3**  
Of

PCD FILE NO. PPR2414



**WEST ELEVATION**  
SCALE: 3/16" = 1'-0"

PRE-FIN. MTL. CAP FLASHING, COLOR: TBD

PHASE 2

PHASE 1

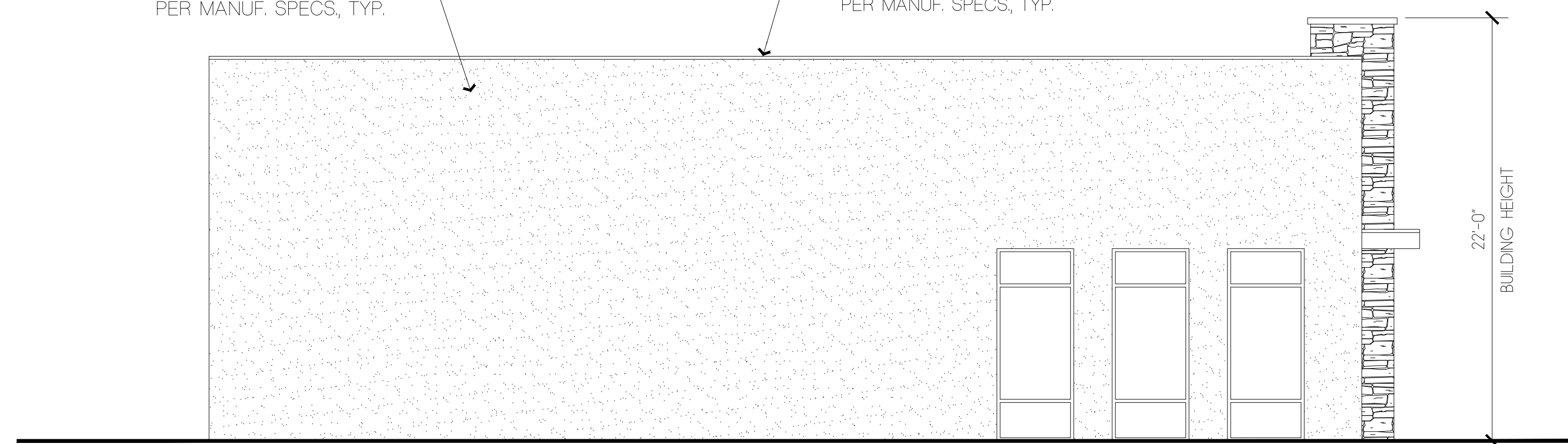
CANOPY, PRIME & PAINT

SPANDREL GLASS

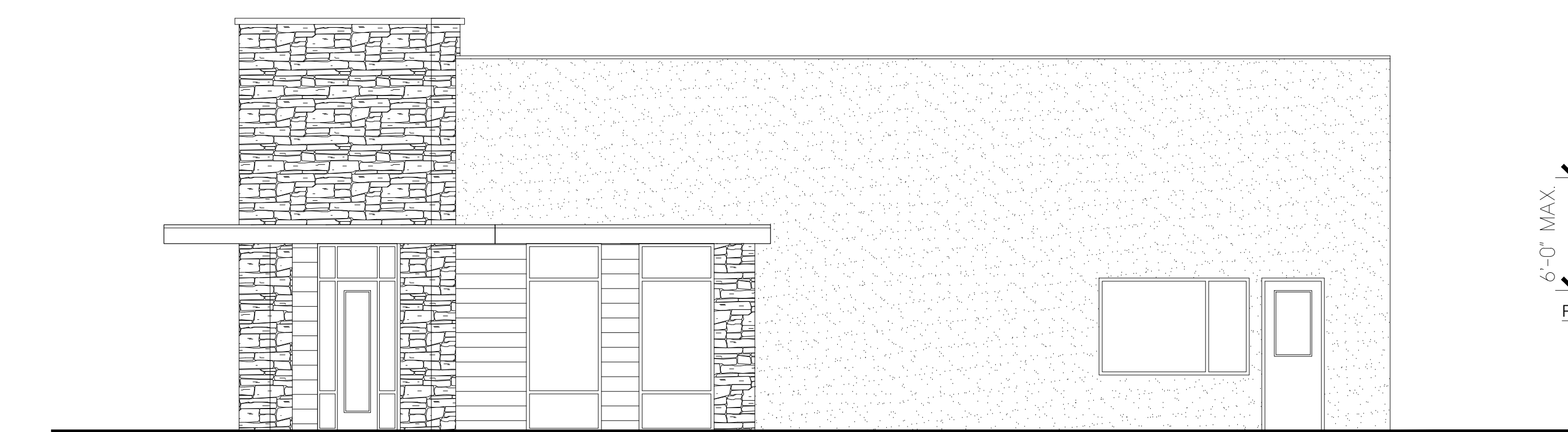
PRE-FINISHED EXTERIOR CLADDING PER MFG. SPECS, TYP.

EXT. FINISH: EXT. CEM. PLASTER SYSTEM (CEMENTITIOUS BLEND) PER MANUF. SPECS, TYP.

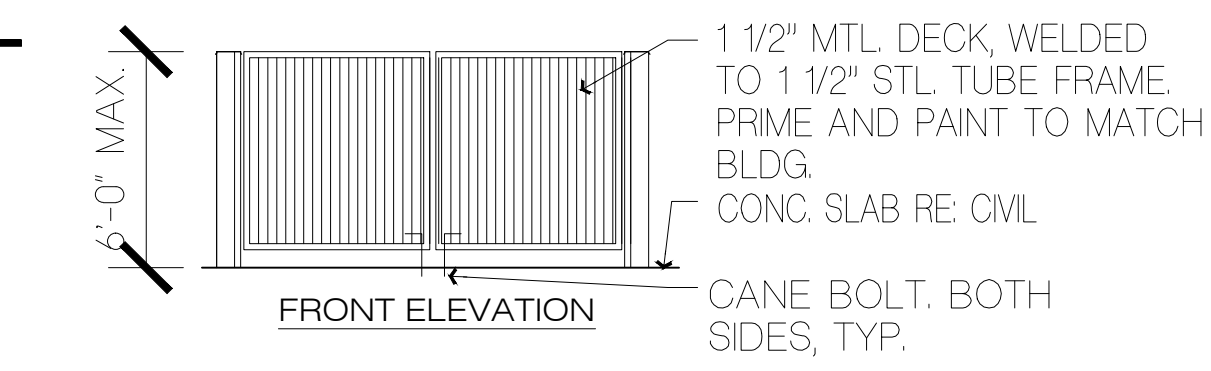
ENGINEERED STONE VENEER SYSTEM. INSTALL PER MANUF. SPECS, TYP.



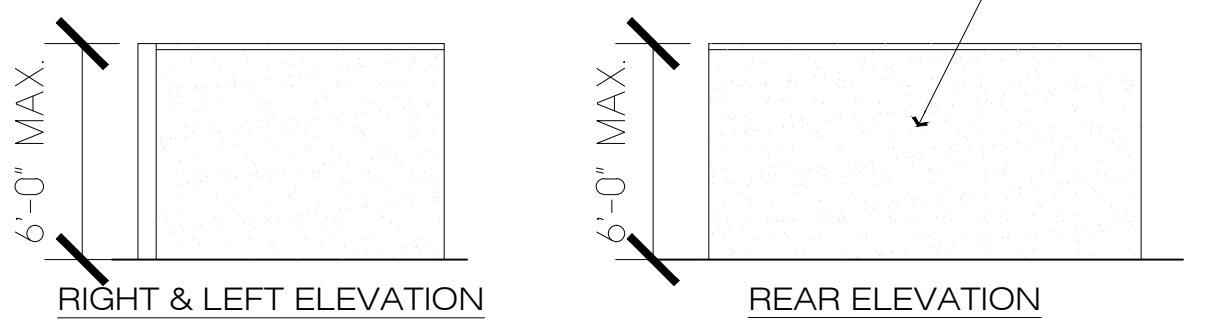
**NORTH ELEVATION**  
SCALE: 3/16" = 1'-0"



**SOUTH ELEVATION**  
SCALE: 3/16" = 1'-0"

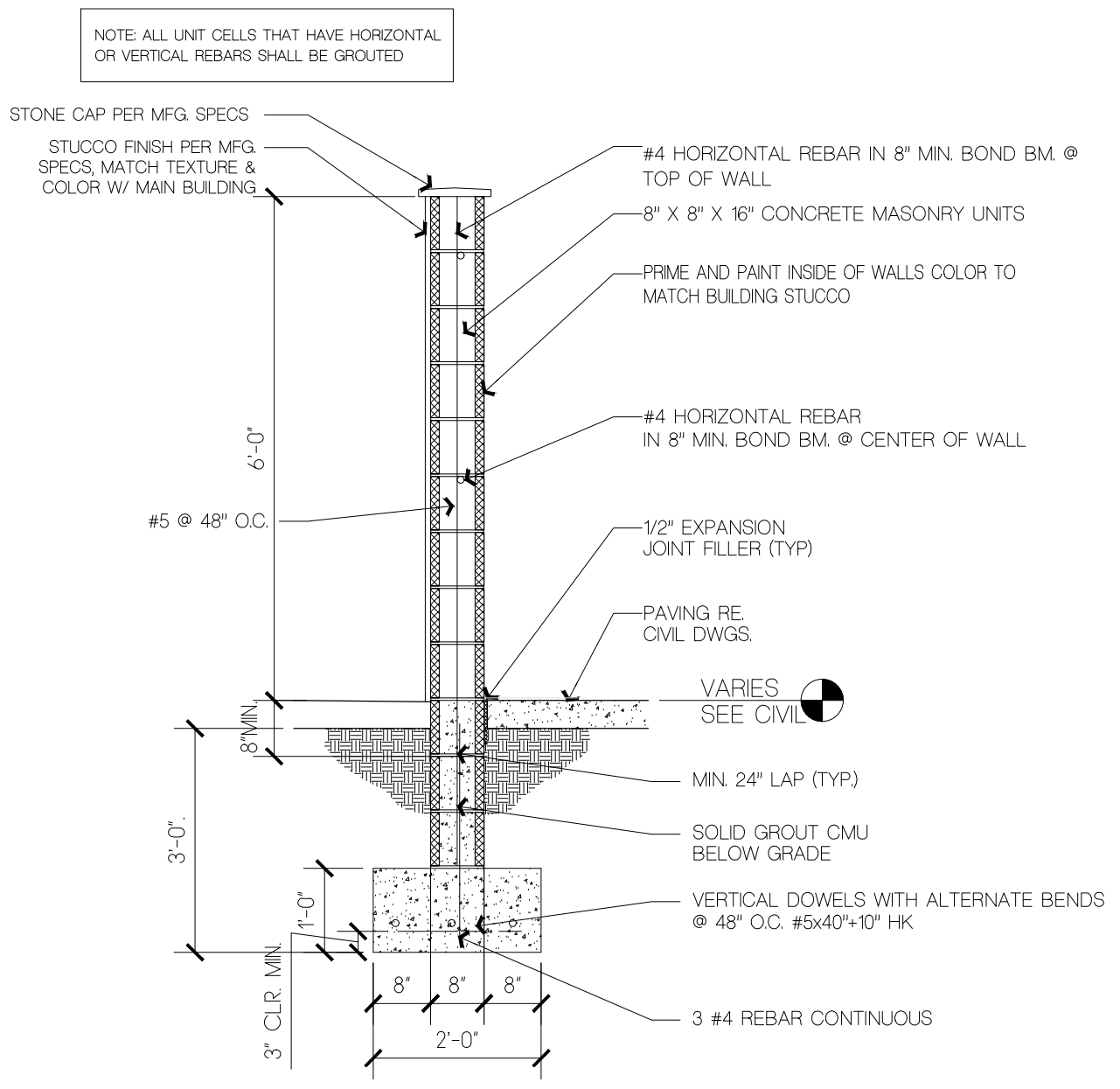


**FRONT ELEVATION**  
SCALE: 3/16" = 1'-0"

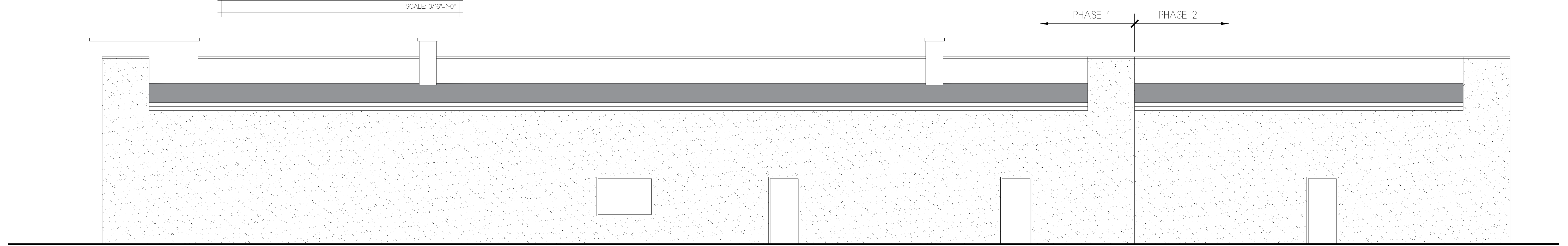


**REAR ELEVATION**  
SCALE: 3/16" = 1'-0"

**TRASH ENCLOSURE ELEVATIONS**  
SCALE: 3/16" = 1'-0"



**TRASH ENCLOSURE DETAIL**  
SCALE: 1/2" = 1'-0"



**EAST ELEVATION**  
SCALE: 3/16" = 1'-0"