

PARCEL NO.  
5311101004

PARCEL NO.  
5311101005

PARCEL NO.  
5311101006

PARCEL NO.  
5311101007

PARCEL NO. 5311101011

PARCEL NO. 5311101013

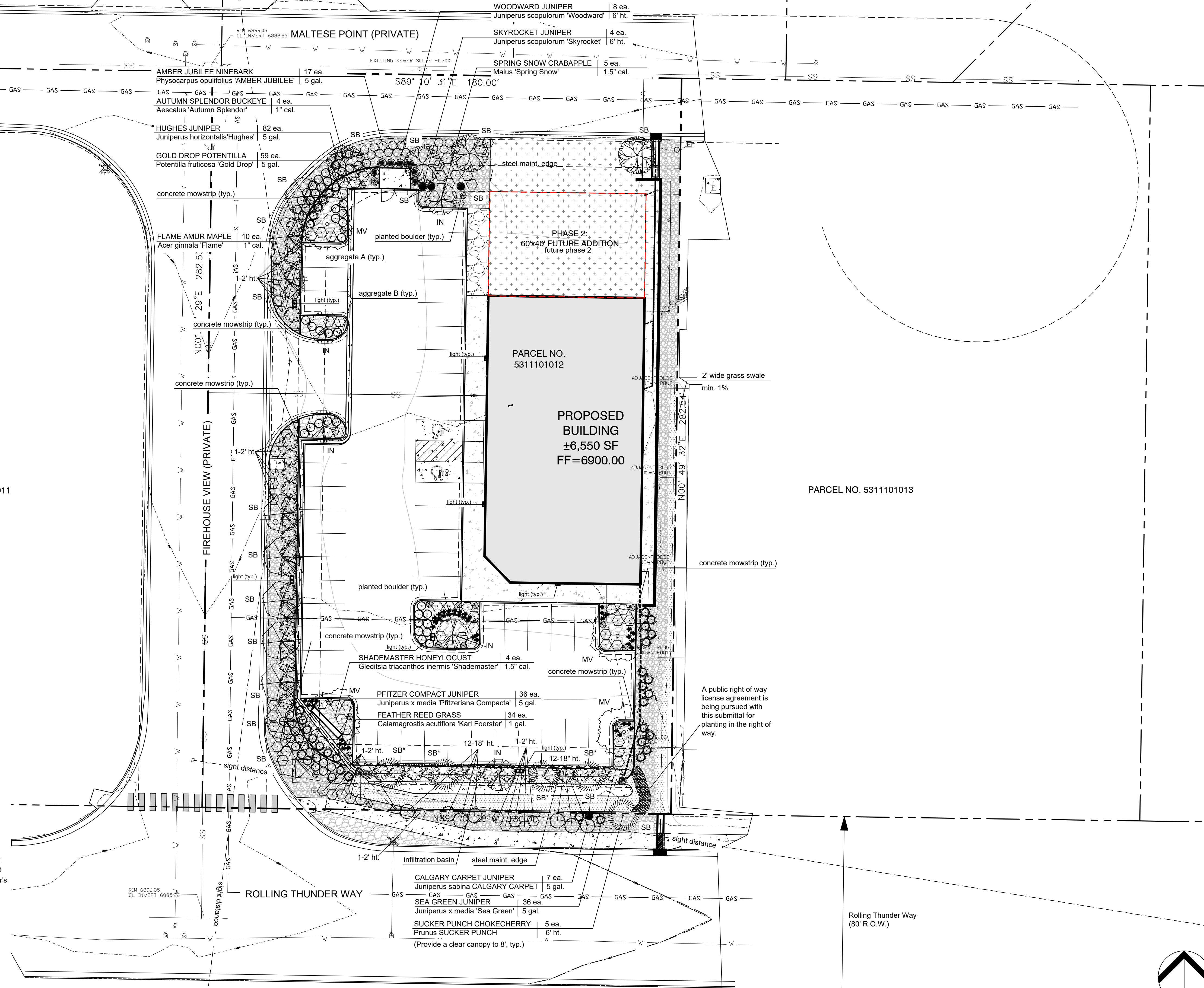
### SITE CATEGORY CALCULATIONS

| LANDSCAPE SETBACKS<br>(or Double Frontage Lot Streetscapes) |  |  |  |   |                              |
|---|--|--|--|---|------------------------------|
| Street Name or Zone Boundary (elev.)                        | Street or Zone Boundary Classification           | Setback Width (ft.) Req./Prov.         | Linear Footage                                 | Tree/Foot Req./Prov.                      | No. of Trees Req./Prov.      |
| NON ARTERIAL  | MALTESE POINT                                    | 10' / 10'                              | 156'   | 1 / 30'                                   | 6 / 6                        |
| NON ARTERIAL  | FIREHOUSE VIEW                                   | 10' / 11'                              | 283'   | 1 / 30'                                   | 10 / 10                      |
| NON ARTERIAL  | ROLLING THUNDER WAY                              | 10' / 16'                              | 156'   | 1 / 30'                                   | 6 / 6                        |
| Shrub Substitutes Required / Provided                       | Ornamental Grass Substitutes Required / Provided | Setback Plant Abbr. Denoted on Plan    | Percent Ground Plane Veg. Req. / Provided      |   |                              |
| NA  | NA   | SB                                     | 75% / 75%                                      |   |                              |
| MOTOR VEHICLE LOTS  |  |  |  |   |                              |
| No. of Vehicle Spaces Provided                              | Shade Trees (1/15 Spaces) Required / Provided    | Vehicle Lot Frontage (s)               | Length of Frontage (ft.) (excluding driveways) | 2/3 Length of Frontage (ft.)              | 2/5 Length of Frontage (ft.) |
| 46  | 4 / 4  | NORTH WEST SOUTH                       | 367'   | 245'                                      | 245'                         |
| Min. 3' Screening Plants Req./Prov.                         | Evergreen Plants Req.(50%) / Prov.               | Length of Screening Wall Provided      | Vehicle Lot Plant Abbr. on Plan                | Percent Ground Plane Veg. Req. / Provided |                              |
| 37 / 37   | 50% / 100%                                       | NA                                     | MV   | 75% / 75%                                 |                              |
| INTERNAL LANDSCAPING  |  |  |  |   |                              |
| Net Site Area (SF) (less public R.O.W.)                     | Percent Min. Internal Area (%)                   | Internal Area (SF) Required / Provided | Internal Trees (1/500 SF) Required / Provided  |   |                              |
| 50,965 SF (1.17 ac)   | 5%   | 2,549 / 2,757 (5%)                     | 5 / 5  |   |                              |
| Shrub Substitutes Required / Provided                       | Ornamental Grass Substitutes Required / Provided | Internal Plant Abbr. Denoted on Plan   | Percent Ground Plane Veg. Req. / Provided      |   |                              |
| NA  | NA   | IN                                     | 50% / 50%                                      |   |                              |

Re. driveway exiting into Fire House View: per Table 2-35 of the El Paso County Engineering Criteria Manual (ECM), the entering sight distance for a two lane roadway with a posted speed of 25 miles per hour is 250 feet. For calculating sight distance, a height of 3.5 feet is used for the driver's eyes at the access location and a height of 3.5 feet for the oncoming vehicle. The entering driver's eyes shall be 10 feet behind the edge of the roadway. These criteria are found in 2.4 Roadway Access Design of the ECM. Pursuant to 2.3.6.G.2, the proposed shrubs within the sight distance triangle have a mature height of 1' to 2'. This is under the threshold of 30' above the flowline elevation of the adjacent roadway.

Re. driveway exiting south from Fire House View to Rolling Thunder Way: per Table 2-21 of the El Paso County Engineering Criteria Manual (ECM), the intersection sight distance is measured from a point on the minor road at 13 feet back from the edge of the major road pavement and measured from a height of eye at 3.5 feet on the minor road to a height of object at 3.5 feet on the major road. In this case, the sight distance was derived from a point 13 feet back from the pedestrian marker striping and stop sign. The posted speed of the road is 35 m.p.h., so a distance of 390 feet was interpolated between the value of 335 feet at 30 m.p.h. and 445 feet at 40 m.p.h.

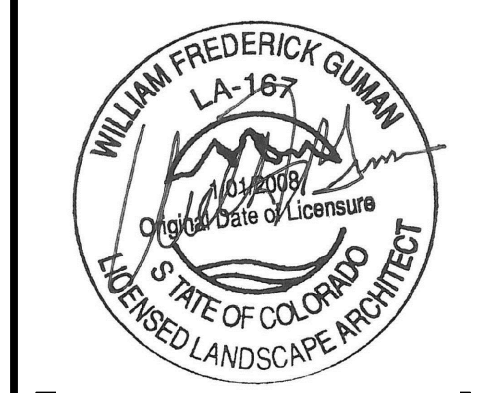
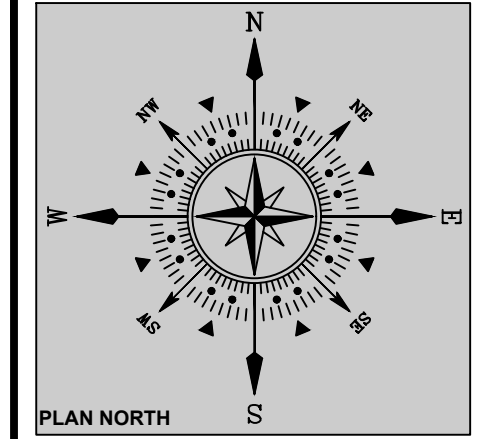
\* Four (4) setback category trees were relocated to the south parking bay due to sight triangle and drainage conflicts.



©2024 This drawing is an instrument of service and as such remains the exclusive property of William Gunn & Associates, Ltd. No reproduction or modification of this drawing without prior consent from Gunn is prohibited under all applicable intellectual property laws.

The drawing is preparatory to the final design and quantities which can be determined graphically shall prevail over schedule, notes, or printed quantities. Field changes made without prior approval by the drawing designer of the record drawing may result in delay of field operations. No reliance is to be placed on this drawing where it conflicts with the original contract documents.

Only drawings which bear the official stamp of the licensed landscape architect in the state in which the drawing is issued are intended for construction purposes.



# MALTESE POINT - ROLLING THUNDER PEYTON, CO

PROJECT NAME:  
PROJECT ADDRESS:  
PROJECT DESCRIPTION:

|                |                       |
|----------------|-----------------------|
| DATE PREPARED: | 03/29/24              |
| DESIGNED BY:   | GEM                   |
| CHECKED BY:    | WFG                   |
| DATE BY:       |                       |
| REVISIONS:     |                       |
| DATE BY:       | DESCRIPTION:          |
| 5/21/24        | GEM RESPOND TO COUNTY |
| 7/18/24        | GEM RESPOND TO COUNTY |
| 8/12/24        | GEM RESPOND TO COUNTY |

NOTES:

### SHEET TITLE: LANDSCAPE PLAN

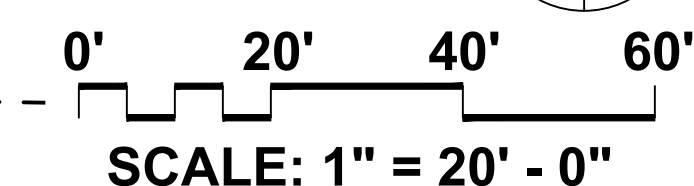
PLAN SCALE: 1"=20'-0"

SHEET NO.

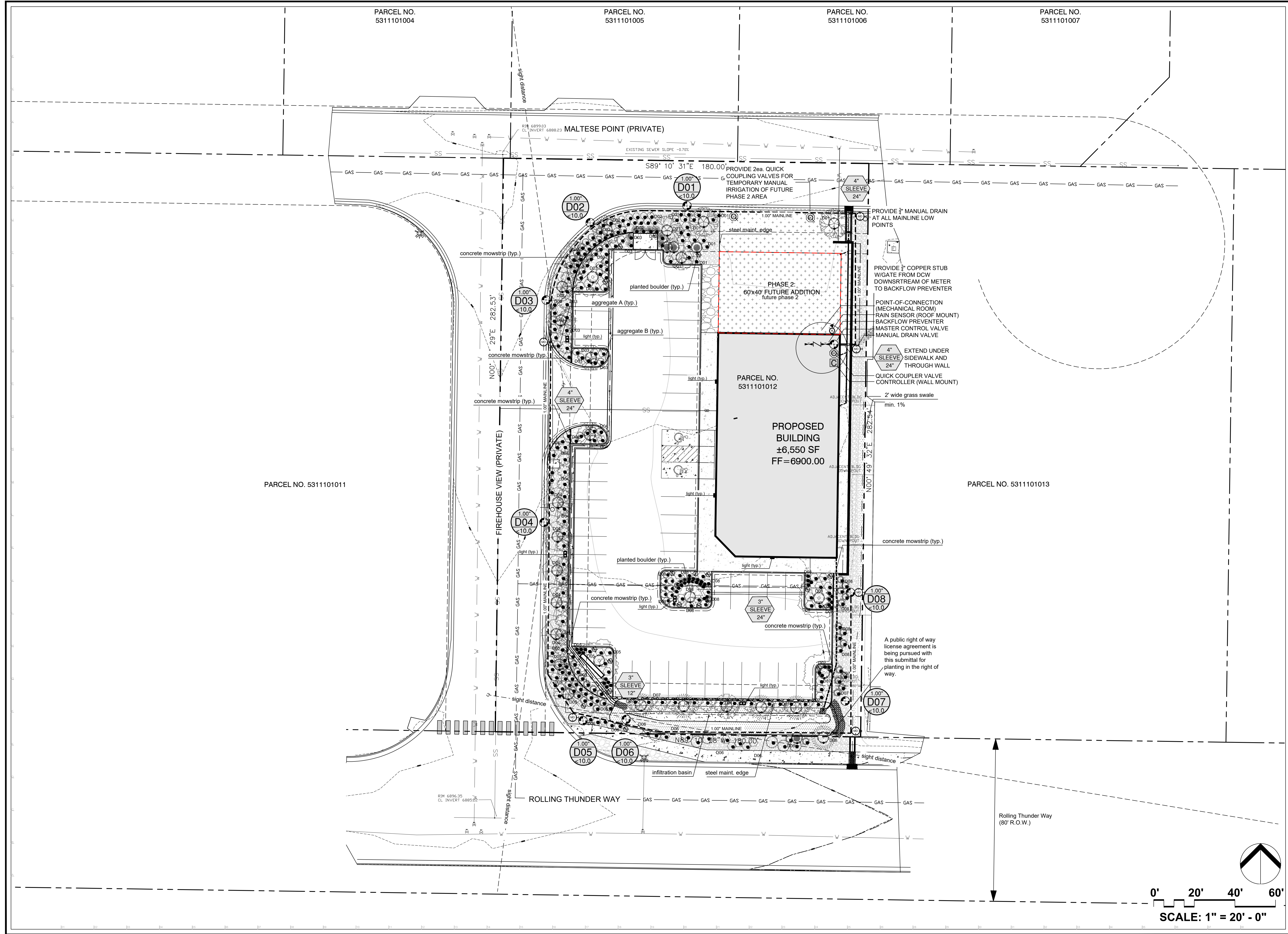
# LS1.0

1 of 3 SHEETS

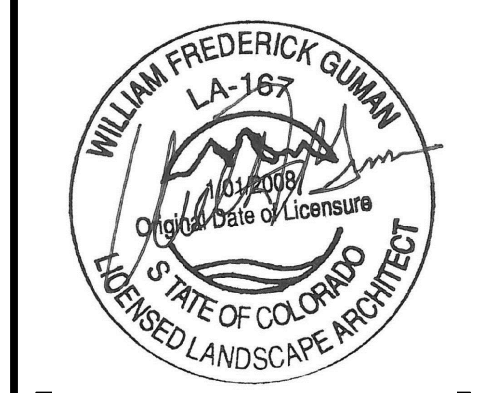
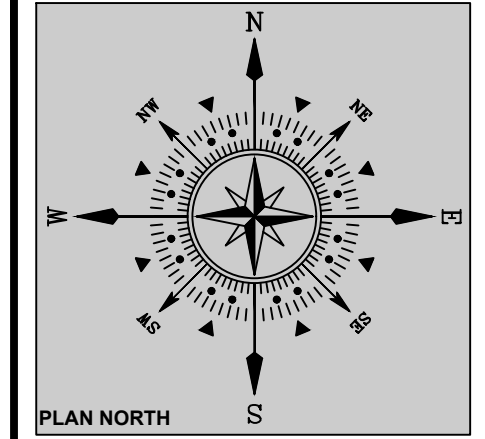
PCD FILE NO.  
PPR 2414







©2024 This drawing is an instrument of service and as such remains the exclusive property of William Gunn & Associates, Ltd., whether work for which it was prepared is executed or not. Reproduction or unauthorized use of this drawing without prior consent from Gunn is prohibited under all applicable intellectual property laws.  
 This drawing is preparatory to the event of a specific contract which can be determined graphically shall prevail over schedule, notes, or printed quantities. Field changes made without prior approval by the controlling signature of the record drawing may result in delay of field operations. No field issuance of a certificate of occupancy shall be issued.  
 Only drawings which bear the official stamp of the licensed landscape architect in the state in which the drawing is issued are intended for construction purposes.



**MALTESE POINT -  
 ROLLING THUNDER  
 PEYTON, CO**

PROJECT NAME:  
 PROJECT ADDRESS:  
 PROJECT DESCRIPTION:

|                |                       |
|----------------|-----------------------|
| DATE PREPARED: | 03/29/24              |
| DESIGNED BY:   | GEM                   |
| CHECKED BY:    | WFG                   |
| REVISIONS:     |                       |
| DATE:          | DESCRIPTION:          |
| 5/21/24        | GEM RESPOND TO COUNTY |

|  |  |
|--|--|
|  |  |
|  |  |
|  |  |
|  |  |
|  |  |

NOTES:

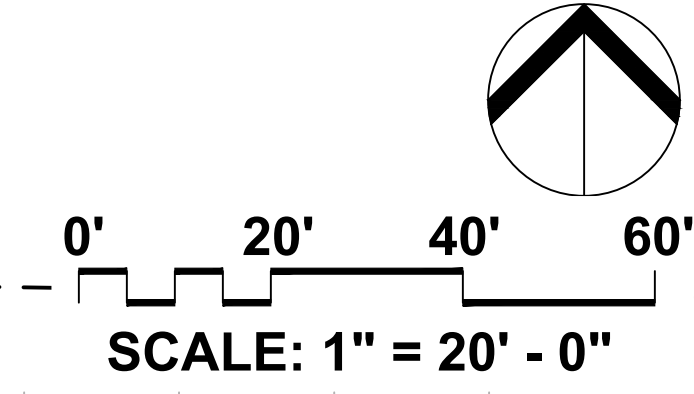
SHEET TITLE:  
**IRRIGATION PLAN**

PLAN SCALE: 1"=20'0"

SHEET NO.

**LS2.0**  
 2 OF 3 SHEETS

PCD FILE NO.  
**PPR 2414**





**LANDSCAPE SCHEDULE (Outlying Areas):**  
Planting Schedule:

| SYMBOL   | QTY | KEY   | DROUGHT TOLERANT (DEER RESISTANT) | BOTANICAL/COMMON NAME                                | MATURE HT. (W.D.) | PLANTING SIZE | NOTES  |
|----------|-----|-------|-----------------------------------|--|-------------------|---------------|--|
| (Symbol) | 4   | (Key) | (Water)                           | SHADBLEED MONARDELLA (Spotted Tassel Top Monardella) | 40-50'<br>30-40'  | 1.5' cal.     | B&B Nursery Green. Size to meet or exceed AAN, min. size |
| (Symbol) | 5   | (Key) | (Water)                           | SPRING SNOWCRABAPPLE (Malus Spring Snow)             | 20-30'<br>20-25'  | 1.0' cal.     | B&B Nursery Green. Size to meet or exceed AAN, min. size |
| (Symbol) | 5   | (Key) | (Water)                           | SUCKER PUNCH CHOCOCHEERRY (Phytolacca Sucker Punch)  | 20-30'<br>15-25'  | 1.0' cal.     | B&B Nursery Green. Size to meet or exceed AAN, min. size |
| (Symbol) | 10  | (Key) | (Water)                           | FLAME ANEMONE (Anemone)                              | 15-20'<br>10-20'  | 1.0' cal.     | B&B Nursery Green. Size to meet or exceed AAN, min. size |
| (Symbol) | 4   | (Key) | (Water)                           | AUTUMN SLENDER BUCKEYE (Aesculus Autumn Splendor)    | 20-25'<br>20-25'  | 1.0' cal.     | B&B Nursery Green. Size to meet or exceed AAN, min. size |
| (Symbol) | 4   | (Key) | (Water)                           | SKYROCKET JUNIPER (Juniperus squarrosa Skyrocket)    | 15-20'<br>2-4'    | 6" ht.        | B&B Nursery Green. Size to meet or exceed AAN, min. size |

| SYMBOL   | QTY | KEY   | DROUGHT TOLERANT (DEER RESISTANT) | BOTANICAL/COMMON NAME  | MATURE HT. (W.D.) | PLANTING SIZE | NOTES  |
|----------|-----|-------|-----------------------------------|--|-------------------|---------------|--|
| (Symbol) | 8   | (Key) | (Water)                           | WOODWARD JUNIPER (Juniperus scopulorum Woodward)                 | 15-20'<br>2-4'    | 6" ht.        | Container Green. Size to meet or exceed AAN, min. size |
| (Symbol) | 36  | (Key) | (Water)                           | SEA GREEN JUNIPER (Juniperus media Sea Green)                    | 6-8'<br>6-8'      | 5" gpm.       | Container Green. Size to meet or exceed AAN, min. size |
| (Symbol) | 59  | (Key) | (Water)                           | GOLD DROP POTENTILLA (Phytolacca frutescens Gold Drop)           | 2-3'<br>2-3'      | 5" gpm.       | Container Green. Size to meet or exceed AAN, min. size |
| (Symbol) | 82  | (Key) | (Water)                           | HUGHES JUNIPER (Juniperus horizontalis Hughes)                   | 1-2'<br>4-6'      | 5" gpm.       | Container Green. Size to meet or exceed AAN, min. size |
| (Symbol) | 36  | (Key) | (Water)                           | FITZGER JUNCUS (Juniperus media Fitzger Juncus)                  | 3-4'<br>4-6'      | 5" gpm.       | Container Green. Size to meet or exceed AAN, min. size |
| (Symbol) | 17  | (Key) | (Water)                           | JAMBER JUBILEE NINEBARB (Physocarpus opulifolius JAMBER JUBILEE) | 2-4'<br>3-4'      | 5" gpm.       | Container Green. Size to meet or exceed AAN, min. size |
| (Symbol) | 7   | (Key) | (Water)                           | CALGARY CARPET JUNIPER (Juniperus sibirica CALGARY CARPET)       | 12-18'<br>6-8'    | 5" gpm.       | Container Green. Size to meet or exceed AAN, min. size |

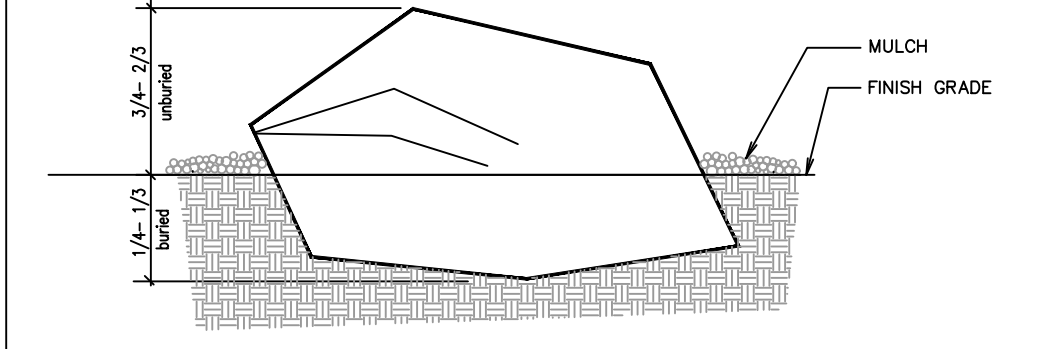
| SYMBOL   | QTY | KEY   | DROUGHT TOLERANT (DEER RESISTANT) | BOTANICAL/COMMON NAME                                      | MATURE HT. (W.D.) | PLANTING SIZE | NOTES  |
|----------|-----|-------|-----------------------------------|--|-------------------|---------------|--|
| (Symbol) | 34  | (Key) | (Water)                           | FEATHER REED GRASS (Calamagrostis canadensis Feather Reed) | 3-5'<br>2-3'      | #1            | Container Green. Size to meet or exceed AAN, min. size |

**SYMBOL KEY:**

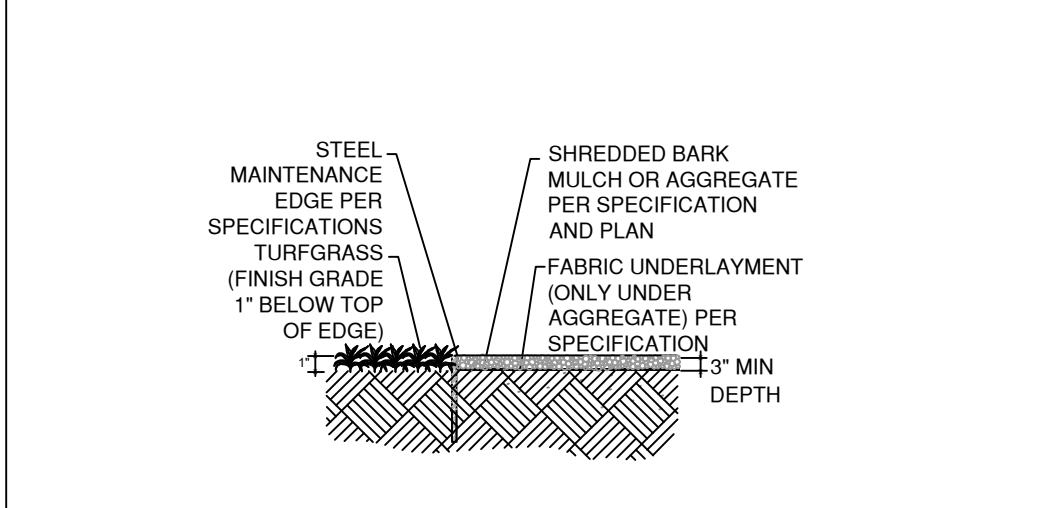
| SYMBOL   | DESCRIPTION/REMARKS   |
|----------|---|
| (Symbol) | STEEL MAINTENANCE EDGE; 3/16" x 4" ROLL TOP STEEL, GREEN COLOR  |
| (Symbol) | CONCRETE MOWSTRIP   |
| (Symbol) | ORGANIC MULCH TYPE 'A': DECO SHRED BARK MULCH, PLACED TO A UNIFORM 3" DEPTH ON FABRIC UNDERLAYMENT (Equal to that supplied by Pioneer Sand and Gravel, Colorado Springs, CO)  |
| (Symbol) | AGGREGATE 'A': 1-1/2" SIZE BRECKEN GOLD ROCK PLACED TO A UNIFORM DEPTH OF 3" ON FABRIC UNDERLAYMENT (Equal to that supplied by Pioneer Sand and Gravel, Colorado Springs, CO) AREA: 6,180 SQUARE FEET   |
| (Symbol) | AGGREGATE 'B': 2"-4" SIZE GREY ROSE COBBLE RIVER ROCK PLACED TO A UNIFORM DEPTH OF 8" ON FABRIC UNDERLAYMENT (Equal to that supplied by Pioneer Sand and Gravel, Colorado Springs, CO) AREA: 2,527 SQUARE FEET  |
| (Symbol) | SEEDED TURF (E Paso County Conservation District All-Purpose Mix for Upland, Transition and Permanent Control Measure Areas): 20% BIG BLUESTEM, 10% BLUE GRAMA, 10% GREEN NEEDLEGRASS, 20% WESTERN WHEATGRASS, 10% SIDEGRASS GRAMA, 10% SWITCHGRASS, 10% PRAIRIE SAND REED, 10% YELLOW INDIAN GRASS) Seed rate (lbs PL/acre): 19.3 irrigated broadcast or irrigated hydrosseeded. AREA: 1,437 SQUARE FEET |
| (Symbol) | SEEDED TURF (E Paso County All-Purpose Low Grow Mix for Upland and Transition Areas): 25% BUFFALOGRASS, 20% BLUE GRAMA, 20% SIDEGRASS GRAMA, 5% GREEN NEEDLEGRASS, 20% WESTERN WHEATGRASS, 1% SAND DROPSSEED) Seed rate (lbs PL/acre): 42.0 irrigated broadcast or irrigated hydrosseeded. AREA: 3,973 SQUARE FEET  |
| (Symbol) | PLANTED BOULDERS: Equal to Stearn quarried boulders (Canon City, CO), avg. 3' width, set in grade w/ 18-24" ht. exposed above grade (Per Detail).   |
| (Symbol) | IDHO CEDAR WOOD MULCH: UNIFORM Y PLACED TO A 4" DEPTH AROUND ALL TREE ROOT BALLS IN TURF AREAS ONLY (Equal to that supplied by Pioneer Sand and Gravel, Colorado Springs, CO) AREA: 217 SQUARE FEET   |

**LANDSCAPE NOTES:**

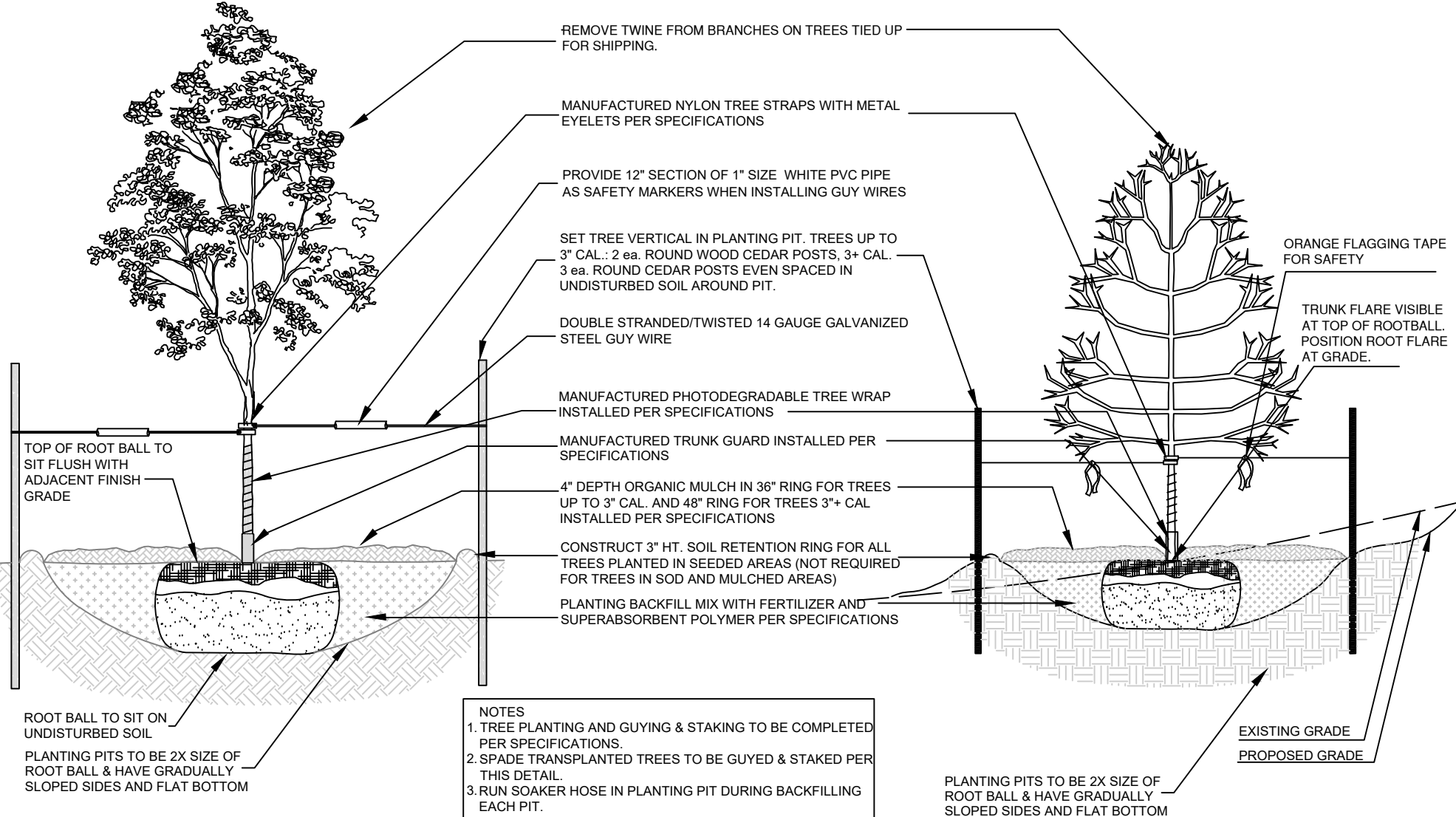
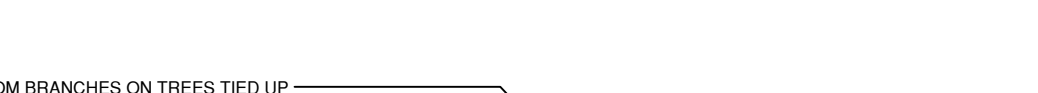
- DRAWINGS ARE DIAGRAMMATIC. PRECISE PLACEMENT OF LANDSCAPE ACCESSORIES MAY NOT BE POSSIBLE AS INDICATED. CONSULT PROJECT LANDSCAPE ARCHITECT PRIOR TO MAKING RANDOM FIELD CHANGES WHICH MAY ALTER DESIGN INTENT.
- QUANTITIES ARE PROVIDED FOR REFERENCE ONLY. VERIFY ALL QUANTITIES PRIOR TO SUBMITTING COST PROPOSAL. IN THE EVENT OF A CONFLICT BETWEEN SCHEDULED, IMPLIED, OR EXPRESSED QUANTITIES, QUANTITIES WHICH CAN BE DETERMINED GRAPHICALLY FROM THE DRAWINGS WILL PREVAIL IN ANY CASE.
- THE CONTRACTOR IS RESPONSIBLE FOR INSPECTING AND VERIFYING ALL FIELD CONDITIONS AND RESOLVING CONFLICTS PERTAINING TO DIMENSIONS, LAYOUT, ETC. WHICH MAY AFFECT THE LANDSCAPE INSTALLATION. MOBILIZING SHALL BE CONSTRUCTED AS ACCEPTANCE OF CONDITIONS.
- COORDINATE ALL WORK INDICATED ON THESE DRAWINGS WITH WORK OF OTHER TRADES.
- THE PROJECT LANDSCAPE ARCHITECT RESERVES THE RIGHT TO CONSIDER AND APPROVE ALTERNATE INSTALLATIONS AT ANY TIME WHICH IN THE LANDSCAPE ARCHITECT'S OPINION MAXIMIZES THE CONSTRUCTION BUDGET AND MAINTAINS DESIGN INTENT.
- PROVIDE A 3 FOOT CLEAR SPACE AROUND THE CIRCUMFERENCE AROUND ALL FIRE HYDRANTS AND LIGHTING STANDARDS.
- CONTRACTOR TO UTILIZE STOCKPILED TOPSOIL FROM GRADING OPERATION AS MAY BE AVAILABLE. IF THE AMOUNT OF TOPSOIL NEEDED TO COMPLETE FINAL GRADING IS NOT AVAILABLE, THE CONTRACTOR SHALL IMPORT THE AMOUNT OF SOIL NEEDED.
- CONTRACTOR SHALL ENSURE THAT PROPER IRRIGATION VIA THE IRRIGATION SYSTEM IS CAPABLE OF EXTENDING AMOUNTS OF WATER REQUIRED TO ESTABLISH AND SUSTAIN PLANT GROWTH AT THE TIME OF INSTALLATION.
- UPON APPROVAL OF THE FINAL LANDSCAPE PLAN, AN IRRIGATION PLAN WILL BE PROVIDED.
- AN AUTOMATIC UNDERGROUND IRRIGATION SYSTEM IS TO BE PROVIDED AND INSTALLED IN ACCORDANCE WITH THE IRRIGATION SYSTEM DRAWING AND SPECIFICATIONS.
  - IN LANDSCAPE SETBACK AREAS ALONG ROAD FRONTAGES; IN-LINE DRIP EMITTER RINGS FOR ALL TREES
  - NEW SOODED TURF INTERIOR LANDSCAPE AREAS; 20' ROTOR SPRINKLERS AND POP-UP SPRAY SPRINKLERS
  - NEW SEEDED TURF AREAS; 30' ROTOR SPRINKLERS AND POP-UP SPRAY SPRINKLERS SHRUBS AND TREES; IN-LINE DRIP EMITTER RINGS FOR ALL TREES; EMITTERS FOR ALL SHRUBS
- SOIL AMENDMENT AND FINAL GRADING FOR ALL SOG AND SEEDED TURF AREAS TO BE PROVIDED IN ACCORDANCE WITH SPECIFICATIONS.
- ALL LANDSCAPE AND IRRIGATION MAINTENANCE SHALL BE COMMENCED BY THE OWNER UPON COMPLETION AND FINAL ACCEPTANCE OF ALL LANDSCAPE AND IRRIGATION SYSTEM INSTALLATIONS.
- 4"x14 GAUGE GALVANIZED STEEL MAINTENANCE EDGING TO BE INSTALLED TO SEPARATE ALL ORGANIC AND AGGREGATE MULCHES FROM ADJACENT SOG AND SEEDED TURF AREAS. PIN EDGING WITH 1/2" STEEL EDGING PINS AT 24" SPACING.
- ALL PLANT MATERIAL TO BE INSTALLED PER DETAILS AND SPECIFICATIONS. GUY AND STAKE ALL DECIDUOUS AND EVERGREEN TREES PER DETAILS. PROVIDE SHREDDED MULCH RINGS IN RETENTION BASINS AROUND ALL TREES PLANTED IN SOG AND SEEDED AREAS. MULCH RINGS ARE NOT REQUIRED FOR TREES PLANTED IN AGGREGATE GROUNDOVER AREAS.
- PLANT QUANTITIES AND SIZES INDICATED ARE THE MINIMUM TO SATISFY LANDSCAPE CODE REQUIREMENTS. NO SUBSTITUTIONS ARE PERMITTED WITHOUT PRIOR APPROVAL OF THE MUNICIPAL REVIEWING AGENCY.



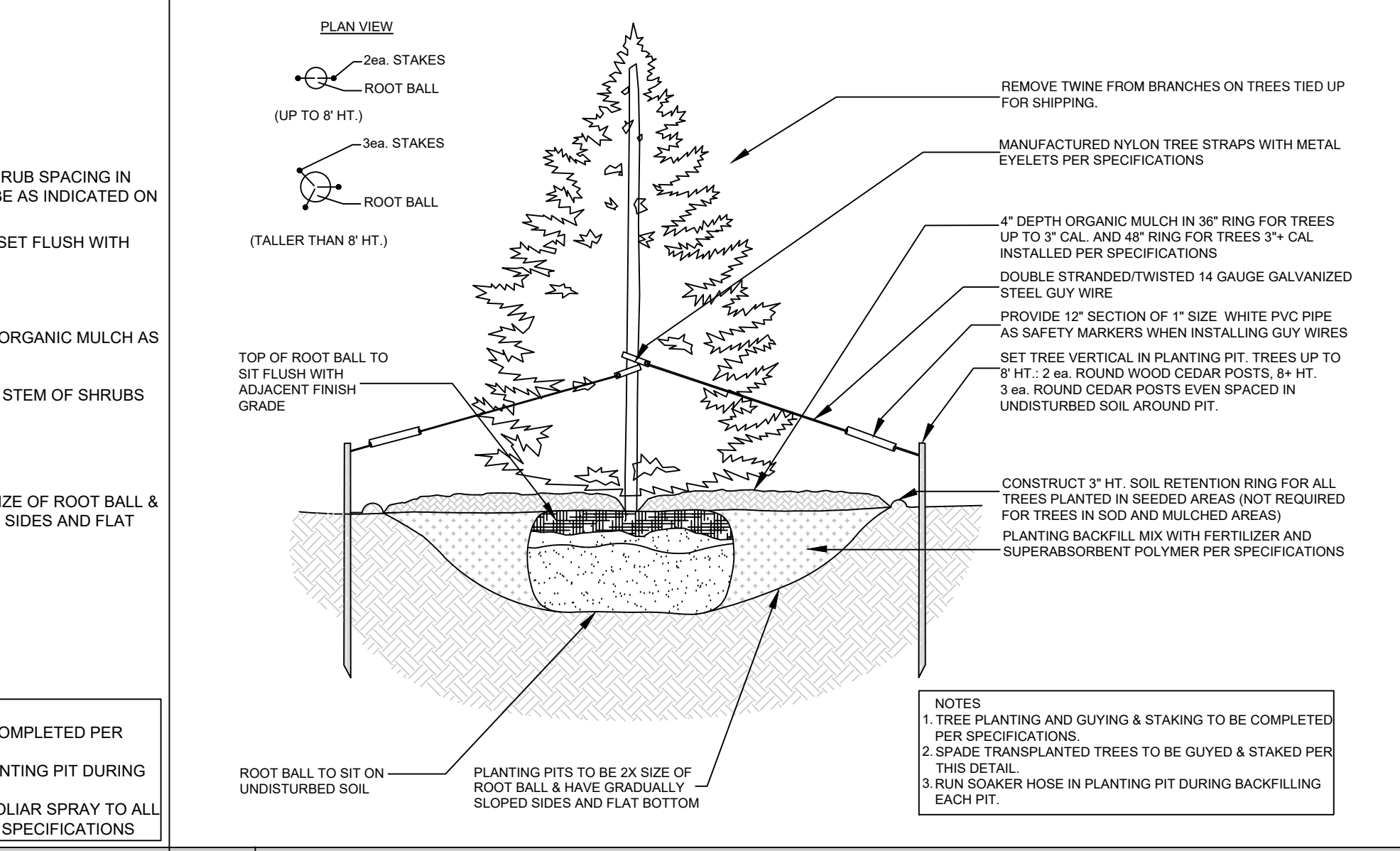
**A PLANTED BOULDER NOT TO SCALE**



**B STEEL MAINTENANCE EDGE NOT TO SCALE**



**C DECIDUOUS TREE PLANTING DETAIL NOT TO SCALE**



**D DECIDUOUS TREE PLANTING (SLOPE) NOT TO SCALE**

**IRRIGATION SCHEDULE:**  
Equipment Schedule:

| SYM.     | SIZE   | DESCRIPTION/REMARKS  |
|----------|--------|--|
| (Symbol) | 8 sta. | RAINBIRD ESP-TM2 8 station WiFi-ready indoor/outdoor automatic controller. Install per manufacturer's instructions   |
| (Symbol) | N.A.   | RAINBIRD WRZRF-C Wireless Rain/Freeze sensor; Install per manufacturer's instructions  |
| (Symbol) | 1.00"  | WATTS 009M2-QT Bronze Reduced Pressure Zone Backflow Assembly, qtr. turn shut-offs, tee handles. Provide and install in mechanical room unheated enclosure per manufacturer's instructions   |
| (Symbol) | 1.00"  | RAINBIRD 100 EFB-CP Brass Control Valve (Master Valve). Install in mechanical room downstream of RPBP per detail sheet   |
| (Symbol) | N.A.   | RAINBIRD PEB Series Plastic Control Valve (Globe Configuration)  |
| (Symbol) | 1.00"  | RAINBIRD XCZ-100-PRBLX Wide Flow Light Commercial Drip Control Zone Kit w/pressure regulator and basket filter. Refer to watering schedule below for proper valve application per drip zone. |
| (Symbol) | 1 gph  | RAINBIRD (XB-T10) 1/2" drip emitters per details for all shrubs and grasses  |
| (Symbol) | 75"    | RAINBIRD 33DRC Quick Coupling Valve w/RB Quick coupling valve key  |
| (Symbol) | 1.00"  | APOLLO VALVES 2-piece standard port brass valve (manual drains)  |
| (Symbol) | 1.00"  | NIBCO T-113 Brass Gate Valve, standard port threaded end (for Reduced Pressure Backflow Preventer)   |
| (Symbol) | 25"    | RAINBIRD 2" XB-10PC SINGLE OUTLET EMITTER on drip tubing emitter stake (per Detail 'F')  |

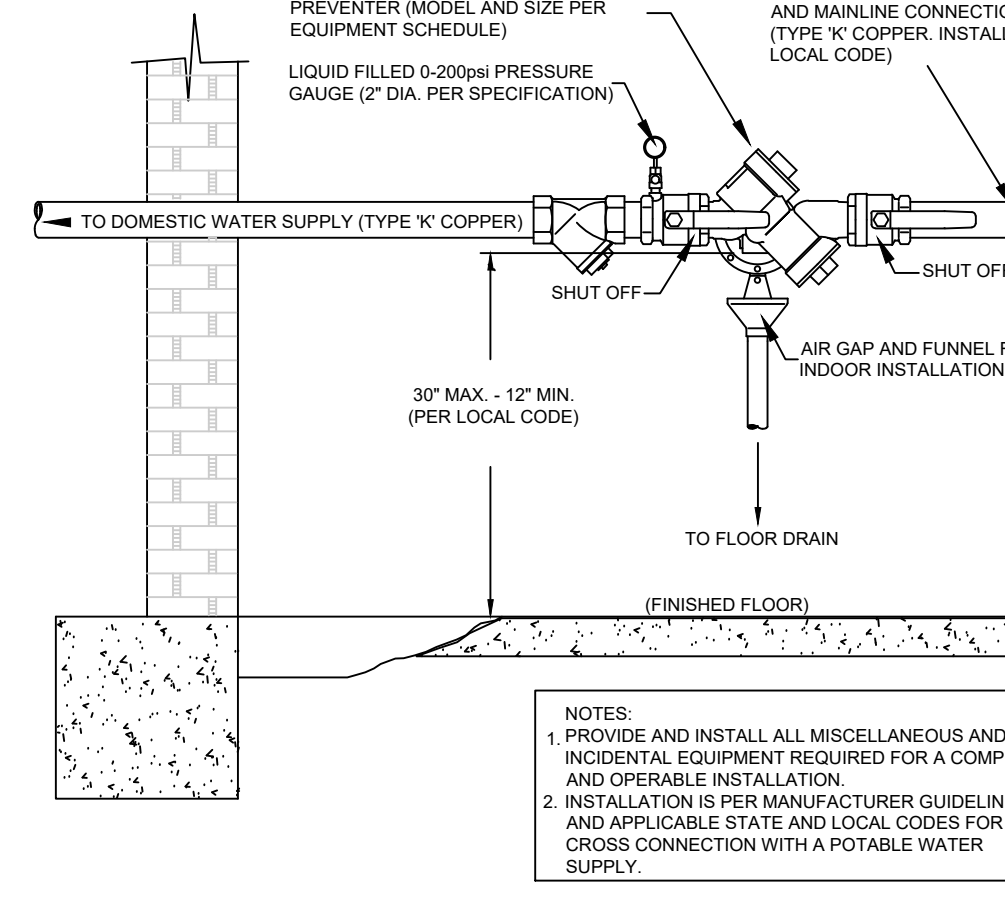
**VALVE SCHEDULE:**

| NO.     | ZONE  | EST. GPM | RUN TIME            | ZONE TYPE                     |
|---------|-------|----------|---------------------|-------------------------------|
| D01-D08 | 01-08 | <10.00   | 2 hrs. ea. x 7 days | Drip emitter / drip tree ring |

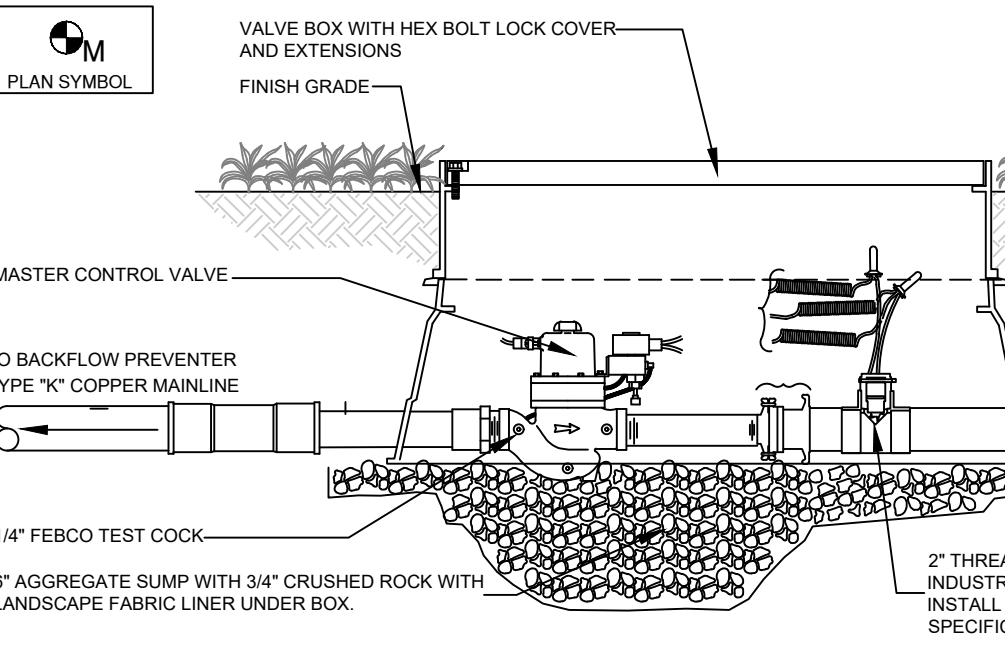
| SYMBOL   | VALVE SIZE | VALVE NO. (TURF) | EST. GPM | VALVE SIZE | VALVE NO. (DRIP) | EST. GPM | VALVE SIZE | VALVE NO. (SEED) | EST. GPM |
|----------|------------|------------------|----------|------------|------------------|----------|------------|------------------|----------|
| (Symbol) | 1.00"      |                  |          | 1.00"      |                  |          | 1.00"      |                  |          |

**IRRIGATION PLAN NOTES:**

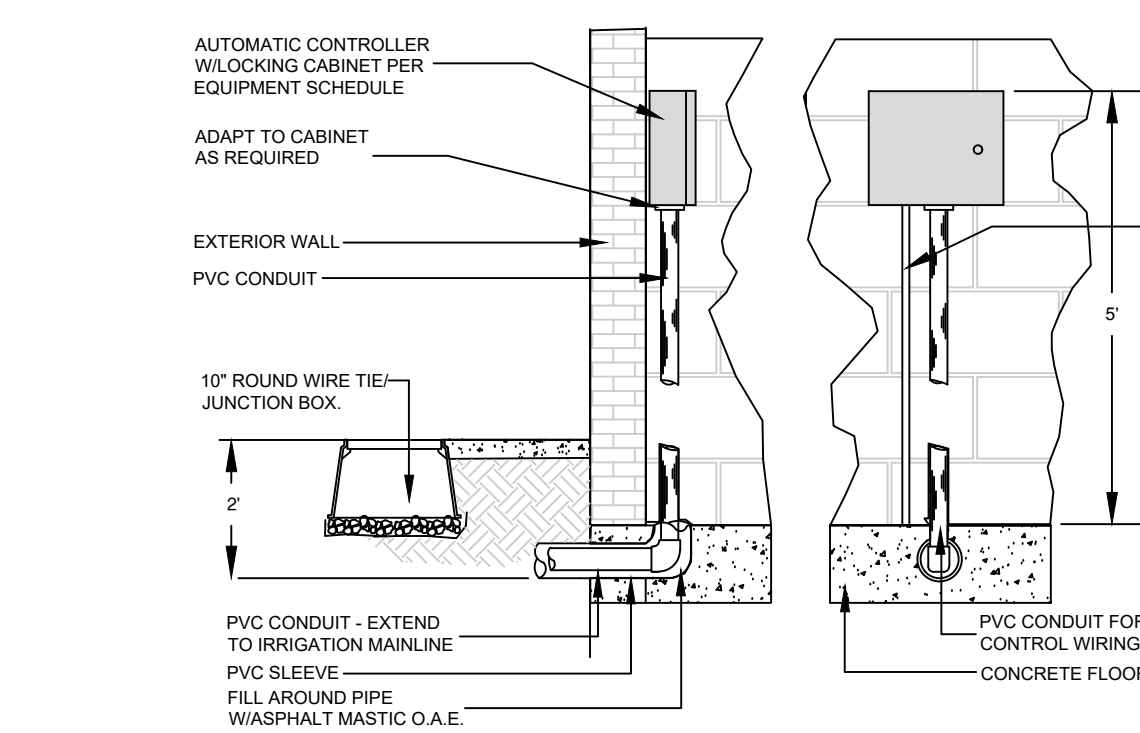
- SCOPE OF WORK SHALL INCLUDE PROVISION OF ALL MISCELLANEOUS AND INCIDENTAL EQUIPMENT TO RESULT IN A COMPLETE AND OPERABLE SYSTEM, WHETHER INDICATED ON THE DRAWINGS OR NOT.
- INSTALLER IS RESPONSIBLE FOR DETERMINING HYDRAULIC FEASIBILITY OF OPERATION OF ALL ZONES AND TO REPORT CONCERNS TO PROJECT ARCHITECT FOR CORRECTION PRIOR TO INSTALLING ANY EQUIPMENT.
- DESIGN PRESSURE: 80psi STATIC AT POINT-OF-CONNECTION, 15psi AT EMITTER LOCATION.
- ALL EQUIPMENT IS TO BE INSTALLED PER THE DRAWINGS, DETAILS, AND ALL LOCAL AND STATE CODES FOR CROSS CONNECTION WITH A POTABLE DOMESTIC WATER SOURCE.
- DRAWINGS ARE DIAGRAMMATIC. PRECISE PLACEMENT OF EQUIPMENT MAY NOT BE POSSIBLE AS INDICATED. FIELD CHANGES WHICH DO NOT ALTER DESIGN INTENT MAY BE PERFORMED IN THE FIELD BY THE INSTALLER.
- QUANTITIES WHICH CAN BE DETERMINED GRAPHICALLY FROM THE DRAWINGS PREVAIL OVER SCHEDULED QUANTITIES IN THE EVENT OF A CONFLICT.
- ALL MAINLINE PIPE IS TO BE MARKED WITH TRACER WIRE.
- MAINLINE PIPE TO BE ROUTED AS INDICATED ON DRAWINGS AND INSTALLED TO A UNIFORM 24" DEPTH. MAINLINE TO BE INSTALLED PARALLEL TO SIDEWALKS AND CURBS WHERE INDICATED AND 9" BE NO FARTHER THAN 1" FROM BACK OF ADJACENT PAVEMENTS.
- ADJUST ALL EMITTERS FOR PROPER OPERATION. NO OVERSPRAY IS PERMITTED ONTO STRUCTURES OR VEHICULAR PARKING LOTS. MINOR OVERSPRAY ONTO SIDEWALKS IS ALLOWED WHERE INDICATED BY DESIGN.



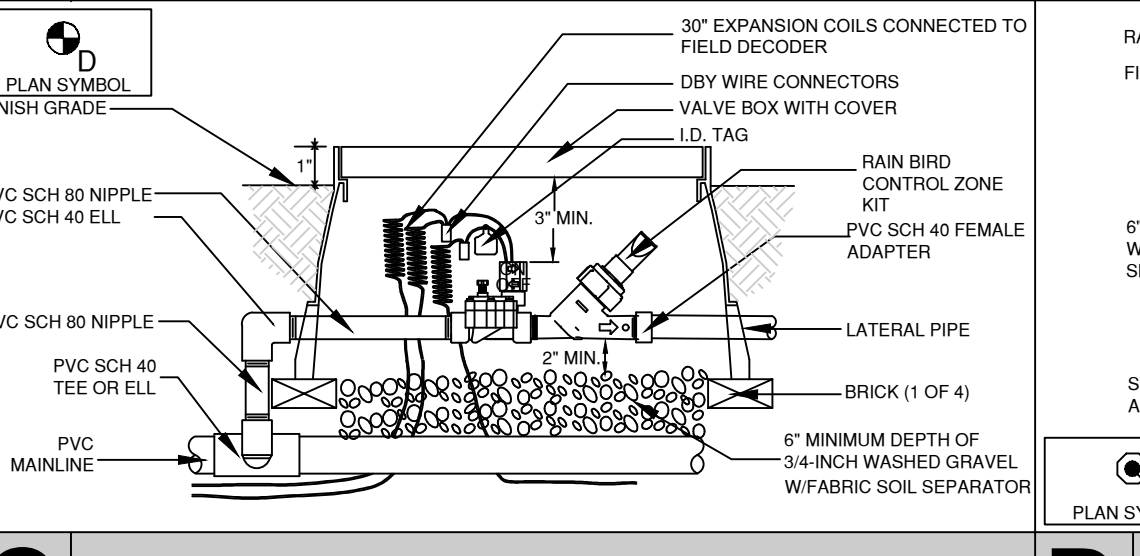
**A REMOTE CONTROL VALVE NOT TO SCALE**



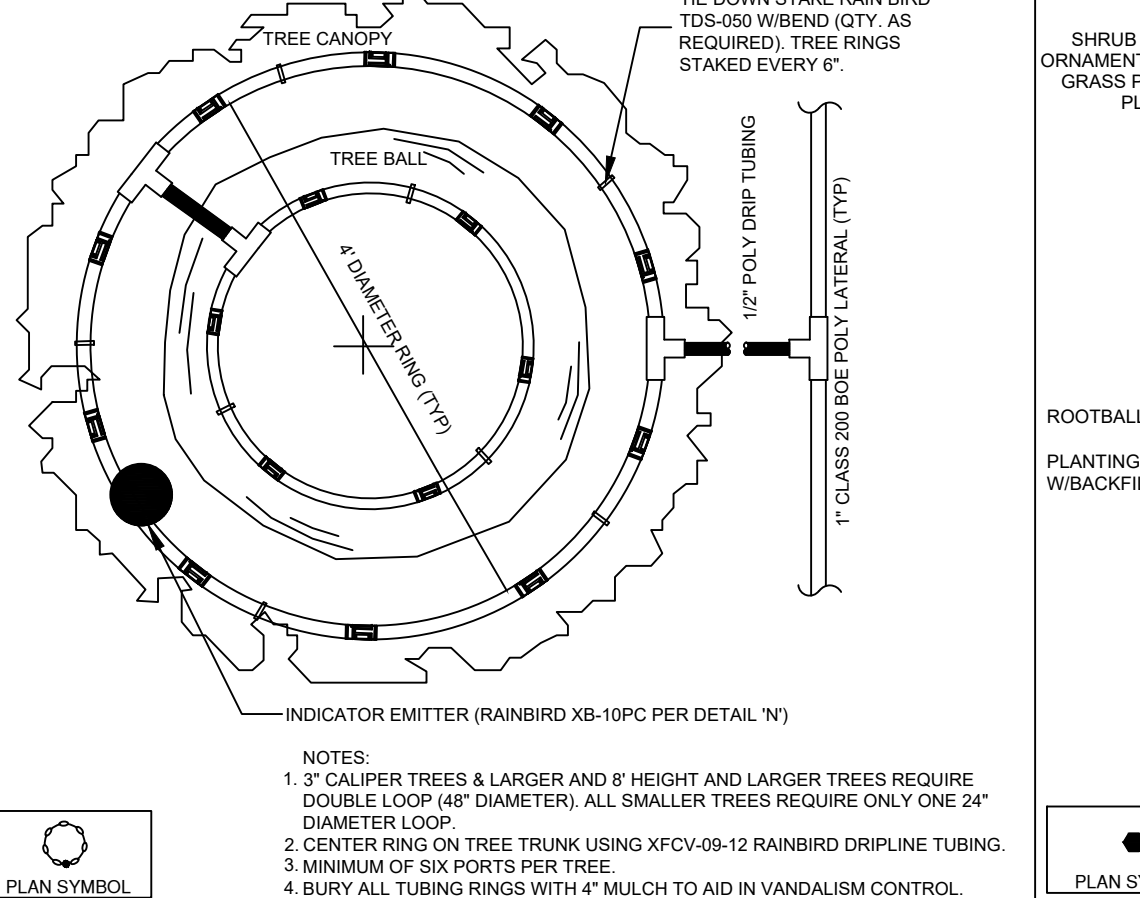
**G REMOTE CONTROL DRIP ZONE VALVE NOT TO SCALE**



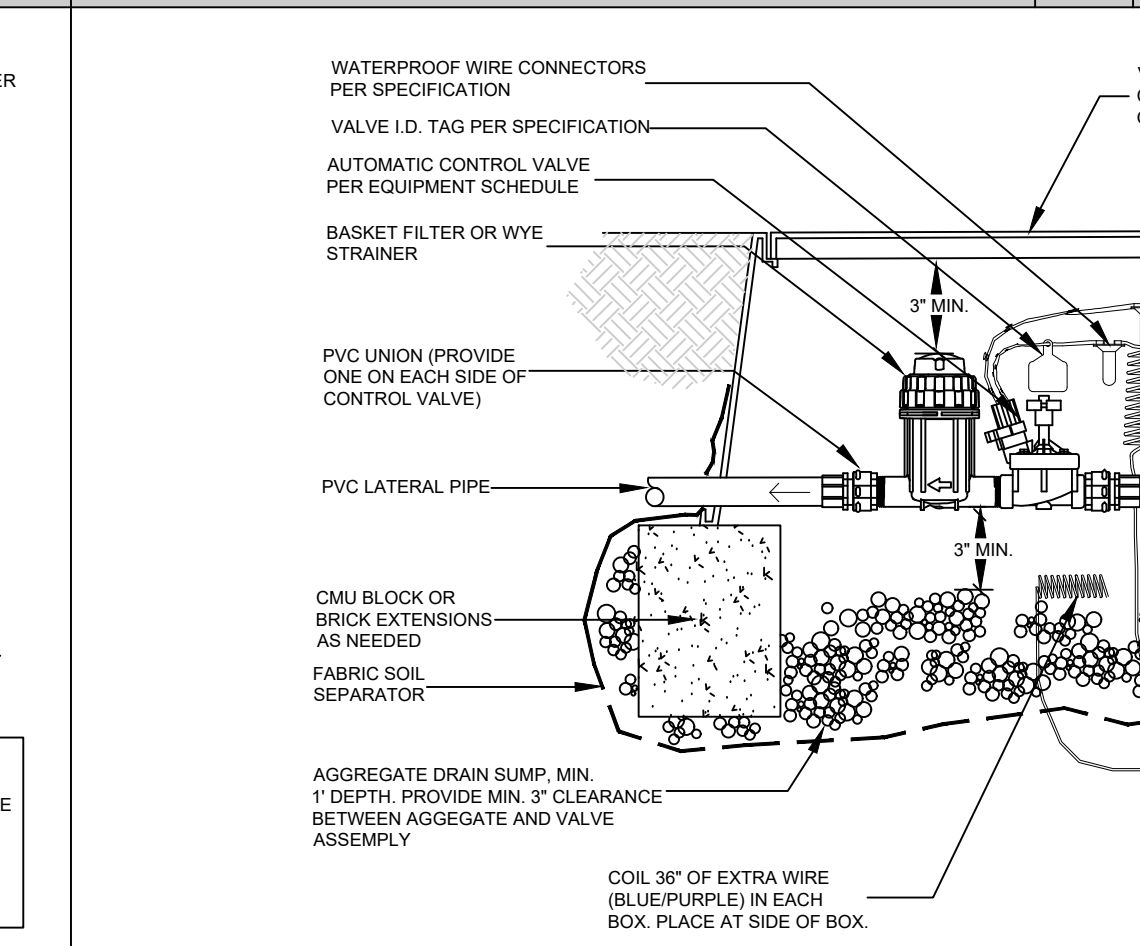
**B AUTOMATIC CONTROLLER NOT TO SCALE**



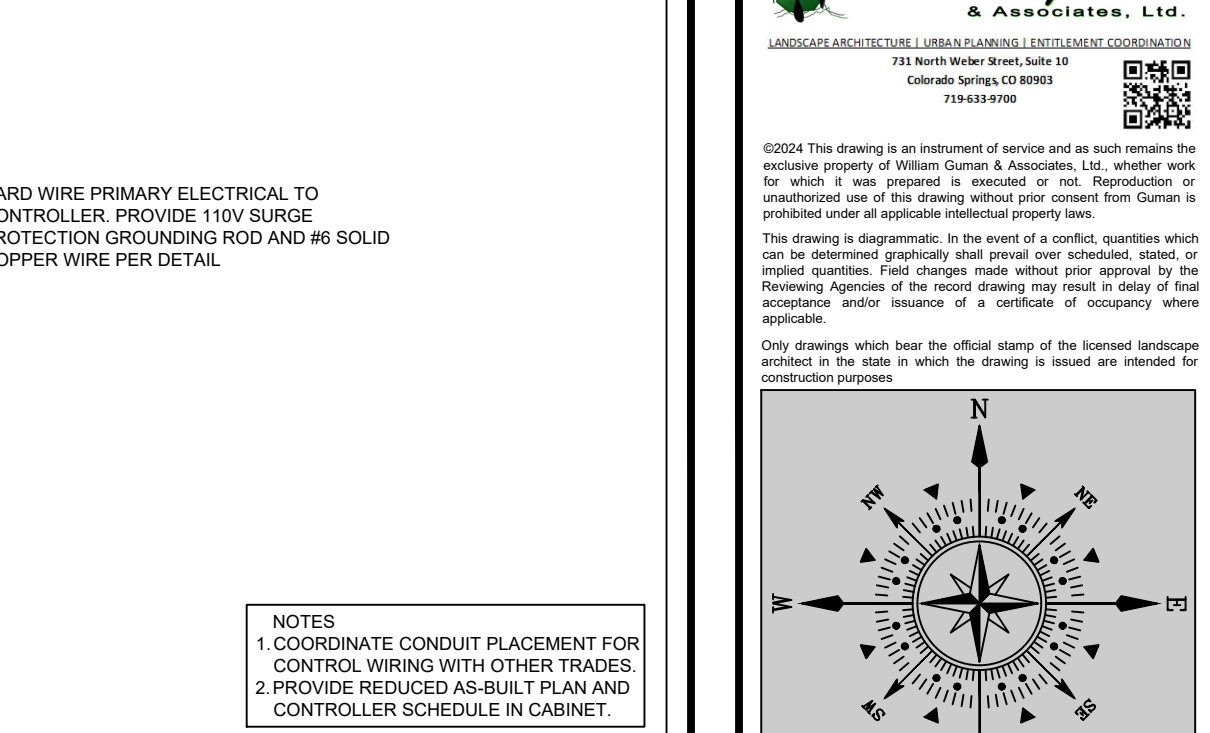
**C DRIP CONTROL ZONE KIT NOT TO SCALE**



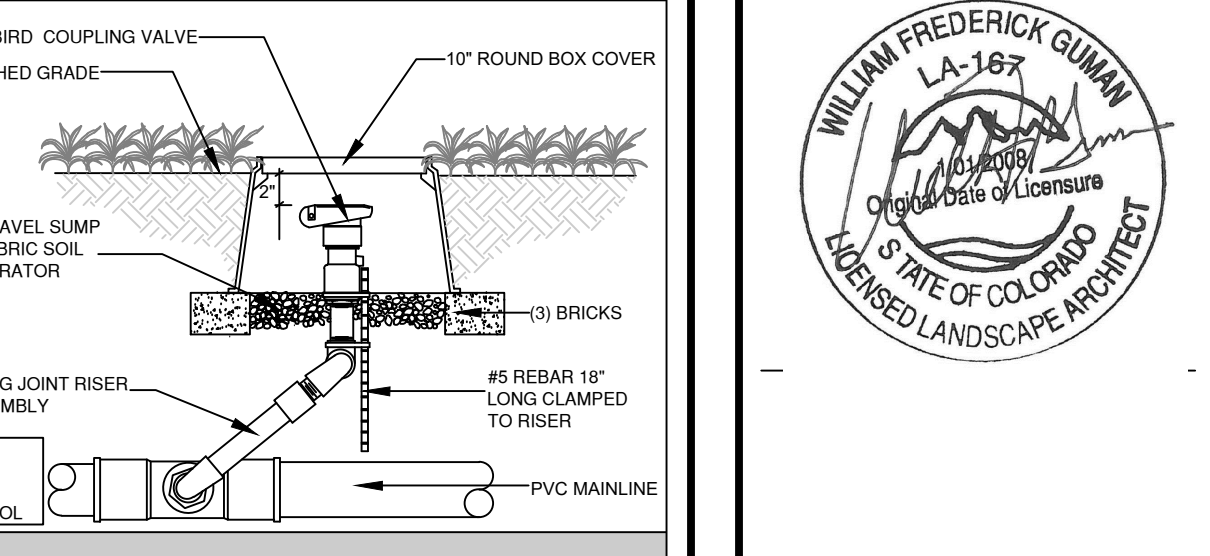
**E DRIP TREE RING W/ INDICATOR EMITTER NOT TO SCALE**



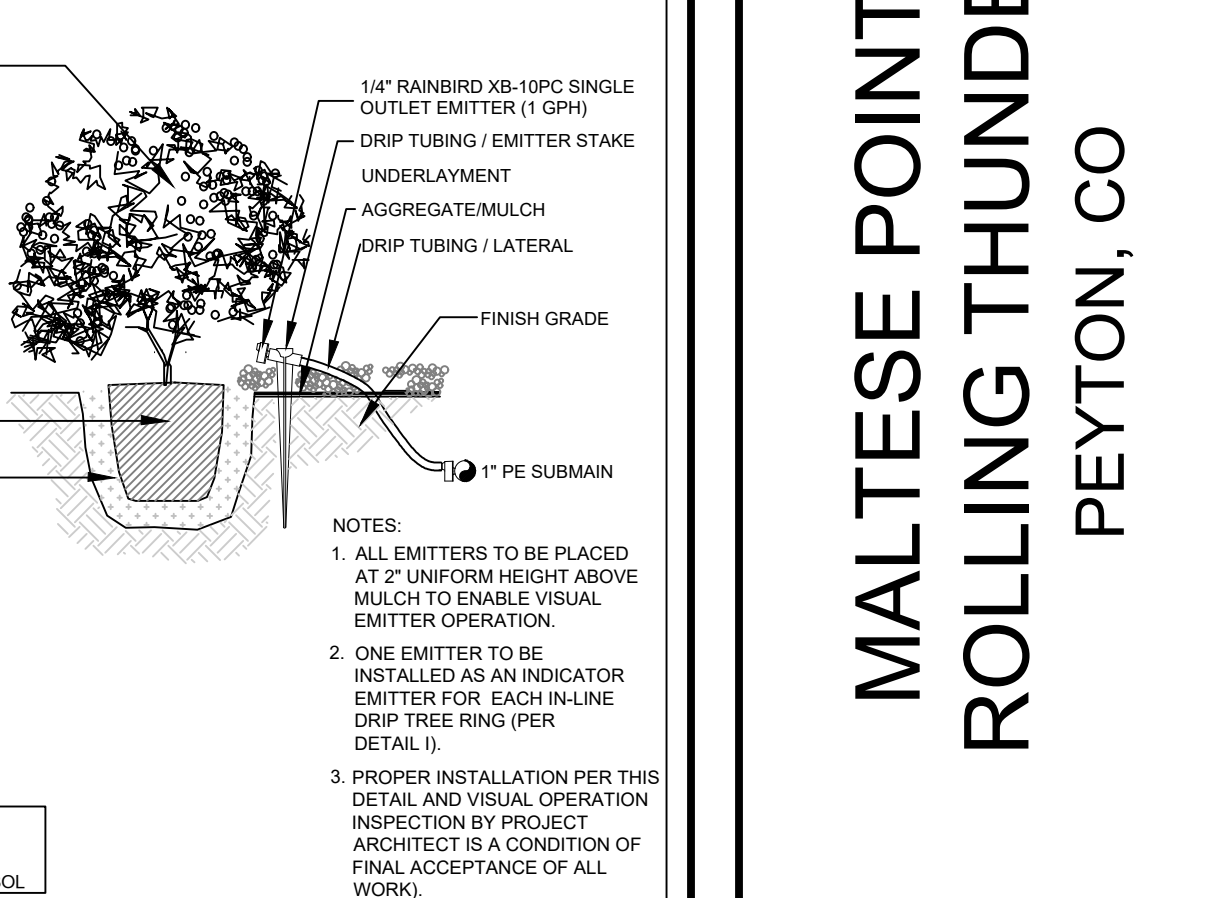
**F DRIP EMITTERS NOT TO SCALE**



**D STAKED QCV VALVE NOT TO SCALE**

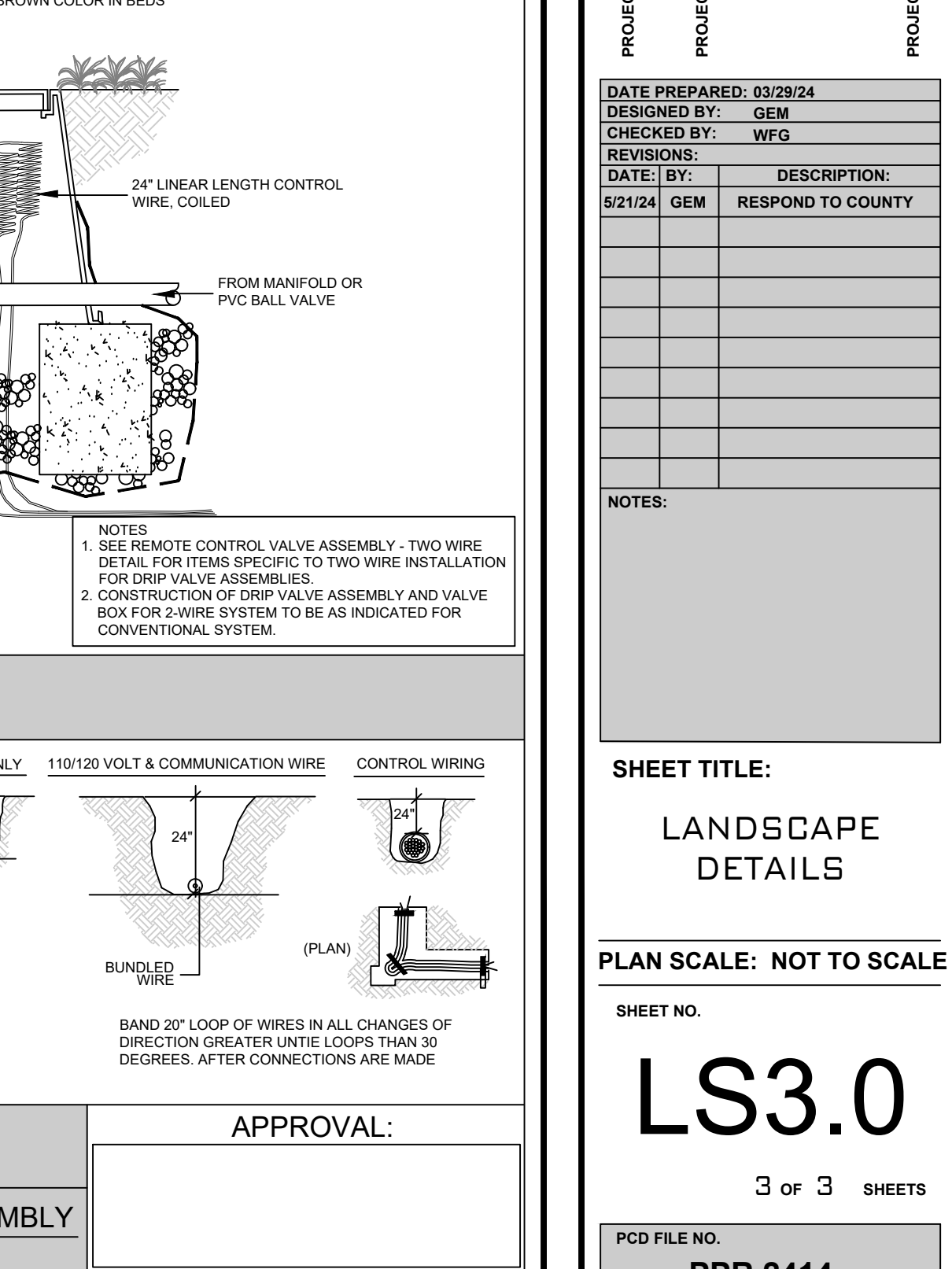


**TYPICAL PLACEMENT OF SHRUB EMITTER**



**H TRENCHES NOT TO SCALE**

**I MASTER VALVE ASSEMBLY NOT TO SCALE**



**APPROVAL:**

