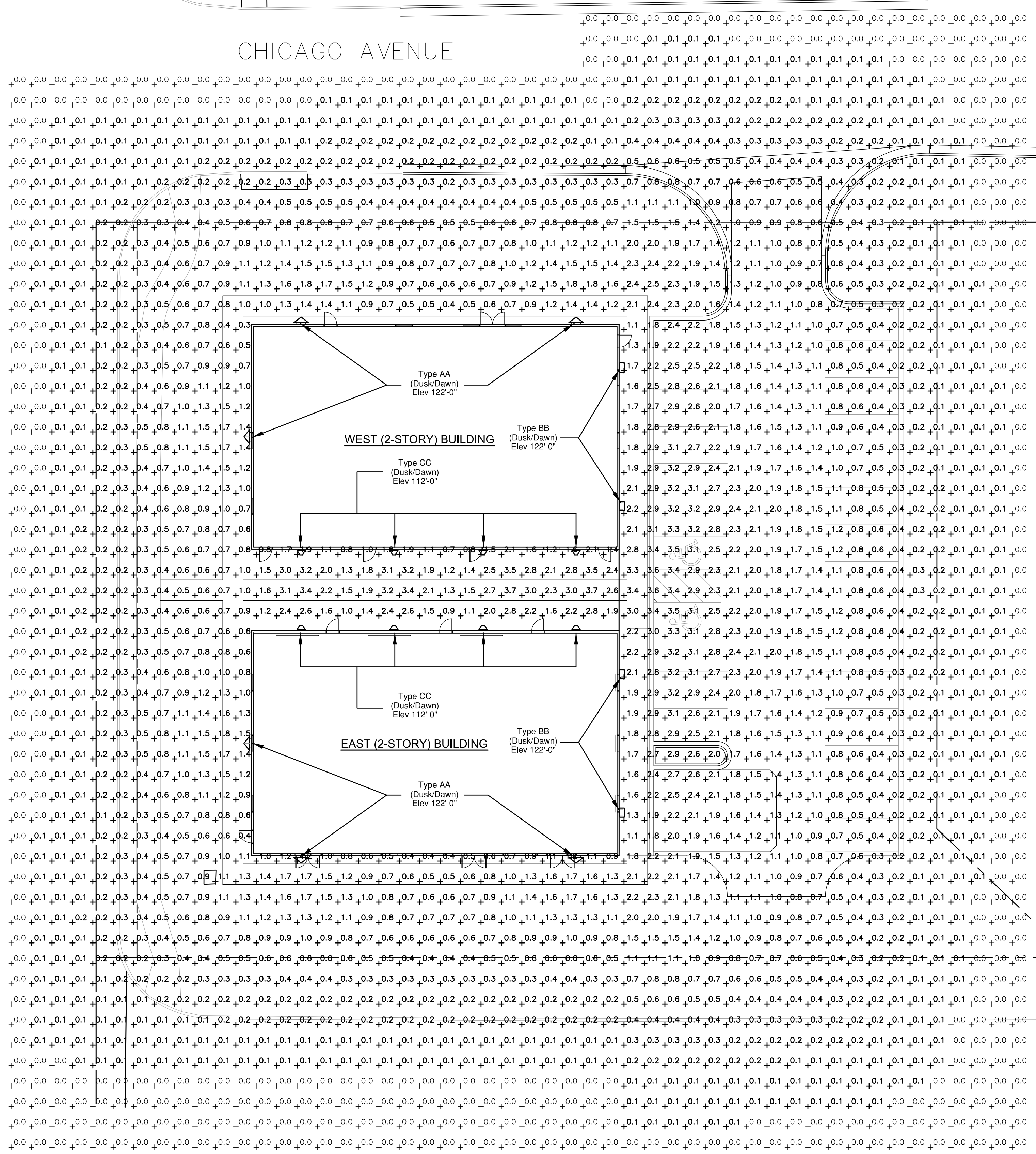
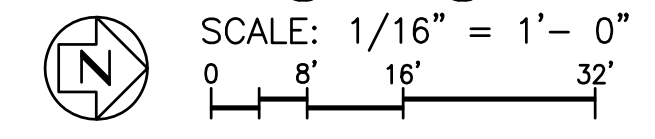


OLD MERIDIAN ROAD

CHICAGO AVENUE



Exterior Site Lighting Calculation Plan



| Statistics | | | | | | |
|---------------|--------|--------|--------|--------|---------|---------|
| Description | Symbol | Avg | Max | Min | Max/Min | Avg/Min |
| Calc. Zone #1 | + | 0.4 fc | 3.7 fc | 0.0 fc | N/A | N/A |

- GENERAL NOTES:**
- REFER TO SHEET ELC.2 FOR FIXTURE SPECIFICATION SHEETS.
 - ALL LIGHTING WILL BE CONTROLLED BY PHOTOCELL FOR (DUSK/DAWN) OPERATION FOR SECURITY PURPOSES.
 - LIGHTING CALCULATIONS WERE COMPLETED UTILIZING VISUAL LIGHTING PROGRAM WITH ASSOCIATED, FIXTURE MANUFACTURER'S, PUBLISHED IES FILES.
 - ALL CALCULATIONS WERE DONE BY THE ENGINEER OF RECORD.

**JOHN DAVIS
DESIGN GROUP**

ARCHITECTS
INTERIORS
PLANNERS

176 TALAMINE COURT
SUITE 100
COLORADO SPRINGS,
COLORADO 80907
P 719/528-1177
F 719/444-8409

K

**KOHNERT ELECTRICAL
ENGINEER'S, INC.**

911 S. 8th Street, Ste 200
Colorado Springs, Co 80905
Phone (719) 633-2637

**DO NOT SCALE
DRAWINGS FOR
CONSTRUCTION
PURPOSES**

THESE DRAWINGS ARE THE PROPERTY OF JOHN DAVIS ARCHITECTS. THEY SHALL BE USED FOR THE SOLE PURPOSE OF CONSTRUCTING THIS PROJECT. THEY SHALL NOT BE REPRODUCED AND USED FOR THE PURPOSE OF CONSTRUCTION DOCUMENTS FOR ANY OTHER PROJECTS.

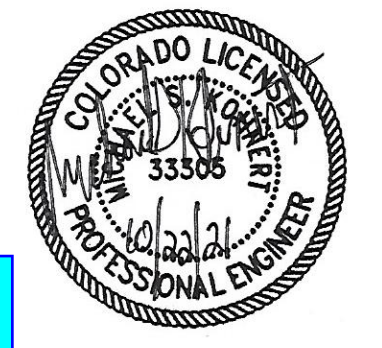
Exterior Site Lighting Calculation Plan

**NEW METAL BUILDINGS FOR:
KENSHIN MARTIAL ARTS
COMPLEX**

CHICAGO AVENUE AND OLD MERIDIAN ROAD
FALCON, COLORADO 80813

- INDEX TO EXTERIOR LIGHTING CALCULATION DRAWINGS**
- ELC.1 EXTERIOR SITE LIGHTING POINT BY POINT CALCULATION AND STATISTICS
 - ELC.2 LIGHTING FIXTURE SPECIFICATION SHEETS

| | |
|-------------|-----------------|
| PROJECT NO. | 202130 |
| DATE | 22 October 2021 |
| DRAWN BY | msh |
| CHECKED | lmak |
| APPROVED | msh |
| REVISED | |



SHEET

ELC.1

Please add PCD File No. PPR-21-067

