



**JOHN DAVIS  
DESIGN GROUP**

**ARCHITECTS  
INTERIORS  
PLANNERS**

176 TALAMINE COURT  
SUITE 100  
COLORADO SPRINGS,  
COLORADO 80907  
P 719/528-1177  
F 719/444-8409

**DO NOT SCALE  
DRAWINGS FOR  
CONSTRUCTION  
PURPOSES**

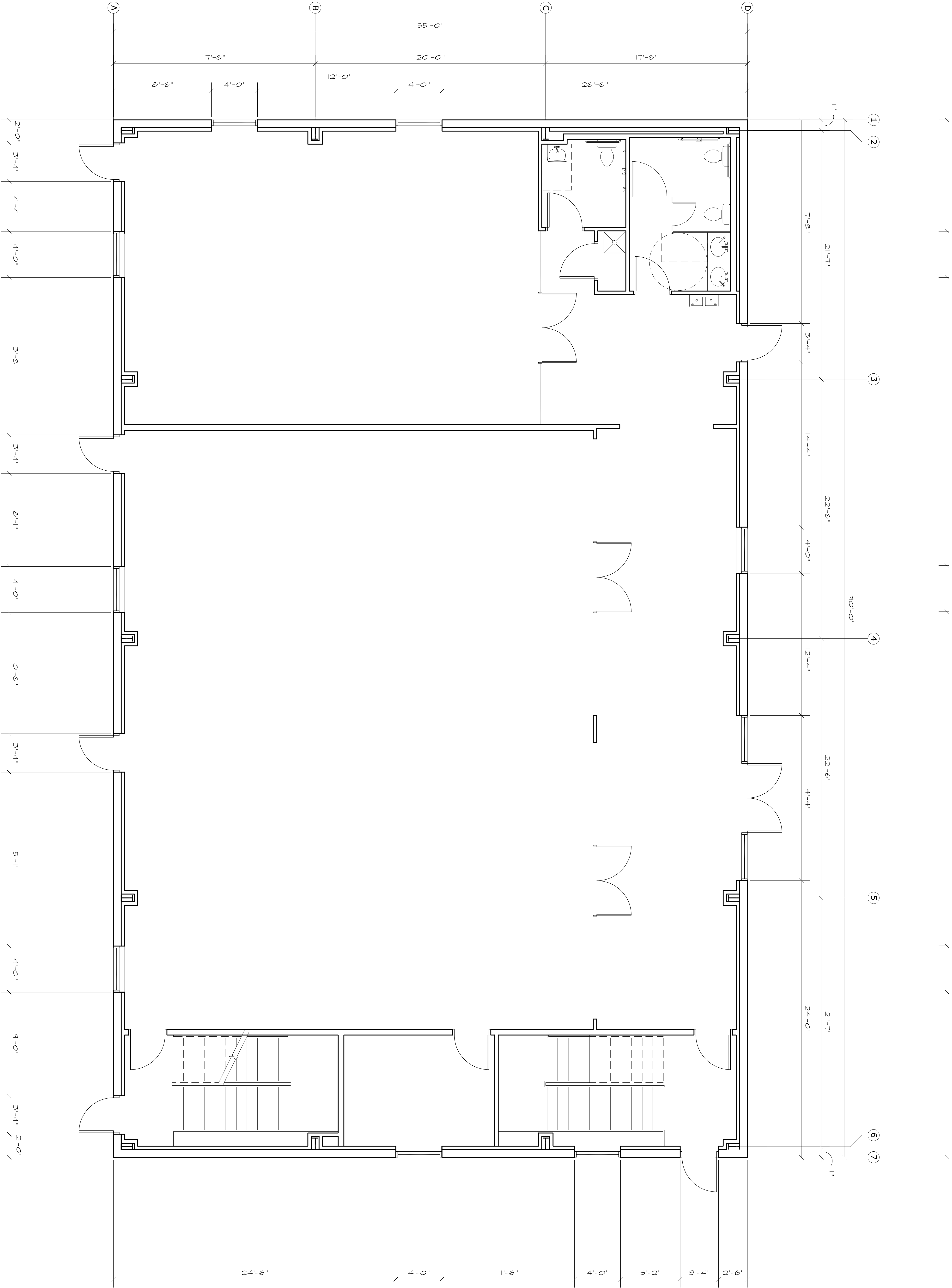
THESE DRAWINGS ARE THE PROPERTY OF JOHN DAVIS DESIGN GROUP AND ARE TO BE USED FOR THE SOLE PURPOSES OF CONSTRUCTION. ANY REPRODUCTION OR USE FOR OTHER PROJECTS WITHOUT THE WRITTEN PERMISSION OF JOHN DAVIS DESIGN GROUP IS PROHIBITED AND WILL BE PROSECUTED TO THE FULL EXTENT OF THE LAW.

**MAIN LEVEL DIMENSIONED PLAN - BUILDING "A"**  
**NEW METAL BUILDINGS FOR:  
KENSHIN MARTIAL ARTS  
COMPLEX**  
**0 MERIDIAN ROAD  
FALCON, COLORADO 80831**

PROJECT NO. 202190  
DATE OCTOBER 4, 2021  
DRAWN BY JRD  
CHECKED JRD  
APPROVED JRD  
REVISED

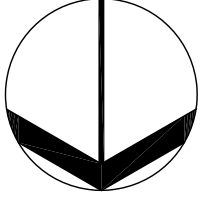
SHEET

**A1.2**



Indicate type of use space on floor plans (office/studio/etc.)

**NORTH**



**MAIN LEVEL DIMENSIONED FLOOR PLAN**

SCALE: 1/4"=1'-0"

A1.2



**JOHN DAVIS  
DESIGN GROUP**

ARCHITECTS  
INTERIORS  
PLANNERS

176 TALAMINE COURT  
SUITE 100  
COLORADO SPRINGS,  
COLORADO 80907  
P 719/528-1177  
F 719/444-8409

DO NOT SCALE  
DRAWINGS FOR  
CONSTRUCTION  
PURPOSES

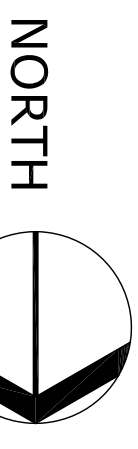
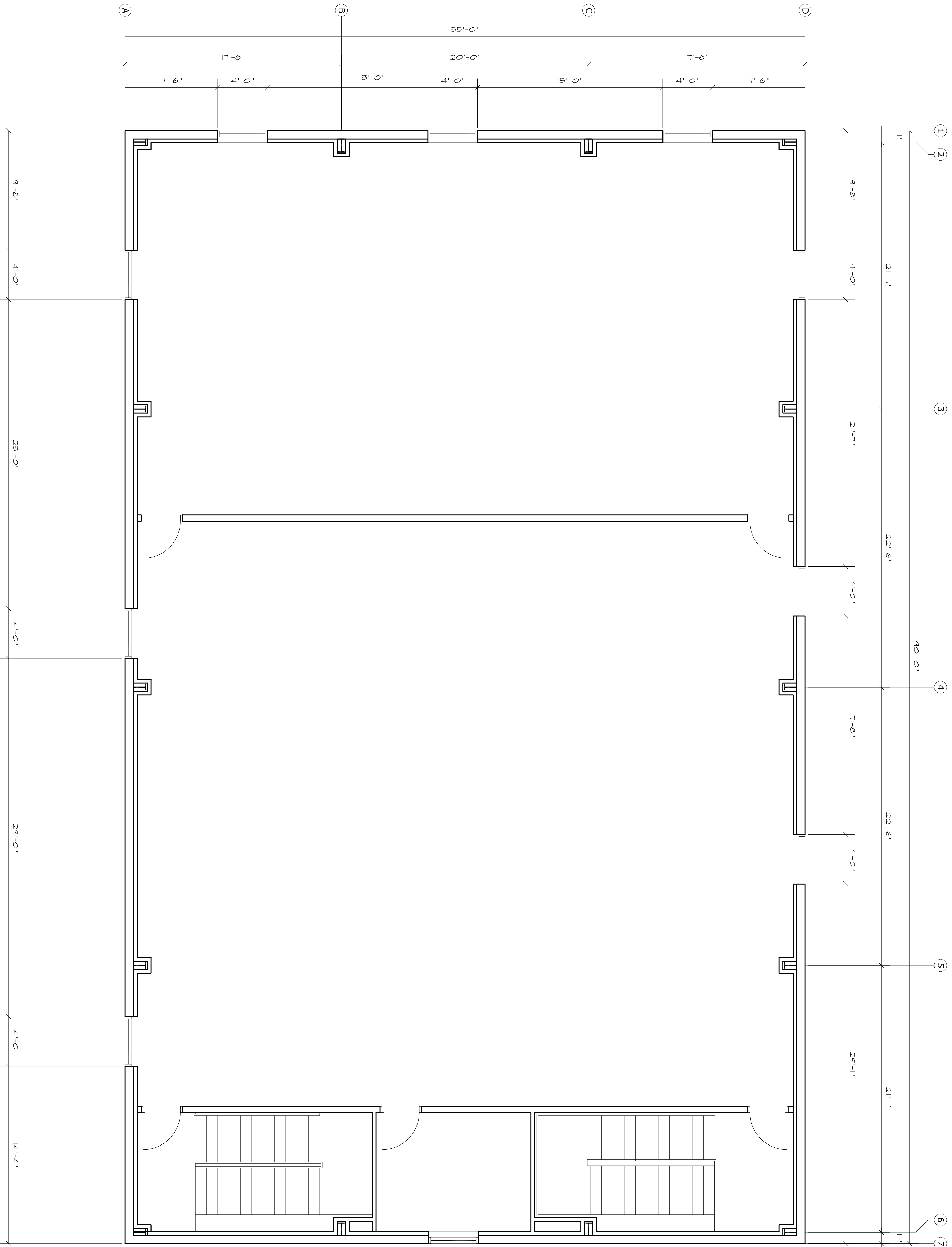
THESE DRAWINGS ARE THE PROPERTY OF  
JOHN DAVIS DESIGN GROUP AND ARE  
FOR THE SOLE PURPOSE OF CONSTRUCTION  
REPRODUCTION AND USE FOR THE PROJECT  
IDENTIFIED HEREIN. ANY REPRODUCTION  
OR USE FOR OTHER PROJECTS OR  
OTHER PURPOSES IS STRICTLY PROHIBITED.

UPPER LEVEL DIMENSIONED PLAN - BUILDING "A"  
**NEW METAL BUILDINGS FOR:  
KENSIN MARTIAL ARTS  
COMPLEX**  
0 MERIDIAN ROAD  
FALCON, COLORADO 80831

PROJECT NO. 202130  
DATE OCTOBER 9, 2021  
DRAWN BY JRD  
CHECKED JRD  
APPROVED JRD  
REVISED

SHEET

**A1.4**



**MAIN LEVEL DIMENSIONED FLOOR PLAN**

A1.4

SCALE: 1/4"=1'-0"



JOHN DAVIS  
DESIGN GROUP

ARCHITECTS  
INTERIORS  
PLANNERS

176 TALAMINE COURT  
SUITE 100  
COLORADO SPRINGS,  
COLORADO 80907  
P 719/528-1177  
F 719/444-8409

DO NOT SCALE  
DRAWINGS FOR  
CONSTRUCTION  
PURPOSES

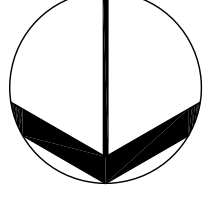
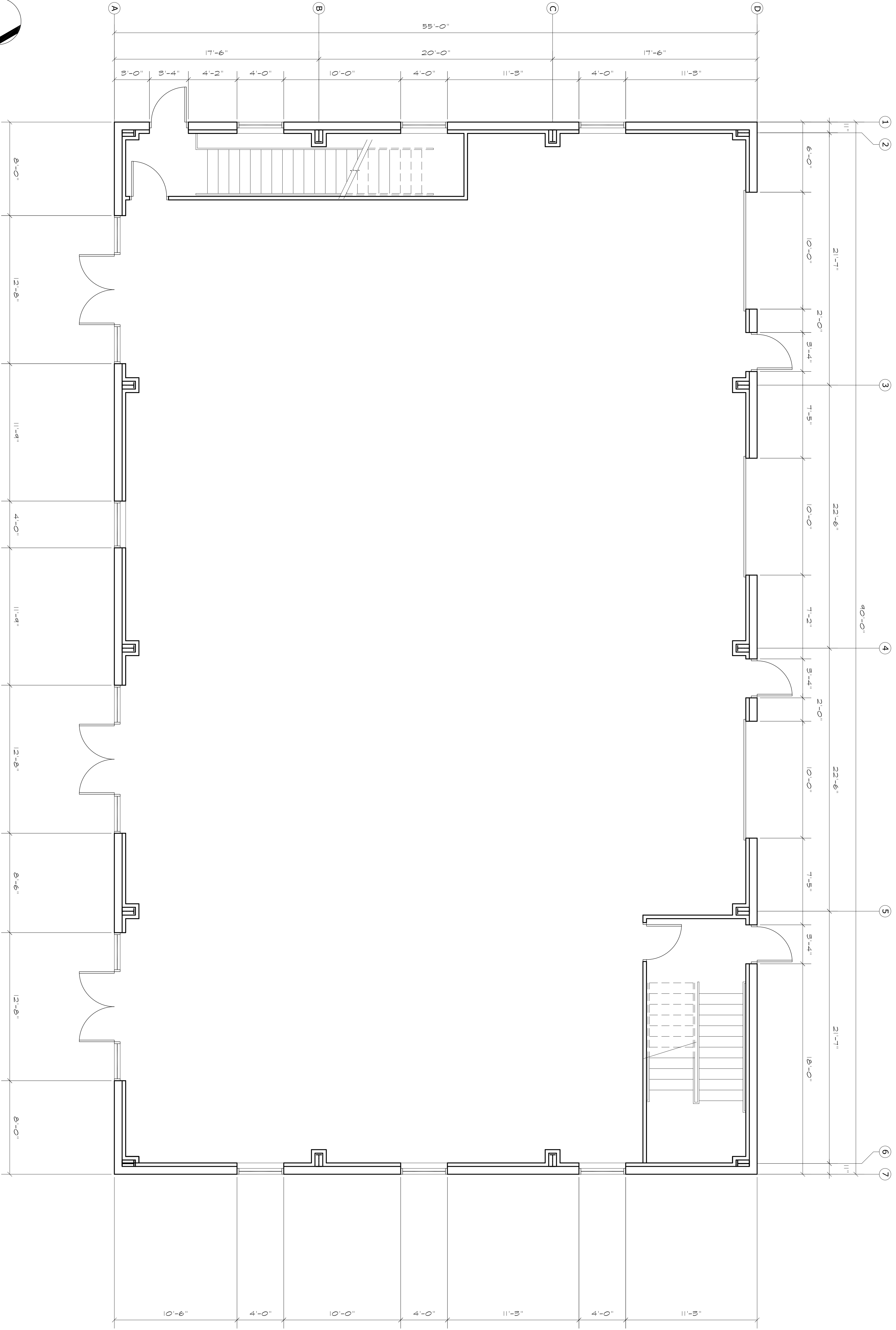
THESE DRAWINGS ARE THE PROPERTY OF  
JOHN DAVIS DESIGN GROUP AND ARE TO BE  
USED FOR THE PROJECT AND SITE  
INDICATED ONLY. ANY REPRODUCTION  
OR USE FOR OTHER PROJECTS OR  
OTHER PURPOSES IS STRICTLY  
PROHIBITED AND WILL BE  
CONSIDERED A VIOLATION OF THE  
DRAWING'S TERMS AND  
CONDITIONS.

MAIN LEVEL DIMENSIONED PLAN - BUILDING "B"  
**NEW METAL BUILDINGS FOR:  
KENSIN MARTIAL ARTS  
COMPLEX**  
0 MERIDIAN ROAD  
FALCON, COLORADO 80831

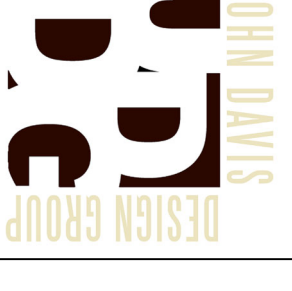
PROJECT NO. 202130  
DATE OCTOBER 9, 2021  
DRAWN BY JRD  
CHECKED JRD  
APPROVED JRD  
REVISED

SHEET

A1.2



1/4  
A1.2  
MAIN LEVEL DIMENSIONED FLOOR PLAN  
SCALE: 1/4"=1'-0"



JOHN DAVIS  
DESIGN GROUP

ARCHITECTS  
INTERIORS  
PLANNERS

176 TALAMINE COURT  
SUITE 100  
COLORADO SPRINGS,  
COLORADO 80907  
P 719/528-1177  
F 719/444-8409

DO NOT SCALE  
DRAWINGS FOR  
CONSTRUCTION  
PURPOSES

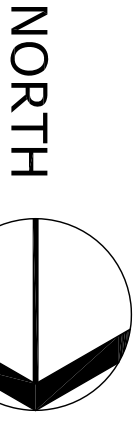
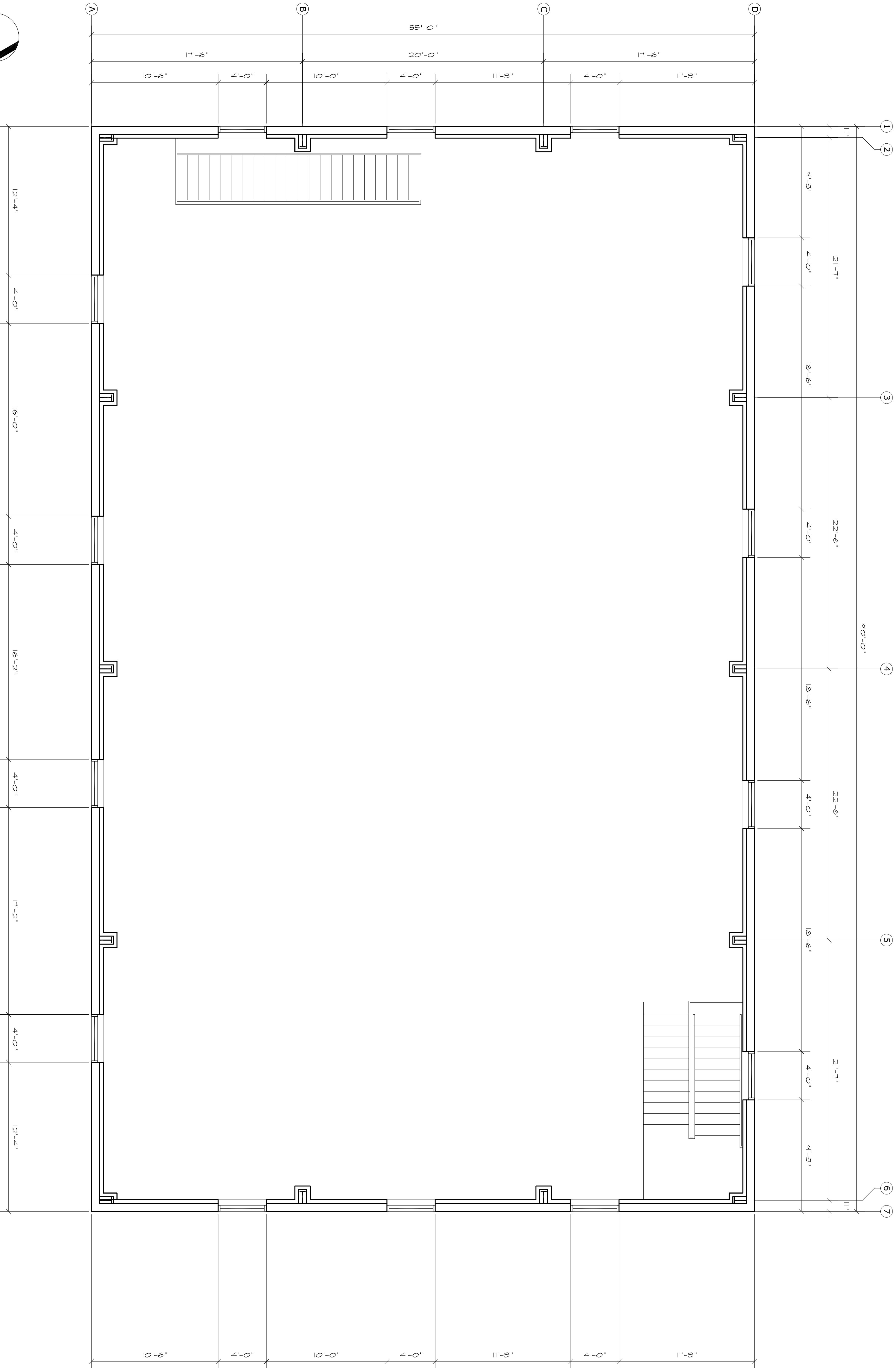
THESE DRAWINGS ARE THE PROPERTY OF  
JOHN DAVIS DESIGN GROUP AND ARE NOT TO BE  
REPRODUCED OR USED FOR THE PURPOSE  
OF OTHER PROJECTS WITHOUT THE WRITTEN  
CONSENT OF JOHN DAVIS DESIGN GROUP.

UPPER LEVEL DIMENSIONED PLAN - BUILDING "B"  
**NEW METAL BUILDINGS FOR:  
KENSIN MARTIAL ARTS  
COMPLEX**  
0 MERIDIAN ROAD  
FALCON, COLORADO 80831

PROJECT NO. 202130  
DATE OCTOBER 9, 2021  
DRAWN BY JRD  
CHECKED JRD  
APPROVED JRD  
REVISED

SHEET

A1.4



MAIN LEVEL DIMENSIONED FLOOR PLAN

A1.4

SCALE: 1/4"=1'-0"