



JOHN DAVIS
DESIGN GROUP

ARCHITECTS
INTERIORS
PLANNERS

176 TALAMINE COURT
SUITE 100
COLORADO SPRINGS,
COLORADO 80907
P 719/528-1177
F 719/444-8409

DO NOT SCALE
DRAWINGS FOR
CONSTRUCTION
PURPOSES

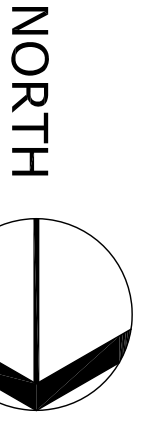
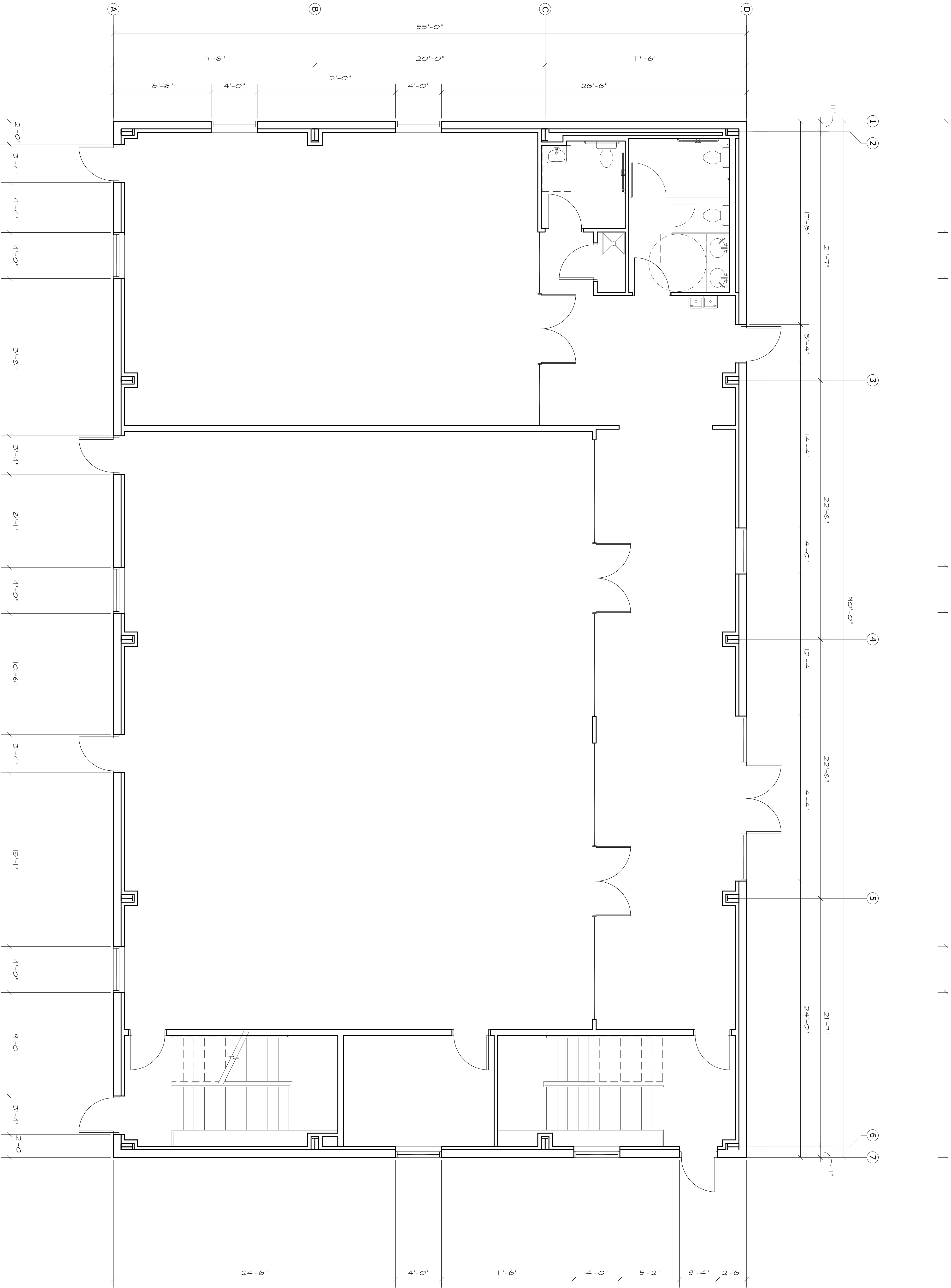
THESE DRAWINGS ARE THE PROPERTY OF
JOHN DAVIS DESIGN GROUP AND ARE NOT TO BE
REPRODUCED OR TRANSMITTED IN ANY FORM OR
BY ANY MEANS, ELECTRONIC OR MECHANICAL,
INCLUDING PHOTOCOPYING, RECORDING, OR BY
ANY INFORMATION STORAGE AND RETRIEVAL
SYSTEM, WITHOUT PERMISSION IN WRITING FROM
JOHN DAVIS DESIGN GROUP.

MAIN LEVEL DIMENSIONED PLAN - BUILDING "A"
**NEW METAL BUILDINGS FOR:
KENSIN MARTIAL ARTS
COMPLEX**
0 MERIDIAN ROAD
FALCON, COLORADO 80831

PROJECT NO. 202190
DATE OCTOBER 4, 2021
DRAWN BY JRD
CHECKED JRD
APPROVED JRD
REVISED

SHEET

A1.2



MAIN LEVEL DIMENSIONED FLOOR PLAN

A1.2

SCALE: 1/4"=1'-0"



JOHN DAVIS
DESIGN GROUP

ARCHITECTS
INTERIORS
PLANNERS

176 TALAMINE COURT
SUITE 100
COLORADO SPRINGS,
COLORADO 80907
P 719/528-1177
F 719/444-8409

DO NOT SCALE
DRAWINGS FOR
CONSTRUCTION
PURPOSES

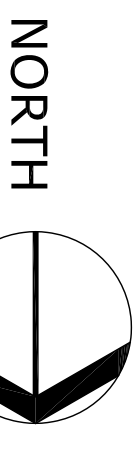
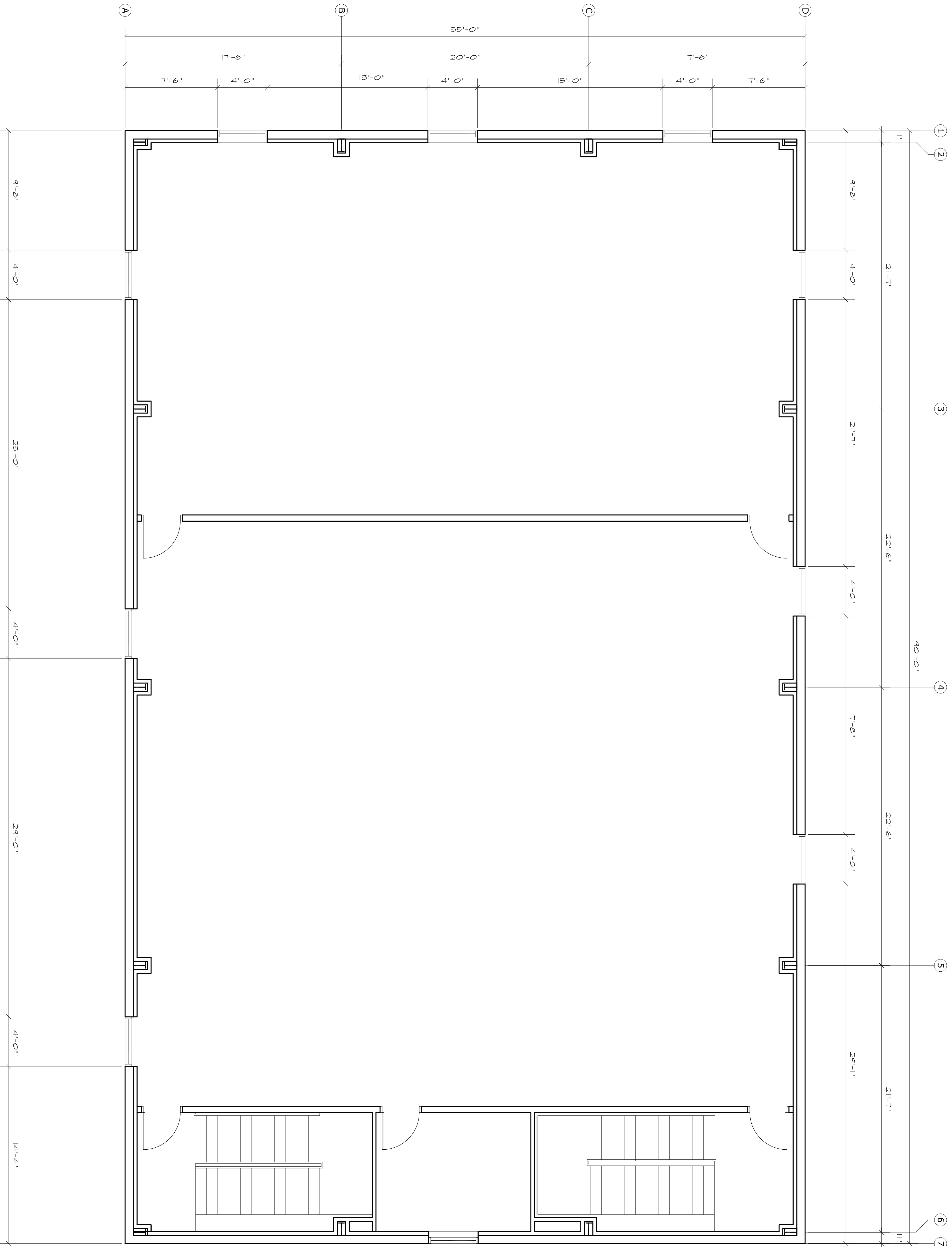
THESE DRAWINGS ARE THE PROPERTY OF
JOHN DAVIS DESIGN GROUP AND ARE
FOR THE SOLE PURPOSE OF CONSTRUCTION
REPRODUCTION AND USE FOR THE PROJECT
IDENTIFIED HEREIN. NO PART OF THESE
DRAWINGS OR DOCUMENTS FOR ANY
OTHER PROJECTS.

UPPER LEVEL DIMENSIONED PLAN - BUILDING "A"
**NEW METAL BUILDINGS FOR:
KENSIN MARTIAL ARTS
COMPLEX**
0 MERIDIAN ROAD
FALCON, COLORADO 80831

PROJECT NO. 202130
DATE OCTOBER 9, 2021
DRAWN BY JRD
CHECKED JRD
APPROVED JRD
REVISED

SHEET

A1.4



A1.4 MAIN LEVEL DIMENSIONED FLOOR PLAN
SCALE: 1/4"=1'-0"



**JOHN DAVIS
DESIGN GROUP**

**ARCHITECTS
INTERIORS
PLANNERS**

176 TALAMINE COURT
SUITE 100
COLORADO SPRINGS,
COLORADO 80907
P 719/528-1177
F 719/444-8409

DO NOT SCALE
DRAWINGS FOR
CONSTRUCTION
PURPOSES

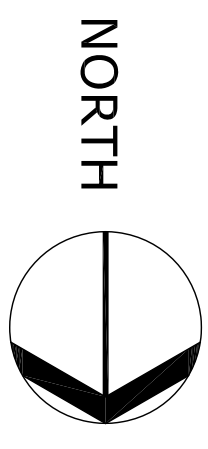
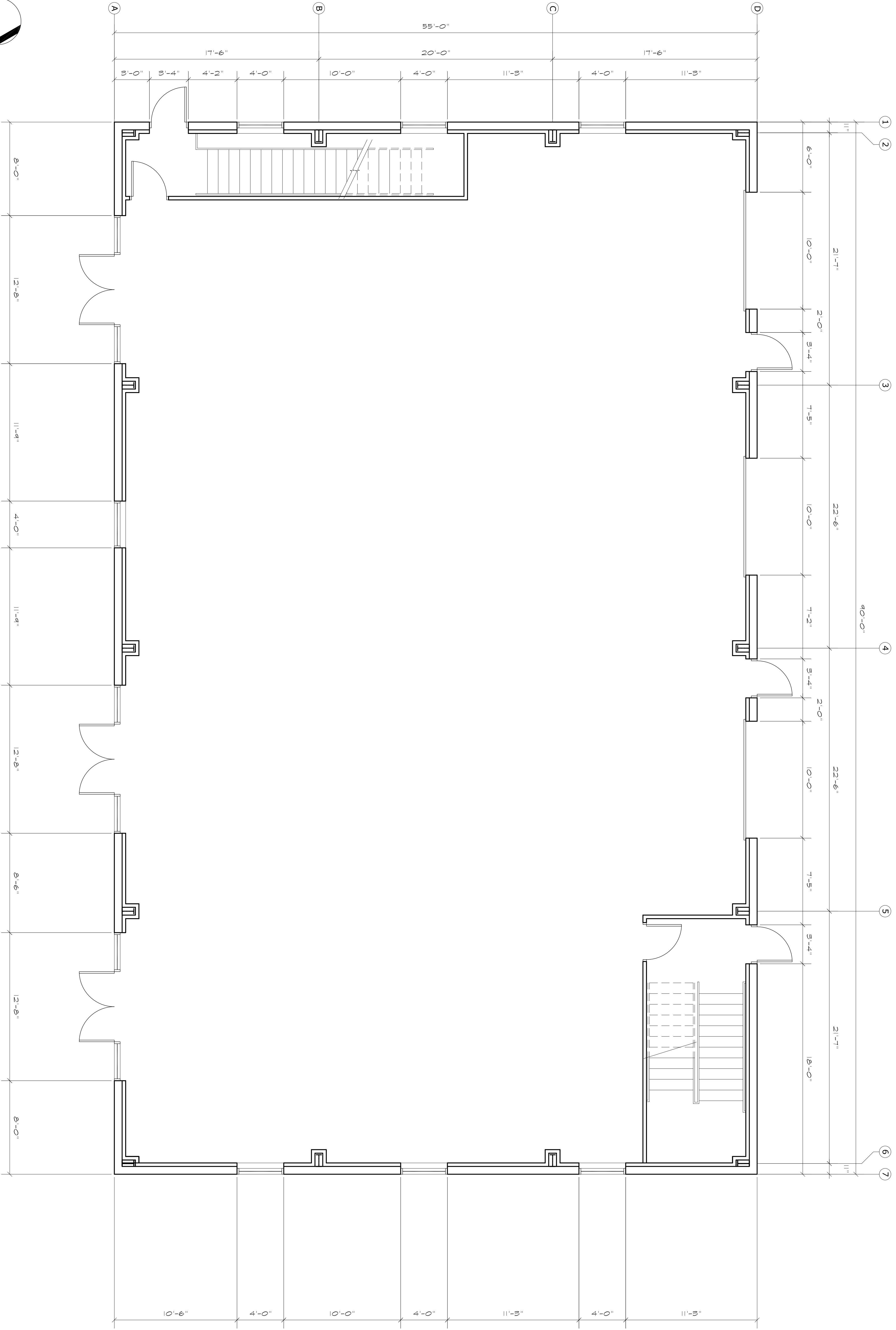
THESE DRAWINGS ARE THE PROPERTY OF
JOHN DAVIS DESIGN GROUP AND ARE TO BE
USED FOR THE PROJECT AND NOT FOR ANY
OTHER PROJECTS.

MAIN LEVEL DIMENSIONED PLAN - BUILDING "B"
**NEW METAL BUILDINGS FOR:
KENSIN MARTIAL ARTS
COMPLEX**
0 MERIDIAN ROAD
FALCON, COLORADO 80831

PROJECT NO. 202130
DATE OCTOBER 9, 2021
DRAWN BY JRD
CHECKED JRD
APPROVED JRD
REVISED

SHEET

A1.2



1/4
A1.2
MAIN LEVEL DIMENSIONED FLOOR PLAN
SCALE: 1/4"=1'-0"



JOHN DAVIS
DESIGN GROUP

ARCHITECTS
INTERIORS
PLANNERS

176 TALAMINE COURT
SUITE 100
COLORADO SPRINGS,
COLORADO 80907
P 719/528-1177
F 719/444-8409

DO NOT SCALE
DRAWINGS FOR
CONSTRUCTION
PURPOSES

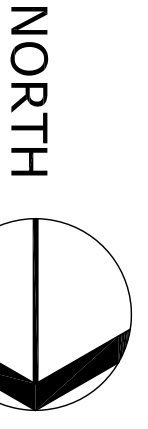
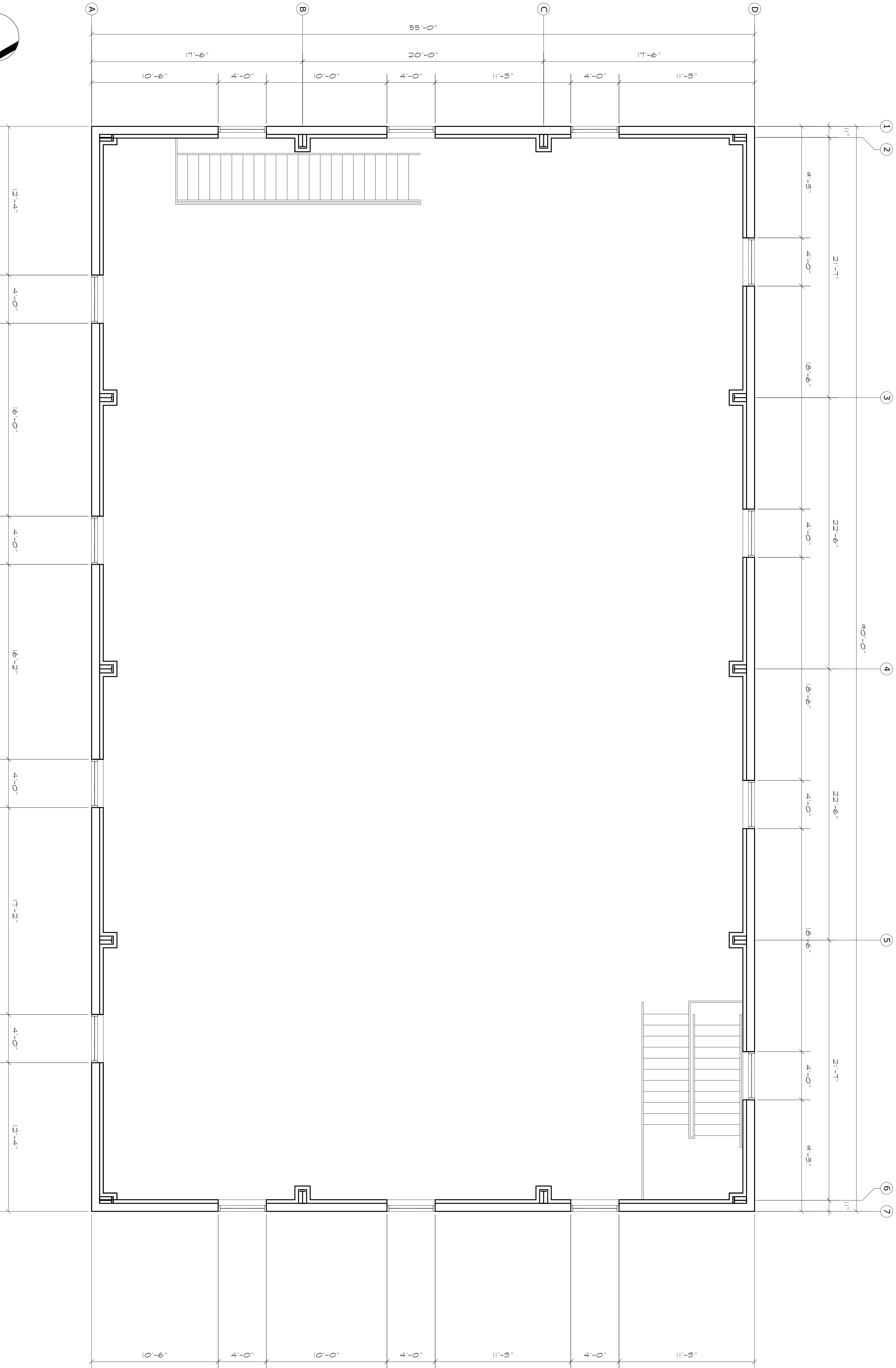
THESE DRAWINGS ARE THE PROPERTY OF
JOHN DAVIS DESIGN GROUP AND ARE TO BE
USED FOR THE PURPOSES SPECIFIED
HEREIN. ANY REPRODUCTION OR
REPRODUCTION AND USE FOR THE PURPOSE
OTHER THAN THAT SPECIFIED HEREIN
IS PROHIBITED.

UPPER LEVEL DIMENSIONED PLAN - BUILDING "D"
**NEW METAL BUILDINGS FOR:
KENSIN MARTIAL ARTS
COMPLEX**
0 MERIDIAN ROAD
FALCON, COLORADO 80831

PROJECT NO. 202130
DATE OCTOBER 9, 2021
DRAWN BY JRD
CHECKED JRD
APPROVED JRD
REVISED

SHEET

A1.4



MAIN LEVEL DIMENSIONED FLOOR PLAN

A1.4

SCALE: 1/4"=1'-0"