



JOHN DAVIS
DESIGN GROUP

ARCHITECTS
INTERIORS
PLANNERS

176 TALAMINE COURT
SUITE 100
COLORADO SPRINGS,
COLORADO 80907
P 719/528-1177
F 719/444-8409

DO NOT SCALE
DRAWINGS FOR
CONSTRUCTION
PURPOSES

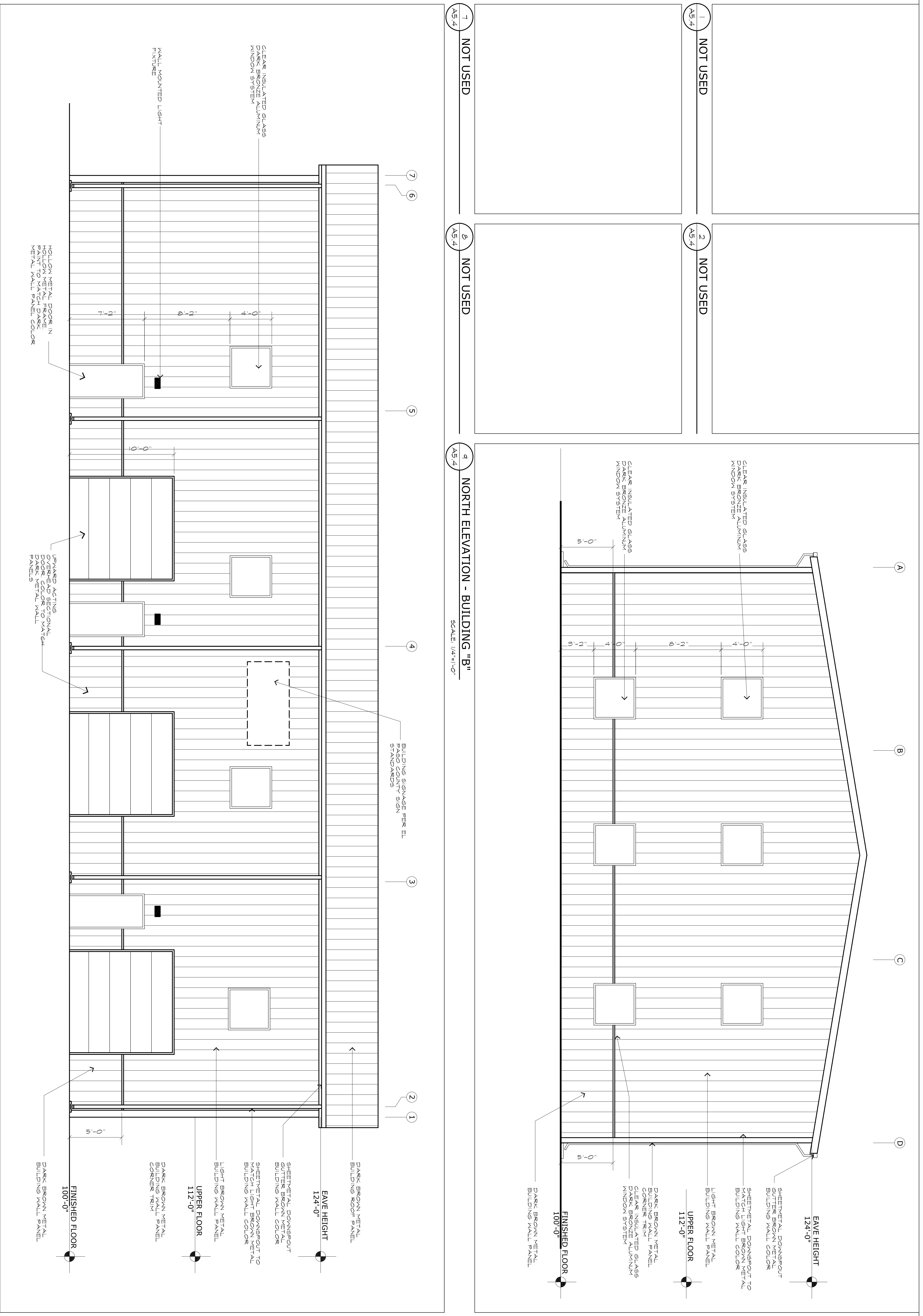
THESE DRAWINGS ARE THE PROPERTY OF
JOHN DAVIS DESIGN GROUP AND ARE TO BE
USED ONLY FOR THE PROJECT AND
PURPOSES SPECIFIED HEREIN. ANY
REPRODUCTION OR USE FOR OTHER
PROJECTS OR PURPOSES WITHOUT THE
WRITTEN CONSENT OF JOHN DAVIS
DESIGN GROUP IS STRICTLY PROHIBITED.

EXTERIOR ELEVATIONS - BUILDING "B"
**NEW METAL BUILDINGS FOR:
KENSHIN MARTIAL ARTS
COMPLEX**
0 MERIDIAN ROAD
FALCON, COLORADO 80831

PROJECT NO. 202130
DATE OCTOBER 9, 2021
DRAWN BY AS.4
CHECKED JRD
APPROVED JRD
REVISED

SHEET

AS.4



1 NOT USED
AS.4

2 NOT USED
AS.4

7 NOT USED
AS.4

8 NOT USED
AS.4

9 NORTH ELEVATION - BUILDING "B"
SCALE: 1/4"=1'-0"

14 WEST ELEVATION - BUILDING "B"
SCALE: 1/4"=1'-0"