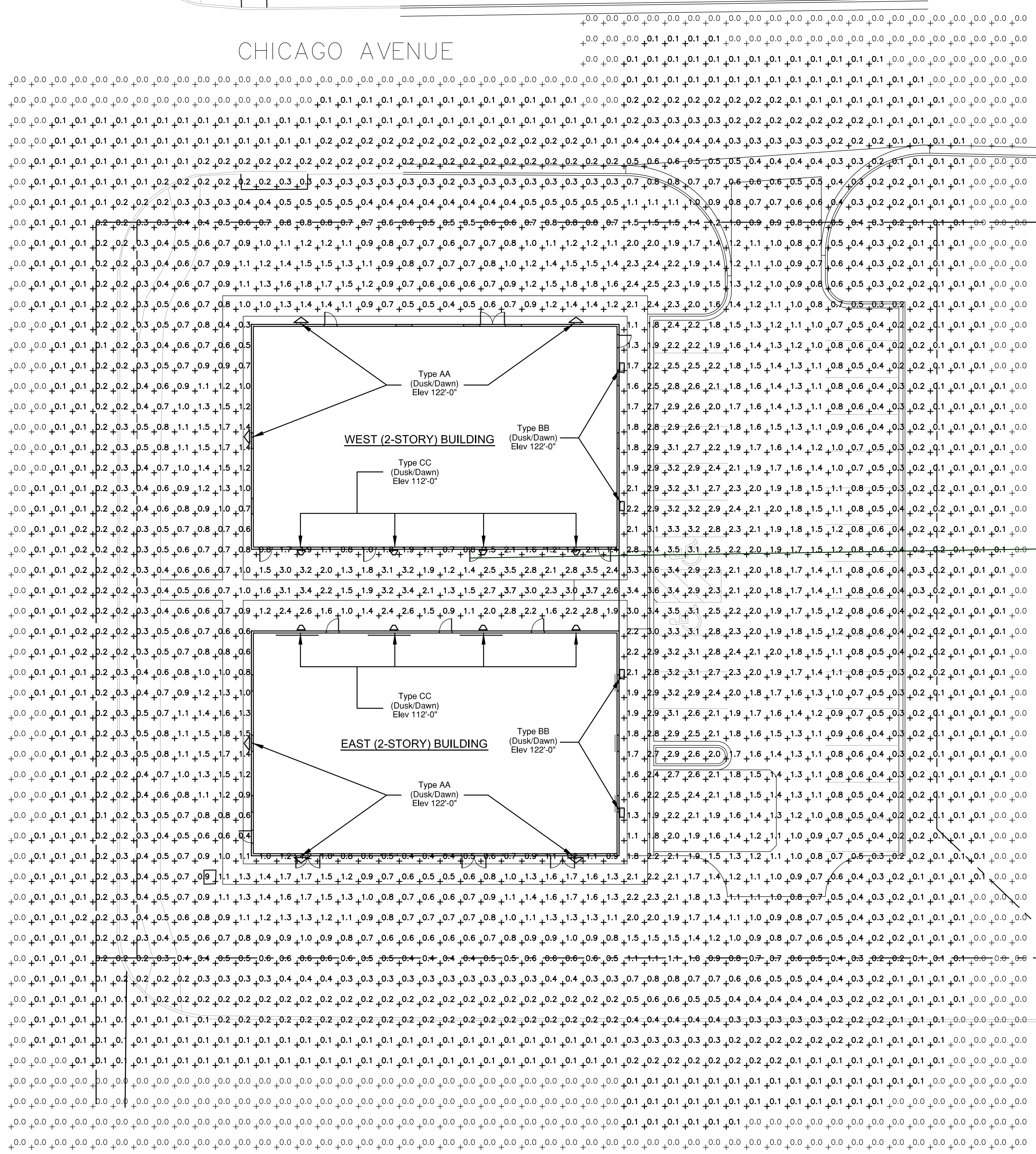


OLD MERIDIAN ROAD

CHICAGO AVENUE



Statistics						
Description	Symbol	Avg	Max	Min	Max/Min	Avg/Min
Calc. Zone #1	+	0.4 fc	3.7 fc	0.0 fc	N/A	N/A

- GENERAL NOTES:**
- REFER TO SHEET ELC.2 FOR FIXTURE SPECIFICATION SHEETS.
 - ALL LIGHTING WILL BE CONTROLLED BY PHOTOCELL FOR (DUSK/DAWN) OPERATION FOR SECURITY PURPOSES.
 - LIGHTING CALCULATIONS WERE COMPLETED UTILIZING VISUAL LIGHTING PROGRAM WITH ASSOCIATED, FIXTURE MANUFACTURER'S, PUBLISHED IES FILES.
 - ALL CALCULATIONS WERE DONE BY THE ENGINEER OF RECORD.

JOHN DAVIS DESIGN GROUP
 ARCHITECTS
 INTERIORS
 PLANNERS
 176 TALAMINE COURT
 SUITE 100
 COLORADO SPRINGS,
 COLORADO 80907
 P 719/528-1177
 F 719/444-8409

KOHNET ELECTRIC ENGINEER'S, INC.
 911 S. 8th Street, Ste 200
 Colorado Springs, Co 80905
 Phone (719) 633-2637

DO NOT SCALE DRAWINGS FOR CONSTRUCTION PURPOSES

THESE DRAWINGS ARE THE PROPERTY OF JOHN ARCHITECTS. THEY SHALL BE USED FOR THE SOLE PURPOSE OF CONSTRUCTING THIS PROJECT. THEY SHALL NOT BE REPRODUCED AND USED FOR THE PURPOSE OF CONSTRUCTION DOCUMENTS FOR ANY OTHER PROJECTS.

Exterior Site Lighting Calculation Plan

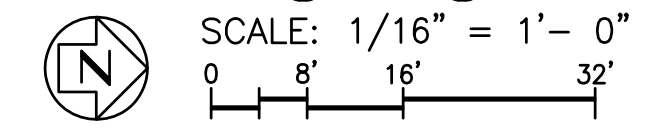
NEW METAL BUILDINGS FOR: KENSHIN MARTIAL ARTS COMPLEX
 CHICAGO AVENUE AND OLD MERIDIAN ROAD
 FALCON, COLORADO 80813

INDEX TO EXTERIOR LIGHTING CALCULATION DRAWINGS

ELC.1	EXTERIOR SITE LIGHTING POINT BY POINT CALCULATION AND STATISTICS
ELC.2	LIGHTING FIXTURE SPECIFICATION SHEETS

PROJECT NO.	202130
DATE	22 October 2021
DRAWN BY	mks
CHECKED	lmak
APPROVED	mks
REVISED	

Exterior Site Lighting Calculation Plan



Please add PCD File No. PPR-21-067

SHEET
ELC.1

