

PRELIMINARY CONSTRUCTION DRAWINGS  
**PAIN BRUSH HILLS METROPOLITAN DISTRICT**  
**PRESSURE REDUCING VALVES AND WATER SYSTEM IMPROVEMENTS**

LOCATED WITHIN THE NORTHWEST QUARTER OF SECTION 25,  
 TOWNSHIP 12 SOUTH, RANGE 65 WEST OF THE SIXTH PRINCIPAL MERIDIAN,  
 COUNTY OF EL PASO, STATE OF COLORADO

**JANUARY 2021**  
**BIDDING PLAN SET**

ISSUED FOR  
 CONSTRUCTION

**CONTACTS**

**OWNER**

PAIN BRUSH HILLS METROPOLITAN DISTRICT  
 9830 LIBERTY GROVE DRIVE  
 FALCOLN, CO 80831  
 ROBERT GUEVARA, DISTRICT MANAGER  
 (719) 495-8188, FAX (719) 495-8008

**ENGINEERING**

RG AND ASSOCIATES, LLC  
 4885 WARD ROAD, SUITE 100  
 WHEAT RIDGE, CO 80033  
 (303) 293-8107, FAX (303) 293-8106  
 RICARDO GONCALVES, PE  
 (303) 468-8494  
 EMAIL: RICKG@RGENGINEERS.COM



**VICINITY MAP**  
 1" = 500 FEET



1" = 200 FEET

**SHEET INDEX**

SHEET NO.	DESCRIPTION
1	COVER SHEET
2	KEY MAP
3	GENERAL NOTES
4	PRESSURE REDUCING VALVES (PRV) VAULTS
5-8	LONDONDERRY DRIVE WATER MAIN IMPROVEMENTS
<del>9-11</del>	<del>TOWNER AVENUE WATER MAIN IMPROVEMENTS</del>
12	GENERAL DETAILS
13-14	STRIPING PLAN

DELETED  
 FROM  
 PROJECT

**LEGEND**

- SANITARY CLEANOUT
- SANITARY MANHOLE
- SANITARY UNDERGROUND
- RIPRAP
- STORM LINE UNDERGROUND
- STORM CORRUGATED PLASTIC PIPE
- STORM INLET
- STORM MANHOLE
- WATER FIRE HYDRANT
- WATER LINE UNDERGROUND
- WATER MANHOLE
- WATER VALVE
- WATER STOPBOX
- ELECTRIC BREAKER BOX
- ELECTRIC CABINET
- ELECTRIC METER
- ELECTRIC PEDESTAL
- ELECTRIC POLE
- ELECTRIC TRANSFORMER
- ELECTRIC UNDERGROUND
- OVERHEAD UTILITY
- LIGHT POLE
- TELEPHONE LINE UNDERGROUND
- TELEPHONE PEDESTAL
- FIBER OPTIC UNDERGROUND
- FIBER OPTIC CABINET
- FIBER OPTIC MKR
- FIBER OPTICS PEDESTAL
- FIBER OPTIC VAULT
- CABLE TV PEDESTAL
- CABLE TV UNDERGROUND
- GAS LINE UNDERGROUND
- GAS METER
- GAS MKR POST
- IRRIGATION VALVE
- VENT PIPE
- WELL
- EX CONT-MJR
- EX CONT-MNR
- LANDSCAPE EDGE
- BUSH DECIDUOUS
- TREE CONIFER
- TREE DECIDUOUS
- FENCE
- SIDEWALK
- DRIVEWAY
- EDGE ASPHALT
- EDGE CONCRETE
- TRAIL
- CURB LIP OF GUTTER
- FLOWLINE
- BOLLARD
- SIGN
- CONCRETE
- ASPHALT PAVEMENT
- GRAVEL ROAD
- WALL
- PROPOSED CONCRETE
- PROPOSED ASPHALT
- PROPOSED GRAVEL
- PROPOSED RETAINING WALL

**El Paso County:**

County plan review is provided only for general conformance with County Design Criteria. The County is not responsible for the accuracy and adequacy of the design, dimensions, and/or elevations which shall be confirmed at the job site. The County through the approval of this document assumes no responsibility for completeness and/or accuracy of this document.

Filed in accordance with the requirements of the El Paso County Land Development Code, Drainage Criteria Manual, Volumes 1 and 2, and Engineering Criteria Manual as amended.

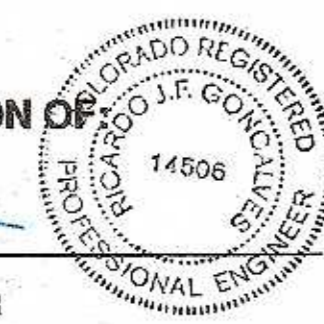
In accordance with ECM Section 1.12, these construction documents will be valid for construction for a period of 2 years from the date signed by the El Paso County Engineer. If construction has not started within those 2 years, the plans will need to be resubmitted for approval, including payment of review fees at the Planning and Community Development Directors discretion.

Jennifer Irvine, P.E.  
 County Engineer / ECM Administrator

Date

PREPARED UNDER THE SUPERVISION OF

RICARDO GONCALVES, P.E. PROJECT MANAGER

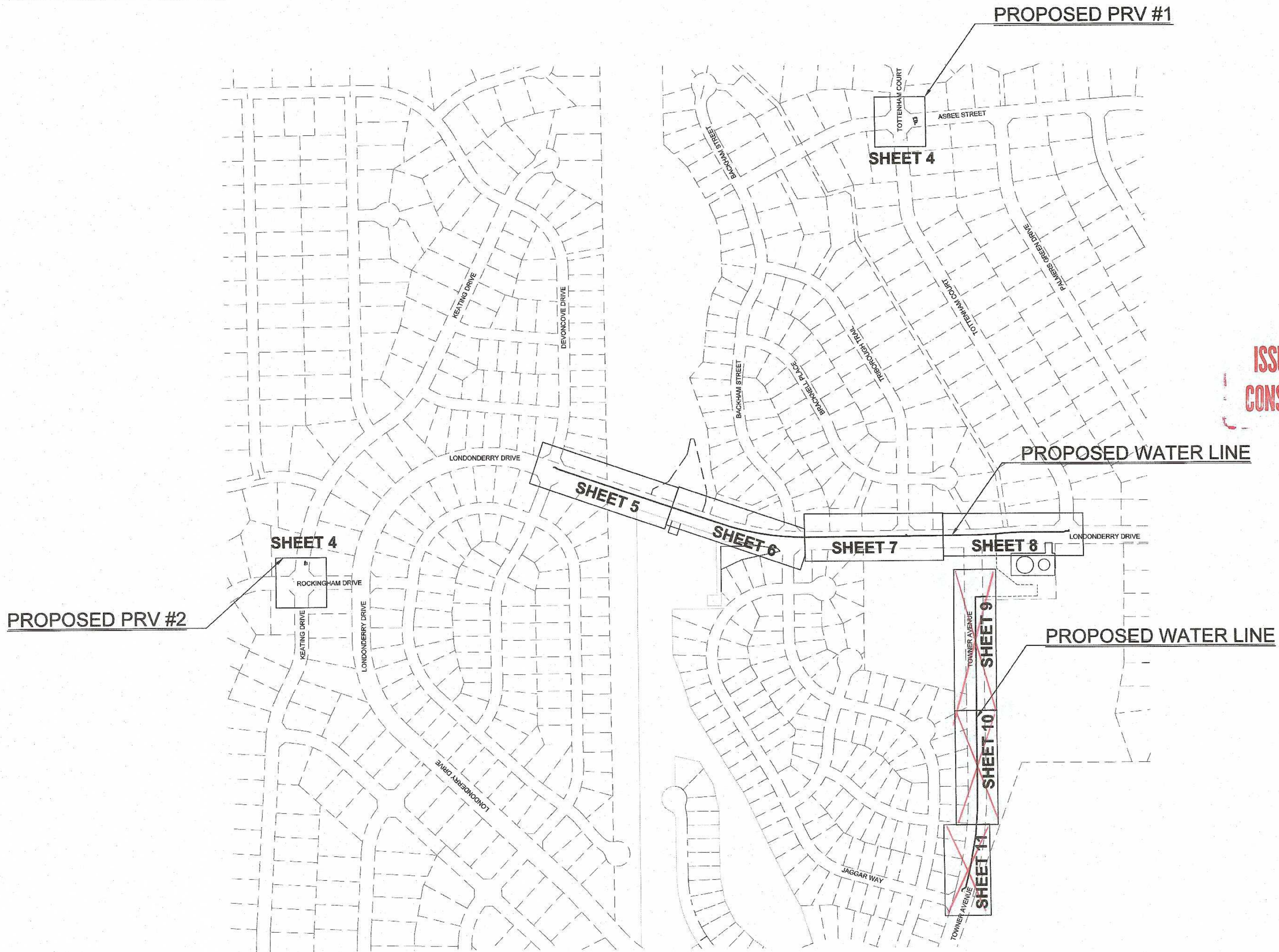


4/13/21  
 DATE

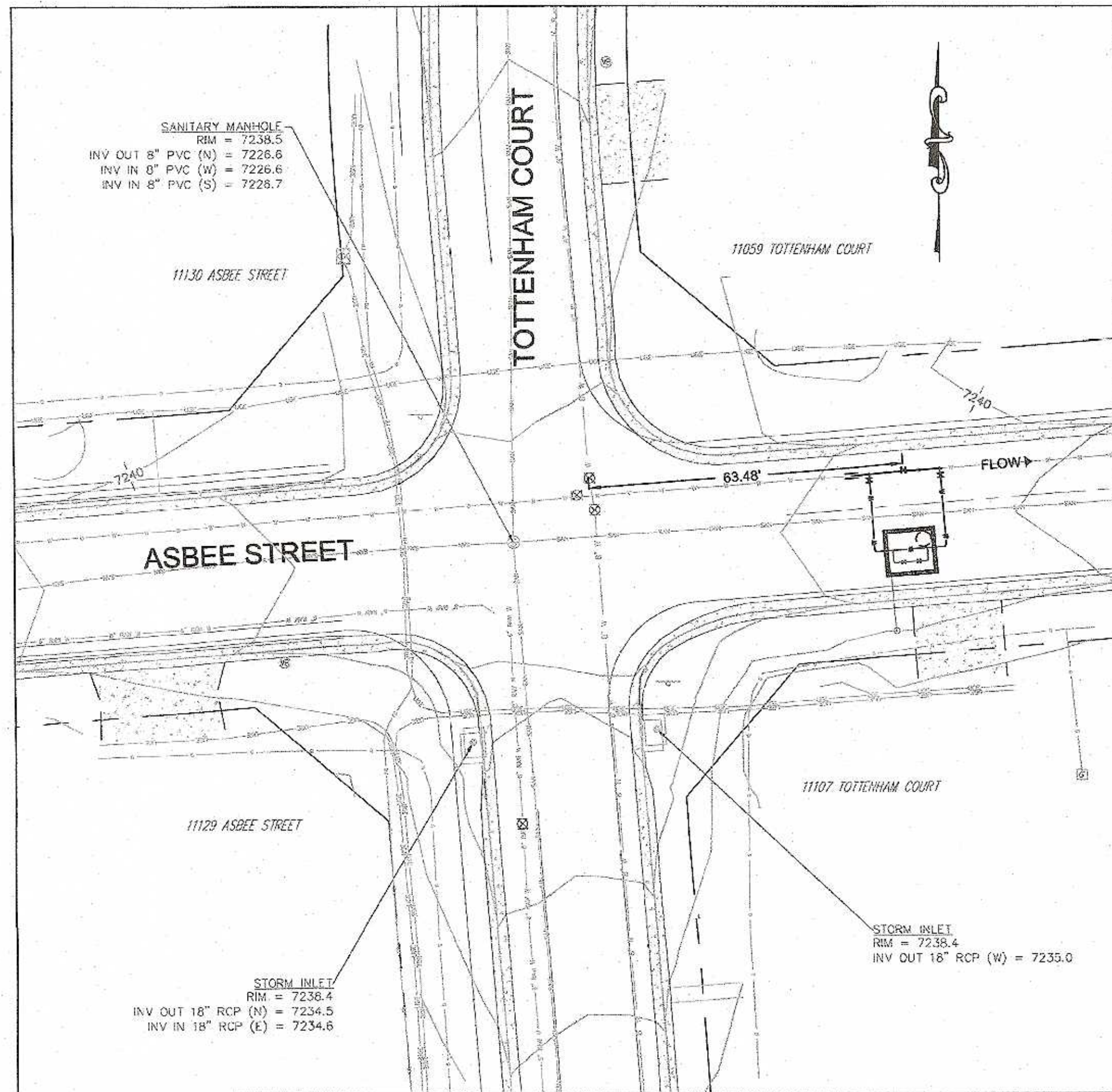
**RG AND ASSOCIATES, LLC**  
 4885 Ward Road, Suite 100 - Wheat Ridge, CO - 80033  
 303-293-8107 • 303-293-8106 (fax) • www.rgenengineers.com

**JOB NO. 1070.0015**  
**SHEET 1 of 14**

KAK w/RGA 4/12/21

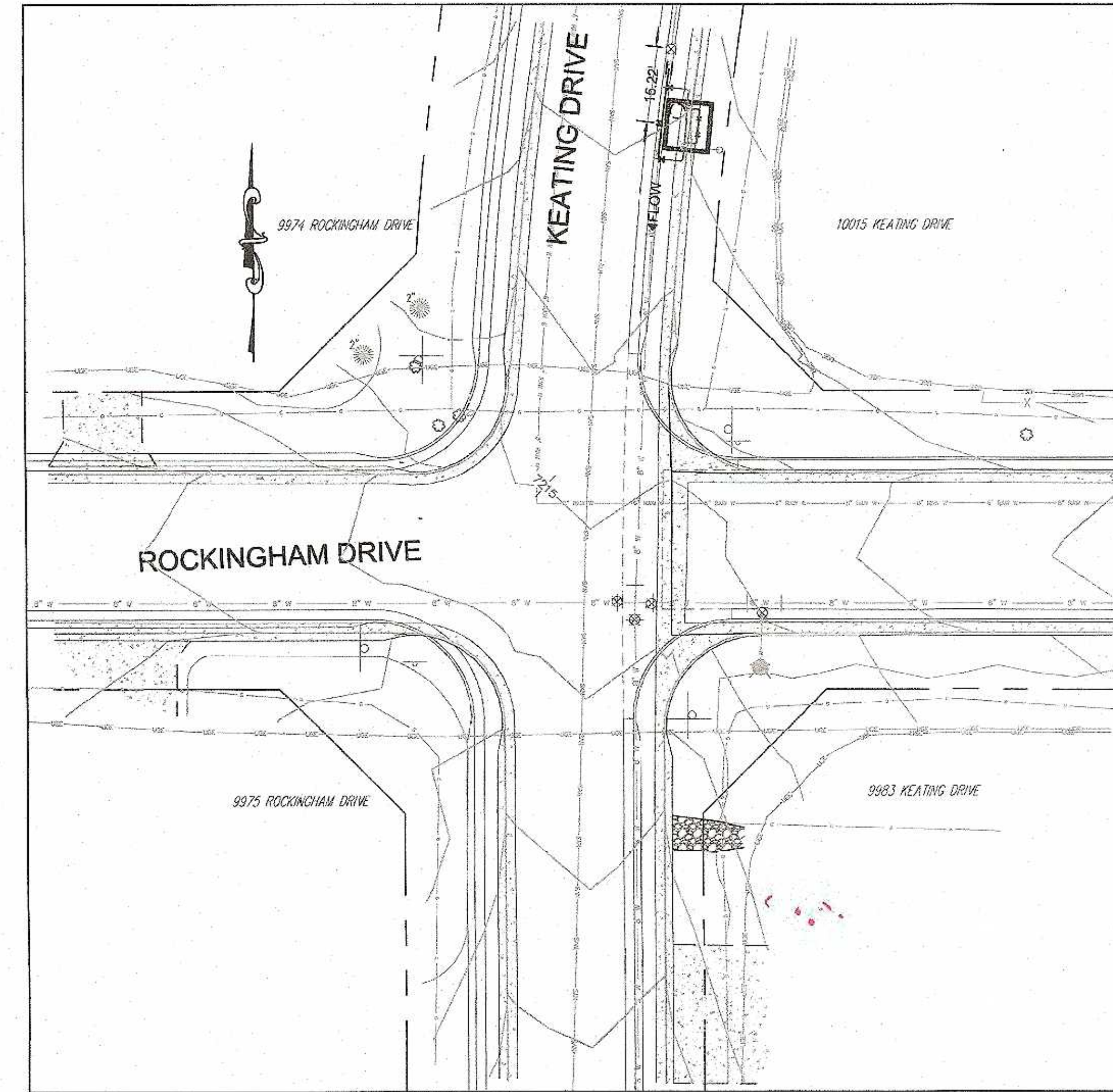


48 hours before you do. CALL UTILITY NOTIFICATION CENTER OF COLORADO (UNCC) <b>811</b> Gas, Electric, Telephone, Cable and Potable Water Lines Locations <b>SCALE VERIFICATION</b> BAR IS ONE INCH ON ORIGINAL DRAWING IF NOT ONE INCH ON THIS SHEET SCALE ACCORDINGLY			
NO.	DATE	BY	REVISIONS DESCRIPTION
0.	1/19/2021	KAK	
DRAWN BY: <b>MLA</b> DESIGNED BY: <b>RC</b> JOB NUMBER: <b>1070.0015</b> DATE: <b>JANUARY 2021</b> SCALE: <b>N/A</b> DRAWING NAME: <b>KEY MAP</b> SHEET NO.: <b>2</b> of <b>14</b>			
<b>WATER SYSTEM IMPROVEMENTS</b> description <b>KEY MAP</b>		prepared for <b>PAINT BRUSH HILLS METROPOLITAN DISTRICT</b> <b>EL PASO COUNTY, COLORADO</b>	
<b>RG AND ASSOCIATES, LLC</b> 4885 Ward Road, Suite 100 • Wheat Ridge, CO 80033 Gypsum • Loveland • Montie Vista • Wheat Ridge 303-955-8100 • 303-955-8106 (fax) • www.rgandassociates.com			



# PRV LOCATION #1

ASBEE STREET/TOTTENHAM COURT INTERSECTION



# PRV LOCATION #2

ROCKINGHAM DRIVE/KEATING DRIVE INTERSECTION



**NOTE:**  
 1) SEE DETAIL ON SHEET 11 FOR VAULTS PLAN, ELEVATION, AND LOCATION.  
 2) SEE CONTRACT DOCUMENTS BID ITEM DESCRIPTIONS FOR COMPLETE SCOPE OF WORK INCLUDING CURB AND GUTTER REPLACEMENT AND LANDSCAPING RESTORATION.

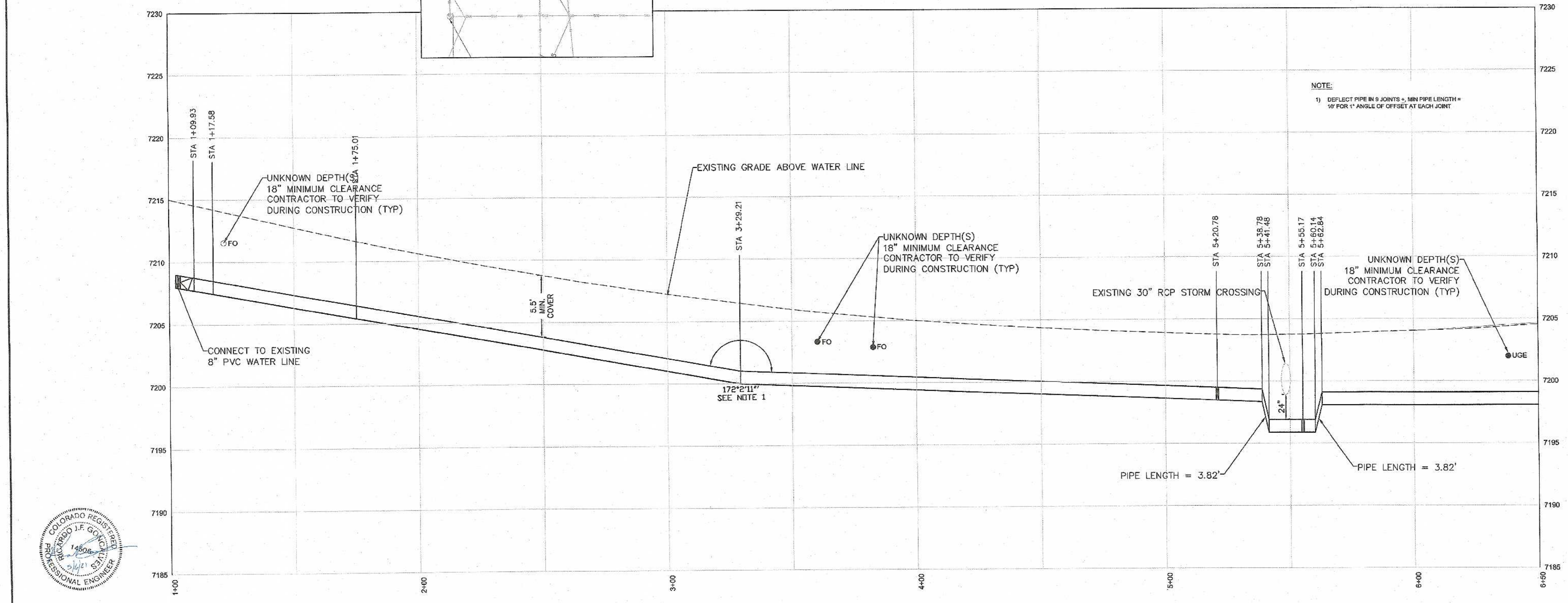
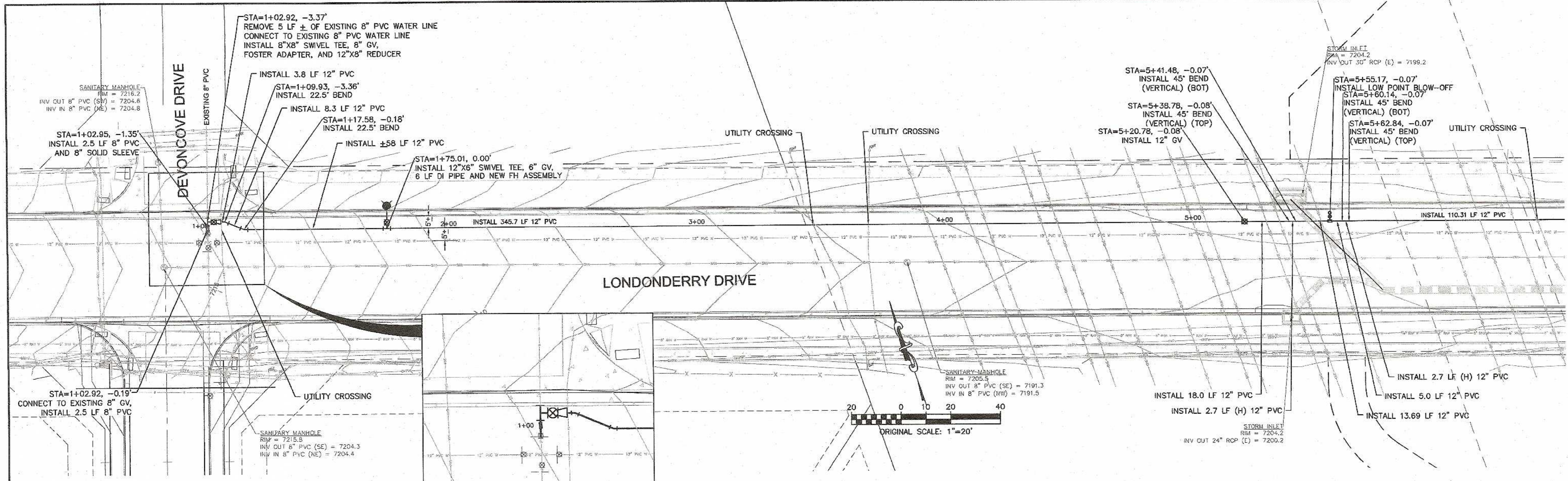
48 hours before you dig, CALL UTILITY NOTIFICATION CENTER OF COLORADO (800) 811-8111  
 One Bestway, Merden, CO, 80458  
 PO Box 1000, Merden, CO, 80458  
**SCALE VERIFICATION**  
 BAR IS ONE INCH ON ORIGINAL DRAWING  
 IF NOT ONE INCH ON THIS SHEET SCALE ACCORDINGLY

NO.	DATE	BY	DESCRIPTION
1	1/19/2021	KAK	ISSUED FOR CONSTRUCTION

**RG AND ASSOCIATES, LLC**  
 4885 Ward Road, Suite 100 • Wheat Ridge, CO 80033  
 Gypsum • Loveland • Monte Vista • Wheat Ridge  
 303-293-8107 • 303-293-8105 (fax) • www.rgandassociates.com

**WATER SYSTEM IMPROVEMENTS**  
 presented by  
**PRESSURE REDUCING VALVE (PRV) VAULTS**  
 presented by  
**PAINT BRUSH HILLS METROPOLITAN DISTRICT**  
 EL PASO COUNTY, COLORADO

DRAWN BY:	DESIGNED BY:
MLA	RG/KAK
JOB NUMBER:	
1070.0015	
DATE:	
JANUARY 2021	
SCALE:	
1" = 20'	
DRAWING NAME:	
PRVs	
SHEET NO.:	
4 of 14	

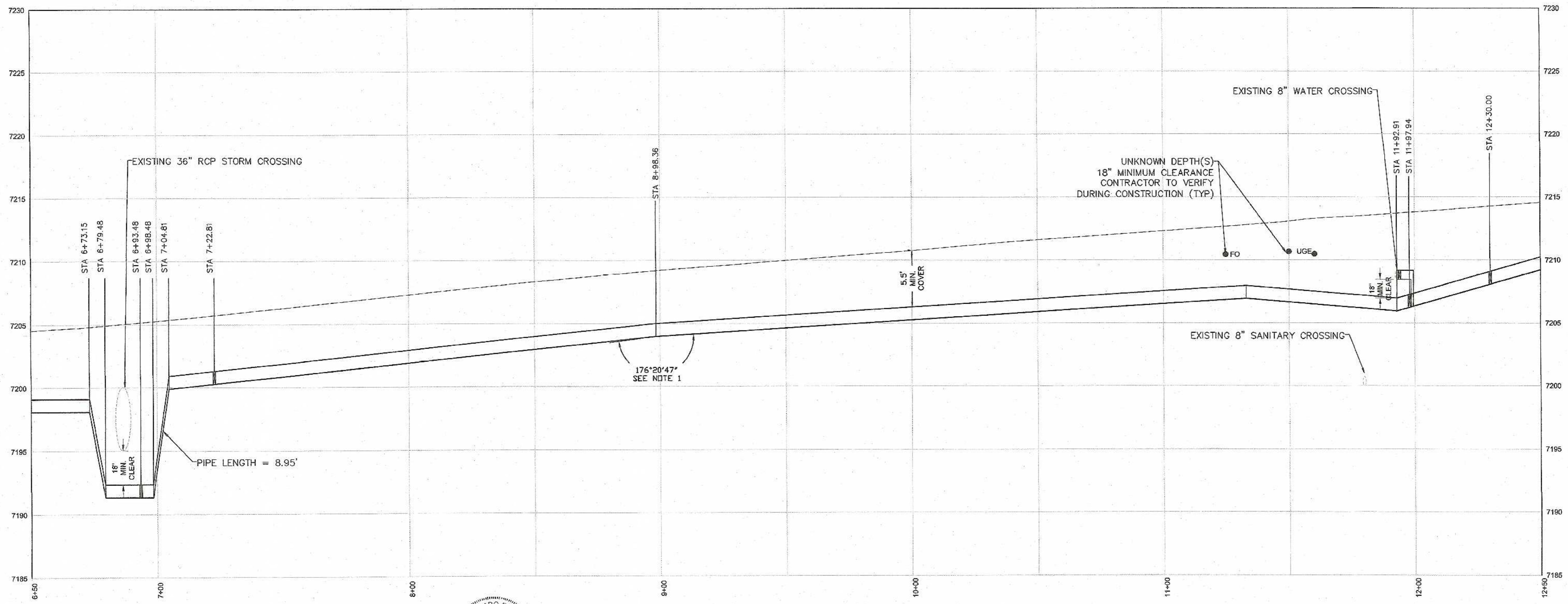
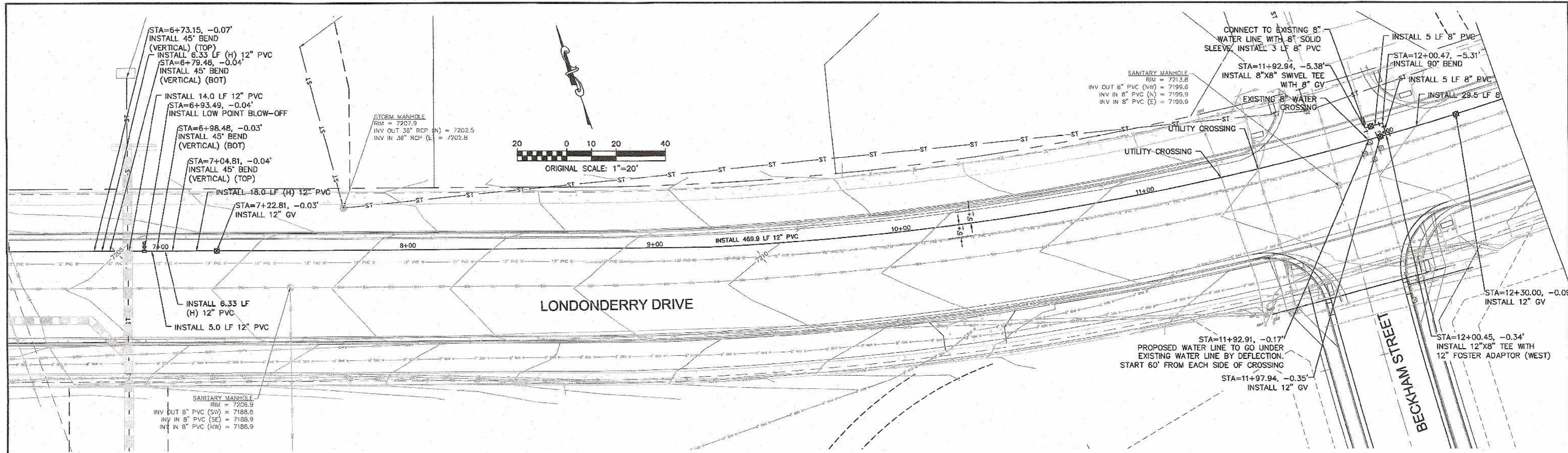


LONDONDERRY WATER LINE PROFILE  
 HORIZ. SCALE: 1" = 20'  
 VERT. SCALE: 1" = 4'

811 CALL UTILITY NOTIFICATION CENTER OF COLORADO (UNCC)	
Gas Electric Telephone Cable and Potentials Eastern Pipeline Locations	
SCALE VERIFICATION BAR IS ONE INCH ON ORIGINAL DRAWING IF NOT ONE INCH ON THIS SHEET SCALE ACCORDINGLY	
REVISIONS NO.   DATE   BY   DESCRIPTION	ISSUED FOR CONSTRUCTION
RG AND ASSOCIATES, LLC 4835 Ward Road, Suite 100 - Wheat Ridge, CO 80035 Gypsum • Loveland • Monte Vista • Wheat Ridge 303-293-8107 • 303-293-8106 (fax) • www.rgengineers.com	
WATER SYSTEM IMPROVEMENTS WATER SYSTEM IMPROVEMENTS LONDONDERRY DRIVE PREPARED FOR PAINTE BRUSH HILLS METROPOLITAN DISTRICT EL PASO COUNTY, COLORADO	
DRAWN BY: MLA	DESIGNED BY: RG/KAK
JOB NUMBER: 1070.0015	
DATE: JANUARY 2021	
SCALE: 1" = 20'	
DRAWING NAME: WATER SYSTEM	
SHEET NO: 5 of 14	

SA1070 - Paint Brush Hills Metropolitan District Water System Improvements Main Extension/Div. 1/18/2021 10:21:13 AM, DWG TO PDF.PC3



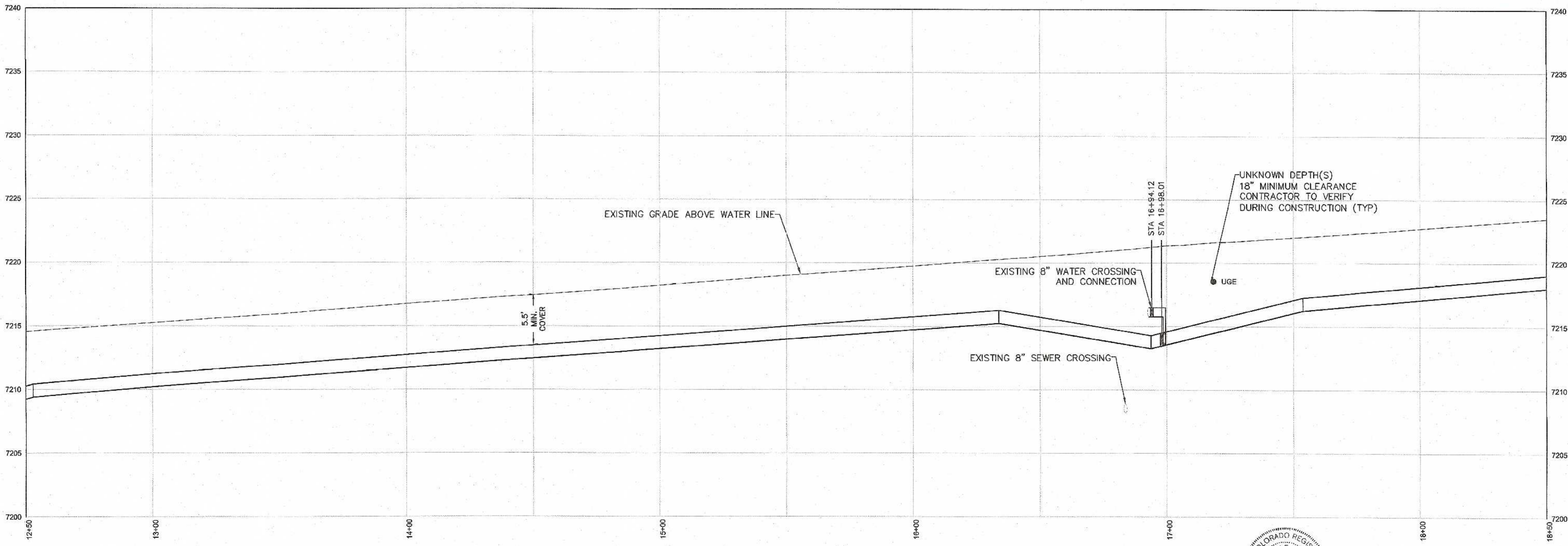
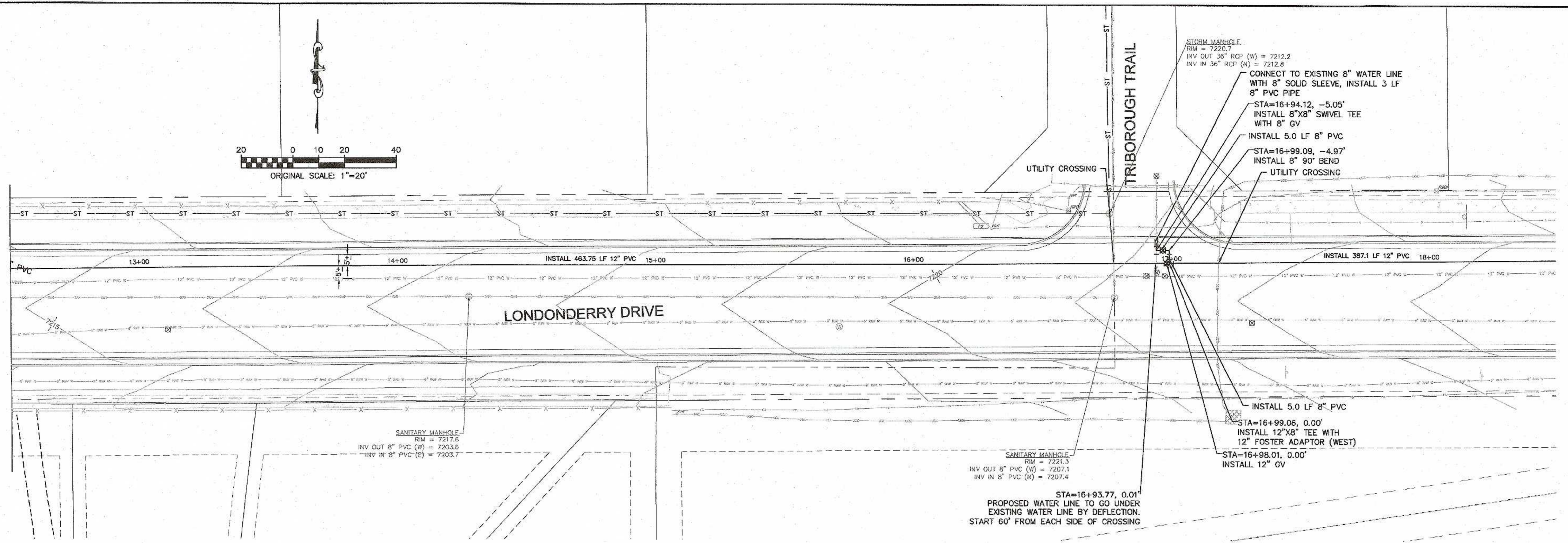
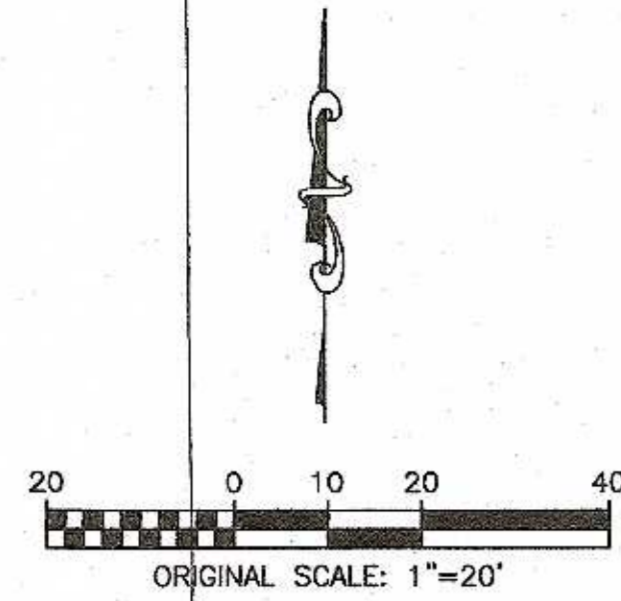


LONDONDERRY WATER LINE PROFILE  
 HORIZ. SCALE: 1" = 20'  
 VERT. SCALE: 1" = 4'

NOTE:  
 1) DEFLECT PIPE IN 5 JOINTS. MIN PIPE LENGTH = 10'  
 FOR 1" ANGLE OF OFFSET AT EACH JOINT

AS SHOWN BEFORE THE CALL UTILITY NOTIFICATION CENTER OF COLORADO (UNCC)	
<b>811</b> <small>Gas Electric Telephone Cable and          Potable Water Sewer and          Sanitary Storm</small>	
SCALE VERIFICATION BAR IS ONE INCH ON ORIGINAL DRAWING IF NOT ONE INCH ON THIS SHEET SCALE ACCORDINGLY	
NO.	FOR BID
NO.	DESCRIPTION
1	ISSUED FOR CONSTRUCTION
DATE	BY
1/18/2021	KAK
<b>RRG and Associates, LLC</b> <small>4835 Ward Road, Suite 100 - Wheat Ridge, CO - 80033          Gypsum - Loveland - Montrose - Vero - Wheat Ridge          303-958-8107 - 303-958-126 (fax) - www.rrgassociates.com</small>	
WATER SYSTEM IMPROVEMENTS WATER SYSTEM IMPROVEMENTS LONDONDERRY DRIVE PREPARED FOR PAINT BRUSH HILLS METROPOLITAN DISTRICT EL PASO COUNTY, COLORADO	
DRAWN BY:	DESIGNED BY:
MLA	RG/KAK
JOB NUMBER:	
1070.0015	
DATE:	
JANUARY 2021	
SCALE:	
1" = 20'	
DRAWING NAME:	
WATER SYSTEM	
SHEET NO.:	
6	of 14



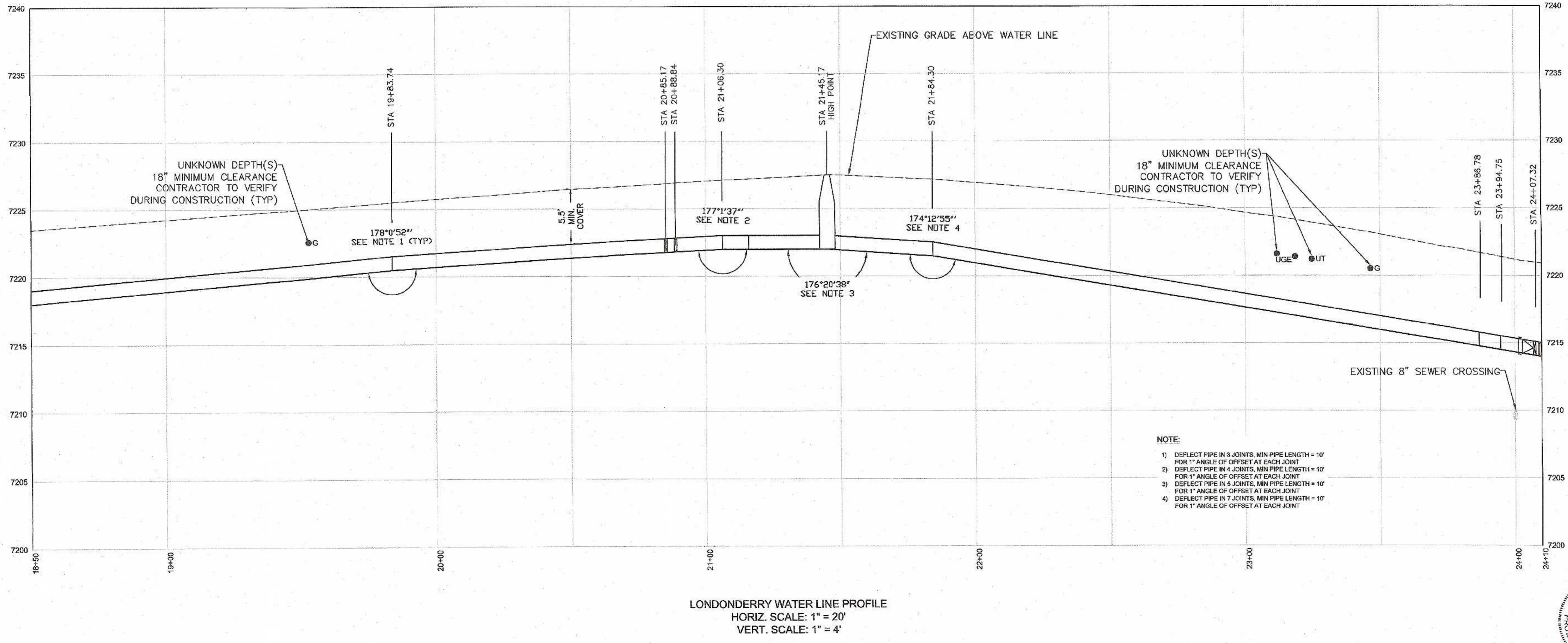
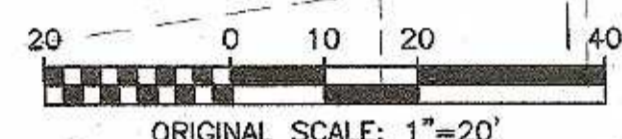
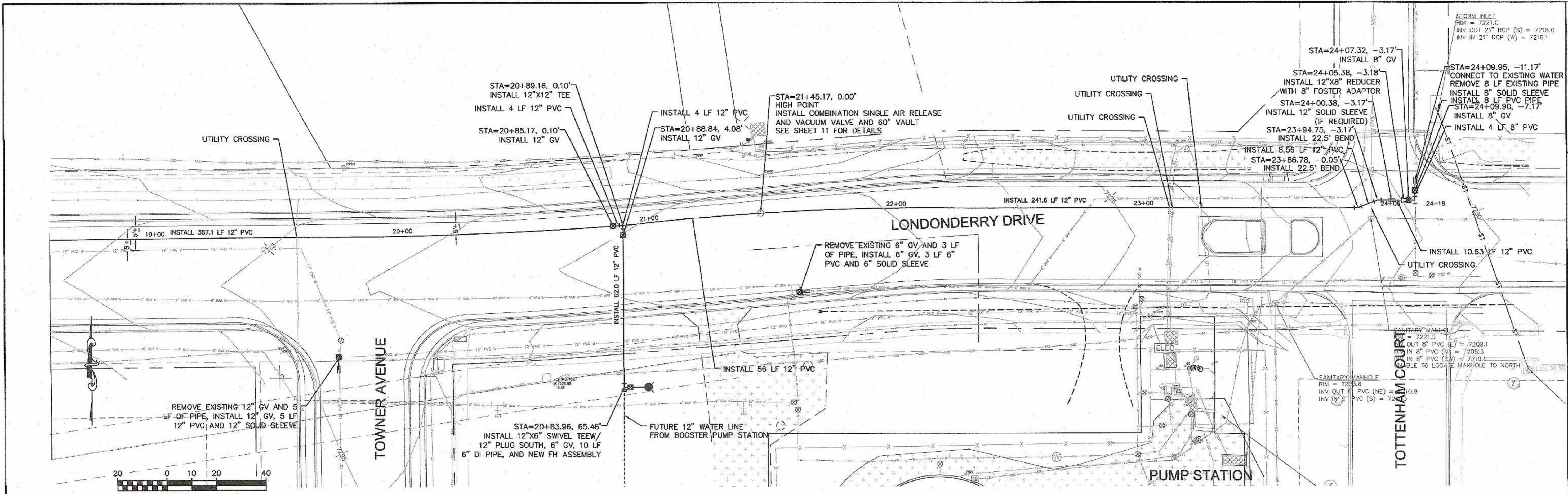


LONDONDERRY WATER LINE PROFILE  
 HORIZ. SCALE: 1" = 20'  
 VERT. SCALE: 1" = 4'



48 hours before you dig, CALL UTILITY NOTIFICATION CENTER OF COLORADO (UNCC) <b>811</b> Gas, Electric, Telephone, Cable and Sewer <b>SCALE VERIFICATION</b> BAR IS ONE INCH ON ORIGINAL DRAWING IF NOT ONE INCH ON THIS SHEET SCALE ACCORDINGLY	
<b>REVISIONS</b> NO. DESCRIPTION DATE BY 1 1/16/2021 KAK	<b>ISSUED FOR CONSTRUCTION</b>
<b>RG AND ASSOCIATES, LLC</b> 4885 Ward Road, Suite 100 • Wheat Ridge, CO - 80033 Gypsum • Loveland • Monte Vista • Wheat Ridge 303-933-3107 • 303-292-2006 (fax) • www.rgassociates.com	
<b>WATER SYSTEM IMPROVEMENTS</b> WATER SYSTEM IMPROVEMENTS LONDONDERRY DRIVE PREPARED BY PAINT BRUSH HILLS METROPOLITAN DISTRICT EL PASO COUNTY, COLORADO	
DRAWN BY: MLA	DESIGNED BY: RG/KAK
JOB NUMBER: 1070.0015	
DATE: JANUARY 2021	
SCALE: 1" = 20'	
DRAWING NAME: WATER SYSTEM	
SHEET NO: 7 of 14	

S:\070 - Paint Brush Hills Metropolitan District\070.0015 - Water System Improvements\Main Station.dwg, 1/16/2021 3:55:59 PM DWG to PDF.pcd



- NOTE:
- 1) DEFLECT PIPE IN 3 JOINTS, MIN PIPE LENGTH = 10' FOR 1" ANGLE OF OFFSET AT EACH JOINT
  - 2) DEFLECT PIPE IN 4 JOINTS, MIN PIPE LENGTH = 10' FOR 1" ANGLE OF OFFSET AT EACH JOINT
  - 3) DEFLECT PIPE IN 5 JOINTS, MIN PIPE LENGTH = 10' FOR 1" ANGLE OF OFFSET AT EACH JOINT
  - 4) DEFLECT PIPE IN 7 JOINTS, MIN PIPE LENGTH = 10' FOR 1" ANGLE OF OFFSET AT EACH JOINT

811  
 48 hours before work. CALL UTILITY NOTIFICATION CENTER at 800-485-5844  
 Go Electric, Water, Gas, and Telephone. Enter Pipeline Location  
**SCALE VERIFICATION**  
 BAR IS ONE INCH ON ORIGINAL DRAWING  
 IF NOT IN THIS SHEET SCALE ACCORDINGLY

No.	DATE	DESCRIPTION
1	1/18/2021	10A

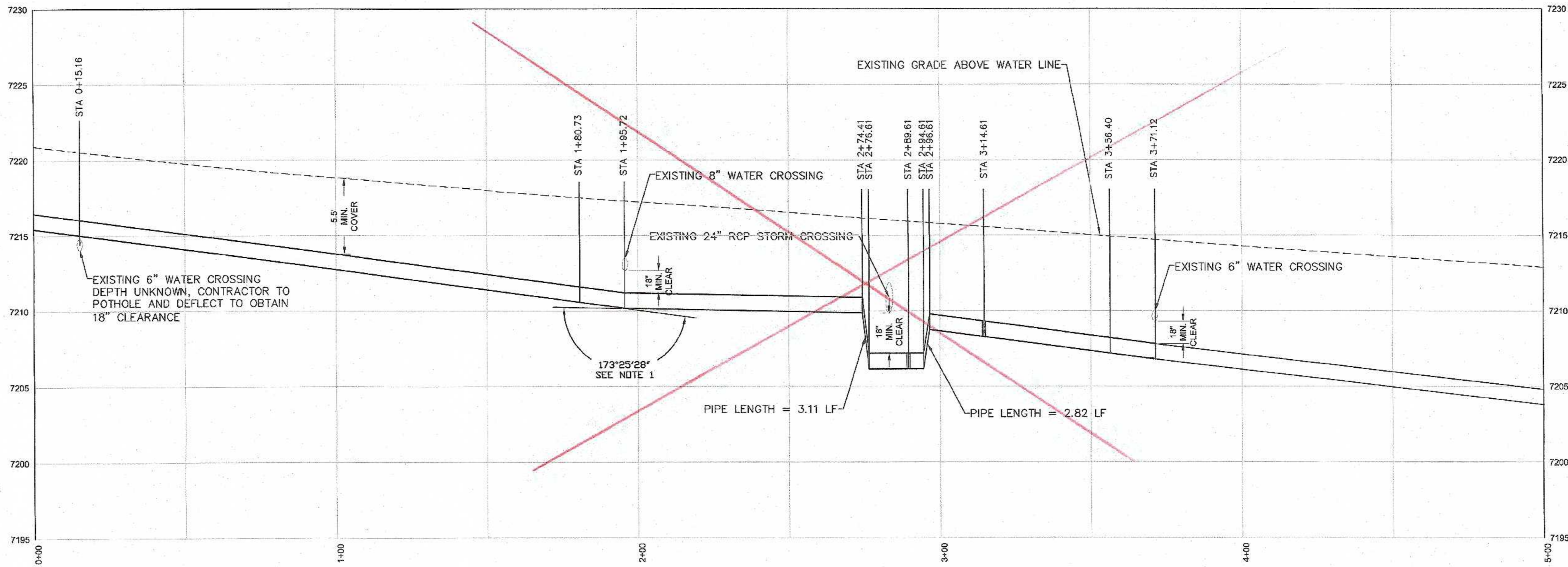
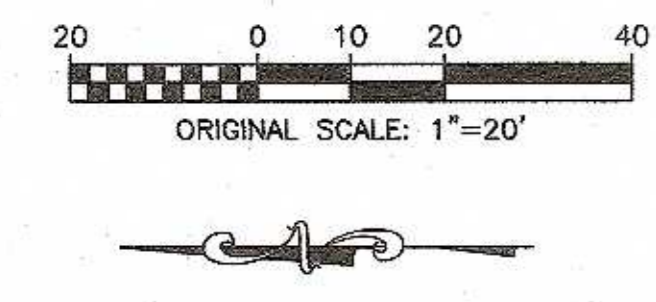
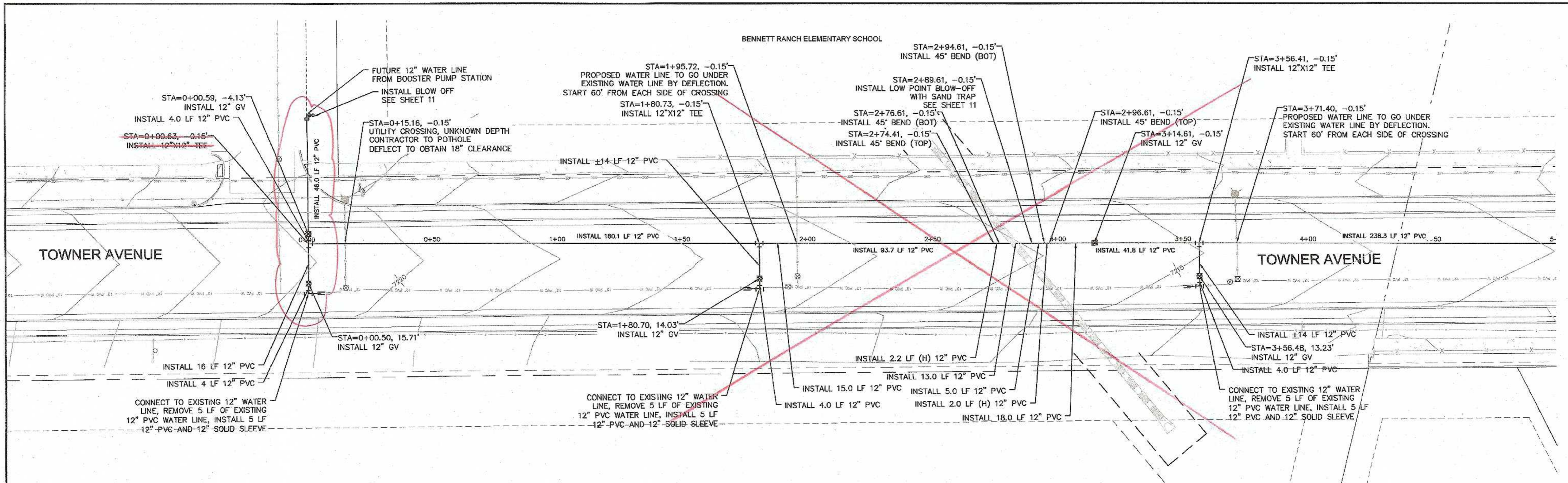
**ISSUED FOR CONSTRUCTION**

**IRG AND ASSOCIATES, LLC**  
 4885 Ward Road, Suite 100 - Wheat Ridge, CO - 80035  
 Gypsum - Loveland - Monte Vista - Wrenn - Ridge  
 303-953-8107 - 303-953-8105 (fax) - www.irq.com

WATER SYSTEM IMPROVEMENTS  
 WATER SYSTEM IMPROVEMENTS  
 LONDONDERRY DRIVE  
 PREPARED FOR  
 PAINT BRUSH HILLS METROPOLITAN DISTRICT  
 EL PASO COUNTY, COLORADO

DRAWN BY: ML/A  
 DESIGNED BY: RG/KAK  
 JOB NUMBER: 1070.0015  
 DATE: JANUARY 2021  
 SCALE: 1" = 20'  
 DRAWING NAME: WATER SYSTEM  
 SHEET NO: 8 of 14





**NOTE:**  
 1) DEFLECT PIPE IN 6 JOINTS, MIN PIPE LENGTH = 10' FOR 1" ANGLE OF OFFSET AT EACH JOINT

**TOWNER WATER LINE PROFILE**  
 HORIZ. SCALE: 1" = 20'  
 VERT. SCALE: 1" = 4'



48 hours before you dig, CALL UTILITY NOTIFICATION CENTER OF COLORADO (UNCC) **811**  
 Call before you dig. Call 811. Dig Safe. Dig Smart.  
 SCALE VERIFICATION  
 BAR IS ONE INCH ON ORIGINAL DRAWING IF NOT ONE INCH ON THIS SHEET SCALE ACCORDINGLY!

NO.	DATE	BY	DESCRIPTION
1	1/19/2021	KAK	ISSUED FOR CONSTRUCTION

**RG AND ASSOCIATES, LLC**  
 4885 Ward Road, Suite 100 - Wheat Ridge, CO - 80033  
 Gypsum - Loveland - Monte Vista - Wheat Ridge  
 303-293-8107 - 303-293-8105 (fax) - www.rgassociates.com

**WATER SYSTEM IMPROVEMENTS**  
 WATER SYSTEM IMPROVEMENTS  
 TOWNER AVENUE  
 PAINT BRUSH HILLS METROPOLITAN DISTRICT  
 EL PASO COUNTY, COLORADO

DRAWN BY: MLA	DESIGNED BY: RG/KAK
JOB NUMBER: 1070.0015	
DATE: JANUARY 2021	
SCALE: 1" = 20'	
DRAWING NAME: WATER SYSTEM	
SHEET NO: 9 of 14	