



Community Development Department  
International Circle, Suite 110  
Colorado Springs, CO 80910

DLNVLK CO 80  
7 OCT 2021 P

FIRST-CLASS



02 7H \$ 000.53<sup>0</sup>  
0001332609 OCT 06 2021  
MAILED FROM ZIP CODE 80910

7124204114  
CHAU WAIFU  
17008 BLUE MIST GRV  
MONUMENT, CO 80132

NIXIE 808 FE 1 0010/12/21  
RETURN TO SENDER  
NOT DELIVERABLE AS ADDRESSED  
UNABLE TO FORWARD  
BC: 80910610790 \*1320-06145-07-43

UTF  
001320-06145-07-43



**EL PASO COUNTY**  
**COLORADO**

COMMISSIONERS:  
STAN VANDERWERF (CHAIR)  
CAMI BREMER (VICE-CHAIR)

LONGINOS GONZALEZ, JR.  
HOLLY WILLIAMS  
CARRIE GEITNER

PLANNING AND COMMUNITY DEVELOPMENT DEPARTMENT  
CRAIG DOSSEY, EXECUTIVE DIRECTOR

10/6/2021

RE: Cloverleaf Filing No. 2 – Administrative Relief



File: ADR2110

Parcel ID Nos.: 71231-03-007, 71242-02-236, 71242-02-239, and 71242-02-242

To Whom It May Concern:

This letter is to inform property owners adjacent to Cloverleaf Filing No. 2 Subdivision that the applicant, PT Cloverleaf LLC, has requested approval of an application for administrative relief to administrative relief for lot coverage.

The Planning and Community Development Department Director may make a formal decision regarding the administrative relief application on 10/21/2021. Any comments or questions may be forwarded to me prior to that decision. Administrative approval by the Planning and Community Development Department Director is subject to the appeal provisions of the Land Development Code.

You may view the application documents online at [www.epcdevplanreview.com](http://www.epcdevplanreview.com). Please feel free to contact me with any questions, comments, or concerns you may have prior to the decision.

Respectfully,

Nina Ruiz, Planning Manager  
El Paso County Planning and Community Development  
719-520-6313  
NinaRuiz@elpasoco.com

2880 INTERNATIONAL CIRCLE, SUITE 110  
PHONE: (719) 520-6300



COLORADO SPRINGS, CO 80910-3127  
FAX: (719) 520-6695

[www.ELPASOCO.COM](http://www.ELPASOCO.COM)

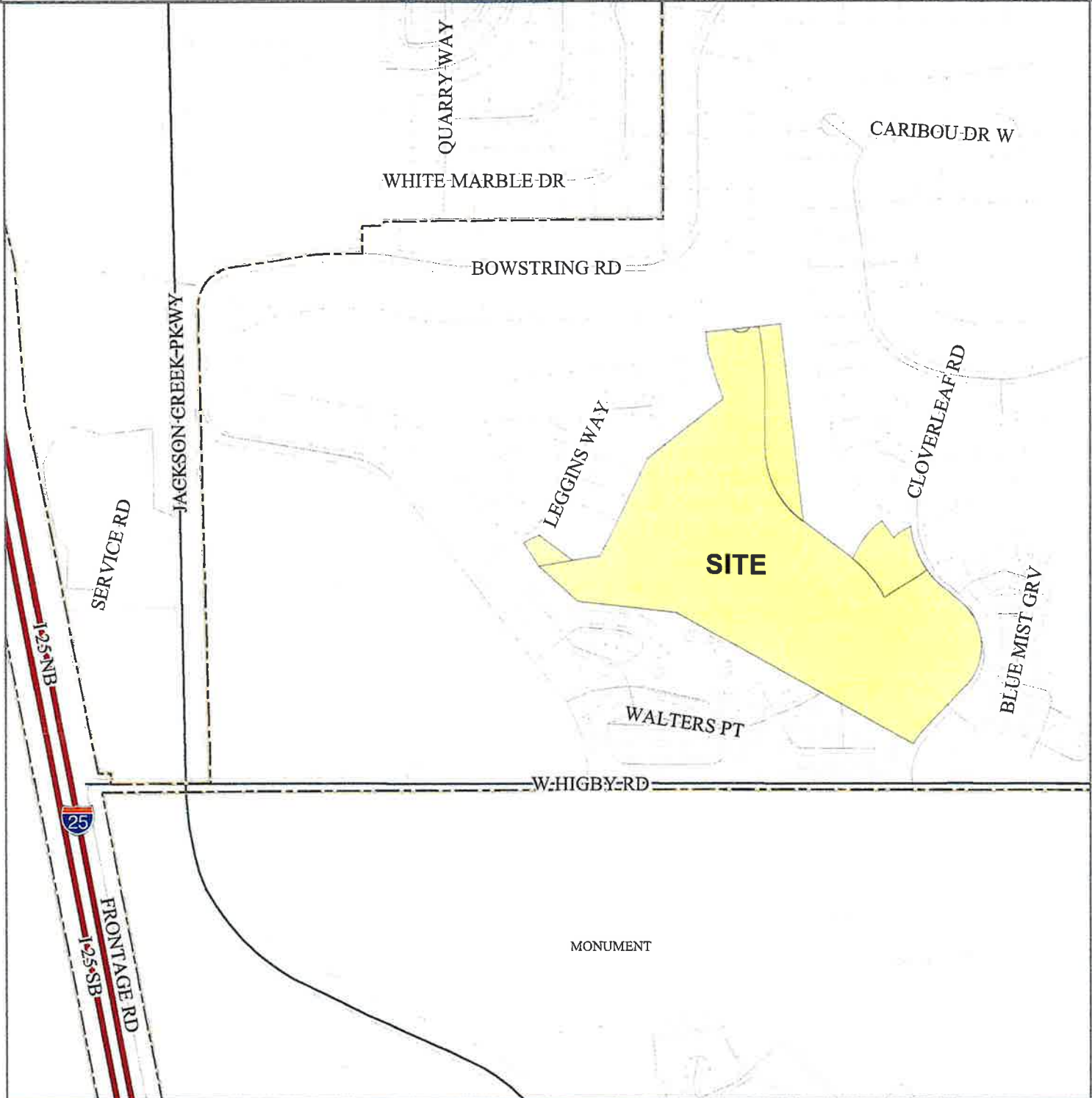
# El Paso County Parcel Information

PA  
712  
712  
712  
712

File Name:

Zone Map No.

Date:



Please report any parcel discrepancies to:  
El Paso County Assessor  
1675 W. Garden of the Gods Rd.  
Colorado Springs, CO 80907  
(719) 520-6600



COPYRIGHT 2018 by the Board of County Commissioners, El Paso County, Colorado. All rights reserved. No part of this document or data contained herein may be reproduced, used to prepare derivative products, or distributed without the specific written approval of the Board of County Commissioners, El Paso County, Colorado. This document was prepared from the best data available at the time of printing. El Paso County, Colorado, makes no claim as to the completeness or accuracy of the data contained herein.