

EL PASO COUNTY
COLORADO

COMMISSIONERS:
STAN VANDERWERF (CHAIR)
CAMI BREMER (VICE-CHAIR)

LONGINOS GONZALEZ, JR.
HOLLY WILLIAMS
CARRIE GETTNER

PLANNING AND COMMUNITY DEVELOPMENT DEPARTMENT
CRAIG DOSSEY, EXECUTIVE DIRECTOR

*Copy/mailed
10/6/21
EK*

10/6/2021

RE: Cloverleaf Filing No. 2 – Administrative Relief

File: ADR2110

Parcel ID Nos.: 71231-03-007, 71242-02-236, 71242-02-239, and 71242-02-242

To Whom It May Concern:

This letter is to inform property owners adjacent to Cloverleaf Filing No. 2 Subdivision that the applicant, PT Cloverleaf LLC, has requested approval of an application for administrative relief to administrative relief for lot coverage.

The Planning and Community Development Department Director may make a formal decision regarding the administrative relief application on 10/21/2021. Any comments or questions may be forwarded to me prior to that decision. Administrative approval by the Planning and Community Development Department Director is subject to the appeal provisions of the Land Development Code.

You may view the application documents online at www.epcdevplanreview.com. Please feel free to contact me with any questions, comments, or concerns you may have prior to the decision.

Respectfully,

Nina Ruiz, Planning Manager
El Paso County Planning and Community Development
719-520-6313
NinaRuiz@elpasoco.com

2880 INTERNATIONAL CIRCLE, SUITE 110
PHONE: (719) 520-6300



COLORADO SPRINGS, CO 80910-3127
FAX: (719) 520-6695

WWW.ELPASOCO.COM

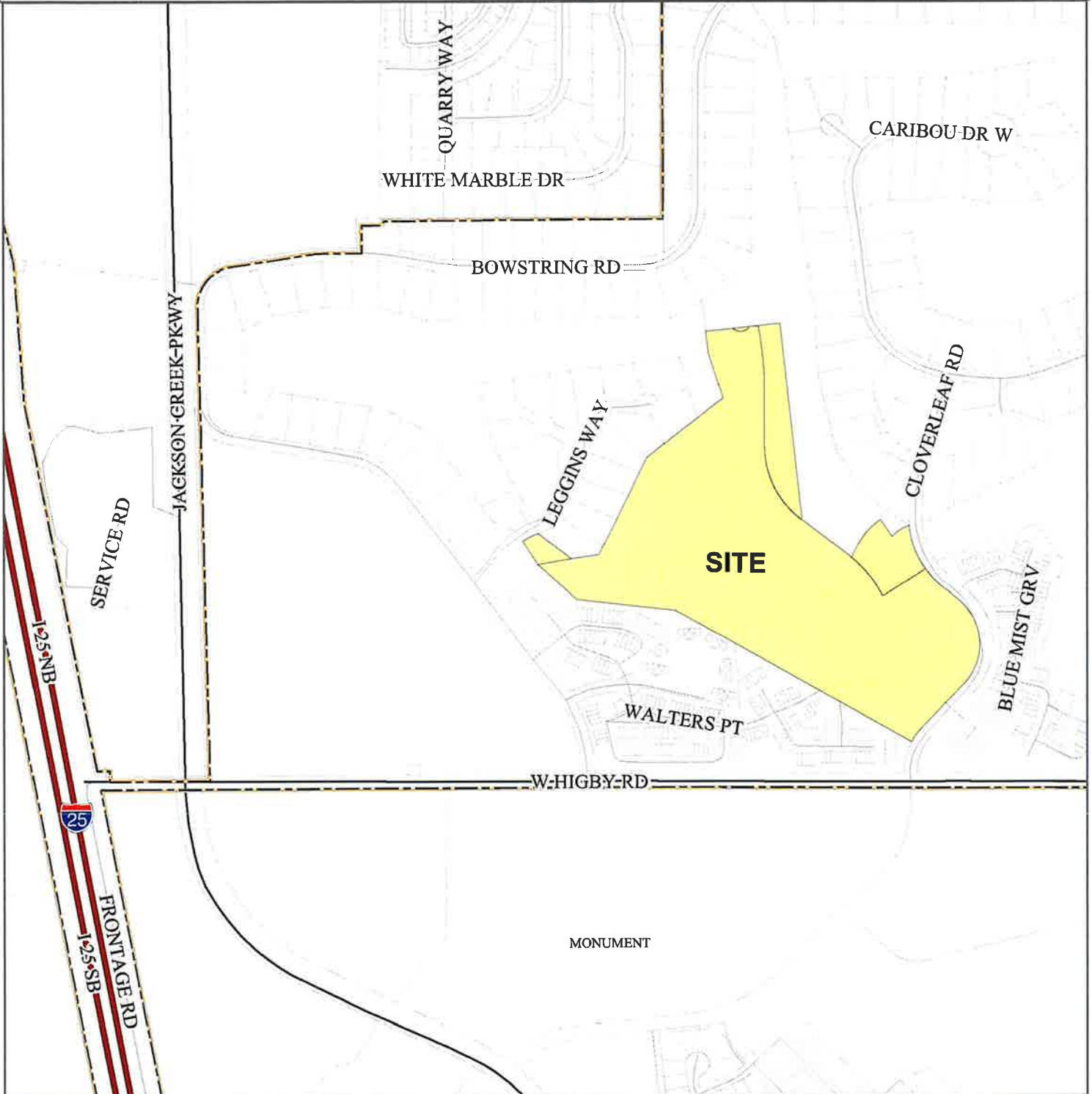
El Paso County Parcel Information

PA
712
712
712
712

File Name:

Zone Map No.

Date:



Please report any parcel discrepancies to:
El Paso County Assessor
1675 W. Garden of the Gods Rd.
Colorado Springs, CO 80907
(719) 520-6600



COPYRIGHT 2018 by the Board of County Commissioners, El Paso County, Colorado. All rights reserved. No part of this document or data contained hereon may be reproduced; used to prepare derivative products; or distributed without the specific written approval of the Board of County Commissioners, El Paso County, Colorado. This document was prepared from the best data available at the time of printing. El Paso County, Colorado, makes no claim as to the completeness or accuracy of the data contained hereon.

7124202074
ALLEN WILLIAM R
1242 TIMBER RUN HTS
MONUMENT, CO 80132

7124202072
AUNG LU MIN
1254 TIMBER RUN HTS
MONUMENT, CO 80132

7124202020
BAUTH VICKIE
1120 MAGIC LAMP WAY UNIT 2
MONUMENT, CO 80132

7124202181
BECK RACHEL
1046 WALTERS PT
MONUMENT, CO 80132

7123103004
BEDOYA ANDREI
17265 LEGGINS WAY
MONUMENT, CO 80132

7124204135
BEER ALICIA L
887 TIMBER LAKES GRV
MONUMENT, CO 80132

7124202231
BLOOM JAMES C
1813 EDWARD WAY
PITTSBURGH, PA 15203

7124203007
BOEHM TIMOTHY A
17330 CLOVERLEAF RD
MONUMENT, CO 80132

7124204148
BOPP RICHARD N JR
1140 GENERALS HWY
CROWNSVILLE, MD 21032

7124202071
BOTVINIK REBECCA M
1350 BOWSTRING RD
MONUMENT, CO 80132

7124202212
BREESE DEWAYNE D
932 BURNING BUSH PT
MONUMENT, CO 80132

7124202214
BURNING BUSH POINT LLC
15025 BRONCO DR
COLORADO SPRINGS, CO 80921

7124202229
CALLAN JAMES
905 BURNING BUSH PT
MONUMENT, CO 80132

7123103003
CAMPBELL STACY
17285 LEGGINS WAY
MONUMENT, CO 80132

7124202073
CAPISTRANO RENATO H
1248 TIMBER RUN HTS
MONUMENT, CO 80132

7124202193
CARLSEN JAMES RICHARD
1047 WALTERS PT
MONUMENT, CO 80132

7124204115
CARLSON NANCY
17012 BLUE MIST GRV
MONUMENT, CO 80132

7124202210
CASTLEBERRY LACEY
940 BURNING BUSH PT
MONUMENT, CO 80132

7124202176
CHALANDE PIERRE A
1009 BURNING BUSH PH
MONUMENT, CO 80132

7124204114
CHAU WAIFU
17008 BLUE MIST GRV
MONUMENT, CO 80132

7124202189
CHEN ZHU
996 BURNING BUSH PT
MONUMENT, CO 80132

7123103006
COLEMAN BRAD A
17235 LEGGINS WAY
MONUMENT, CO 80132

7124203015
COSH DOUGLAS G
17310 CLOVERLEAF RD
MONUMENT, CO 80132

7124202049
COUNTRY RIDGE ESTATES RENTALS
LLC
100 FILLMORE ST 5TH FLOOR
DENVER, CO 80206

7124204136
COX DARREN
15714 BLUE PEARL CT
MONUMENT, CO 80132

7124204003
CROSS JACQUELYN K
17285 CLOVERLEAF RD
MONUMENT, CO 80132

7124204117
DEMARCO ANTHONY ALLAN
17020 BLUE MIST GRV
MONUMENT, CO 80132

7124202170
DITTMER STEVAN W
1017 BURNING BUSH PT
MONUMENT, CO 80132

7124202068
DUFFY PAMELA S
1278 TIMBER RUN HTS
MONUMENT, CO 80132

7124202085
DURINGER VALERIE
4975 CHIPPEWA DR
LARKSPUR, CO 80118

7124202056
ELLIS MERRILEE
1352 WALTERS PT
MONUMENT, CO 80132

7124202208
FAMIGLIETTI DAVID G
17010 CROSS TIMBERS GRV
MONUMENT, CO 80132

7124202075
FLINK ARI J
6558 JEREMIE CT
SAN JOSE, CA 95120

7124202042
FOLEY JOHN WILLIAM
2060 SILKWOOD DR
COLORADO SPRINGS, CO 80920

7124202023
FREETON HOLDING LLC
834-F S PERRY ST #336
CASTLE ROCK, CO 80104

7124202213
FRIEDERICKS DIANE JOY
928 BURNING BUSH PT
MONUMENT, CO 80132

7124204037
GIBSON TODD J
3780 HIGHVIEW DR
COLORADO SPRINGS, CO 80908

7124202063
GIDEON LANCE
1310 WALTERS PT
MONUMENT, CO 80132

7124202173
GUERRERO ROSALIE M
1029 BURNING BUSH PT
MONUMENT, CO 80132

7124202022
HARNES WENDY S
1120 MAGIC LAMP WAY UNIT 6
MONUMENT, CO 80132

7123103002
HARVEY ROBERT C
17325 LEGGINS WAY
MONUMENT, CO 80132

7124202025
HAU LIHN NGOC
790 WINDING HILLS RD
MONUMENT, CO 80132

7124202192
HERNANDO & JEANNETTE HERNANDEZ
1053 WALTERS PT
MONUMENT, CO 80132

7124202180
HESS AMANDA K
1052 WALTERS PT
MONUMENT, CO 80132

7123103005
HOLLINGSWORTH BRIAN K
17245 LEGGINS WAY
MONUMENT, CO 80132

7124202046
IOZZI DOLORES E
1030 MAGIC LAMP WAY UNIT 5C
MONUMENT, CO 80132

7124203017
JOHNSON MILTON S
19725 SOARING WING DR
COLORADO SPRINGS, CO 80908

7124202211
JONES KATHRYN ANN TRUST
8653 W MELINDA LN
PEORIA, AZ 85382

7124202171
JONES TIMOTHY D
1021 BURNING BUSH PT
MONUMENT, CO 80132

7124202077
KENEFFICK JOHN J
1224 TIMBER RUN HTS
MONUMENT, CO 80132

7124203011
KING CORY DEAN
17320 CLOVERLEAF RD
MONUMENT, CO 80132

7124202232
KING JOSEPH E
917 BURNING BUSH PT
MONUMENT, CO 80132

7124202019
KIRBY STEVEN C
1120 MAGIC LAMP WAY APT A
MONUMENT, CO 80132

7124202083
KUPFER MARGARET J
1273 TIMBER RUN HTS
MONUMENT, CO 80132

7124204036
LAANSMA JAN E
17167 BLUE MIST GRV
MONUMENT, CO 80132

7124202061
LANG ARIANNA L
1322 WALTERS PT
MONUMENT, CO 80132

7124202060
LEGACY INVESTMENTS LLC
405 SAINT MORITZ WAY
MONUMENT, CO 80132

7124202206
LINDSTROM IMA R
17018 CROSS TIMBERS GRV
MONUMENT, CO 80132

7124204113
LITRELL GLENN L SR
17004 BLUE MIST GRV
MONUMENT, CO 80132

7124202043
MAESTAS LINDA B
1050 MAGIC LAMP WAY UNIT D
MONUMENT, CO 80132

7124202230
MAHDER MITCHELL
909 BURNING BUSH PT
MONUMENT, CO 80132

7124202027
MAY MICHAEL
9585 MOHAWK TRAIL
CASCADE, CO 80809

7124202028
MOONSTONE ENTERPRISES LLC
13849 RIVERCREST CIR
COLORADO SPRINGS, CO 80921

7124202179
MORENO DOLORES KYLE
1058 WALTERS PT
MONUMENT, CO 80132

7124202040
MORRELL MARY
1050 MAGIC LAMP WAY UNIT E
MONUMENT, CO 80132

7124202086
MURRAY ALAN
9323 PRAIRIE DUNES RD
PEYTON, CO 80831

7124202066
NAJDZION MATTHEW D
1290 TIMBER RUN HTS
MONUMENT, CO 80132

7124202006
NASH PETER B
17380 LEGGINS WAY
MONUMENT, CO 80132

7124202064
NEDBALSKI ASHLEY E
1304 WALTERS PT
MONUMENT, CO 80132

7124202047
NELSON SPENCER T
1030 MAGIC LAMP WAY UNIT 5D
MONUMENT, CO 80132

7124202057
NOLT ALAINE K
1346 WALTERS PT
MONUMENT, CO 80132

7124202026
OLSON ANNETTE T
430 HARNESS WAY
MONUMENT, CO 80132

7124204134
PALMER ONE LLC
23 COMMERCE ST
COLORADO SPRINGS, CO 80907

7124202194
PERKIN VALERIE L
1041 WALTERS PT
MONUMENT, CO 80132

7124202174
PLEASANT PROPERTIES LLC
3303 SW 77TH ST
LINCOLN, NE 68532

7124202242
PT CLOVERLEAF LLC
1836 WOODMOOR DR STE 100
MONUMENT, CO 80132

7124202076
RAYNER JAMES R
5930 THURBER DR
COLORADO SPRINGS, CO 80924

7124202175
RCKDJ VENTURES LLC
16680 CURLED OAK DR
MONUMENT, CO 80132

7124202024
REED DAVID B
1120 MAGIC LAMP WAY UNIT 4
MONUMENT, CO 80132

7124202070
REYNA MIGUEL JR
1266 TIMBER RUN HTS
MONUMENT, CO 80132

7124202059
ROUNTREE THOMAS
1334 WALTERS PT
MONUMENT, CO 80132

7124202048
SEARLE STANLEY M
1030 MAGIC LAMP WAY UNIT 5E
MONUMENT, CO 80132

7124202183
SIDNEY MANAGEMENT LLC
1286 KENASHA DR
LARKSPUR, CO 80118

7124202007
SINK KEVIN H JR
17375 LEGGINS WAY
MONUMENT, CO 80132

7124202205
SMITH MARIETTA S
17022 CROSS TIMBERS GRV
MONUMENT, CO 80132

7124202069
SOWLES REVOCABLE LIVING TRUST
42335 WASHINGTON ST STE F
PALM DESERT, CA 92211

7124202172
STEFFEL AMY MICHELLE
1025 BURNING BUSH PT
MONUMENT, CO 80132

7124202182
STUMPF JEFFREY M
1040 WALTERS PT
MONUMENT, CO 80132

7124202078
TALBOTT MARTHA A
1218 TIMBER RUN HTS
MONUMENT, CO 80132

7124204116
TATE GREGORY TRUST
1497 WISHING WELL VW
MONUMENT, CO 80132

7123103008
TAYLOR CAMERON W
17205 LEGGINS WAY
MONUMENT, CO 80132

7124202029
TEBAULT DEBORAH ROSE
17150 PARK TRAIL DR
MONUMENT, CO 80132

7124202062
THEKEN NANCY
9439 BANDLEY DR
FOUNTAIN, CO 80817

7124203016
TMH LIVING TRUST
17290 CLOVERLEAF RD
MONUMENT, CO 80132

7124202084
VOGA ROGER
1261 TIMBER RUN HTS
MONUMENT, CO 80132

7124202041
VON SEGGERN YOMBA A
834-F S PERRY ST PMB 336
CASTLE ROCK, CO 80104

7124202065
WAY DANIEL C
1296 TIMBER RUN HEIGHTS
MONUMENT, CO 80132

7124202207
WHELAN RICHARD W
4954 MUSHROOM ROCK CT
COLORADO SPRINGS, CO 80924

7124202058
WHITSON KATHRYN L
1340 WALTERS PT
MONUMENT, CO 80132

7124202234
WOODMOOR PARK HOMEOWNERS
1975 RESEARCH PKWY STE 320
COLORADO SPRINGS, CO 80920

7124202235
WOODMOOR PARK HOMEOWNERS
4325 N NEVADA AVE #100
COLORADO SPRINGS, CO 80907

7124204149
WOODMOOR PARK HOMEOWNERS
ASSN INC
10 N MEADE AVE
COLORADO SPRINGS, CO 80909

7124202241
WOSC LLC
902 CARIBOU DR W
MONUMENT, CO 80132

7124204029
WOSC LLC
902 CARIBOU DR W
MONUMENT, CO 80132

7123102049
WOSC LLC
902 CARIBOU DR W
MONUMENT, CO 80132

7124202038
ZAHL BRENDAN
17310 COLONIAL PARK
MONUMENT, CO 80132

7124202088
CARI RE PROPERTY 2 LLC
4865 HIDDEN ROCK RD
COLORADO SPRINGS, CO 80908

7124202044
1030 MAGIC LAMP WAY UNIT 5A LLC
1030 MAGIC LAMP WAY UNIT 5A
COLORADO SPRINGS, CO 80903

7124202087
1243 TIMBER RUN LAND TRUST
545 3RD ST #2302
MONUMENT, CO 80132

7124202067
1284 TIMBER RUN HEIGHTS
545 3RD ST # 2302
MONUMENT, CO 80132

7124202195
2002 MUNCEY FAMILY TRUST
1918 DIAMOND CREEK
COLORADO SPRINGS, CO 80921

7123103001
BRG 2013 LLC
9741 ABINGTON CT
FAIRFAX, VA 22032