

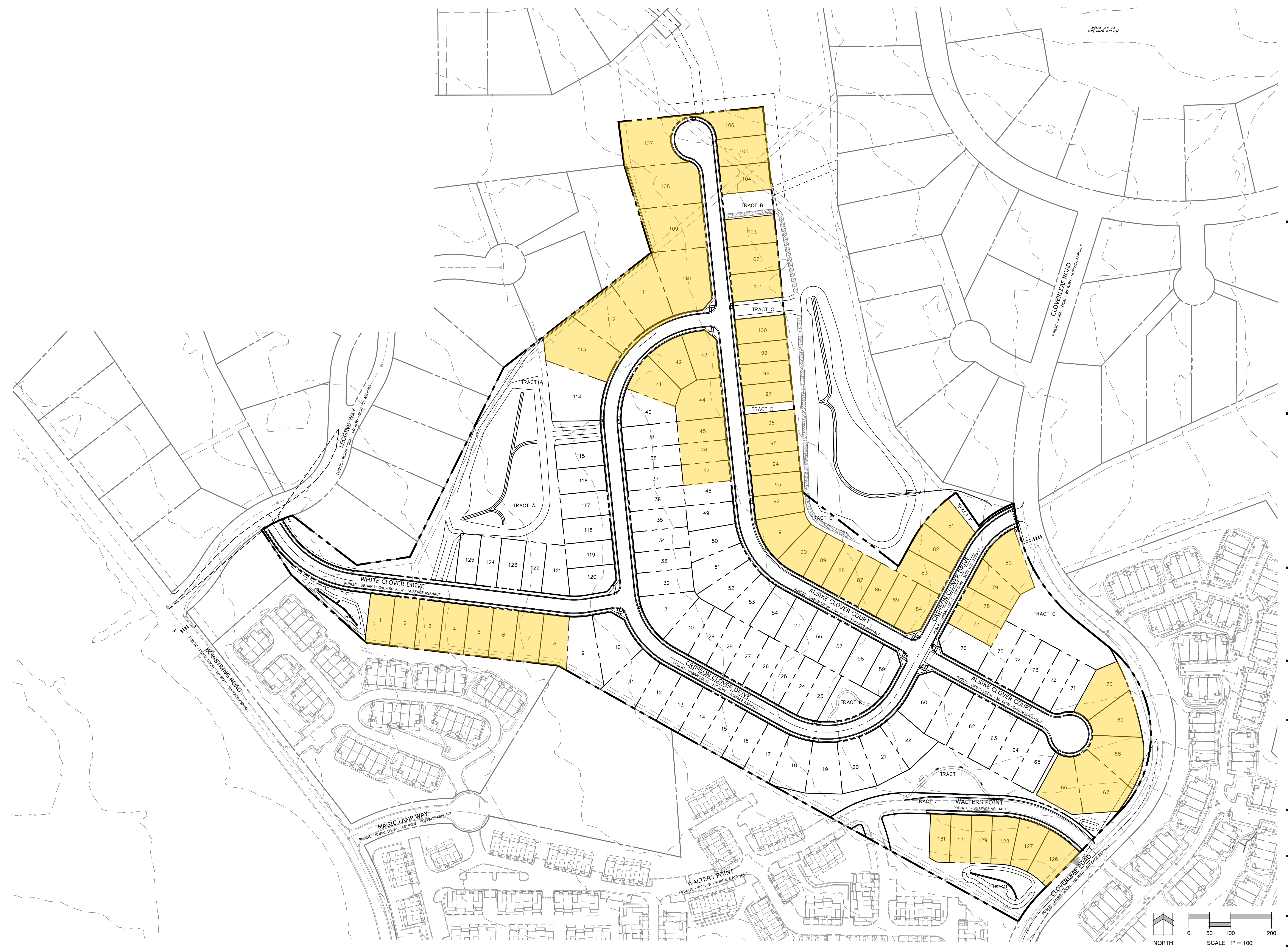
CLOVERLEAF SUBDIVISION

CLOVERLEAF ROAD
EL PASO COUNTY,
COLORADO

DATE: 9/10/2021
PROJECT MGR: A. BARLOW
PREPARED BY: B. SWENSON

DATE: BY: DESCRIPTION:

ADMINISTRATIVE RELIEF LOTS



P:\190 Terra Walters Property Drawings\Planning\Preliminary Plan\Cloverleaf_Plan_2_Plan.dwg [Simplified] 9/10/2021 4:56:44 PM bswenson

PLANNER / LANDSCAPE ARCHITECT
IN ASSOCIATION WITH
SCALE
ISSUE INFO
SHEET NUMBER