



Community Development Department
International Circle, Suite 110
Colorado Springs, CO 80910

DENVER CO 802

7 OCT 2021 PM 5:41

FIRST-CLASS



PITNEY BOWES
US POSTAGE
02 7H \$ 000.53⁰
0001332609 OCT 06 2021
MAILED FROM ZIP CODE 80910

7124202022
HARNES WENDY S
1120 MAGIC LAMP WAY UNIT 6
MONUMENT, CO 80132

NTXTE 888 DF 1 0010/16/21

RETURN TO SENDER
INSUFFICIENT ADDRESS
UNABLE TO FORWARD

80132-8888-1A
80910>8107

BC: 80910610799 *1720-00756-07-46



www.pitneybowes.com

EL PASO COUNTY
COLORADO

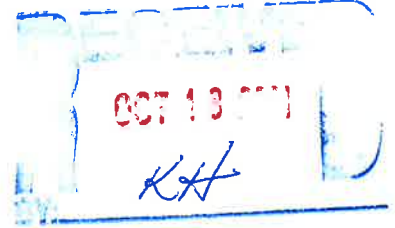
COMMISSIONERS:
STAN VANDERWERF (CHAIR)
CAMI BREMER (VICE-CHAIR)

LONGINOS GONZALEZ, JR.
HOLLY WILLIAMS
CARRIE GEITNER

PLANNING AND COMMUNITY DEVELOPMENT DEPARTMENT
CRAIG DOSSEY, EXECUTIVE DIRECTOR

10/6/2021

RE: Cloverleaf Filing No. 2 – Administrative Relief



File: ADR2110

Parcel ID Nos.: 71231-03-007, 71242-02-236, 71242-02-239, and 71242-02-242

To Whom It May Concern:

This letter is to inform property owners adjacent to Cloverleaf Filing No. 2 Subdivision that the applicant, PT Cloverleaf LLC, has requested approval of an application for administrative relief to administrative relief for lot coverage.

The Planning and Community Development Department Director may make a formal decision regarding the administrative relief application on 10/21/2021. Any comments or questions may be forwarded to me prior to that decision. Administrative approval by the Planning and Community Development Department Director is subject to the appeal provisions of the Land Development Code.

You may view the application documents online at www.epcdevplanreview.com. Please feel free to contact me with any questions, comments, or concerns you may have prior to the decision.

Respectfully,

Nina Ruiz, Planning Manager
El Paso County Planning and Community Development
719-520-6313
NinaRuiz@elpasoco.com

2880 INTERNATIONAL CIRCLE, SUITE 110
PHONE: (719) 520-6300



COLORADO SPRINGS, CO 80910-3127
FAX: (719) 520-6695

www.ELPASOCO.COM

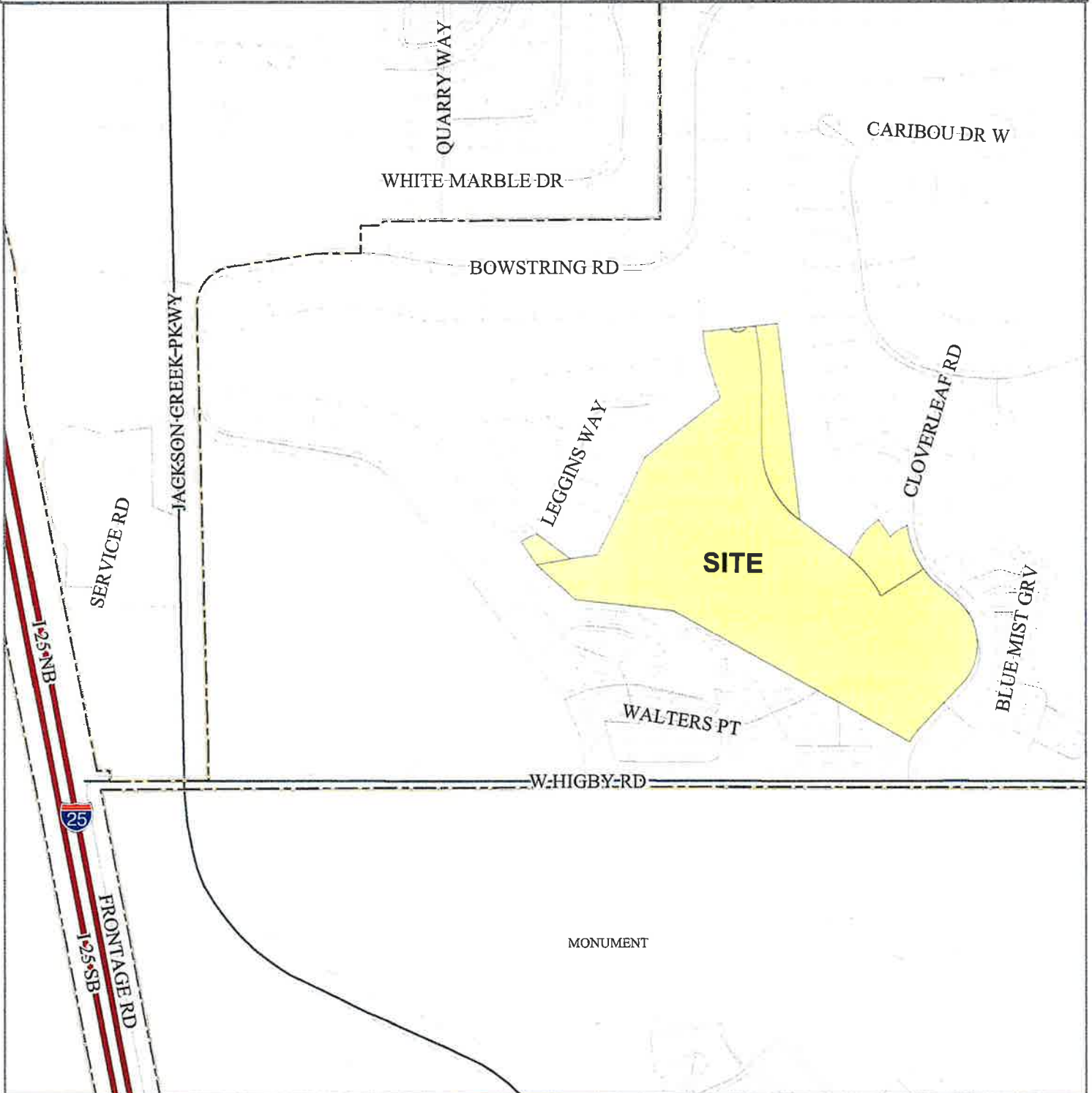
El Paso County Parcel Information

PA
712
712
712
712

File Name:

Zone Map No.

Date:



Please report any parcel discrepancies to:
El Paso County Assessor
1675 W. Garden of the Gods Rd.
Colorado Springs, CO 80907
(719) 520-6600



COPYRIGHT 2018 by the Board of County Commissioners, El Paso County, Colorado. All rights reserved. No part of this document or data contained hereon may be reproduced, used to prepare derivative products, or distributed without the specific written approval of the Board of County Commissioners, El Paso County, Colorado. This document was prepared from the best data available at the time of printing. El Paso County, Colorado, makes no claim as to the completeness or accuracy of the data contained hereon.