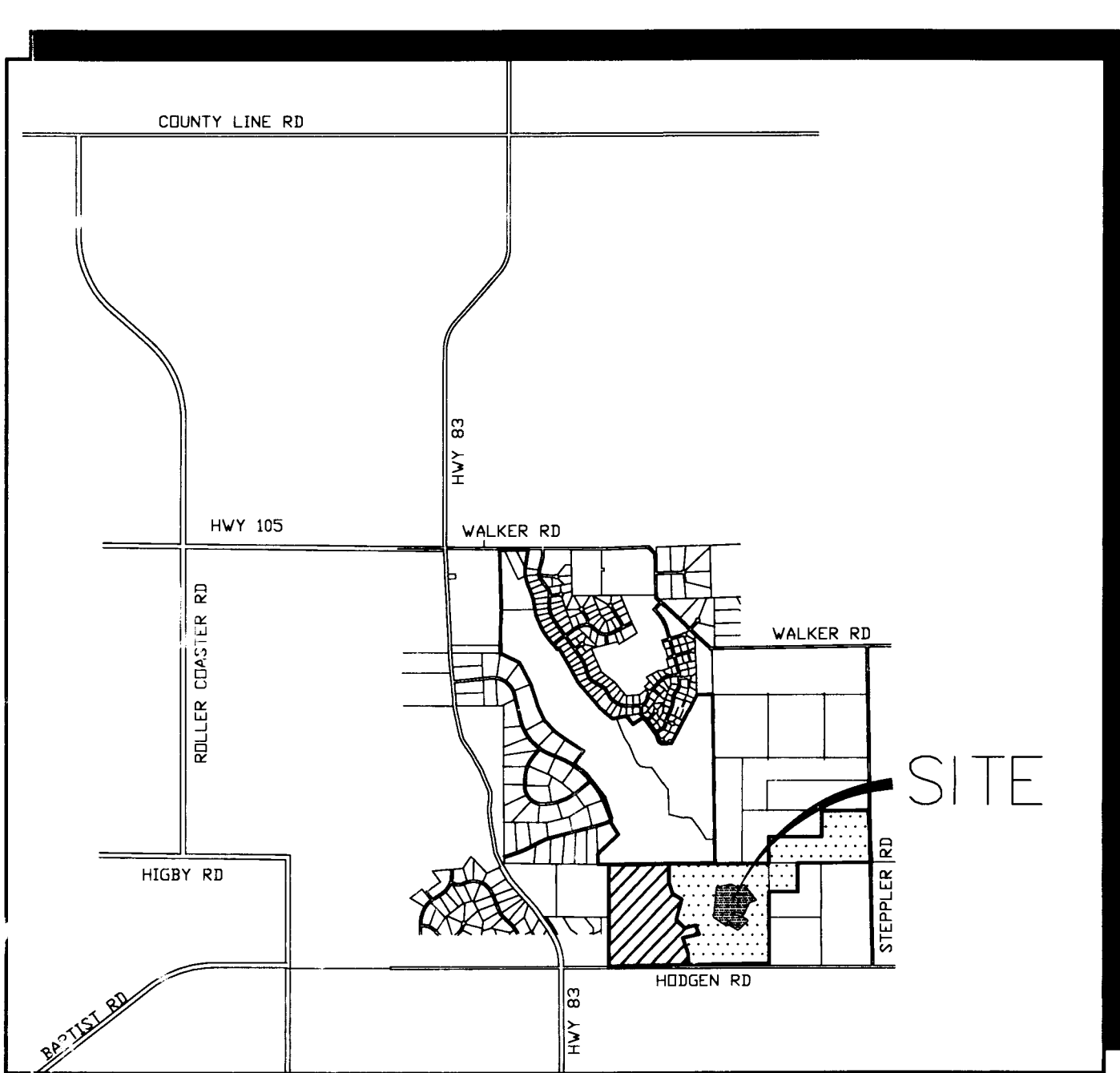
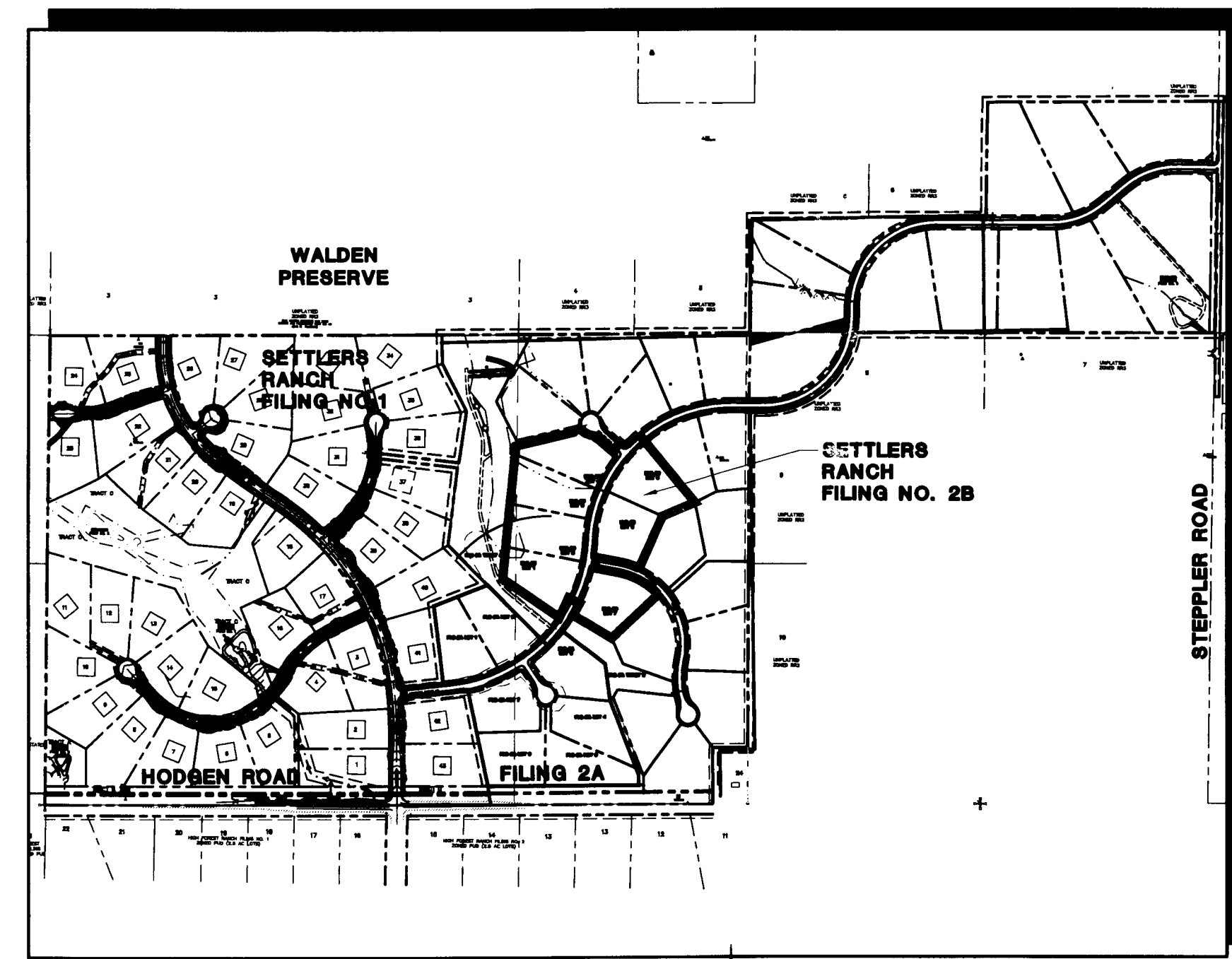


CALL UTILITY NOTIFICATION  
CENTER OF COLORADO  
1-800-922-1987  
CALL 2-BUSINESS DAYS IN ADVANCE  
BEFORE YOU DIG, GRADE, OR EXCAVATE  
FOR THE MARKING OF UNDERGROUND  
MEMBER UTILITIES.



VICINITY MAP  
NOT TO SCALE



SITE MAP  
NOT TO SCALE

# SETTLERS RANCH

## Filing No. 2B

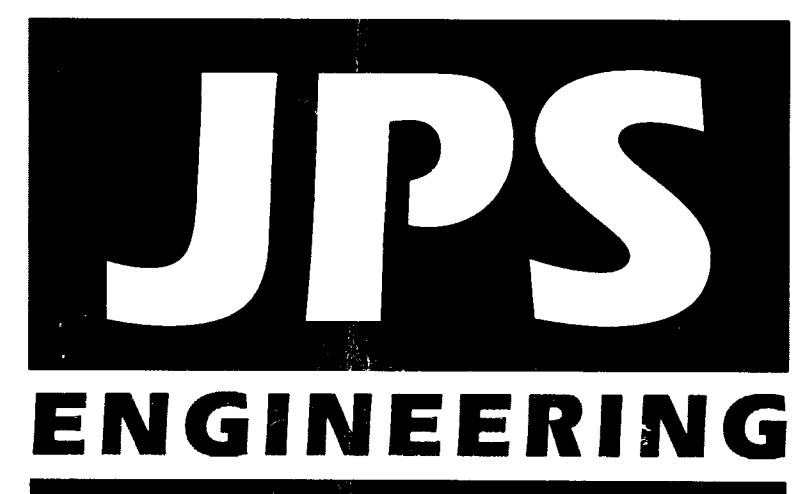
### Construction Drawings

#### El Paso County, Colorado

PREPARED FOR:

Hodgen Settlers Ranch, LLC  
P.O. Box 1488  
Monument, CO 80132

PREPARED BY:



19 East Willamette Avenue  
Colorado Springs, Colorado 80903  
FEBRUARY, 2016

#### SHEET INDEX

G1B	TITLE SHEET/VICINITY MAP/LOCATION MAP
PH1B	PHASING PLAN
C1B	OVERALL SITE PLAN & GENERAL NOTES
C1.01B	MASTER GRADING PLAN/SHEET INDEX & SIGNING PLAN
C1.02B	EROSION CONTROL NOTES & DETAILS
C1.11B	GRADING & EROSION CONTROL PLAN
C1.12B	GRADING & EROSION CONTROL PLAN
C2.01B	DETENTION POND #4 PLAN & DETAILS
TY1B	TYPICAL SECTIONS & DETAILS
PP1B	SETTLERS RANCH RD. PLAN & PROFILE
PP2B	SETTLERS RANCH RD. PLAN & PROFILE
SD1B	CULVERT PROFILES

#### ENGINEER:

##### DESIGN ENGINEER'S STATEMENT:

THESE DETAILED PLANS AND SPECIFICATIONS WERE PREPARED UNDER MY DIRECTION AND SUPERVISION. SAID PLANS AND SPECIFICATIONS HAVE BEEN PREPARED ACCORDING TO THE CRITERIA ESTABLISHED BY THE COUNTY FOR DETAILED ROADWAY, DRAINAGE, GRADING AND EROSION CONTROL PLANS AND SPECIFICATIONS, AND SAID PLANS AND SPECIFICATIONS ARE IN CONFORMITY WITH APPLICABLE MASTER DRAINAGE PLANS AND MASTER TRANSPORTATION PLANS. SAID PLANS AND SPECIFICATIONS MEET THE PURPOSES FOR WHICH THE PARTICULAR ROADWAY AND DRAINAGE FACILITIES ARE DESIGNED AND ARE CORRECT TO THE BEST OF MY KNOWLEDGE AND BELIEF. I ACCEPT RESPONSIBILITY FOR LIABILITY CAUSED BY MY ACTS, ERRORS OR OMISSIONS ON MY PART IN PREPARATION OF THESE DETAILED PLANS AND SPECIFICATIONS.

JOHN P. SCHWAB, P.E. #29891

DATE

##### OWNER/DEVELOPER'S STATEMENT:

I, THE OWNER/DEVELOPER HAVE READ AND WILL COMPLY WITH ALL OF THE REQUIREMENTS SPECIFIED IN THESE DETAILED PLANS AND SPECIFICATIONS.

HODGEN SETTLERS RANCH, LLC  
P.O. BOX 1488  
MONUMENT, COLORADO 80132

DATE

##### EL PASO COUNTY:

COUNTY PLAN REVIEW IS PROVIDED ONLY FOR GENERAL CONFORMANCE WITH COUNTY DESIGN CRITERIA. THE COUNTY IS NOT RESPONSIBLE FOR THE ACCURACY AND ADEQUACY OF THE DESIGN, DIMENSIONS, AND/OR ELEVATIONS WHICH SHALL BE CONFIRMED AT THE JOB SITE. THE COUNTY THROUGH THE APPROVAL OF THIS DOCUMENT ASSUMES NO RESPONSIBILITY FOR COMPLETENESS AND/OR ACCURACY OF THIS DOCUMENT.

FILED IN ACCORDANCE WITH THE REQUIREMENTS OF THE EL PASO COUNTY LAND DEVELOPMENT CODE, DRAINAGE CRITERIA MANUAL, AND ENGINEERING CRITERIA MANUAL AS AMENDED.

ANDRE P. BRACKIN, P.E.,  
COUNTY ENGINEER / ECM ADMINISTRATOR

DATE

#### AGENCIES/CONTACTS

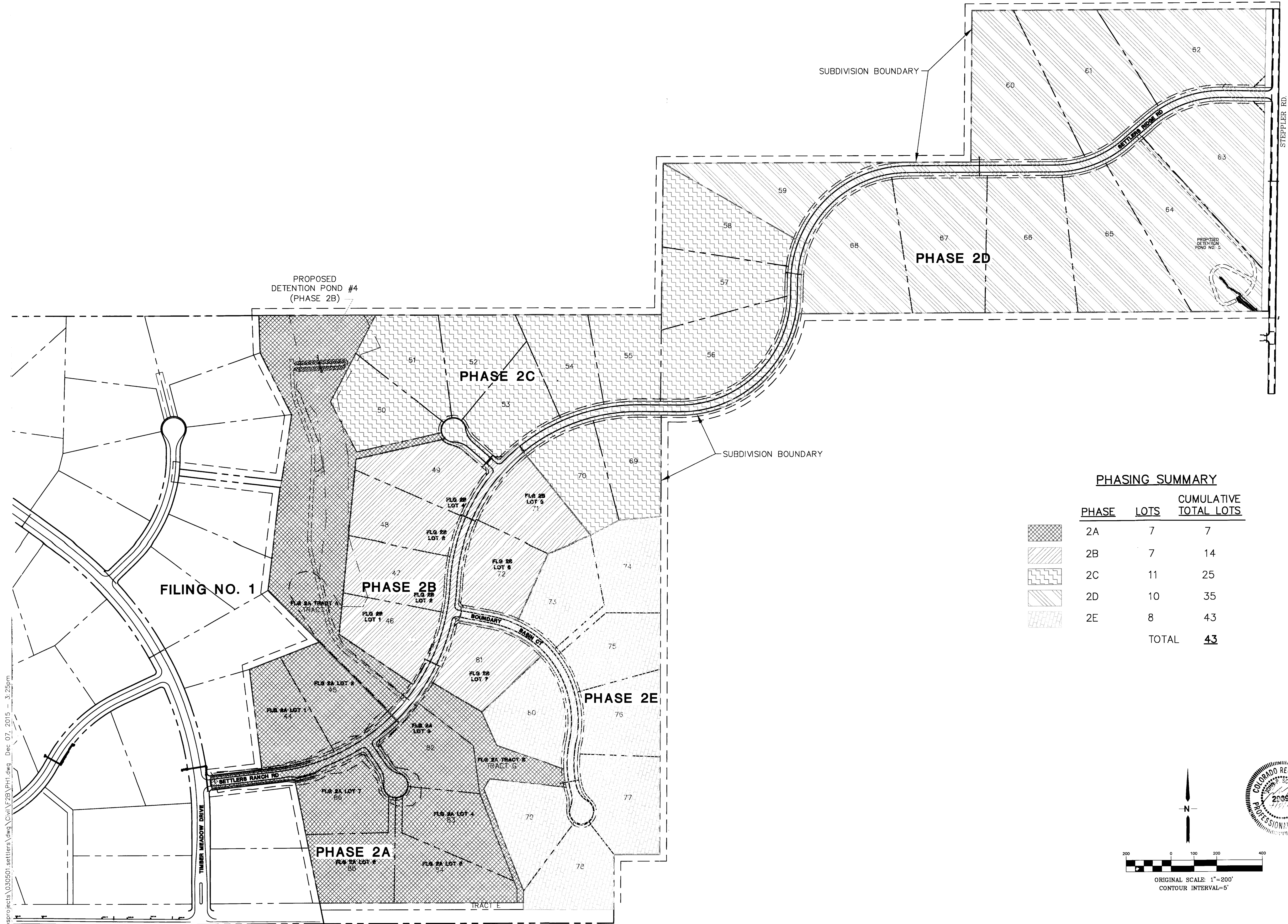
DEVELOPER:	HODGEN SETTLERS RANCH, LLC P.O. BOX 1488 MONUMENT, CO 80132 MR. MARK DAVIS (719)481-9435	GAS DEPARTMENT:	BLACK HILLS ENERGY MS. CHERYL PETERSON (719)393-6625
CIVIL ENGINEER:	JPS ENGINEERING, INC. 19 E. WILLAMETTE AVENUE COLORADO SPRINGS, CO 80903 MR. JOHN P. SCHWAB, P.E. (719)477-9429	ELECTRIC DEPARTMENT:	MOUNTAIN VIEW ELECTRIC ASSOCIATION 11140 E. WOODMEN ROAD COLORADO SPRINGS, CO 80908 MR. DAVE WALDNER (719)495-2283
LOCAL ROADS & DRAINAGE	EL PASO COUNTY DSD 2880 INTERNATIONAL CIRCLE COLORADO SPRINGS, CO 80910	TELEPHONE COMPANY:	QWEST COMMUNICATIONS (LOCATORS) (800)922-1987  A.T. & T. (LOCATORS) (719)635-3674
STATE HIGHWAY	COLORADO DEPARTMENT OF TRANSPORTATION REGION 2 905 N. ERIE AVE. PUEBLO, CO 81002 MS. VALERIE SWORD (719)546-5707	FIRE DEPARTMENT:	TRI-LAKES MONUMENT FIRE RESCUE AUTHORITY (719)266-3382

NOTE: NOTWITHSTANDING ANYTHING DEPICTED IN THESE PLANS IN WORDS OR GRAPHIC REPRESENTATION, ALL DESIGN AND CONSTRUCTION RELATED TO ROADS, STORM DRAINAGE AND EROSION CONTROL SHALL CONFORM TO THE STANDARDS AND REQUIREMENTS OF THE MOST RECENT VERSION OF THE RELEVANT ADOPTED EL PASO COUNTY STANDARDS, INCLUDING THE LAND DEVELOPMENT CODE, THE ENGINEERING CRITERIA MANUAL, THE DRAINAGE CRITERIA MANUAL, AND THE DRAINAGE CRITERIA MANUAL VOLUME 2. ANY DEVIATIONS FROM REGULATIONS AND STANDARDS MUST BE REQUESTED AND APPROVED IN WRITING TO BE ACCEPTABLE.

BASIS OF BEARING:  
ALL BEARINGS USED ON THIS PLAT ARE BASED ON AN ASSUMED BEARING OF N90°00'00"E BETWEEN A 3" GALVANIZED STEEL CAP (ILLEGIBLE) AT THE SOUTHWEST CORNER OF SECTION 23, TOWNSHIP 11 SOUTH, RANGE 66 WEST OF THE 6TH P.M.; AND A 3" GALVANIZED STEEL CAP (ILLEGIBLE) AT THE SOUTHEAST CORNER OF SAID SECTION 23.

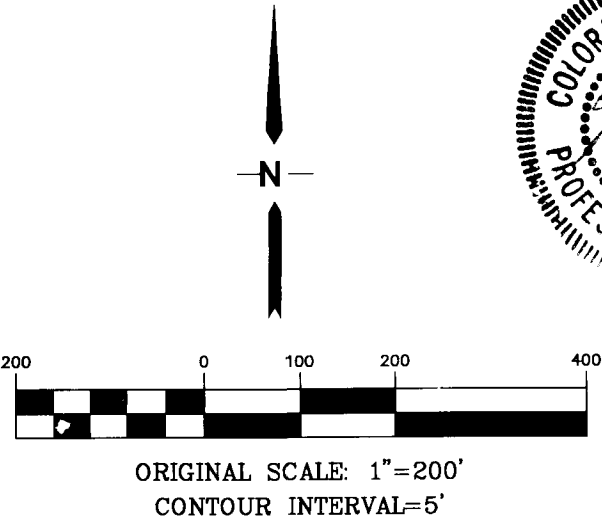
BENCHMARK:  
TEMPORARY BENCHMARK, PANEL POINT #109 FROM AERIAL TOPOGRAPHY SURVEY PROVIDED BY MVE. ELEV.=7577.66 (SEE SHEET C1)





PHASING SUMMARY

PHASE	LOTS	CUMULATIVE TOTAL LOTS
2A	7	7
2B	7	14
2C	11	25
2D	10	35
2E	8	43
TOTAL		43

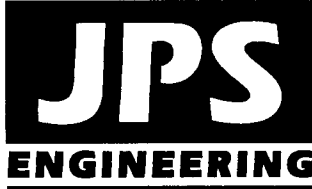


SETTLERS RANCH - FILING NO. 2B

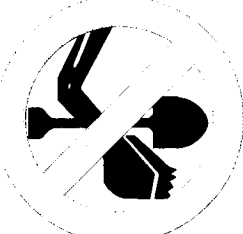
PHASING PLAN

HORIZ. SCALE: 1"=200'	DRAWN: MJP
VERT. SCALE: N/A	DESIGNED: JPS
SURVEYED: RAMPART	CHECKED: JPS
CREATED: 6/18/15	LAST MODIFIED: 9/30/15
PROJECT NO: 030501	MODIFIED BY: BJJ

SHEET: PH1B



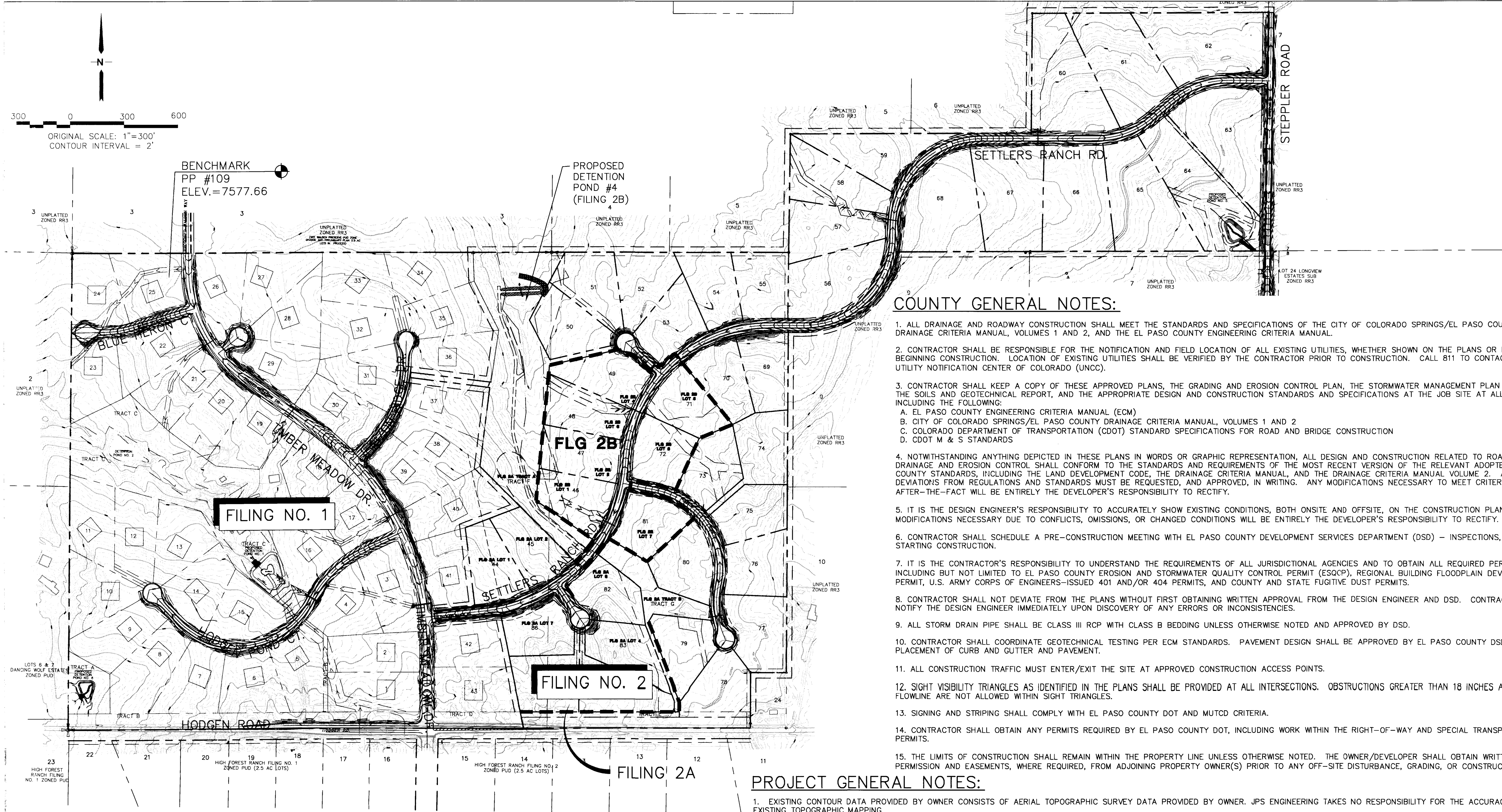
19 E. Willamette Ave.  
Colorado Springs, CO 80903  
PH: 719-477-9429  
FAX: 719-471-0766  
www.jpsengr.com



CALL UTILITY NOTIFICATION  
CENTER OF COLORADO  
1-800-922-1987  
CALL BEFORE YOU DIG  
BEFORE YOU DRILL, GRADE OR EXCAVATE  
FOR THE MARKING OF UNDERGROUND  
MEMBER UTILITIES.

BY	DATE	REVISION
JPS	5/17/13	PHASE 2A PLAT SUBMITTAL
JPS	7/19/13	EL PASO COUNTY COMMENTS
JPS	6/22/15	PH 2B PLAT SUBMITTAL
JPS	9/19/15	EL PASO COUNTY COMMENTS





**LEGEND:**

---	NEW/EXISTING
---	SECTION LINE - NEW/EXISTING
---	EASEMENT LINE - NEW/EXISTING
6230	CONTOUR - NEW/EXISTING
---	PROPERTY LINE - NEW/EXISTING
---	FENCE - NEW/EXISTING
OHE	OVERHEAD ELECTRIC LINE W/ POWER POLE NEW/EXISTING
UGE	UNDERGROUND ELECTRIC LINE NEW/EXISTING
TEL	TELEPHONE - NEW/EXISTING
GAS	GAS - NEW/EXISTING
WT	WATER - NEW/EXISTING

SECTION NUMBER

1 P1

SHEET ON WHICH SECTION IS SHOWN

**DESIGN DATA**

ROAD CLASSIFICATION:	RURAL LOCAL RESIDENTIAL
DESIGN SPEED:	30 MPH
POSTED SPEED:	25 MPH
ROADWAY WIDTH (PAVED):	28' EOA-EOA
MIN. HORIZONTAL RADIUS:	300'
MIN. GRADE:	1.0%
MAX. GRADE:	8.0%
MIN. K-VALUE (CREST):	19
MIN. K-VALUE (SAG):	37

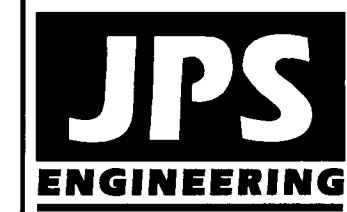
**PROJECT GENERAL NOTES:**

- EXISTING CONTOUR DATA PROVIDED BY OWNER CONSISTS OF AERIAL TOPOGRAPHIC SURVEY DATA PROVIDED BY OWNER. JPS ENGINEERING TAKES NO RESPONSIBILITY FOR THE ACCURACY OF EXISTING TOPOGRAPHIC MAPPING.
- STATIONING IS AT CENTERLINE UNLESS OTHERWISE NOTED. ALL ELEVATIONS ARE AT EDGE OF ASPHALT (EOA) UNLESS OTHERWISE NOTED. ALL DIMENSIONS ARE FROM EDGE OF ASPHALT TO EDGE OF ASPHALT UNLESS OTHERWISE NOTED.
- PROPOSED CONTOURS SHOWN ARE TO FINISHED GRADE.
- LENGTHS SHOWN FOR STORM SEWER PIPES ARE TO CENTER OF MANHOLE.
- CONTRACTOR SHALL REMOVE AND DISPOSE OF ALL EXISTING STRUCTURES, DEBRIS, WASTE AND OTHER UNSUITABLE FILL MATERIAL FOUND WITHIN THE LIMITS OF EXCAVATION.
- MATCH INTO EXISTING GRADES AT 3:1 MAX CUT AND FILL SLOPES.
- REVEGETATION OF ALL DISTURBED AREAS SHALL BE DONE WITH SPECIFIED SEED MIX WITHIN 60 DAYS AFTER FINE GRADING IS COMPLETE.
- EROSION CONTROL SHALL CONSIST OF SILT FENCE AND HAY BALES AS SHOWN ON THE DRAWING, AND TOPSOIL WITH GRASS SEED, WHICH WILL BE WATERED UNTIL VEGETATION HAS BEEN REESTABLISHED.
- THE EROSION CONTROL MEASURES OUTLINED ON THIS PLAN ARE THE RESPONSIBILITY OF THE DEVELOPER TO MONITOR AND REPLACE, REGRADE, AND REBUILD AS NECESSARY UNTIL VEGETATION IS REESTABLISHED.
- EROSION CONTROL MEASURES SHALL BE IMPLEMENTED IN A MANNER THAT WILL PROTECT ADJACENT PROPERTIES AND PUBLIC FACILITIES FROM THE ADVERSE EFFECTS OF EROSION AND SEDIMENTATION AS A RESULT OF CONSTRUCTION AND EARTHWORK ACTIVITIES WITHIN THE PROJECT SITE.
- ADDITIONAL EROSION CONTROL MEASURES MAY BE REQUIRED AS DETERMINED BY SITE CONDITIONS.
- THE CONTRACTOR WILL TAKE THE NECESSARY PRECAUTIONS TO PROTECT EXISTING UTILITIES FROM DAMAGE DUE TO THIS OPERATION. ANY DAMAGE TO THE UTILITIES WILL BE SETTLED BY THE CONTRACTOR'S EXPENSE, AND ANY SERVICE DISRUPTION WILL BE SETTLED BY THE CONTRACTOR.
- ALL BACKFILL, SUB-BASE, AND/OR BASE COURSE MATERIAL SHALL BE COMPACTED PER EL PASO COUNTY AND CDOT STANDARDS AND SPECIFICATIONS.
- ALL FINISHED GRADES SHALL HAVE A MINIMUM 1.0% SLOPE TO PROVIDE POSITIVE DRAINAGE.
- IN CASE OF CONFLICT BETWEEN PROPOSED SLOPES AND PROPOSED SPOT ELEVATIONS, SPOT ELEVATIONS SHALL GOVERN.
- CONTRACTOR SHALL OBTAIN ALL REQUIRED PERMITS PRIOR TO BEGINNING WORK.

**COUNTY GENERAL NOTES:**

- ALL DRAINAGE AND ROADWAY CONSTRUCTION SHALL MEET THE STANDARDS AND SPECIFICATIONS OF THE CITY OF COLORADO SPRINGS/EL PASO COUNTY DRAINAGE CRITERIA MANUAL, VOLUMES 1 AND 2, AND THE EL PASO COUNTY ENGINEERING CRITERIA MANUAL.
- CONTRACTOR SHALL BE RESPONSIBLE FOR THE NOTIFICATION AND FIELD LOCATION OF ALL EXISTING UTILITIES, WHETHER SHOWN ON THE PLANS OR NOT, BEFORE BEGINNING CONSTRUCTION. LOCATION OF EXISTING UTILITIES SHALL BE VERIFIED BY THE CONTRACTOR PRIOR TO CONSTRUCTION. CALL 811 TO CONTACT THE UTILITY NOTIFICATION CENTER OF COLORADO (UNCC).
- CONTRACTOR SHALL KEEP A COPY OF THESE APPROVED PLANS, THE GRADING AND EROSION CONTROL PLAN, THE STORMWATER MANAGEMENT PLAN (SWMP), THE SOILS AND GEOTECHNICAL REPORT, AND THE APPROPRIATE DESIGN AND CONSTRUCTION STANDARDS AND SPECIFICATIONS AT THE JOB SITE AT ALL TIMES, INCLUDING THE FOLLOWING:
  - EL PASO COUNTY ENGINEERING CRITERIA MANUAL (ECM)
  - CITY OF COLORADO SPRINGS/EL PASO COUNTY DRAINAGE CRITERIA MANUAL, VOLUMES 1 AND 2
  - COLORADO DEPARTMENT OF TRANSPORTATION (CDOT) STANDARD SPECIFICATIONS FOR ROAD AND BRIDGE CONSTRUCTION
  - CDOT M & S STANDARDS
- NOTWITHSTANDING ANYTHING DEPICTED IN THESE PLANS IN WORDS OR GRAPHIC REPRESENTATION, ALL DESIGN AND CONSTRUCTION RELATED TO ROADS, STORM DRAINAGE AND EROSION CONTROL SHALL CONFORM TO THE STANDARDS AND REQUIREMENTS OF THE MOST RECENT VERSION OF THE RELEVANT ADOPTED EL PASO COUNTY STANDARDS, INCLUDING THE LAND DEVELOPMENT CODE, THE DRAINAGE CRITERIA MANUAL, AND THE DRAINAGE CRITERIA MANUAL VOLUME 2. ANY DEVIATIONS FROM REGULATIONS AND STANDARDS MUST BE REQUESTED, AND APPROVED, IN WRITING. ANY MODIFICATIONS NECESSARY TO MEET CRITERIA AFTER-THE-FACT WILL BE ENTIRELY THE DEVELOPER'S RESPONSIBILITY TO RECTIFY.
- IT IS THE DESIGN ENGINEER'S RESPONSIBILITY TO ACCURATELY SHOW EXISTING CONDITIONS, BOTH ONSITE AND OFFSITE, ON THE CONSTRUCTION PLANS. ANY MODIFICATIONS NECESSARY DUE TO CONFLICTS, OMISSIONS, OR CHANGED CONDITIONS WILL BE ENTIRELY THE DEVELOPER'S RESPONSIBILITY TO RECTIFY.
- CONTRACTOR SHALL SCHEDULE A PRE-CONSTRUCTION MEETING WITH EL PASO COUNTY DEVELOPMENT SERVICES DEPARTMENT (DSD) - INSPECTIONS, PRIOR TO STARTING CONSTRUCTION.
- IT IS THE CONTRACTOR'S RESPONSIBILITY TO UNDERSTAND THE REQUIREMENTS OF ALL JURISDICTIONAL AGENCIES AND TO OBTAIN ALL REQUIRED PERMITS, INCLUDING BUT NOT LIMITED TO EL PASO COUNTY EROSION AND STORMWATER QUALITY CONTROL PERMIT (ESQCP), REGIONAL BUILDING FLOODPLAIN DEVELOPMENT PERMIT, U.S. ARMY CORPS OF ENGINEERS-ISSUED 401 AND/OR 404 PERMITS, AND COUNTY AND STATE FUGITIVE DUST PERMITS.
- CONTRACTOR SHALL NOT DEVIATE FROM THE PLANS WITHOUT FIRST OBTAINING WRITTEN APPROVAL FROM THE DESIGN ENGINEER AND DSD. CONTRACTOR SHALL NOTIFY THE DESIGN ENGINEER IMMEDIATELY UPON DISCOVERY OF ANY ERRORS OR INCONSISTENCIES.
- ALL STORM DRAIN PIPE SHALL BE CLASS III RCP WITH CLASS B BEDDING UNLESS OTHERWISE NOTED AND APPROVED BY DSD.
- CONTRACTOR SHALL COORDINATE GEOTECHNICAL TESTING PER ECM STANDARDS. PAVEMENT DESIGN SHALL BE APPROVED BY EL PASO COUNTY DSD PRIOR TO PLACEMENT OF CURB AND GUTTER AND PAVEMENT.
- ALL CONSTRUCTION TRAFFIC MUST ENTER/EXIT THE SITE AT APPROVED CONSTRUCTION ACCESS POINTS.
- SIGHT VISIBILITY TRIANGLES AS IDENTIFIED IN THE PLANS SHALL BE PROVIDED AT ALL INTERSECTIONS. OBSTRUCTIONS GREATER THAN 18 INCHES ABOVE FLOWLINE ARE NOT ALLOWED WITHIN SIGHT TRIANGLES.
- SIGNING AND STRIPING SHALL COMPLY WITH EL PASO COUNTY DOT AND MUTCD CRITERIA.
- CONTRACTOR SHALL OBTAIN ANY PERMITS REQUIRED BY EL PASO COUNTY DOT, INCLUDING WORK WITHIN THE RIGHT-OF-WAY AND SPECIAL TRANSPORT PERMITS.
- THE LIMITS OF CONSTRUCTION SHALL REMAIN WITHIN THE PROPERTY LINE UNLESS OTHERWISE NOTED. THE OWNER/DEVELOPER SHALL OBTAIN WRITTEN PERMISSION AND EASEMENTS, WHERE REQUIRED, FROM ADJOINING PROPERTY OWNER(S) PRIOR TO ANY OFF-SITE DISTURBANCE, GRADING, OR CONSTRUCTION.

**SETTLERS RANCH - FILING NO. 2B**



19 E. Willamette Ave.  
Colorado Springs, CO  
80903  
PH: 719-477-9429  
FAX: 719-471-0766  
www.jpsegr.com



CALL UTILITY NOTIFICATION  
CENTER OF COLORADO  
1-800-922-1987  
FOR THE MARKING OF UNDERGROUND  
MEMBER UTILITIES.

BY	DATE
JPS	7/31/07
JPS	5/17/13
JPS	7/19/13
JPS	6/22/15
JPS	9/19/15

**OVERALL SITE PLAN  
& GENERAL NOTES**

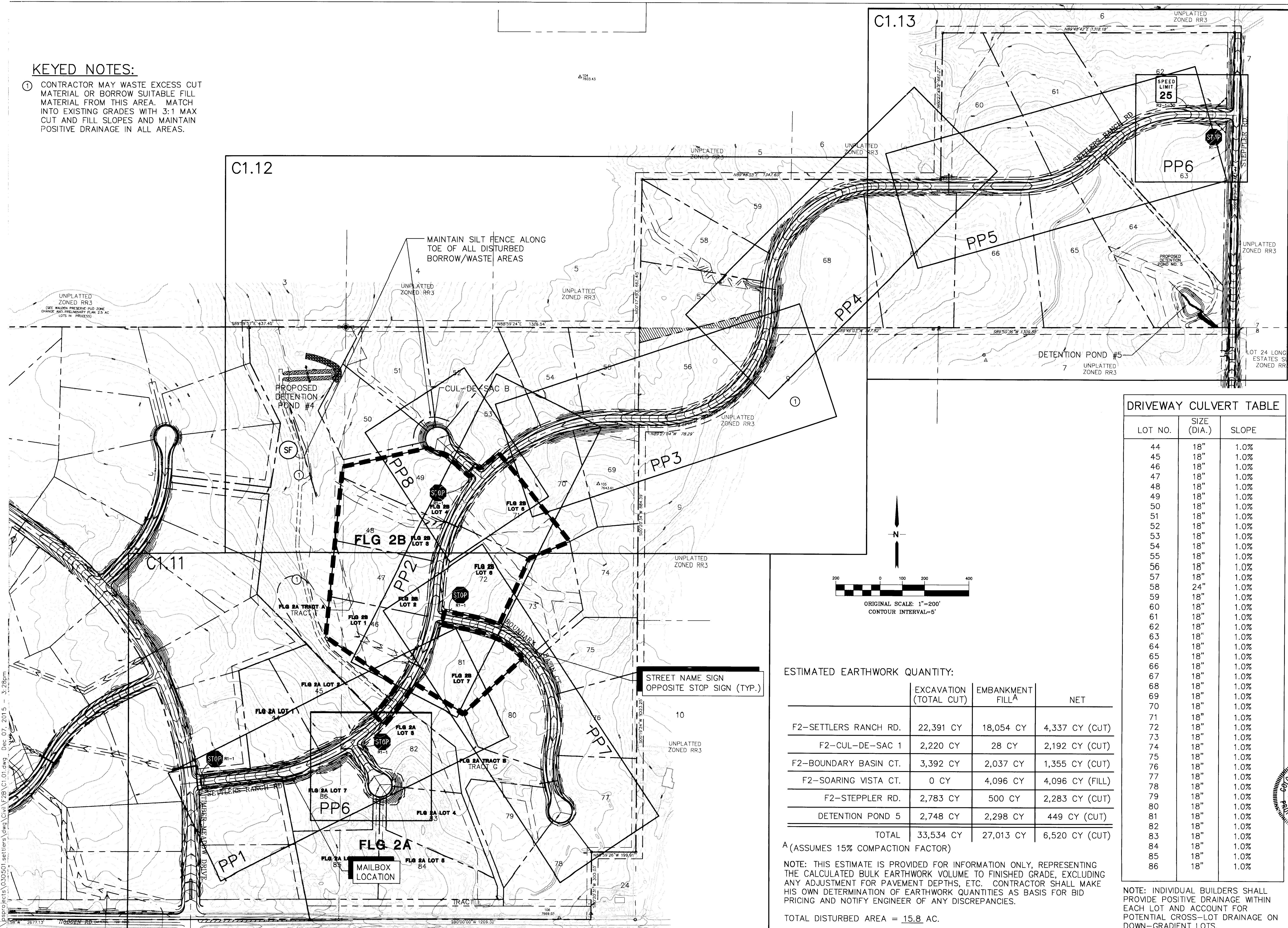
HORZ. SCALE: 1"=500'	DRAWN: MJP
VERT. SCALE: N/A	DESIGNED: JPS
SURVEYED: RAMPART	CHECKED: JPS
CREATED: 6/18/15	LAST MODIFIED: 9/30/15
PROJECT NO: 030501	MODIFIED BY: BJJ

SHEET: **C1B**



KEYED NOTES:

- ① CONTRACTOR MAY WASTE EXCESS CUT MATERIAL OR BORROW SUITABLE FILL MATERIAL FROM THIS AREA. MATCH INTO EXISTING GRADES WITH 3:1 MAX CUT AND FILL SLOPES AND MAINTAIN POSITIVE DRAINAGE IN ALL AREAS.



ESTIMATED EARTHWORK QUANTITY:

	EXCAVATION (TOTAL CUT)	EMBANKMENT FILL <sup>A</sup>	NET
F2-SETTLERS RANCH RD.	22,391 CY	18,054 CY	4,337 CY (CUT)
F2-CUL-DE-SAC 1	2,220 CY	28 CY	2,192 CY (CUT)
F2-BOUNDARY BASIN CT.	3,392 CY	2,037 CY	1,355 CY (CUT)
F2-SOARING VISTA CT.	0 CY	4,096 CY	4,096 CY (FILL)
F2-STEPLER RD.	2,783 CY	500 CY	2,283 CY (CUT)
DETENTION POND 5	2,748 CY	2,298 CY	449 CY (CUT)
TOTAL	33,534 CY	27,013 CY	6,520 CY (CUT)

<sup>A</sup> (ASSUMES 15% COMPACTION FACTOR)

NOTE: THIS ESTIMATE IS PROVIDED FOR INFORMATION ONLY, REPRESENTING THE CALCULATED BULK EARTHWORK VOLUME TO FINISHED GRADE, EXCLUDING ANY ADJUSTMENT FOR PAVEMENT DEPTHS, ETC. CONTRACTOR SHALL MAKE HIS OWN DETERMINATION OF EARTHWORK QUANTITIES AS BASIS FOR BID PRICING AND NOTIFY ENGINEER OF ANY DISCREPANCIES.

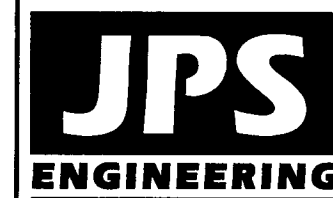
TOTAL DISTURBED AREA = 15.8 AC.

DRIVEWAY CULVERT TABLE

LOT NO.	SIZE (DIA.)	SLOPE
44	18"	1.0%
45	18"	1.0%
46	18"	1.0%
47	18"	1.0%
48	18"	1.0%
49	18"	1.0%
50	18"	1.0%
51	18"	1.0%
52	18"	1.0%
53	18"	1.0%
54	18"	1.0%
55	18"	1.0%
56	18"	1.0%
57	18"	1.0%
58	24"	1.0%
59	18"	1.0%
60	18"	1.0%
61	18"	1.0%
62	18"	1.0%
63	18"	1.0%
64	18"	1.0%
65	18"	1.0%
66	18"	1.0%
67	18"	1.0%
68	18"	1.0%
69	18"	1.0%
70	18"	1.0%
71	18"	1.0%
72	18"	1.0%
73	18"	1.0%
74	18"	1.0%
75	18"	1.0%
76	18"	1.0%
77	18"	1.0%
78	18"	1.0%
79	18"	1.0%
80	18"	1.0%
81	18"	1.0%
82	18"	1.0%
83	18"	1.0%
84	18"	1.0%
85	18"	1.0%
86	18"	1.0%

NOTE: INDIVIDUAL BUILDERS SHALL PROVIDE POSITIVE DRAINAGE WITHIN EACH LOT AND ACCOUNT FOR POTENTIAL CROSS-LOT DRAINAGE ON DOWN-GRADIENT LOTS.

SETTLERS RANCH - FILING NO. 2B



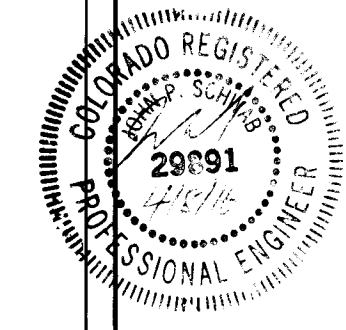
19 E. Willamette Ave.  
Colorado Springs, CO  
80903  
PH: 719-477-9429  
FAX: 719-471-0766  
www.jpsengr.com



CALL UTILITY NOTIFICATION  
CENTER OF COLORADO  
1-800-922-1987  
CALL BEFORE YOU DIG  
BEFORE YOU DIS GRADE, OR EXCAVATE  
FOR THE MARKING OF UNDERGROUND  
MEMBER UTILITIES

BY	DATE	REVISION
JPS	7/31/07	COUNTY COMMENTS
JPS	5/17/13	PHASE 1 PLAT SUBMITTAL
JPS	7/19/13	EPC COMMENTS
JPS	6/25/15	PH 2B PLAT SUBMITTAL
JPS	9/19/15	COUNTY COMMENTS

MASTER GRADING PLAN/  
SHEET INDEX & SIGNING PLAN



HORIZ. SCALE: 1"=200'	DRAWN: MJP
VERT. SCALE: N/A	DESIGNED: JPS
SURVEYED: RAMPART	CHECKED: JPS
CREATED: 6/18/15	LAST MODIFIED: 6/30/15
PROJECT NO: 030501	MODIFIED BY: BJJ

SHEET: C1.01B

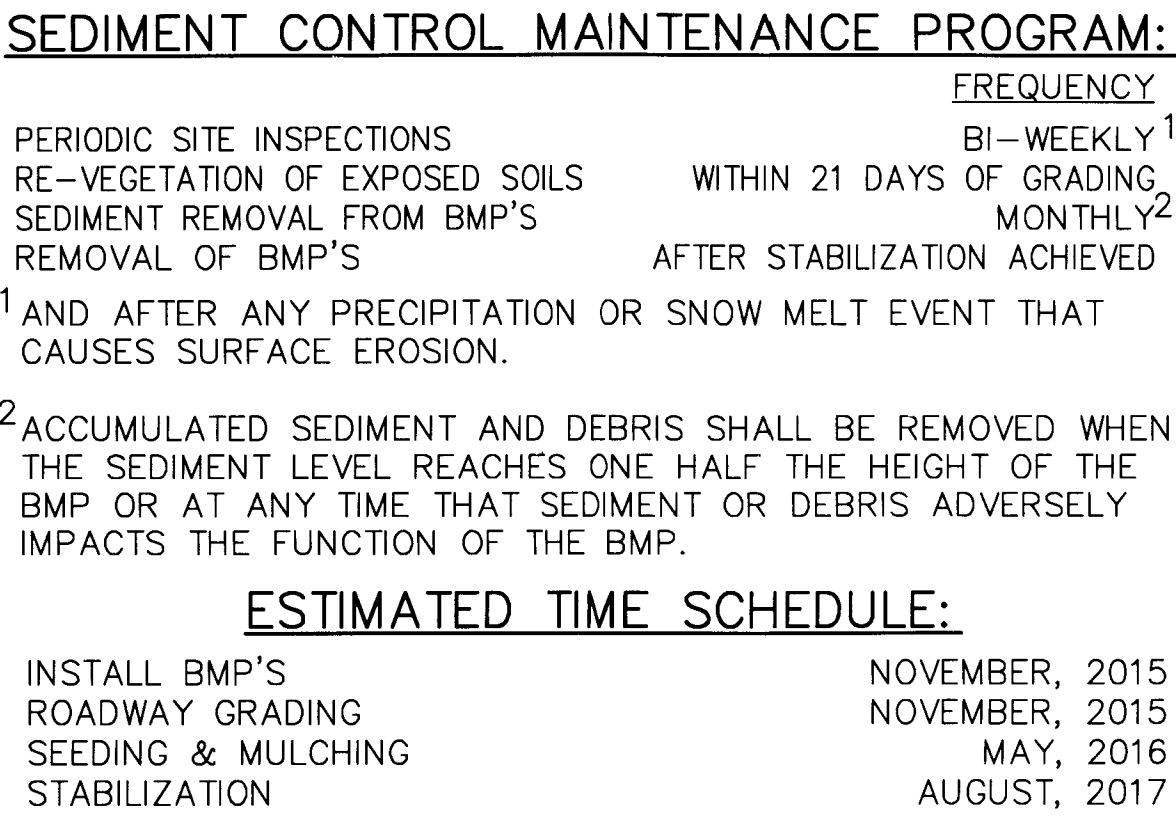
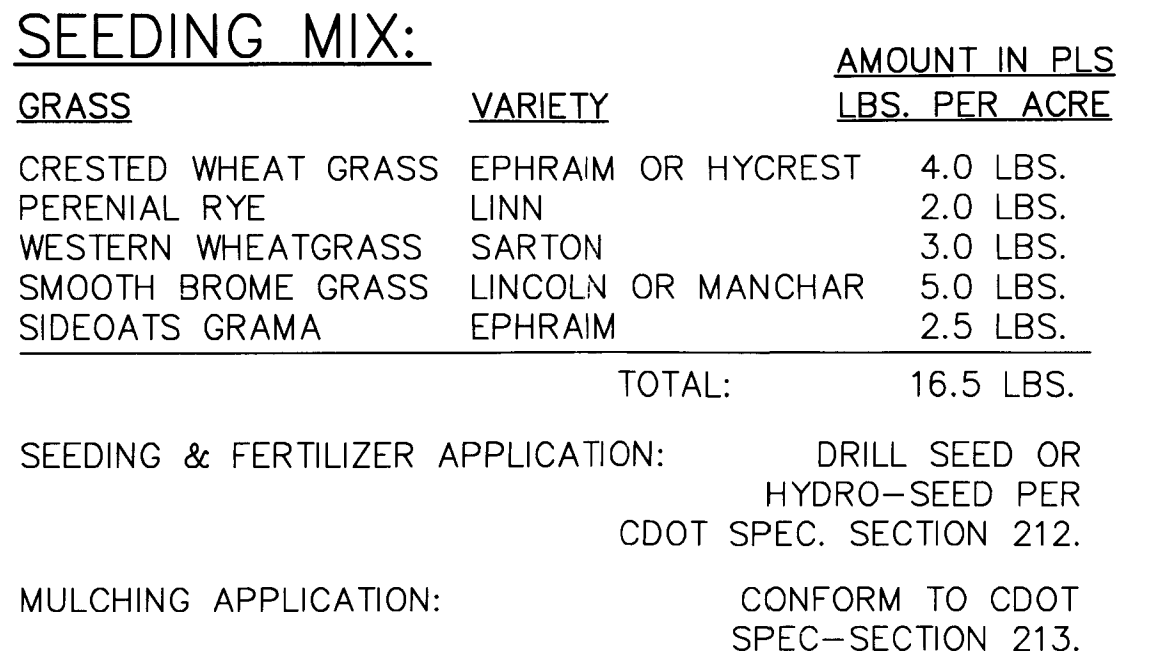
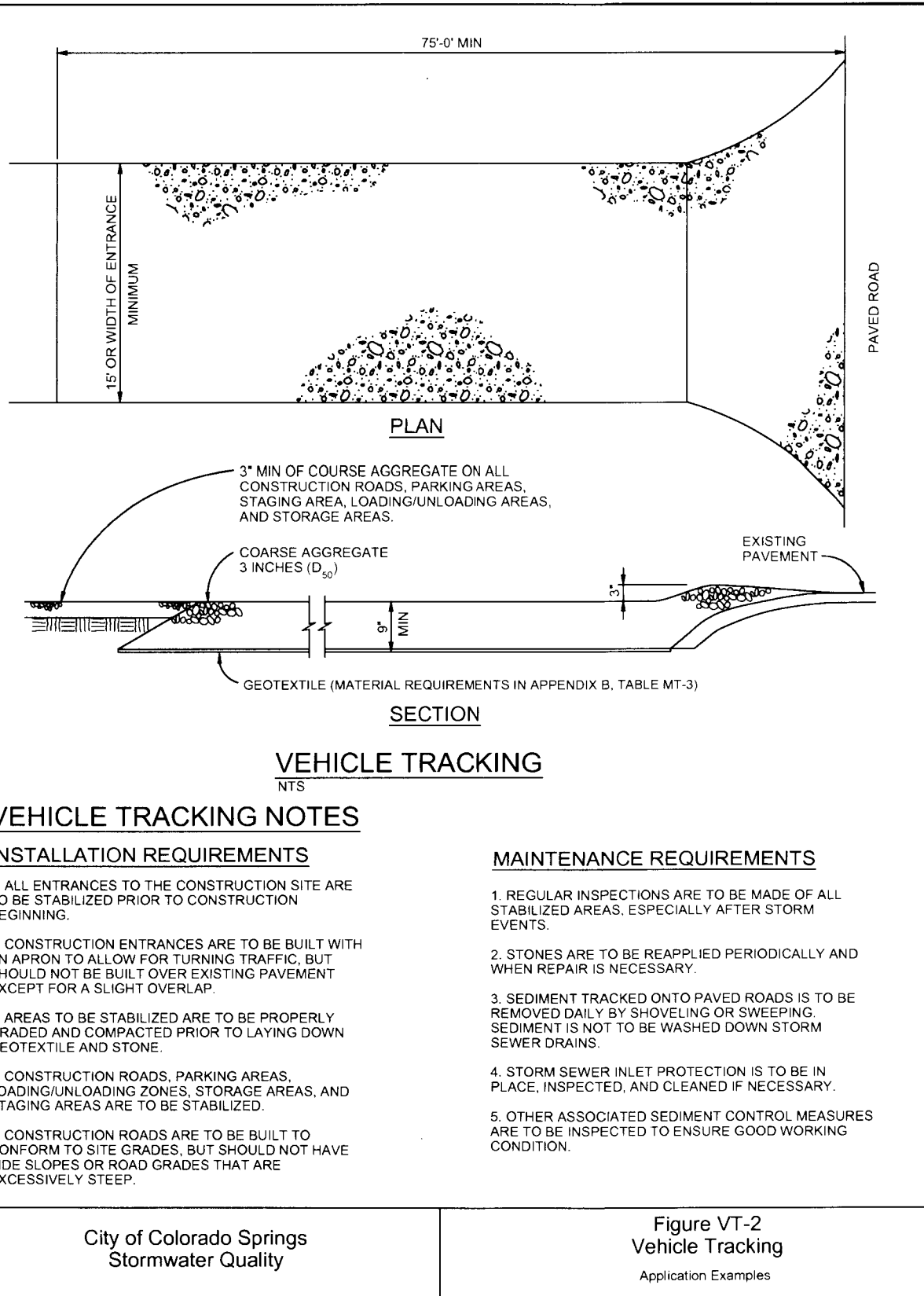
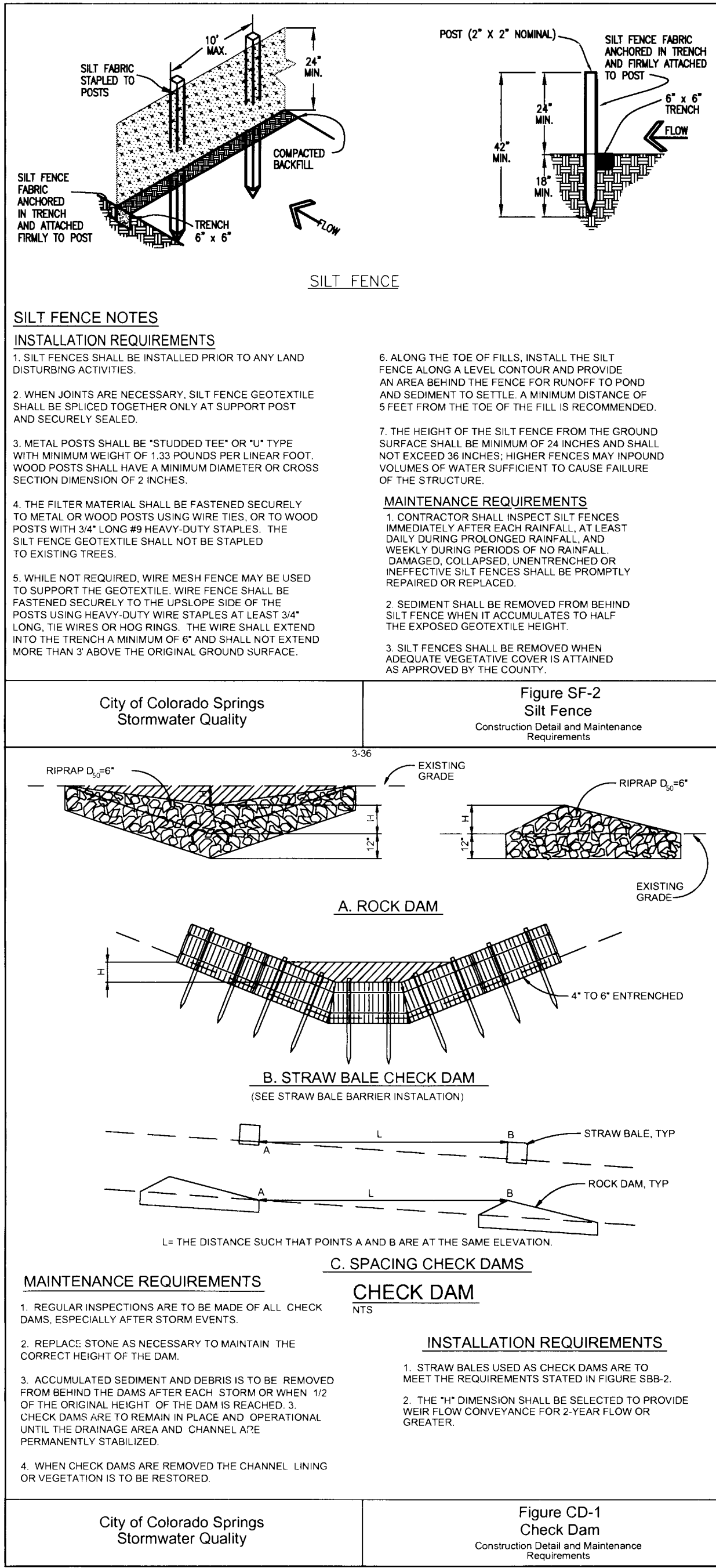


Standard Notes for El Paso County Grading and Erosion Control Plans

Revised 7/07/10

- Construction may not commence until a Construction Permit is obtained from Development Services and a Preconstruction Conference is held with Development Services Inspectors.
- Stormwater discharges from construction sites shall not cause or threaten to cause pollution, contamination, or degradation of State Waters. All work and earth disturbance shall be done in a manner that minimizes pollution of any on-site or off site waters, including wetlands.
- Notwithstanding anything depicted in these plans in words or graphic representation, all design and construction related to roads, storm drainage and erosion control shall conform to the standards and requirements of the most recent version of the relevant adopted El Paso County standards, including the Land Development Code, the Engineering Criteria Manual, the Drainage Criteria Manual, and the Drainage Criteria Manual Volume 2. Any deviations to regulations and standards must be requested, and approved, in writing.
- A separate Stormwater Management Plan (SWMP) for this project shall be completed and an Erosion and Stormwater Quality Control Permit (ESQCP) issued prior to commencing construction. During construction the SWMP is the responsibility of the designated Stormwater Manager, shall be located on site at all times and shall be kept up to date with work progress and changes in the field.
- Once the ESQCP has been issued, the contractor may install the initial stage erosion and sediment control BMPs as indicated on the GEC. A preconstruction meeting between the contractor, engineer, and El Paso County will be held prior to any construction. It is the responsibility of the applicant to coordinate the meeting time and place with County DSD inspections staff.
- Soil erosion control measures for all slopes, channels, ditches, or any disturbed land area shall be completed within 21 calendar days after final grading, or final earth disturbance, has been completed. Disturbed areas and stockpiles which are not at final grade but will remain dormant for longer than 30 days shall also be mulched within 21 days after interim grading. An area that is going to remain in an interim state for more than 60 days shall also be seeded. All temporary soil erosion control measures and BMPs shall be maintained until permanent soil erosion control measures are implemented and established.
- Temporary soil erosion control facilities shall be removed and earth disturbance areas graded and stabilized with permanent soil erosion control measures pursuant to standards and specification prescribed in the DCM Volume II and the Engineering Criteria Manual (ECM) appendix I.
- All persons engaged in earth disturbance shall implement and maintain acceptable soil erosion and sediment control measures including BMPs in conformance with the erosion control technical standards of the Drainage Criteria Manual (DCM) Volume II and in accordance with the Stormwater Management Plan (SWMP).
- All temporary erosion control facilities including BMPs and all permanent facilities intended to control erosion of any earth disturbance operations, shall be installed as defined in the approved plans, the SWMP and the DCM Volume II and maintained throughout the duration of the earth disturbance operation.
- Any earth disturbance shall be conducted in such a manner so as to effectively reduce accelerated soil erosion and resulting sedimentation. All disturbances shall be designed, constructed, and completed so that the exposed area of any disturbed land shall be limited to the shortest practical period of time.
- Any temporary or permanent facility designed and constructed for the conveyance of stormwater around, through, or from the earth disturbance area shall be designed to limit the discharge to a non-erosive velocity.
- Concrete wash water shall be contained and disposed of in accordance with the SWMP. No wash water shall be discharged to or allowed to runoff to State Waters, including any surface or subsurface storm drainage system or facilities.
- Erosion control blanketing is to be used on slopes steeper than 3:1.
- Building, construction, excavation, or other waste materials shall not be temporarily placed or stored in the street, alley, or other public way, unless in accordance with an approved Traffic Control Plan. BMP's may be required by El Paso County Engineering if deemed necessary, based on specific conditions and circumstances.
- Vehicle tracking of soils and construction debris off-site shall be minimized. Materials tracked offsite shall be cleaned up and properly disposed of immediately.
- Contractor shall be responsible for the removal of all wastes from the construction site for disposal in accordance with local and State regulatory requirements. No construction debris, tree slash, building material wastes or unused building materials shall be buried, dumped, or discharged at the site.
- The owner, site developer, contractor, and/or their authorized agents shall be responsible for the removal of all construction debris, dirt, trash, rock, sediment, and sand that may accumulate in the storm sewer or other drainage conveyance system and stormwater appurtenances as a result of site development.
- The quantity of materials stored on the project site shall be limited, as much as practical, to that quantity required to perform the work in an orderly sequence. All materials stored on-site shall be stored in a neat, orderly manner, in their original containers, with original manufacturer's labels.
- No chemicals are to be used by the contractor, which have the potential to be released in stormwater unless permission for the use of a specific chemical is granted in writing by the ECM Administrator. In granting the use of such chemicals, special conditions and monitoring may be required.
- Bulk storage structures for petroleum products and other chemicals shall have adequate protection so as to contain all spills and prevent any spilled material from entering State Waters, including any surface or subsurface storm drainage system or facilities.
- No person shall cause the impediment of stormwater flow in the flow line of the curb and gutter or in the ditchline.
- Individuals shall comply with the "Colorado Water Quality Control Act" (Title 25, Article 8, CRS), and the "Clean Water Act" (33 USC 1344), in addition to the requirements included in the DCM Volume II and the ECM Appendix I. All appropriate permits must be obtained by the contractor prior to construction (NPDES, Floodplain, 404, fugitive dust, etc.). In the event of conflicts between these requirements and laws, rules, or regulations of other Federal, State, or County agencies, the more restrictive laws, rules, or regulations shall apply.
- All construction traffic must enter/exit the site at approved construction access points.
- Prior to actual construction the permittee shall verify the location of existing utilities.
- A water source shall be available on site during earthwork operations and utilized as required to minimize dust from earthwork equipment and wind.
- The preliminary soils report for this site prepared by Himmelreich & Assoc., dated 1/24/05 shall be considered a part of these plans.
- At least ten days prior to the anticipated start of construction, for projects that will disturb 1 acre or more, the owner or operator of construction activity shall submit a permit application for stormwater discharge to the Colorado Department of Public Health and Environment, Water Quality Division. The application contains certification of completion of a stormwater management plan (SWMP), of which this grading and erosion control plan may be a part. For information or application materials contact:

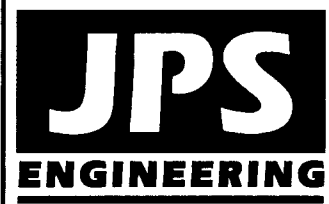
Colorado Department of Public Health and Environment  
Water Quality Control Division  
WQCD - Permits  
4300 Cherry Creek Drive South  
Denver, CO 80246-1530  
Attn: Permits Unit



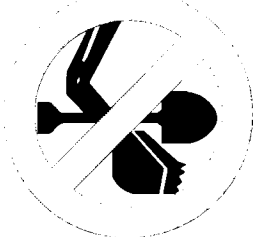
NOTE: NOTWITHSTANDING ANY DETAILS, NOTES OR PLANS SHOWN ON THESE DRAWINGS, ALL EROSION CONTROL DESIGNS AND INSTALLATIONS SHALL CONFORM TO EL PASO COUNTY STANDARDS AND POLICIES UNLESS OTHERWISE APPROVED IN WRITING.

SETTLERS RANCH - FILING NO. 2B

C1.02B



19 E. Willamette Ave.  
Colorado Springs, CO 80903  
PH: 719-477-8429  
FAX: 719-471-0766  
www.jsengr.com



CALL UTILITY NOTIFICATION  
CENTER OF COLORADO  
1-800-922-1987  
CALL BEFORE YOU DIG, GRADE, OR EXCAVATE  
FOR THE MARKING OF UNDERGROUND  
UTILITY LINES

NO.	REVISION	DATE	BY
1	COUNTY COMMENTS	7/31/07	JPS
2	PHASE 2A PLAT SUBMITTAL	5/17/13	JPS
3	EPC COMMENTS	7/19/13	JPS
4	PH 2B PLAT SUBMITTAL	6/22/15	JPS
5	COUNTY COMMENTS	9/30/15	JPS

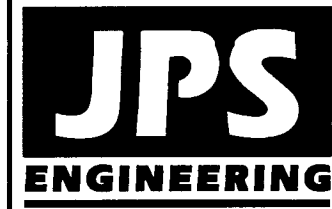
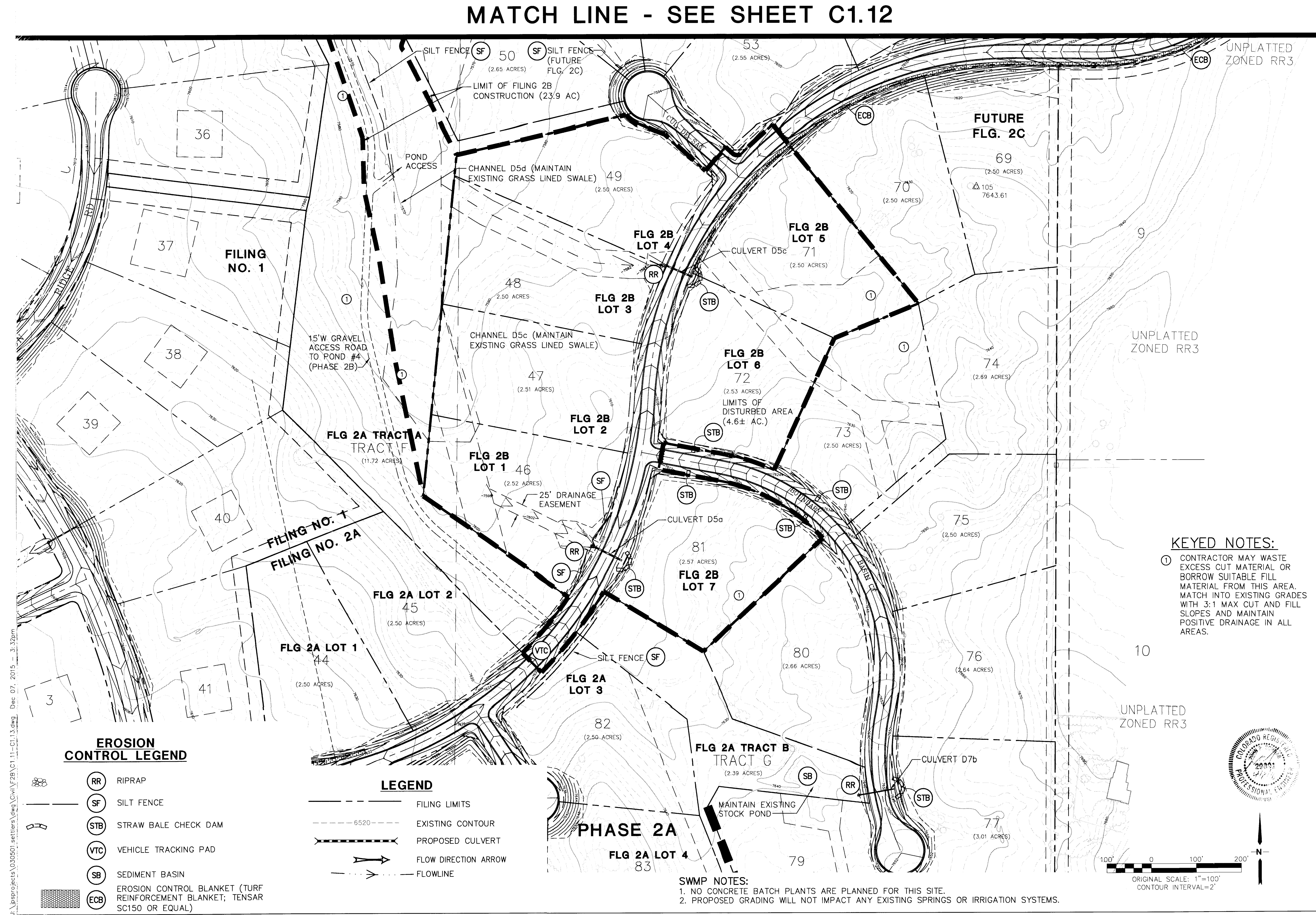
EROSION CONTROL  
NOTES & DETAILS

HORIZ. SCALE: NTS  
VERT. SCALE: N/A  
SURVEYED: RAMPART  
CREATED: 6/18/15  
PROJECT NO: 030501  
SHEET: 1

DRAWN: RMD  
DESIGNED: JPS  
CHECKED: JPS  
LAST MODIFIED: 6/20/15  
MODIFIED BY: BJW



\\projects\03050 settlers\cadd\2B\C1.11-C1.13.dwg Dec 07, 2015 3:32pm



19 E. Willamette Ave.  
Colorado Springs, CO  
80903  
PH: 719-477-9429  
FAX: 719-471-0766  
www.jpsengr.com



CALL UTILITY NOTIFICATION  
CENTER OF COLORADO  
1-800-922-1987  
CALL 2-BUSINESS DAYS IN ADVANCE  
FOR THE MARKING OF UNDERGROUND  
MEMBER UTILITIES

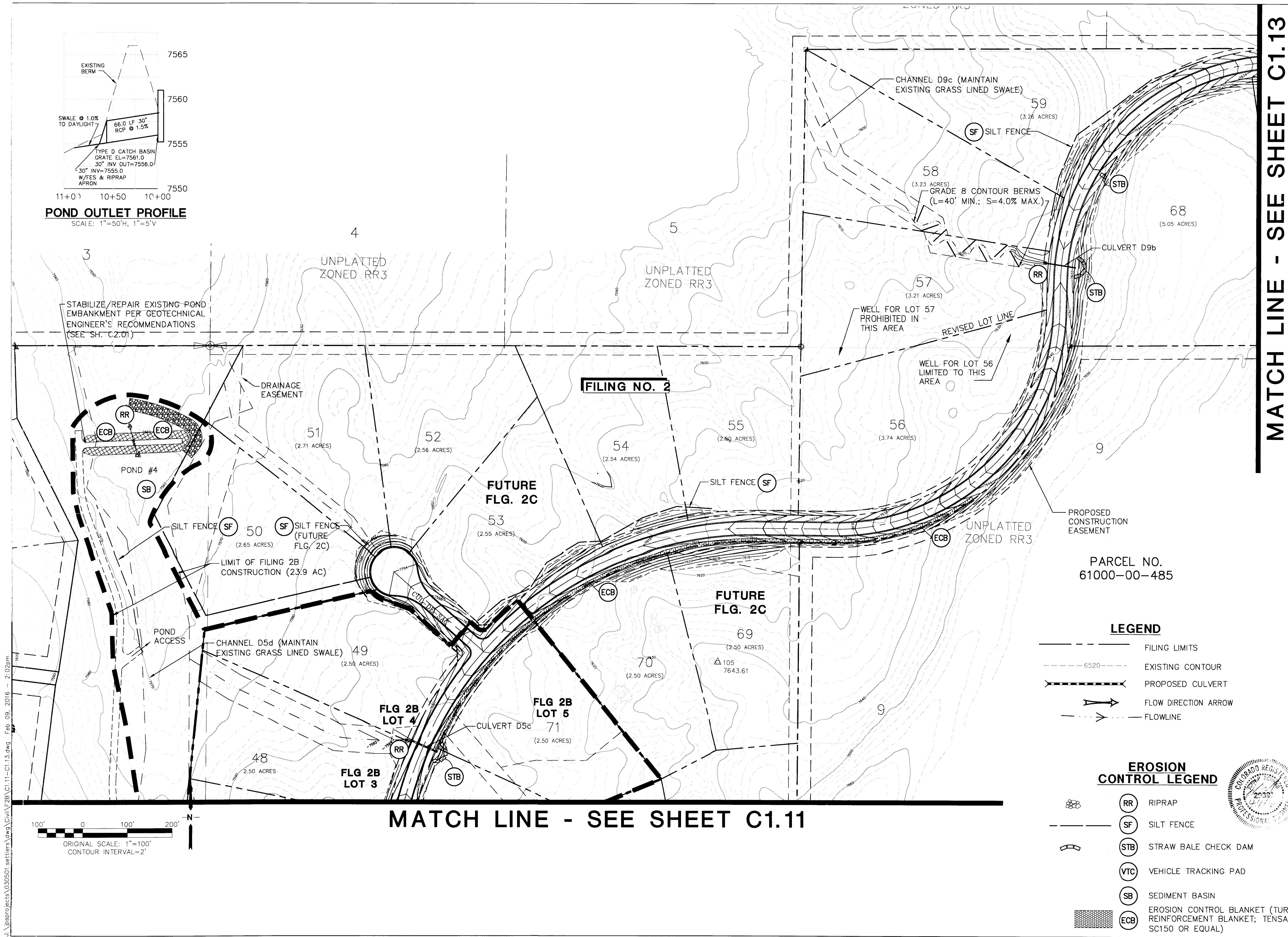
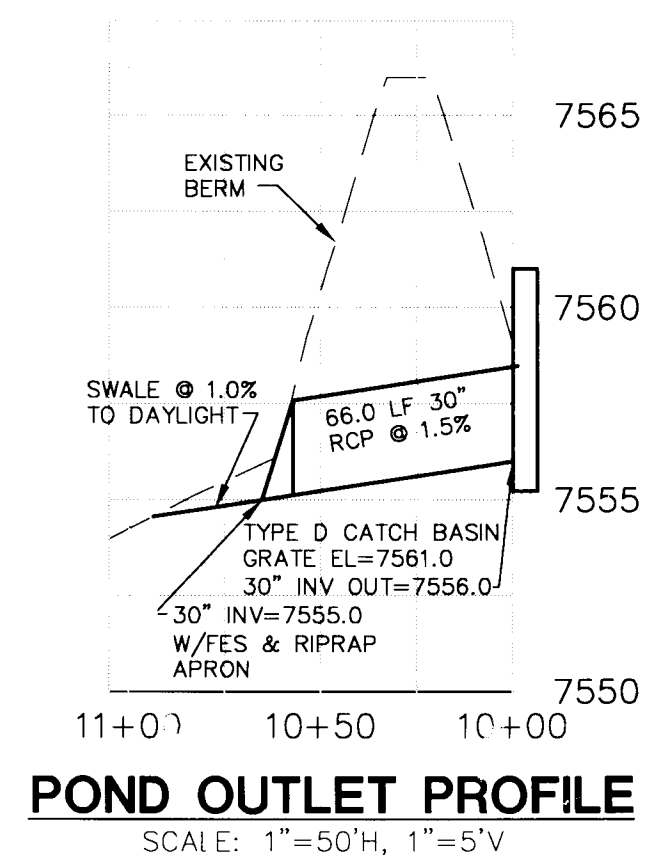
No.	REVISION	DATE	BY
1	COUNTY COMMENTS	7/31/07	JPS
2	PHASE 2A PLAT SUBMITTAL	5/17/13	JPS
3	EPC COMMENTS	7/19/13	JPS
4	PH 2B PLAT SUBMITTAL	6/22/15	JPS
5	COUNTY COMMENTS	9/30/15	JPS

HORIZ. SCALE: 1"=100'  
VERT. SCALE: 1"=100'  
DESIGNED: MJP  
CHECKED: JPS  
SURVEYED: N/A  
LAST MODIFIED: JPS  
PROJECT NO: 030501  
MODIFIED BY: BJJ

SHEET:  
**C1.11B**

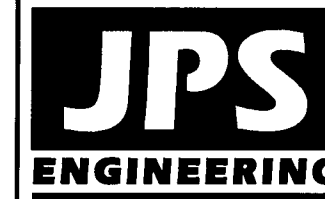


J:\projects\030501 settlers\dwg\Civil\F2B\C1.11-C1.13.dwg Feb 09, 2016 - 2:02pm

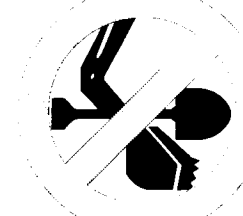


MATCH LINE - SEE SHEET C1.13

## SETTLERS RANCH - FILING NO. 2



19 E. Wilamette Ave.  
Colorado Springs, CO  
80903  
PH: 719-477-9429  
FAX: 719-471-0766  
www.jpsengr.com



CALL UTILITY NOTIFICATION  
CENTER OF COLORADO  
1-800-922-1987  
FOR BUSINESS ADVANCE  
BEFORE ANY SHALLOW  
DIGGING OR UNDERGROUND  
FOR THE MARKING OF UTILITIES.

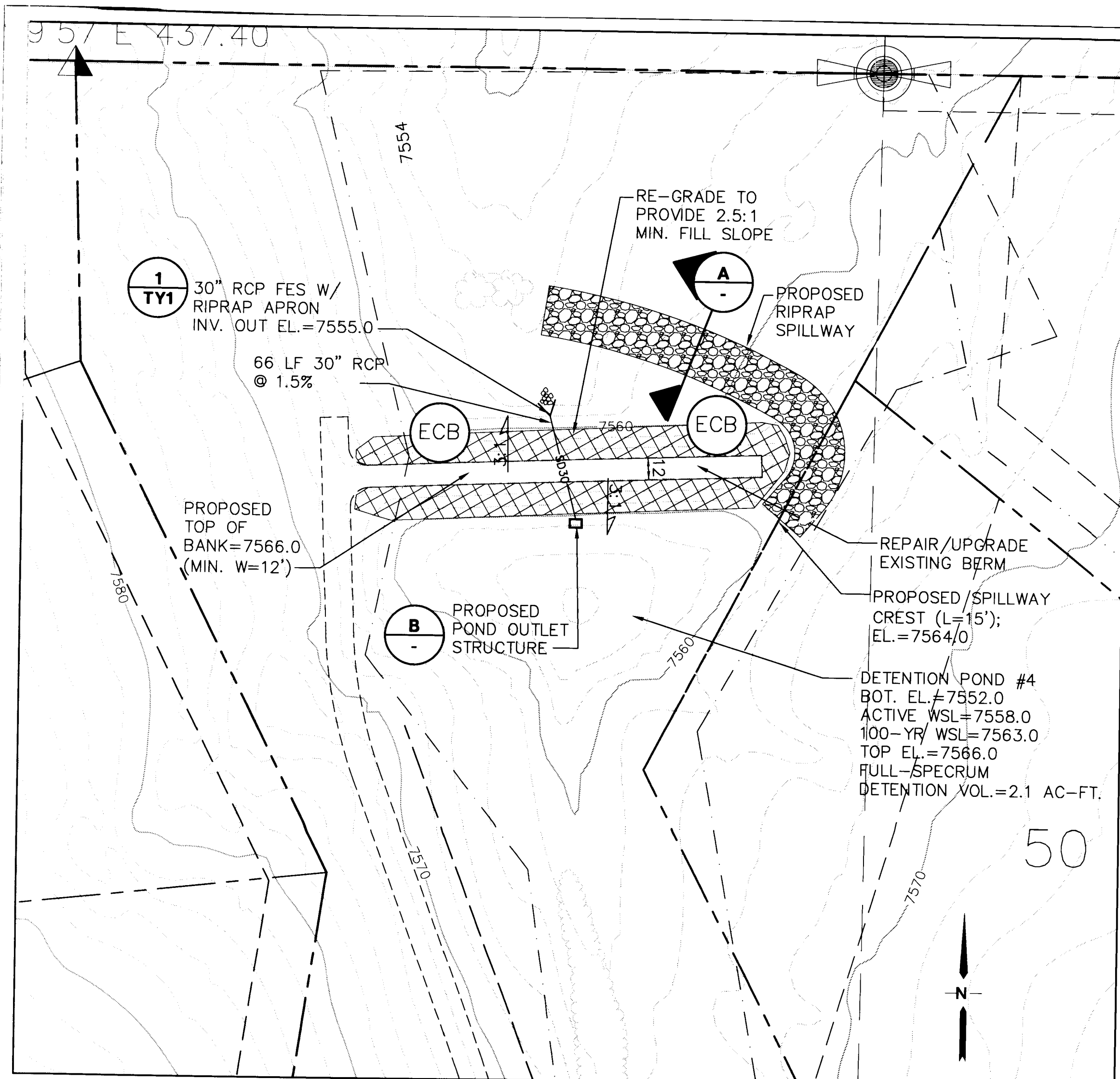
NO.	REVISION	DATE	BY
1	EPC COMMENTS	7/19/13	JPS
2	PH 2B PLAT SUBMITTAL	6/22/15	JPS
3	COUNTY COMMENTS	9/30/15	JPS
4	COUNTY COMMENTS	11/21/15	JPS
5	COUNTY COMMENTS	2/09/16	JPS

### GRADING & EROSION CONTROL PLAN (CENTER)

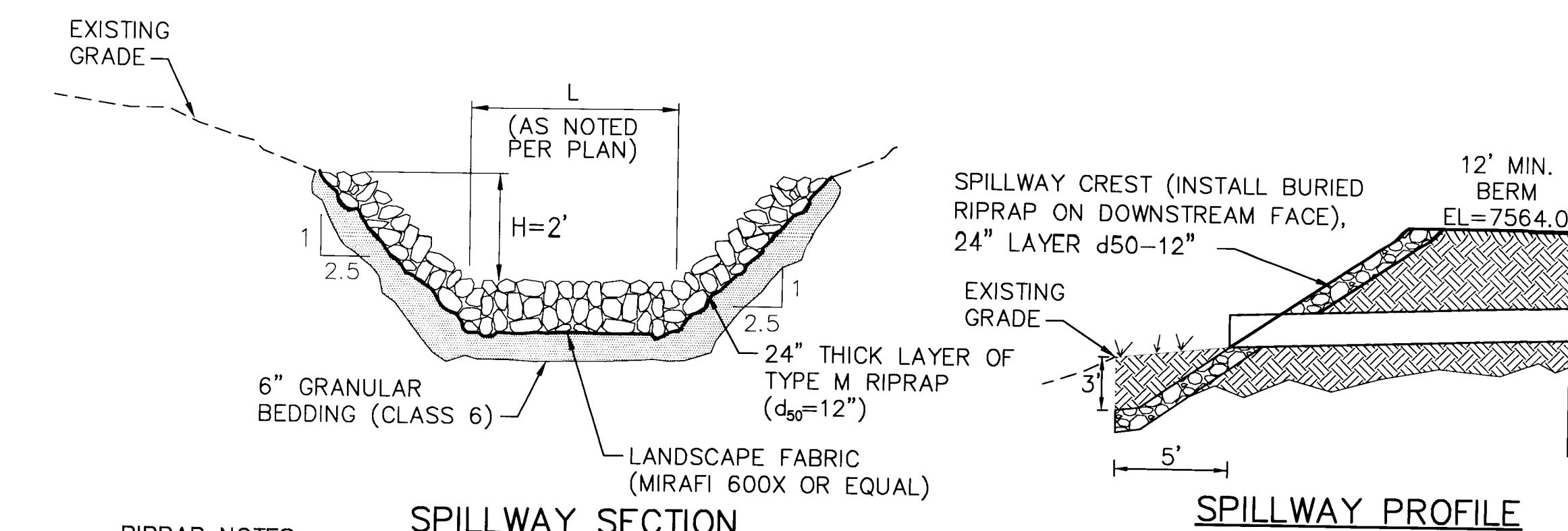
HORIZ. SCALE: 1"=100'	DRAWN: MJP
VERT. SCALE: N/A	DESIGNED: JPS
SURVEYED: RAMPART	CHECKED: JPS
CREATED: 5/2/06	LAST MODIFIED: 09/16
PROJECT NO: 030501	MODIFIED BY: BJJ

SHEET:  
**C1.12B**





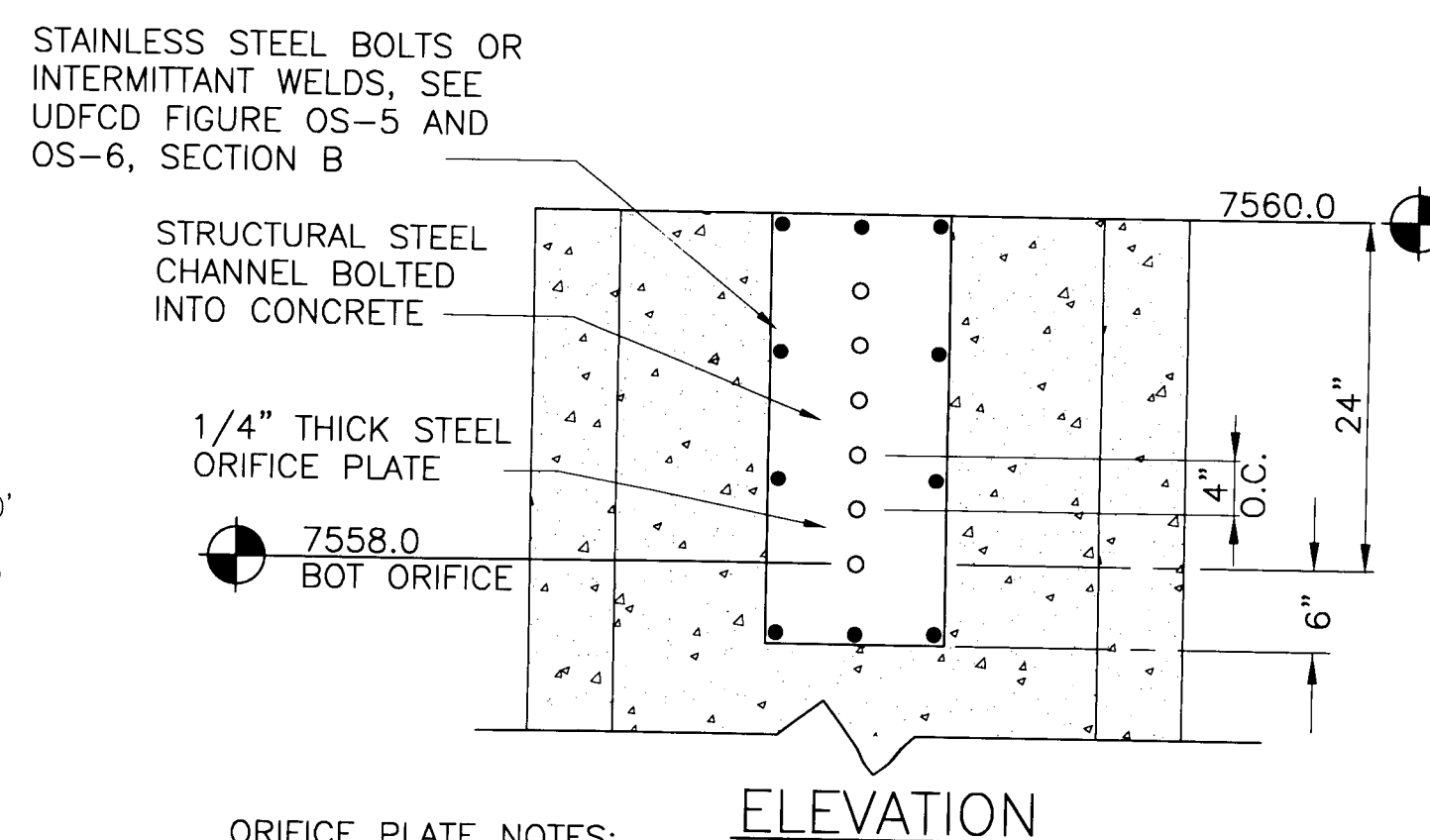
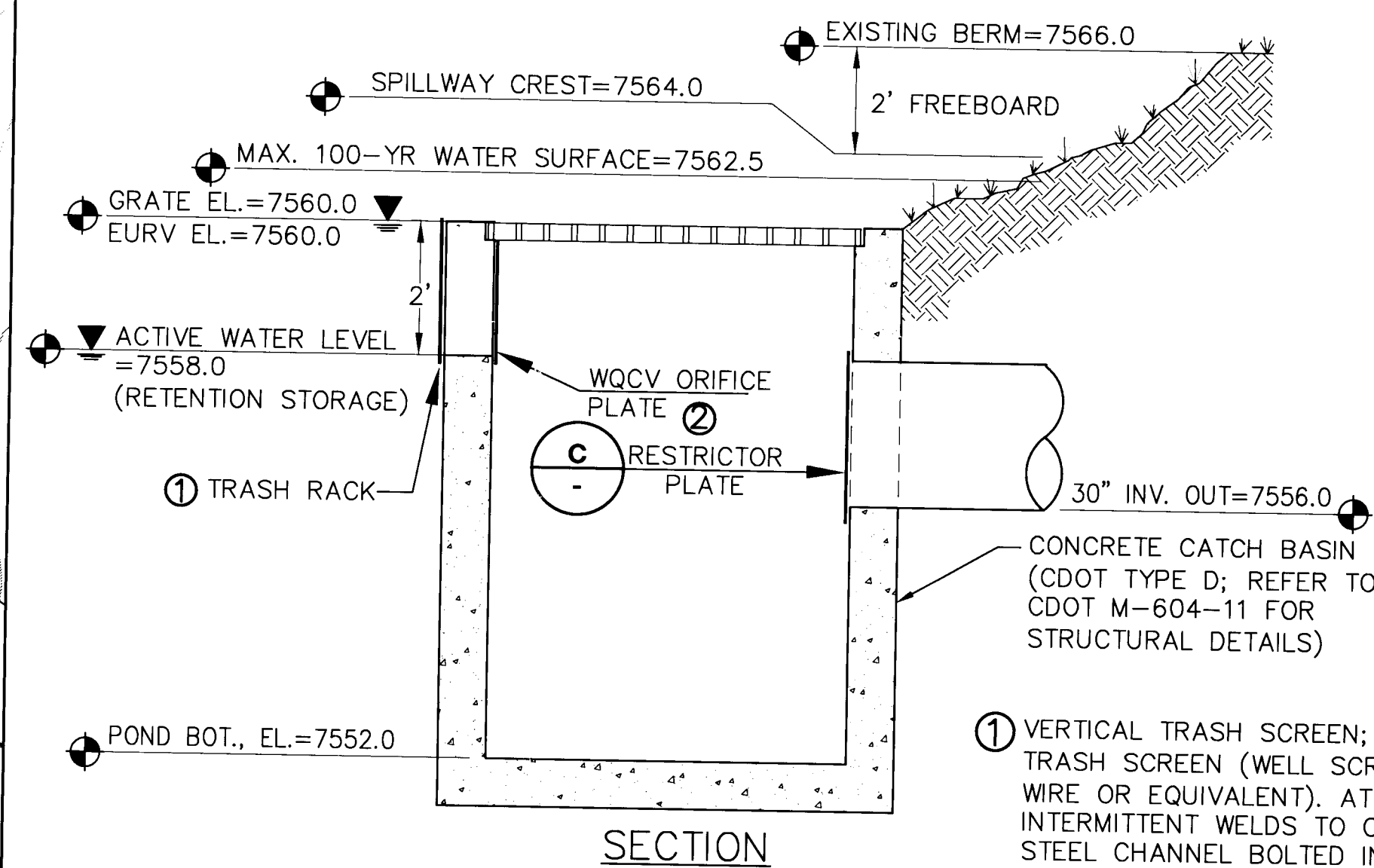
- NOTES:
- POND #4 PLAN**
1. STABILIZE/REPAIR EXISTING EMBANKMENT PER GEOTECHNICAL RECOMMENDATIONS (REFER TO ENTECH REPORT DATED 5/18/07):
    - A. REPAIR RODENT DAMAGE AND FOX DEN
    - B. RE-GRADE DOWNSTREAM FACE OF EMBANKMENT TO PROVIDE 2.5:1 MIN. SLOPE AND 12' MIN. TOP WIDTH (EL=7566.0)
    - C. RECOMPACT SOFT AREAS
    - D. RE-VEGETATE & INSTALL EROSION PROTECTION



- RIPRAP NOTES:**
1. RIPRAP SHALL HAVE A MINIMUM SPECIFIC GRAVITY OF 2.6.
  2. RIPRAP GRADATION SHALL CONFORM TO TABLE 10-7 AND 10-8 OF THE EPC DRAINAGE CRITERIA MANUAL.
  3. CONTRACTOR SHALL SUBMIT RIPRAP GRADATION TO ENGINEER FOR APPROVAL PRIOR TO DELIVERY.

**PROPOSED RIPRAP/SPILLWAY CHANNEL DETAILS (A)**

SCALE: NTS



- ORIFICE PLATE NOTES:**
1. MINIMIZE THE NUMBER OF COLUMNS.
  2. PROVIDE GASKET MATERIAL BETWEEN THE ORIFICE PLATE AND CONCRETE.
  3. BOLT PLATE TO CONCRETE 12" MAX. ON CENTER.

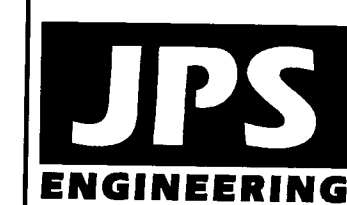
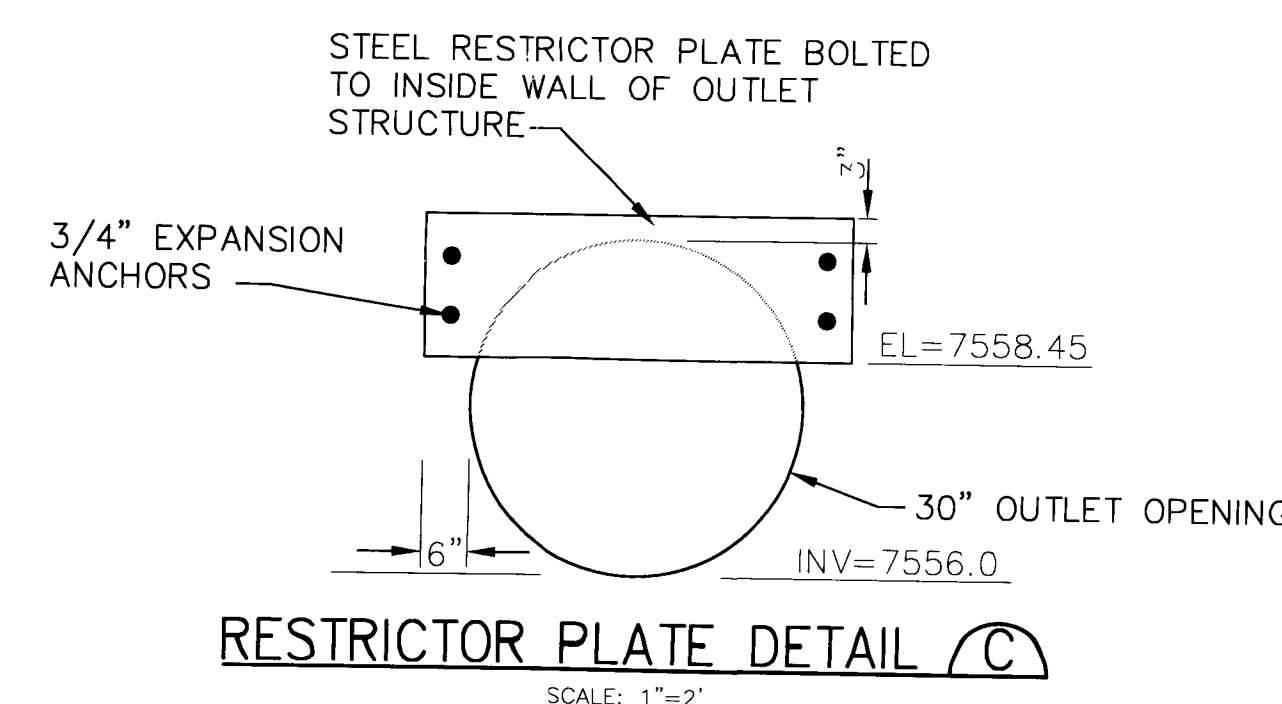
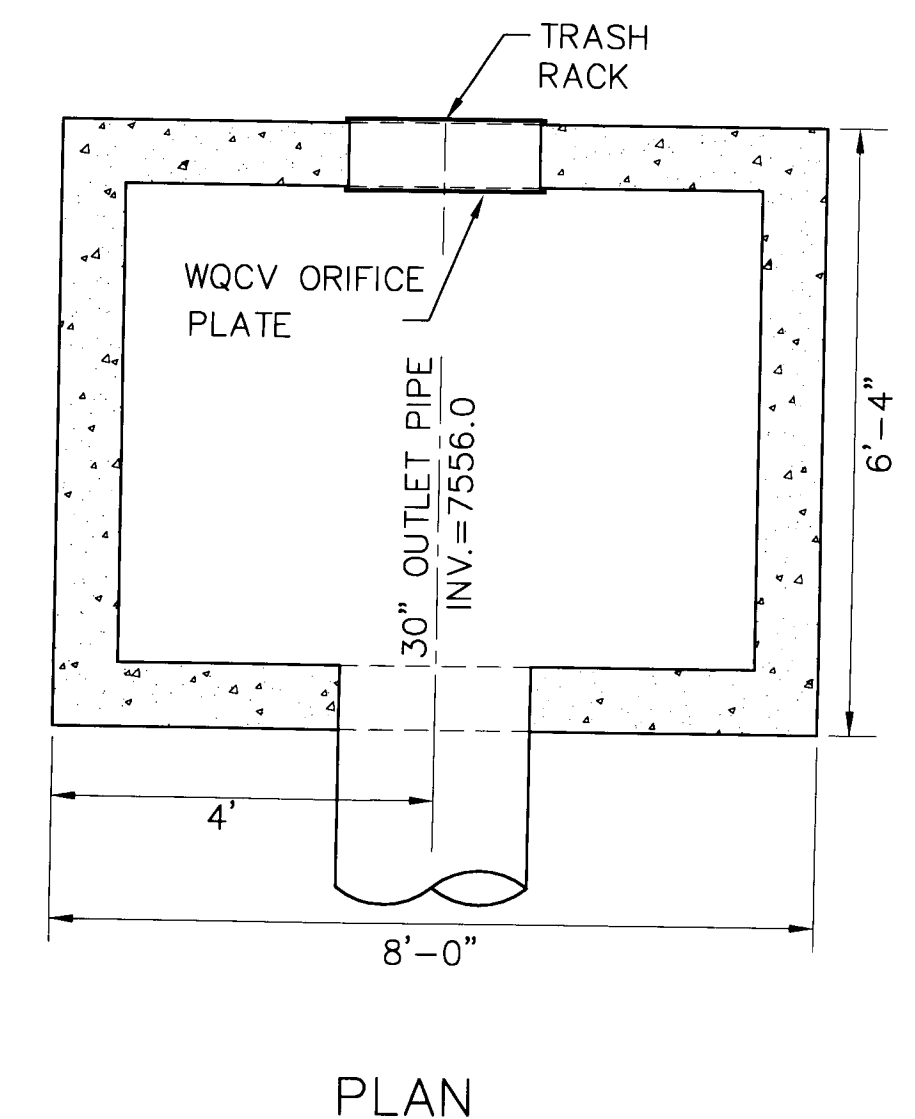
- EURV AND WQCV TRASH RACKS:**
1. WELL-SCREEN TRASH RACKS (FOR CIRCULAR ORIFICES) SHALL BE STAINLESS STEEL AND SHALL BE ATTACHED BY INTERMITTENT WELDS ALONG THE EDGE OF THE MOUNTING FRAME.
  2. STRUCTURAL DESIGN OF TRASH RACKS SHALL BE BASED ON FULL HYDROSTATIC HEAD WITH ZERO HEAD DOWNSTREAM OF THE RACK.
- OVERFLOW TRASH RACKS:**
1. ALL TRASH RACKS SHALL BE MOUNTED USING STAINLESS STEEL HARDWARE AND PROVIDED WITH HINGED AND LOCKABLE OR BOLTABLE ACCESS PANELS.
  2. TRASH RACKS SHALL BE STAINLESS STEEL, ALUMINUM, OR STEEL. STEEL TRASH RACKS SHALL BE HOT DIP GALVANIZED AND MAY BE HOT POWDER COATED AFTER GALVANIZING.
  3. TRASH RACKS SHALL BE DESIGNED SUCH THAT THE DIAGONAL DIMENSION OF EACH OPENING IS SMALLER THAN THE DIAMETER OF THE OUTLET PIPE.
  4. STRUCTURAL DESIGN OF TRASH RACKS SHALL BE BASED ON FULL HYDROSTATIC HEAD WITH ZERO HEAD DOWNSTREAM OF THE RACK.

**UDFCD FIGURE OS-4 ORIFICE PLATE AND TRASH RACK DETAILS AND NOTES**

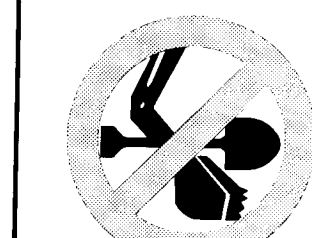
NTS

**DETENTION POND #4 OUTLET STRUCTURE (B)**

SCALE: 1/2"=1'-0"



19 E. Willamette Ave.  
Colorado Springs, CO  
80903  
PH: 719-477-9429  
FAX: 719-477-0766  
www.jpsengr.com



CALL UTILITY NOTIFICATION  
CENTER OF COLORADO  
1-800-922-1987  
CALL 2-BUSINESS DAYS IN ADVANCE  
BEFORE YOU DIG, GRADE, OR EXCAVATE  
FOR THE LOCATION OF UNDERGROUND  
MEMBER UTILITIES.

# SETTLERS RANCH - FILING NO. 2B

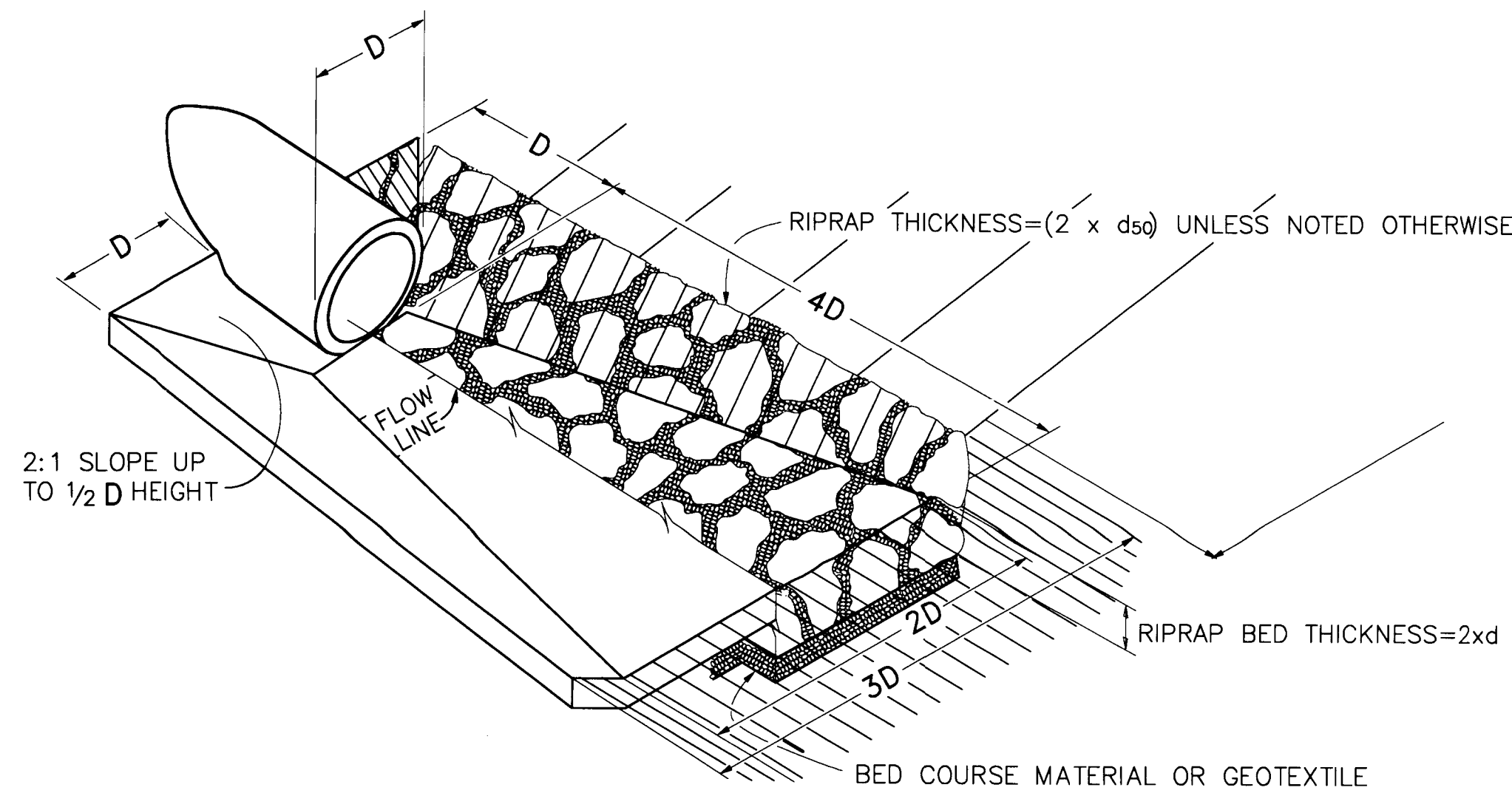
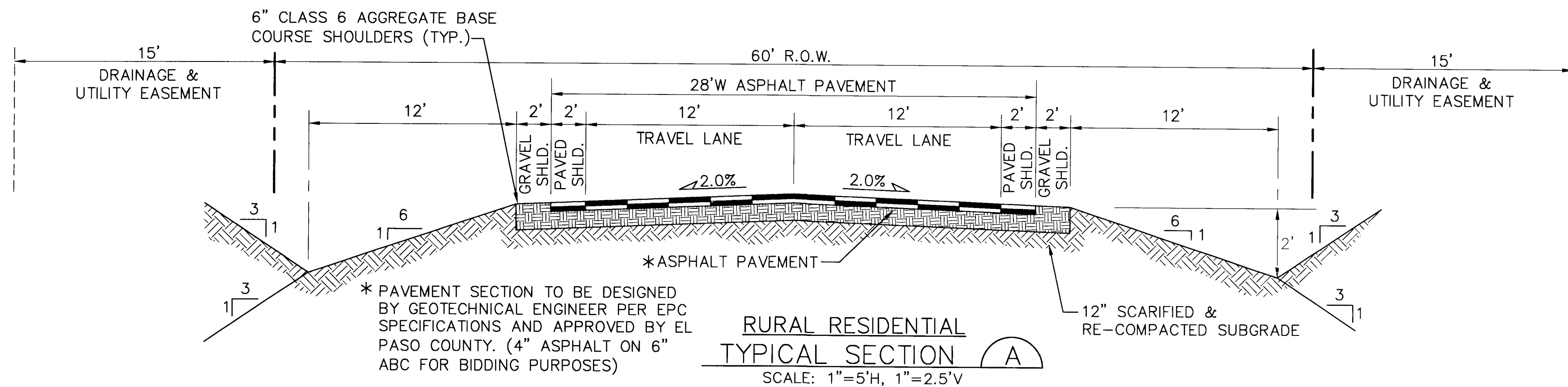
## DETENTION POND #4 PLAN & DETAILS

HORIZ. SCALE: 1"=50'	DRAWN: MJP
VERT. SCALE: N/A	DESIGNED: JPS
SURVEYED: RAMPART	CHECKED: JPS
CREATED: 6/18/15	LAST MODIFIED: 2/18/16
PROJECT NO: 030501	MODIFIED BY: BJJ
SHEET:	

**C2.01B**

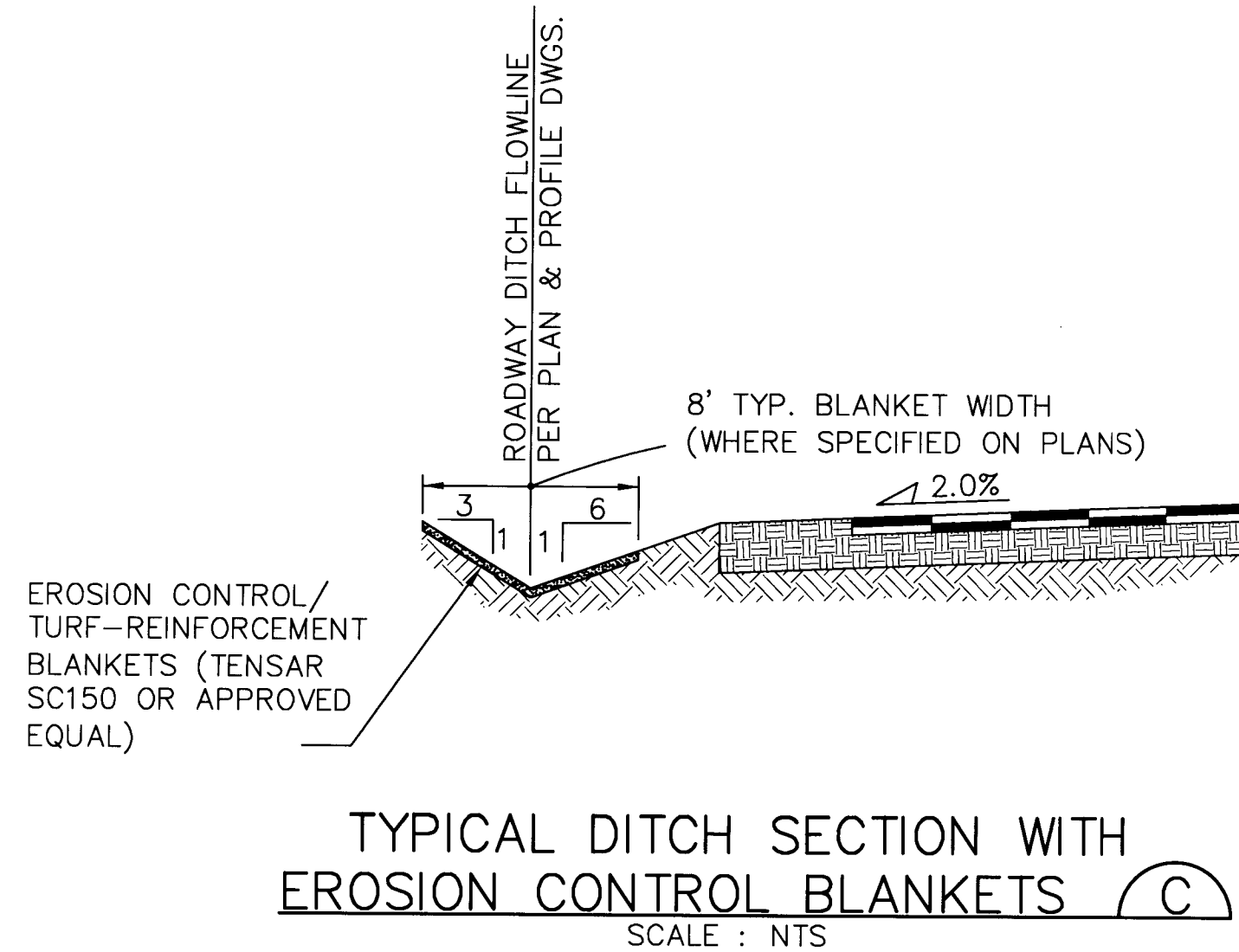


J:\projects\030501 settlers.dwg\civil\28\TY1.dwg Dec 07, 2015 3:36pm



CULVERT	CULVERT SIZE	RR SIZE (d <sub>50</sub> )	RIPRAP APRON DIMENSIONS
D5a	36"	TYPE M (12")	15'Lx9'Wx2'T
D5c	36"	TYPE H (18")	15'Lx9'Wx3'T
POND #4 OUTLET	36"	TYPE H (18")	15'Lx9'Wx3'T

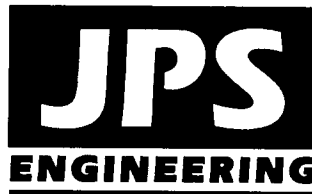
TYPICAL RIPRAP APRON/  
CULVERT OUTLET PAVING 1  
NOT TO SCALE



SETTLERS RANCH - FILING NO. 2B

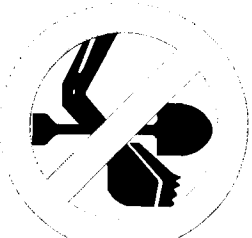
TYPICAL SECTIONS  
AND DETAILS

HORIZ. SCALE: 1"=5'	DRAWN: MJP
VERT. SCALE: AS SHOWN	DESIGNED: JPS
SURVEYED:	CHECKED: JPS
CREATED: 6/18/15	LAST MODIFIED: 9/30/15
PROJECT NO: 030501	MODIFIED BY: BJJ
SHEET:	TY1B



19 E. Willamette Ave.  
Colorado Springs, CO  
80903

PH: 719-477-9429  
FAX: 719-471-0766  
www.jpsengr.com



CALL UTILITY NOTIFICATION  
CENTER OF COLORADO  
1-800-922-1987  
CALL BEFORE YOU DIG  
FOR THE MARKING OF UNDERGROUND  
UTILITIES

No.	REVISION	BY	DATE
A	COUNTY COMMENTS	JPS	7/31/07
A	PHASE 2A PLAT SUBMITTAL	JPS	5/17/13
A	EPC COMMENTS	JPS	7/19/13
A	PH 2B PLAT SUBMITTAL	JPS	6/22/15
A	EL PASO COUNTY COMMENTS	JPS	9/30/15



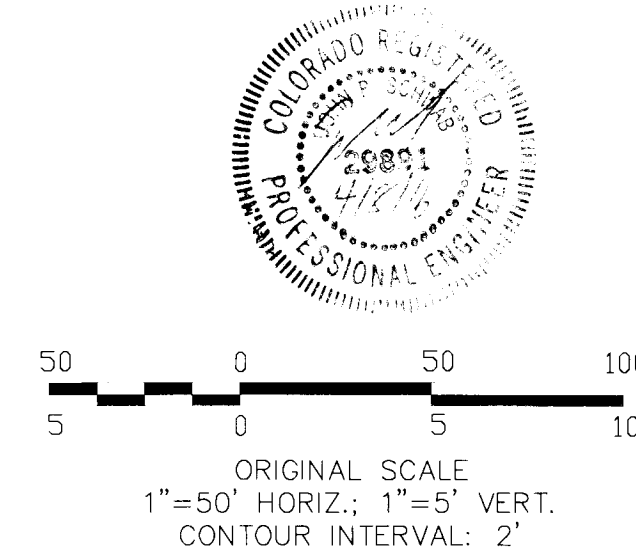
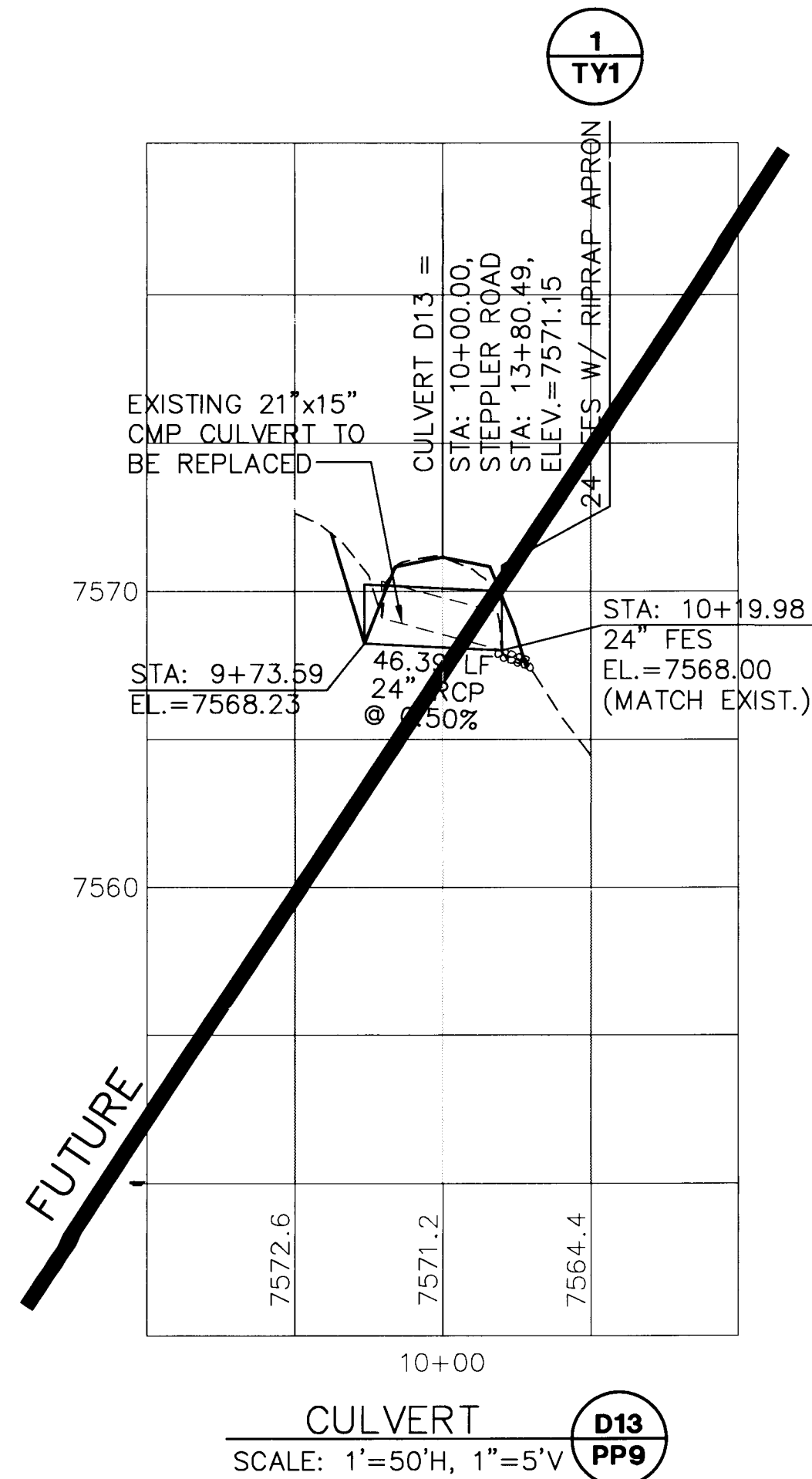
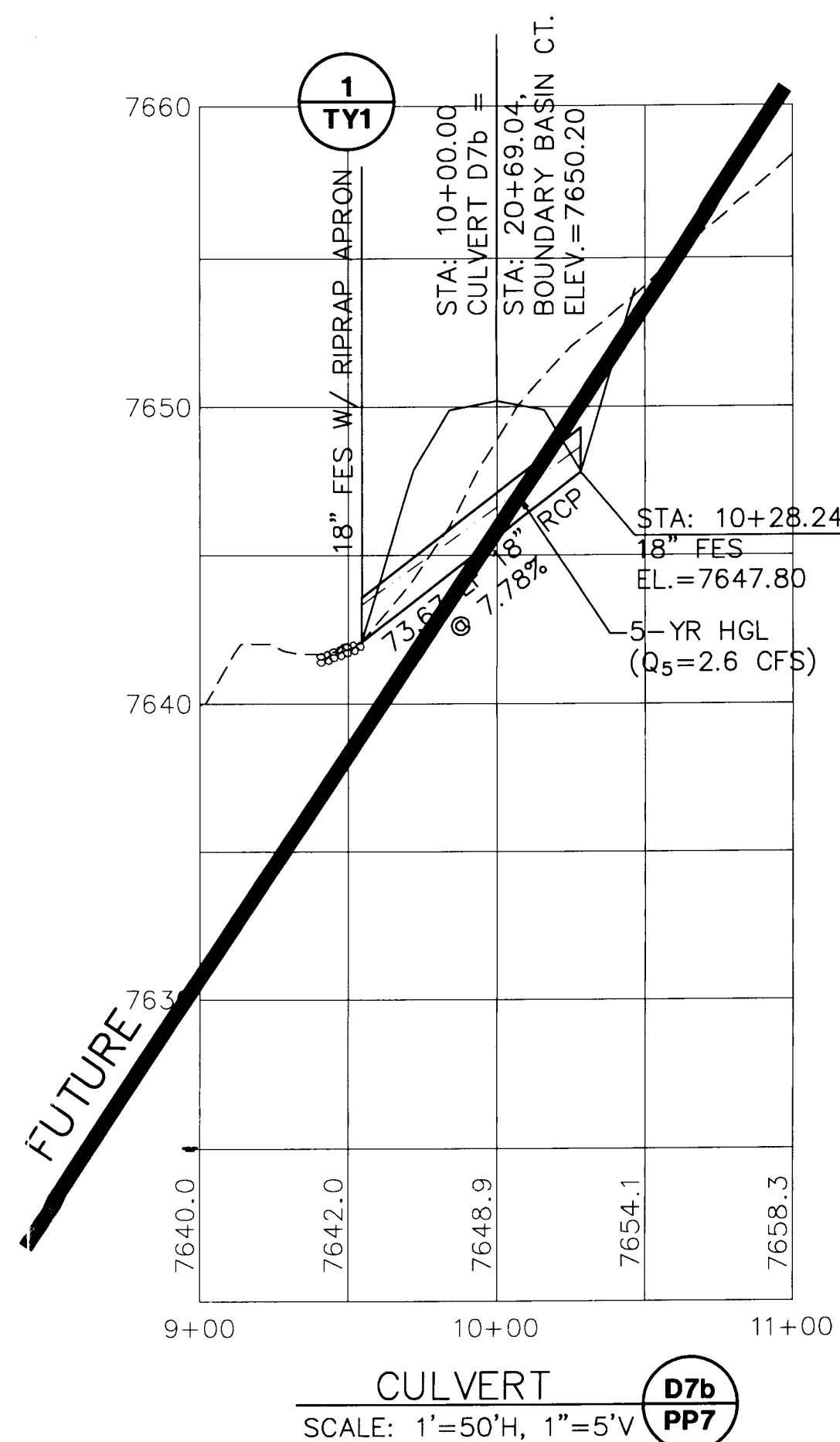
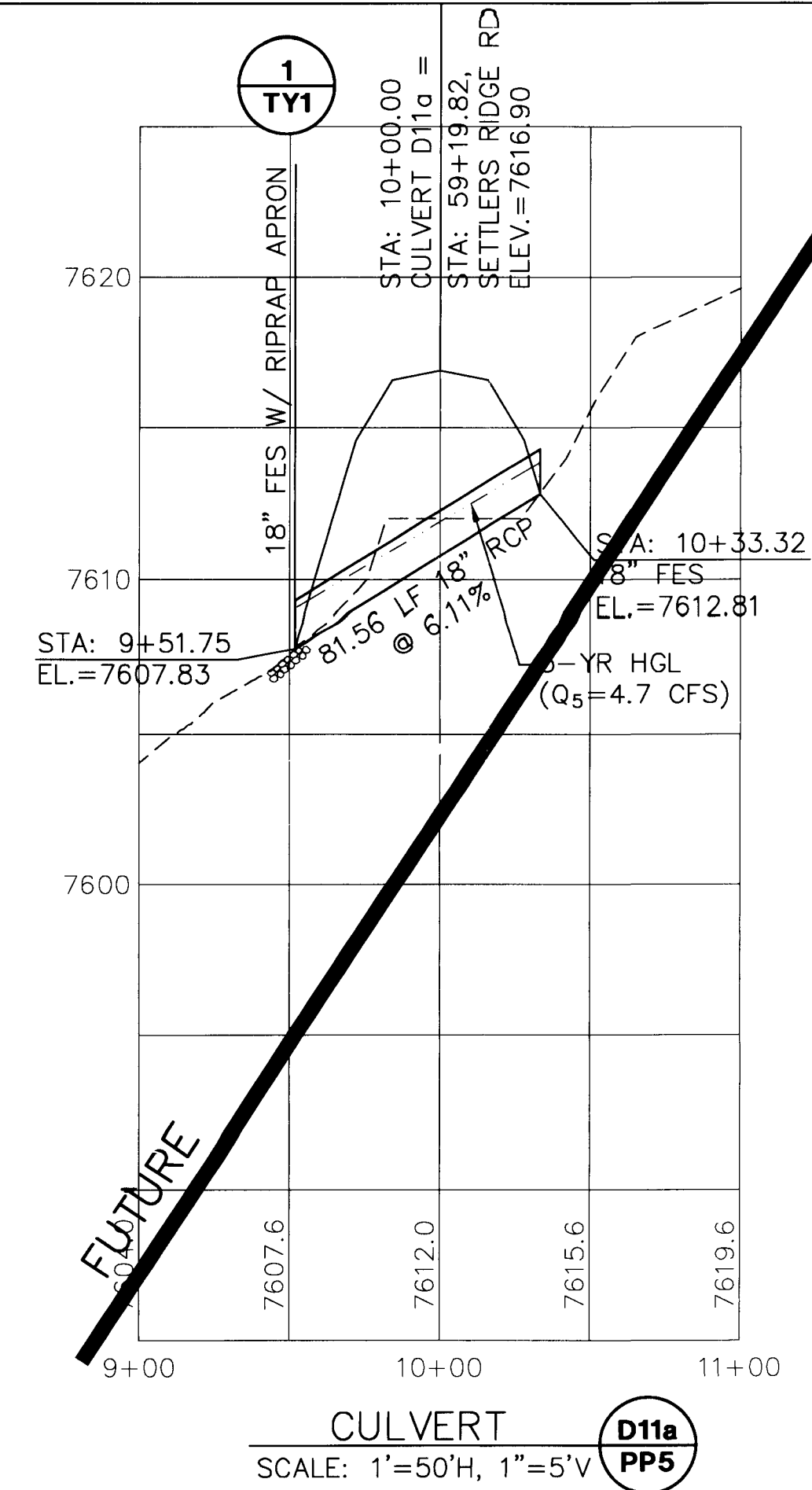
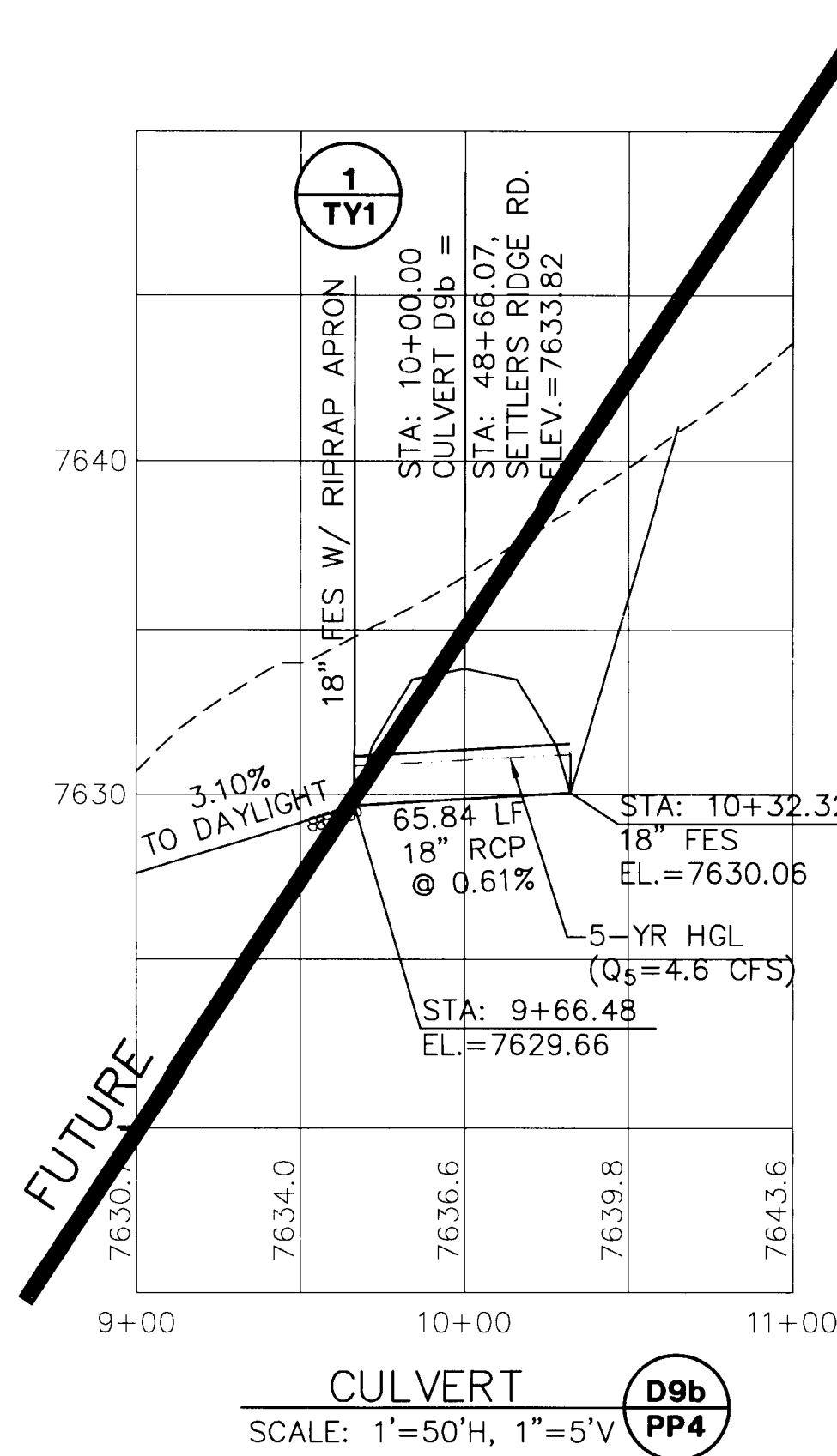
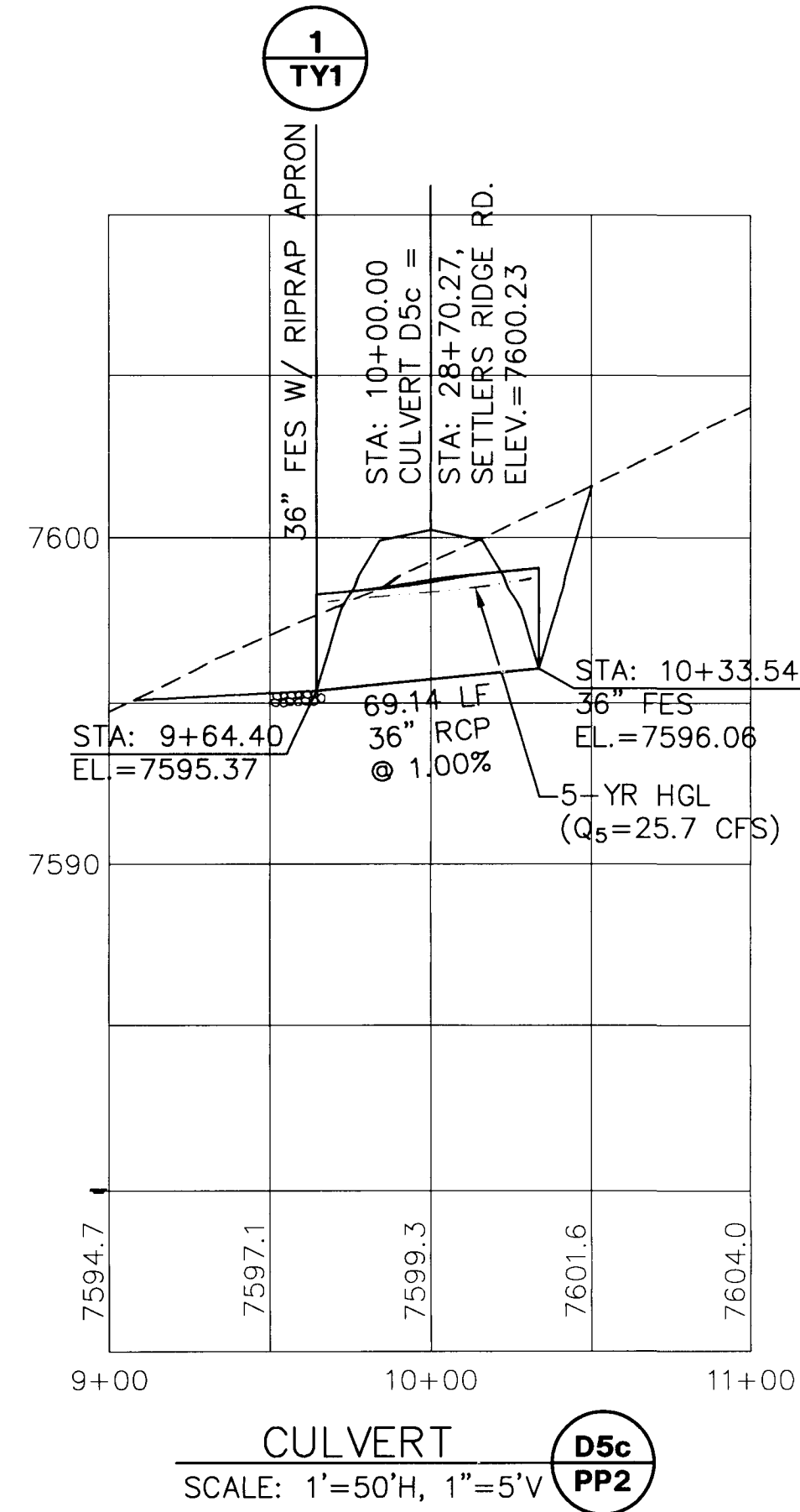
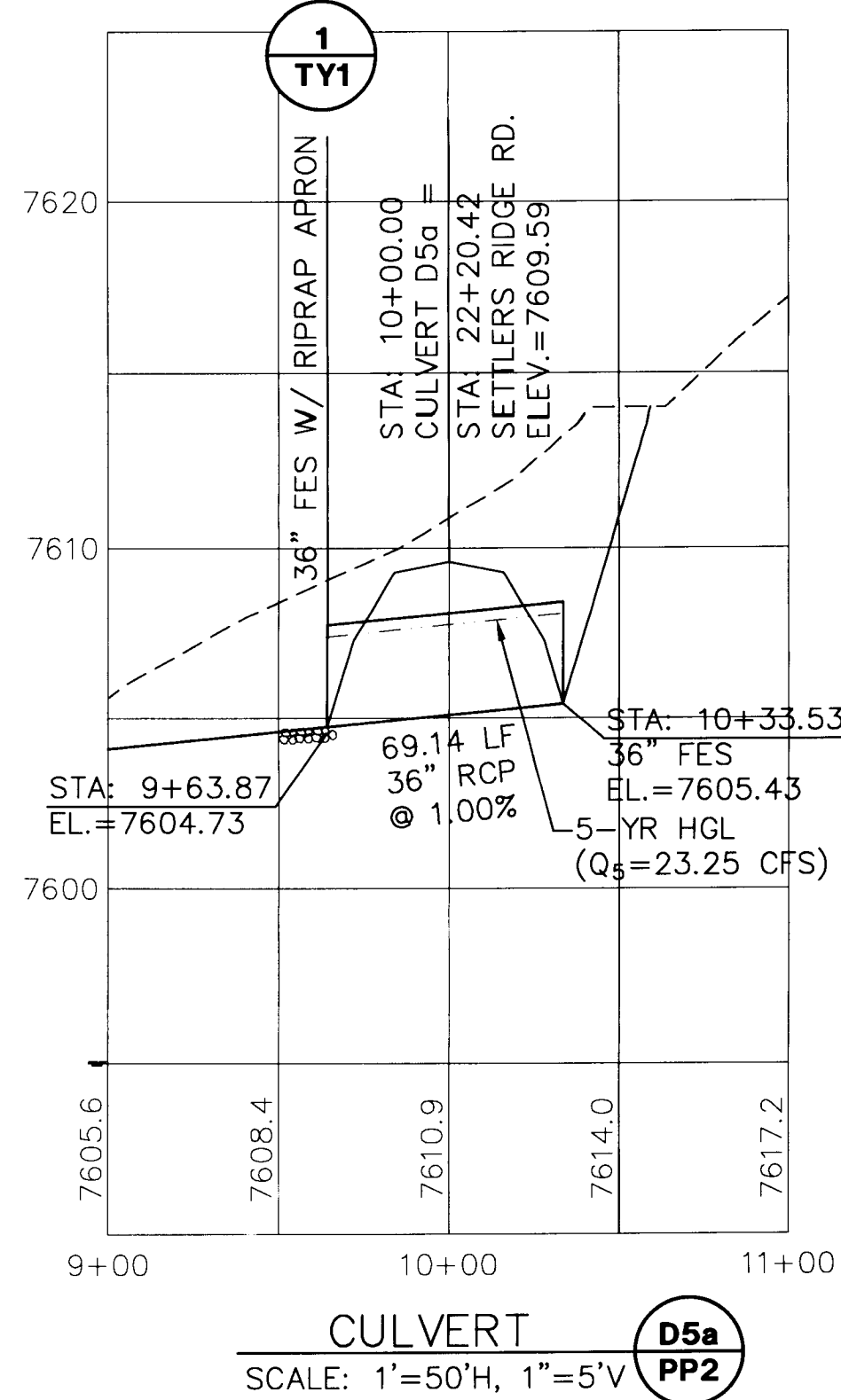






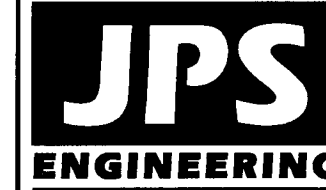


J:\paprojects\030501 settlers ranch\F2B\SD1.dwg Dec 07, 2015 - 3:44pm



## SETTLERS RANCH - FILING NO. 2B

### CULVERT PROFILES



19 E. Willamette Ave.  
Colorado Springs, CO  
80903  
PH: 719-477-9429  
FAX: 719-471-0766

No.	REVISION	BY	DATE
1	COUNTY COMMENTS	JPS	7/31/07
2	PHASE 2A PLAT SUBMITTAL	JPS	5/17/13
3	EPC COMMENTS	JPS	7/19/13
4	PH 2B PLAT SUBMITTAL	JPS	6/22/15
5	COUNTY COMMENTS	JPS	9/30/15

HORIZ. SCALE: 1"=50'	DRAWN: RMD
VERT. SCALE: 1"=5'	DESIGNED: JPS
SURVEYED: RAMPART	CHECKED: JPS
CREATED: 6/18/15	LAST MODIFIED: 9/30/15
PROJECT NO: 030501	MODIFIED BY: RMD
SHEET:	

SD1B