

SEE SHEET 11

SEE SHEET 9

DEMOLITION PLANS
EX STA: 38+00.00 TO 68+00.00
SCALE: 1"=100'

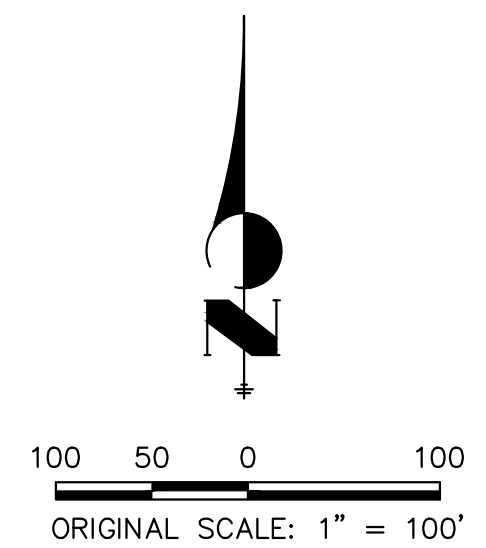
Sand Creek Demolitions		
Totals	Sq Ft	Acres
Reach 1 Permanent Loss	32,636.00	0.74
Reach 2 Permanent Loss	159,695.00	4.28
Reach 3 Permanent Loss	184,711.00	5.44
Total Permanent Loss	377,042.00	10.46

BENCHMARK

1. THE TOP OF AN ALUMINUM SURVEYORS CAP, STAMPED "9853", AT THE SOUTHEAST BOUNDARY CORNER OF BARBARICK SUBDIVISION
NORTHING = 411416.273
EASTING = 235167.071
ELEVATION = 7023.42
2. THE TOP OF A RED PLASTIC SURVEYORS CAP, ILLEGIBLE, AT THE NORTHWEST BOUNDARY CORNER OF PANNER RANCHER'S SUBDIVISION
NORTHING = 410095.404
EASTING = 235052.131
ELEVATION = 7000.40
3. THE TOP OF A RED PLASTIC SURVEYORS CAP, STAMPED "38141", AT THE SOUTHWEST BOUNDARY CORNER OF BARBARICK SUBDIVISION
NORTHING = 411399.962
EASTING = 233849.817
ELEVATION = 7030.82

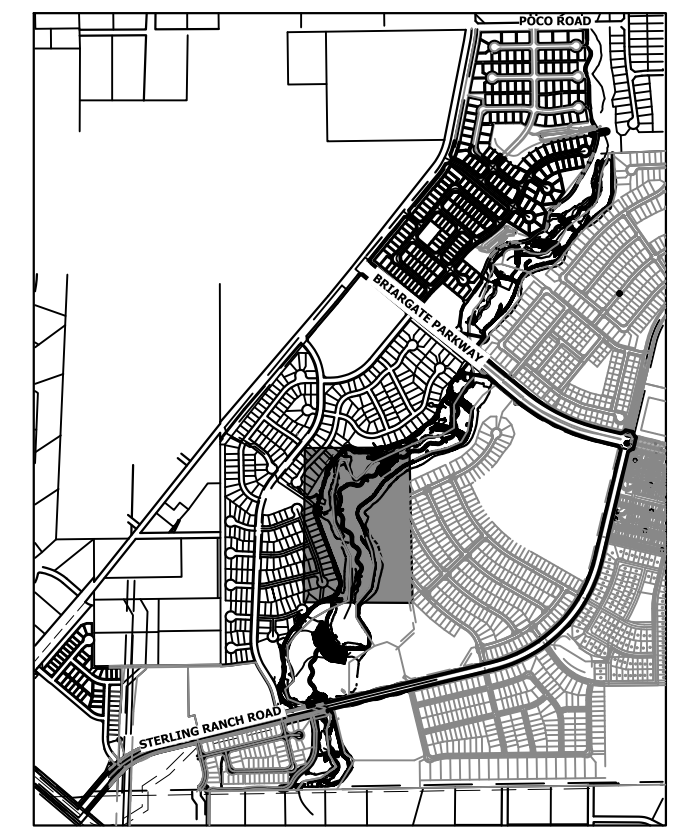
BASIS OF BEARINGS

THE SOUTH LINE OF THE SOUTHWEST QUARTER OF SECTION 34, TOWNSHIP 12 SOUTH, RANGE 65 WEST OF THE 6TH P.M. AS MONUMENTED AT THE SOUTHWEST CORNER OF SAID BY A 2-1/2" ALUMINUM CAP STAMPED "LS 11624" AND AT THE SOUTHEAST CORNER OF SAID SOUTHWEST QUARTER BY A 2-1/2" ALUMINUM CAP STAMPED "LS 11624", SAID LINE BEARS N89°14'14"E, A DISTANCE OF 2,722.69 FEET.



LEGEND

WETLAND: DISTURBED AREAS



KEY MAP
SCALE: 1"=2000'

UNTIL SUCH TIME AS THESE DRAWINGS ARE APPROVED BY THE APPROPRIATE REVIEWING AGENCIES, JR ENGINEERING APPROVES THEIR USE DESIGNATED BY WRITTEN AUTHORIZATION.

PREPARED FOR
SR LAND, LLC
20 BOULDER CRESCENT
2ND FLOOR
COLORADO SPRINGS, CO 80903
JAMES F. MORLEY
(719) 419-3024

J.R. ENGINEERING
A Westman Company
Central 303-740-9888 • Colorado Springs 719-583-2583
Fort Collins 970-491-9888 • www.jrengineering.com

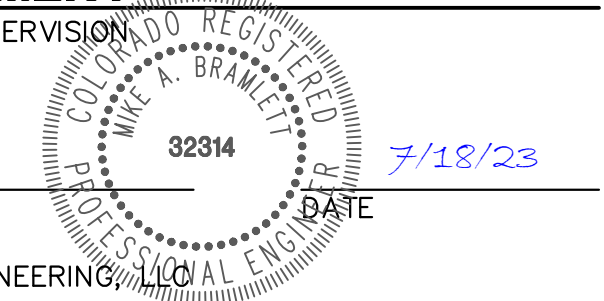
No.	REVISION	BY	DATE	H-SCALE	V-SCALE	DATE	DESIGNED BY	DRAWN BY	CHECKED BY
				1"=100'	N/A	7/18/23	DJV	NEO	

SAND CREEK RESTORATION
DEMOLITION PLAN
SHEET 10 OF 121
JOB NO. 25188.04

ENGINEER'S STATEMENT

PREPARED UNDER MY DIRECT SUPERVISION

Mike Bramlett
MIKE A. BRAMLETT, P.E.
COLORADO P.E. 32314



FOR AND ON BEHALF OF JR ENGINEERING

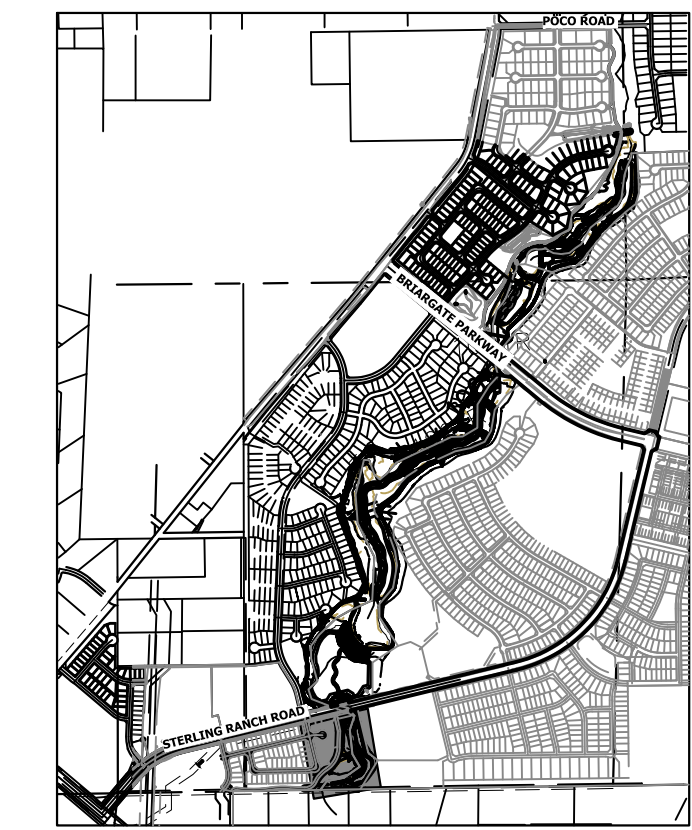
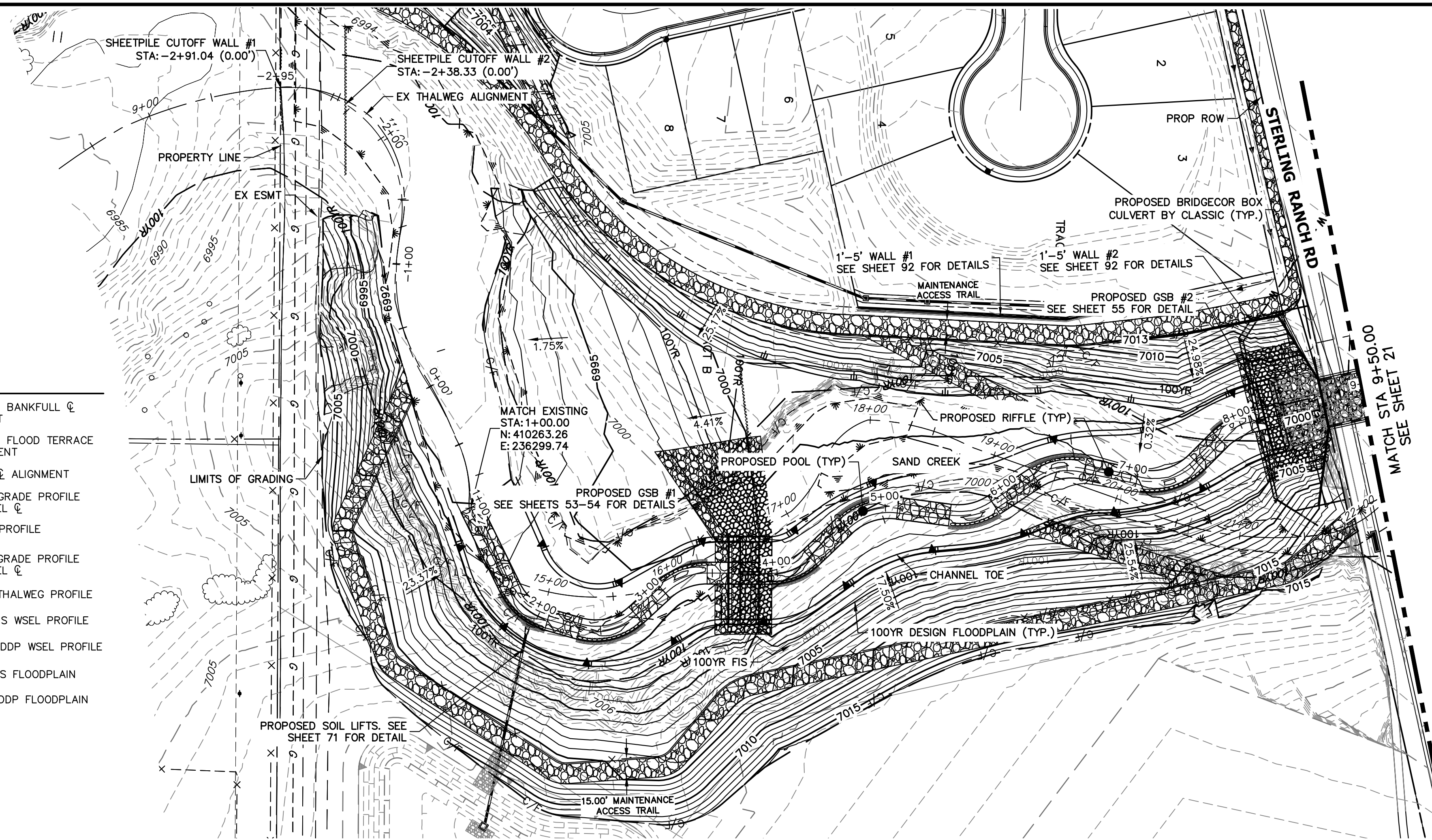


Know what's below.
Call before you dig.

X:\25188\04\25188\Drawings\Sheet\Demolition Plans\25188-04\01.dwg, D:\02, 8/22/2023 6:06:52 PM, vbaug10

LEGEND

- PROPOSED BANKFULL & ALIGNMENT
- PROPOSED FLOOD TERRACE & ALIGNMENT
- EXISTING & ALIGNMENT
- FINISHED GRADE PROFILE @ CHANNEL &
- THALWEG PROFILE
- EXISTING GRADE PROFILE @ CHANNEL &
- EXISTING THALWEG PROFILE
- 100-YR FIS WSEL PROFILE
- 100-YR MDDP WSEL PROFILE
- 100YR 100-YR FIS FLOODPLAIN
- 100YR 100-YR MDDP FLOODPLAIN

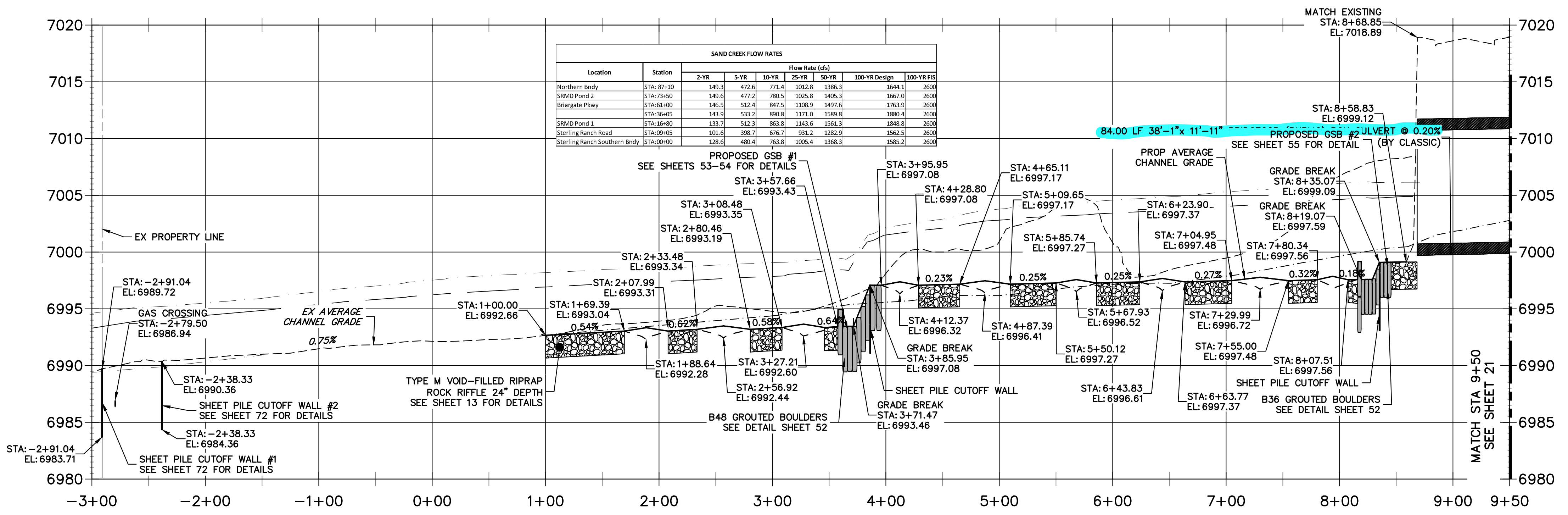


- BENCHMARK**
- THE TOP OF AN ALUMINUM SURVEYORS CAP, STAMPED "9853", AT THE SOUTHEAST BOUNDARY CORNER OF BARBARICK SUBDIVISION
 NORTHING = 411416.273
 EASTING = 235167.071
 ELEVATION = 7023.42
 - THE TOP OF A RED PLASTIC SURVEYORS CAP, ILLEGIBLE, AT THE NORTHWEST BOUNDARY CORNER OF PANNEE RANCHEROS SUBDIVISION
 NORTHING = 410095.404
 EASTING = 235052.131
 ELEVATION = 7000.40
 - THE TOP OF A RED PLASTIC SURVEYORS CAP, STAMPED "381417", AT THE SOUTHWEST BOUNDARY CORNER OF BARBARICK SUBDIVISION
 NORTHING = 411399.962
 EASTING = 233849.817
 ELEVATION = 7030.82

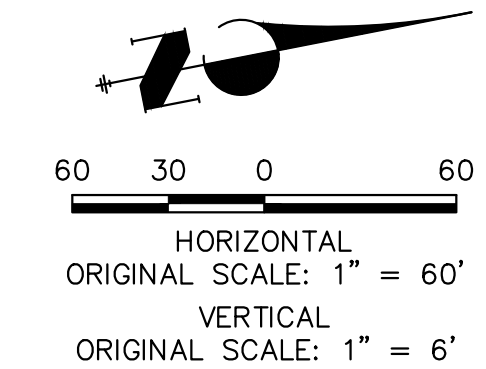
BASIS OF BEARINGS

THE SOUTH LINE OF THE SOUTHWEST QUARTER OF SECTION 34, TOWNSHIP 12 SOUTH, RANGE 65 WEST OF THE 6TH P.M. AS MONUMENTED AT THE SOUTHWEST CORNER OF SAID BY A 2-1/2" ALUMINUM CAP STAMPED "LS 11624" AND AT THE SOUTHEAST CORNER OF SAID SOUTHWEST QUARTER BY A 2-1/2" ALUMINUM CAP STAMPED "LS 11624", SAID LINE BEARS N89°14'14"E, A DISTANCE OF 2,722.69 FEET.

**SAND CREEK - BANKFULL PROFILE 1
STA -3+00.00 TO 9+50.00**



- NOTE**
- NO GRADING OR CONSTRUCTION ACTIVITIES ON PRIVATE PROPERTY.
 - DRIVE SHEET PILE THROUGH BEDROCK OR MINIMUM OF 6 FEET.
 - SEE SHEETS 26-31 FOR STABLE GRADE PROFILES.



ENGINEER'S STATEMENT
 PREPARED UNDER MY DIRECT SUPERVISION

Mike Bramlett
 MIKE A. BRAMLETT, P.E.
 COLORADO P.E. 32314
 FOR AND ON BEHALF OF JR ENGINEERING

7/18/23

UNTIL SUCH TIME AS THESE DRAWINGS ARE APPROVED BY THE APPROPRIATE REVIEWING AGENCIES, JR ENGINEERING APPROVES THEIR USE AS DESIGNATED BY WRITTEN AUTHORIZATION.

PREPARED FOR
SR LAND, LLC
 20 BOULDER CRESCENT
 2ND FLOOR
 COLORADO SPRINGS, CO 80903
 JAMES F. MORLEY
 (719) 419-3024

J.R. ENGINEERING
 A Westcon Company
 Centennial 303-740-8888 • Colorado Springs 719-583-2583
 Fort Collins 970-491-9888 • www.jrengineering.com

BY DATE

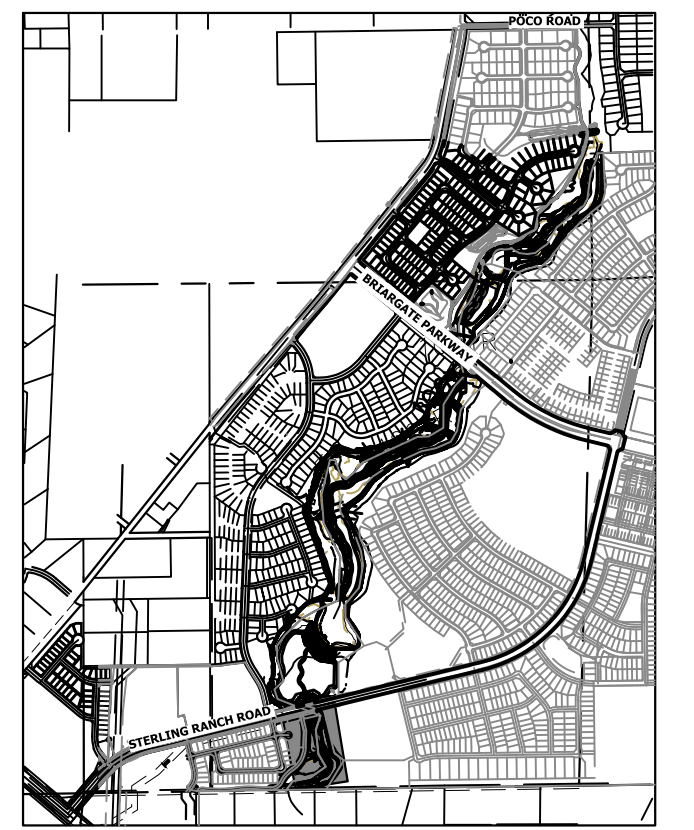
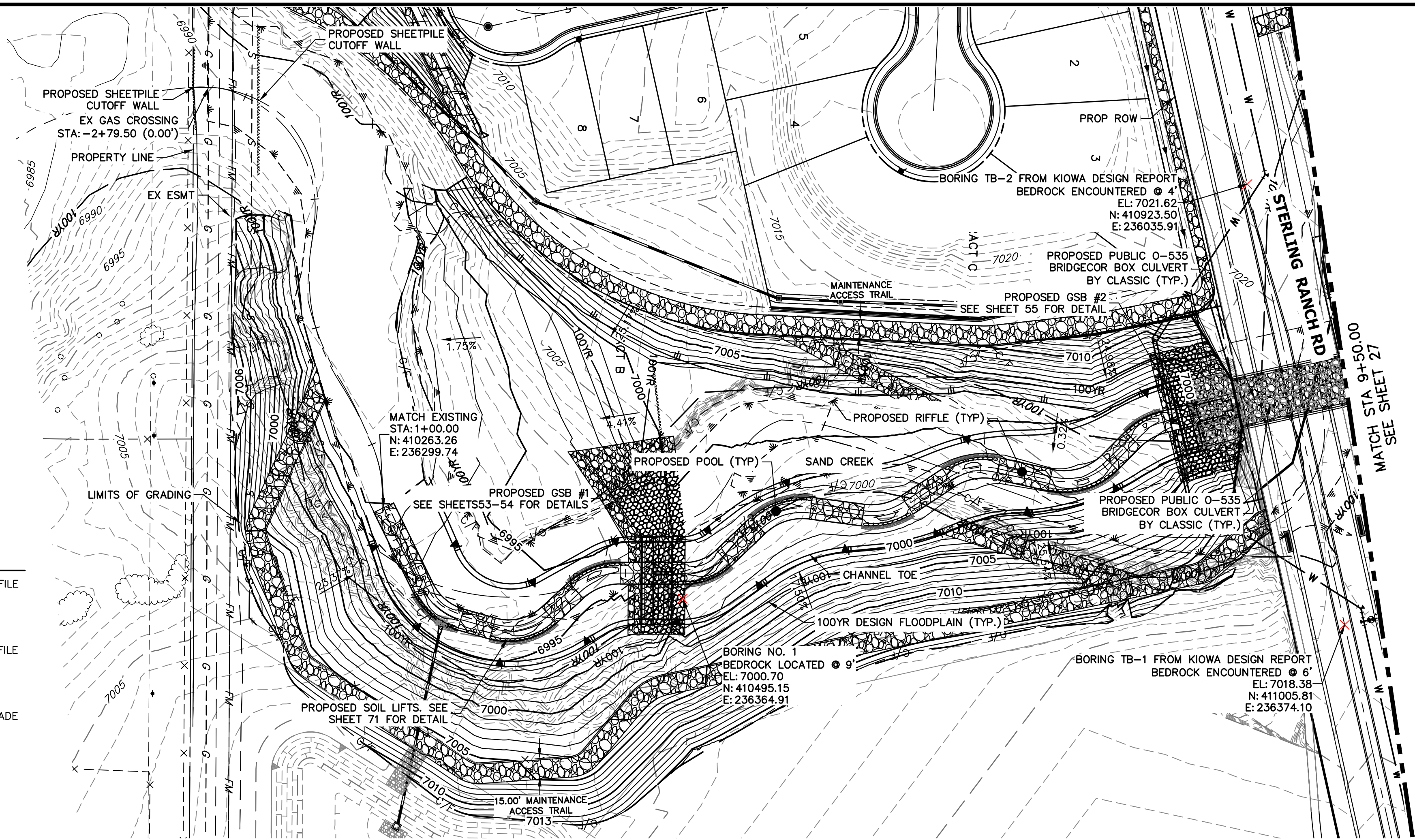
No. REVISION

H-SCALE 1"=60'
 V-SCALE 1"=6'

DATE 7/18/23
 DESIGNED BY DJV
 DRAWN BY NEO
 CHECKED BY

SAND CREEK RESTORATION
CHANNEL PLAN & PROFILE

SHEET 20 OF 121
 JOB NO. 25188.04



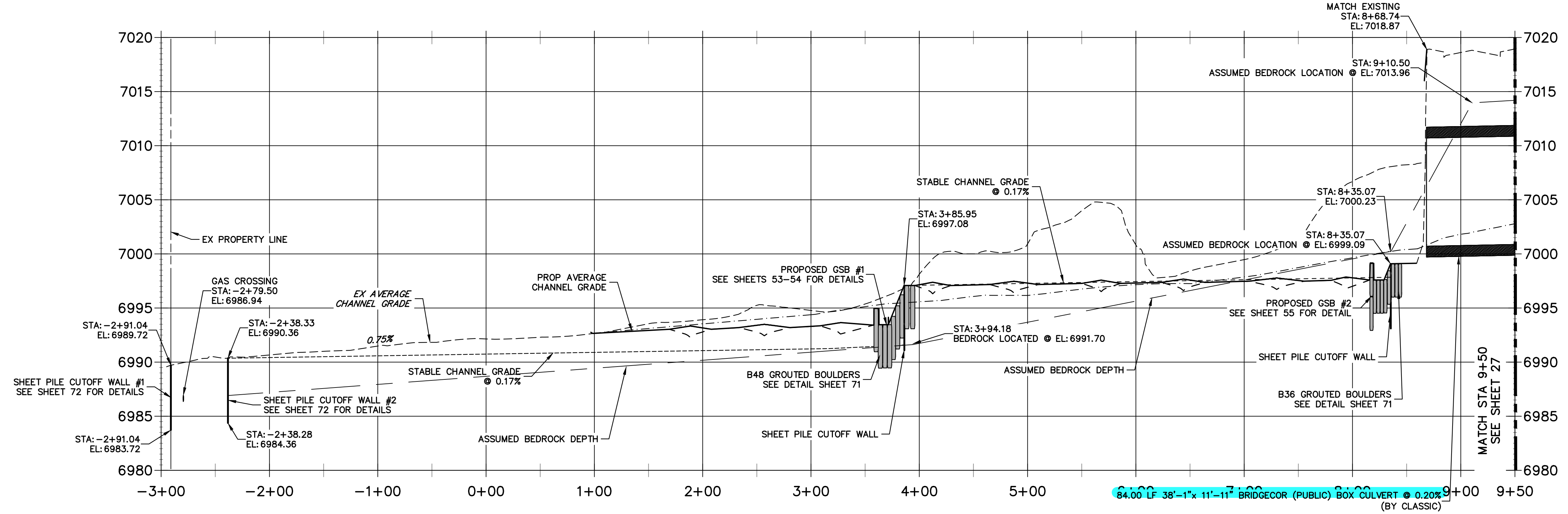
LEGEND

---	FINISHED GRADE PROFILE
○	CHANNEL
- - -	THALWEG PROFILE
---	EXISTING GRADE PROFILE
○	EXISTING CHANNEL
- - -	EXISTING THALWEG PROFILE
---	STABLE CHANNEL GRADE PROFILE
---	ASSUMED BEDROCK LOCATION PROFILE

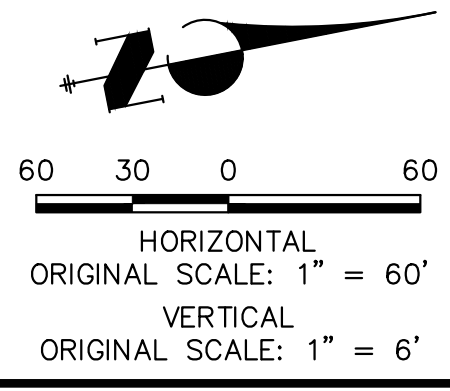
- BENCHMARK**
1. THE TOP OF AN ALUMINUM SURVEYORS CAP, STAMPED "9853", AT THE SOUTHEAST BOUNDARY CORNER OF BARBARICK SUBDIVISION
NORTHING = 411416.273
EASTING = 235167.071
ELEVATION = 7023.42
 2. THE TOP OF A RED PLASTIC SURVEYORS CAP, ILLEGIBLE, AT THE NORTHWEST BOUNDARY CORNER OF PANNEE RANCHEROS SUBDIVISION
NORTHING = 410095.404
EASTING = 235052.131
ELEVATION = 7000.40
 3. THE TOP OF A RED PLASTIC SURVEYORS CAP, STAMPED "381417", AT THE SOUTHWEST BOUNDARY CORNER OF BARBARICK SUBDIVISION
NORTHING = 411399.962
EASTING = 233849.817
ELEVATION = 7030.82

BASIS OF BEARINGS
THE SOUTH LINE OF THE SOUTHWEST QUARTER OF SECTION 34, TOWNSHIP 12 SOUTH, RANGE 65 WEST OF THE 6TH P.M. AS MONUMENTED AT THE SOUTHWEST CORNER OF SAID BY A 2-1/2" ALUMINUM CAP STAMPED "LS 11624" AND AT THE SOUTHEAST CORNER OF SAID SOUTHWEST QUARTER BY A 2-1/2" ALUMINUM CAP STAMPED "LS 11624", SAID LINE BEARS N89°14'14"E, A DISTANCE OF 2,722.69 FEET.

**SAND CREEK -STABLE CHANNEL GRADE BANKFULL PROFILE 1
STA -3+00.00 TO 9+50.00**



- NOTE**
1. NO GRADING OR CONSTRUCTION ACTIVITIES ON PRIVATE PROPERTY
 2. DRIVE SHEET PILE THROUGH BEDROCK OR MINIMUM OF 6 FEET.

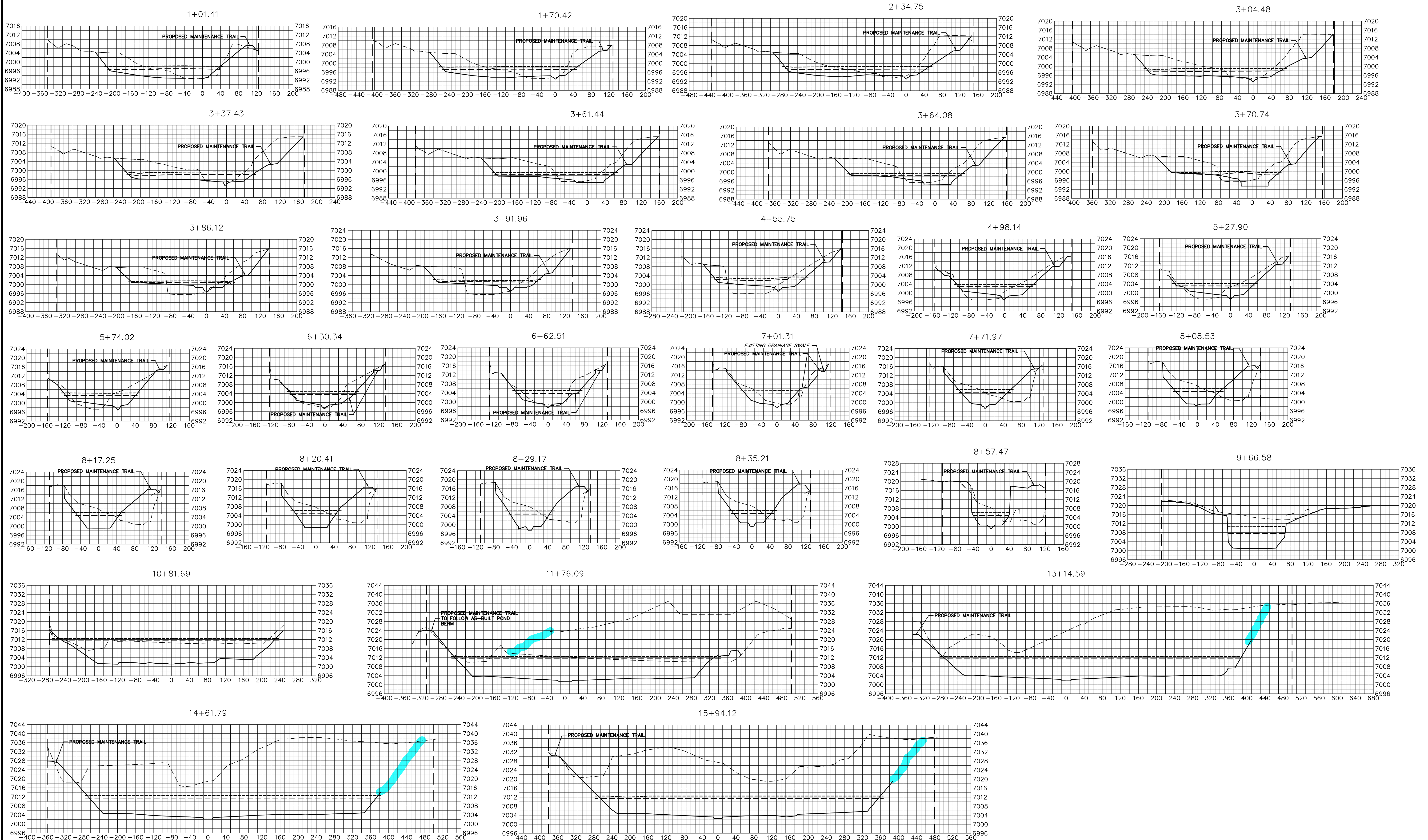


ENGINEER'S STATEMENT
PREPARED UNDER MY DIRECT SUPERVISION

Mike Bramlett
MICHAEL A. BRAMLETT
32314
7/18/23
DATE

MIKE A. BRAMLETT, P.E.
COLORADO P.E. 32314
FOR AND ON BEHALF OF JR ENGINEERING

PREPARED FOR SR LAND, LLC 20 BOULDER CRESCENT 2ND FLOOR COLORADO SPRINGS, CO 80903 JAMES F. MORLEY (719) 419-3024	UNTIL SUCH TIME AS THESE DRAWINGS ARE APPROVED BY THE APPROPRIATE REVIEWING AGENCIES, JR ENGINEERING APPROVES THEIR USE. REVISES DESIGNATED BY WRITTEN AUTHORIZATION.
SAND CREEK RESTORATION CHANNEL STABLE GRADE PLAN AND PROFILE	SHEET 26 OF 121 JOB NO. 25188.04

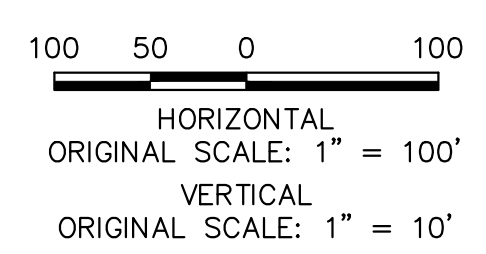


BENCHMARK

- THE TOP OF AN ALUMINUM SURVEYORS CAP, STAMPED "9853", AT THE SOUTHWEST BOUNDARY CORNER OF BARBARICK SUBDIVISION
NORTHING = 411416.273
EASTING = 235167.071
ELEVATION = 7023.42
- THE TOP OF A RED PLASTIC SURVEYORS CAP, ILLEGIBLE, AT THE NORTHWEST BOUNDARY CORNER OF PAWNEE RANCHEROS SUBDIVISION
NORTHING = 410095.404
EASTING = 235052.131
ELEVATION = 7000.40
- THE TOP OF A RED PLASTIC SURVEYORS CAP, STAMPED "38141", AT THE SOUTHWEST BOUNDARY CORNER OF BARBARICK SUBDIVISION
NORTHING = 411399.962
EASTING = 233849.817
ELEVATION = 7030.82

BASIS OF BEARINGS

THE SOUTH LINE OF THE SOUTHWEST QUARTER OF SECTION 34, TOWNSHIP 12 SOUTH, RANGE 65 WEST OF THE 6TH P.M. AS MONUMENTED AT THE SOUTHWEST CORNER OF SAID BY A 2-1/2" ALUMINUM CAP STAMPED "LS 11624" AND AT THE SOUTHEAST CORNER OF SAID SOUTHWEST QUARTER BY A 2-1/2" ALUMINUM CAP STAMPED "LS 11624", SAID LINE BEARS N89°14'14"E, A DISTANCE OF 2,722.69 FEET.



LEGEND

- PROP GROUND SURFACE
- - - EX GROUND SURFACE
- 100YR FIS WSEL
- . - . 100YR DESIGN WSEL
- PROPERTY LINE



ENGINEER'S STATEMENT
 PREPARED UNDER MY DIRECT SUPERVISION
 Mike Bramlett
 MIKE A. BRAMLETT, P.E.
 COLORADO P.E. 32314
 FOR AND ON BEHALF OF JR ENGINEERING, INC.
 7/18/23

UNTIL SUCH TIME AS THESE DRAWINGS ARE APPROVED BY THE AGENCIES, JR ENGINEERING APPROVES THEIR USE DESIGNATED BY WRITTEN AUTHORIZATION.

PREPARED FOR
SR LAND, LLC
 20 BOULDER CRESCENT
 2ND FLOOR
 COLORADO SPRINGS, CO 80903
 JAMES F. MORLEY
 (719) 419-3024

J.R. ENGINEERING
 A Westman Company
 Centennial 300-740-9888 • Colorado Springs 719-583-2583
 Fort Collins 970-491-9888 • www.jrengineering.com

BY	DATE	No.	REVISION

H-SCALE 1"=100'
 V-SCALE 1"=10'
 DATE 4/12/23
 DESIGNED BY DJV
 DRAWN BY NEO
 CHECKED BY

SAND CREEK RESTORATION
CROSS SECTIONS

SHEET 35 OF 121
 JOB NO. 25188.04

