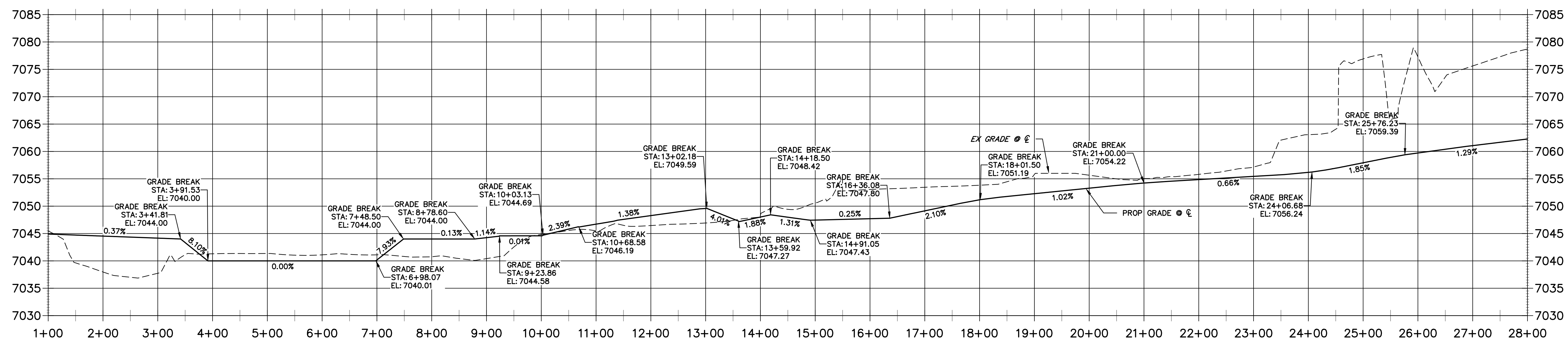


LINE	BEARING	DISTANCE
L9	S04°12'48"E	48.53'
L10	S26°54'20"W	51.80'
L11	S16°26'06"E	77.36'
L12	S37°46'47"E	82.58'
L13	S87°22'29"E	221.11'
L14	N01°47'20"E	64.75'
L15	N33°38'47"W	150.85'
L16	N01°15'46"E	58.58'
L17	N39°49'15"E	153.65'
L18	N09°44'33"E	195.76'
L19	N17°20'47"W	327.23'
L20	N29°16'34"W	24.89'
L21	N53°36'38"E	113.38'

CURVE	DELTA	RADIUS	LENGTH
C8	30°40'46"	162.24'	86.87'
C9	43°19'59"	180.03'	136.16'
C10	21°20'41"	65.00'	24.21'
C11	49°35'43"	110.00'	95.22'
C12	90°50'11"	50.00'	79.27'
C13	35°26'06"	115.00'	71.12'
C14	34°54'33"	115.00'	70.07'
C15	38°33'29"	95.00'	63.93'
C16	29°14'48"	107.92'	55.09'
C17	27°05'20"	105.00'	49.64'
C18	11°55'47"	686.05'	142.84'
C19	82°52'35"	100.00'	144.65'
C20	18°33'53"	235.00'	76.14'

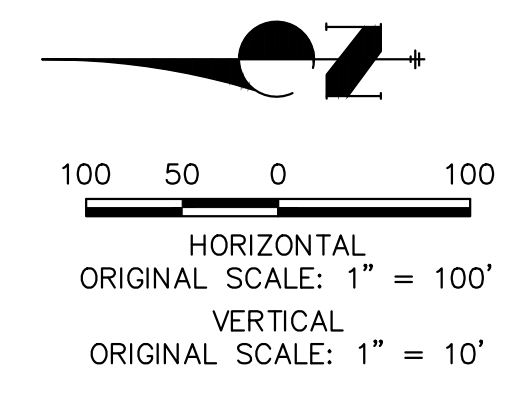
**EAST SIDE: SAND CREEK MAINTENANCE ACCESS TRAIL PROFILE REACH 2
STA 1+00.00 TO 28+00.00**



- BENCHMARK**
1. THE TOP OF AN ALUMINUM SURVEYORS CAP, STAMPED "9853", AT THE SOUTHEAST BOUNDARY CORNER OF BARBARICK SUBDIVISION
NORTHING = 411416.273
EASTING = 235167.071
ELEVATION = 7023.42
 2. THE TOP OF A RED PLASTIC SURVEYORS CAP, ILLEGIBLE, AT THE NORTHWEST BOUNDARY CORNER OF PAWNEE RANCHEROS SUBDIVISION
NORTHING = 410095.404
EASTING = 235052.131
ELEVATION = 7000.40
 3. THE TOP OF A RED PLASTIC SURVEYORS CAP, STAMPED "38141", AT THE SOUTHWEST BOUNDARY CORNER OF BARBARICK SUBDIVISION
NORTHING = 411399.962
EASTING = 233849.817
ELEVATION = 7030.62

BASIS OF BEARINGS
THE SOUTH LINE OF THE SOUTHWEST QUARTER OF SECTION 34, TOWNSHIP 12 SOUTH, RANGE 65 WEST OF THE 6TH P.M. AS MONUMENTED AT THE SOUTHWEST CORNER OF SAID BY A 2-1/2" ALUMINUM CAP STAMPED "LS 11624" AND AT THE SOUTHEAST CORNER OF SAID SOUTHWEST QUARTER BY A 2-1/2" ALUMINUM CAP STAMPED "LS 11624". SAID LINE BEARS N89°14'14"E, A DISTANCE OF 2,722.69 FEET.

- NOTES:**
1. STEEPEST ALLOWABLE GRADE IS 12%.
 2. MAINTENANCE ACCESS TRAILS WITH SLOPES GREATER THAN 10% ARTICULATED CONCRETE WILL BE USED.



ENGINEER'S STATEMENT
PREPARED UNDER MY DIRECT SUPERVISION

Mike Bramlett
MIKE A. BRAMLETT, P.E.
COLORADO P.E. 32314
FOR AND ON BEHALF OF JR ENGINEERING, INC.

32314 11/20/23

UNTIL SUCH TIME AS THESE DRAWINGS ARE APPROVED BY THE APPROPRIATE REVIEWING AGENCIES, JR ENGINEERING APPROVES THEIR USE AS DESIGNATED BY WRITTEN AUTHORIZATION.

PREPARED FOR
SR LAND, LLC
20 BOULDER CRESCENT
2ND FLOOR
COLORADO SPRINGS, CO 80903
JAMES F. MORLEY
(719) 419-3024

J.R. ENGINEERING
A Westman Company
Central 303-740-9888 • Colorado Springs 719-583-2593
Fort Collins 970-491-9888 • www.jrengineering.com

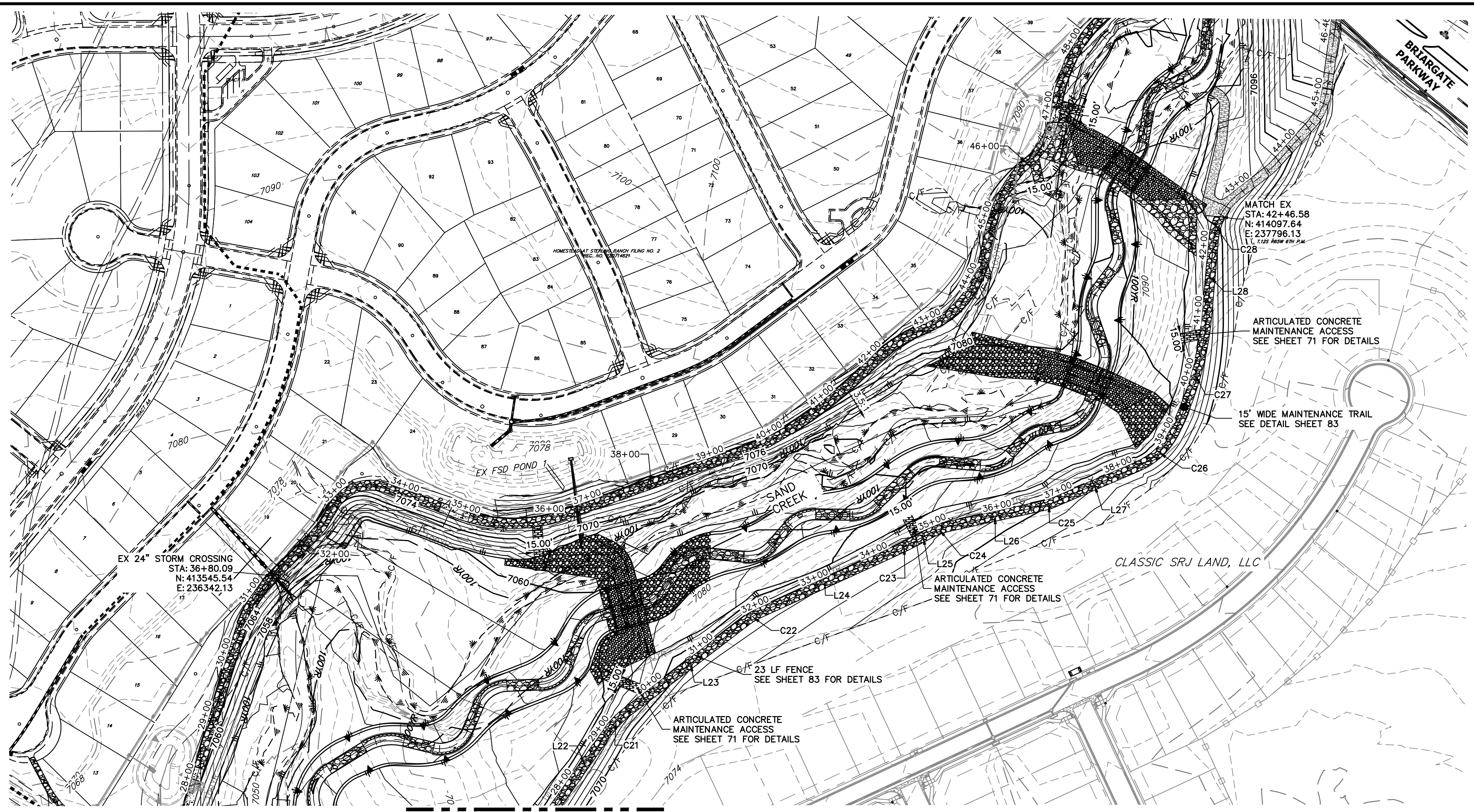
BY: _____ DATE: _____

No. REVISION

H-SCALE	V-SCALE	DATE	DESIGNED BY	DRAWN BY	CHECKED BY
1"=100'	1"=10'	11/20/23	NEO	NEO	

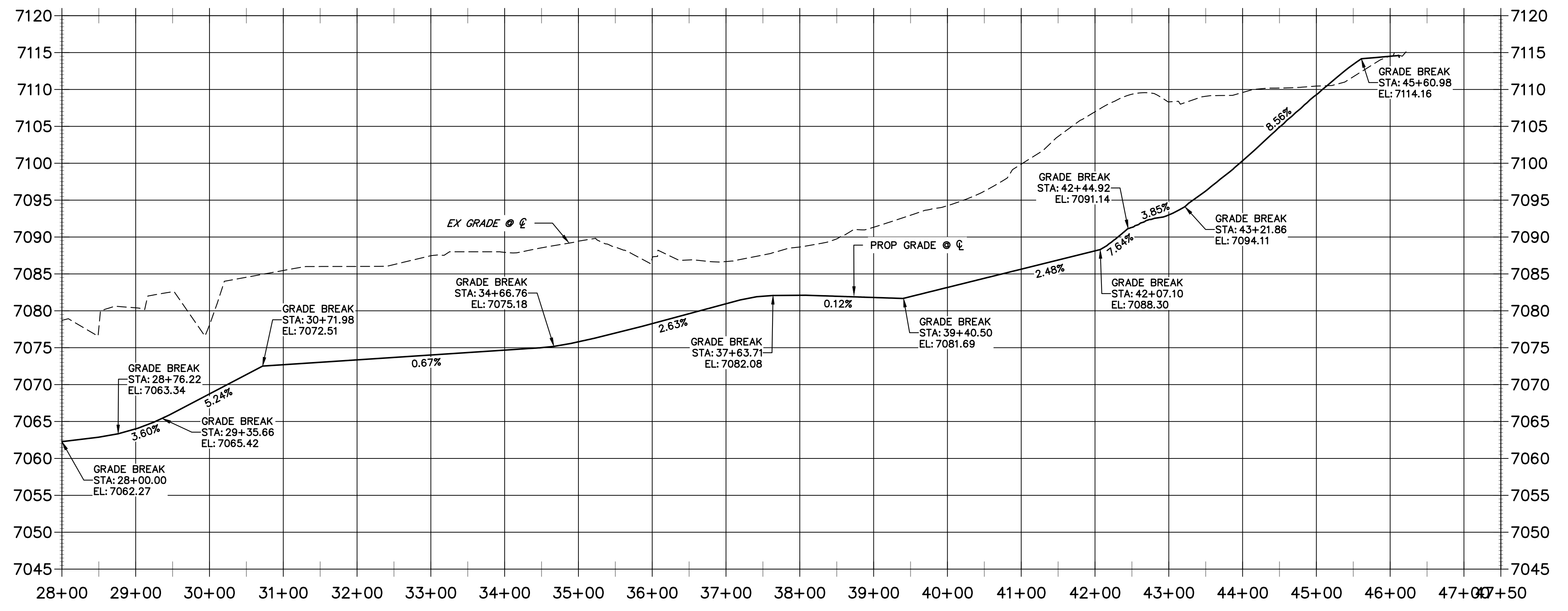
SAND CREEK RESTORATION
MAINTENANCE ACCESS PLAN & PROFILE

SHEET 84 OF 121
JOB NO. 25188.04



MATCH STA 28+00
SEE SHEET 84

**EAST SIDE: SAND CREEK MAINTENANCE ACCESS TRAIL PROFILE REACH 2 (1)
STA 28+00.00 TO 47+50.00**



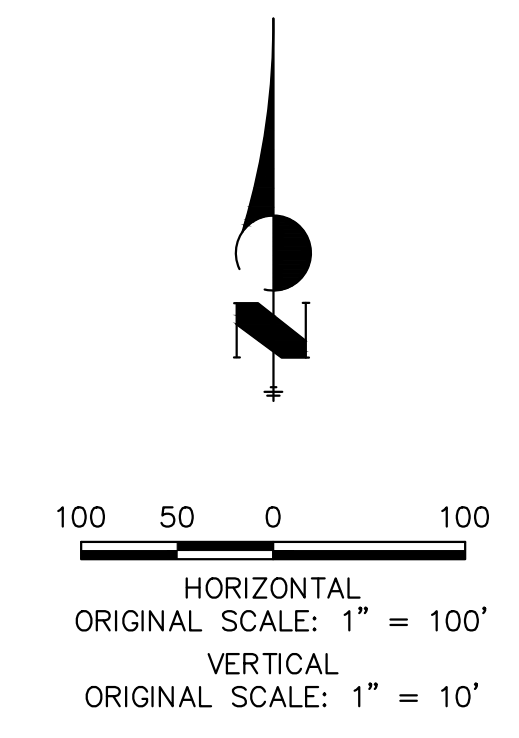
LINE TABLE		
LINE	BEARING	DISTANCE
L22	N35°02'46"E	136.97'
L23	N52°34'53"E	233.05'
L24	N65°29'36"E	225.86'
L25	N62°08'58"E	23.44'
L26	N77°34'21"E	153.82'
L27	N66°49'31"E	144.95'
L28	N05°00'27"E	115.78'

CURVE TABLE			
CURVE	DELTA	RADIUS	LENGTH
C21	17°32'07"	140.00'	42.85'
C22	12°54'44"	90.00'	20.28'
C23	3°20'38"	720.00'	42.02'
C24	15°30'13"	114.41'	30.96'
C25	10°44'50"	40.00'	7.50'
C26	39°36'05"	112.28'	77.61'
C27	21°26'03"	505.01'	188.92'
C28	21°06'26"	99.81'	36.77'

- NOTES:**
1. STEEPEST ALLOWABLE GRADE IS 12%.
 2. MAINTENANCE ACCESS TRAILS WITH SLOPES GREATER THAN 10% ARTICULATED CONCRETE WILL BE USED.

- BENCHMARK**
1. THE TOP OF AN ALUMINUM SURVEYORS CAP, STAMPED "9853", AT THE SOUTHEAST BOUNDARY CORNER OF BARBARICK SUBDIVISION
NORTHING = 411416.273
EASTING = 235167.071
ELEVATION = 7023.42
 2. THE TOP OF A RED PLASTIC SURVEYORS CAP, ILLEGIBLE, AT THE NORTHWEST BOUNDARY CORNER OF PAWNEE RANCHEROS SUBDIVISION
NORTHING = 410095.404
EASTING = 235052.131
ELEVATION = 7000.40
 3. THE TOP OF A RED PLASTIC SURVEYORS CAP, STAMPED "38141", AT THE SOUTHWEST BOUNDARY CORNER OF BARBARICK SUBDIVISION
NORTHING = 411399.962
EASTING = 233949.817
ELEVATION = 7030.82

BASIS OF BEARINGS
THE SOUTH LINE OF THE SOUTHWEST QUARTER OF SECTION 34, TOWNSHIP 12 SOUTH, RANGE 65 WEST OF THE 6TH P.M. AS MONUMENTED AT THE SOUTHWEST CORNER OF SAID BY A 2-1/2" ALUMINUM CAP STAMPED "LS 11624" AND AT THE SOUTHEAST CORNER OF SAID SOUTHWEST QUARTER BY A 2-1/2" ALUMINUM CAP STAMPED "LS 11624". SAID LINE BEARS N89°14'14"E, A DISTANCE OF 2,722.69 FEET.



ENGINEER'S STATEMENT
PREPARED UNDER MY DIRECT SUPERVISION

Mike Bramlett
MIKE A. BRAMLETT, P.E.
COLORADO P.E. 32314
FOR AND ON BEHALF OF JR ENGINEERING, INC.

32314
11/20/23



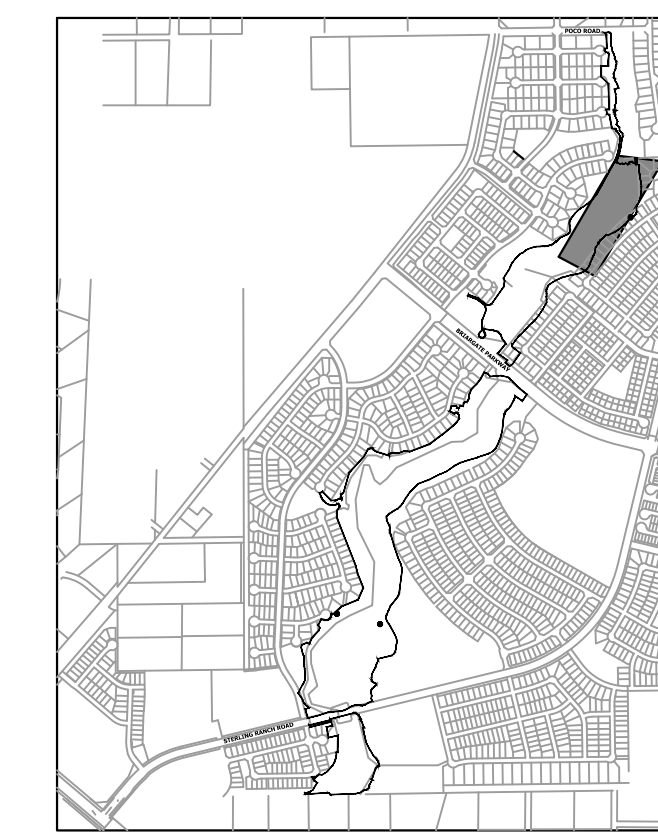
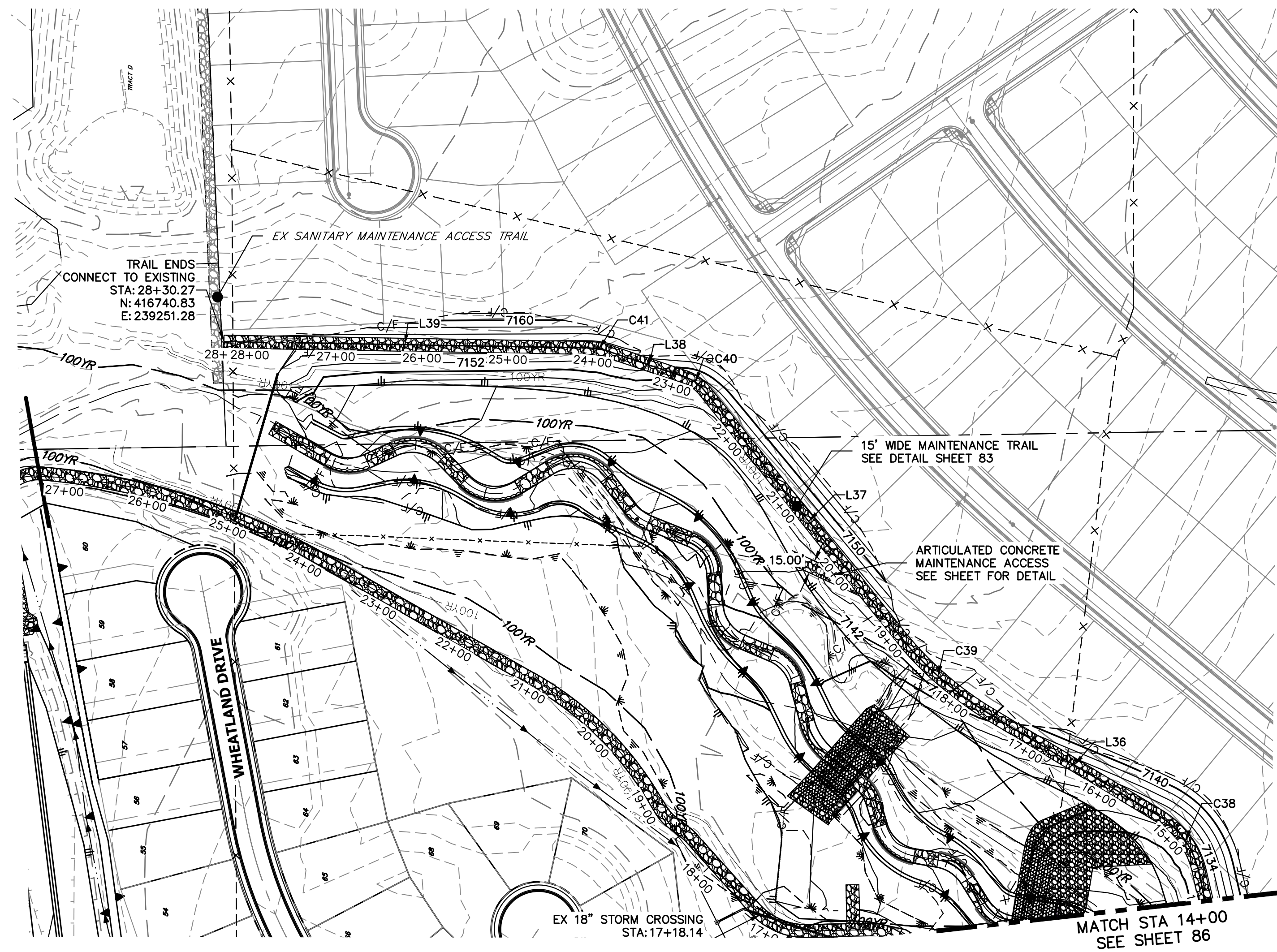
KEY MAP
SCALE: 1"=2000'

UNTIL SUCH TIME AS THESE DRAWINGS ARE APPROVED BY THE APPROPRIATE REVIEWING AGENCIES, JR ENGINEERING APPROVES THEIR USE AS DESIGNATED BY WRITTEN AUTHORIZATION.

PREPARED FOR
SR LAND, LLC
20 BOULDER CRESCENT
2ND FLOOR
COLORADO SPRINGS, CO 80903
JAMES F. MORLEY
(719) 419-3024

J.R. ENGINEERING
A Westman Company
Central 303-740-9888 • Colorado Springs 719-583-2583
Fort Collins 970-491-9888 • www.jrengineering.com

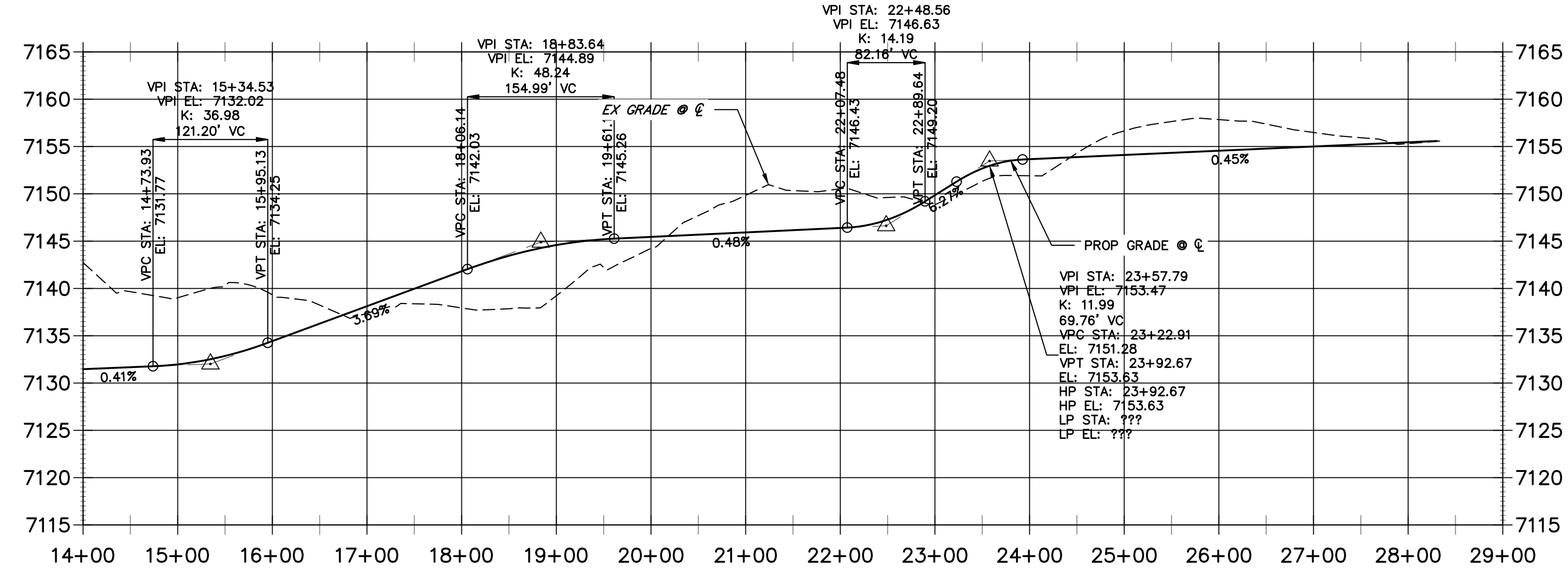
No.	REVISION	BY	DATE	H-SCALE		V-SCALE		DESIGNED BY	DRAWN BY	CHECKED BY
				1"=100'	1"=10'	DATE	NEO			
			11/20/23							



CURVE TABLE			
CURVE	DELTA	RADIUS	LENGTH
C38	46°45'59"	100.00'	81.62'
C39	21°27'49"	400.00'	149.84'
C40	30°11'53"	50.59'	26.66'
C41	17°34'04"	100.00'	30.66'

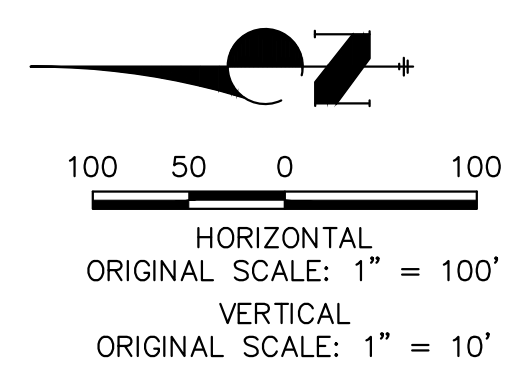
LINE TABLE		
LINE	BEARING	DISTANCE
L36	N31°01'24"E	229.41'
L37	N51°28'24"E	353.36'
L38	N18°35'32"E	91.99'
L39	N01°01'28"E	420.45'

**EAST SIDE: SAND CREEK MAINTENANCE ACCESS TRAIL PROFILE REACH 3 (2)
STA 14+00.00 TO 29+00.00**



- BENCHMARK**
- THE TOP OF AN ALUMINUM SURVEYORS CAP, STAMPED "9853", AT THE SOUTHEAST BOUNDARY CORNER OF BARBARICK SUBDIVISION
NORTHING = 411416.273
EASTING = 235167.071
ELEVATION = 7023.42
 - THE TOP OF A RED PLASTIC SURVEYORS CAP, ILLEGIBLE, AT THE NORTHWEST BOUNDARY CORNER OF PANNE RANCHEROS SUBDIVISION
NORTHING = 410095.404
EASTING = 235052.131
ELEVATION = 7000.40
 - THE TOP OF A RED PLASTIC SURVEYORS CAP, STAMPED "38141", AT THE SOUTHWEST BOUNDARY CORNER OF BARBARICK SUBDIVISION
NORTHING = 411399.962
EASTING = 233849.817
ELEVATION = 7030.82

BASIS OF BEARINGS
THE SOUTH LINE OF THE SOUTHWEST QUARTER OF SECTION 34, TOWNSHIP 12 SOUTH, RANGE 65 WEST OF THE 6TH P.M. AS MONUMENTED AT THE SOUTHWEST CORNER OF SAID BY A 2-1/2" ALUMINUM CAP STAMPED "LS 11624" AND AT THE SOUTHEAST CORNER OF SAID SOUTHWEST QUARTER BY A 2-1/2" ALUMINUM CAP STAMPED "LS 11624", SAID LINE BEARS N89°14'14"E, A DISTANCE OF 2,722.69 FEET.



ENGINEER'S STATEMENT
PREPARED UNDER MY DIRECT SUPERVISION

Mike Bramlett
MIKE A. BRAMLETT, P.E.
COLORADO P.E. 32314
FOR AND ON BEHALF OF JR ENGINEERING

32314 11/20/23

UNTIL SUCH TIME AS THESE DRAWINGS ARE APPROVED BY THE APPROPRIATE REVIEWING AGENCIES, OR ENGINEERING APPROVES THEIR USE, THESE DRAWINGS ARE DESIGNATED BY WRITTEN AUTHORIZATION.

PREPARED FOR
SR LAND, LLC
20 BOULDER CRESCENT
2ND FLOOR
COLORADO SPRINGS, CO 80903
JAMES F. MORLEY
(719) 419-3024

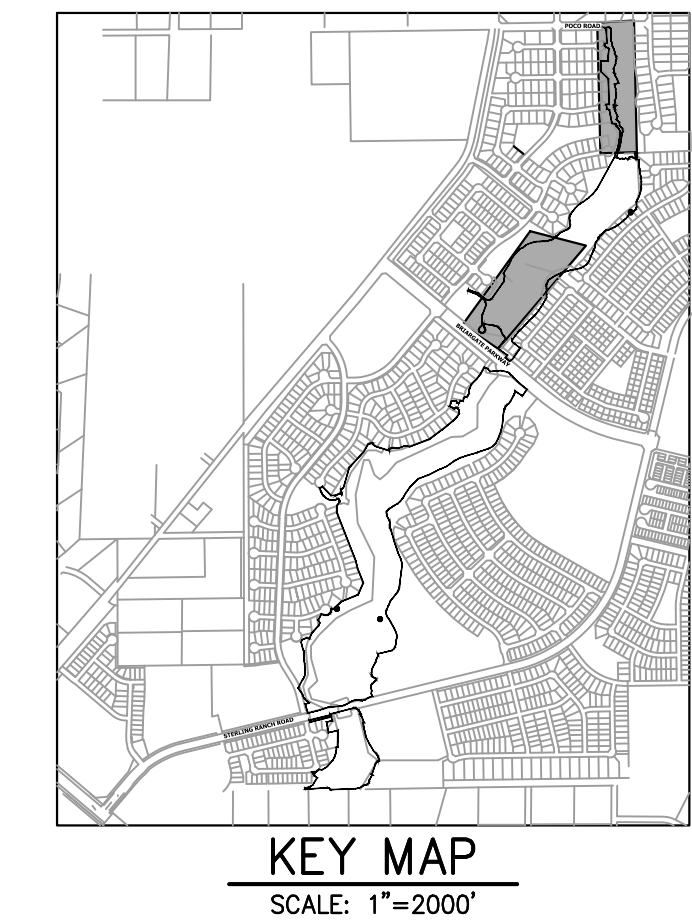
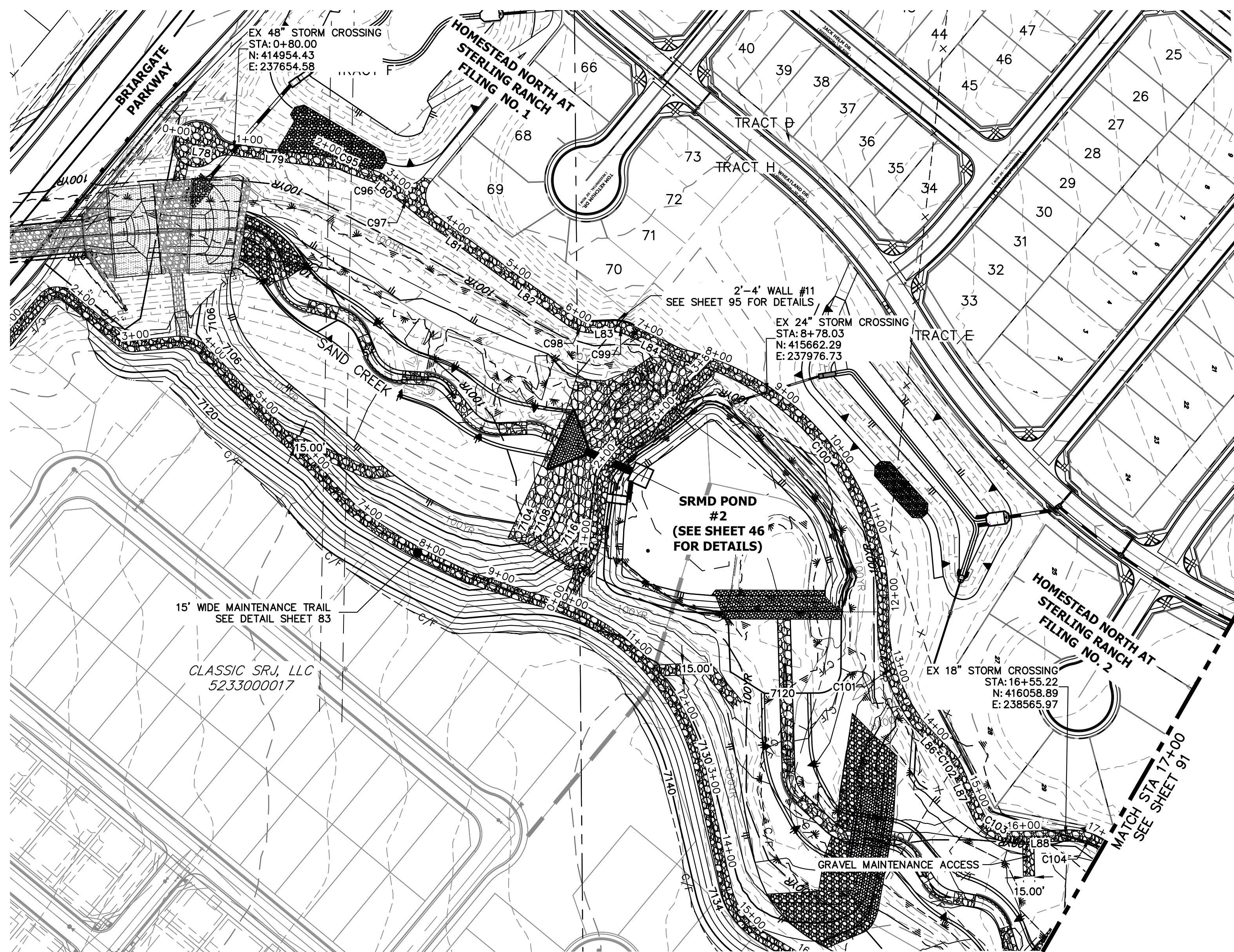
J.R. ENGINEERING
A Westman Company
Central 303-740-9888 • Colorado Springs 719-583-2583
Fort Collins 970-491-9888 • www.jrengineering.com

BY	DATE	REVISION

H-SCALE 1"=100'
V-SCALE 1"=10'
DATE 11/20/23
DESIGNED BY NEO
DRAWN BY NEO
CHECKED BY

SAND CREEK RESTORATION
MAINTENANCE ACCESS PLAN & PROFILE

SHEET 87 OF 121
JOB NO. 25188.04



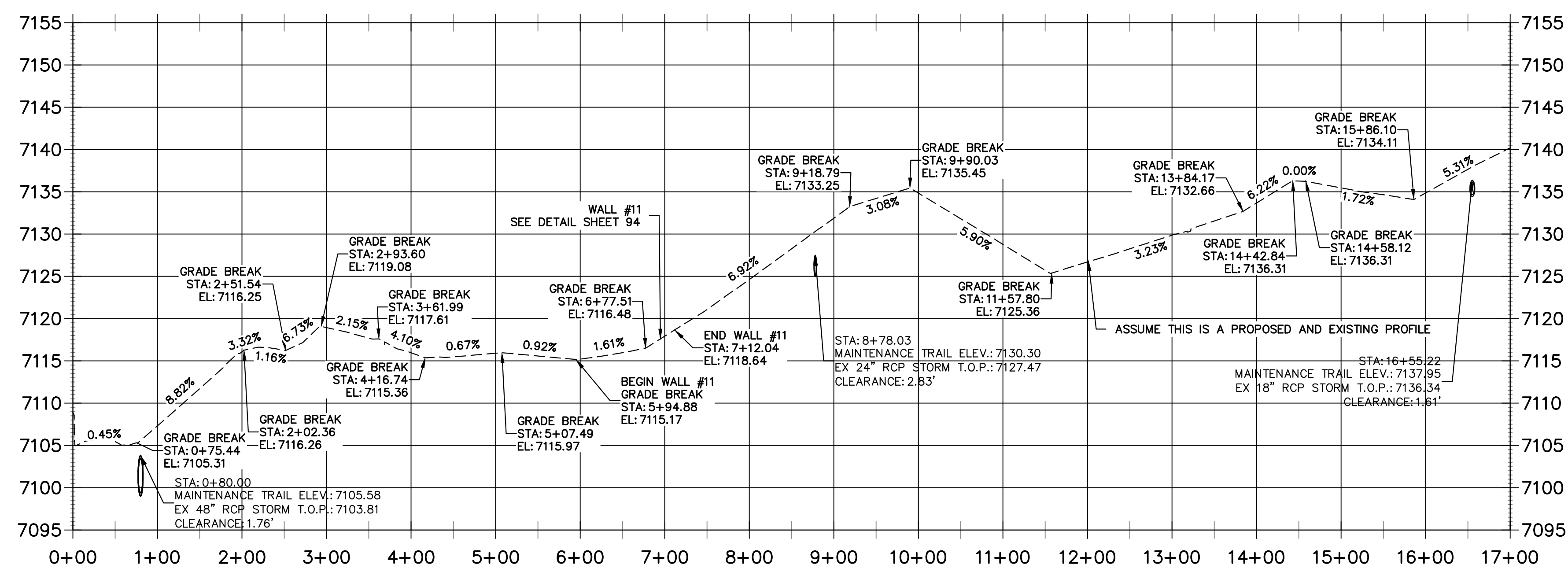
LINE TABLE

LINE	BEARING	DISTANCE
L78	S08°37'43"W	75.44'
L79	S03°01'50"W	118.27'
L80	S38°42'38"W	6.00'
L81	S36°18'51"W	113.03'
L82	S36°05'29"W	128.11'
L83	S02°34'56"E	24.28'
L84	S26°11'26"W	68.42'
L85	S16°42'01"W	4.06'
L86	S47°06'52"W	61.16'
L87	S65°16'17"W	68.61'
L88	S01°15'45"E	69.52'

CURVE TABLE

CURVE	DELTA	RADIUS	LENGTH
C95	8°40'59"	514.97'	78.04'
C96	19°10'27"	57.50'	19.24'
C97	0°58'06"	3358.10'	56.75'
C98	38°40'25"	50.00'	33.75'
C99	28°46'22"	50.00'	25.11'
C100	75°34'05"	349.70'	461.22'
C101	41°21'14"	228.66'	165.04'
C102	18°02'51"	48.50'	15.28'
C103	66°32'02"	51.50'	59.80'
C104	45°41'11"	80.36'	64.08'

**WEST SIDE: SAND CREEK REGIONAL TRAIL & MAINTENANCE ACCESS TRAIL PROFILE REACH 3
STA 0+00.00 TO 17+00.00**



- BENCHMARK**
- THE TOP OF AN ALUMINUM SURVEYORS CAP, STAMPED "9853", AT THE SOUTHEAST BOUNDARY CORNER OF BARBARICK SUBDIVISION
NORTHING = 411416.273
EASTING = 235167.071
ELEVATION = 7023.42
 - THE TOP OF A RED PLASTIC SURVEYORS CAP, ILLEGIBLE, AT THE NORTHWEST BOUNDARY CORNER OF PAWNEE RANCHEROS SUBDIVISION
NORTHING = 410095.404
EASTING = 235052.131
ELEVATION = 7000.40
 - THE TOP OF A RED PLASTIC SURVEYORS CAP, STAMPED "38141", AT THE SOUTHWEST BOUNDARY CORNER OF BARBARICK SUBDIVISION
NORTHING = 411399.962
EASTING = 233849.817
ELEVATION = 7030.82

- NOTES:**
- STEEPEST ALLOWABLE GRADE IS 12%.
 - MAINTENANCE ACCESS TRAILS WITH SLOPES GREATER THAN 10% ARTICULATED CONCRETE WILL BE USED.
- BASIS OF BEARINGS**
- THE SOUTH LINE OF THE SOUTHWEST QUARTER OF SECTION 34, TOWNSHIP 12 SOUTH, RANGE 65 WEST OF THE 6TH P.M. AS MONUMENTED AT THE SOUTHWEST CORNER OF SAID BY A 2-1/2" ALUMINUM CAP STAMPED "LS 11624" AND AT THE SOUTHEAST CORNER OF SAID SOUTHWEST QUARTER BY A 2-1/2" ALUMINUM CAP STAMPED "LS 11624", SAID LINE BEARS N89°14'14"E, A DISTANCE OF 2,722.69 FEET.

ENGINEER'S STATEMENT
PREPARED UNDER MY DIRECT SUPERVISION

Mike Bramlett
MIKE A. BRAMLETT, P.E.
COLORADO P.E. 32314
FOR AND ON BEHALF OF JR ENGINEERING

DATE: 11/20/23

811
Know what's below.
Call before you dig.

UNTIL SUCH TIME AS THESE DRAWINGS ARE APPROVED BY THE APPROPRIATE REVIEWING AGENCIES, JR ENGINEERING APPROVES THEIR USE DESIGNATED BY WRITTEN AUTHORIZATION.

PREPARED FOR
SR LAND, LLC
20 BOULDER CRESCENT
2ND FLOOR
COLORADO SPRINGS, CO 80903
JAMES F. MORLEY
(719) 419-3024

J.R. ENGINEERING
A Westman Company
Central 303-740-9888 • Colorado Springs 719-583-2583
Fort Collins 970-491-9888 • www.jrengineering.com

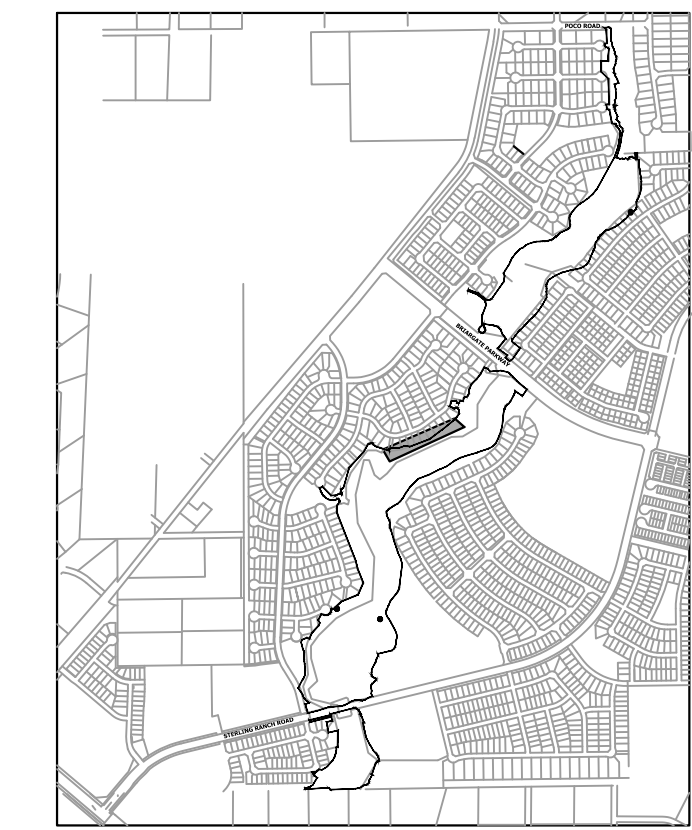
BY: _____ DATE: _____

NO. REVISION: _____

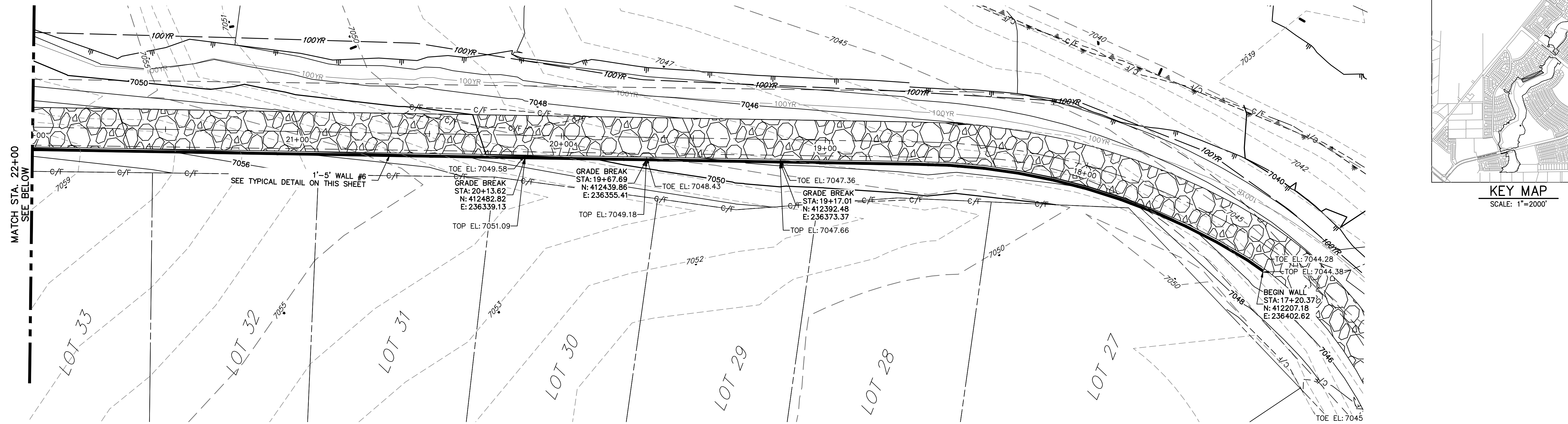
H-SCALE 1"=100'
V-SCALE 1"=10'
DATE 11/20/23
DESIGNED BY NEO
DRAWN BY NEO
CHECKED BY _____

SAND CREEK RESTORATION
MAINTENANCE ACCESS PLAN & PROFILE

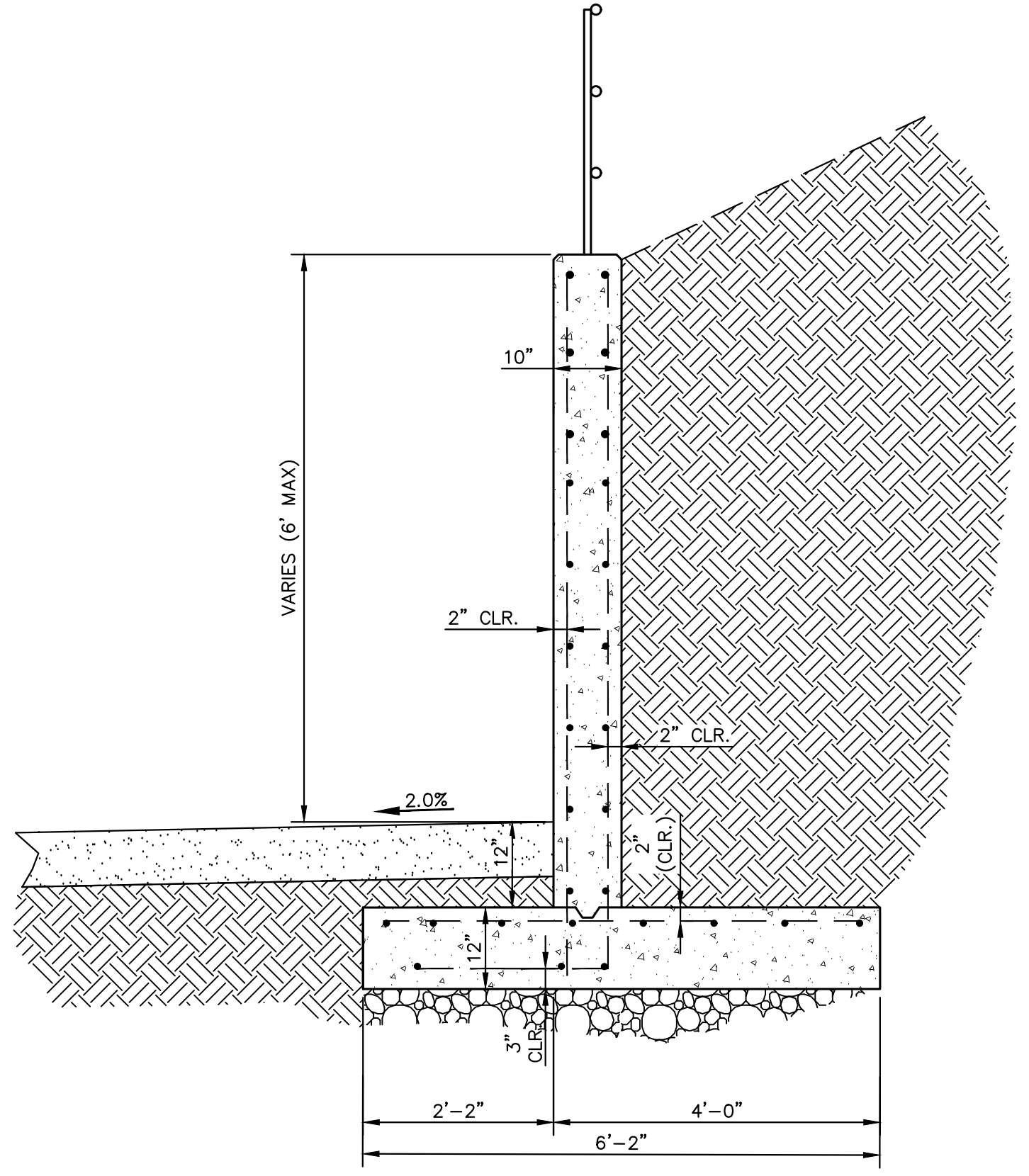
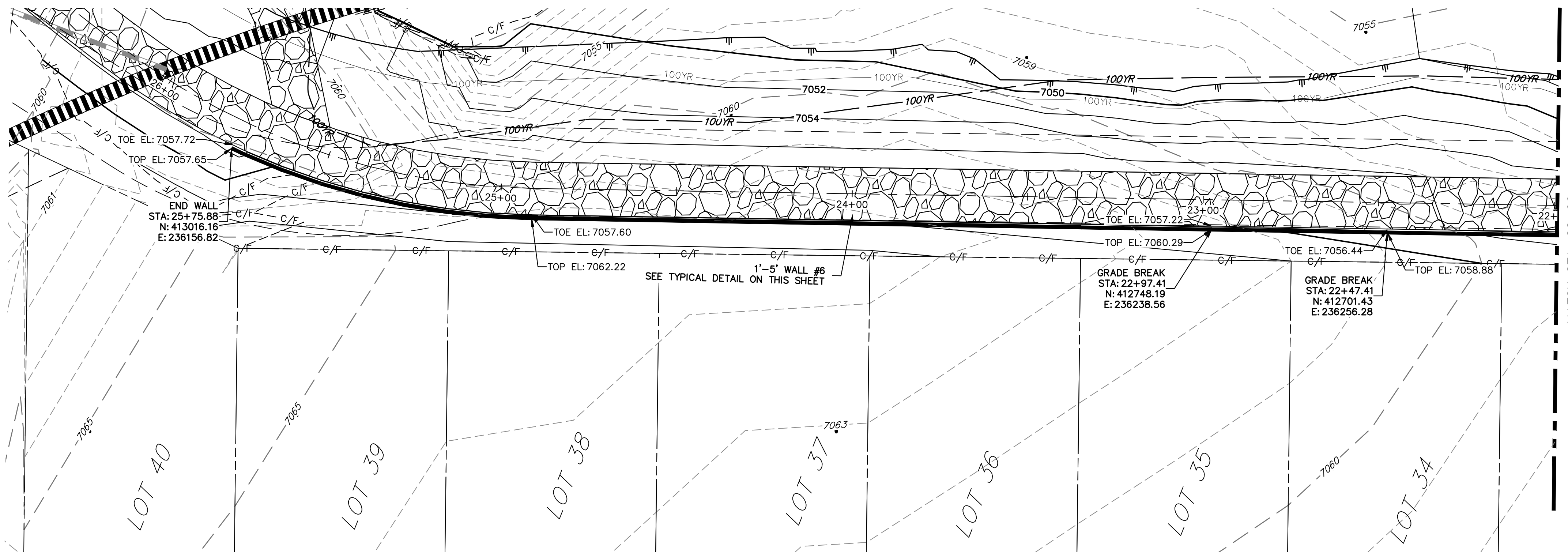
SHEET 90 OF 121
JOB NO. 25188.04



KEY MAP
SCALE: 1"=2000'



MAINTENANCE TRAIL WALL #6

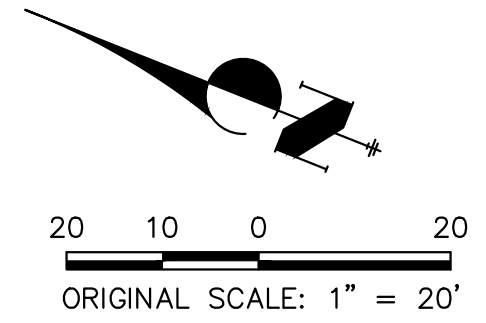


TYPICAL WALL DETAIL
SCALE: NTS

- BENCHMARK**
1. THE TOP OF AN ALUMINUM SURVEYORS CAP, STAMPED "5853", AT THE SOUTHEAST BOUNDARY CORNER OF BARBARICK SUBDIVISION
NORTHING = 411416.273
EASTING = 235167.071
ELEVATION = 7023.42
 2. THE TOP OF A RED PLASTIC SURVEYORS CAP, ILLEGIBLE, AT THE NORTHWEST BOUNDARY CORNER OF PANTEE RANCHEROS SUBDIVISION
NORTHING = 410095.404
EASTING = 235052.131
ELEVATION = 7000.40
 3. THE TOP OF A RED PLASTIC SURVEYORS CAP, STAMPED "38141", AT THE SOUTHWEST BOUNDARY CORNER OF BARBARICK SUBDIVISION
NORTHING = 411399.962
EASTING = 233849.817
ELEVATION = 7030.82

- NOTES:**
1. STEEPEST ALLOWABLE GRADE IS 12%.
 2. MAINTENANCE ACCESS TRAILS WITH SLOPES GREATER THAN 10% ARTICULATED CONCRETE WILL BE USED.

BASIS OF BEARINGS
THE SOUTH LINE OF THE SOUTHWEST QUARTER OF SECTION 34, TOWNSHIP 12 SOUTH, RANGE 65 WEST OF THE 6TH P.M. AS MONUMENTED AT THE SOUTHWEST CORNER OF SAID BY A 2-1/2" ALUMINUM CAP STAMPED "LS 11624" AND AT THE SOUTHEAST CORNER OF SAID SOUTHWEST QUARTER BY A 2-1/2" ALUMINUM CAP STAMPED "LS 11624", SAID LINE BEARS N89°14'14"E, A DISTANCE OF 2,722.69 FEET.



811
Know what's below.
Call before you dig.

ENGINEER'S STATEMENT
PREPARED UNDER MY DIRECT SUPERVISION

Mike Bramlett
MIKE A. BRAMLETT, P.E.
32314
11/20/23

MIKE A. BRAMLETT, P.E.
COLORADO P.E. 32314
FOR AND ON BEHALF OF JR ENGINEERING

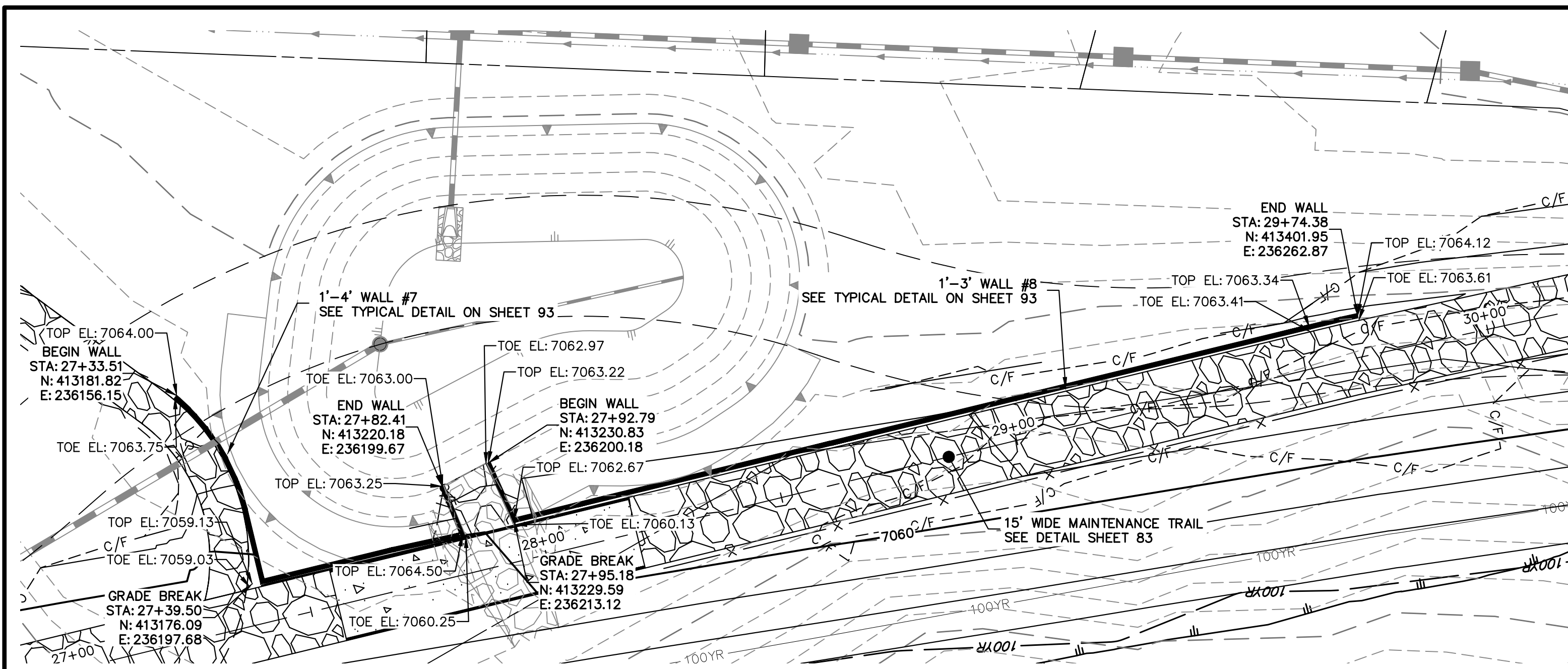
SAND CREEK RESTORATION MAINTENANCE ACCESS PLAN & PROFILE	BY	DATE			
	No.	REVISION			
	H-SCALE	1"=20'	N/A		
	V-SCALE				
	DATE	11/20/23	DESIGNED BY	NEO	
	DRAWN BY		CHECKED BY	NEO	
	SHEET	93	OF	121	
	JOB NO.	25188.04			

J.R. ENGINEERING
A Westman Company

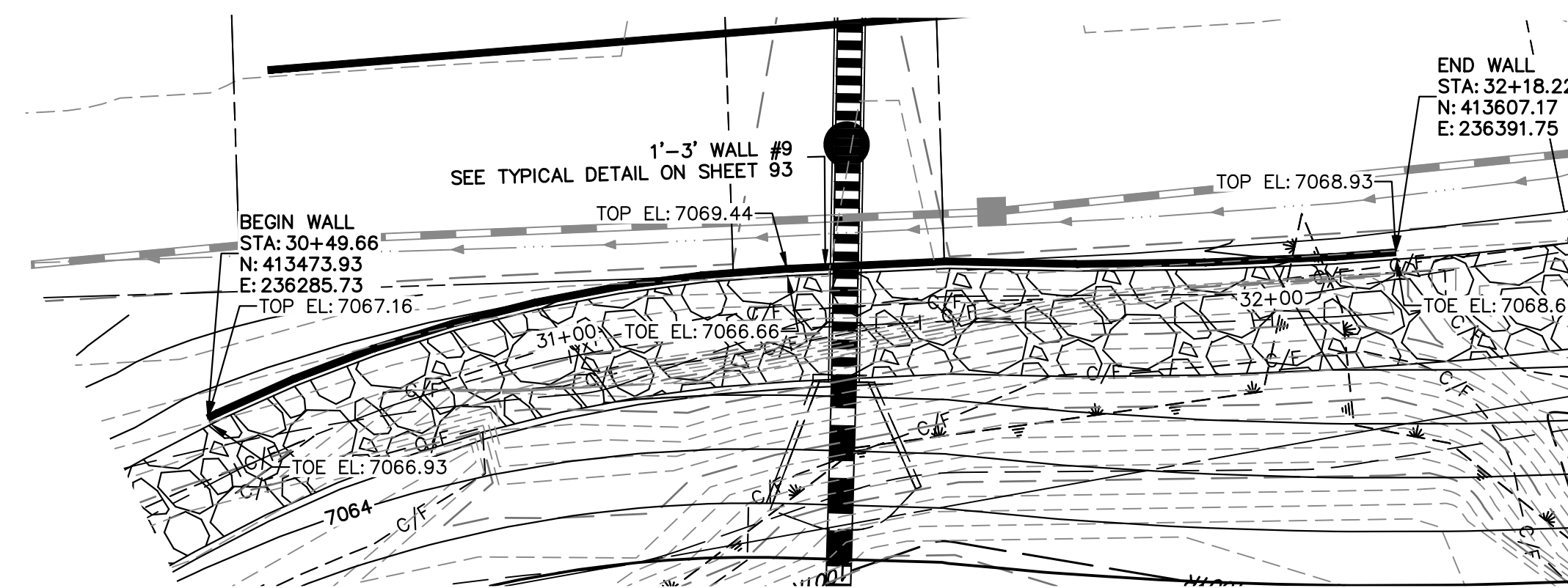
Central 303-740-9888 • Colorado Springs 719-583-2583
Fort Collins 970-491-9888 • www.jrengineering.com

PREPARED FOR
SR LAND, LLC
20 BOULDER CRESCENT
2ND FLOOR
COLORADO SPRINGS, CO 80903
JAMES F. MORLEY
(719) 419-3024

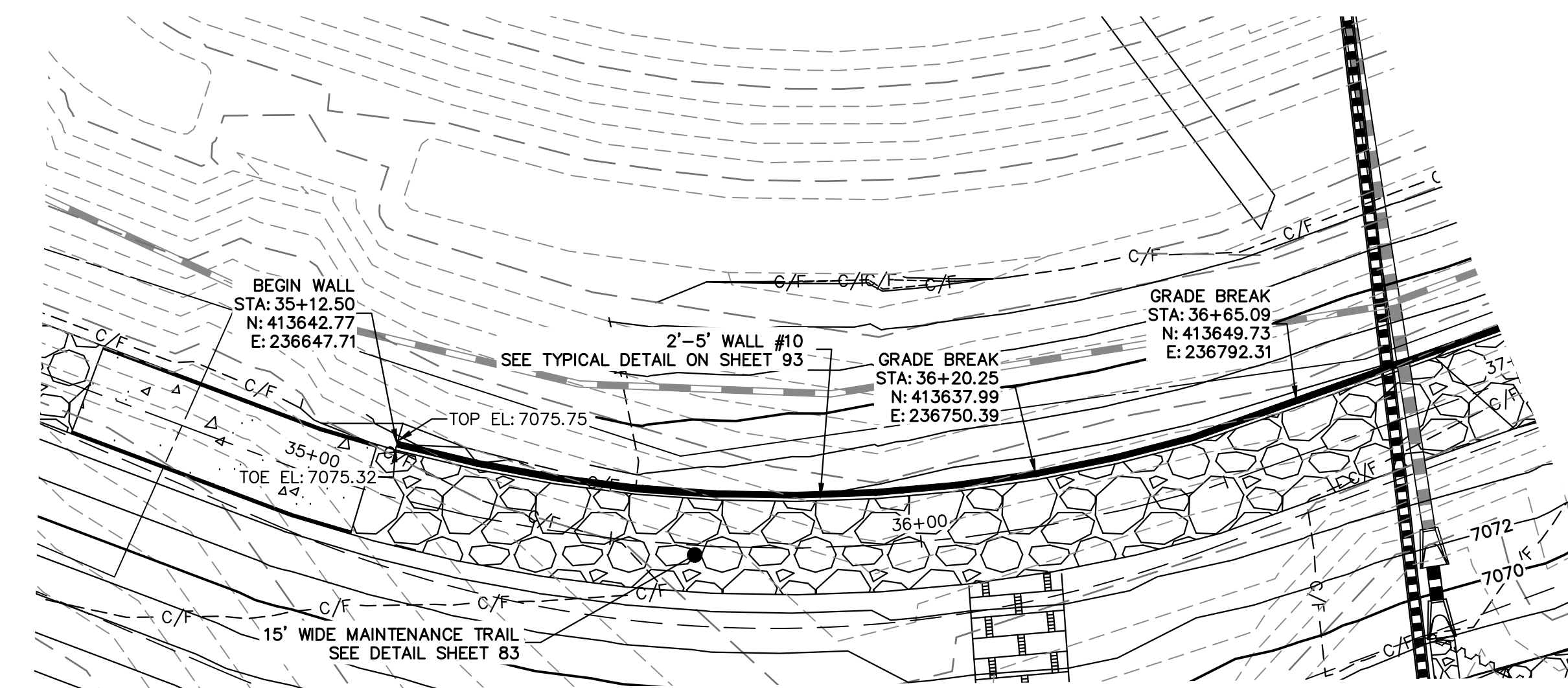
UNTIL SUCH TIME AS THESE DRAWINGS ARE APPROVED BY THE APPROPRIATE REVIEWING AGENCIES, OR ENGINEERING APPROVES THEIR USE, THESE DRAWINGS ARE DESIGNATED BY WRITTEN AUTHORIZATION.



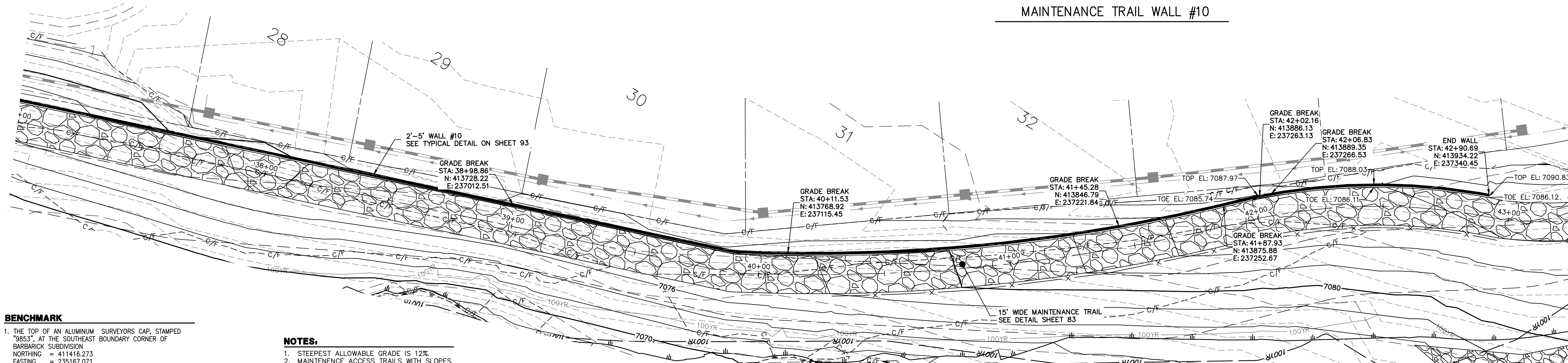
Maintenance Trail Walls #7 and #8



Maintenance Trail Wall #9



Maintenance Trail Wall #10



Maintenance Trail Wall #10

BENCHMARK

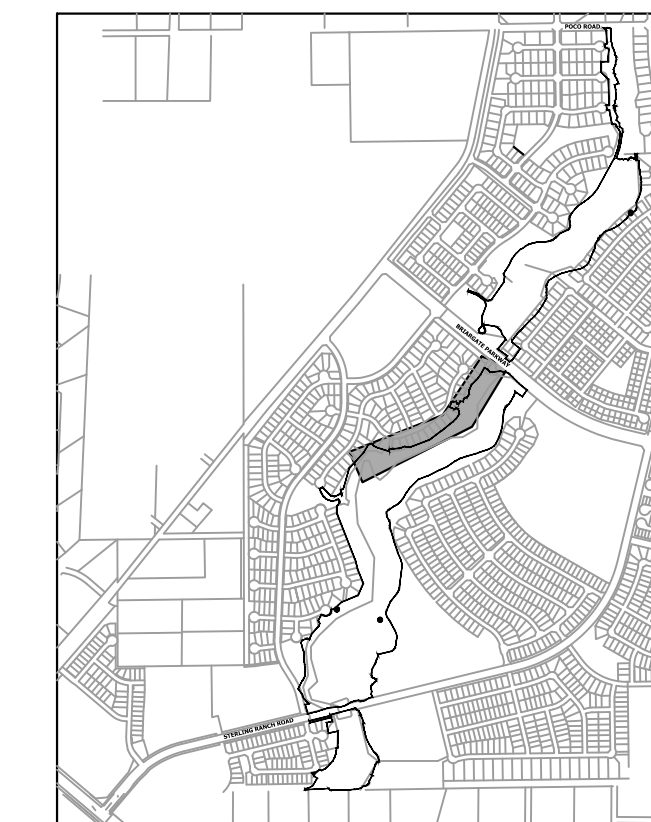
1. THE TOP OF AN ALUMINUM SURVEYORS CAP, STAMPED "9853", AT THE SOUTHEAST BOUNDARY CORNER OF BARBARICK SUBDIVISION
 NORTHING = 411416.273
 EASTING = 235167.071
 ELEVATION = 7023.42
2. THE TOP OF A RED PLASTIC SURVEYORS CAP, ILLEGIBLE, AT THE NORTHWEST BOUNDARY CORNER OF PANNEE RANCHEROS SUBDIVISION
 NORTHING = 410025.404
 EASTING = 235052.131
 ELEVATION = 7000.40
3. THE TOP OF A RED PLASTIC SURVEYORS CAP, STAMPED "38141", AT THE SOUTHWEST CORNER OF BARBARICK SUBDIVISION
 NORTHING = 411399.962
 EASTING = 233849.817
 ELEVATION = 7030.82

NOTES:

1. STEEPEST ALLOWABLE GRADE IS 12%.
2. MAINTENANCE ACCESS TRAILS WITH SLOPES GREATER THAN 10% ARTICULATED CONCRETE WILL BE USED.

BASIS OF BEARINGS

THE SOUTH LINE OF THE SOUTHWEST QUARTER OF SECTION 34, TOWNSHIP 12 SOUTH, RANGE 65 WEST OF THE 6TH P.M., AS MONUMENTED AT THE SOUTHWEST CORNER OF SAID BY A 2-1/2" ALUMINUM CAP STAMPED "LS 11624" AND AT THE SOUTHEAST CORNER OF SAID SOUTHWEST QUARTER BY A 2-1/2" ALUMINUM CAP STAMPED "LS 11624", SAID LINE BEARS N89°14'14"E, A DISTANCE OF 2,722.69 FEET.



KEY MAP
SCALE: 1"=2000'

UNTIL SUCH TIME AS THESE DRAWINGS ARE APPROVED BY THE APPROPRIATE REVIEWING AGENCIES, OR ENGINEERING APPROVES THEIR USE, THESE DRAWINGS ARE DESIGNATED BY WRITTEN AUTHORIZATION.

PREPARED FOR
SR LAND, LLC
 20 BOULDER CRESCENT
 2ND FLOOR
 COLORADO SPRINGS, CO 80903
 JAMES F. MORLEY
 (719) 419-3024

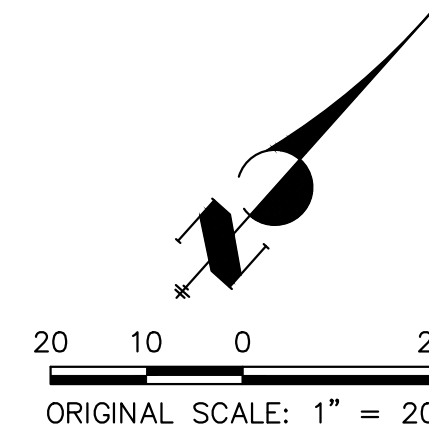
J.R. ENGINEERING
 A Westman Company

 Centennial 303-740-9888 • Colorado Springs 719-583-2583
 Fort Collins 970-491-9888 • www.jrengineering.com

BY	DATE	REVISION

H-SCALE	V-SCALE	DATE	DESIGNED BY	DRAWN BY	CHECKED BY
1"=20'	N/A	11/20/23	NEO	NEO	

SAND CREEK RESTORATION
MAINTENANCE ACCESS PLAN & PROFILE
 SHEET 94 OF 121
 JOB NO. 25188.04



ENGINEER'S STATEMENT

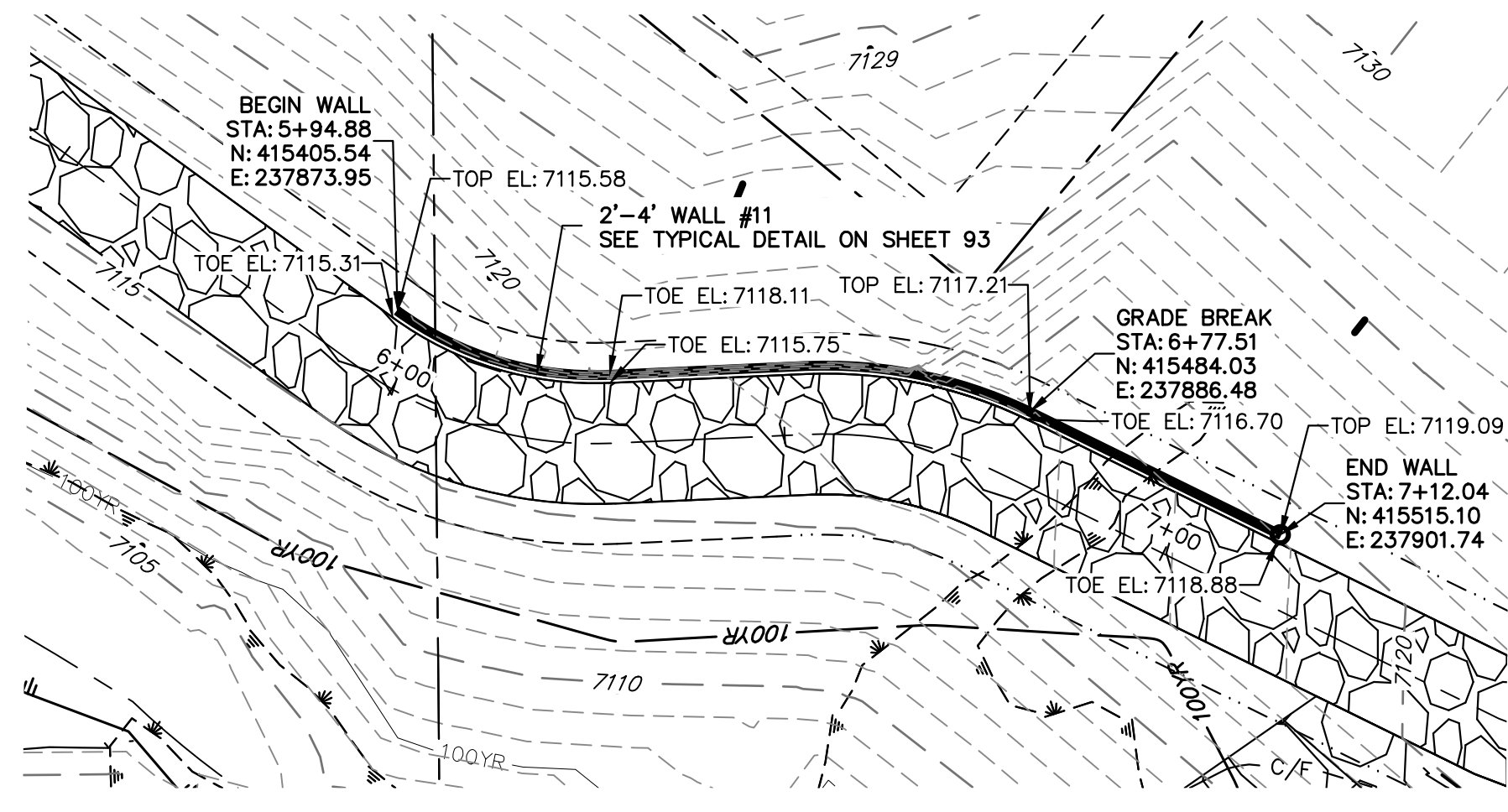
PREPARED UNDER MY DIRECT SUPERVISION

Mike Bramlett

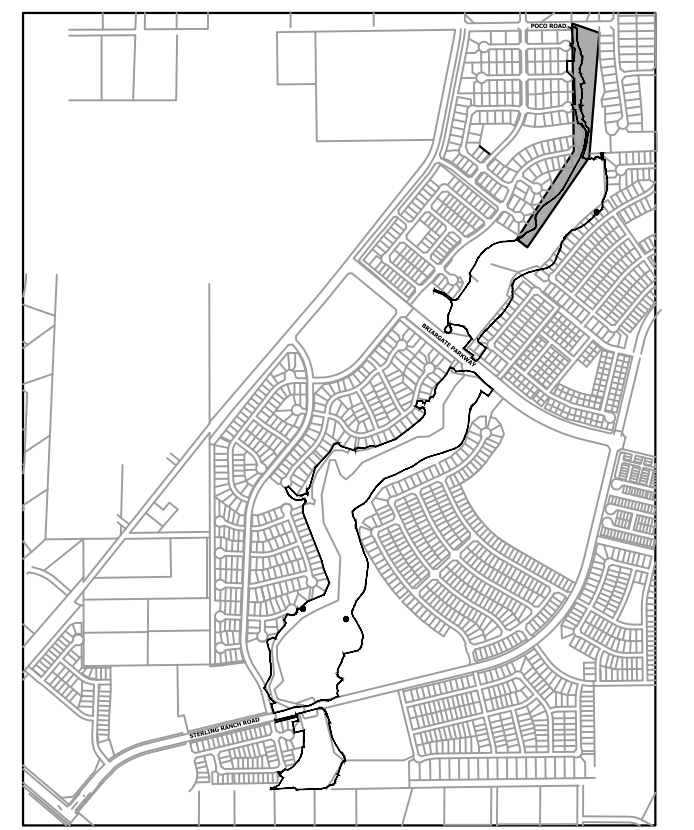


MIKE A. BRAMLETT, P.E.
 COLORADO P.E. 32314
 FOR AND ON BEHALF OF JR ENGINEERING

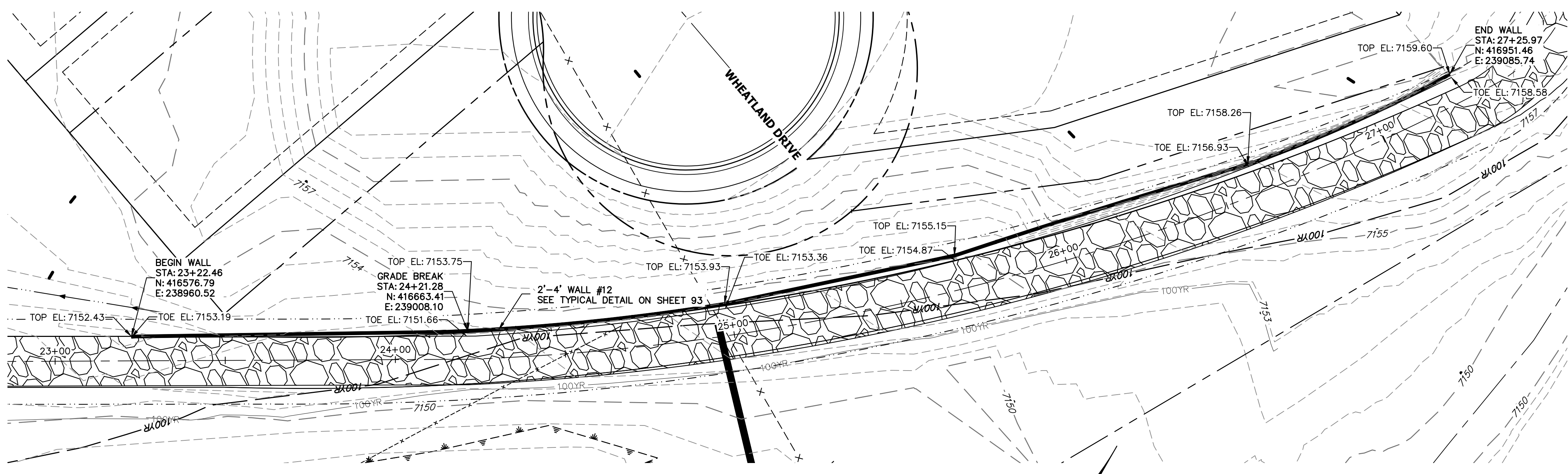
11/20/23



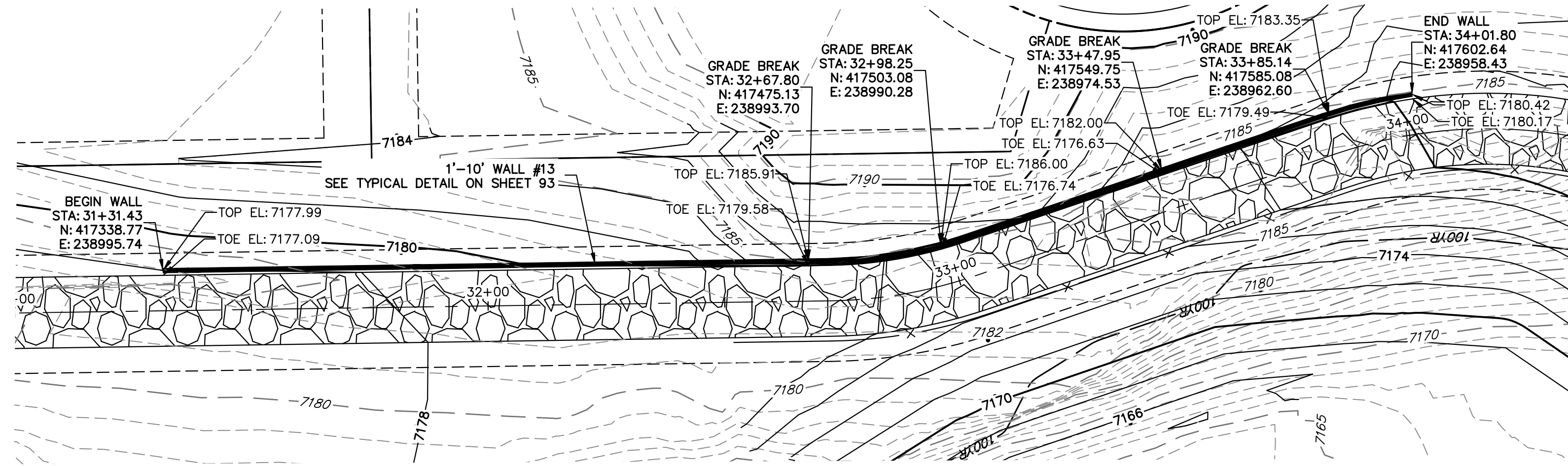
MAINTENANCE TRAIL WALL #11



KEY MAP
SCALE: 1"=2000'



MAINTENANCE TRAIL WALL #12

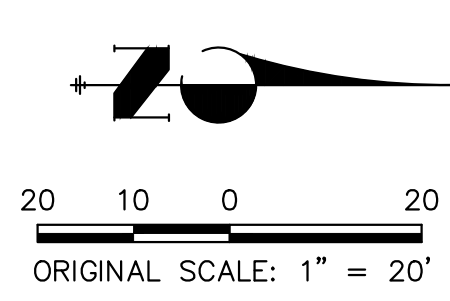


MAINTENANCE TRAIL WALL #13

- BENCHMARK**
- THE TOP OF AN ALUMINUM SURVEYORS CAP, STAMPED "9853", AT THE SOUTHEAST BOUNDARY CORNER OF BARBARICK SUBDIVISION
NORTHING = 411416.273
EASTING = 235167.071
ELEVATION = 7023.42
 - THE TOP OF A RED PLASTIC SURVEYORS CAP, ILLEGIBLE, AT THE NORTHWEST BOUNDARY CORNER OF PANNEE RANCHEROS SUBDIVISION
NORTHING = 410095.404
EASTING = 235052.131
ELEVATION = 7000.40
 - THE TOP OF A RED PLASTIC SURVEYORS CAP, STAMPED "38141", AT THE SOUTHWEST BOUNDARY CORNER OF BARBARICK SUBDIVISION
NORTHING = 411399.962
EASTING = 233849.817
ELEVATION = 7030.82

- NOTES:**
- STEEPEST ALLOWABLE GRADE IS 12%.
 - MAINTENANCE ACCESS TRAILS WITH SLOPES GREATER THAN 10% ARTICULATED CONCRETE WILL BE USED.

BASIS OF BEARINGS
THE SOUTH LINE OF THE SOUTHWEST QUARTER OF SECTION 34, TOWNSHIP 12 SOUTH, RANGE 65 WEST OF THE 6TH P.M. AS MONUMENTED AT THE SOUTHWEST CORNER OF SAID BY A 2-1/2" ALUMINUM CAP STAMPED "LS 11624" AND AT THE SOUTHEAST CORNER OF SAID SOUTHWEST QUARTER BY A 2-1/2" ALUMINUM CAP STAMPED "LS 11624", SAID LINE BEARS N89°14'14"E, A DISTANCE OF 2,722.69 FEET.



ENGINEER'S STATEMENT
PREPARED UNDER MY DIRECT SUPERVISION

Mike Bramlett
MIKE A. BRAMLETT, P.E.
32314
11/20/23

MIKE A. BRAMLETT, P.E.
COLORADO P.E. 32314
FOR AND ON BEHALF OF JR ENGINEERING

PREPARED FOR SR LAND, LLC 20 BOULDER CRESCENT 2ND FLOOR COLORADO SPRINGS, CO 80903 JAMES F. MORLEY (719) 419-3024	UNTIL SUCH TIME AS THESE DRAWINGS ARE APPROVED BY THE APPROPRIATE REVIEWING AGENCIES, JR ENGINEERING APPROVES THEIR USES DESIGNATED BY WRITTEN AUTHORIZATION.	
	J.R. ENGINEERING A Westman Company Centennial 303-740-9888 • Colorado Springs 719-583-2583 Fort Collins 970-491-9888 • www.jrengineering.com	SAND CREEK RESTORATION MAINTENANCE ACCESS PLAN & PROFILE
BY DATE NO. REVISION H-SCALE 1"=20' V-SCALE N/A DATE 11/20/23 DESIGNED BY NEO DRAWN BY NEO CHECKED BY	SHEET 95 OF 121 JOB NO. 25188.04	811 Know what's below. Call before you dig.