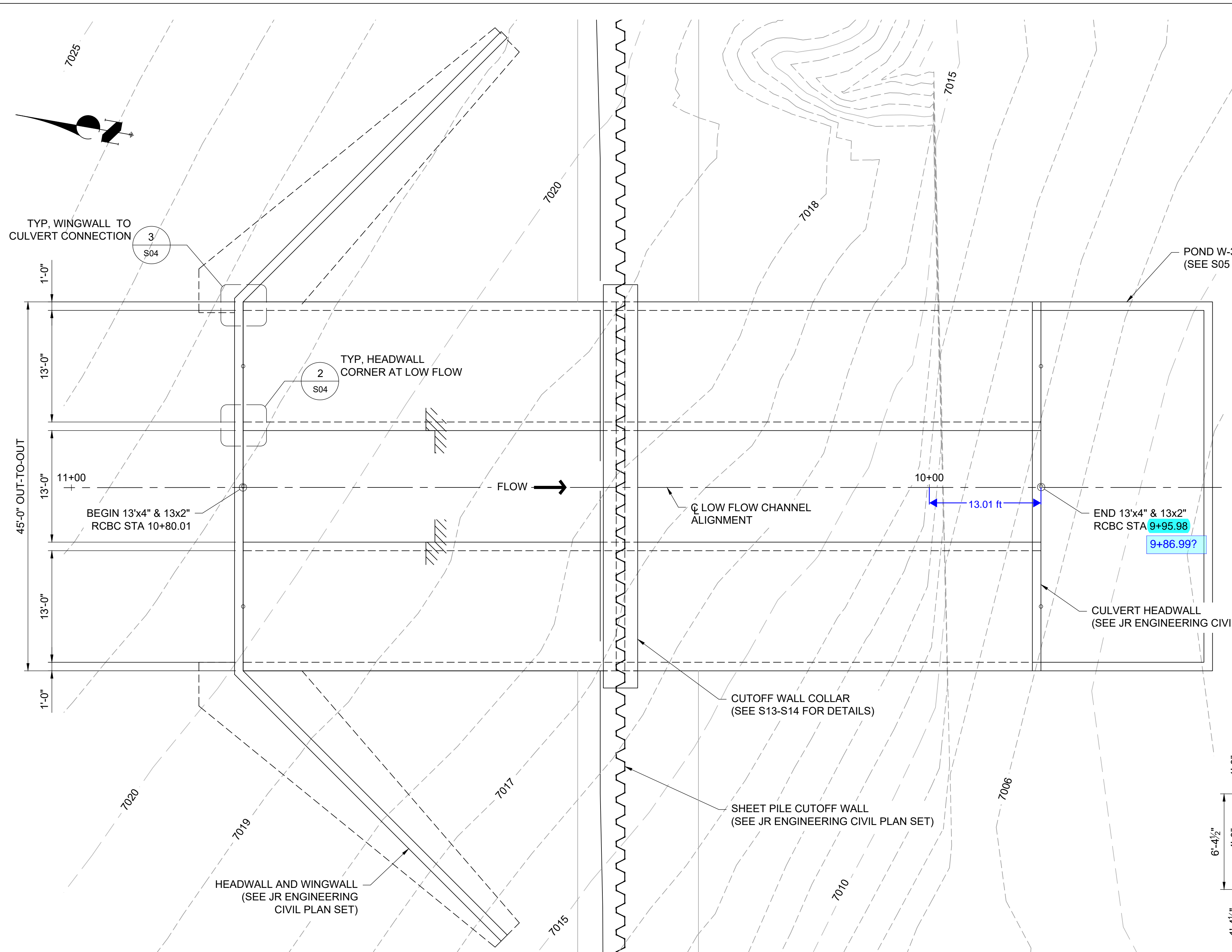
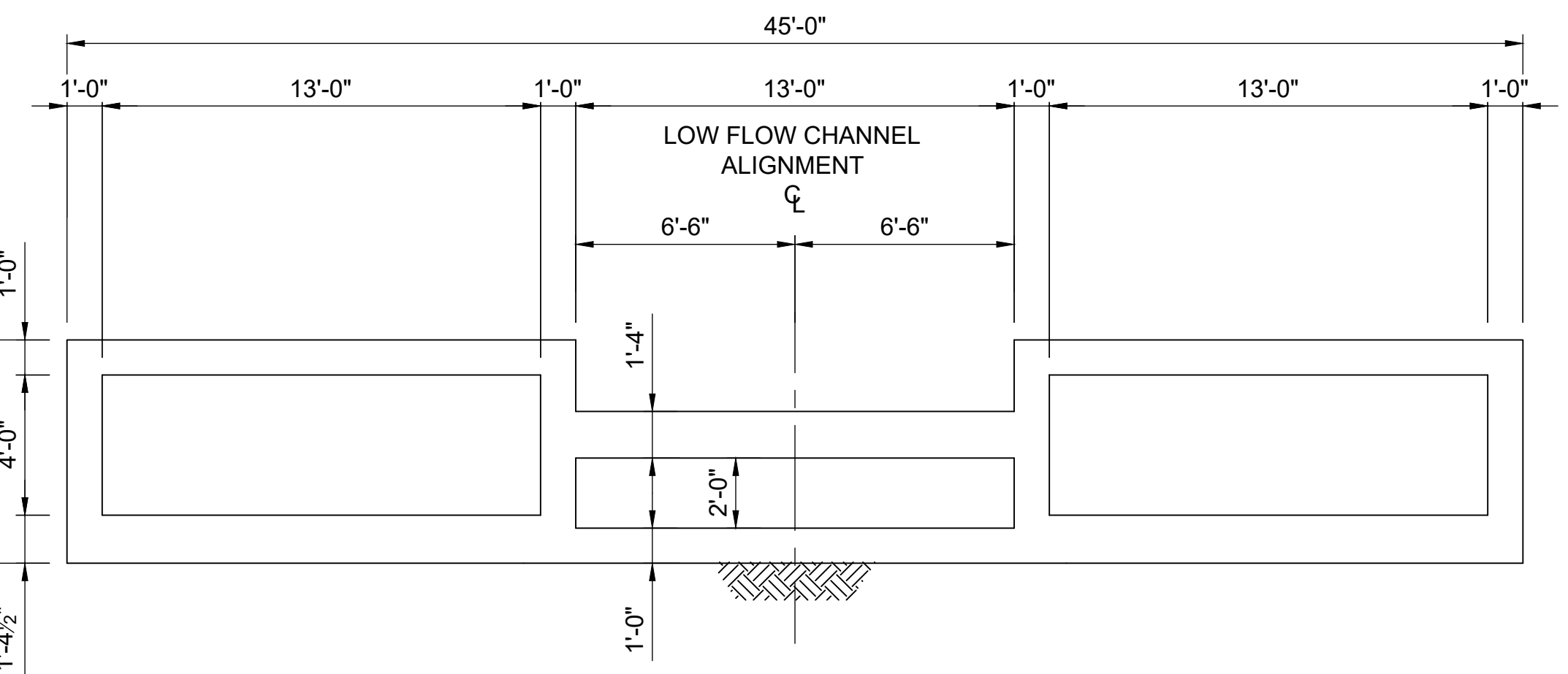


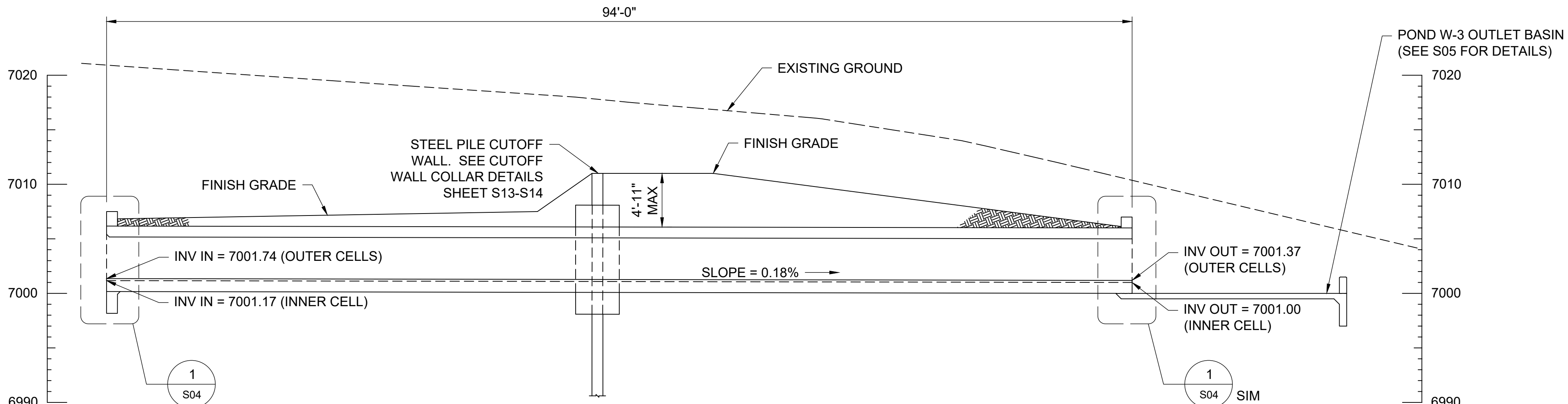
F:\Projects\Sand Creek Channel at Sterling Ranch\02 Drawings\Sand Creek Restoration_Structural



PLAN VIEW THREE-CELL RCBC
STOCK POND W-3 LOW FLOW STRUCTURE



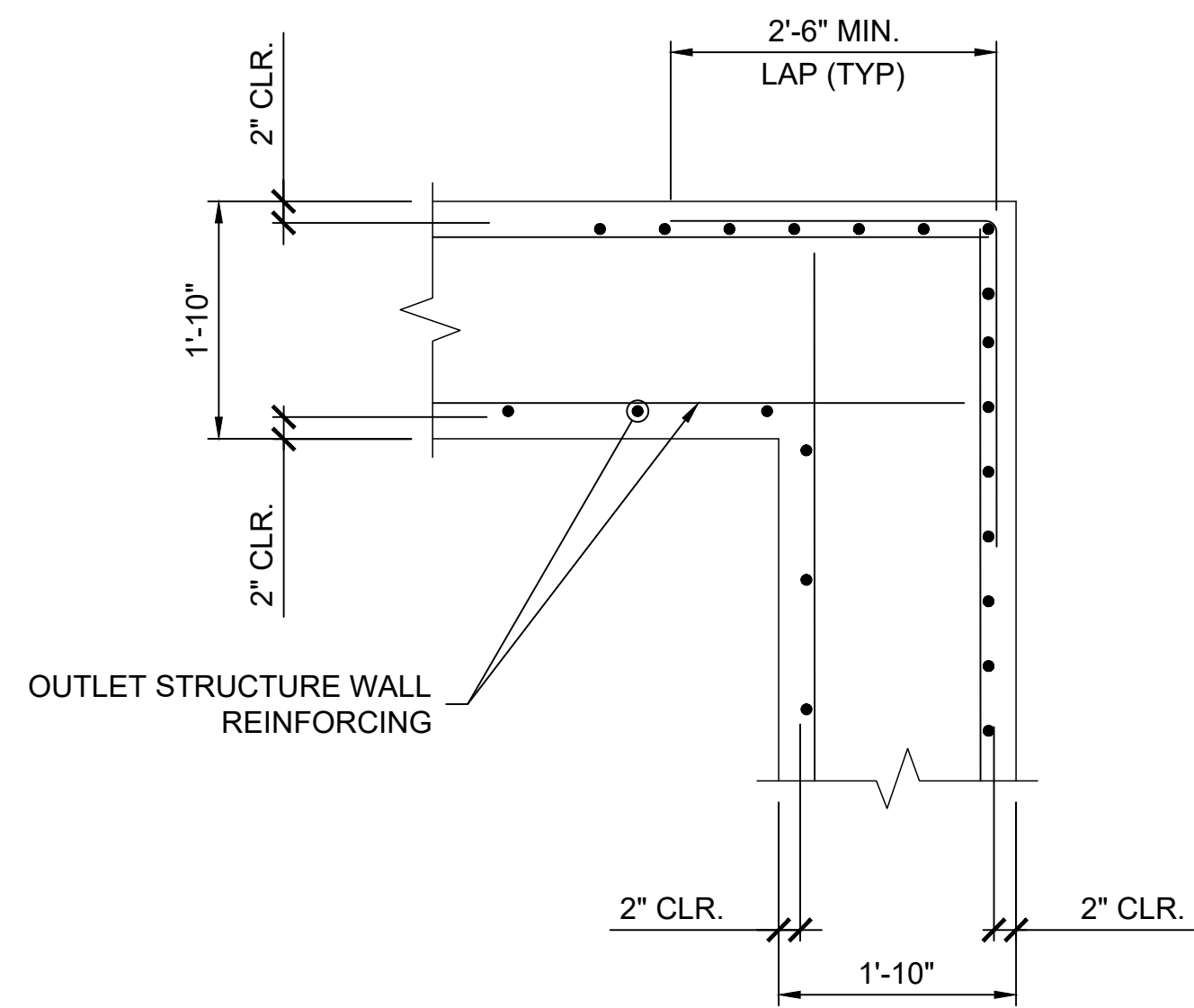
THREE-CELL CULVERT SECTION
STOCK POND W-3 LOW FLOW STRUCTURE



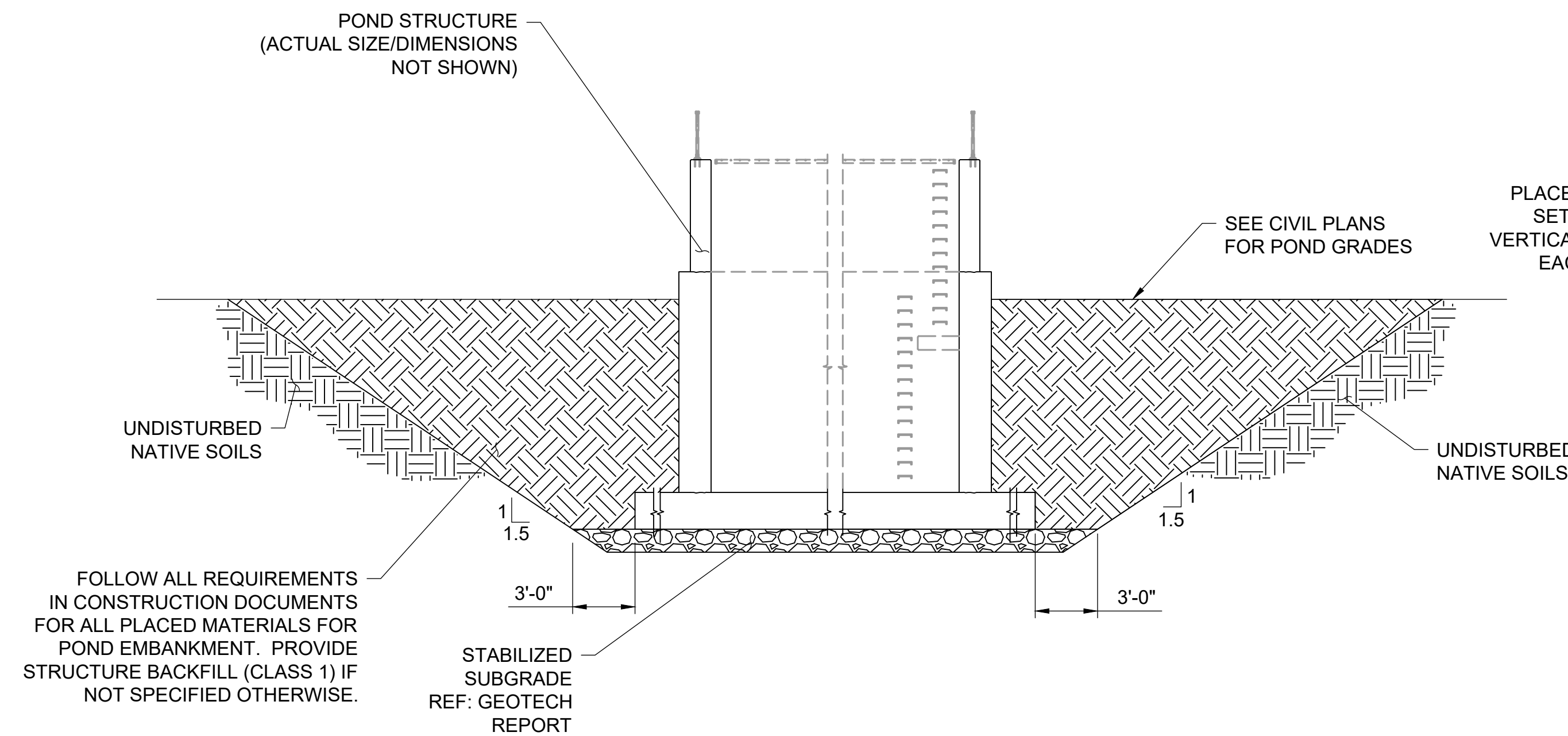
THREE-CELL RCBC LONGITUDINAL SECTION
STOCK POND W-3 LOW FLOW STRUCTURE



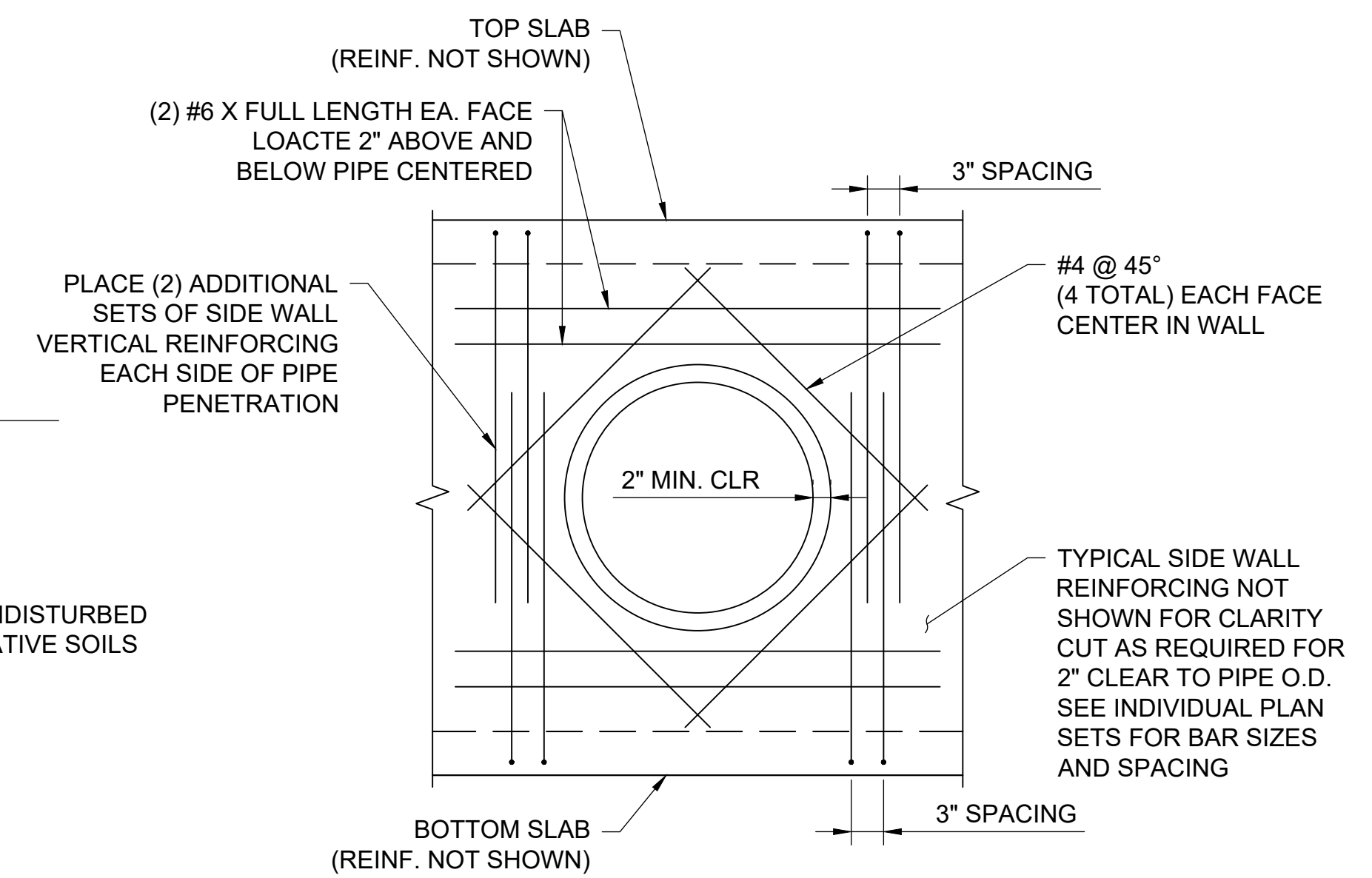
UNTIL SUCH TIME AS THESE DRAWINGS ARE APPROVED BY THE APPROPRIATE REVIEWING AGENCIES, SAN ENGINEERING APPROVES THE PURPOSES DESIGNATED BY WRITTEN AUTHORIZATION.	
PREPARED FOR	SR LAND, LLC 20 BOULDER CRESCENT ST. COLORADO SPRINGS, CO 80903 JAMES F. MORLEY (719) 419-3024
 San Engineering LLC Civil and Structural Engineering 1150 W. Littleton Blvd. #200 Littleton, CO 80120 303.953.9014 www.sanengineeringllc.com	
BY	DATE
REVISION	DATE
AS NOTED	AS NOTED
H-SCALE	V-SCALE
DESIGNED BY	DATE
DRAWN BY	DESIGNED BY
CHECKED BY	DRAWN BY
SAND CREEK RESTORATION STERLING RANCH STOCK POND W-3 OUTLET 3-CELL BOX CULVERT GENERAL LAYOUT	
STRUCTURAL ENGINEER'S STATEMENT PREPARED UNDER MY DIRECT SUPERVISION JOHN MIGLIACCIO, P.E. COLORADO NO. 34333 FOR AND ON BEHALF OF SAN ENGINEERING, LLC.	
SHEET S03 OF 25	
JOB NO. 25188.04	



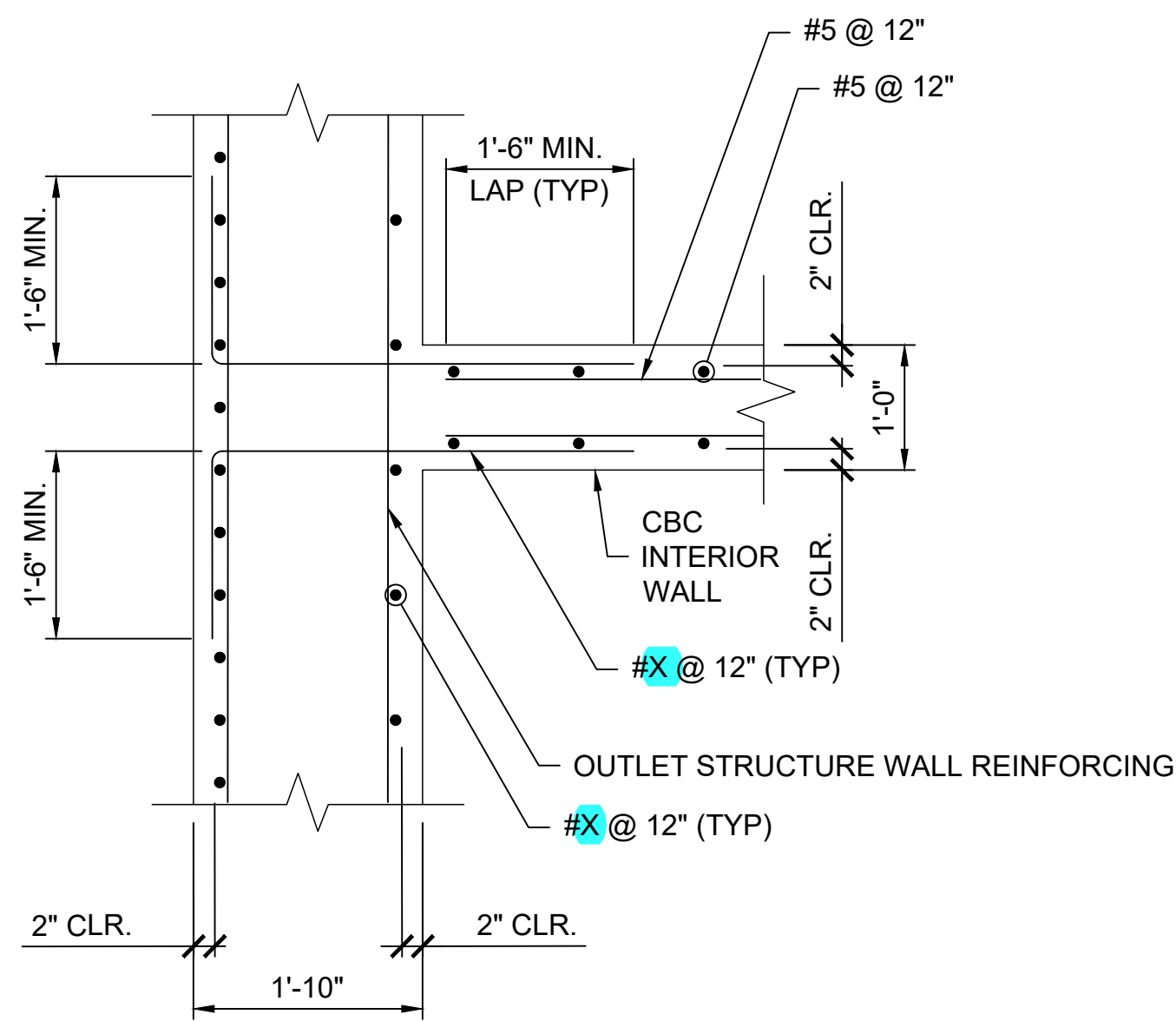
1 TYPICAL CORNER DETAIL
SCALE: 1/2" = 1'-0"



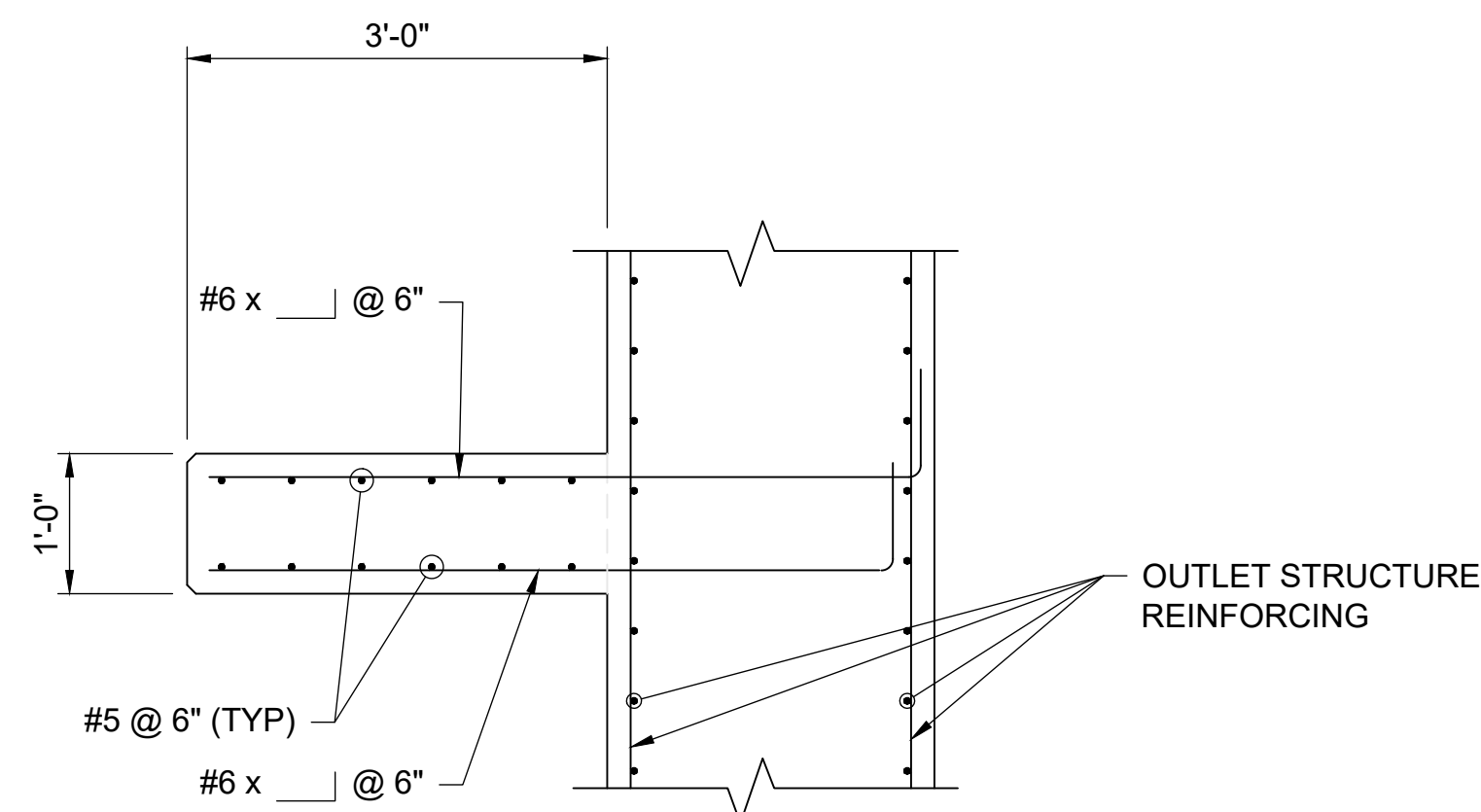
2 EXCAVATION AND BACKFILL REQUIREMENTS
SCALE: 1/2" = 1'-0"



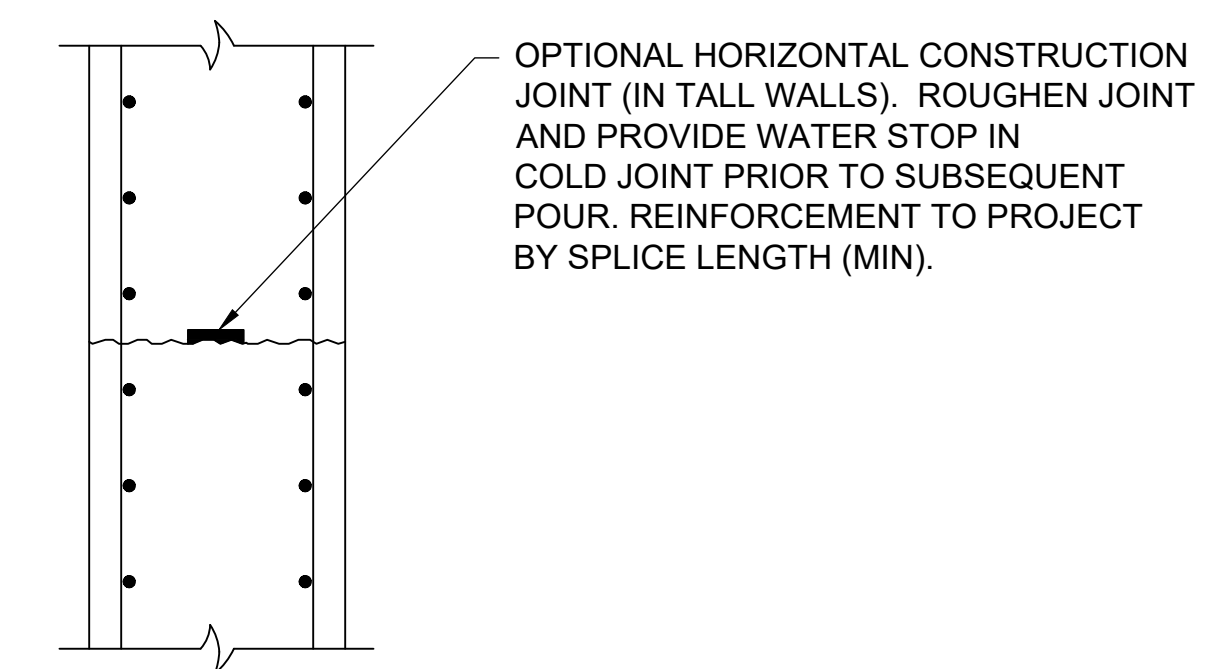
3 PIPE PENETRATION DETAIL
SCALE: 1/2" = 1'-0"



4 WALL INTERSECTION DETAIL
SCALE: 1/2" = 1'-0"



5 MID-HEIGHT LANDING SECTION
SCALE: 1/2" = 1'-0"



6 HORIZONTAL WALL CONSTRUCTION JOINT

UNTIL SUCH TIME AS THESE DRAWINGS ARE APPROVED BY THE APPROPRIATE REVIEWING AGENCIES, SAN ENGINEERING APPROVES THESE DRAWINGS FOR THE PURPOSES DESIGNATED BY WRITTEN AUTHORIZATION.

PREPARED FOR:
SR LAND, LLC
20 BOULDER CRESCENT ST.
COLORADO SPRINGS, CO 80903
JAMES F. MORLEY
(719) 419-3024

San Engineering LLC
Civil and Structural Engineering
1150 W. Littleton Blvd. #200
Littleton, CO 80120
303.953.9014
www.sanengineeringllc.com

NO.	REVISION	BY	DATE

H-SCALE	V-SCALE	AS NOTED DATE	AS NOTED DATE	DESIGNED BY	DRAWN BY	CHECKED BY
		4/19/2023		KSP	JJM	JKH

SAND CREEK RESTORATION
STERLING RANCH
STOCK PONDS #1 & #2
OUTLET STRUCTURES
MISCELLANEOUS DETAILS

SHEET S21 OF 25
JOB NO. 25188.04

STRUCTURAL ENGINEER'S STATEMENT
PREPARED UNDER MY DIRECT SUPERVISION

John Migliaccio
PROFESSIONAL ENGINEER
04/19/2023

JOHN MIGLIACCIO, P.E.
COLORADO NO. 34333
FOR AND ON BEHALF OF SAN ENGINEERING, LLC. DATE