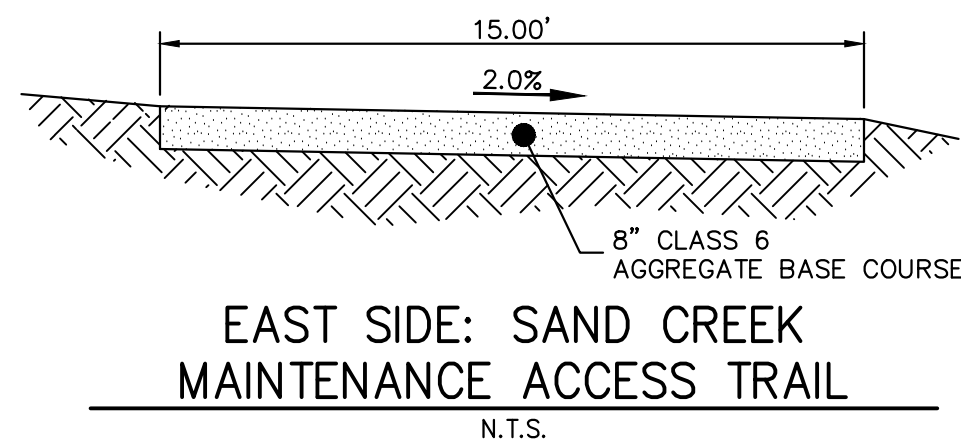
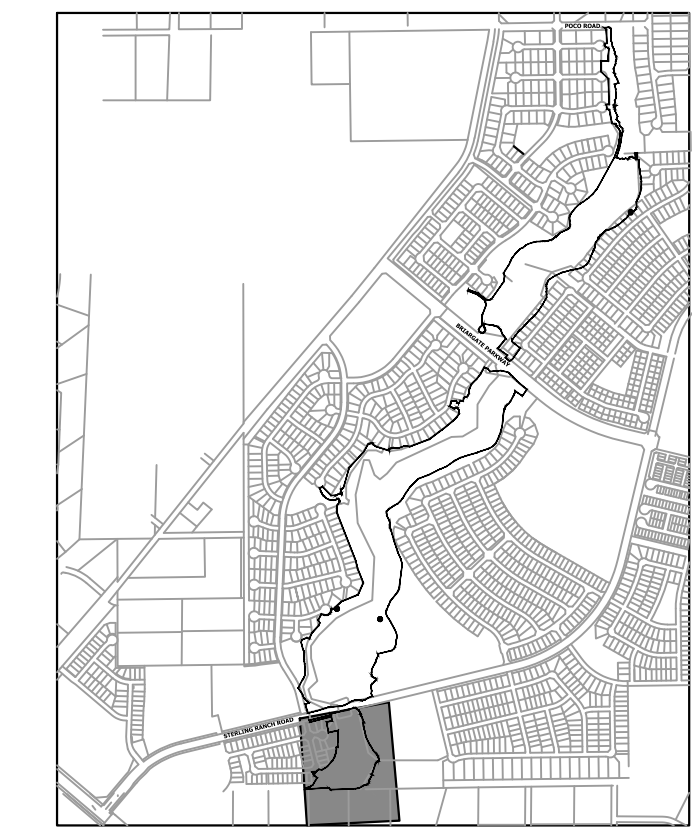
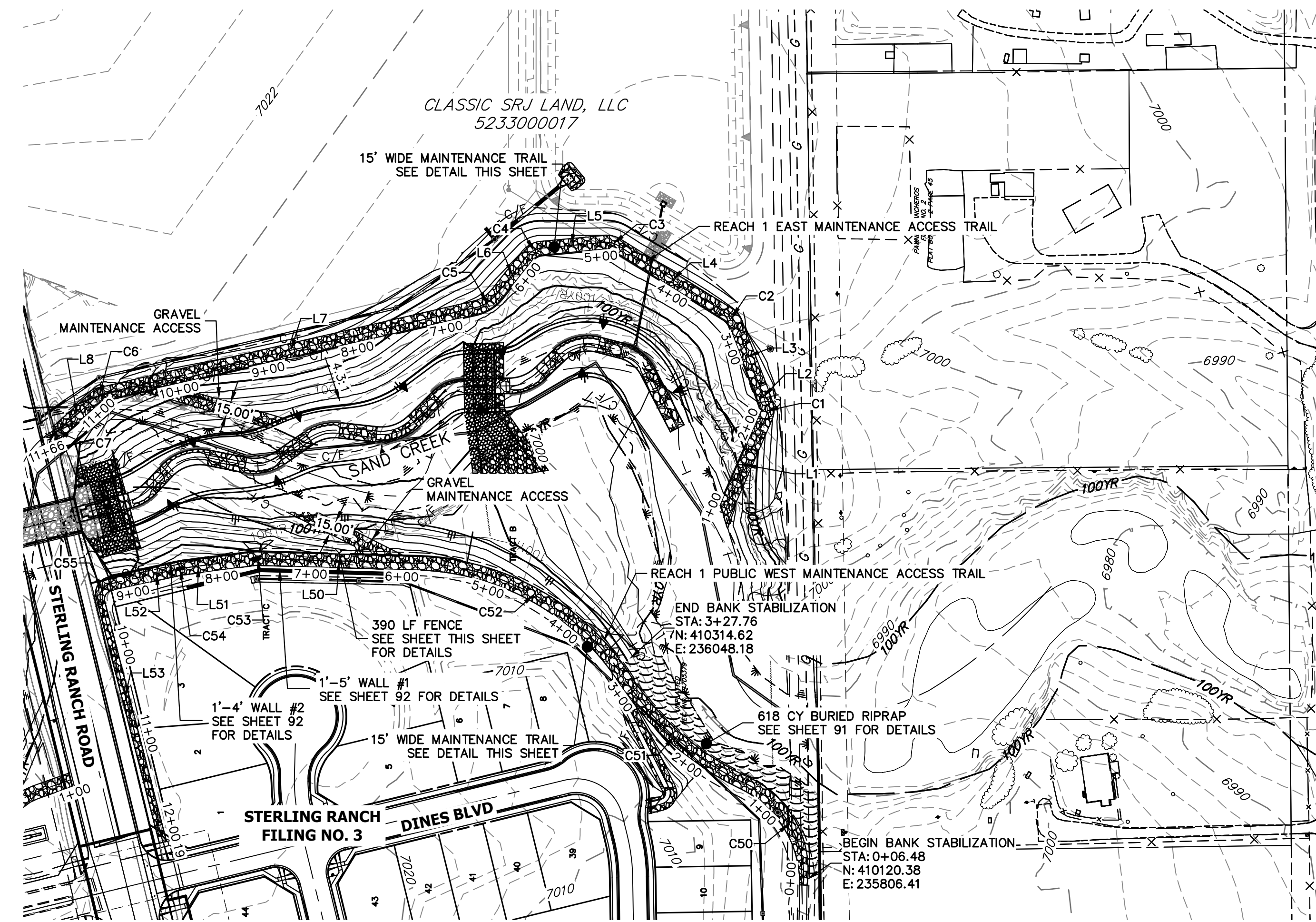


NOTES:
FENCING IS REQUIRED ALONG EAST AND WEST SIDE OF CHANNEL PER ECM CRITERIA WHEN SLOPES ARE GREATER THAN 4:1. SPLIT RAIL FENCING LOCATION ALONG WEST SIDE OF CHANNEL TO BE COORDINATED WITH EXISTING SUBDIVISION/PARK FENCING. FENCING LOCATION ALONG EAST SIDE OF CHANNEL TO BE COORDINATED WITH PROPOSED SUBDIVISION/PARK FENCING SHOWN ON STERLING RANCH EAST PHASE 1 PRELIMINARY PLAN.

3 RAIL FENCE
SCALE: N.T.S.



EAST SIDE: SAND CREEK MAINTENANCE ACCESS TRAIL
N.T.S.

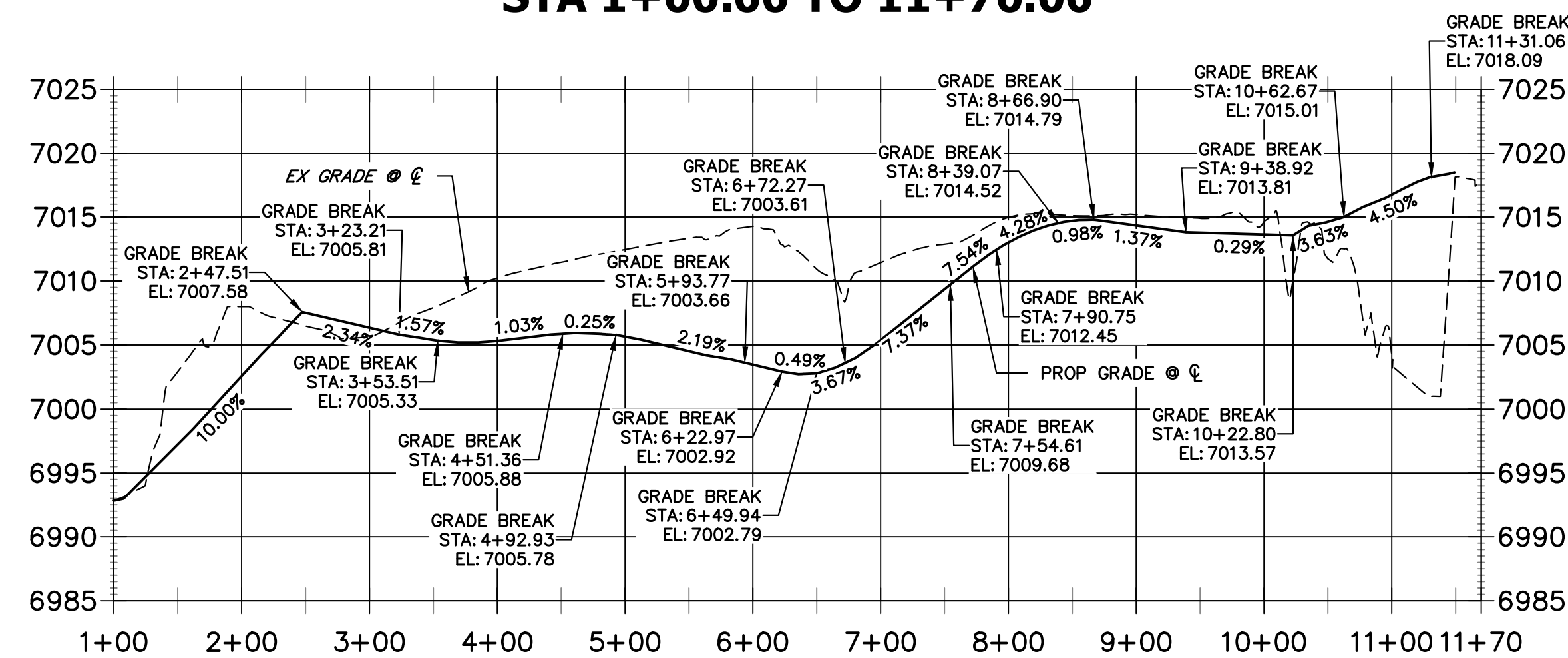


KEY MAP
SCALE: 1"=2000'

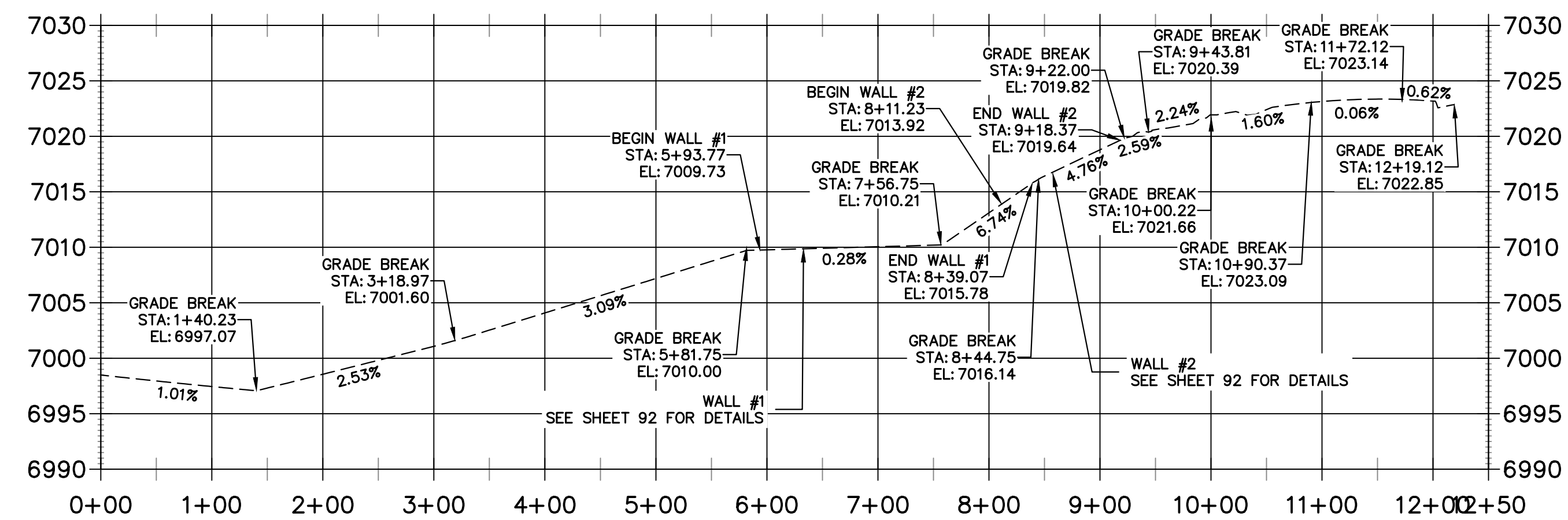
LINE	BEARING	DISTANCE
L1	S66°28'16"E	115.56'
L2	N70°37'22"E	18.85'
L3	N69°00'00"E	75.70'
L4	N31°56'59"E	141.86'
L5	N05°18'50"W	69.68'
L6	N51°23'41"W	53.67'
L7	N12°59'41"W	414.03'
L8	N41°42'42"W	48.15'
L50	N01°40'18"E	175.00'
L51	N07°32'37"W	77.15'
L52	N12°21'08"W	75.72'
L53	S75°34'07"W	274.28'

CURVE	DELTA	RADIUS	LENGTH
C1	42°53'48"	17.50'	13.10'
C2	37°03'01"	22.50'	14.55'
C3	37°15'49"	22.50'	14.63'
C4	46°04'50"	22.50'	18.10'
C5	38°23'59"	42.50'	28.48'
C6	28°43'00"	32.50'	16.29'
C7	14°58'17"	32.50'	8.49'
C50	70°40'45"	113.34'	139.81'
C51	32°21'06"	317.29'	179.16'
C52	53°54'56"	279.25'	262.78'
C53	7°50'43"	47.50'	6.50'
C54	7°38'34"	47.50'	6.34'
C55	91°31'17"	14.00'	22.37'

EAST SIDE: SAND CREEK MAINTENANCE ACCESS TRAIL PROFILE REACH 1
STA 1+00.00 TO 11+70.00



WEST SIDE: SAND CREEK REGIONAL TRAIL & MAINTENANCE ACCESS TRAIL PROFILE REACH 1
STA 0+00.00 TO 12+50.00



BENCHMARK

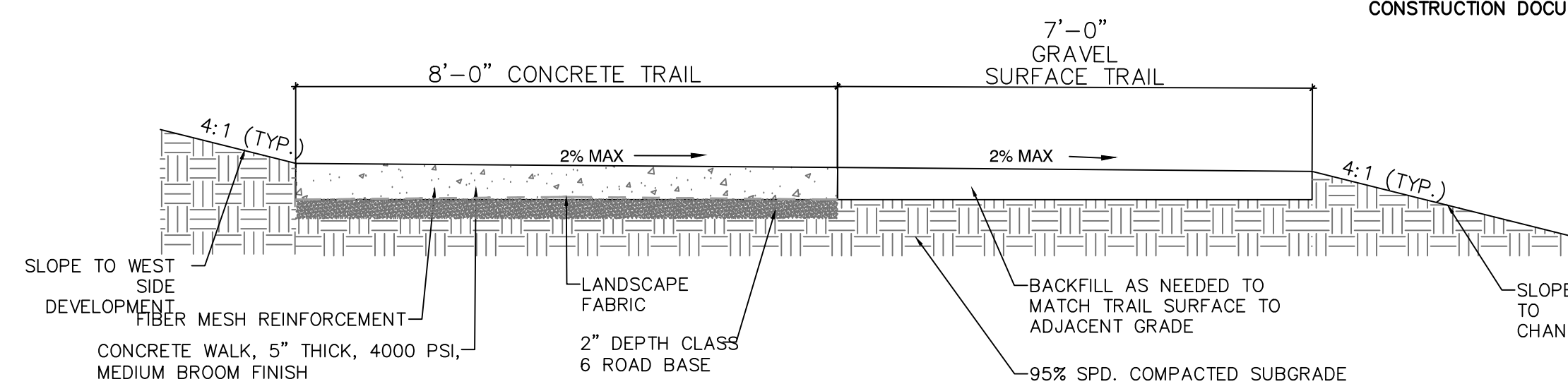
- THE TOP OF AN ALUMINUM SURVEYORS CAP, STAMPED "9853", AT THE SOUTHEAST BOUNDARY CORNER OF BARBARICK SUBDIVISION
NORTHING = 411416.273
EASTING = 235167.071
ELEVATION = 7023.42
- THE TOP OF A RED PLASTIC SURVEYORS CAP, ILLEGIBLE, AT THE NORTHWEST BOUNDARY CORNER OF PAWNEE RANCHEROS SUBDIVISION
NORTHING = 410095.404
EASTING = 235052.131
ELEVATION = 7000.40
- THE TOP OF A RED PLASTIC SURVEYORS CAP, STAMPED "38141", AT THE SOUTHWEST BOUNDARY CORNER OF BARBARICK SUBDIVISION
NORTHING = 411399.962
EASTING = 233849.817
ELEVATION = 7030.82

NOTES:

- STEEPEST ALLOWABLE GRADE IS 12%.
- MAINTENANCE ACCESS TRAILS WITH SLOPES GREATER THAN 10% ARTICULATED CONCRETE WILL BE USED.

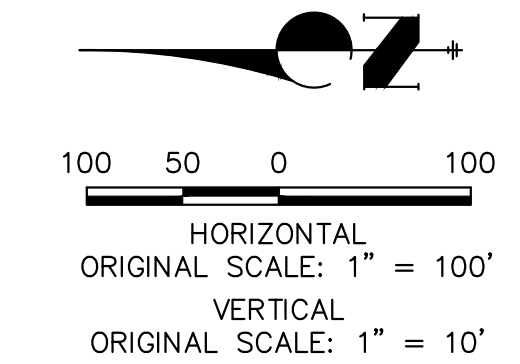
BASIS OF BEARINGS

THE SOUTH LINE OF THE SOUTHWEST QUARTER OF SECTION 34, TOWNSHIP 12 SOUTH, RANGE 65 WEST OF THE 6TH P.M. AS MONUMENTED AT THE SOUTHWEST CORNER OF SAID BY A 2-1/2" ALUMINUM CAP STAMPED "LS 11624" AND AT THE SOUTHEAST CORNER OF SAID SOUTHWEST QUARTER BY A 2-1/2" ALUMINUM CAP STAMPED "LS 11624", SAID LINE BEARS N89°14'14"E, A DISTANCE OF 2,722.69 FEET.



WEST SIDE: SAND CREEK REGIONAL TRAIL/MAINTENANCE ACCESS TRAIL
SCALE: 1"=2'

- NOTES:
- SAWCUT CONSTRUCTION JOINTS EVERY 10' (1/4 DEPTH OF TRAIL)
 - INSTALL EXPANSION JOINTS EVERY 100'
 - STAKING AND WOOD FORMS ARE TO BE APPROVED PRIOR TO POURING CONCRETE. THIS NOTE SHALL BE INCLUDED ON ALL SETS OF CONSTRUCTION DOCUMENTS COVERING THE SCOPE OF THE TRAIL.



ENGINEER'S STATEMENT

PREPARED UNDER MY DIRECT SUPERVISION
Mike Bramlett
MIKE A. BRAMLETT, P.E.
COLORADO P.E. 32314
FOR AND ON BEHALF OF JR ENGINEERING, INC.
DATE: 11/20/23

UNTIL SUCH TIME AS THESE DRAWINGS ARE APPROVED BY THE APPROPRIATE REVIEWING AGENCIES, JR ENGINEERING APPROVES THEIR USE AS DESIGNATED BY WRITTEN AUTHORIZATION.

PREPARED FOR
SR LAND, LLC
20 BOULDER CRESCENT
2ND FLOOR
COLORADO SPRINGS, CO 80903
JAMES F. MORLEY
(719) 419-3024

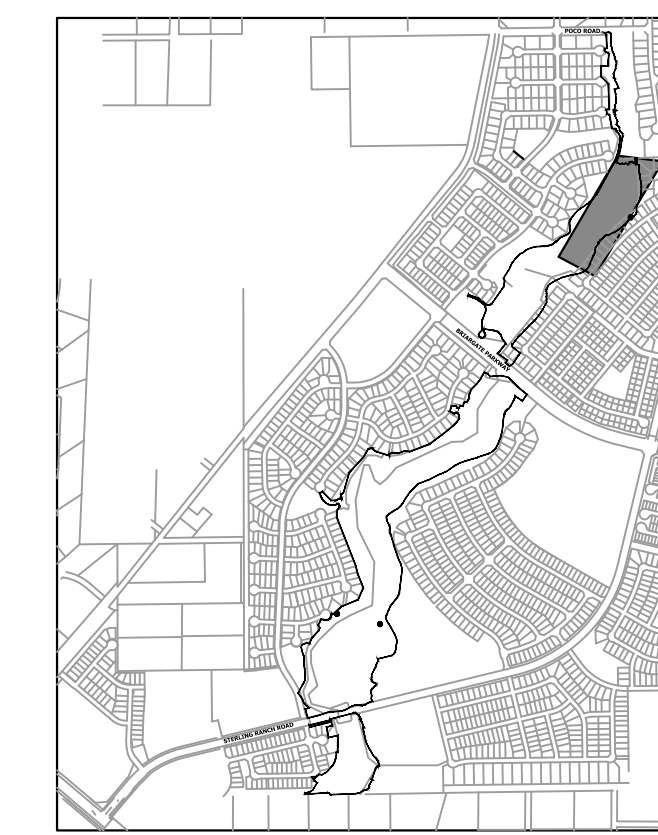
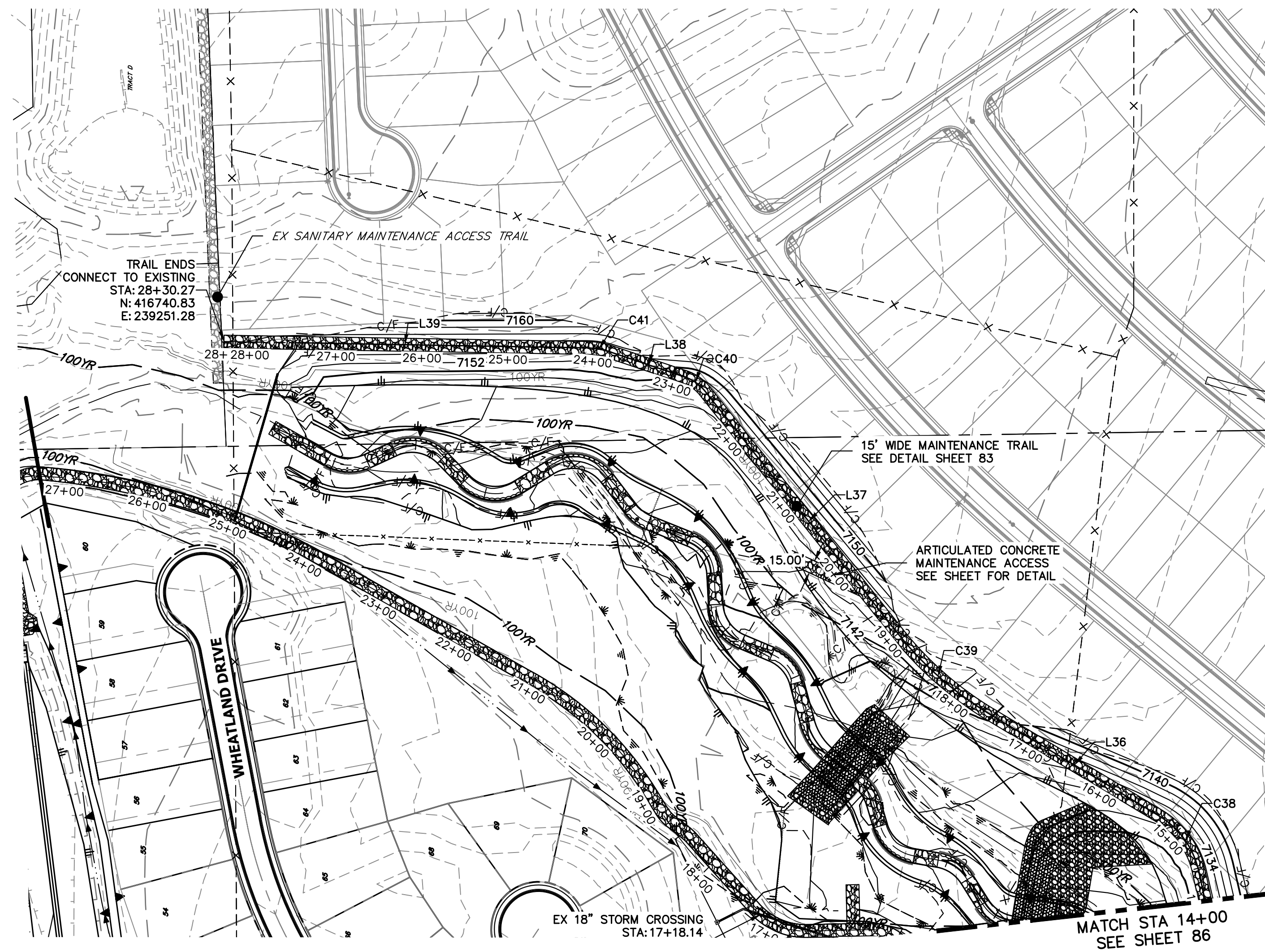
J.R. ENGINEERING
A Westman Company
Central 300-740-9888 • Colorado Springs 719-583-2583
Fort Collins 970-491-9888 • www.jrengineering.com

BY	DATE	REVISION

H-SCALE: 1"=100'
V-SCALE: 1"=10'
DATE: 11/20/23
DESIGNED BY: NEO
DRAWN BY: NEO
CHECKED BY: NEO

SAND CREEK RESTORATION
MAINTENANCE ACCESS PLAN & PROFILE

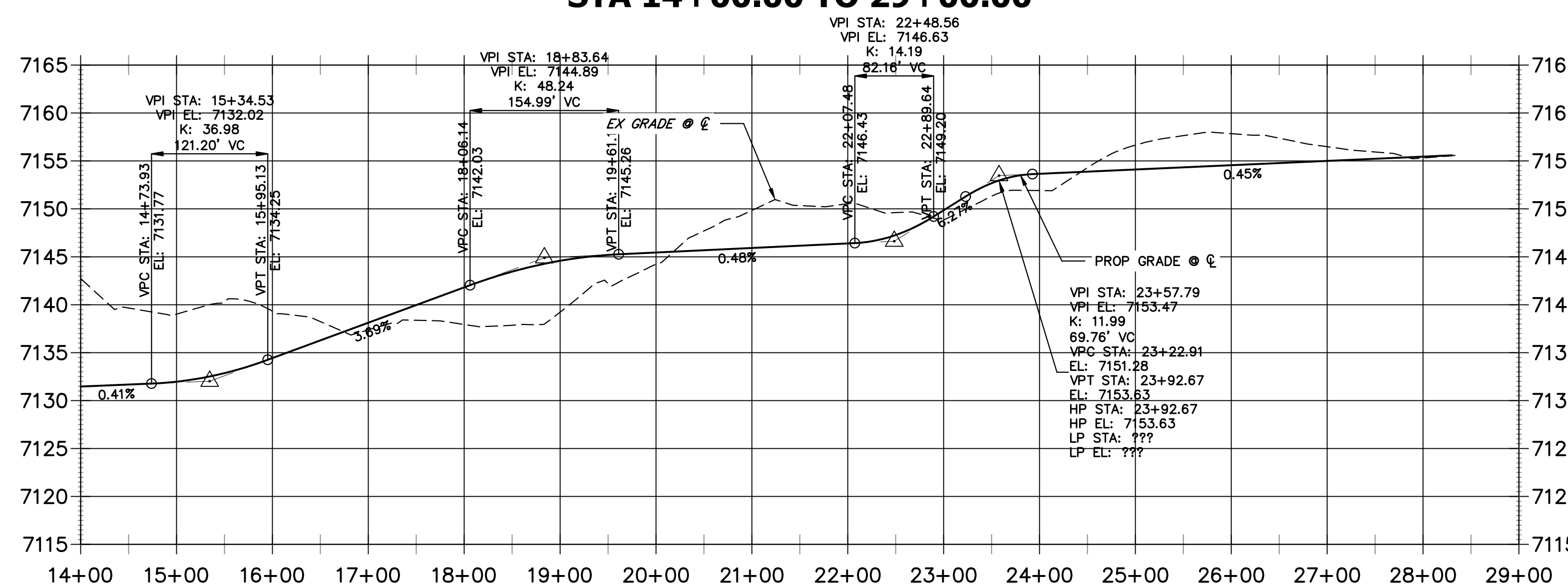
SHEET 83 OF 121
JOB NO. 25188.04



CURVE TABLE			
CURVE	DELTA	RADIUS	LENGTH
C38	46°45'59"	100.00'	81.62'
C39	21°27'49"	400.00'	149.84'
C40	30°11'53"	50.59'	26.66'
C41	17°34'04"	100.00'	30.66'

LINE TABLE		
LINE	BEARING	DISTANCE
L36	N31°01'24"E	229.41'
L37	N51°28'24"E	353.36'
L38	N18°35'32"E	91.99'
L39	N01°01'28"E	420.45'

EAST SIDE: SAND CREEK MAINTENANCE ACCESS TRAIL PROFILE REACH 3 (2) STA 14+00.00 TO 29+00.00

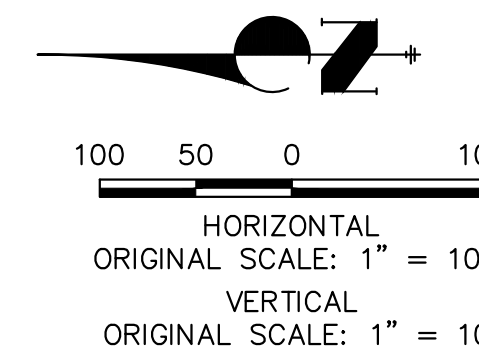


BENCHMARK

- THE TOP OF AN ALUMINUM SURVEYORS CAP, STAMPED "9853", AT THE SOUTHEAST BOUNDARY CORNER OF BARBARICK SUBDIVISION
NORTHING = 411416.273
EASTING = 235167.071
ELEVATION = 7023.42
- THE TOP OF A RED PLASTIC SURVEYORS CAP, ILLEGIBLE, AT THE NORTHWEST BOUNDARY CORNER OF PANNE RANCHEROS SUBDIVISION
NORTHING = 410095.404
EASTING = 235052.131
ELEVATION = 7000.40
- THE TOP OF A RED PLASTIC SURVEYORS CAP, STAMPED "38141", AT THE SOUTHWEST BOUNDARY CORNER OF BARBARICK SUBDIVISION
NORTHING = 411399.962
EASTING = 233849.817
ELEVATION = 7030.82

BASIS OF BEARINGS

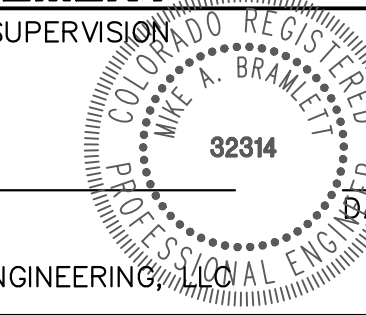
THE SOUTH LINE OF THE SOUTHWEST QUARTER OF SECTION 34, TOWNSHIP 12 SOUTH, RANGE 65 WEST OF THE 6TH P.M. AS MONUMENTED AT THE SOUTHWEST CORNER OF SAID BY A 2-1/2" ALUMINUM CAP STAMPED "LS 11624" AND AT THE SOUTHEAST CORNER OF SAID SOUTHWEST QUARTER BY A 2-1/2" ALUMINUM CAP STAMPED "LS 11624", SAID LINE BEARS N89°14'14"E, A DISTANCE OF 2,722.69 FEET.



ENGINEER'S STATEMENT

PREPARED UNDER MY DIRECT SUPERVISION

Mike Bramlett



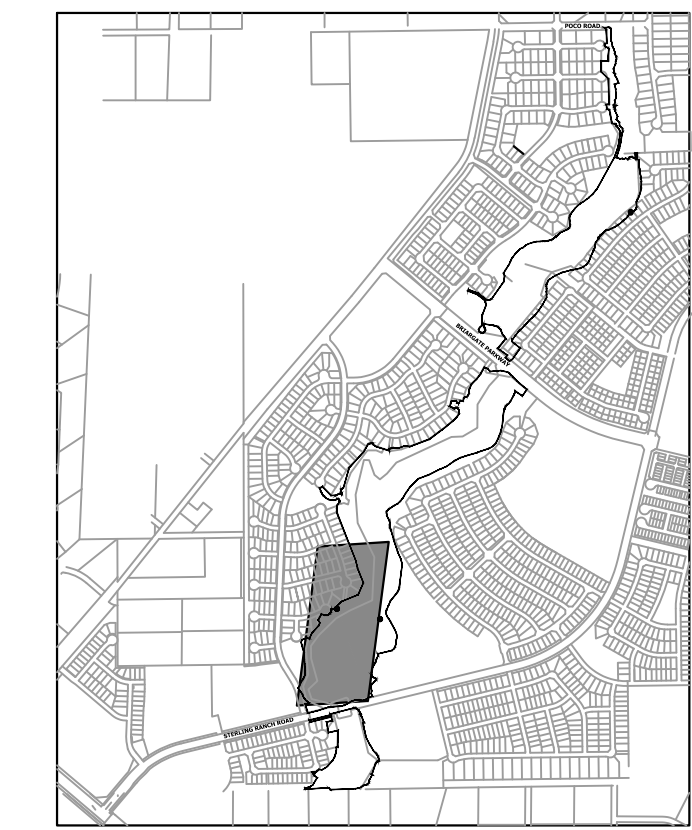
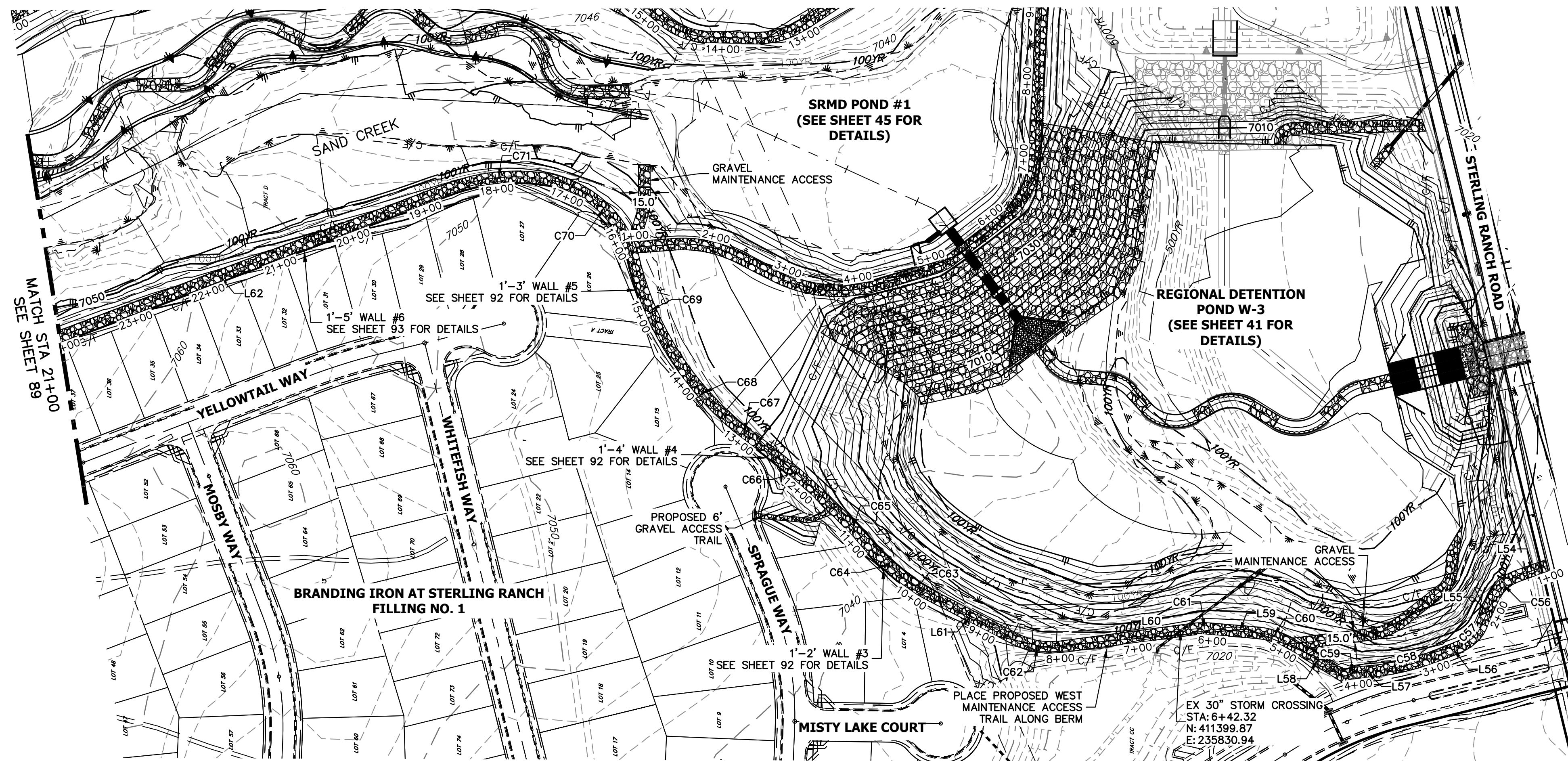
MIKE A. BRAMLETT, P.E.
COLORADO P.E. 32314
FOR AND ON BEHALF OF JR ENGINEERING

BY	DATE	No.	REVISION	H-SCALE	V-SCALE	DATE	DESIGNED BY	DRAWN BY	CHECKED BY
				1"=100'	1"=10'	11/20/23	NEO	NEO	
SAND CREEK RESTORATION				MAINTENANCE ACCESS PLAN & PROFILE					
SHEET 87 OF 121				JOB NO. 25188.04					

J.R. ENGINEERING
A Westman Company
Central 303-740-9888 • Colorado Springs 719-583-2583
Fort Collins 970-491-9888 • www.jrengineering.com

PREPARED FOR
SR LAND, LLC
20 BOULDER CRESCENT
2ND FLOOR
COLORADO SPRINGS, CO 80903
JAMES F. MORLEY
(719) 419-3024

UNTIL SUCH TIME AS THESE DRAWINGS ARE APPROVED BY THE APPROPRIATE REVIEWING AGENCIES, OR ENGINEERING APPROVES THEIR USE, THESE DRAWINGS ARE DESIGNATED BY WRITTEN AUTHORIZATION.



KEY MAP
SCALE: 1"=2000'

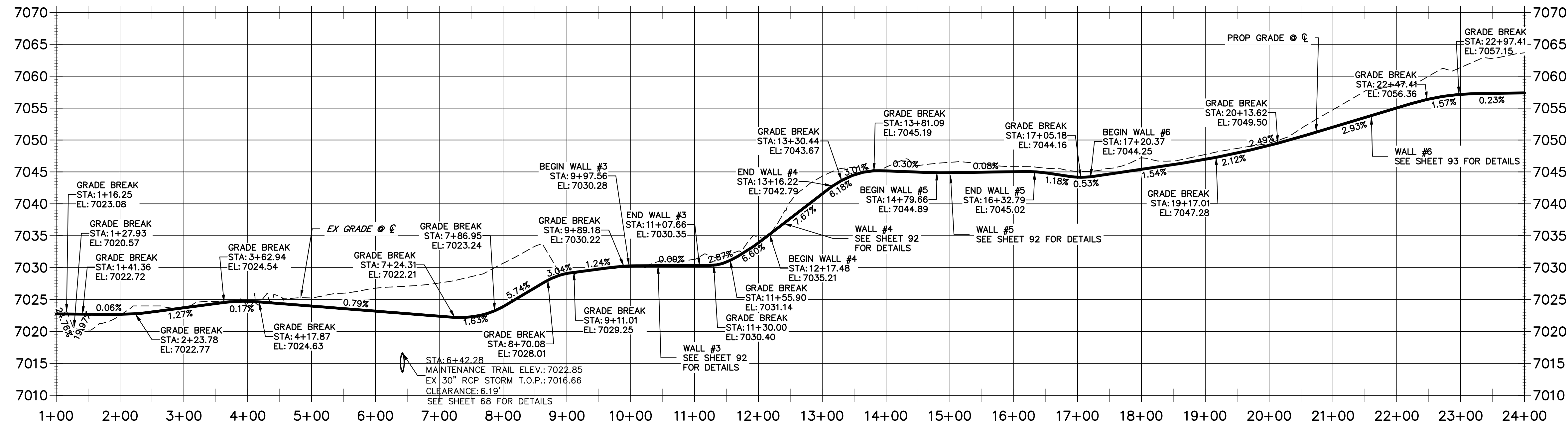
LINE TABLE

LINE	BEARING	DISTANCE
L54	N19°31'17"W	41.36'
L55	N66°04'20"W	41.88'
L56	N22°48'16"W	24.32'
L57	N05°03'38"W	10.52'
L58	N31°31'18"E	79.04'
L59	N04°49'30"E	53.49'
L60	N07°37'16"W	172.14'
L61	N27°19'03"E	130.00'
L62	N20°45'21"W	624.75'

CURVE TABLE

CURVE	DELTA	RADIUS	LENGTH
C56	46°33'03"	50.00'	40.62'
C57	36°57'31"	53.95'	34.80'
C58	16°23'12"	345.51'	98.82'
C59	9°02'20"	162.03'	25.56'
C60	26°37'52"	99.89'	46.43'
C61	14°19'27"	117.02'	29.26'
C62	34°56'47"	100.00'	60.99'
C63	10°27'43"	135.22'	24.69'
C64	11°40'32"	355.68'	72.48'
C65	4°26'59"	749.68'	58.22'
C66	8°47'11"	936.18'	143.56'
C67	2°55'23"	561.72'	28.66'
C68	16°32'59"	408.98'	118.13'
C69	19°17'00"	402.92'	135.60'
C70	64°55'43"	139.40'	157.97'
C71	31°49'22"	247.39'	137.41'

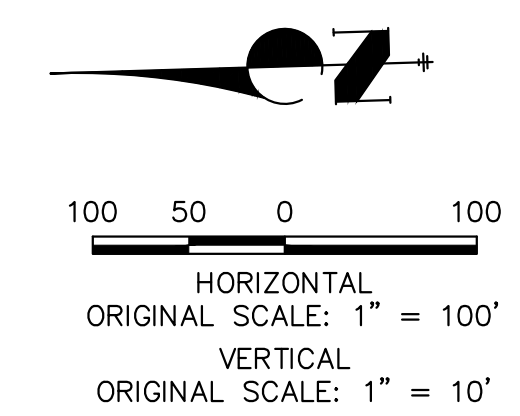
WEST SIDE: SAND CREEK REGIONAL TRAIL & MAINTENANCE ACCESS TRAIL PROFILE REACH 2
STA 1+00.00 TO 24+00.00



- BENCHMARK**
- THE TOP OF AN ALUMINUM SURVEYORS CAP, STAMPED "3853", AT THE SOUTHEAST BOUNDARY CORNER OF BARBARICK SUBDIVISION
NORTHING = 411416.273
EASTING = 235167.071
ELEVATION = 7023.42
 - THE TOP OF A RED PLASTIC SURVEYORS CAP, ILLEGIBLE, AT THE NORTHWEST BOUNDARY CORNER OF PANNER RANCHEROS SUBDIVISION
NORTHING = 410095.404
EASTING = 235052.131
ELEVATION = 7000.40
 - THE TOP OF A RED PLASTIC SURVEYORS CAP, STAMPED "38141", AT THE SOUTHWEST BOUNDARY CORNER OF BARBARICK SUBDIVISION
NORTHING = 411399.962
EASTING = 233849.817
ELEVATION = 7030.82

- NOTES:**
- STEEPEST ALLOWABLE GRADE IS 12%.
 - MAINTENANCE ACCESS TRAILS WITH SLOPES GREATER THAN 10% ARTICULATED CONCRETE WILL BE USED.

BASIS OF BEARINGS
THE SOUTH LINE OF THE SOUTHWEST QUARTER OF SECTION 34, TOWNSHIP 12 SOUTH, RANGE 65 WEST OF THE 6TH P.M. AS MONUMENTED AT THE SOUTHWEST CORNER OF SAID BY A 2-1/2" ALUMINUM CAP STAMPED "LS 11624" AND AT THE SOUTHEAST CORNER OF SAID SOUTHWEST QUARTER BY A 2-1/2" ALUMINUM CAP STAMPED "LS 11624", SAID LINE BEARS N89°14'14"E, A DISTANCE OF 2,722.69 FEET.



ENGINEER'S STATEMENT
PREPARED UNDER MY DIRECT SUPERVISION

MIKE A. BRAMLETT, P.E.
COLORADO P.E. 32314
FOR AND ON BEHALF OF JR ENGINEERING

32314 11/20/23

PREPARED FOR
SR LAND, LLC
20 BOULDER CRESCENT
2ND FLOOR
COLORADO SPRINGS, CO 80903
JAMES F. MORLEY
(719) 419-3024

UNLESS SUCH TIME AS THESE DRAWINGS ARE APPROVED BY THE APPROPRIATE REVIEWING AGENCIES, OR ENGINEERING APPROVES THEIR USE, DESIGNATED BY WRITTEN AUTHORIZATION.

J.R. ENGINEERING
A Westman Company
Central 303-740-9888 • Colorado Springs 719-583-2583
Fort Collins 970-491-9888 • www.jrengineering.com

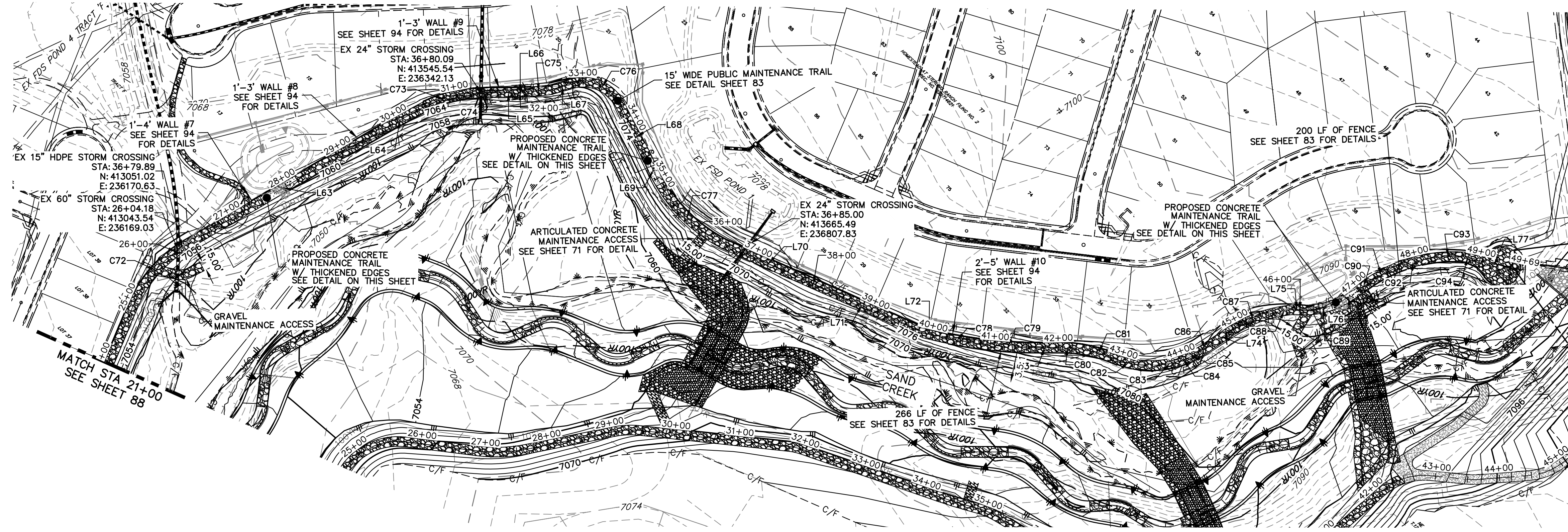
BY: [] DATE: []

No. REVISION: []

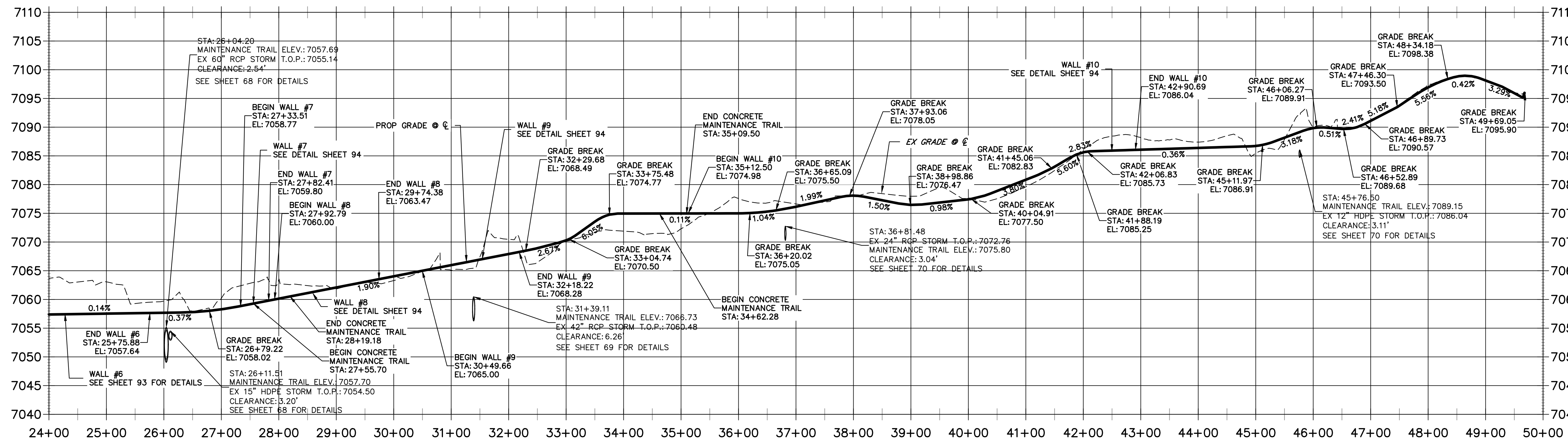
H-SCALE 1"=100'
V-SCALE 1"=10'
DATE 11/20/23
DESIGNED BY NEO
DRAWN BY NEO
CHECKED BY

SAND CREEK RESTORATION
MAINTENANCE ACCESS PLAN & PROFILE

SHEET 88 OF 121
JOB NO. 25188.04



**WEST SIDE: SAND CREEK REGIONAL TRAIL & MAINTENANCE ACCESS TRAIL PROFILE REACH 2 (2)
STA 24+00.00 TO 50+00.00**

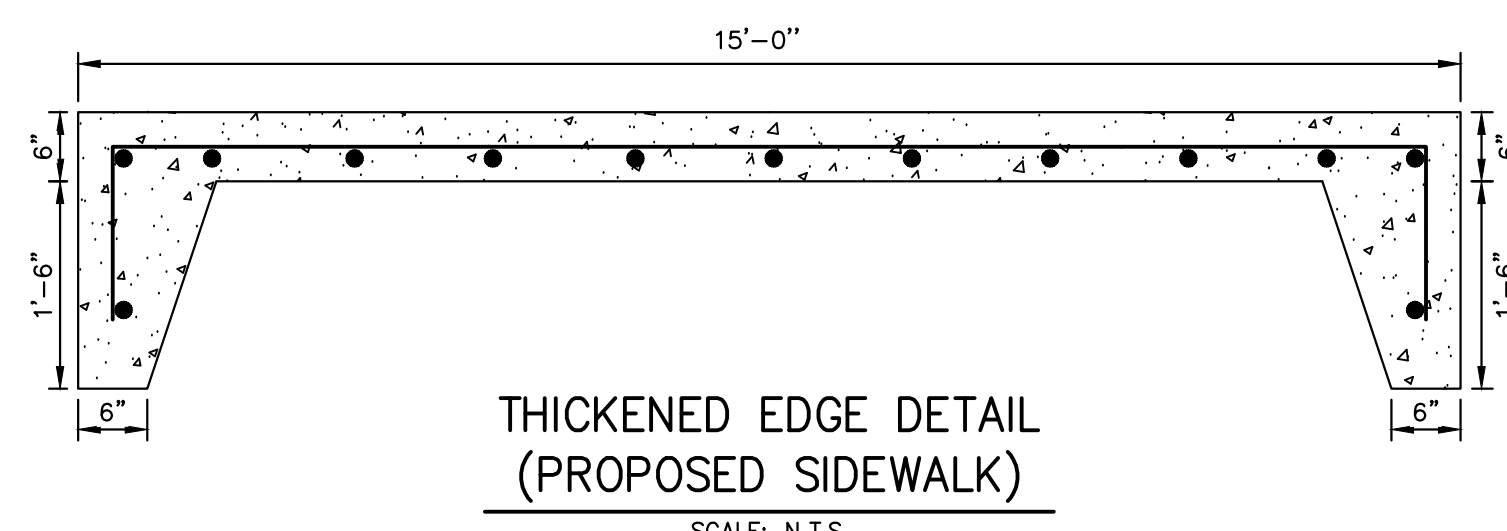


CURVE TABLE

CURVE	DELTA	RADIUS	LENGTH
C72	36°51'45"	201.15'	129.41'
C73	22°43'18"	204.34'	81.04'
C74	6°53'27"	434.92'	52.31'
C75	3°28'49"	608.08'	36.94'
C76	76°47'16"	65.42'	87.67'
C77	38°50'05"	243.92'	165.33'
C78	5°05'18"	788.83'	70.06'
C79	7°18'30"	732.60'	93.45'
C80	13°14'11"	208.18'	48.09'
C81	13°44'23"	212.18'	50.88'
C82	18°26'11"	140.49'	45.21'
C83	10°23'47"	169.13'	30.69'
C84	5°13'57"	168.44'	15.38'
C85	4°04'08"	219.86'	15.61'
C86	2°23'43"	712.74'	29.80'
C87	21°50'51"	216.05'	82.38'
C88	6°09'19"	225.56'	24.23'
C89	34°38'04"	121.21'	73.27'
C90	5°09'31"	245.57'	22.11'
C91	11°34'55"	238.43'	48.20'
C92	14°31'27"	233.08'	59.08'
C93	12°14'40"	242.11'	51.74'
C94	13°22'35"	46.54'	10.86'

LINE TABLE

LINE	BEARING	DISTANCE
L63	N16°04'48"E	351.11'
L64	N17°23'32"E	68.38'
L65	N45°41'49"E	18.46'
L66	N43°55'18"E	18.51'
L67	N31°02'29"E	40.99'
L68	S70°48'57"E	78.00'
L69	S69°23'43"E	46.22'
L70	N70°22'53"E	111.85'
L71	N70°22'53"E	212.36'
L72	N60°26'50"E	15.61'
L73	N45°38'08"E	19.93'
L74	N12°26'24"E	31.11'
L75	N47°43'42"E	9.79'
L76	N13°52'47"E	21.87'
L77	N58°12'37"E	80.86'



- BENCHMARK**
- THE TOP OF AN ALUMINUM SURVEYORS CAP, STAMPED "9853", AT THE SOUTHEAST BOUNDARY CORNER OF BARBARICK SUBDIVISION
NORTHING = 411416.273
EASTING = 235167.071
ELEVATION = 7023.42
 - THE TOP OF A RED PLASTIC SURVEYORS CAP, ILLEGIBLE, AT THE NORTHWEST BOUNDARY CORNER OF PANWEE RANCHEROS SUBDIVISION
NORTHING = 410095.404
EASTING = 235052.131
ELEVATION = 7000.40
 - THE TOP OF A RED PLASTIC SURVEYORS CAP, STAMPED "38141", AT THE SOUTHWEST BOUNDARY CORNER OF BARBARICK SUBDIVISION
NORTHING = 410095.404
EASTING = 233849.817
ELEVATION = 7030.82

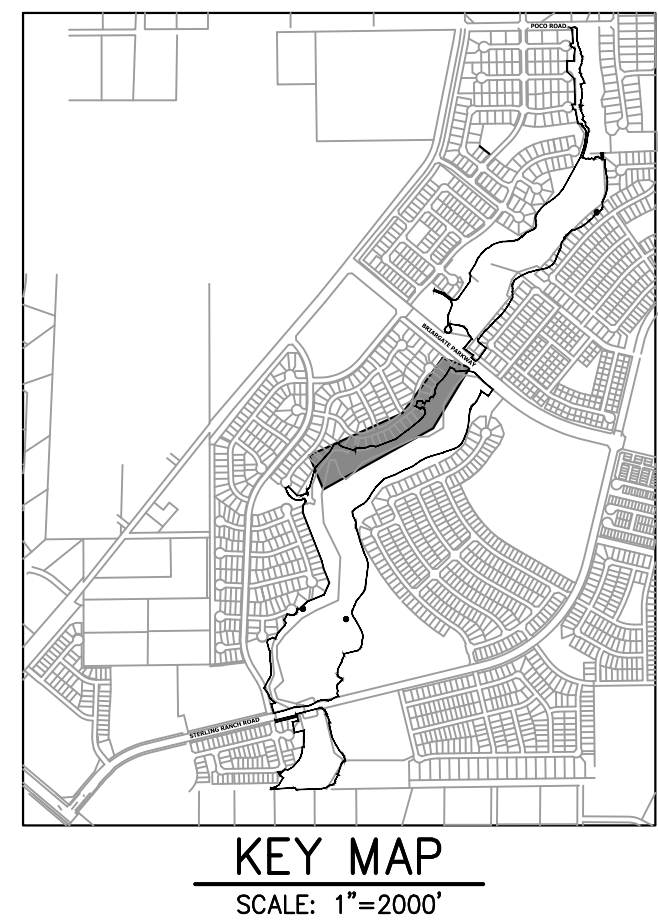
- NOTES:**
- STEEPEST ALLOWABLE GRADE IS 12%.
 - MAINTENANCE ACCESS TRAILS WITH SLOPES GREATER THAN 10% ARTICULATED CONCRETE WILL BE USED.

BASIS OF BEARINGS
THE SOUTH LINE OF THE SOUTHWEST QUARTER OF SECTION 34, TOWNSHIP 12 SOUTH, RANGE 65 WEST OF THE 6TH P.M. AS MONUMENTED AT THE SOUTHWEST CORNER OF SAID BY A 2-1/2" ALUMINUM CAP STAMPED "LS 11624" AND AT THE SOUTHEAST CORNER OF SAID SOUTHWEST QUARTER BY A 2-1/2" ALUMINUM CAP STAMPED "LS 11624", SAID LINE BEARS N89°14'14"E, A DISTANCE OF 2,722.69 FEET.

ENGINEER'S STATEMENT
PREPARED UNDER MY DIRECT SUPERVISION

MIKE A. BRAMLETT, P.E.
COLORADO P.E. 32314
FOR AND ON BEHALF OF JR ENGINEERING

32314 11/20/23



UNTIL SUCH TIME AS THESE DRAWINGS ARE APPROVED BY THE APPROPRIATE REVIEWING AGENCIES, JR ENGINEERING APPROVES THEIR USE AS DESIGNATED BY WRITTEN AUTHORIZATION.

PREPARED FOR
SR LAND, LLC
20 BOULDER CRESCENT
2ND FLOOR
COLORADO SPRINGS, CO 80903
JAMES F. MORLEY
(719) 419-3024

J.R. ENGINEERING
A Westman Company

Central 303-740-9888 • Colorado Springs 719-583-2583
Fort Collins 970-491-9888 • www.jrengineering.com

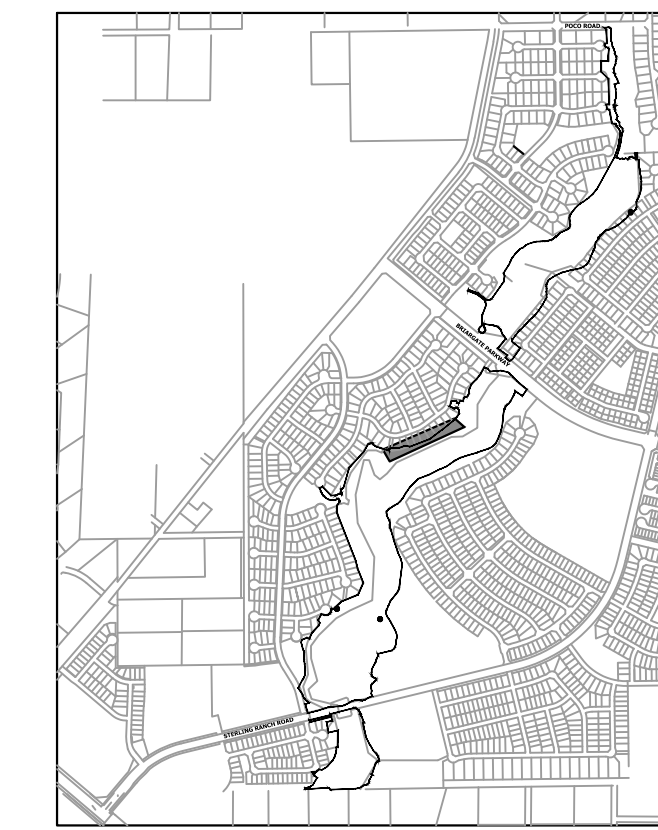
BY	DATE	No.	REVISION	H-SCALE	V-SCALE	DATE	DESIGNED BY	DRAWN BY	CHECKED BY
				1"=100'	1"=10'	11/20/23	NEO	NEO	

SAND CREEK RESTORATION

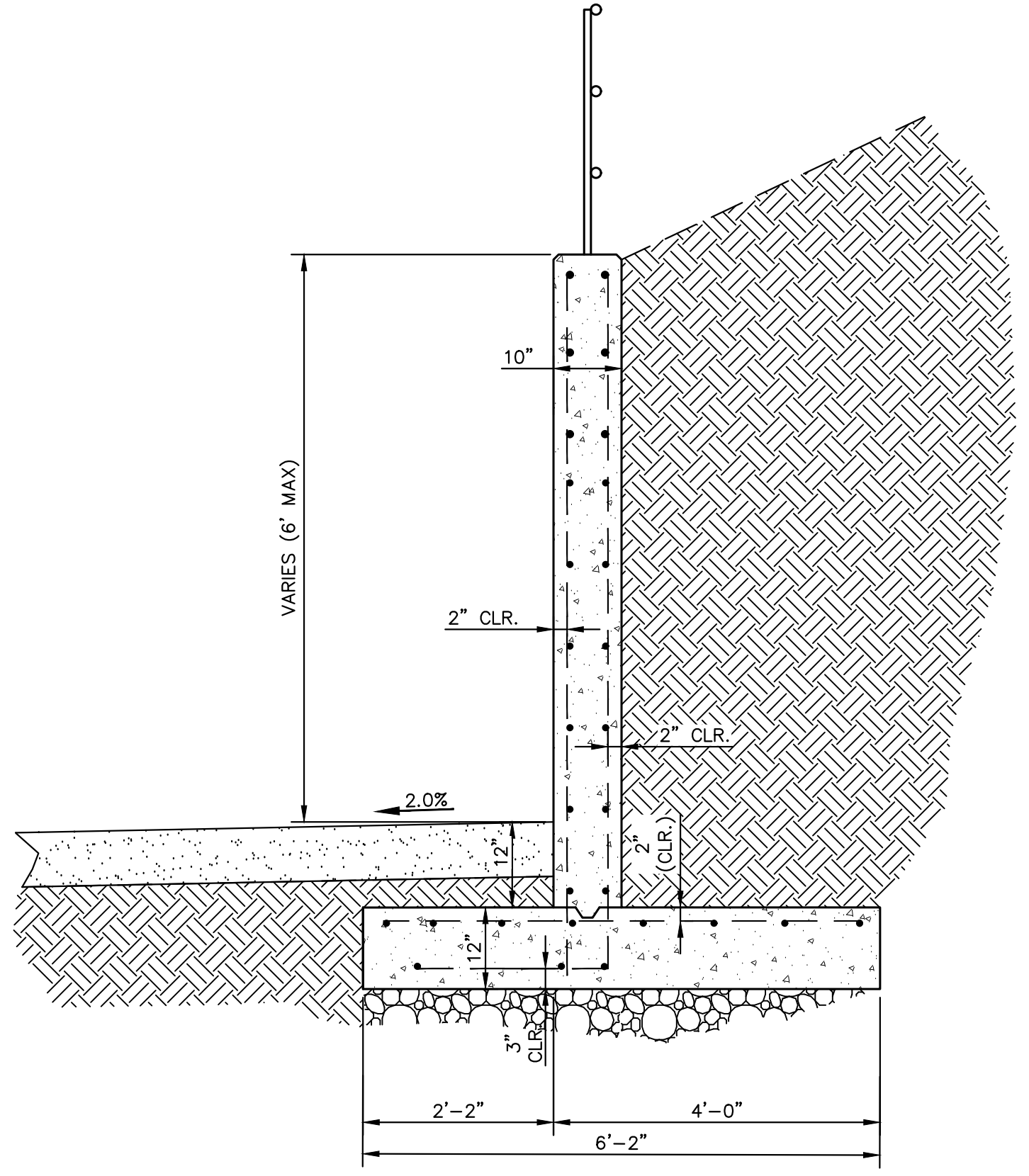
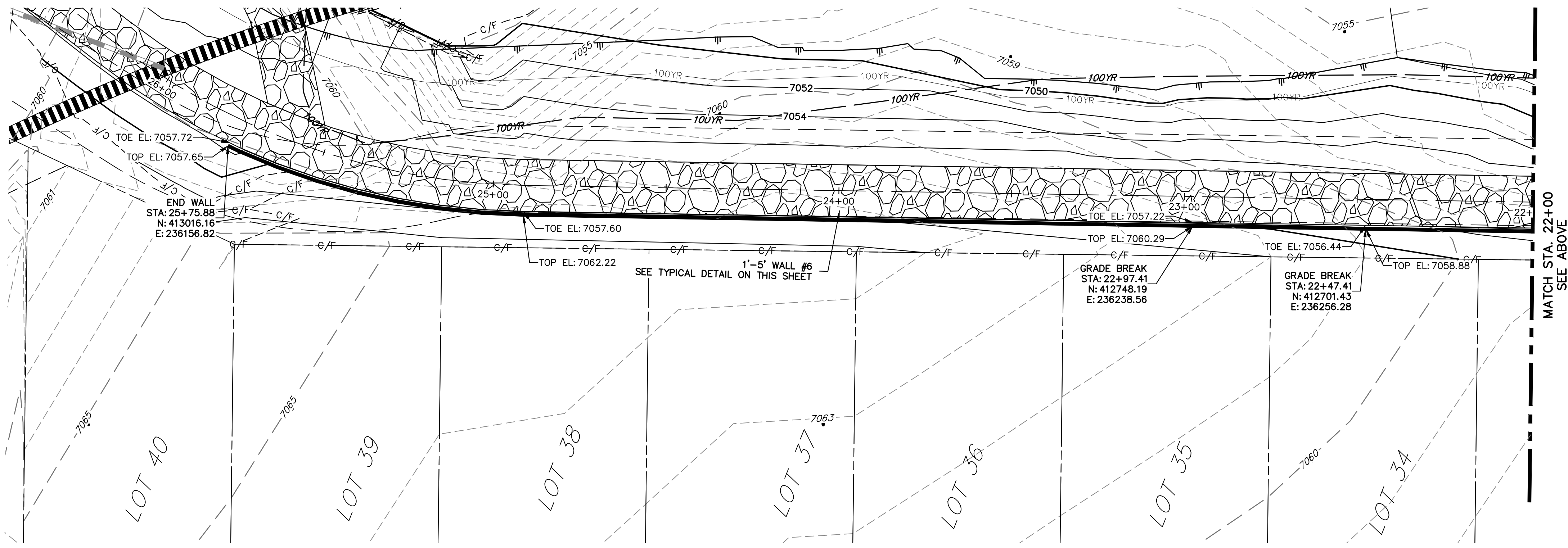
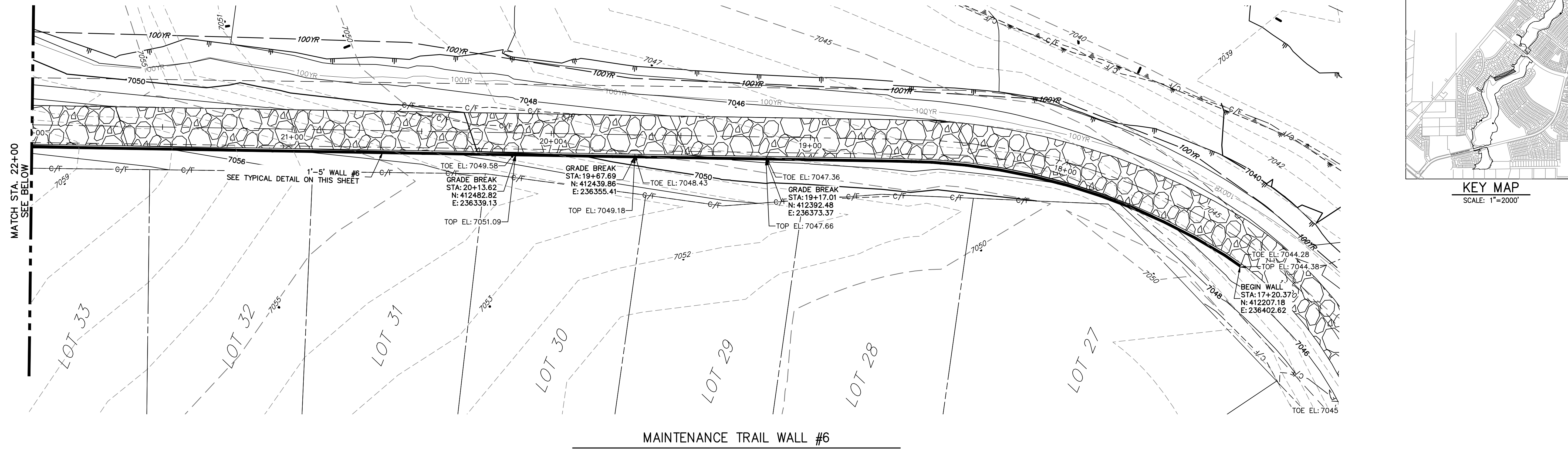
MAINTENANCE ACCESS PLAN & PROFILE

SHEET 89 OF 121

JOB NO. 25188.04



KEY MAP
SCALE: 1"=2000'

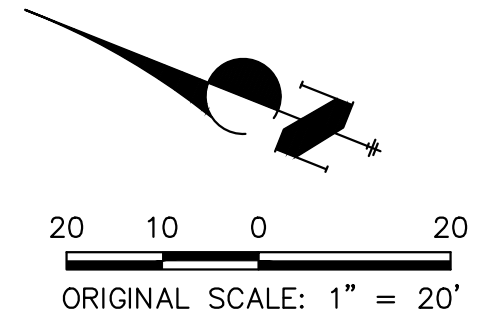


- BENCHMARK**
1. THE TOP OF AN ALUMINUM SURVEYORS CAP, STAMPED "5853", AT THE SOUTHEAST BOUNDARY CORNER OF BARBARICK SUBDIVISION
NORTHING = 411416.273
EASTING = 235167.071
ELEVATION = 7023.42
 2. THE TOP OF A RED PLASTIC SURVEYORS CAP, ILLEGIBLE, AT THE NORTHWEST BOUNDARY CORNER OF PANNEE RANCHEROS SUBDIVISION
NORTHING = 410095.404
EASTING = 235052.131
ELEVATION = 7000.40
 3. THE TOP OF A RED PLASTIC SURVEYORS CAP, STAMPED "38141", AT THE SOUTHWEST BOUNDARY CORNER OF BARBARICK SUBDIVISION
NORTHING = 411399.962
EASTING = 233849.817
ELEVATION = 7030.82

- NOTES:**
1. STEEPEST ALLOWABLE GRADE IS 12%.
 2. MAINTENANCE ACCESS TRAILS WITH SLOPES GREATER THAN 10% ARTICULATED CONCRETE WILL BE USED.

BASIS OF BEARINGS

THE SOUTH LINE OF THE SOUTHWEST QUARTER OF SECTION 34, TOWNSHIP 12 SOUTH, RANGE 65 WEST OF THE 6TH P.M. AS MONUMENTED AT THE SOUTHWEST CORNER OF SAID BY A 2-1/2" ALUMINUM CAP STAMPED "LS 11624" AND AT THE SOUTHEAST CORNER OF SAID SOUTHWEST QUARTER BY A 2-1/2" ALUMINUM CAP STAMPED "LS 11624", SAID LINE BEARS N89°14'14"E, A DISTANCE OF 2,722.69 FEET.



ENGINEER'S STATEMENT
PREPARED UNDER MY DIRECT SUPERVISION

MIKE A. BRAMLETT, P.E.
COLORADO P.E. 32314
FOR AND ON BEHALF OF JR ENGINEERING

32314
11/20/23

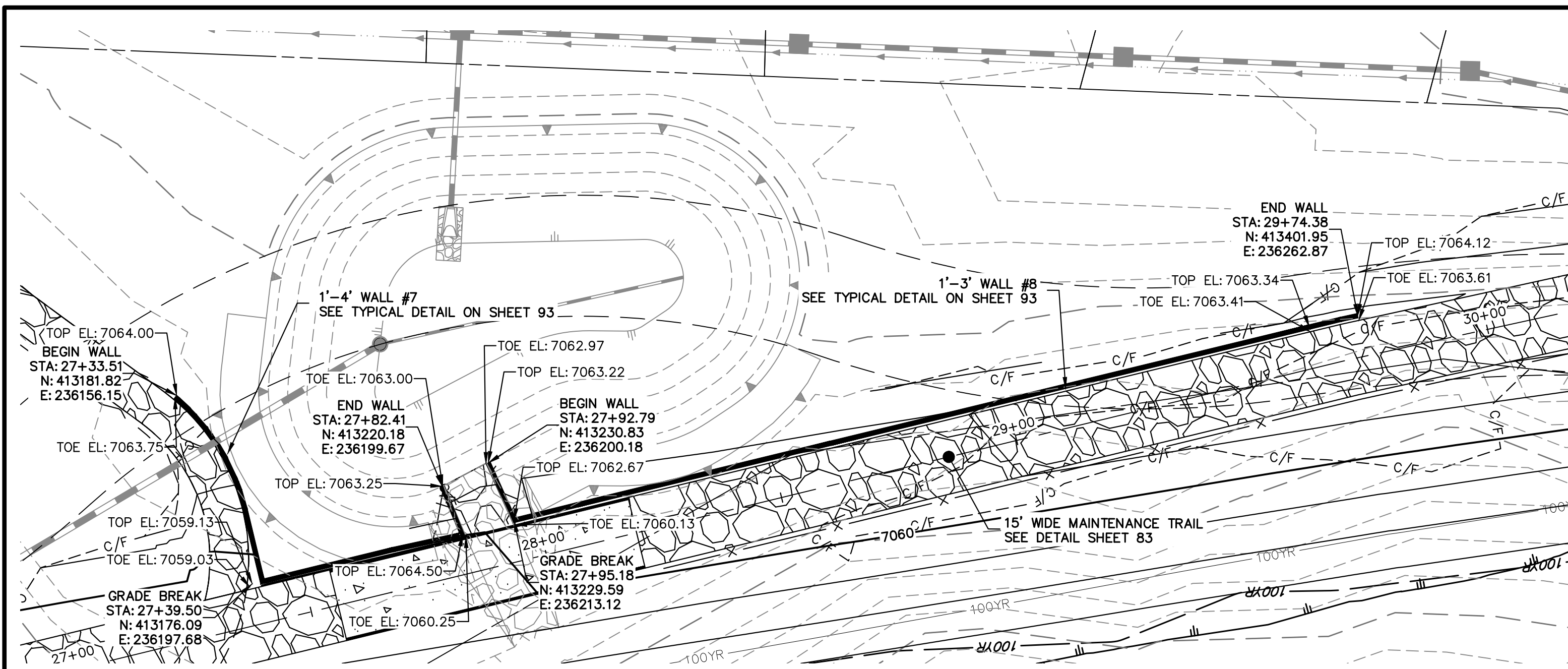
SAND CREEK RESTORATION MAINTENANCE ACCESS PLAN & PROFILE	BY	DATE	No.	REVISION
	BY	DATE		
SHEET 93 OF 121 JOB NO. 25188.04	H-SCALE	1"=20'	V-SCALE	N/A
	DATE	11/20/23	DESIGNED BY	NEO
	DRAWN BY	NEO	CHECKED BY	NEO
	<p>811 Know what's below. Call before you dig.</p> <p>ENGINEER'S STATEMENT PREPARED UNDER MY DIRECT SUPERVISION MIKE A. BRAMLETT, P.E. COLORADO P.E. 32314 FOR AND ON BEHALF OF JR ENGINEERING</p>			

PREPARED FOR
SR LAND, LLC
20 BOULDER CRESCENT
2ND FLOOR
COLORADO SPRINGS, CO 80903
JAMES F. MORLEY
(719) 419-3024

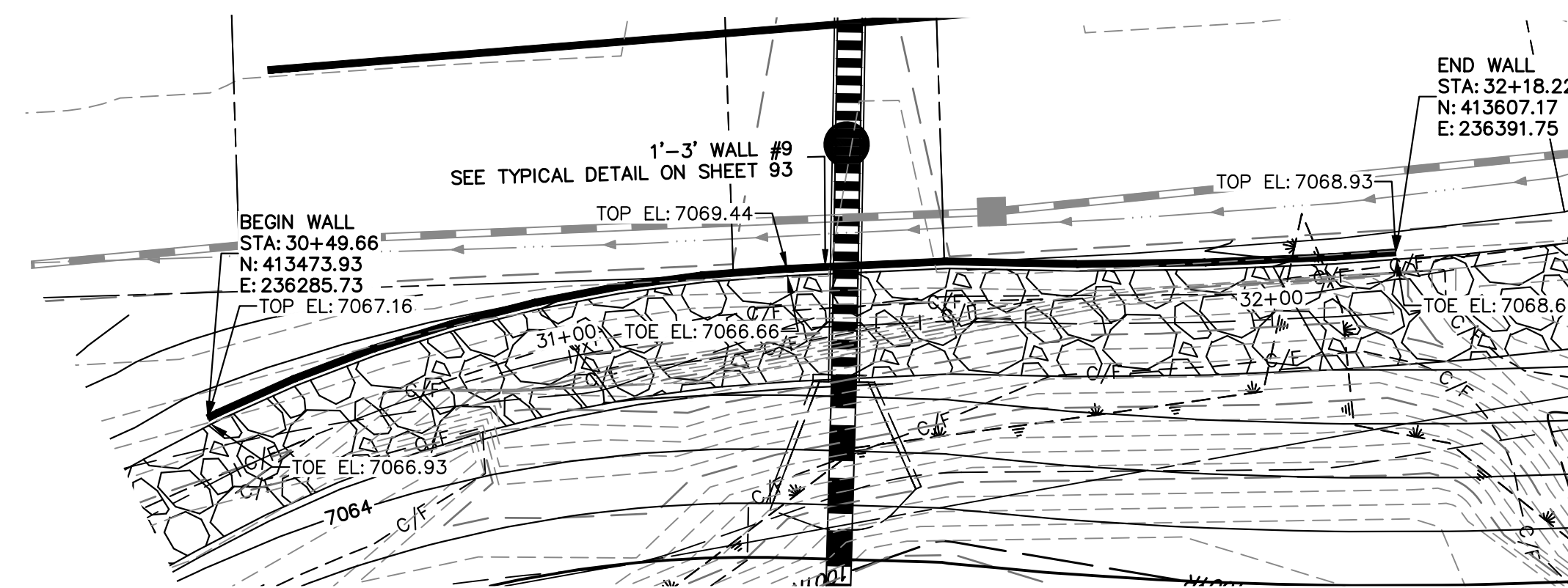
UNLESS SUCH TIME AS THESE DRAWINGS ARE APPROVED BY THE APPROPRIATE REVIEWING AGENCIES, OR ENGINEERING APPROVES THEIR USE, THESE DRAWINGS ARE DESIGNATED BY WRITTEN AUTHORIZATION.

J.R. ENGINEERING
A Westman Company
Central 303-740-9888 • Colorado Springs 719-583-2583
Fort Collins 970-491-9888 • www.jrengineering.com

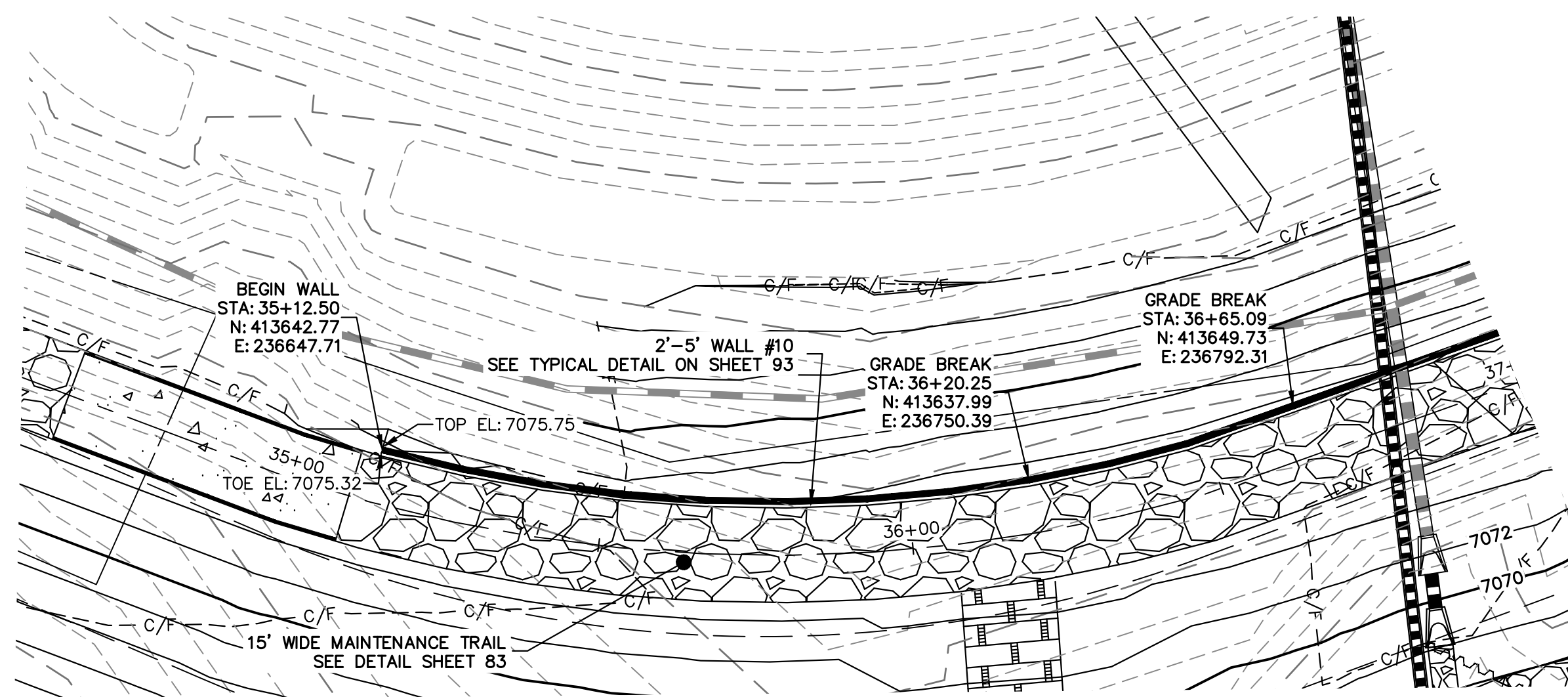
X:\25188\04\Drawings\Sheet\Drawings\Maintenance Access Plans\Profile\2518804_Maintenance Trail Wall.dwg, 03 TR11, 9/7/2024 6:57:24 PM, VaughnD



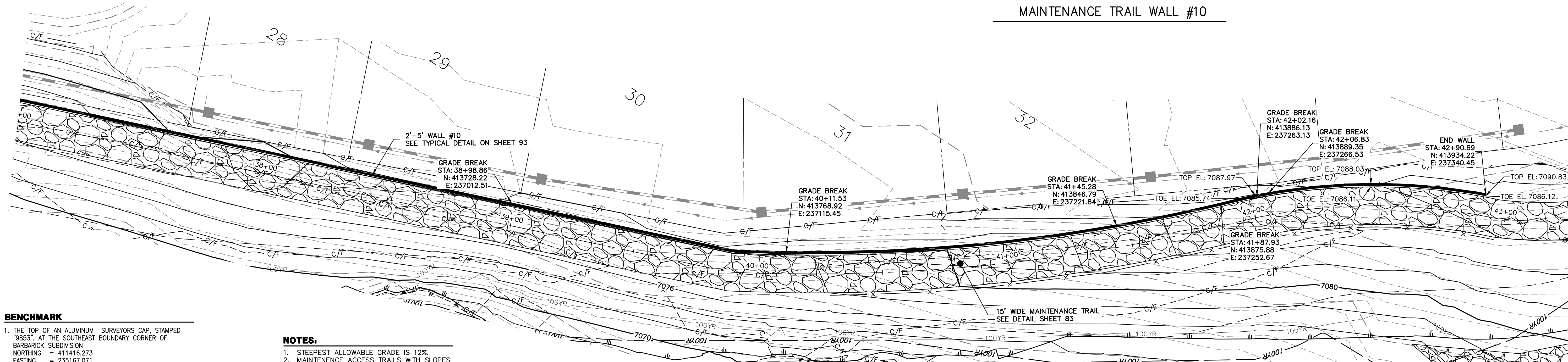
MAINTENANCE TRAIL WALLS #7 AND #8



MAINTENANCE TRAIL WALL #9



MAINTENANCE TRAIL WALL #10

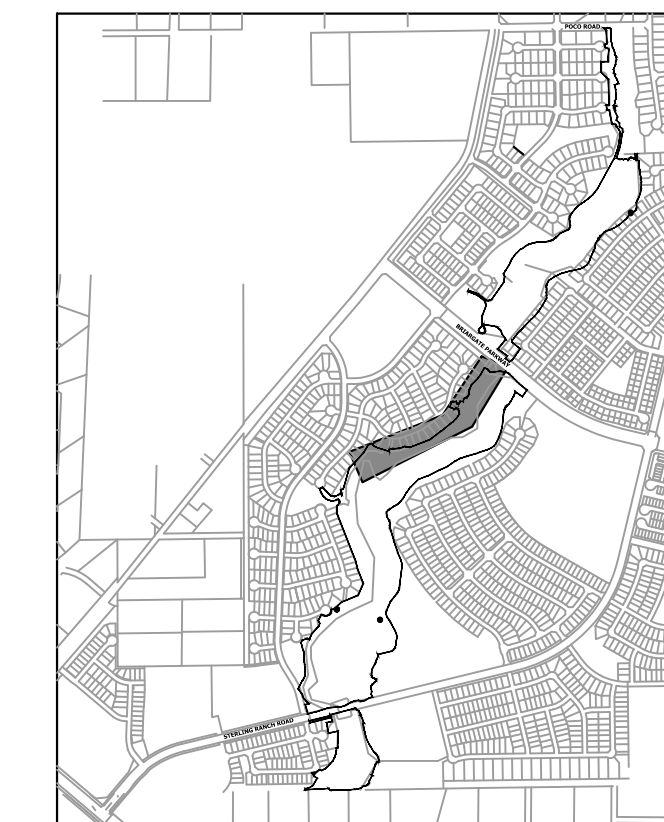


MAINTENANCE TRAIL WALL #10

- BENCHMARK**
1. THE TOP OF AN ALUMINUM SURVEYORS CAP, STAMPED "9853", AT THE SOUTHEAST BOUNDARY CORNER OF BARBARICK SUBDIVISION
 NORTHING = 411416.273
 EASTING = 235167.071
 ELEVATION = 7023.42
 2. THE TOP OF A RED PLASTIC SURVEYORS CAP, ILLEGIBLE, AT THE NORTHWEST BOUNDARY CORNER OF PANNEE RANCHEROS SUBDIVISION
 NORTHING = 410025.404
 EASTING = 235052.131
 ELEVATION = 7000.40
 3. THE TOP OF A RED PLASTIC SURVEYORS CAP, STAMPED "38141", AT THE SOUTHWEST CORNER OF BARBARICK SUBDIVISION
 NORTHING = 411399.962
 EASTING = 233849.817
 ELEVATION = 7030.82

- NOTES:**
1. STEEPEST ALLOWABLE GRADE IS 12%.
 2. MAINTENANCE ACCESS TRAILS WITH SLOPES GREATER THAN 10% ARTICULATED CONCRETE WILL BE USED.

BASIS OF BEARINGS
 THE SOUTH LINE OF THE SOUTHWEST QUARTER OF SECTION 34, TOWNSHIP 12 SOUTH, RANGE 65 WEST OF THE 6TH P.M., AS MONUMENTED AT THE SOUTHWEST CORNER OF SAID BY A 2-1/2" ALUMINUM CAP STAMPED "LS 11624" AND AT THE SOUTEAST CORNER OF SAID SOUTHWEST QUARTER BY A 2-1/2" ALUMINUM CAP STAMPED "LS 11624", SAID LINE BEARS N89°14'14"E, A DISTANCE OF 2,722.69 FEET.



KEY MAP
SCALE: 1"=2000'

UNTIL SUCH TIME AS THESE DRAWINGS ARE APPROVED BY THE APPROPRIATE REVIEWING AGENCIES, OR ENGINEERING APPROVES THEIR USE, THESE DRAWINGS ARE DESIGNATED BY WRITTEN AUTHORIZATION.

PREPARED FOR
SR LAND, LLC
 20 BOULDER CRESCENT
 2ND FLOOR
 COLORADO SPRINGS, CO 80903
 JAMES F. MORLEY
 (719) 419-3024

J.R. ENGINEERING
 A Westman Company

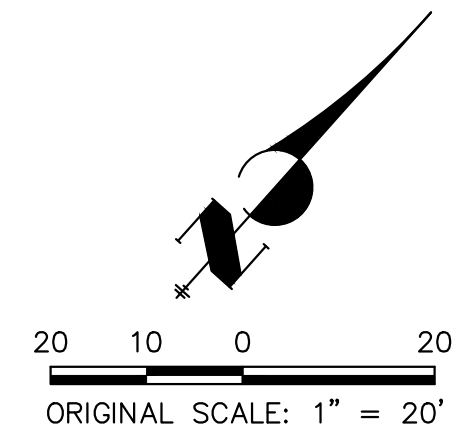
 Centennial 303-740-9888 • Colorado Springs 719-583-2583
 Fort Collins 970-491-9888 • www.jrengineering.com

BY	DATE	NO.	REVISION


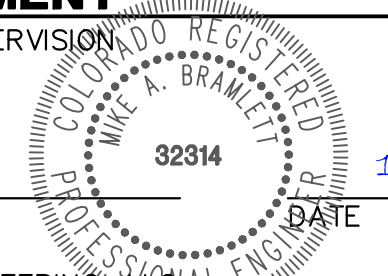
H-SCALE	V-SCALE	DATE	DESIGNED BY	DRAWN BY	CHECKED BY
1"=20'	N/A	11/20/23	NEO	NEO	

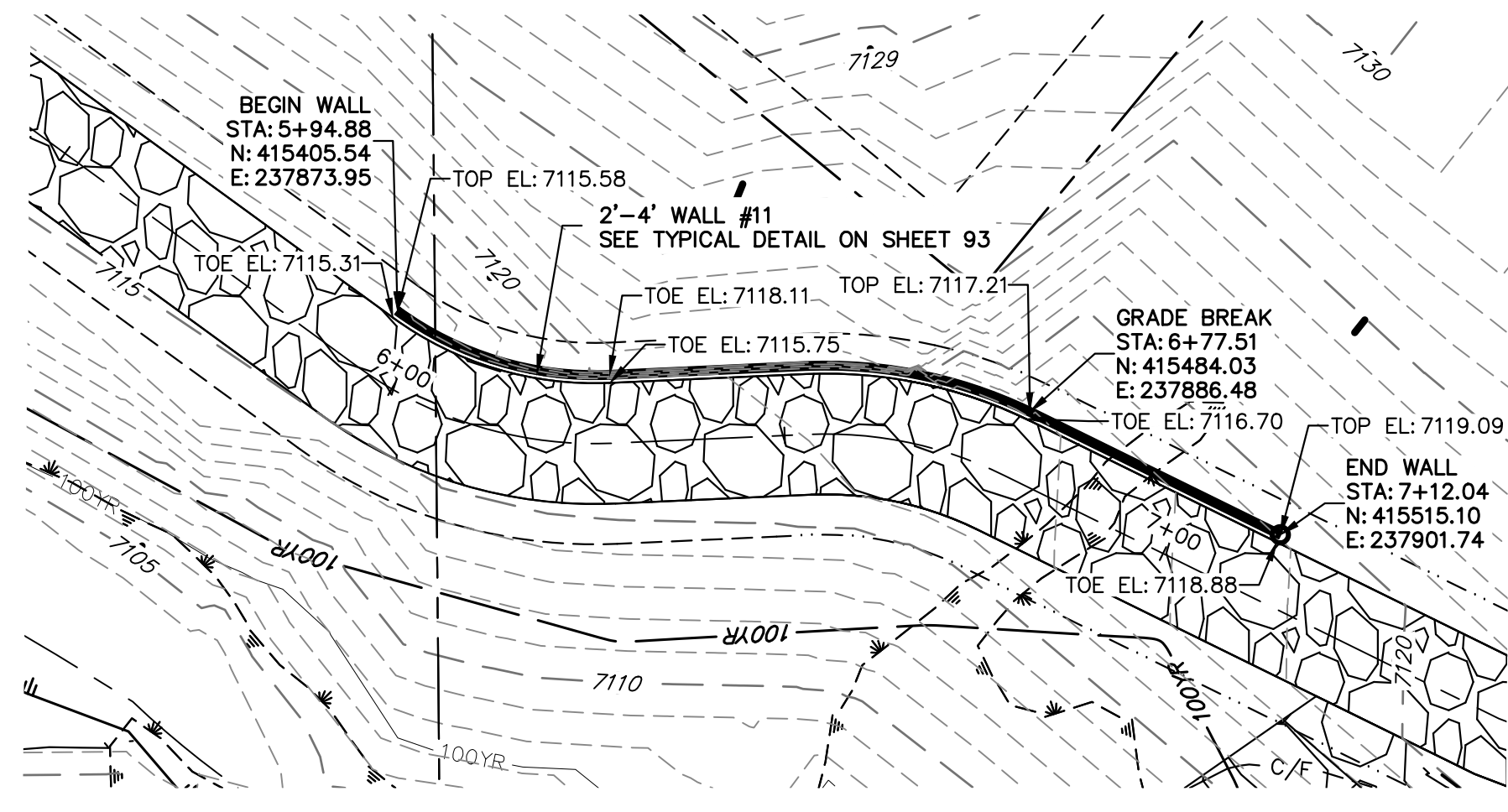
SAND CREEK RESTORATION
MAINTENANCE ACCESS PLAN & PROFILE

SHEET 94 OF 121
 JOB NO. 25188.04

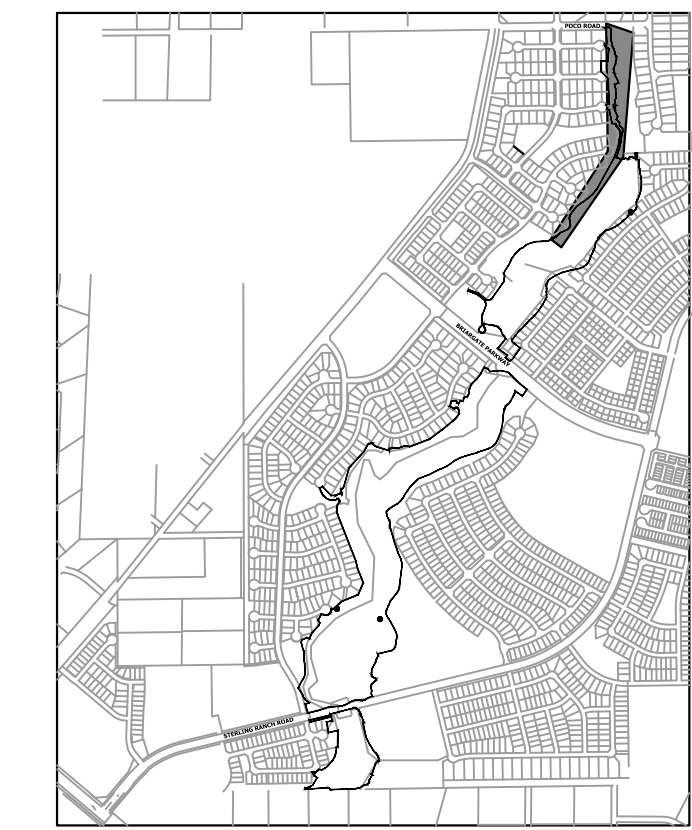


811
 Know what's below.
 Call before you dig.

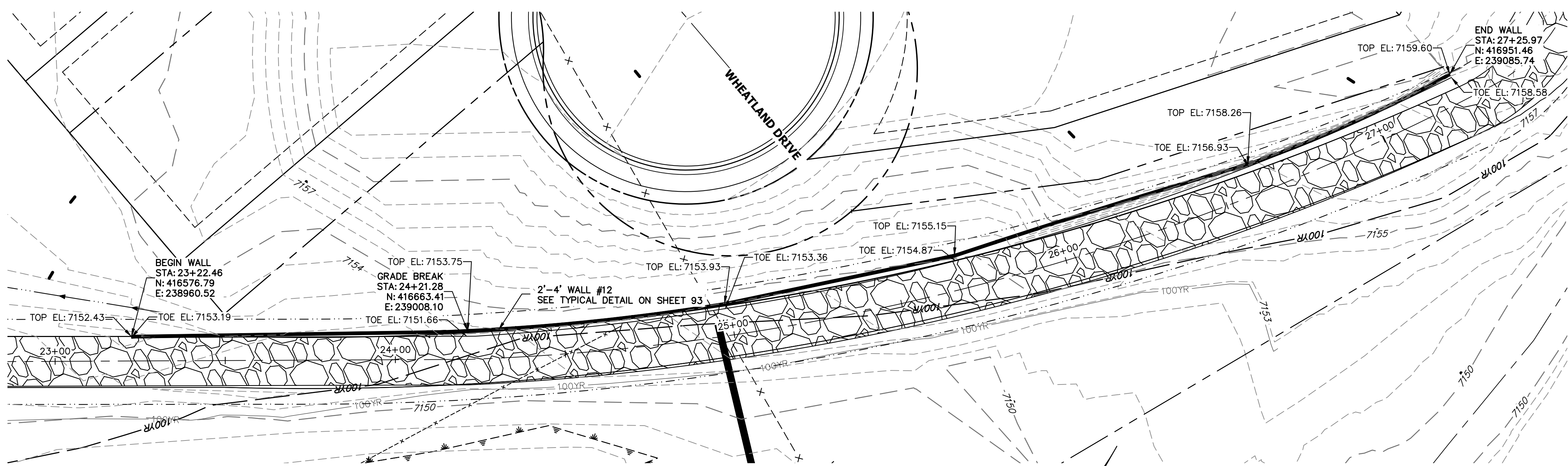
ENGINEER'S STATEMENT
 PREPARED UNDER MY DIRECT SUPERVISION


 MIKE A. BRAMLETT, P.E.
 COLORADO P.E. 32314
 FOR AND ON BEHALF OF JR ENGINEERING



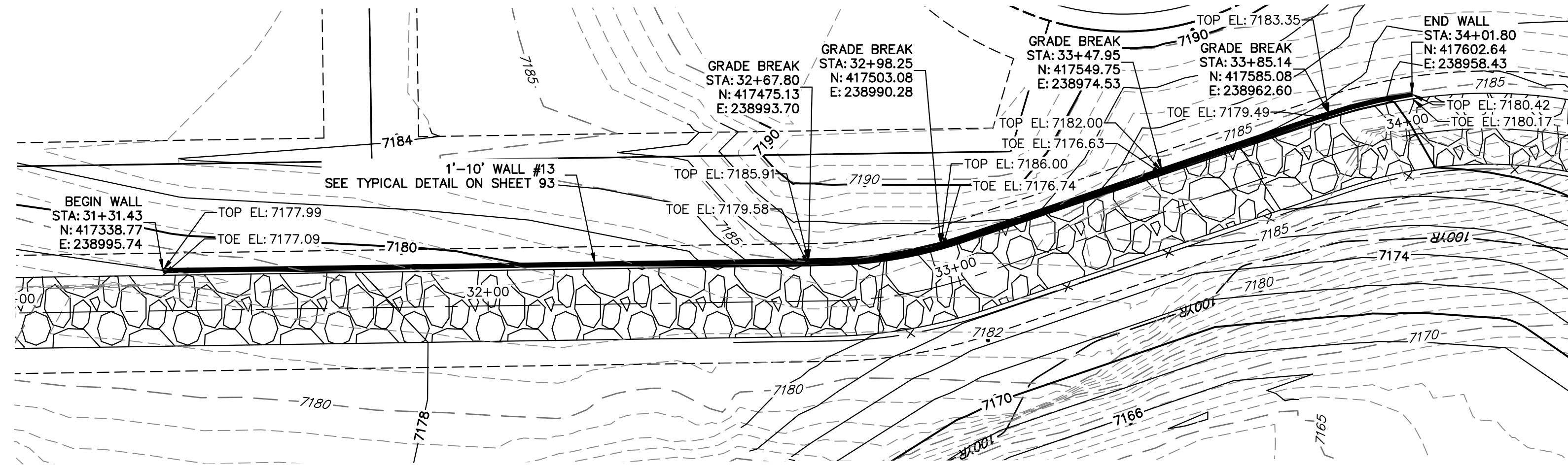
MAINTENANCE TRAIL WALL #11



KEY MAP
SCALE: 1"=2000'



MAINTENANCE TRAIL WALL #12

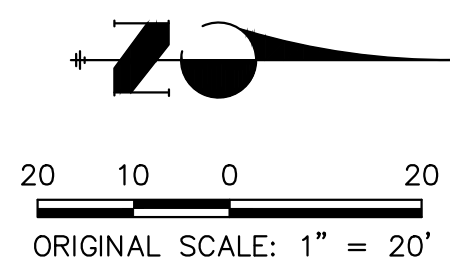


MAINTENANCE TRAIL WALL #13

- BENCHMARK**
- THE TOP OF AN ALUMINUM SURVEYORS CAP, STAMPED "9853", AT THE SOUTHEAST BOUNDARY CORNER OF BARBARICK SUBDIVISION
NORTHING = 411416.273
EASTING = 235167.071
ELEVATION = 7023.42
 - THE TOP OF A RED PLASTIC SURVEYORS CAP, ILLEGIBLE, AT THE NORTHWEST BOUNDARY CORNER OF PANNEE RANCHEROS SUBDIVISION
NORTHING = 410095.404
EASTING = 235052.131
ELEVATION = 7000.40
 - THE TOP OF A RED PLASTIC SURVEYORS CAP, STAMPED "38141", AT THE SOUTHWEST BOUNDARY CORNER OF BARBARICK SUBDIVISION
NORTHING = 411399.962
EASTING = 233849.817
ELEVATION = 7030.82

- NOTES:**
- STEEPEST ALLOWABLE GRADE IS 12%.
 - MAINTENANCE ACCESS TRAILS WITH SLOPES GREATER THAN 10% ARTICULATED CONCRETE WILL BE USED.

BASIS OF BEARINGS
THE SOUTH LINE OF THE SOUTHWEST QUARTER OF SECTION 34, TOWNSHIP 12 SOUTH, RANGE 65 WEST OF THE 6TH P.M. AS MONUMENTED AT THE SOUTHWEST CORNER OF SAID BY A 2-1/2" ALUMINUM CAP STAMPED "LS 11624" AND AT THE SOUTHEAST CORNER OF SAID SOUTHWEST QUARTER BY A 2-1/2" ALUMINUM CAP STAMPED "LS 11624", SAID LINE BEARS N89°14'14"E, A DISTANCE OF 2,722.69 FEET.



ENGINEER'S STATEMENT
PREPARED UNDER MY DIRECT SUPERVISION

Mike Bramlett

MIKE A. BRAMLETT, P.E.
COLORADO P.E. 32314
FOR AND ON BEHALF OF JR ENGINEERING

32314 11/20/23

PREPARED FOR SR LAND, LLC 20 BOULDER CRESCENT 2ND FLOOR COLORADO SPRINGS, CO 80903 JAMES F. MORLEY (719) 419-3024	UNTIL SUCH TIME AS THESE DRAWINGS ARE APPROVED BY THE APPROPRIATE REVIEWING AGENCIES, JR ENGINEERING APPROVES THEIR USE AS DESIGNATED BY WRITTEN AUTHORIZATION.	
	SAND CREEK RESTORATION MAINTENANCE ACCESS PLAN & PROFILE	SHEET 95 OF 121 JOB NO. 25188.04
J.R. ENGINEERING A Westman Company Centennial 303-740-9888 • Colorado Springs 719-583-2583 Fort Collins 970-491-9888 • www.jrengineering.com	BY DATE NO. REVISION H-SCALE 1"=20' V-SCALE N/A DATE 11/20/23 DESIGNED BY NEO DRAWN BY NEO CHECKED BY	REVISION DATE