

GENERAL NOTES

- ALL UTILITY CONSTRUCTION TO BE CONDUCTED IN CONFORMANCE WITH THE CURRENT WOODMEN HILLS METROPOLITAN DISTRICT (WHMD, THE DISTRICT) SPECIFICATIONS.
- ALL PLANS ON THE JOB SITE SHALL BE SIGNED BY THE DISTRICT AND THE DISTRICT'S ENGINEER. ANY REVISION TO THE PLANS SHALL BE SO NOTED WITH THE OLD DRAWING MARKED NOT VALID.
- ALL STATIONING IS CENTER LINE UNLESS OTHERWISE NOTED. ALL ELEVATIONS ARE CENTER LINE UNLESS OTHERWISE NOTED.
- ALL MATERIALS AND WORKMANSHIP SHALL BE SUBJECT TO INSPECTION BY THE DISTRICT. THE DISTRICT RESERVES THE RIGHT TO ACCEPT OR REJECT ANY SUCH MATERIALS AND WORKMANSHIP THAT DOES NOT CONFORM TO ITS STANDARDS AND SPECIFICATIONS.
- ALL OVER--LOT GRADING MUST BE COMPLETED TO WITHIN ONE (1) FOOT OF FINAL GRADE PRIOR TO INSTALLATION OF WATER AND WASTEWATER INFRASTRUCTURE.
- ALL WATER AND SEWER SERVICE LOCATIONS SHALL BE CLEARLY MARKED ON EITHER THE CURB HEAD OR THE FACE OF THE CURB, WITH AN "S" FOR SEWER AND A "W" FOR WATER.
- DUCTILE IRON PIPES, INCLUDING FITTINGS, VALVES AND FIRE HYDRANTS, SHALL BE WRAPPED WITH POLYETHYLENE TUBING, DOUBLE BONDED AT EACH JOINT AND ELECTRICALLY ISOLATED. BONDING AND ANODE CONNECTIONS SHALL BE THOROUGHLY COATED WITH BITUMINOUS COATINGS.
- ALL DUCTILE IRON PIPE LESS THAN 12 INCHES AND FITTINGS SHALL HAVE CATHODIC PROTECTION USING TWO NO. 6 WIRES WITH 17 LB. MAGNESIUM ANODES EVERY 400 FEET AND 9 LB. MAGNESIUM ANODES AT EACH FITTING. ALL DUCTILE IRON PIPE 12 INCHES AND GREATER AND FITTINGS SHALL HAVE CATHODIC PROTECTION USING TWO NO. 6 WIRES WITH 17 LB. MAGNESIUM ANODES EVERY 300 FEET AND 9 LB. MAGNESIUM ANODES AT EACH FITTING.
- ALL PIPE MATERIAL, BACKFILL AND INSTALLATION SHALL CONFORM TO THE APPLICABLE SPECIFICATIONS OF THE CITY OF COLORADO SPRINGS, COLORADO DEPARTMENT OF TRANSPORTATION, EL PASO COUNTY DEPARTMENT OF TRANSPORTATION, COLORADO SPRINGS UTILITIES AND THE GEOTECHNICAL ENGINEER.
- COMPACTION TESTS SHALL BE 95% STANDARD PROCTOR AS DETERMINED BY ASTM D698, UNLESS OTHERWISE APPROVED BY THE DISTRICT OR HIGHER STANDARD AS IMPOSED BY ANOTHER AGENCIES HAVING RIGHT-OF-WAY JURISDICTION. THIS SHALL INCLUDE ALL VALVES, FIRE HYDRANT RUNS, WATER & SEWER SERVICE LINES AND MANHOLES. ALL REPORTS SHALL BE SUBMITTED TO THE DISTRICT FOR REVIEW AND APPROVAL.
- THE LOCATION OF ALL EXISTING UTILITIES SHOWN ON THE DRAWINGS ARE APPROXIMATE ONLY. THE LOCATION OF ALL UTILITIES SHALL BE FIELD VERIFIED PRIOR TO COMMENCING CONSTRUCTION ACTIVITIES. THE DISTRICT SHALL BE NOTIFIED OF ANY DEVIATIONS TO THE LINE AND/OR GRADE AS DEPICTED ON THE PLANS. CONTRACTOR SHALL SUBMIT TO THE DISTRICT AND THE ENGINEER OF RECORD A REPORT OF THE FIELD VERIFIED INFORMATION PRIOR TO THE START OF CONSTRUCTION.
- ALL BENDS SHALL BE FIELD STAKED PRIOR TO THE START OF CONSTRUCTION.
- BENDS, DEFLECTION & CUT PIPE LENGTHS SHALL BE USED TO HOLD HORIZONTAL ALIGNMENT OF SEWER AND WATER LINES TO NO MORE THAN 0.5' FROM THE DESIGNED ALIGNMENT. CONSTRUCTION STAKES TO BE AT 25' INTERVALS ALONG CURVES TO ASSURE LOCATION OF PIPE LINE CONSTRUCTION.
- AT ALL LOCATIONS WHERE CAP AND STUB IS NOTED ON DRAWINGS, PROVIDE A PLUG AT THE END OF THE PIPE JOINT NEAREST THE SPECIFIED STATION. PROVIDE A REVERSE ANCHOR AT ALL WATER LINE PLUGS.
- ALL UNUSED SALVAGED WATER UTILITY MATERIAL SHALL BE RETURNED TO THE METROPOLITAN DISTRICT AS REQUESTED.
- AT THE CONTRACTOR'S EXPENSE, ALL UTILITY MAINS SHALL BE SUPPORTED AND PROTECTED SUCH THAT THEY SHALL FUNCTION CONTINUOUSLY DURING CONSTRUCTION OPERATIONS. SHOULD A UTILITY MAIN FAIL AS A RESULT OF THE CONTRACTOR'S OPERATION, IT SHALL BE REPLACED IMMEDIATELY BY THE CONTRACTOR OR BY THE DISTRICT AT FULL COST OF LABOR AND MATERIALS TO THE CONTRACTOR/DEVELOPER.
- PUMPING OR BYPASS OPERATIONS SHALL BE REVIEWED AND APPROVED BY BOTH THE DISTRICT AND THE DISTRICT ENGINEER PRIOR TO EXECUTION.
- THE CONTRACTOR SHALL REPLACE OR REPAIR DAMAGE TO ALL SURFACE IMPROVEMENTS, INCLUDING BUT NOT LIMITED TO FENCES, LANDSCAPING, CURB AND GUTTER AND/OR ASPHALT THAT MAY BE CAUSED DURING CONSTRUCTION.
- ALL CONTRACTORS WORKING ON OR NEAR A WATER OR SEWER FACILITY (TO INCLUDE SERVICE LINES) SHALL HAVE LIABILITY INSURANCE NAMING THE DISTRICT AS AN ADDITIONAL INSURED AND SHALL PROVIDE A CURRENT COPY OF WORKERS COMPENSATION INSURANCE ON FILE WITH THE DISTRICT. NO WORK CAN PROCEED WITHOUT CURRENT CERTIFICATES ON FILE AT THE DISTRICTS' OFFICE.
- THE CONTRACTOR SHALL NOTIFY THE DISTRICT AND ALL AFFECTED UTILITY COMPANIES ADJACENT TO THE PROPOSED UTILITY CONSTRUCTION A MINIMUM OF 48 HOURS AND A MAXIMUM OF 96 HOURS PRIOR TO THE START OF CONSTRUCTION. A WEEKLY CONSTRUCTION MEETING SHALL BE REQUIRED WITH THE CONTRACTOR, DISTRICT ENGINEER AND ALL OTHER PARTIES AS DEEMED NECESSARY BY THE DISTRICT.
- COMMENCEMENT OF CONSTRUCTION OF WATER/SEWER SYSTEMS WITHIN METROPOLITAN DISTRICT:
 - PRIOR TO THE START OF CONSTRUCTION, A PRE-CONSTRUCTION MEETING IS REQUIRED. A MINIMUM OF 48 HOURS IN ADVANCE OF COMMENCEMENT OF WORK. A REPRESENTATIVE OF THE OWNER OR DEVELOPER, A REPRESENTATIVE OF THE CONTRACTOR AND DESIGN ENGINEER ARE REQUIRED TO ATTEND. CONTACT THE DISTRICT TO SCHEDULE THE PRE-CONSTRUCTION MEETING. NO PRE-CONSTRUCTION MEETING CAN BE SCHEDULED PRIOR TO FOUR (4) SIGNED/APPROVED PLAN SETS ARE RECEIVED BY THE DISTRICT.
 - THE CONTRACTOR IS REQUIRED TO NOTIFY THE DISTRICT A MINIMUM OF 48 HOURS AND A MAXIMUM OF 2 WEEKS PRIOR TO THE START OF CONSTRUCTION. THE CONTRACTOR SHALL ALSO NOTIFY AFFECTED UTILITY COMPANIES AT LEAST 48 HOURS PRIOR TO THE START OF CONSTRUCTION ADJACENT TO THE KNOWN UTILITY LINES.
- TESTING OF FACILITIES:
 - THE CONTRACTOR SHALL NOTIFY THE DISTRICT A MINIMUM OF 48 HOURS AND A MAXIMUM OF 96 HOURS PRIOR TO THE START OF ANY TESTING.
 - ALL SECTIONS OF WATER LINE ARE TO MEET THE FOLLOWING PRESSURE TESTING REQUIREMENTS
 - TEST 100 % OF ALL LINES
 - MUST PASS PRESSURE TEST TO 200 PSI FOR TWO HOURS (UNLESS OTHERWISE APPROVED ON THE PLANS).
 - ALL SANITARY SEWER FACILITIES ARE TO MEET THE FOLLOWING TESTING REQUIREMENTS
 - ALL LINES SHALL BE JET CLEANED PRIOR TO VACUUM OR PRESSURE TESTING
 - ALL MANHOLES SHALL BE VACUUM TESTED WITH DISTRICT STAFF PRESENT PRIOR TO CCTV INSPECTION.
 - SEWER MAINS TO BE PRESSURE TEST PRIOR TO CCTV INSPECTION
 - ALL LINES SHALL BE CCTV INSPECTED AND VIDEO SHALL TO BE SUBMITTED TO THE DISTRICT FOR REVIEW AND APPROVAL.
- PRELIMINARY ACCEPTANCE SHALL BE DEFINED AS THE POINT IN TIME THAT THE DISTRICT ACCEPTS THE FACILITY FOR USE. ALL SURFACE IMPROVEMENTS AND RESTORATION SHALL BE COMPLETED WITHIN 30 DAYS OF COMMENCEMENT. SHOULD THE CONTRACTOR FAIL TO COMPLETE ALL SURFACE IMPROVEMENTS AND RESTORATION WITHIN 30 DAYS OF COMMENCEMENT OF SERVICE, THE DISTRICT, AT THEIR DISCRETION, MAY ELECT TO COMPLETE THE IMPROVEMENTS AT THE CONTRACTORS COST.
- FINAL ACCEPTANCE BY THE DISTRICT OF ANY LINE OR SYSTEM SHALL NOT OCCUR UNTIL COMPLETION OF FINAL ASPHALT LAYERS AND/OR FINAL COMPLETION AND/OR RESTORATION OF ALL SURFACE IMPROVEMENTS. THE WARRANTY PERIOD FOR ALL FACILITIES PRIOR TO FINAL ACCEPTANCE SHALL BE 24 MONTHS COMMENCING AFTER PRELIMINARY ACCEPTANCE.
- ACCEPTANCE:
 - THE DISTRICT MAY GIVE PRELIMINARY ACCEPTANCE ONCE ALL OF THE TESTS ON ALL THE LINES HAVE BEEN COMPLETED AND A WALK--THRU HAS OCCURRED.
 - A SECOND ACCEPTANCE MAY OCCUR ONCE FIRST LIFT OF ASPHALT GOES DOWN AND A SECOND WALK--THRU OF THE SYSTEM OCCURS. IF ALL FACILITIES ARE CLEAN AND ACCESSIBLE, A FINAL ACCEPTANCE MAY OCCUR (THE DISTRICT MAY REQUIRE CLEANING AND RE--VIDEO OF THE SYSTEM, DEPENDING ON THE SEVERITY OF THE CONTAMINATION).
- ALL WATER AND SEWER MAINS, INCLUDING SERVICE LINES, SHALL HAVE "AS--BUILT" DRAWINGS PREPARED AND APPROVED PRIOR TO PRELIMINARY ACCEPTANCE BY THE DISTRICT.
- ALL COMMERCIAL/BUSINESS DEVELOPMENTS SHALL HAVE AN EIGHT INCH (MIN.) WATER MAIN LOOPED THROUGH THE PROPOSED PROPERTY WITH GATE VALVES LOCATED WHERE THE MAIN ENTERS THE PROPERTY LINE. AN EIGHT INCH SEWER MAIN SHALL BE INSTALLED FOR SERVICE TO COMMERCIAL/BUSINESS DEVELOPMENTS, AND A MANHOLE SHALL BE LOCATED WHERE THE MAIN ENTERS THE PROPERTY. THE END OF THE MAINS SHALL BE MARKED WITH THE APPROPRIATE COLORED CARSONITE MARKER ALONG WITH TRACER WIRE.
- AFTER REVIEW AND APPROVAL OF PLANS FOR THE EXTENSION OF LINES, FACILITIES AND/OR SERVICES, CONSTRUCTION MUST BE COMMENCED WITHIN 18 MONTHS FOR RESIDENTIAL SUBDIVISIONS AND 12 MONTHS FOR ANY COMMERCIAL INSTALLATIONS.
- INSPECTION FEES: CALL THE DISTRICT (719-495-2500) FOR FEE SCHEDULE.

HOMESTEAD AT STERLING RANCH

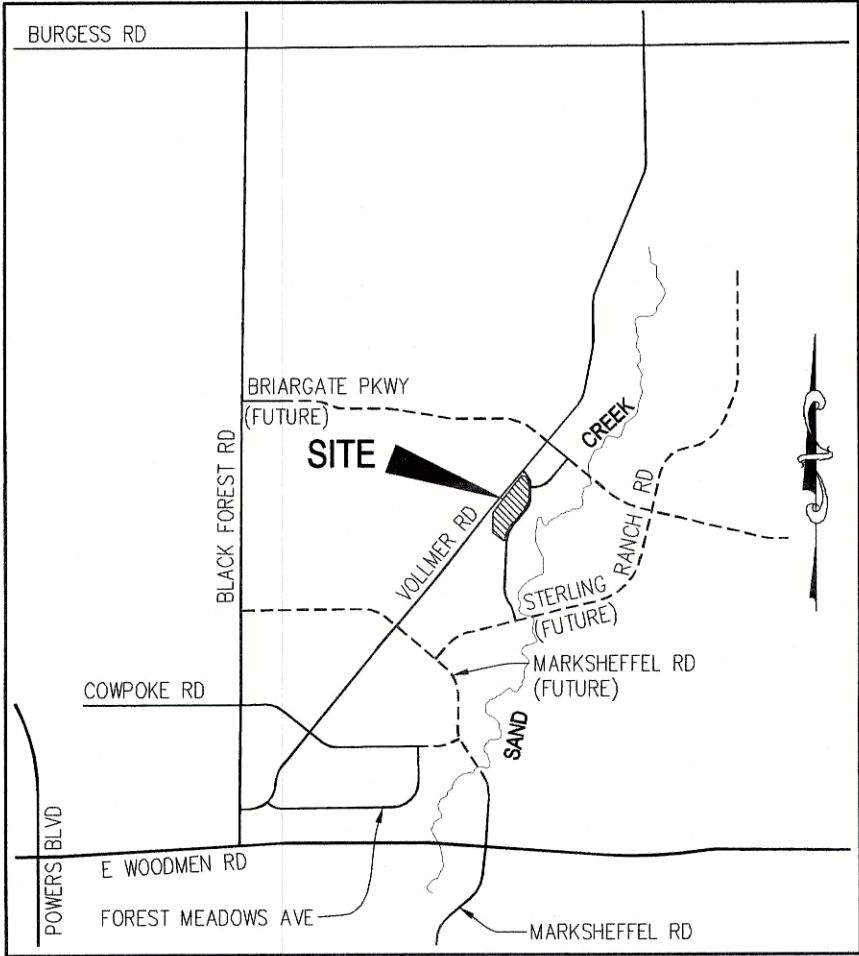
FILING NO. 1

COUNTY OF EL PASO, STATE OF COLORADO

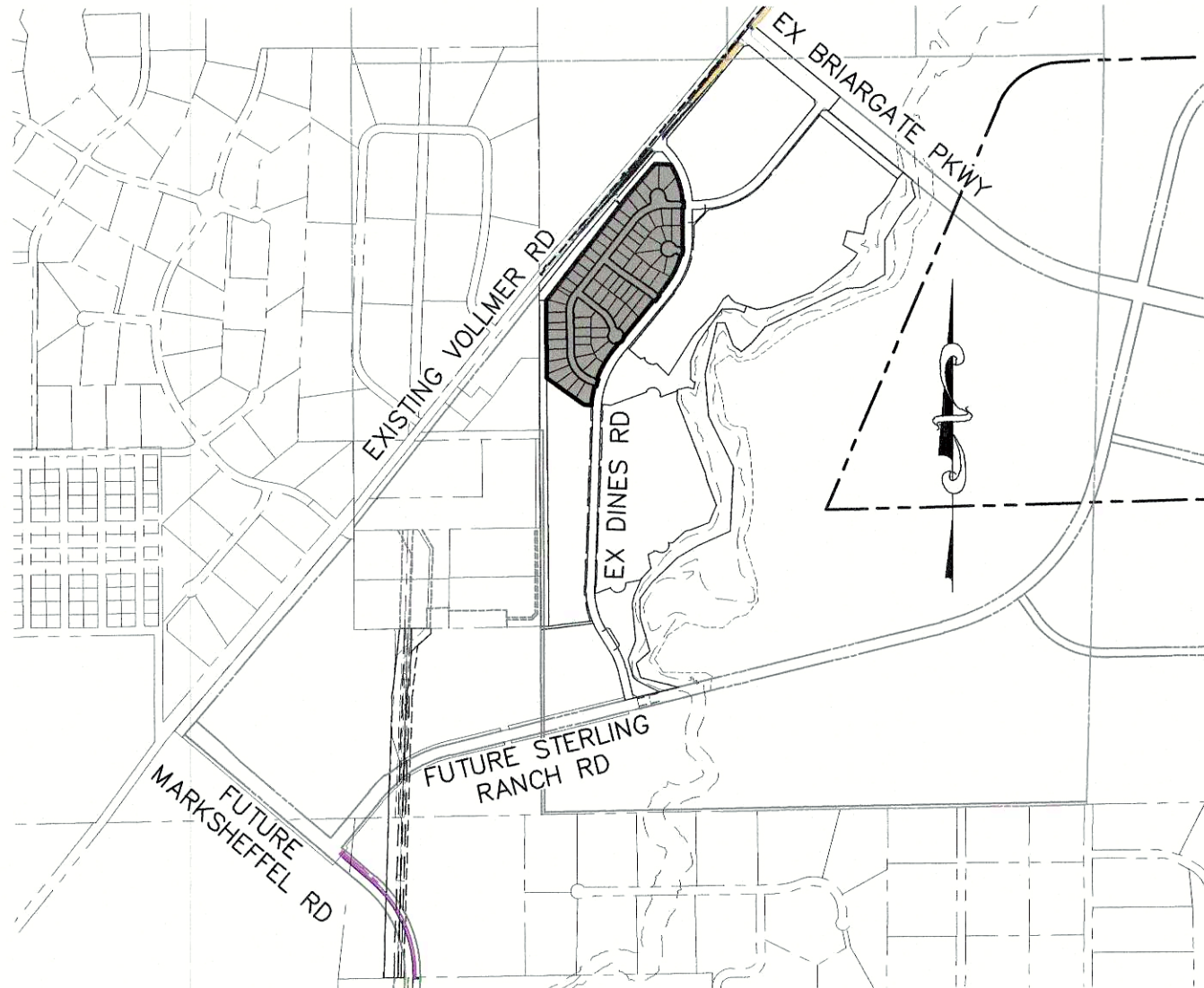
WATER SYSTEM PLAN

(INCLUDING UTILITY SERVICE PLAN)

OCTOBER 2018



VICINITY MAP
N.T.S.



SITE MAP
N.T.S.

BENCHMARKS

- THE TOP OF AN ALUMINUM SURVEYORS CAP, STAMPED "9853", AT THE SOUTHEAST BOUNDARY CORNER OF BARBARICK SUBDIVISION
NORTHING = 411416.273
EASTING = 235167.071
ELEVATION = 7023.42
- THE TOP OF A RED PLASTIC SURVEYORS CAP, ILLEGIBLE, AT THE NORTHWEST BOUNDARY CORNER OF PAWNEE RANCHEROS SUBDIVISION
NORTHING = 410095.404
EASTING = 235052.131
ELEVATION = 7000.40
- THE TOP OF A RED PLASTIC SURVEYORS CAP, STAMPED "38141", AT THE SOUTHWEST BOUNDARY CORNER OF BARBARICK SUBDIVISION
NORTHING = 411399.962
EASTING = 233849.817
ELEVATION = 7030.82

AGENCIES

OWNER/DEVELOPER:	SR LAND, LLC 20 BOULDER CRESCENT, SUITE 201 COLORADO SPRINGS, CO 80903 JIM MORLEY (719) 471-1742
CIVIL ENGINEER:	M & S CIVIL CONSULTANTS, INC. 20 BOULDER CRESCENT, SUITE 110 COLORADO SPRINGS, CO 80903 VIRGIL A. SANCHEZ P.E. (719) 955-5485
COUNTY ENGINEERING:	EL PASO COUNTY PLANNING AND COMMUNITY DEVELOPMENT 2880 INTERNATIONAL CIRCLE, SUITE 110 COLORADO SPRINGS, CO 80910 JEFF RICE, P.E. (719) 520-6300
TRAFFIC ENGINEERING:	EL PASO COUNTY DEPARTMENT OF PUBLIC WORKS 3275 AKERS DRIVE COLORADO SPRINGS, CO 80922 JENNIFER IRVINE, P.E. (719) 520-6460
WATER RESOURCES:	STERLING RANCH METRO DISTRICT ENGINEERS JDS-HYDRO CONSULTANTS 545 E. PIKES PEAK AVE., SUITE 300 COLORADO SPRINGS, CO 80903 JOHN MCGINN (719) 668-8769
FIRE DISTRICT:	BLACK FOREST FIRE PROTECTION DISTRICT 11445 TEACOUT ROAD COLORADO SPRINGS, CO 80908 CHIEF BRYAN JACK (719) 495-4300
GAS DEPARTMENT:	COLORADO SPRINGS UTILITIES 7710 DURANT DR. COLORADO SPRINGS, CO 80947 TIM WENDT (719) 668-3556
ELECTRIC DEPARTMENT:	MOUNTAIN VIEW ELECTRIC 11140 E. WOODMEN ROAD FALCON, CO 80831 (719) 495-2283
COMMUNICATIONS:	QWEST COMMUNICATIONS (U.N.C.C. LOCATORS) (800) 922-1987 AT&T (LOCATORS) (719) 635-3674

WATER & SEWER MAIN EXTENTIONS

ANY CHANGES OR ALTERATIONS AFFECTING THE GRADE, ALIGNMENT, ELEVATION AND/OR DEPTH OF COVER OF ANY WATER OR SEWER MAINS OR OTHER APPURTENANCE SHOWN ON THIS DRAWING SHALL BE THE RESPONSIBILITY OF THE OWNER/DEVELOPER. THE OWNER/DEVELOPER SHALL BE RESPONSIBLE FOR ALL OPERATIONAL DAMAGES AND DEFECTS IN INSTALLATION AND MATERIAL FOR MAINS AND SERVICES FROM THE DATE OF APPROVAL UNTIL FINAL ACCEPTANCE IS ISSUED.

SIGNED James F. Morley DATE 10/24/18
OWNER/DEVELOPER
PRINT NAME JAMES F. MORLEY
ADDRESS 20 BOULDER CRESCENT, SUITE 200
COLORADO SPRINGS, CO 80903

DISTRICT APPROVALS

THE STERLING RANCH METROPOLITAN DISTRICT RECOGNIZES THE DESIGN ENGINEER AS HAVING RESPONSIBILITY FOR THE DESIGN AND HAS LIMITED ITS SCOPE OF REVIEW ACCORDINGLY.

STERLING RANCH METROPOLITAN DISTRICT
WATER DESIGN APPROVAL

DATE: 11/15/18 BY: J. Ag

IN CASE OF ERRORS OR OMISSIONS WITH THE WATER DESIGN AS SHOWN ON THIS DOCUMENT THE STANDARDS AS DEFINED IN THE "RULES AND REGULATIONS FOR INSTALLATION OF WATER MAINS AND SERVICES" SHALL RULE.

APPROVAL EXPIRES 180 DAYS FROM DESIGN APPROVAL.

FIRE AUTHORITY APPROVAL

THE NUMBER OF FIRE HYDRANTS AND HYDRANT LOCATIONS SHOWN ON THIS WATER INSTALLATION PLAN ARE CORRECT AND ADEQUATE TO SATISFY THE FIRE PROTECTION REQUIREMENTS AS SPECIFIED BY THE BLACK FOREST FIRE PROTECTION DISTRICT SERVING THE PROPERTY NOTED ON THE PLANS.

BY B. Ag FIRE CHIEF DATE 11/15/18
B.F.F.D.

SHEET INDEX

SHEET 1	TITLE SHEET
SHEET 2	WATER DISTRICT MAIN PLAN
SHEET 3	WATER DISTRICT MAIN PLAN & PROFILE
SHEET 4	UTILITY SERVICE PLAN



HOMESTEAD AT STERLING RANCH FILING NO. 1

WATER PLANS

PROJECT NO. 09-005

SCALE: 11/10/2017

DESIGNED BY: VAS

DRAWN BY: EY

CHECKED BY: GW

DATE: 11/10/2017

SHEET 1 OF 4

WT01

20 BOULDER CRESCENT, SUITE 110
COLORADO SPRINGS, CO 80903
PHONE: 719.955.5485

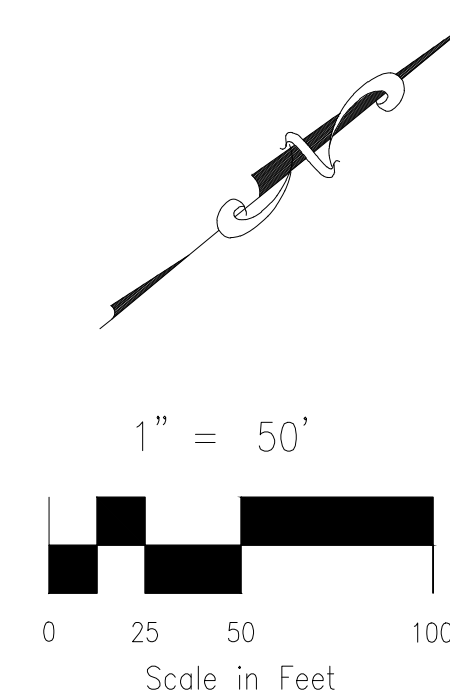
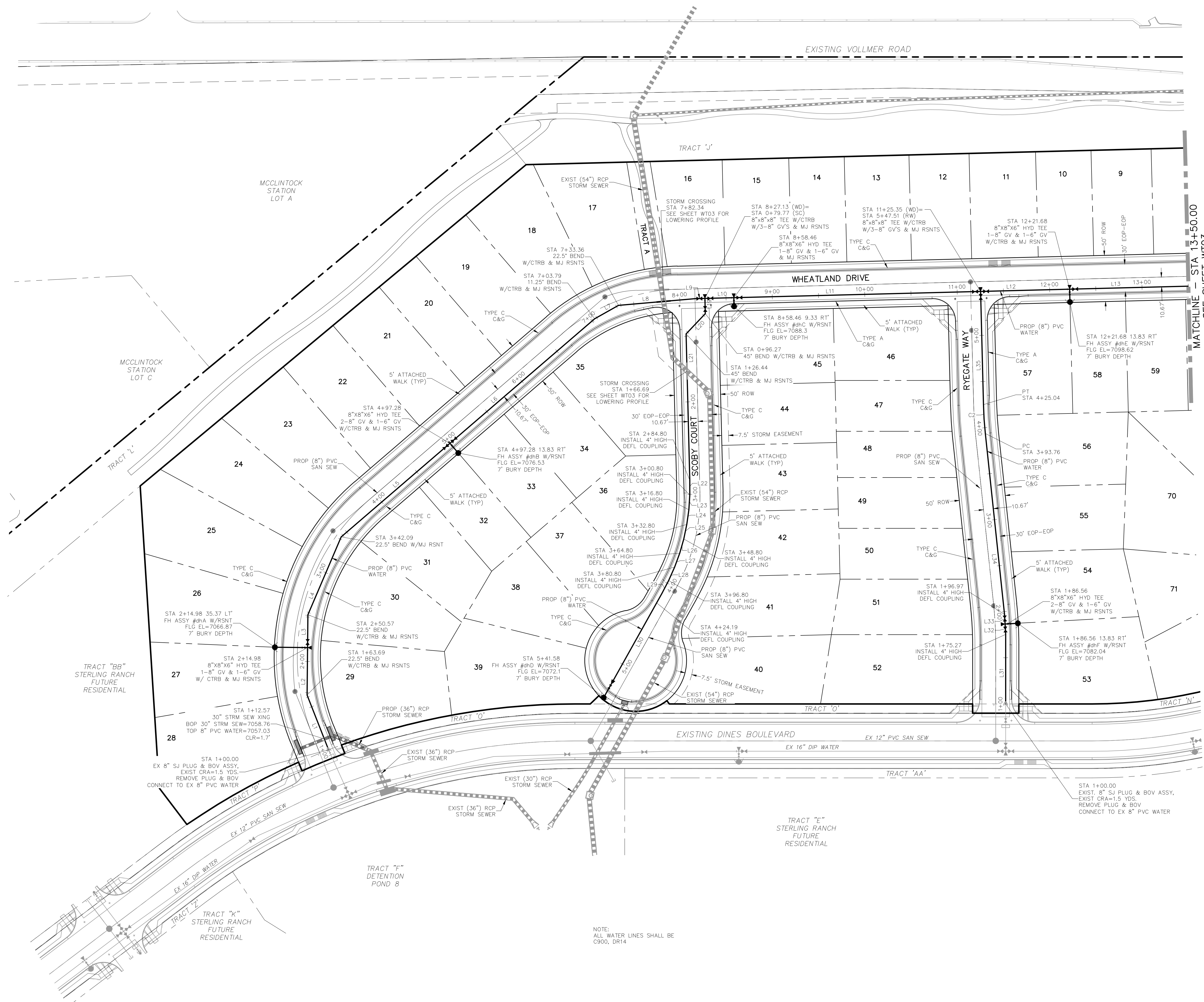
CIVIL CONSULTANTS, INC.

FOR AND ON BEHALF OF M&S CIVIL CONSULTANTS, INC.

NO.	DATE	BY	DESCRIPTION	APPROVED	DATE

THE ENGINEER PREPARING THESE PLANS WILL NOT BE RESPONSIBLE FOR UNAUTHORIZED CHANGES TO OR DEVIATIONS FROM THESE PLANS. ALL CHANGES TO THE PLANS MUST BE IN WRITING AND MUST BE APPROVED BY THE PREPARER OF THESE PLANS.

CAUTION



WATER LINE—LINE TABLE		
LINE	LENGTH	DIRECTION
L1	63.69'	N71° 55' 40"W
L2	51.29'	N49° 49' 01"W
L3	35.59'	N49° 49' 01"W
L4	91.52'	N27° 19' 01"W
L5	155.18'	N1° 09' 24"W
L6	206.52'	N1° 09' 24"W
L7	29.56'	N10° 05' 36"E
L8	83.10'	N34° 35' 36"E
L9	10.67'	N38° 06' 42"E
L10	31.33'	N38° 06' 42"E
L11	266.89'	N38° 06' 42"E
L12	96.33'	N38° 06' 42"E
L13	224.87'	N38° 06' 42"E
L19	16.50'	S51° 53' 18"E
L20	30.18'	S6° 53' 18"E
L21	158.36'	S51° 53' 18"E
L22	16.00'	S50° 34' 37"E
L23	16.00'	S46° 34' 37"E
L24	16.00'	S42° 34' 37"E
L25	16.00'	S38° 34' 37"E
L26	16.00'	S34° 34' 37"E
L27	16.00'	S30° 34' 37"E
L28	16.00'	S26° 34' 37"E
L29	16.00'	S22° 34' 37"E
L30	128.78'	S21° 15' 56"E
L31	75.27'	N50° 26' 12"W
L32	11.29'	N53° 35' 15"W
L33	10.41'	N53° 35' 15"W
L34	196.79'	N56° 29' 31"W
L35	122.47'	N51° 53' 18"W

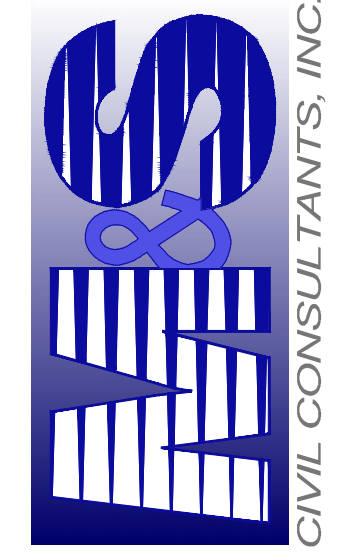
WATER LINE—CURVE TABLE			
CURVE	DELTA	RADIUS	LENGTH
C2	4°36'13"	389.33'	31.28'

 FOR LOCATING
& MARKING
GAS,
ELECTRIC,
WATER &
TELEPHONE
LINES

FOR BURIED UTILITY INFORMATION
8 HRS BEFORE YOU DIG
CALL 1-800-922-1987

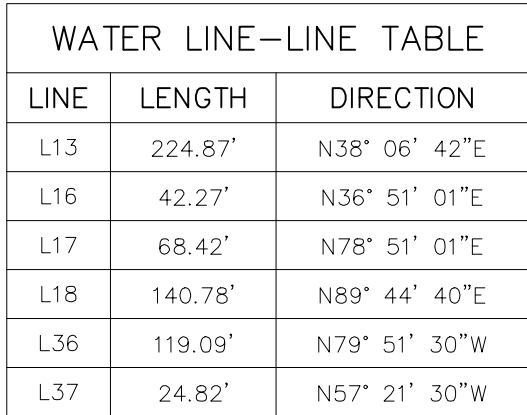
[illegible]

20 BOULDER CRESCENT, SUITE 110
COLORADO SPRINGS, CO 80903
PHONE: 719.955.5485



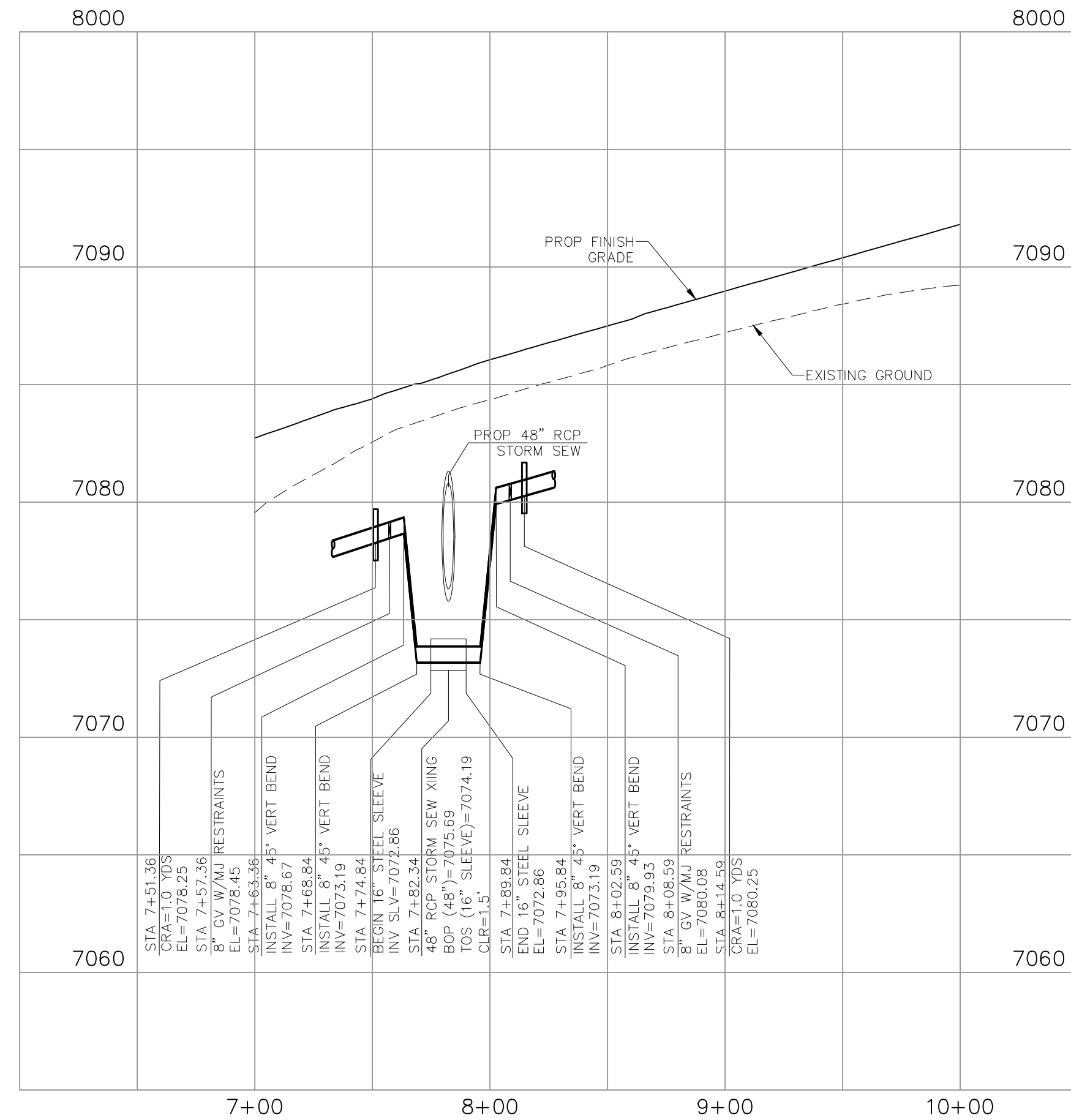
WIRGIL A. SANCHEZ, COLORADO P.E. NO. 37160

[illegible]



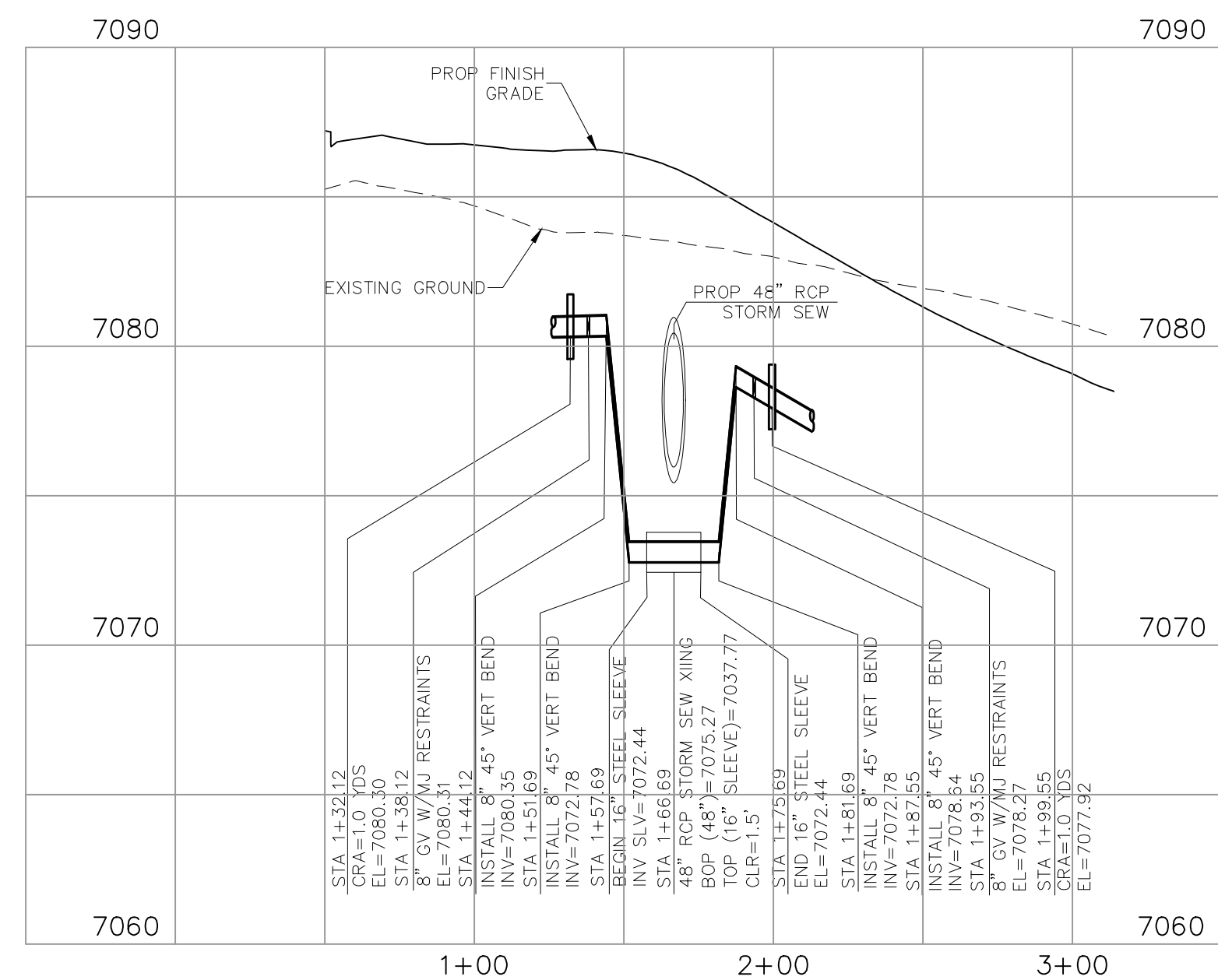
WATER LINE—CURVE TABLE			
CURVE	DELTA	RADIUS	LENGTH
C1	22°03'35"	289.33'	111.40'

NOTE:
ALL WATER LINES SHALL BE
C900, DR14



WATER LOWERING #1

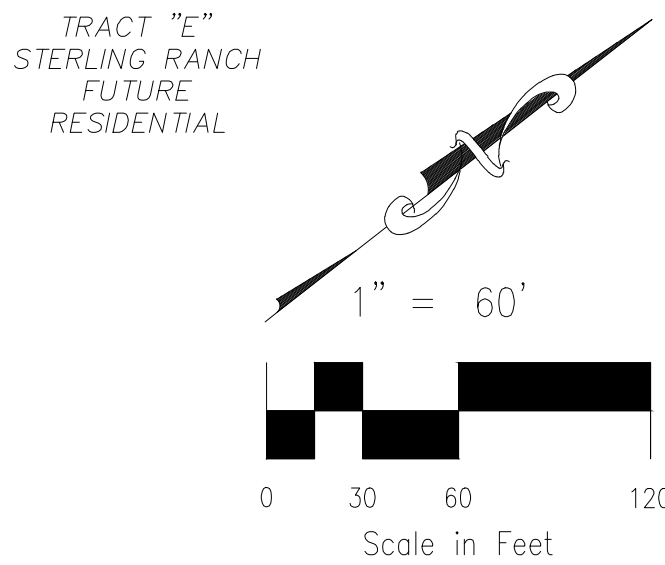
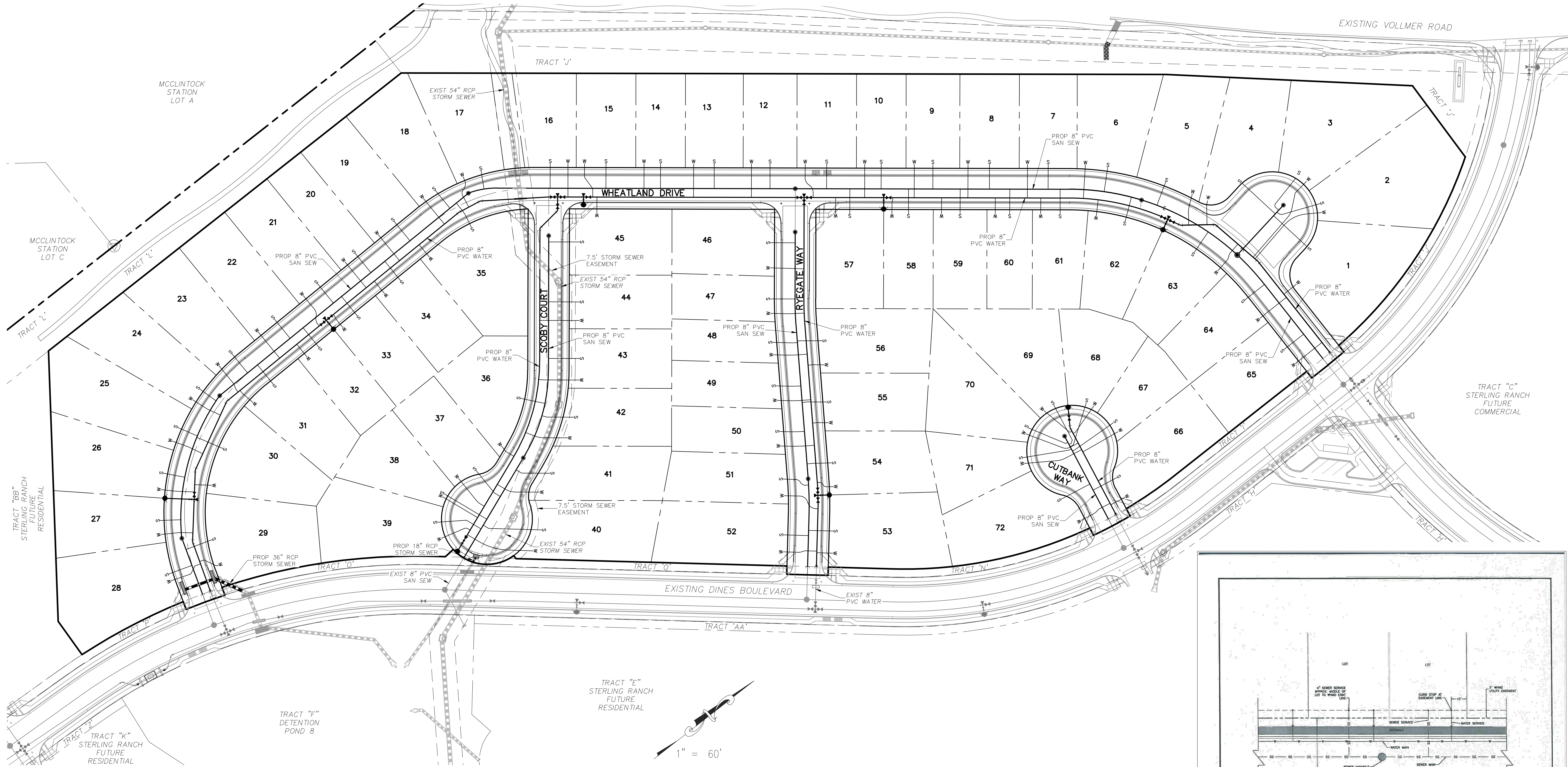
48" STORM SEWER



WATER LOWERING #2

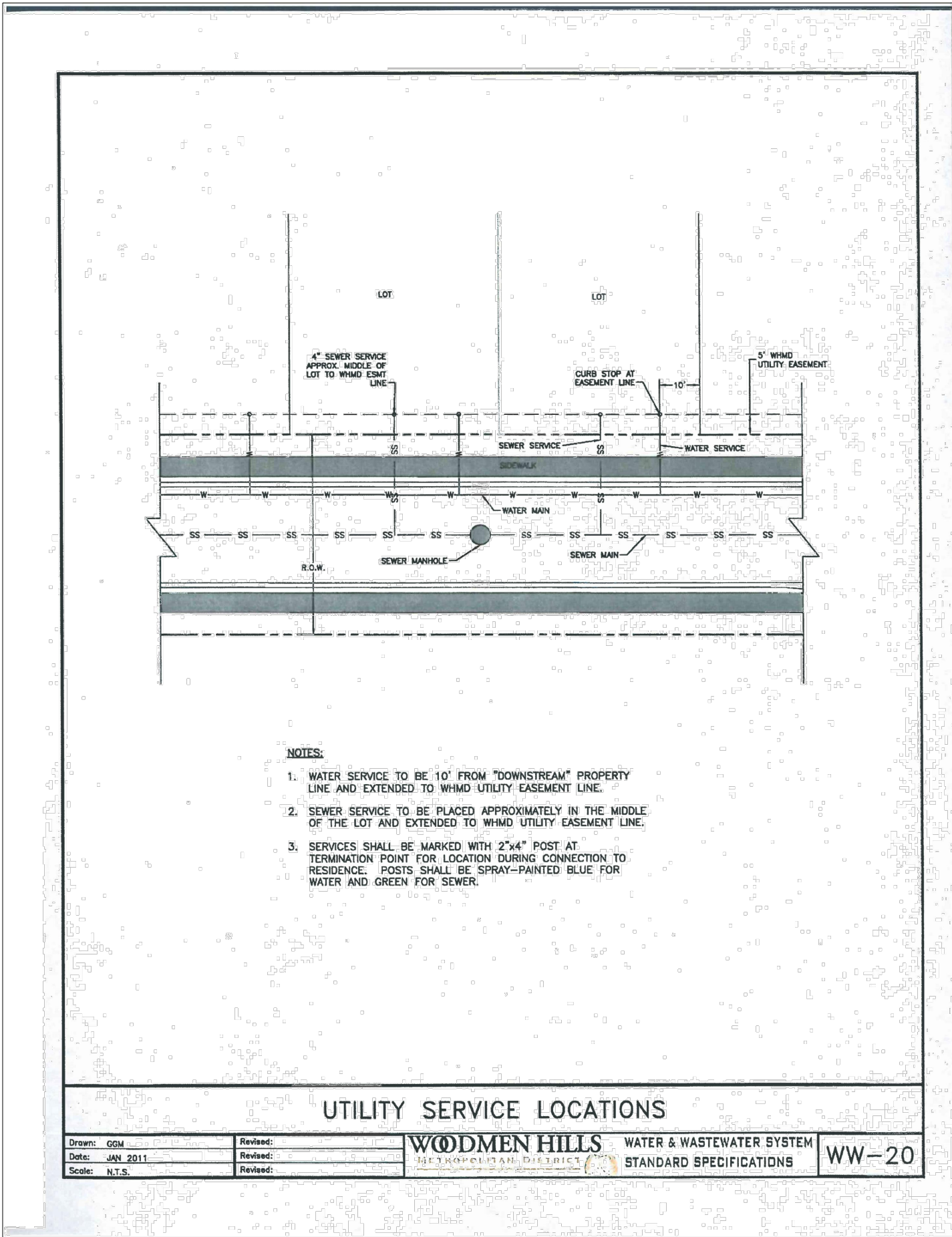
48" RCP STORM SEW





GENERAL NOTES:

1. THE CONTRACTOR IS RESPONSIBLE FOR ANY DAMAGE TO ANY UTILITY FACILITIES AS A RESULT OF HIS ACTIONS. THE CONTRACTOR SHALL MAKE ALL THE REQUIRED REPAIRS IMMEDIATELY TO THE SATISFACTION OF THE STERLING RANCH WATER DISTRICT.
2. ALL UTILITY SERVICES WHICH CROSS THE 54" STORM SEWER MAIN (LOTS 40, 41, 42, 43, AND 44) MUST BE SLEEVED.



FOR LOCATING
& MARKING
GAS,
ELECTRIC,
WATER &
TELEPHONE
LINES

FOR BURIED UTILITY INFORMATION
48 HRS BEFORE YOU DIG
CALL 1-800-922-1987

HOMESTEAD AT STERLING RANCH FILING NO. 1

UTILITY SERVICE PLANS

PROJECT NO. 09-005
DESIGNED BY: VAS
DRAWN BY: EY
CHECKED BY: GW

SCALE:
HORIZONTAL:
1"=60'
VERTICAL:
N/A

DATE: 11/14/2018
SHEET 4 OF 4
UT01

20 BOULDER CRESCENT SUITE 110
COLORADO SPRINGS, CO 80903
PHONE: 719.555.5485

CIVIL CONSULTANTS, INC.

FOR AND ON
BEHALF OF
W&S CIVIL
CONSULTANTS,
INC.

REVISIONS:

NO.	DATE:	BY:	DESCRIPTION:

APPROVED BY: DATE: VIRGIL A. SANCHEZ, COLORADO P.E. NO. 37160

THE ENGINEER PREPARING THESE PLANS WILL NOT BE RESPONSIBLE, OR LIABLE FOR, UNAUTHORIZED CHANGES TO OR USES OF THESE PLANS. ALL CHANGES TO THE PLANS MUST BE IN WRITING AND MUST BE APPROVED BY THE PREPARER OF THESE PLANS.

CAUTION