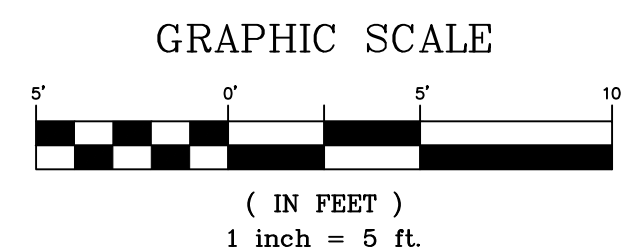
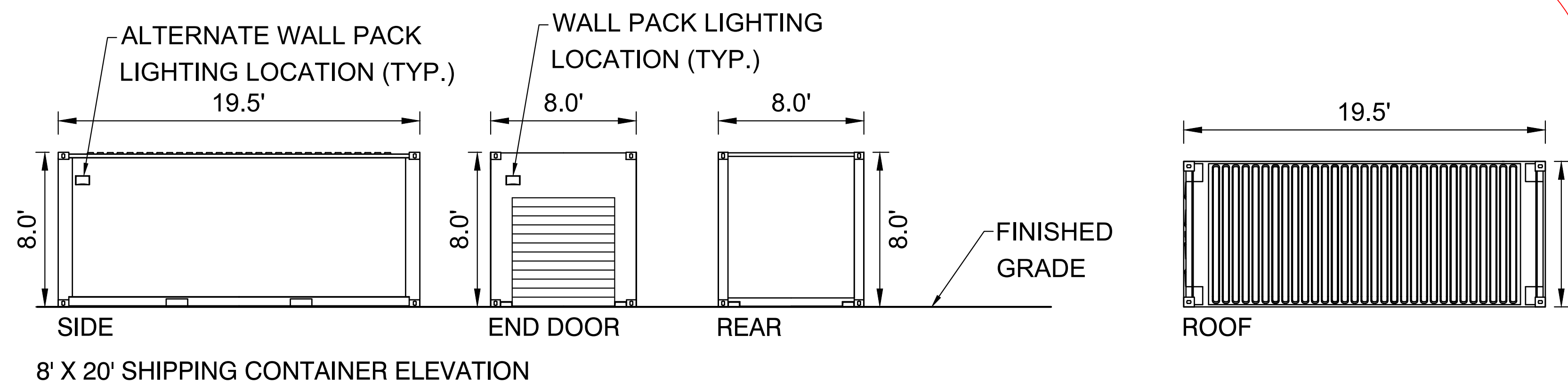


FILE LOCATION: S:\24.1690.001 RHETORIC SDRP-500 CADD\504 PLAN SET\DEVELOPMENT PLANA100.DWG

**MATERIAL: CORRUGATED STEEL**  
**WALL PAINT COLOR:** Sand PMS 7527 C  
**ROLL UP DOOR PAINT COLORS:** Desert Sand PMS 2325 C, Bronze PMS 7533 C  
**TRIM PAINT COLOR:** Warm Sand PMS 7528 C



are there no smaller 8 x 10 units now?

**Matrix response: Correct. The 8x10 and 8x40 units are not available and have been removed from the plan. All units are now the Boxwell 8'x20' (160 sq. ft.) self-storage units.**



are the 8 x 40 units also removed?

**MEDINAH POWER LED Solar Wall Pack**

**LED Solar Wall Pack Light**

Project: \_\_\_\_\_ Location: \_\_\_\_\_  
 Date: \_\_\_\_\_ Part #: \_\_\_\_\_  
 Notes: \_\_\_\_\_

**Performance & Features**

**LED Source**

- Lumileds SMD2835 with Single CCT 5000K
- CRI >70
- 20%-100% dimmable driver
- Microwave Sensor with photocell tech
- Smart Motion activated

**Construction**

- Highly durable die-cast aluminum, long lasting dark black finish
- Wet Location Rated
- Clear Prismatic Lens
- 8 hours charging time
- Operates efficiently in temperatures from -4°F to 104°F
- >1000 battery cycles

**Certifications and Warranty**

- UL Listed
- Backed by a 3-year limited warranty

**SKU Guide**

Example: SPRW15-H-MS-SK-BZ

Family	Output	Controls	CCT	Finish
SPRW	15 + 12W 45 + 35W	MS = Motion sensor	50K = 5000K	BZ = Bronze BK = Black

1.844.870.5337 | www.medinahpower.com | support@medinahpower.com

---

**MEDINAH POWER LED Solar Wallpack**

**Specification**

Model No.	Power (W)	Lumens (lm)	CCT (K)	LPW	Battery Spec (Li-on)	Solar Panel
SPRW15-H-MS-SK-BZ	12W	1500LM	5000K	125	3.2V 8000 mAh	10.5W 15V 0.7A
SPRW45-H-MS-SK-BK	35W	4000LM	5000K	114	6.4V 8000 mAh	4W 5V 0.8A

Contact for custom configuration & specifications

**Dimensions**

	SPRW15-H-MS-SK-BZ	SPRW45-H-MS-SK-BZ
A	9.8 in	16.5 in
B	8.8 in	13.9 in
C	3.7 in	8.3 in

**Modes of Operation**

**5 modes of operation:**

- 4 Hr mode
- All-night mode
- Energy-Saving mode
- Motion-only mode
- Occupancy mode

**MODES OF OPERATION**  
 (Operate at maximum of 25ft from the feature)

- Power - ON/OFF
- Dimming - HIGH
- Dimming - LOW

**Packaging Dimensions**

SKU#	Master Carton	Qty
SPRW15-H-MS-SK-BZ	15.2 x 11.6 x 20.8 in	4
SPRW45-H-MS-SK-BZ	20.7 x 16.6 x 15.8 in	2

1.844.870.5337 | www.medinahpower.com | support@medinahpower.com

**SOLAR WALL PACK LIGHTING DETAIL (OR SIMILAR)**

- NOTES:**
- No light will exceed property line boundary.
  - Wall Pack lights will be mounted to shipping containers approximately every fourth container.
  - Wall Pack lights will be downward facing.
  - Wall Pack lights will be solar powered.

**CONSULTANTS:**

**PLANNER/ LANDSCAPE ARCHITECT:**  
  
 2435 RESEARCH PARKWAY, SUITE 300  
 COLORADO SPRINGS, CO 80920  
 PHONE: (719) 575-0100  
 FAX: (719) 575-0208

**CIVIL ENGINEER:**  
 ALL TERRAIN ENGINEERING  
 1004 W VAN BUREN ST.  
 COLORADO SPRINGS, CO 80907  
 PHONE: (203) 577-8656

**OWNER/DEVELOPER:**  
 Colorado Concrete Crushing LLC  
 20 S. Boulder, Suite 100  
 Colorado Springs, CO 80903  
 CLIENT PHONE: (719)964-0064

**APPROVAL:**

**VICINITY MAP:**

**PROJECT:**  
 RHETORIC SELF STORAGE  
 SITE DEVELOPMENT PLAN  
 - MINOR AMENDMENT  
 EL PASO COUNTY, COLORADO  
 JUNE 2026

**REVISION HISTORY:**

NO.	DATE	DESCRIPTION	BY
1	06/11/2026	MINOR AMENDMENT - FIRST SUBMITTAL	RAF

**DRAWING INFORMATION:**  
 PROJECT NO: 24.1690.001  
 DRAWN BY: JS  
 CHECKED BY: RF  
 APPROVED BY: RF

**SHEET TITLE:**  
**ELEVATION PLAN**  
**A100**  
**SHEET 7 OF 7**

PCD FILE: PPR2524