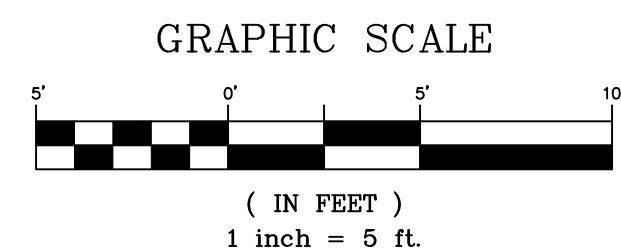
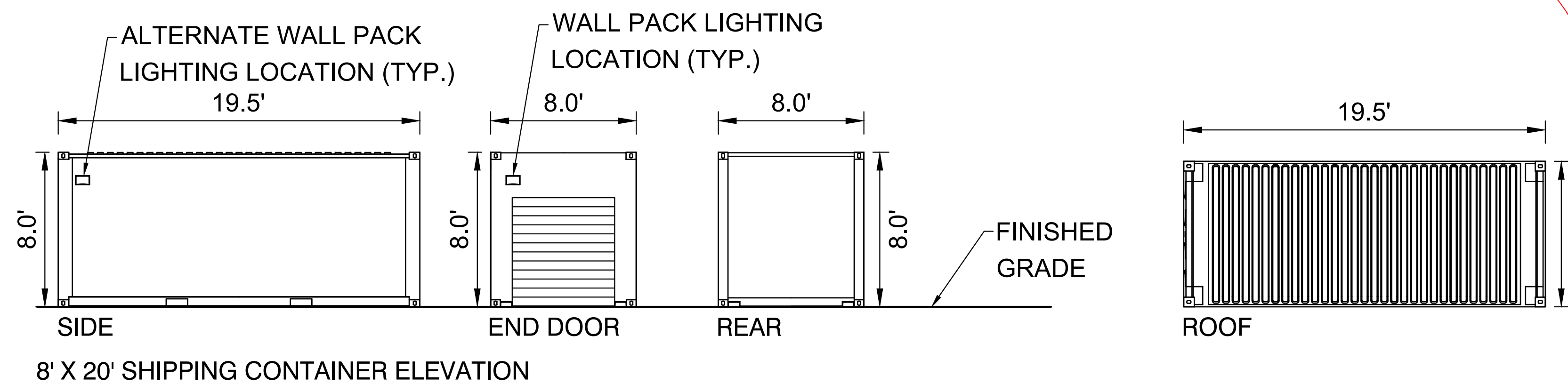


FILE LOCATION: S:\24.1690.001 RHETORIC SDR\500 CADD\504 PLAN SET\DEVELOPMENT PLANA100.DWG

MATERIAL: CORRUGATED STEEL
WALL PAINT COLOR: Sand PMS 7527 C

ROLL UP DOOR PAINT COLORS: Desert Sand PMS 2325 C, Bronze PMS 7533 C

TRIM PAINT COLOR: Warm Sand PMS 7528 C



MEDINAH POWER LED Solar Wall Pack

LED Solar Wall Pack Light

Project: _____ Location: _____
 Date: _____ Part #: _____
 Notes: _____

Performance & Features

LED Source

- Lumileds SMD2835 with Single CCT 5000K
- CRI >70
- 20%-100% dimmable driver
- Microwave Sensor with photocell tech
- Smart Motion activated

Construction

- Highly durable die-cast aluminum, long lasting dark black finish
- Wet Location Rated
- Clear Prismatic Lens
- 8 hours charging time
- Operates efficiently in temperatures from -4°F to 104°F
- >1000 battery cycles

Certifications and Warranty

- UL Listed
- Backed by a 3-year limited warranty

SKU Guide

Example: SPRW15-H-MS-SK-BZ

Family	Output	Controls	CCT	Finish
SPRW	15 = 12W 45 = 35W	MS = Motion sensor	50K = 5000K	BZ = Bronze BK = Black

1.844.870.5337 | www.medinahpower.com | support@medinahpower.com

MEDINAH POWER LED Solar Wallpack

Specification

Model No.	Power (W)	Lumens (lm)	CCT (K)	LPW	Battery Spec (Li-ion)	Solar Panel
SPRW15-H-MS-SK-BZ	12W	1500LM	5000K	125	3.2V 8000 mAh	10.5W 15V 0.7A
SPRW45-H-MS-SK-BK	35W	4000LM	5000K	114	6.4V 8000 mAh	4W 5V 0.8A

Contact for custom configuration & specifications

Dimensions

	SPRW15-H-MS-SK-BZ	SPRW45-H-MS-SK-BZ
A	9.8 in	16.5 in
B	8.8 in	13.9 in
C	5.7 in	8.3 in

Modes of Operation

5 modes of operation:

- 4 Hr mode
- All-night mode
- Energy-Saving mode
- Motion-only mode
- Occupancy mode

Packaging Dimensions

SKU#	Master Carton	Qty
SPRW15-H-MS-SK-BZ	15.2 x 11.6 x 20.8 in	4
SPRW45-H-MS-SK-BZ	20.7 x 16.6 x 15.8 in	2

1.844.870.5337 | www.medinahpower.com | support@medinahpower.com

SOLAR WALL PACK LIGHTING DETAIL (OR SIMILAR)

- NOTES:**
- No light will exceed property line boundary.
 - Wall Pack lights will be mounted to shipping containers approximately every fourth container.
 - Wall Pack lights will be downward facing.
 - Wall Pack lights will be solar powered.

CONSULTANTS:

PLANNER/ LANDSCAPE ARCHITECT:
Matrix
 2435 RESEARCH PARKWAY, SUITE 300
 COLORADO SPRINGS, CO 80920
 PHONE: (719) 575-0100
 FAX: (719) 575-9208

CIVIL ENGINEER:
 ALL TERRAIN ENGINEERING
 1004 W VAN BUREN ST.
 COLORADO SPRINGS, CO 80907
 PHONE: (203) 577-8656

OWNER/DEVELOPER:
Colorado Concrete Crushing LLC
 20 S. Boulder, Suite 100
 Colorado Springs, CO 80903
 CLIENT PHONE: (719)964-0064

APPROVAL:

VICINITY MAP:

PROJECT:
RHETORIC SELF STORAGE SITE DEVELOPMENT PLAN - MINOR AMENDMENT EL PASO COUNTY, COLORADO JUNE 2026

REVISION HISTORY:

NO.	DATE	DESCRIPTION	BY
1	06/11/2026	MINOR AMENDMENT - FIRST SUBMITTAL	RAF
	07/10/2026	MINOR AMENDMENT - SECOND SUBMITTAL	RAF

DRAWING INFORMATION:

PROJECT NO: 24.1690.001
 DRAWN BY: JS
 CHECKED BY: RF
 APPROVED BY: RF

SHEET TITLE:

ELEVATION PLAN

A100

SHEET 7 OF 7

PCD FILE: PPR2616