

Please add "PCD File No. CDR-21-016"

El Paso County Planning & Community Development
2880 International Circle
Colorado Springs, CO 80910

RE: Letter of Intent– MVEA Vollmer South

Please include the total area of land disturbance.

Dear Planning and Community Development,

Mountain View Electric Association, Inc (MVEA) will be constructing a 12.5 kV underground electrical distribution feeder line running along the east side of Vollmer Road. The underground installation will be approximately 1.75 miles in length and will begin near the intersection of Vollmer Road and Poco Road. The installation will run south parallel to Vollmer Road within a platted 20' utility easement until reaching Briargate Parkway. It continues southeast along the southeast side of Briargate Parkway in a platted 20' utility easement. The line then crosses and terminates along the southeast side of Wheatland Drive.

The utility line is located in sections 28 and 33, 12S, 65W of the 6th P.M., El Paso County, Colorado. Site maps are attached.

Please contact me for project all project related questions.

Regards,

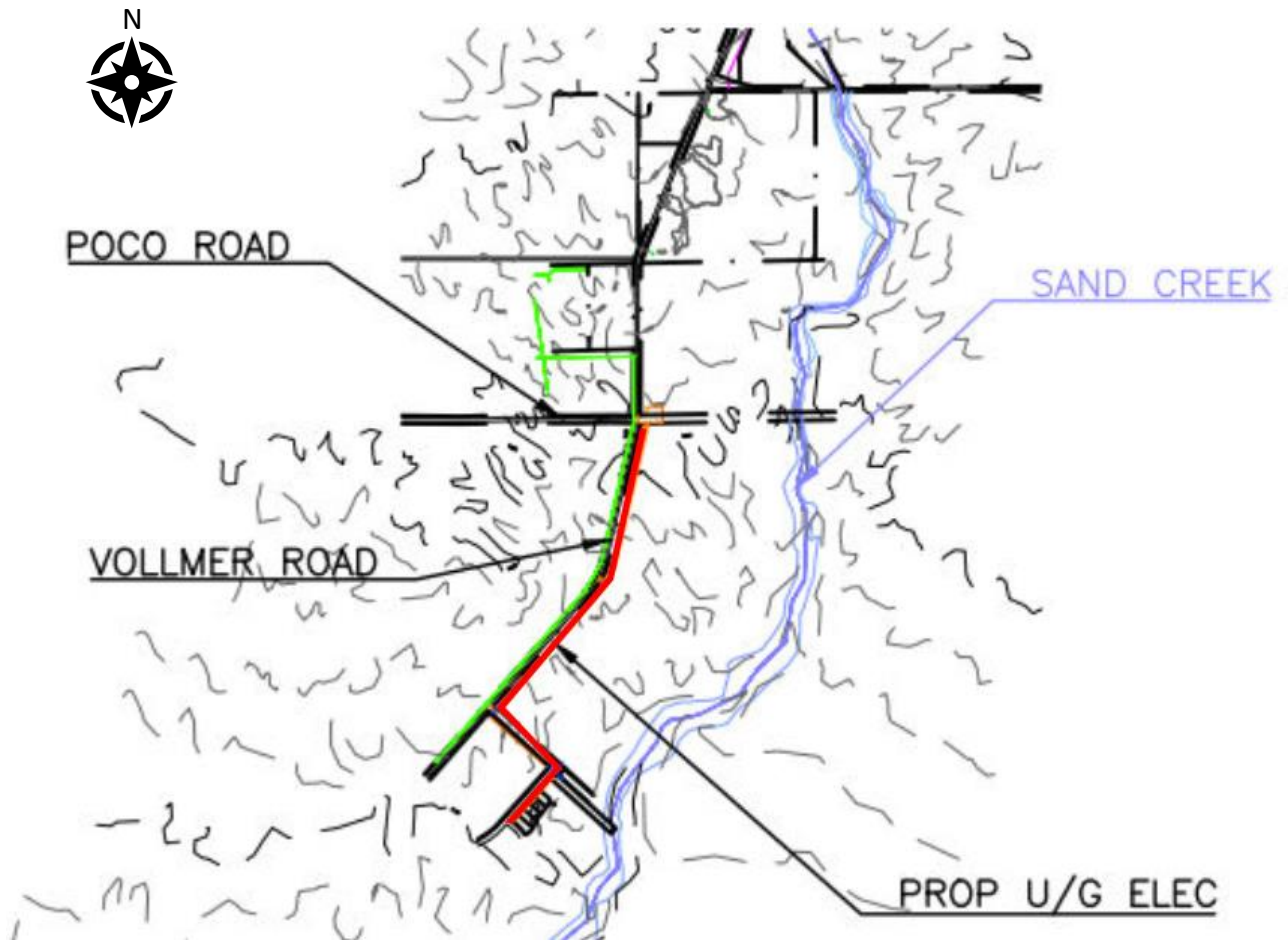
Amy Carlsen

Amy Carlsen
Mountain View Electric Association
Direct: 719-494-2699
Cell: 719-922-1116
Email: Amy.C@mvea.coop

Are these easements platted within the public ROW? The lot east of Vollmer Rd has not been platted yet.

Please provide a statement confirming the proposed activity and land use approval will not adversely impact adjacent properties or existing drainage patterns.

A work in the right-of-way permit is required for the installation of utilities on county row. Please confirm applicant will apply for a work in right-of-way permit.



VICINITY/SITE MAP OF NEW UNDERGROUND ELECTRICAL DISTRIBUTION LINES
**NOT DRAWN TO SCALE*