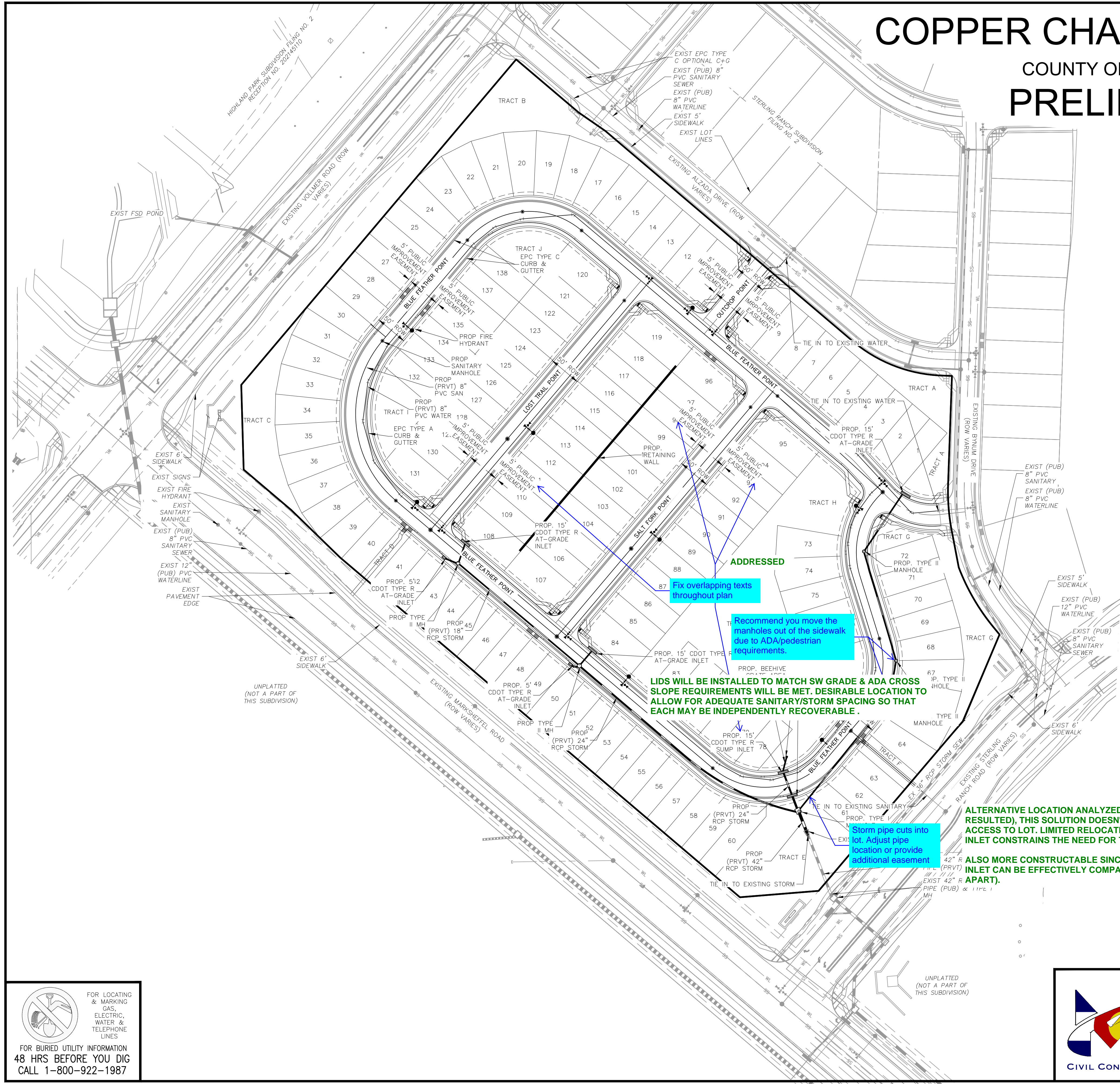


# COPPER CHASE AT STERLING RANCH

## COUNTY OF EL PASO, STATE OF COLORADO PRELIMINARY UTILITIES

DECEMBER 2021



### LEGEND

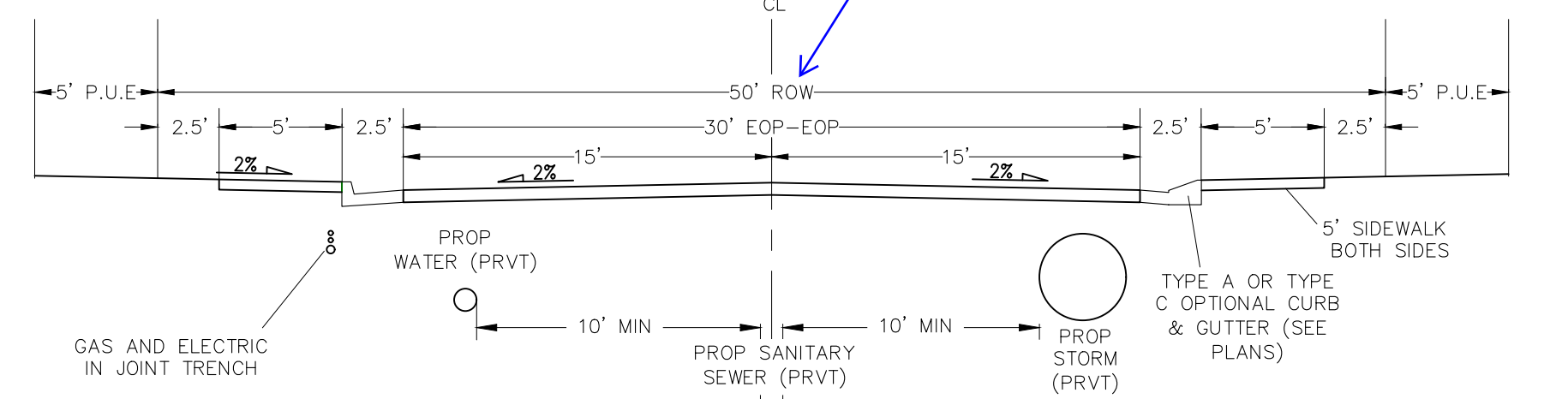
- PROP STORM SEWER PIPE
- PRIVATE UTILITY EASEMENT
- PROPOSED LOT LINE
- SITE BOUNDARY
- PROP MAJ CONT
- PROP MIN CONT
- EXIST MAJ CONT
- EXIST MIN CONT
- EXIST SANITARY
- EXIST WATER
- PROP 8" PVC SANITARY
- PROP 8" PVC WATER
- EXISTING STORM SEWER PIPE
- EXISTING FIRE HYDRANT
- EXISTING SANITARY MANHOLE
- EXISTING SIGN
- EX. WATER VALVE
- CROSSSPAN
- PROPOSED INLET
- EXISTING INLET
- EXISTING SANITARY MH
- EXISTING FIRE HYDRANT
- PROPOSED SANITARY MH
- FLARED END SECTION
- PROPOSED WATER BEND
- PROPOSED FIRE HYDRANT
- PROPOSED WATER VALVE

Contours not shown on this plan. Please remove from legend

REMOVED

REVISED

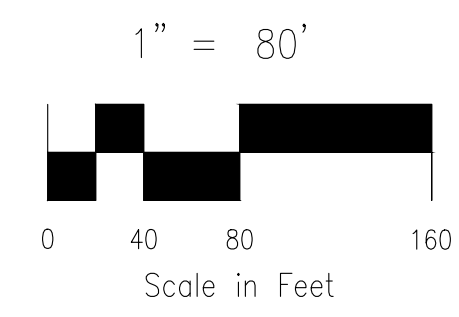
Drainage/utility/access easement



TYPICAL INTERNAL PUBLIC ROADS (PUB) 30' MAT

Access Roads (Private)

REVISED



FOR LOCATING & MARKING GAS, ELECTRIC, WATER & TELEPHONE LINES

FOR BURIED UTILITY INFORMATION 48 HRS BEFORE YOU DIG CALL 1-800-922-1987

212 N. WAHSATCH AVE., STE 305  
COLORADO SPRINGS, CO 80903  
PHONE: 719.955.5485

COPPER CHASE AT STERLING RANCH			
PRELIMINARY UTILITIES			
PROJECT NO. 09-014	SCALE: HORIZONTAL: 1"=80'	DATE: 12/13/21	
DESIGNED BY: CVW	DRAWN BY: CVW	SHEET 6 OF 9	PU01
CHECKED BY: VAS	VERTICAL: N/A		

File: C:\90144\Challenge\_PUD\Dev Plan\Preliminary Utilities\09-014\_PU01.dwg Plotstamp: 12/13/2021 11:37 AM