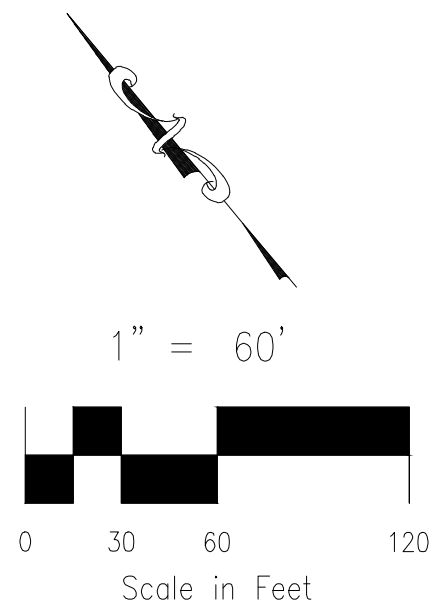


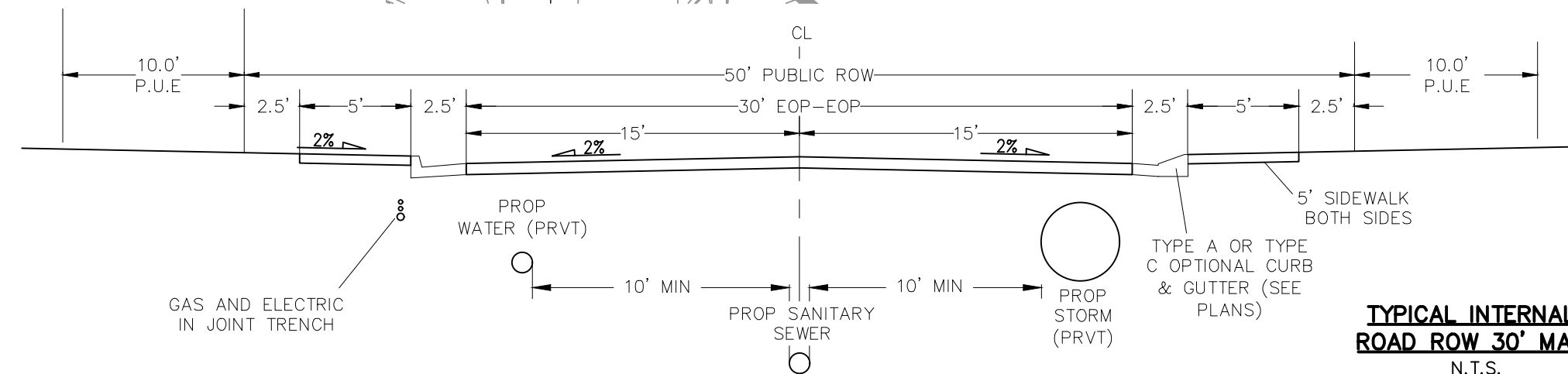
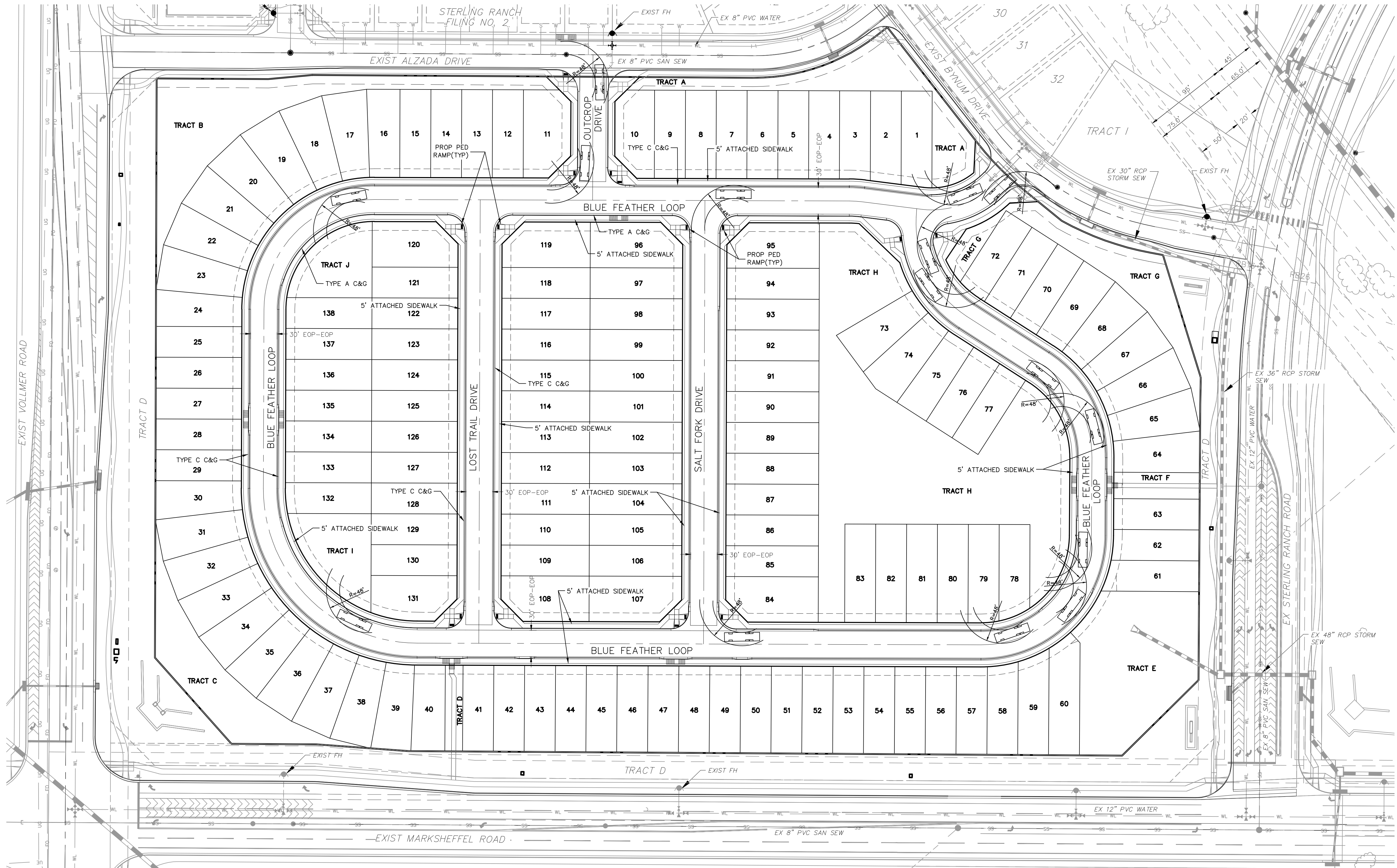
COPPER CHASE AT STERLING RANCH FIRE APPARATUS EXHIBIT

JULY 2023



LEGEND

- PUBLIC UTILITY EASEMENT
- PROPOSED LOT LINE
- SITE BOUNDARY
- EX. WATER VALVE
- CROSSSPAN
- PROPOSED INLET
- EXISTING INLET
- EXISTING SANITARY MH
- EXISTING FIRE HYDRANT
- EXISTING SIGN



FOR LOCATING & MARKING GAS, ELECTRIC, WATER & TELEPHONE LINES
FOR BURIED UTILITY INFORMATION
48 HRS BEFORE YOU DIG
CALL 1-800-922-1987

212 N. WAHSAATCH AVE., STE 305
COLORADO SPRINGS, CO 80903
PHONE: 719.955.5485

COPPER CHASE AT STERLING RANCH FIRE APPARATUS EXHIBIT		
PROJECT NO. 09-014	SCALE: HORIZONTAL: 1"=60' VERTICAL: N/A	DATE: 07/12/2023
DESIGNED BY: CW	DRAWN BY: CW	CHECKED BY: VAS
SHEET 1 OF 1		FE01

File: C:\90144\Challenger PUD\wg\Dev Plan\PU- FIRE- Exhibit.dwg Plotstamp: 7/12/2023 9:43 AM