

COPPER CHASE AT STERLING RANCH
COUNTY OF EL PASO, STATE OF COLORADO
UTILITIES PLAN - INCLUDING UTILITY SERVICE PLAN
DECEMBER 2021

GENERAL NOTES

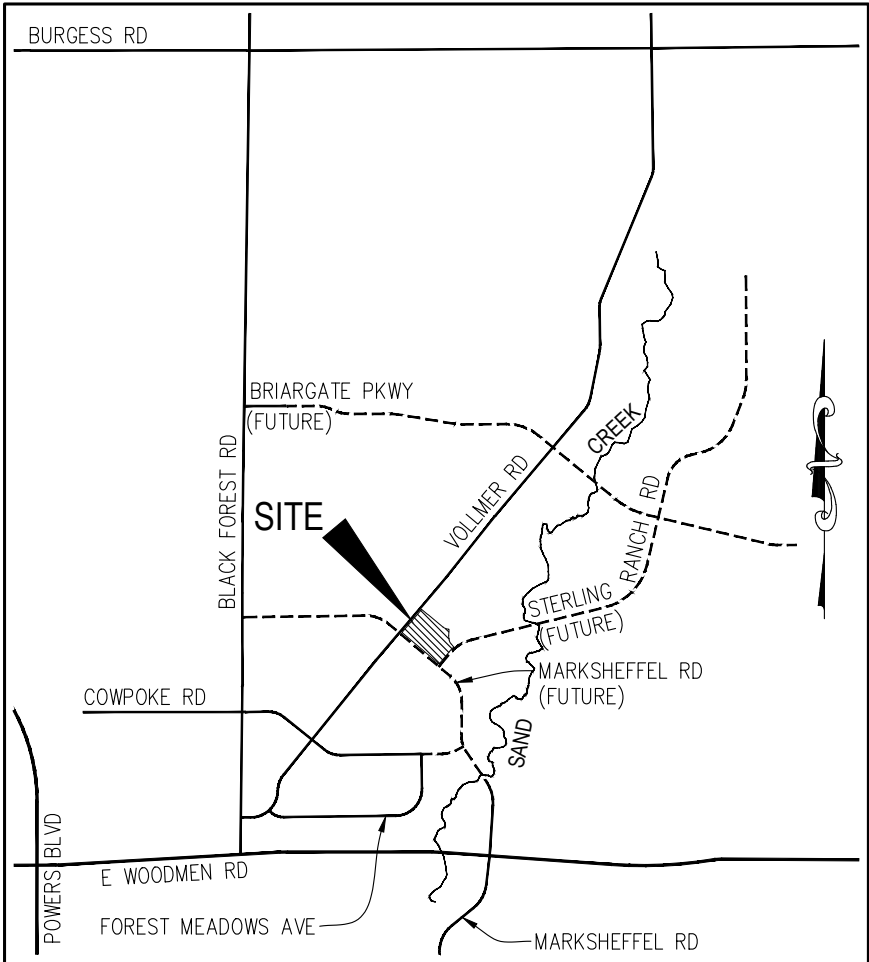
1. ALL UTILITY CONSTRUCTION TO BE CONDUCTED IN CONFORMANCE WITH THE CURRENT STERLING RANCH METROPOLITAN DISTRICT (SRMD, THE DISTRICT) SPECIFICATIONS.
2. ALL PLANS ON THE JOB SITE SHALL BE SIGNED BY THE DISTRICT AND THE DISTRICT'S ENGINEER. ANY REVISION TO THE PLANS SHALL BE SO NOTED WITH THE OLD DRAWING MARKED NOT VALID.
3. ALL STATIONING IS CENTERLINE UNLESS OTHERWISE NOTED. ALL ELEVATIONS ARE CENTERLINE UNLESS OTHERWISE NOTED.
4. ALL MATERIALS AND WORKMANSHIP SHALL BE SUBJECT TO INSPECTION BY THE DISTRICT. THE DISTRICT RESERVES THE RIGHT TO ACCEPT OR REJECT ANY SUCH MATERIALS AND WORKMANSHIP THAT DOES NOT CONFORM TO ITS STANDARDS AND SPECIFICATIONS.
5. ALL WATER AND SEWER SERVICE LOCATIONS SHALL BE CLEARLY MARKED ON EITHER THE CURB HEAD OR THE FACE OF THE CURB, WITH AN "S" FOR SEWER AND A "W" FOR WATER.
6. DUCTILE IRON PIPES, INCLUDING FITTINGS, VALVES AND FIRE HYDRANTS, SHALL BE WRAPPED WITH POLYETHYLENE TUBING, DOUBLE BONDED AT EACH JOINT AND ELECTRICALLY ISOLATED. BONDING AND ANODE CONNECTIONS SHALL BE THOROUGHLY COATED WITH BITUMINOUS COATINGS.
7. ALL DUCTILE IRON PIPE LESS THAN 12 INCHES AND FITTINGS SHALL HAVE CATHODIC PROTECTION USING TWO NO. 6 WIRES WITH 17 LB MAGNESIUM ANODES EVERY 400 FEET AND 9 LB MAGNESIUM ANODES AT EACH FITTING. ALL DUCTILE IRON PIPE 12 INCHES AND GREATER AND FITTINGS SHALL HAVE CATHODIC PROTECTION USING TWO NO. 6 WIRES WITH 17 LB MAGNESIUM ANODES EVERY 300 FEET AND 9 LB MAGNESIUM ANODES AT EACH FITTING.
8. ALL PIPE MATERIAL, BACKFILL AND INSTALLATION SHALL CONFORM TO THE APPLICABLE SPECIFICATIONS OF THE CITY OF COLORADO SPRINGS, COLORADO DEPARTMENT OF TRANSPORTATION, EL PASO COUNTY DEPARTMENT OF TRANSPORTATION, COLORADO SPRINGS UTILITIES AND THE GEOTECHNICAL ENGINEER.
9. COMPACTION TESTS SHALL BE 95% STANDARD PROCTOR AS DETERMINED BY ASTM D698, UNLESS OTHERWISE APPROVED BY THE DISTRICT OR HIGHER STANDARD AS IMPOSED BY ANOTHER AGENCIES HAVING RIGHT-OF-WAY JURISDICTION. THIS SHALL INCLUDE ALL VALVES, FIRE HYDRANT RUNS, WATER & SEWER SERVICE LINES AND MANHOLES. ALL REPORTS SHALL BE SUBMITTED TO THE DISTRICT FOR REVIEW AND APPROVAL.
10. THE LOCATION OF ALL EXISTING UTILITIES SHOWN ON THE DRAWINGS ARE APPROXIMATE ONLY. THE LOCATION OF ALL UTILITIES SHALL BE FIELD VERIFIED PRIOR TO COMMENCING CONSTRUCTION ACTIVITIES. THE DISTRICT SHALL BE NOTIFIED OF ANY DEVIATIONS TO THE LINE AND/OR GRADE AS DEPICTED ON THE PLANS. CONTRACTOR SHALL SUBMIT TO THE DISTRICT AND THE ENGINEER OF RECORD A REPORT OF THE FIELD VERIFIED INFORMATION PRIOR TO THE START OF CONSTRUCTION.
11. ALL BENDS SHALL BE FIELD STAKED PRIOR TO THE START OF CONSTRUCTION.
12. BENDS, DEFLECTION & CUT PIPE LENGTHS SHALL BE USED TO HOLD HORIZONTAL ALIGNMENT OF SEWER AND WATER LINES TO NO MORE THAN 0.5' FROM THE DESIGNED ALIGNMENT. CONSTRUCTION STAKES TO BE AT 25' INTERVALS ALONG CURVES TO ASSURE LOCATION OF PIPE LINE CONSTRUCTION.
13. AT ALL LOCATIONS WHERE CAP AND STUB IS NOTED ON DRAWINGS, PROVIDE A PLUG AT THE END OF THE PIPE JOINT NEAREST THE SPECIFIED STATION. PROVIDE A REVERSE ANCHOR AT ALL WATER LINE PLUGS.
14. ALL UNUSED SALVAGED WATER UTILITY MATERIAL SHALL BE RETURNED TO THE METROPOLITAN DISTRICT AS REQUESTED.
15. AT THE CONTRACTOR'S EXPENSE, ALL UTILITY MAINS SHALL BE SUPPORTED AND PROTECTED SUCH THAT THEY SHALL FUNCTION CONTINUOUSLY DURING CONSTRUCTION OPERATIONS. SHOULD A UTILITY MAIN FAIL AS A RESULT OF THE CONTRACTOR'S OPERATION, IT SHALL BE REPLACED IMMEDIATELY BY THE CONTRACTOR OR BY THE DISTRICT AT FULL COST OF LABOR AND MATERIALS TO THE CONTRACTOR/DEVELOPER.
16. PUMPING OR BYPASS OPERATIONS SHALL BE REVIEWED AND APPROVED BY BOTH THE DISTRICT AND THE DISTRICT ENGINEER PRIOR TO EXECUTION.
17. THE CONTRACTOR SHALL REPLACE OR REPAIR DAMAGE TO ALL SURFACE IMPROVEMENTS, INCLUDING BUT NOT LIMITED TO FENCES, LANDSCAPING, CURB AND GUTTER AND/OR ASPHALT THAT MAY BE CAUSED DURING CONSTRUCTION.
18. ALL CONTRACTORS WORKING ON OR NEAR A WATER OR SEWER FACILITY (TO INCLUDE SERVICE LINE) SHALL HAVE LIABILITY INSURANCE NAMING THE DISTRICT AS AN ADDITIONAL INSURED AND SHALL PROVIDE A CURRENT COPY OF WORKERS COMPENSATION INSURANCE ON FILE WITH THE DISTRICT. NO WORK CAN PROCEED WITHOUT CURRENT CERTIFICATES ON FILE AT THE DISTRICTS' OFFICE.
19. THE CONTRACTOR SHALL NOTIFY THE DISTRICT AND ALL AFFECTED UTILITY COMPANIES ADJACENT TO THE PROPOSED UTILITY CONSTRUCTION A MINIMUM OF 48 HOURS AND A MAXIMUM OF 96 HOURS PRIOR TO THE START OF CONSTRUCTION. A WEEKLY CONSTRUCTION MEETING SHALL BE REQUIRED WITH THE CONTRACTOR, DISTRICT ENGINEER AND ALL OTHER PARTIES AS DEEMED NECESSARY BY THE DISTRICT.
20. COMMENCEMENT OF CONSTRUCTION OF WATER/SEWER SYSTEMS WITHIN THE METROPOLITAN DISTRICT:
 - a. PRIOR TO THE START OF CONSTRUCTION, A PRE-CONSTRUCTION MEETING IS REQUIRED A MINIMUM OF 48 HOURS IN ADVANCE OF COMMENCEMENT OF WORK. A REPRESENTATIVE OF THE OWNER OR DEVELOPER, A REPRESENTATIVE OF THE CONTRACTOR AND DESIGN ENGINEER ARE REQUIRED TO ATTEND. CONTACT THE DISTRICT TO SCHEDULE THE PRE-CONSTRUCTION MEETING. NO PRE-CONSTRUCTION MEETING CAN BE SCHEDULED PRIOR TO FOUR (4) SIGNED/ APPROVED PLAN SETS ARE RECEIVED BY THE DISTRICT.
 - b. THE CONTRACTOR IS REQUIRED TO NOTIFY THE DISTRICT A MINIMUM OF 48 HOURS AND A MAXIMUM OF 2 WEEKS PRIOR TO THE START OF CONSTRUCTION. THE CONTRACTOR SHALL ALSO NOTIFY AFFECTED UTILITY COMPANIES AT LEAST 48 HOURS PRIOR TO THE START OF CONSTRUCTION ADJACENT TO THE KNOWN UTILITY LINES.
21. TESTING OF FACILITIES:
 - a. THE CONTRACTOR SHALL NOTIFY THE DISTRICT A MINIMUM OF 48 HOURS AND A MAXIMUM OF 96 HOURS PRIOR TO THE START OF ANY TESTING.
 - b. ALL SECTIONS OF WATER LINE ARE TO MEET THE FOLLOWING PRESSURE TESTING REQUIREMENTS:
 - TEST 100% OF ALL LINES
 - MUST PASS PRESSURE TEST TO 200 PSI FOR TWO HOURS (UNLESS OTHERWISE APPROVED ON THE PLANS).
 - c. ALL SANITARY SEWER FACILITIES ARE TO MEET THE FOLLOWING TESTING REQUIREMENTS
 - ALL LINES SHALL BE JET CLEANED PRIOR TO VACUUM OR PRESSURE TESTING
 - ALL MANHOLES SHALL BE VACUUM TESTED WITH DISTRICT STAFF PRESENT PRIOR TO CCTV INSPECTION.
 - SEWER MAINS TO BE PRESSURE TEST PRIOR TO CCTV INSPECTION
 - ALL LINES SHALL BE CCTV INSPECTED AND VIDEO SHALL BE SUBMITTED TO THE DISTRICT FOR REVIEW AND APPROVAL.

BENCHMARKS

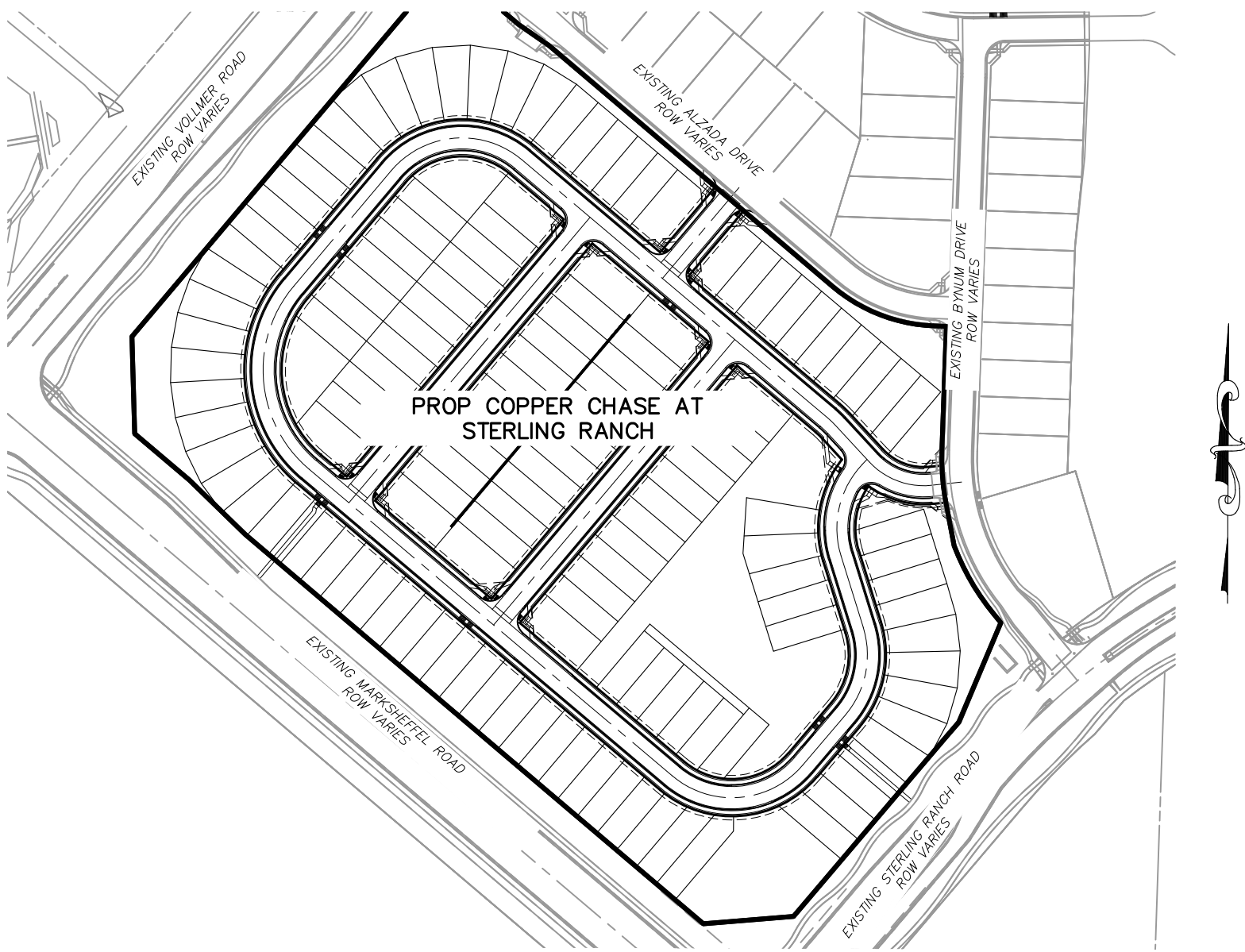
1. THE TOP OF AN ALUMINUM SURVEYORS CAP, STAMPED "9853", AT THE SOUTHEAST BOUNDARY CORNER OF BARBARICK SUBDIVISION
NORTHING = 411416.273
EASTING = 235167.071
ELEVATION = 7023.42
2. THE TOP OF A RED PLASTIC SURVEYORS CAP, ILLEGIBLE, AT THE NORTHWEST BOUNDARY CORNER OF PAWNEE RANCHEROS SUBDIVISION
NORTHING = 410095.404
EASTING = 235052.131
ELEVATION = 7000.40
3. THE TOP OF A RED PLASTIC SURVEYORS CAP, STAMPED "38141", AT THE SOUTHWEST BOUNDARY CORNER OF BARBARICK SUBDIVISION
NORTHING = 411399.962
EASTING = 233849.817
ELEVATION = 7030.82

SHEET INDEX

SHEET 1	TITLE SHEET	
SHEET 2	CONSTRUCTION NOTES	
SHEET 3	SANITARY SEWER PLAN & PROFILE - BLUE FEATHER POINT SANITARY 1	STA 1+00.00 TO 14+00.00
SHEET 4	SANITARY SEWER PLAN & PROFILE - BLUE FEATHER POINT SANITARY 1	STA 14+00.00 TO 17+61.40
SHEET 5	SANITARY SEWER PLAN & PROFILE - BLUE FEATHER POINT SANITARY 2	STA 1+00.00 TO 11+38.64
SHEET 6	SANITARY SEWER PLAN & PROFILE - LOST TRAIL POINT	STA 1+00.00 TO 5+63.23
	SANITARY SEWER PLAN & PROFILE - SALT FORK POINT	STA 1+00.00 TO 5+63.23
SHEET 7	WATER DISTRICT MAIN PLAN & PROFILE	
SHEET 8	UTILITY SERVICE PLAN	
SHEET 9	UTILITY DETAILS	



VICINITY MAP
N.T.S.



SITE MAP
N.T.S.

DISTRICT APPROVALS

THE STERLING RANCH METROPOLITAN DISTRICT RECOGNIZES THE DESIGN ENGINEER AS HAVING RESPONSIBILITY FOR THE DESIGN AND HAS LIMITED ITS SCOPE OF REVIEW ACCORDINGLY.

STERLING RANCH METROPOLITAN DISTRICT
WATER DESIGN APPROVAL

DATE: _____ BY: _____

PROJECT NO. _____

IN CASE OF ERRORS OR OMISSIONS WITH THE WATER DESIGN AS SHOWN ON THIS DOCUMENT THE STANDARDS AS DEFINED IN THE "RULES AND REGULATIONS FOR INSTALLATION OF WATER MAINS AND SERVICES" SHALL RULE.

APPROVAL EXPIRES 180 DAYS FROM DESIGN APPROVAL.

FIRE AUTHORITY APPROVAL

THE NUMBER OF FIRE HYDRANTS AND HYDRANT LOCATIONS SHOWN ON THIS WATER INSTALLATION PLAN ARE CORRECT AND ADEQUATE TO SATISFY THE FIRE PROTECTION REQUIREMENTS AS SPECIFIED BY THE FIRE DISTRICT SERVING THE PROPERTY NOTED ON THE PLANS.

BLACK FOREST FIRE RESCUE PROTECTION DISTRICT

SIGNED _____ DATE _____
BLACK FOREST FIRE RESCUE PROTECTION DISTRICT

AGENCIES

OWNER:	CHALLENGER HOMES 8605 EXPLORER DRIVE, SUITE 250 COLORADO SPRINGS, CO 80920 JIM BYERS (719) 602-5192
CIVIL ENGINEER:	M & S CIVIL CONSULTANTS, INC. 212 N WAHSATCH AVENUE, SUITE 305 COLORADO SPRINGS, CO 80903 VIRGIL A. SANCHEZ P.E. (719) 955-5485
COUNTY ENGINEERING:	EL PASO COUNTY PLANNING AND COMMUNITY DEVELOPMENT 2880 INTERNATIONAL CIRCLE, SUITE 110 COLORADO SPRINGS, CO 80910 GILBERT LAFORCE (719)-520-7945
TRAFFIC ENGINEERING:	EL PASO COUNTY PUBLIC SERVICES & TRANS. DEPT. 3275 AKERS DRIVE COLORADO SPRINGS, CO 80922 JENNIFER IRVINE, P.E. (719) 520-6460
WATER RESOURCES:	STERLING RANCH METRO DISTRICT ENGINEERS JDS-HYDRO CONSULTANTS 545 E. PIKES PEAK AVE., SUITE 300 COLORADO SPRINGS, CO 80903 JOHN MCINN (719) 668-8769
GAS DEPARTMENT:	COLORADO SPRINGS UTILITIES 7710 DURANT DR. COLORADO SPRINGS, CO 80947 TIM WENDT (719) 668-3556
ELECTRIC DEPARTMENT:	MOUNTAIN VIEW ELECTRIC 11140 E. WOODMEN ROAD FALCON, CO 80831 (719) 495-2283
COMMUNICATIONS:	QWEST COMMUNICATIONS (U.N.C.C. LOCATORS) (800) 922-1987 AT&T (LOCATORS) (719) 635-3674

DESIGN ENGINEER'S STATEMENT:

THIS GRADING AND EROSION CONTROL PLAN WAS PREPARED UNDER MY DIRECTION AND SUPERVISION AND IS CORRECT TO THE BEST OF MY KNOWLEDGE AND BELIEF. SAID PLAN HAS BEEN PREPARED ACCORDING TO THE CRITERIA ESTABLISHED BY THE COUNTY FOR GRADING AND EROSION CONTROL PLANS. I ACCEPT RESPONSIBILITY FOR ANY LIABILITY CAUSED BY NEGLIGENT ACTS, ERRORS OR OMISSIONS ON MY PART IN PREPARING THIS PLAN.

VIRGIL A. SANCHEZ, COLORADO P.E. NO. 37160
FOR AND ON BEHALF OF M&S CIVIL CONSULTANTS, INC. DATE

OWNER/DEVELOPER'S STATEMENT:

I, THE OWNER/DEVELOPER HAVE READ AND WILL COMPLY WITH THE REQUIREMENTS OF THE GRADING AND EROSION CONTROL PLAN.

JIM BYERS, CHALLENGER HOMES VP COMMUNITY DEVELOPMENT
8605 EXPLORER DRIVE, COLORADO SPRINGS, CO 80910 DATE

EL PASO COUNTY:

COUNTY PLAN REVIEW IS PROVIDED ONLY FOR GENERAL CONFORMANCE WITH COUNTY DESIGN CRITERIA. THE COUNTY IS NOT RESPONSIBLE FOR THE ACCURACY AND ADEQUACY OF THE DESIGN, DIMENSIONS, AND/OR ELEVATIONS WHICH SHALL BE CONFIRMED AT THE JOB SITE. THE COUNTY THROUGH THE APPROVAL OF THIS DOCUMENT ASSUMES NO RESPONSIBILITY FOR COMPLETENESS AND/OR ACCURACY OF THIS DOCUMENT.

FILED IN ACCORDANCE WITH THE REQUIREMENTS OF THE EL PASO COUNTY LAND DEVELOPMENT CODE, DRAINAGE CRITERIA MANUAL, VOLUMES 1 AND 2, AND ENGINEERING CRITERIA MANUAL AS AMENDED.

IN ACCORDANCE WITH ECM SECTION 1.12, THESE CONSTRUCTION DOCUMENTS WILL BE VALID FOR CONSTRUCTION FOR A PERIOD OF 2 YEARS FROM THE DATE SIGNED BY THE EL PASO COUNTY ENGINEER. IF CONSTRUCTION HAS NOT STARTED WITHIN THOSE 2 YEARS, THE PLANS WILL NEED TO BE RESUBMITTED FOR APPROVAL, INCLUDING PAYMENT OF REVIEW FEES AT THE PLANNING AND COMMUNITY DEVELOPMENT DIRECTORS DISCRETION.

JENNIFER IRVINE, P.E.
COUNTY ENGINEER / ECM ADMINISTRATOR DATE

WATER & SEWER MAIN EXTENTIONS

ANY CHANGES OR ALTERATIONS AFFECTING THE GRADE, ALIGNMENT, ELEVATION AND/OR DEPTH OF COVER OF ANY WATER OR SEWER MAINS OR OTHER APPURTENANCE SHOWN ON THIS DRAWING SHALL BE THE RESPONSIBILITY OF THE OWNER/DEVELOPER. THE OWNER/DEVELOPER SHALL BE RESPONSIBLE FOR ALL OPERATIONAL DAMAGES AND DEFECTS IN INSTALLATION AND MATERIAL FOR MAINS AND SERVICES FROM THE DATE OF APPROVAL UNTIL FINAL ACCEPTANCE IS ISSUED.

SIGNED _____ DATE _____
OWNER/DEVELOPER

PRINT NAME _____

DBA _____

ADDRESS _____

COPPER CHASE AT STERLING RANCH

UTILITY PLANS

DATE: 12/23/2021

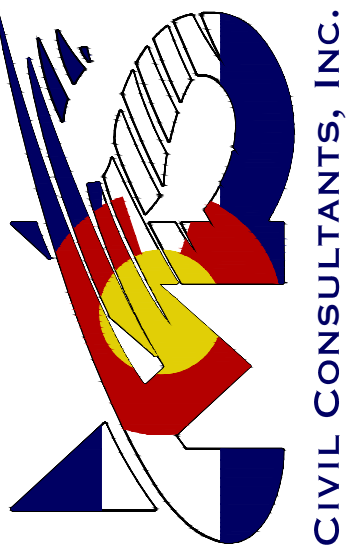
SCALE: HORIZONTAL: 1"=50' VERTICAL: 1"=5'

PROJECT NO. 09014
DESIGNED BY: CW
DRAWN BY: TAU
CHECKED BY: VAS

WT01

SHEET 1 OF 9

212 N WAHSATCH AVE, STE 305
COLORADO SPRINGS, CO 80903
PHONE: 719.955.5485



FOR AND ON
BEHALF OF
M&S CIVIL CONSULTANTS,
INC.

VIRGIL A. SANCHEZ, COLORADO P.E. NO. 37160

REVISIONS: NO. DATE BY: DESCRIPTION

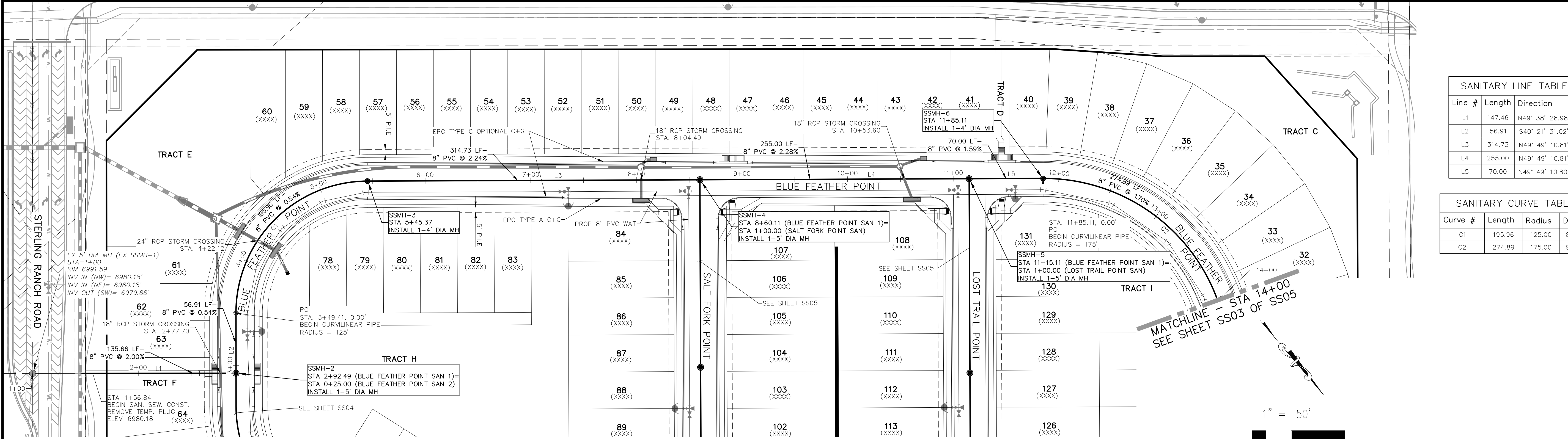
THE ENGINEER PREPARING THESE PLANS WILL NOT BE RESPONSIBLE, OR LIABLE FOR, UNAUTHORIZED CHANGES TO OR USES OF THESE PLANS. ALL CHANGES TO THE PLANS MUST BE IN WRITING AND MUST BE APPROVED BY THE PREPAREY OF THESE PLANS.

CAUTION



FOR LOCATING
& MARKING
GAS,
ELECTRIC,
WATER &
TELEPHONE
LINES

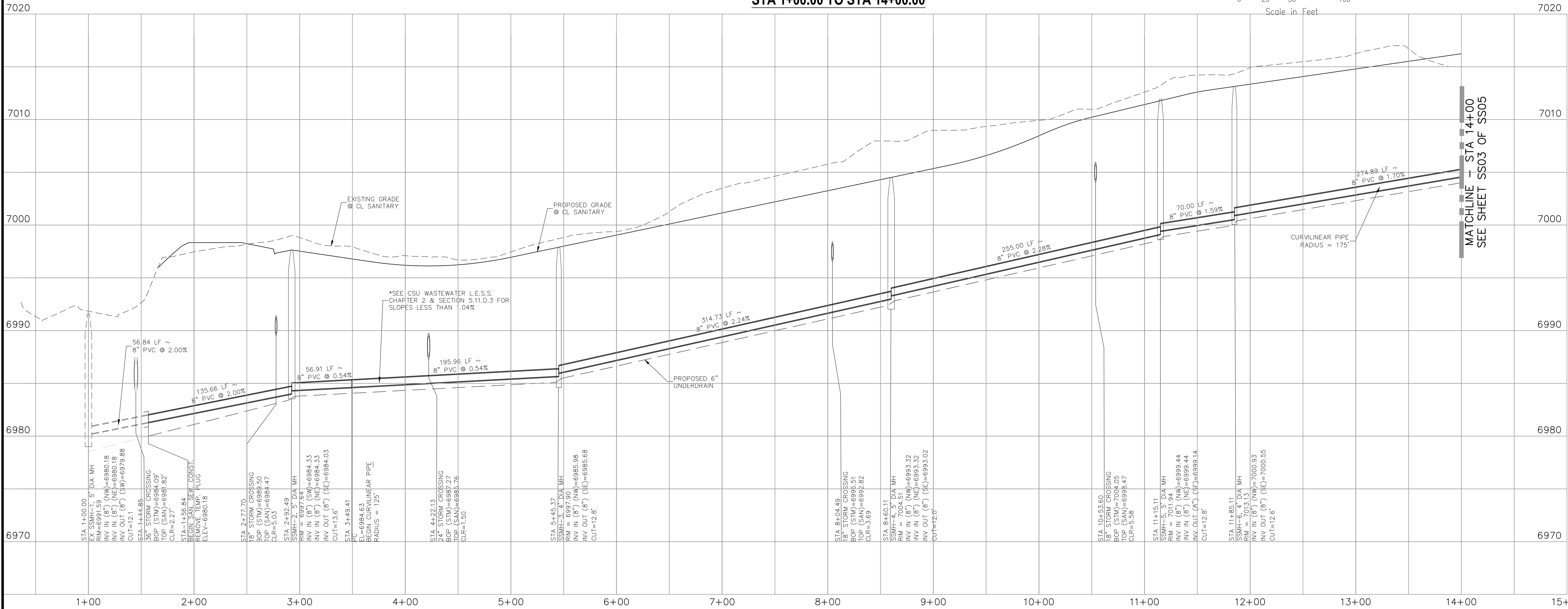
FOR BURIED UTILITY INFORMATION
48 HRS BEFORE YOU DIG
CALL 1-800-922-1987



SANITARY LINE TABLE		
Line #	Length	Direction
L1	147.46	N49° 38' 28.98"W
L2	56.91	S40° 21' 31.02"W
L3	314.73	N49° 49' 10.81"W
L4	255.00	N49° 49' 10.81"W
L5	70.00	N49° 49' 10.80"W

SANITARY CURVE TABLE			
Curve #	Length	Radius	Delta
C1	195.96	125.00	89.82
C2	274.89	175.00	90.00

BLUE FEATHER POINT SANITARY 1
STA 1+00.00 TO STA 14+00.00



BLUE FEATHER POINT SANITARY 1 STA 1+00.00 TO STA 14+00.00

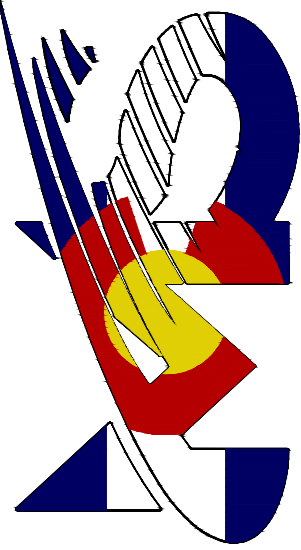
COPPER CHASE AT STERLING RANCH

SANITARY SEWER PLANS

PROJECT NO. 09-014
DATE: 12/23/2021
SCALE: HORIZONTAL: 1"=50'
VERTICAL: 1"=5'

SHEET 2 OF 9
SS02

212 N WAHATCH AVE, STE 305
COLORADO SPRINGS, CO 80903
PHONE: 719.555.5465



CIVIL CONSULTANTS, INC.

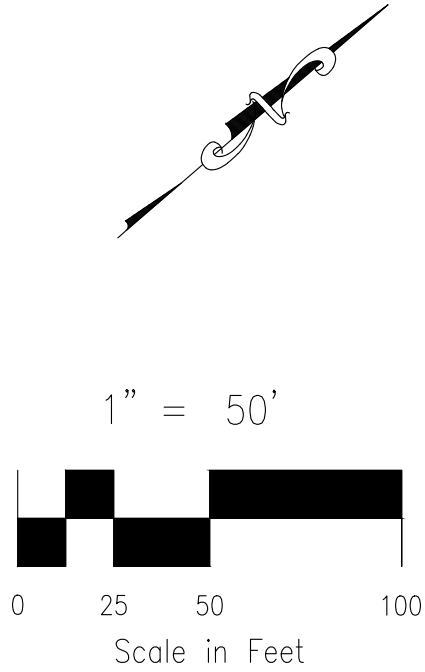
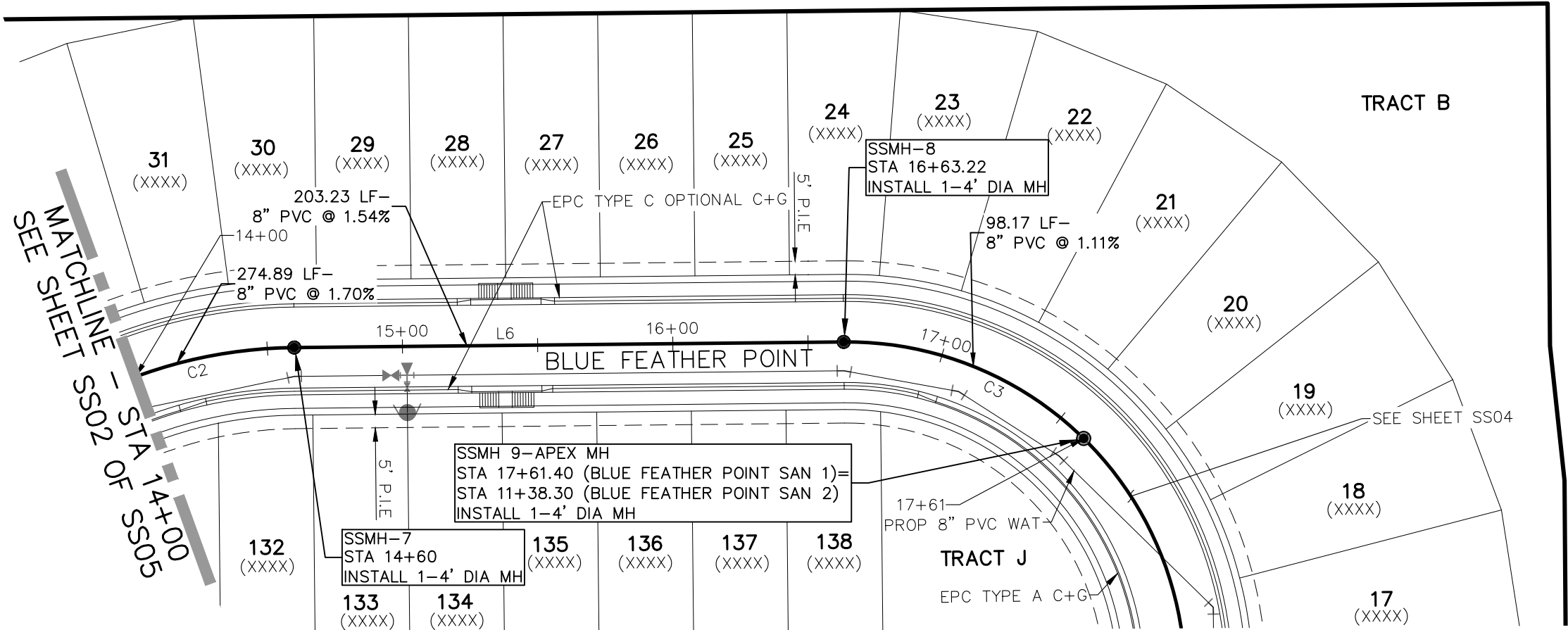
VIRGIL A. SANCHEZ, COLORADO P.E. NO. 37160

FOR AND ON BEHALF OF VIRGIL A. SANCHEZ, INC.

REVISIONS:	NO.	DATE:	BY:	DESCRIPTION:	APPROVED BY:	DATE:

THE ENGINEER PREPARING THESE PLANS WILL NOT BE RESPONSIBLE, OR LIABLE FOR, UNAUTHORIZED CHANGES TO OR USES OF THESE PLANS. ALL CHANGES TO THE PLANS MUST BE IN WRITING AND MUST BE APPROVED BY THE PREPARE OF THESE PLANS.

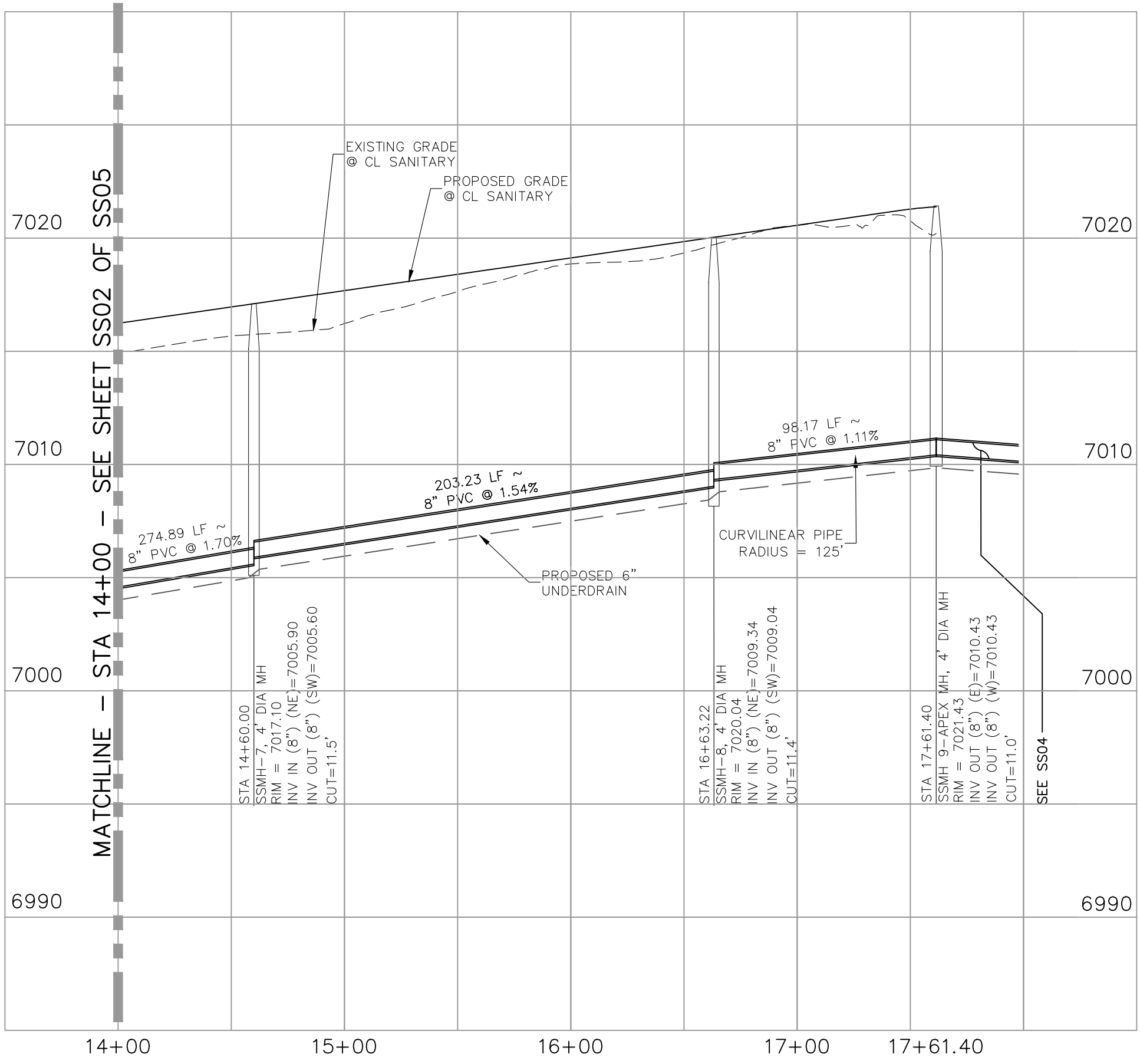
CAUTION



SANITARY LINE TABLE			
Line #	Length	Direction	
L6	203.23	N40° 10' 49.19"E	

SANITARY CURVE TABLE			
Curve #	Length	Radius	Delta
C2	274.89	175.00	90.00
C3	98.17	125.00	45.00

BLUE FEATHER POINT SANITARY 1
STA 14+00.00 TO STA 17+61.40



BLUE FEATHER POINT SANITARY 1 STA 14+00.00 TO STA 17+61.40

REVISIONS:

NO.	DATE	BY	DESCRIPTION	APPROV'D. BY	DATE

FOR AND ON BEHALF OF VIRGIL A. SANCHEZ, INC.

212 N. WAHATCH AVE. STE 305
COLORADO SPRINGS CO 80903
PHONE: 719.555.5465

CIVIL CONSULTANTS, INC.

DATE: 12/23/2021

DESIGNED BY: CWW
DRAWN BY: CWW
CHECKED BY: VAS

DATE: 12/23/2021

SHEET 3 OF 9

SS03

COPPER CHASE AT STERLING RANCH

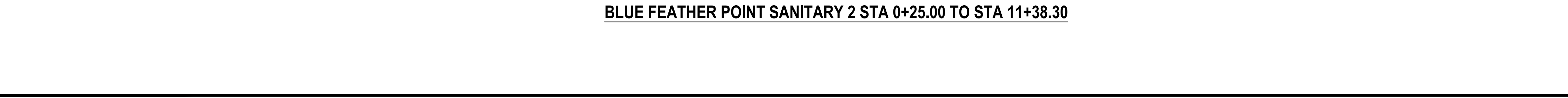
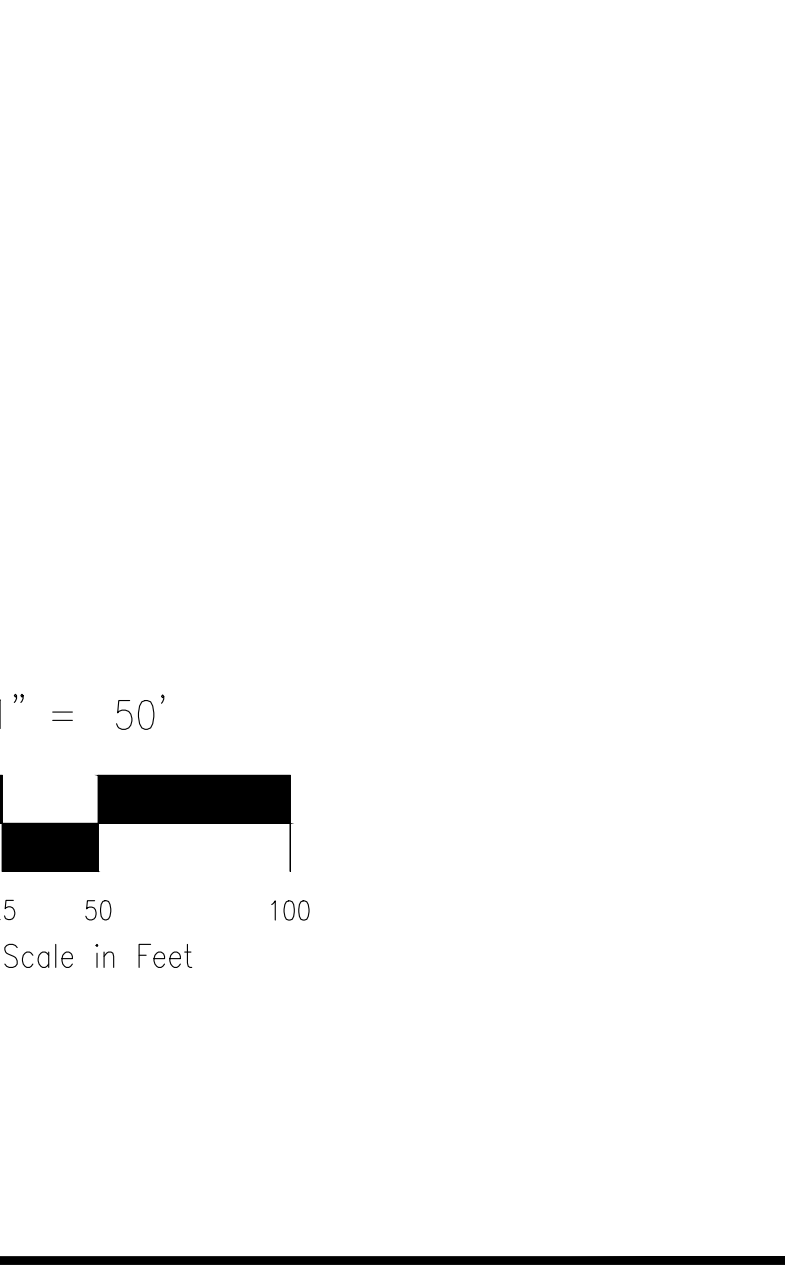
SANITARY SEWER PLANS

PROJECT NO. 09-014

SCALE: HORIZONTAL: 1"=50'
VERTICAL: 1"=5'

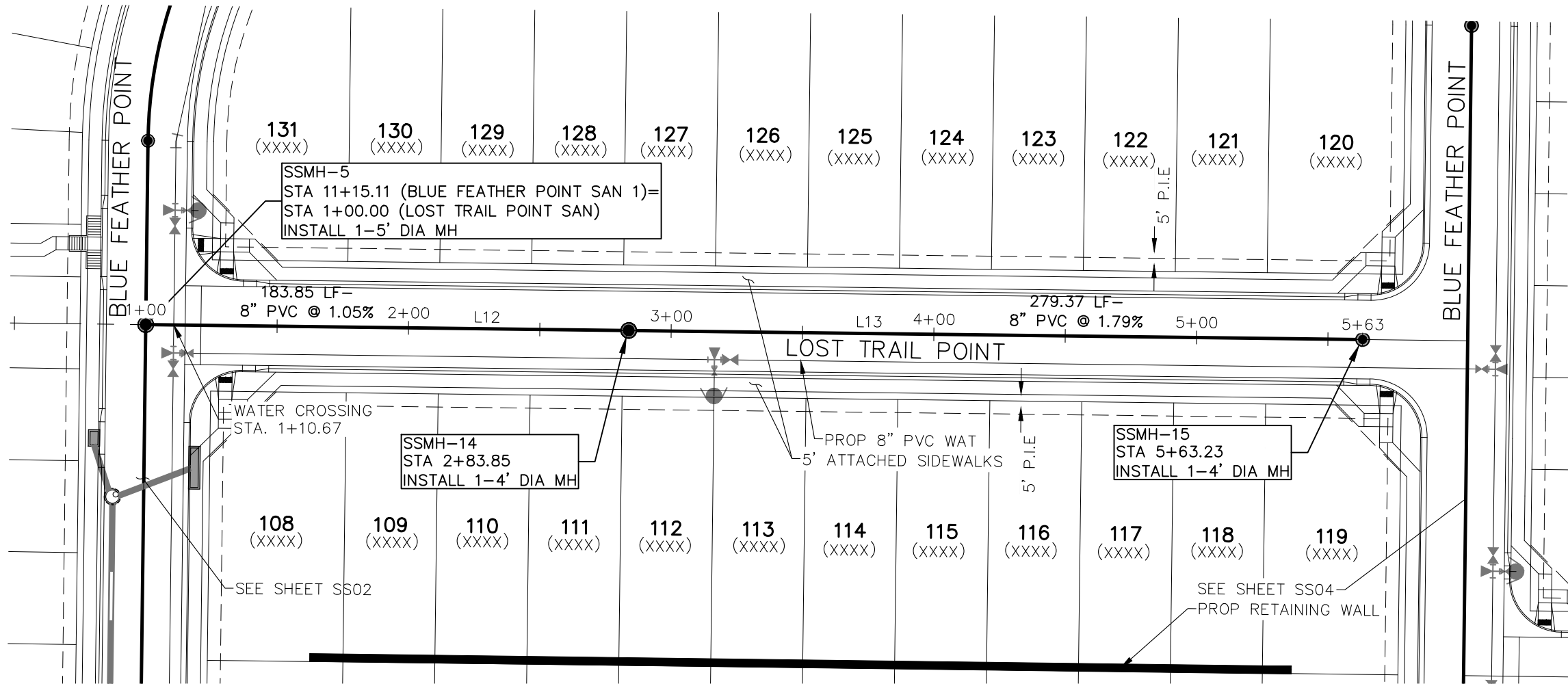
THE ENGINEER PREPARING THESE PLANS WILL NOT BE RESPONSIBLE, OR LIABLE FOR, UNAUTHORIZED CHANGES TO OR USES OF THESE PLANS. ALL CHANGES TO THE PLANS MUST BE IN WRITING AND MUST BE APPROVED BY THE PREPARED OF THESE PLANS.

CAUTION

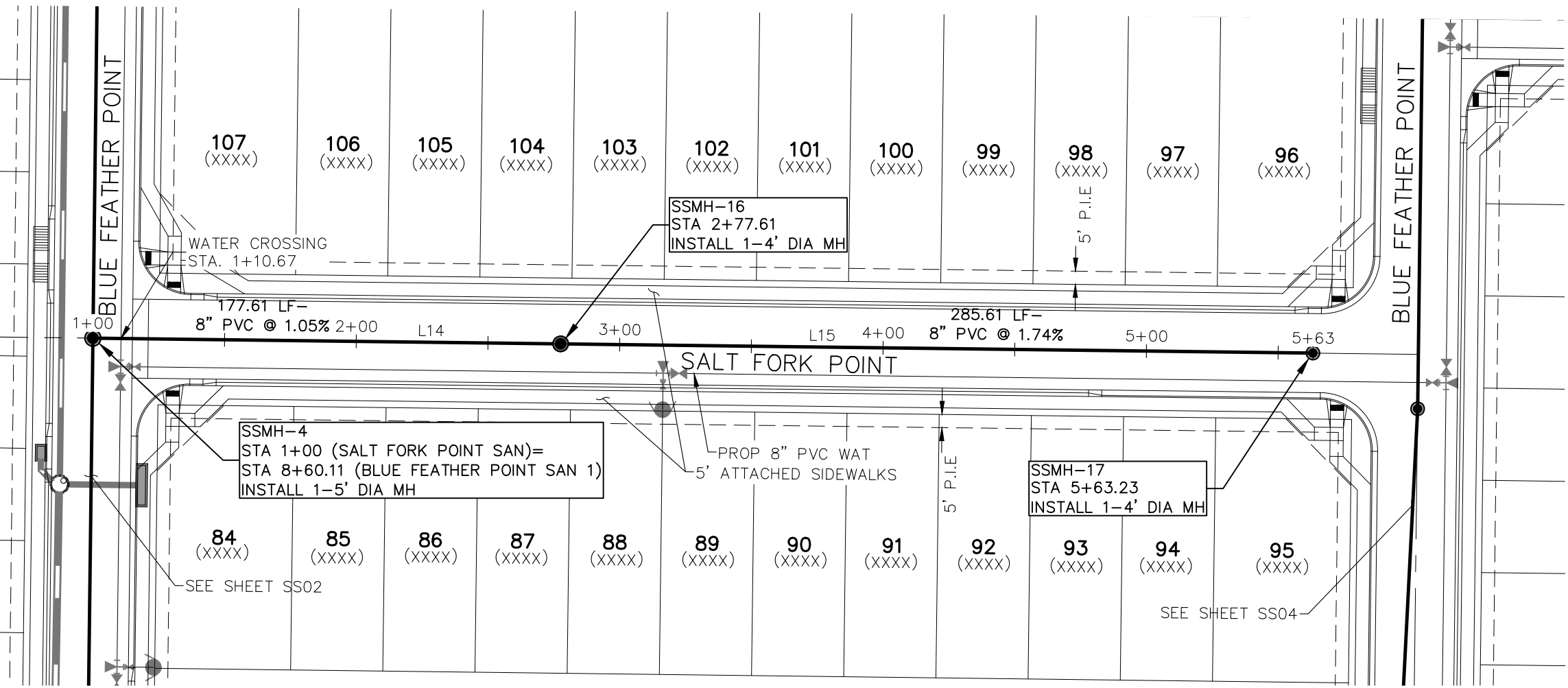


Curve #	Length	Radius	Delta
C4	125.70	125.00	57.62
C5	132.26	125.00	60.62
C6	98.17	125.00	45.00

[illegible]

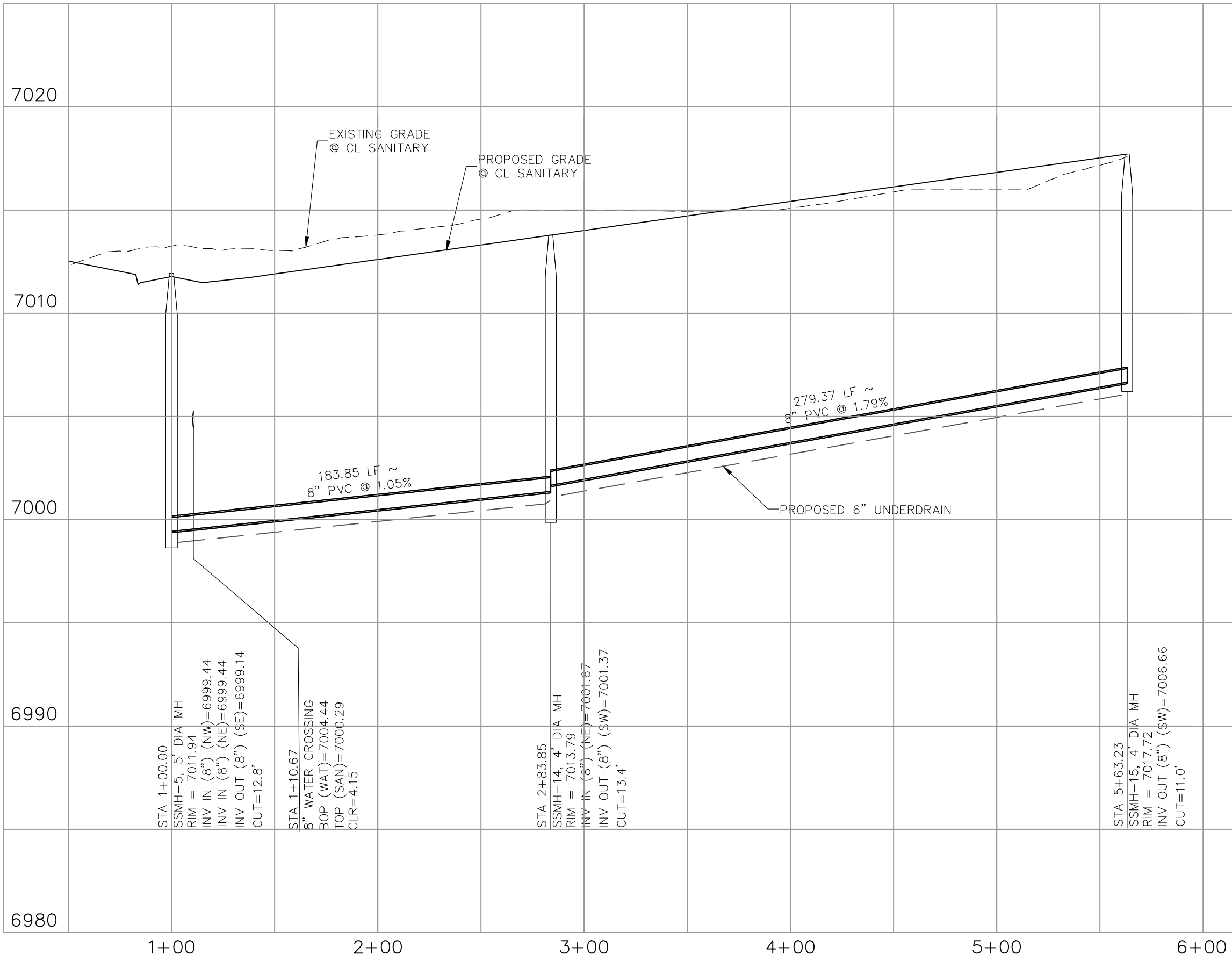


LOST TRAIL POINT SANITARY
STA 1+00.00 TO STA 5+63.23

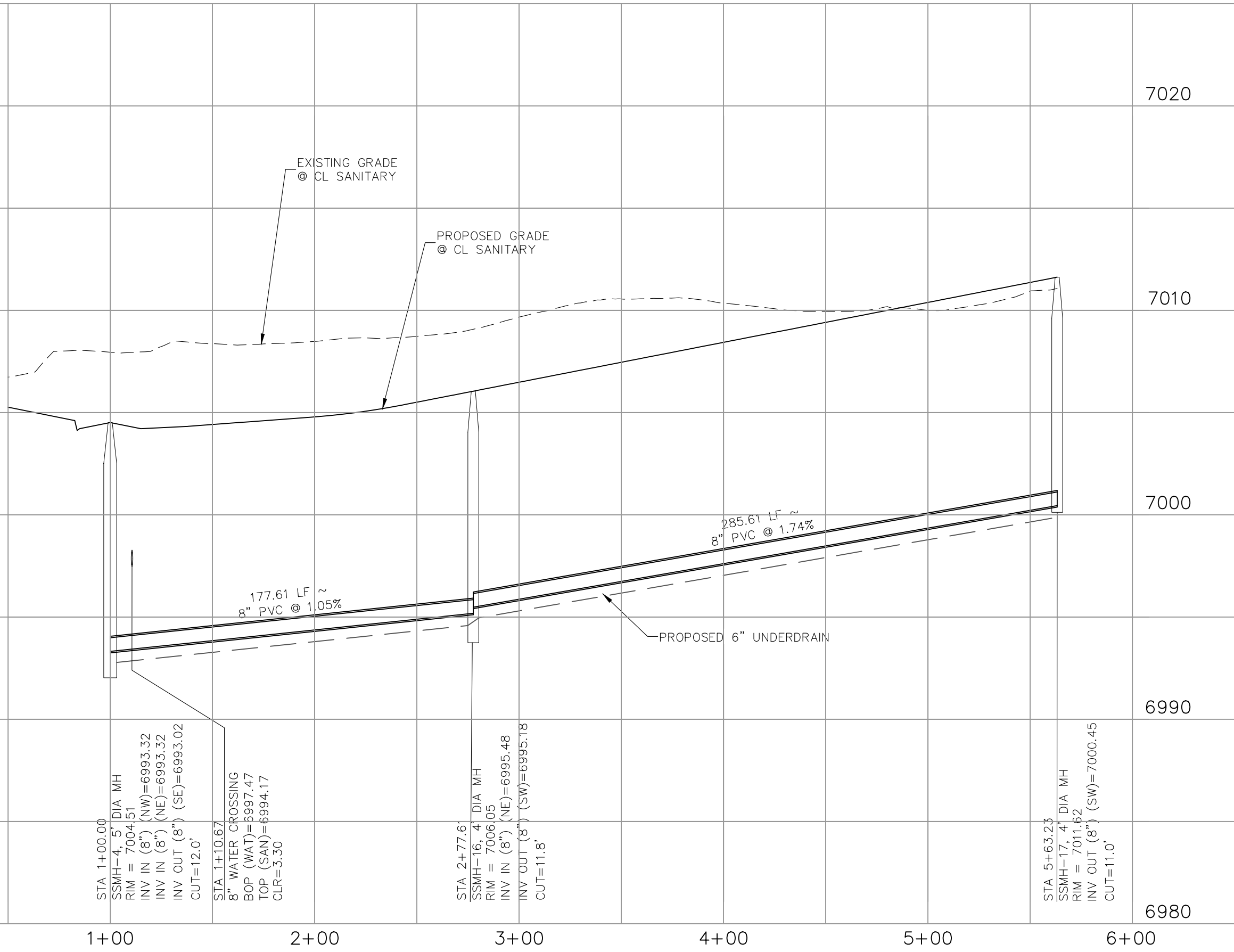


SALT FORK POINT SANITARY
STA 1+00.00 TO STA 5+63.23

PARCEL LINE TABLE		
Line #	Length	Direction
L12	183.85	N40° 10' 49.19"E
L13	279.37	N40° 10' 49.19"E
L14	177.61	N40° 10' 49.19"E
L15	285.61	N40° 10' 49.19"E



LOST TRAIL POINT SANITARY STA 1+00.00 TO STA 5+63.23



SALT FORK POINT SANITARY STA 1+00.00 TO STA 5+63.23

COPPER CHASE AT STERLING RANCH

SANITARY SEWER PLANS

PROJECT NO. 09-014	SCALE: HORIZONTAL: 1"=50'	DATE: 12/23/2021
DESIGNED BY: CWW	DRAWN BY: CWW	CHECKED BY: VAS
		SHEET 5 OF 9
		SS05

212 N WAHATCH AVE, STE 305
COLORADO SPRINGS, CO 80903
PHONE: 719.555.5465



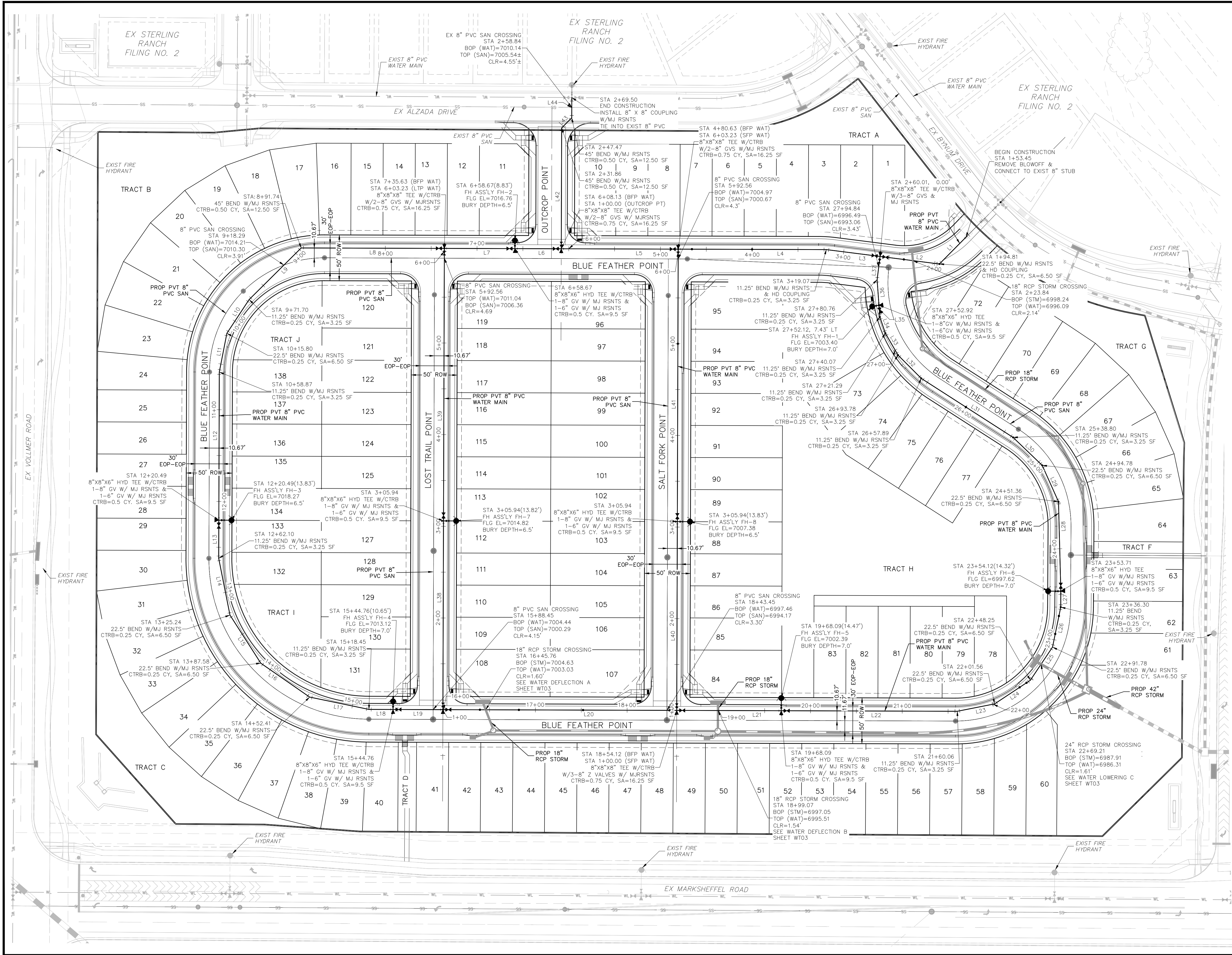
VIRGIL A. SANCHEZ, COLORADO P.E. NO. 37160

FOR AND ON
BEHALF OF
CIVIL CONSULTANTS,
INC.

REVISONS:	NO.	DATE:	BY:	DESCRIPTION:	APPROV'D:	BY:	DATE:

THE ENGINEER PREPARING THESE PLANS WILL NOT BE RESPONSIBLE, OR LIABLE FOR, UNAUTHORIZED CHANGES TO OR USES OF THESE PLANS. ALL CHANGES TO THE PLANS MUST BE IN WRITING AND MUST BE APPROVED BY THE PREPARED BY THESE PLANS.

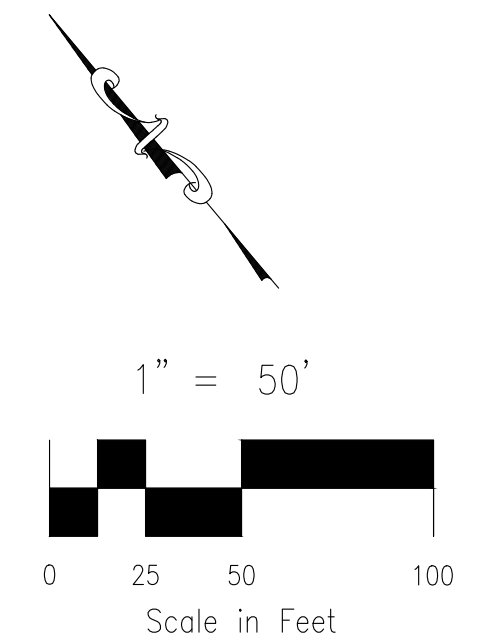
CAUTION



WATER CL LINE TABLE		
LINE	LENGTH	DIRECTION
L1	41.37	S84° 45' 52.15"W
L2	65.20	N42° 44' 53.31"W
L3	59.06	N42° 44' 53.31"W
L4	161.56	N49° 49' 03.22"W
L5	127.50	N49° 49' 10.26"W
L6	50.54	N49° 49' 12.18"W
L7	76.96	N49° 49' 10.81"W
L8	156.12	N49° 49' 10.81"W
L9	79.95	S85° 13' 22.43"W
L10	44.10	S73° 26' 56.78"W
L11	43.08	S51° 02' 19.13"W
L12	161.61	S40° 10' 49.19"W
L13	41.61	S40° 10' 49.19"W
L14	63.13	S28° 48' 06.52"W
L15	62.36	S7° 21' 34.28"W
L16	64.83	S15° 15' 42.96"E
L17	66.03	S38° 13' 43.75"E
L18	26.31	S49° 49' 10.81"E
L19	54.36	S49° 49' 10.81"E
L20	255.00	S49° 49' 10.81"E

WATER CL LINE TABLE		
LINE	LENGTH	DIRECTION
L21	113.97	S49° 49' 10.62"E
L22	191.97	S49° 49' 10.92"E
L23	41.51	S61° 14' 07.47"E
L24	46.68	S83° 27' 39.97"E
L25	43.54	N73° 47' 14.03"E
L26	44.52	N51° 35' 06.76"E
L27	17.41	N40° 21' 31.02"E
L28	97.65	N38° 29' 54.10"E
L29	43.42	N15° 53' 15.90"E
L30	44.02	N6° 09' 31.83"W
L31	119.09	N17° 15' 30.71"W
L32	35.89	N4° 56' 21.27"W
L33	27.51	N9° 58' 36.28"E
L34	18.79	N21° 05' 44.64"E
L35	12.85	N35° 50' 15.25"E
L36	27.84	N35° 50' 15.25"E
L37	25.67	N47° 15' 06.71"E
L38	205.94	N40° 10' 49.04"E
L39	297.28	N40° 10' 49.19"E
L40	205.94	N40° 10' 49.19"E

WATER CL LINE TABLE		
LINE	LENGTH	DIRECTION
L41	297.28	N40° 10' 49.18"E
L42	131.86	N40° 10' 49.62"E
L43	15.61	N84° 52' 03.96"E
L44	35.87	N40° 14' 56.75"E



COPPER CHASE AT STERLING RANCH

WATER PLANS

DATE: 12/23/2021

SCALE: HORIZONTAL: 1"=50' VERTICAL: N/A

PROJECT NO. 09-014

DESIGNED BY: CWW


DRAWN BY: CWW

CHECKED BY: VAS

SHEET 6 OF 9

WT02

212 N WAHATCHAVE, STE 305
COLORADO SPRINGS, CO 80903
PHONE: 719.555.5465

CIVIL CONSULTANTS, INC.

FOR AND ON BEHALF OF
CIVIL CONSULTANTS, INC.

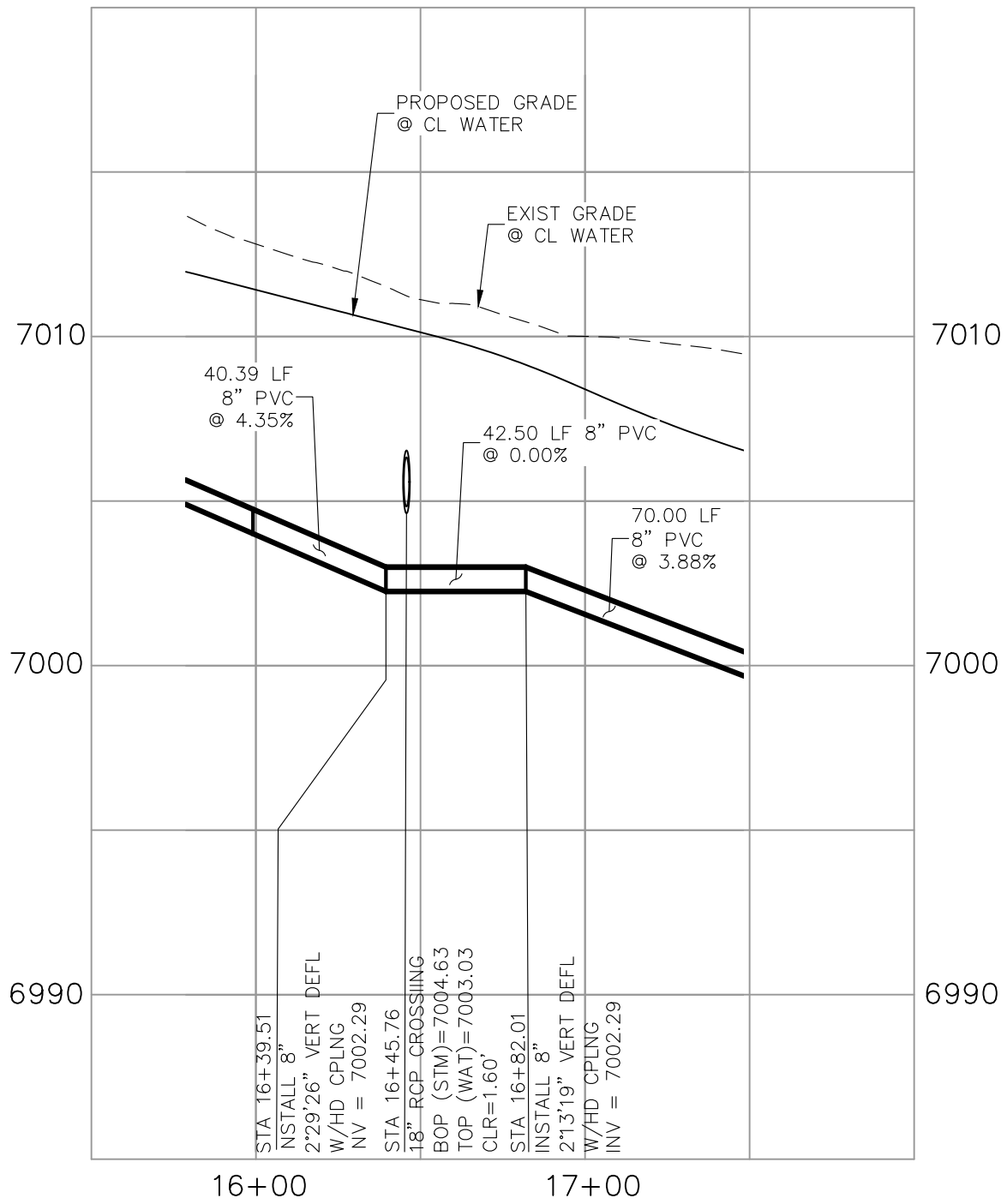
REVISIONS:

NO.	DATE:	BY:	DESCRIPTION:

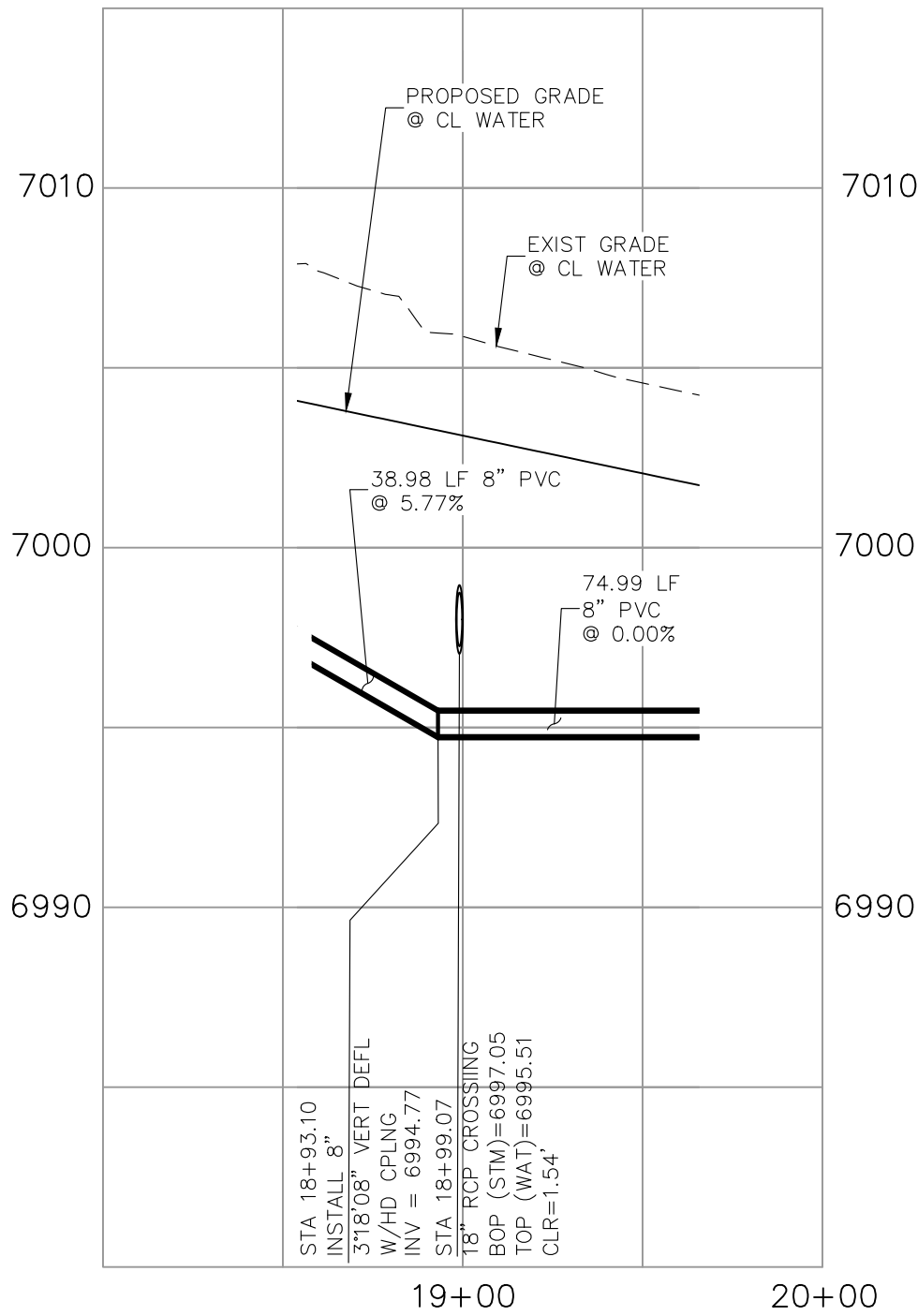
VIRGIL A. SANCHEZ, COLORADO P.E. NO. 37160

THE ENGINEER PREPARING THESE PLANS WILL NOT BE RESPONSIBLE, OR LIABLE FOR, UNAUTHORIZED CHANGES TO OR USES OF THESE PLANS. ALL CHANGES TO THE PLANS MUST BE IN WRITING AND MUST BE APPROVED BY THE PREPARED OF THESE PLANS.

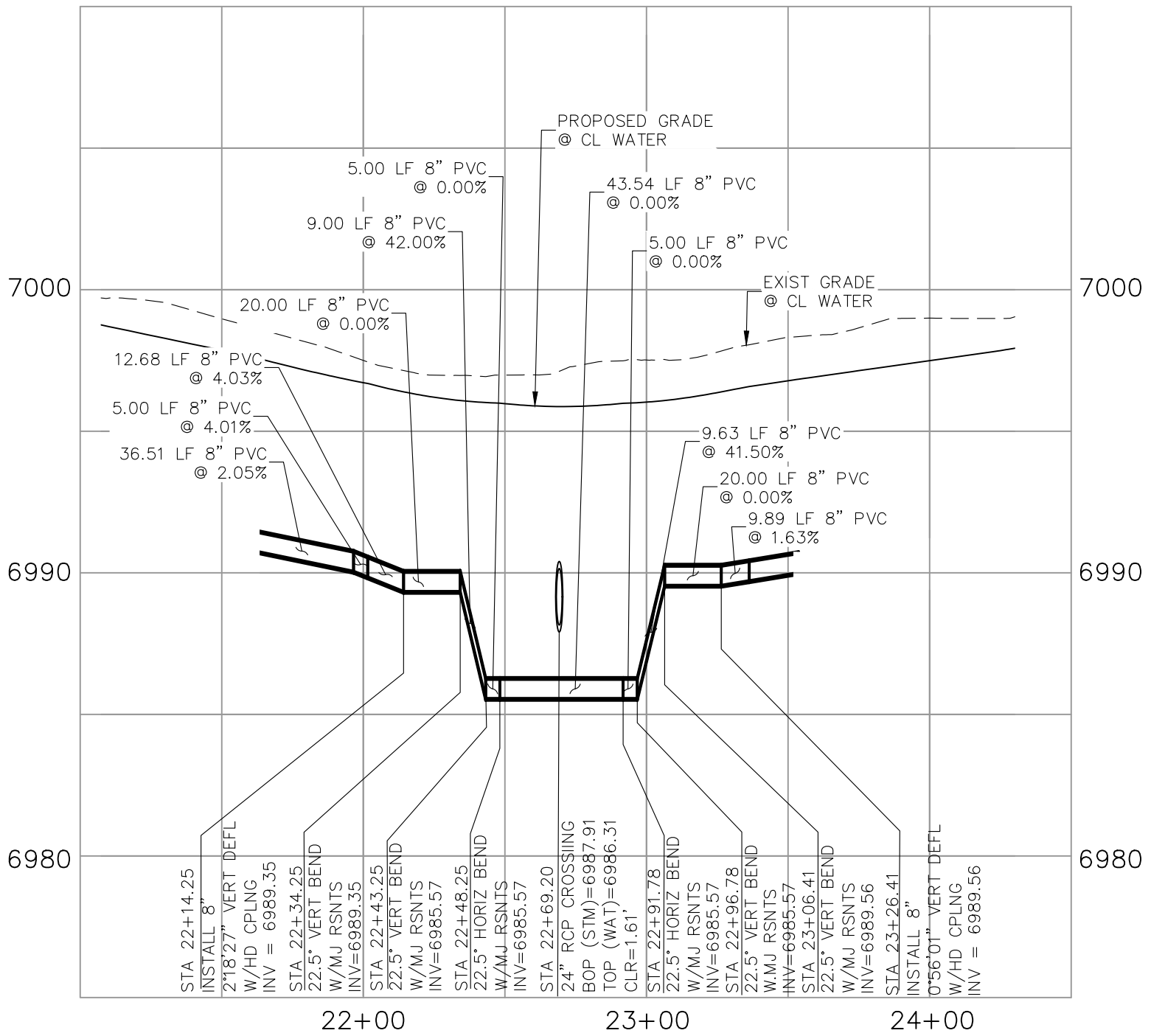
CAUTION



BLUE FEATHER POINT
WATER DEFLECTION A
STA 16+39.51



BLUE FEATHER POINT
WATER HALF DEFLECTION B
STA 18+93.10



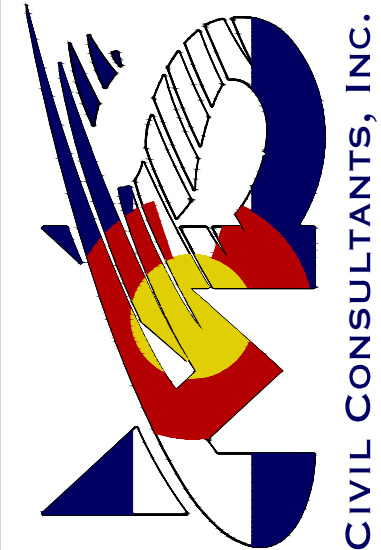
BLUE FEATHER POINT
WATER LOWERING C
STA 22+34.25

REVISIONS:		APPROVED BY:		DATE:	
NO.	DATE	BY	DESCRIPTION	APPROVED BY	DATE
THE ENGINEER PREPARING THESE PLANS WILL NOT BE RESPONSIBLE, OR LIABLE FOR, UNAUTHORIZED CHANGES TO OR USES OF THESE PLANS. ALL CHANGES TO THE PLANS MUST BE IN WRITING AND MUST BE APPROVED BY THE PREPARED OF THESE PLANS.					
CAUTION					

VIRGIL A. SANCHEZ, COLORADO, P.E. NO. 37160

FOR AND ON
BEHALF OF
WKS CIVIL
CONSULTANTS,
INC.

212 N. WAHATCH AVE., STE 305
COLORADO SPRINGS, CO 80903
PHONE: 719.555.5465



COPPER CHASE AT STERLING RANCH

WATER LOWERING/DEFLECTION DETAILS

PROJECT NO. 09-014

SCALE:

HORIZONTAL:

VERTICAL:

DESIGNED BY: CWW

DRAWN BY: CWW

CHECKED BY: VAS

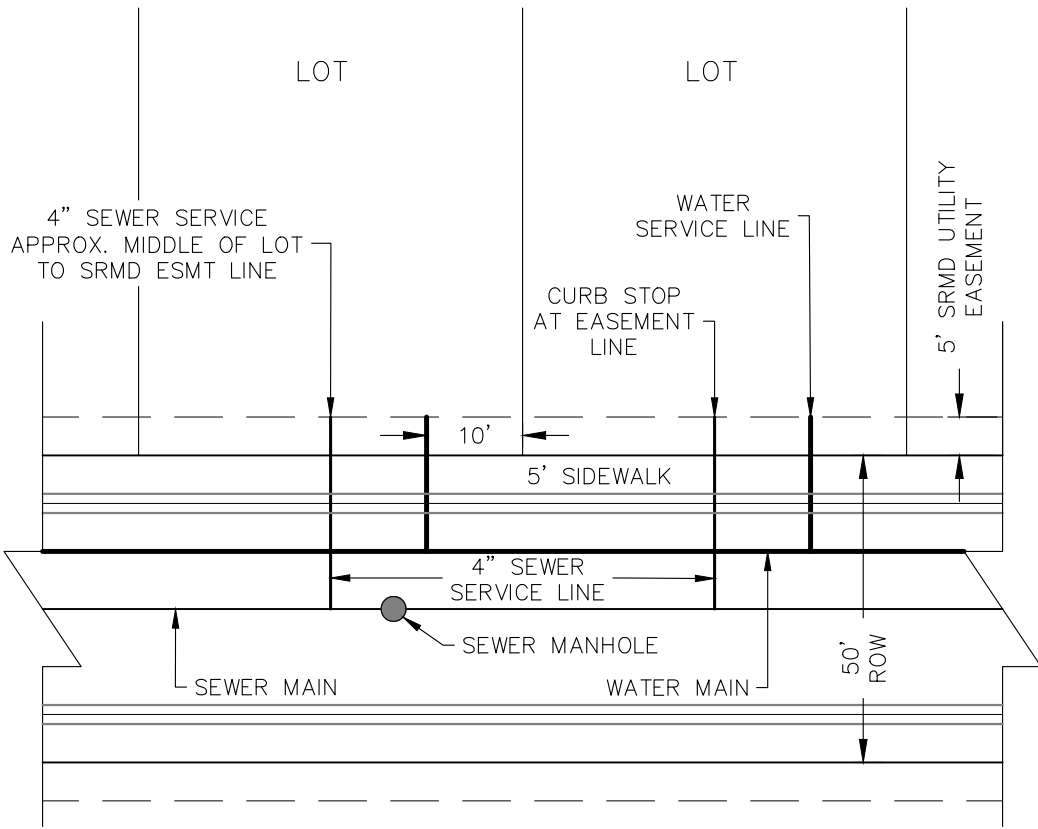
DATE: 12/23/2021

SHEET 7 OF 9

WT03

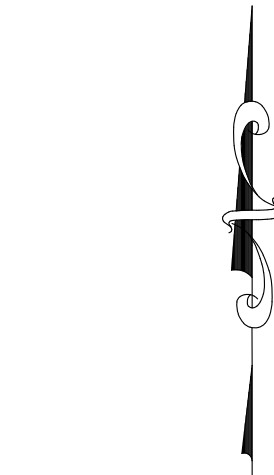
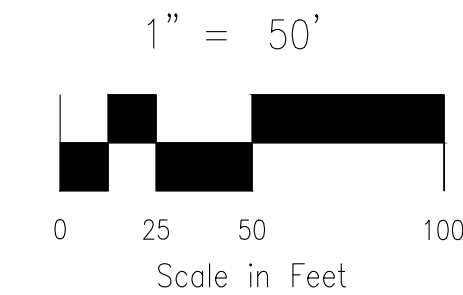
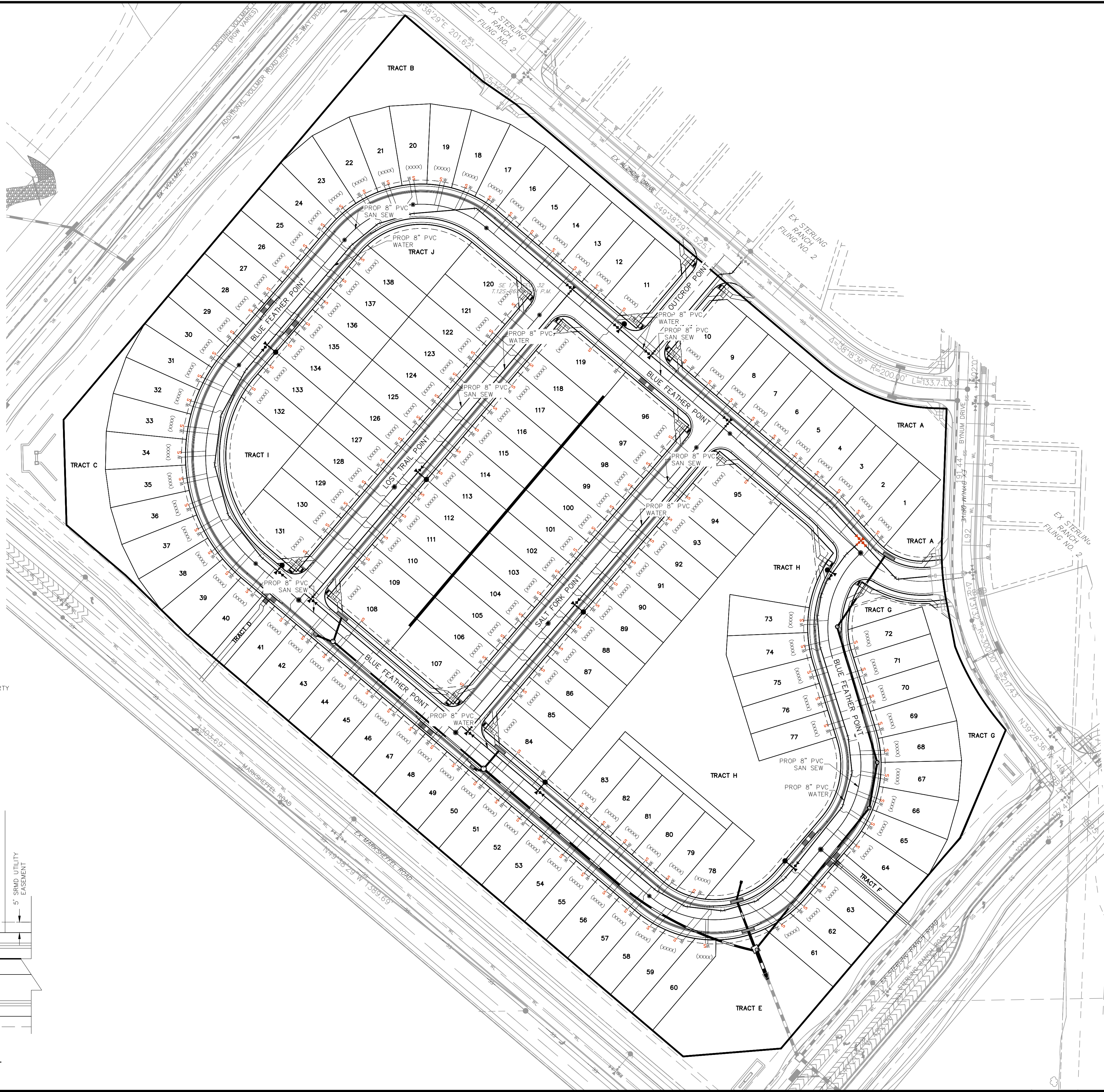
NOTES:

1. WATER SERVICE TO BE 10' FROM "DOWNSTREAM" PROPERTY LINE AND EXTENDED TO SRMD UTILITY EASEMENT LINE.
2. SEWER SERVICE TO BE PLACED APPROXIMATELY IN THE MIDDLE OF THE LOT AND EXTENDED TO SRMD UTILITY EASEMENT LINE.
3. SERVICE SHALL BE MARKED WITH 2"x4" POST AT TERMINATION POINT FOR LOCATION DURING CONNECTION TO RESIDENCE. POSTS SHALL BE SPRAY-PAINTED BLUE FOR WATER AND GREEN FOR SEWER.



UTILITY SERVICE LOCATIONS

NTS



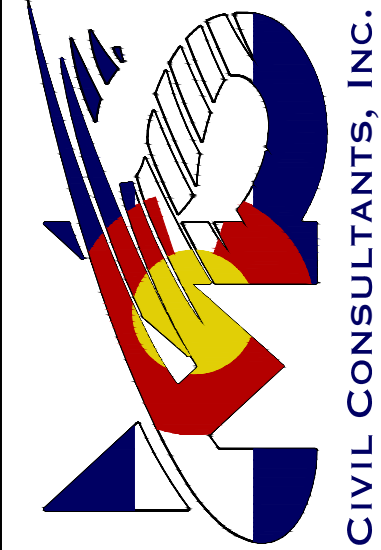
FOR LOCATING
& MARKING
GAS,
ELECTRIC,
WATER &
TELEPHONE
LINES

FOR BURIED UTILITY INFORMATION
48 HRS BEFORE YOU DIG
CALL 1-800-922-1987

FOR AND ON
BEHALF OF
CIVIL CONSULTANTS,
INC.

VIRGIL A. SANCHEZ, COLORADO P.E. NO. 37160

212 N. WABATCH AVE., STE 305
COLORADO SPRINGS, CO 80903
PHONE: 719.555.5465



COPPER CHASE AT STERLING RANCH

UTILITY SERVICE PLANS

PROJECT NO. 09014
DESIGNED BY: CW
DRAWN BY: TAU
CHECKED BY: VAS

SCALE:
HORIZONTAL:
1"=50'

DATE: 12/23/2021

VERTICAL:
1"=50'

UT01

SHEET 8 OF 9

1"=50'

THE ENGINEER PREPARING THESE PLANS WILL NOT BE RESPONSIBLE, OR LIABLE FOR, UNAUTHORIZED CHANGES TO OR USES OF THESE PLANS. ALL CHANGES TO THE PLANS MUST BE IN WRITING AND MUST BE APPROVED BY THE PREPAREY OF THESE PLANS.

CAUTION

