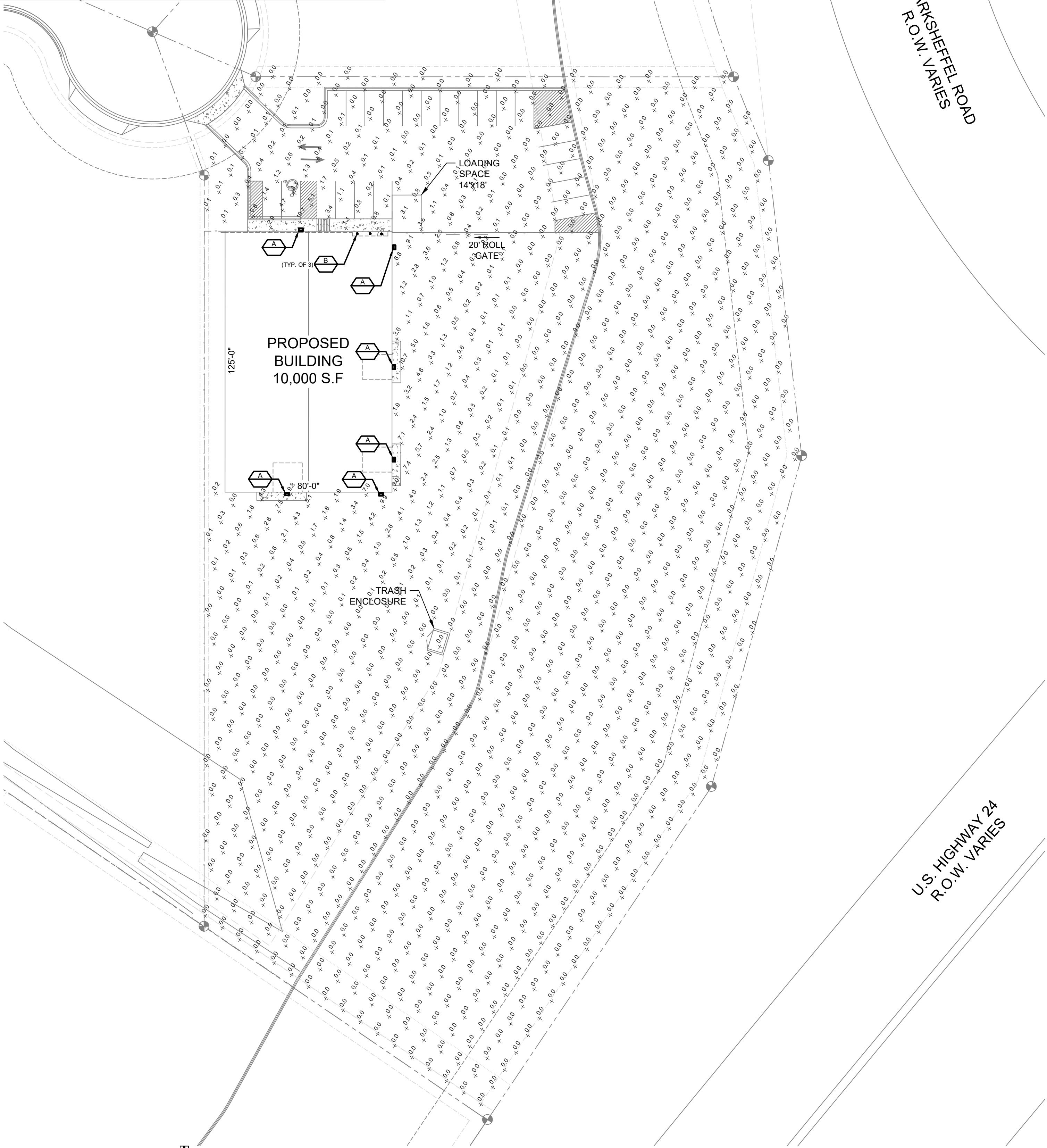
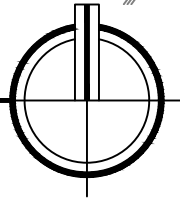


PLOT DATE: 04/15/21 1:28 PM
 BY: JEMMA
 PROJ. FILE: P:\Vermers Construction\Grumpy Trumpsters Site\Grumpy Trumpster - Lot 4 - Photometrics.dwg
 PRG: PLOT

Schedule																
Symbol	Label	Image	QTY	Manufacturer	Catalog Number	Description	Lamp	Number Lamps	Filename	Lumens per Lamp	Lumen Multiplier	LLF	Wattage	Efficiency	Distribution	Polar Plot
	A		6	Lithonia Lighting	WDGE2 LED P5 40K 80CRI VF	WDGE2 LED WITH P5 - PERFORMANCE PACKAGE, 4000K, 80CRI, VISUAL COMFORT FORWARD OPTIC		1	WDGE2_LED_P5_40K_80CRI_VF.ies	5996	1	0.9	48.44	100%	TYPE III, VERY SHORT, BUG RATING: B1 - U0 - G1	
	B		3	Lithonia Lighting	LDN6 40/15 LO6AR LSS	6IN LDN, 4000K, 1500LM, CLEAR, SEMI-SPECULAR REFLECTOR, CRI80		1	LDN6_40_15_LO6AR_LSS.ies	1516	1	0.92	17.52	100%	DIRECT, SC0=1.02, SC90=1.03	

Statistics						
Description	Symbol	Avg	Max	Min	Max/Min	Avg/Min
Site		0.3 fc	10.7 fc	0.0 fc	N/A	N/A

PHOTOMETRICS SITE PLAN
 SCALE: 1/32" = 1'-0"



PPR-21-011

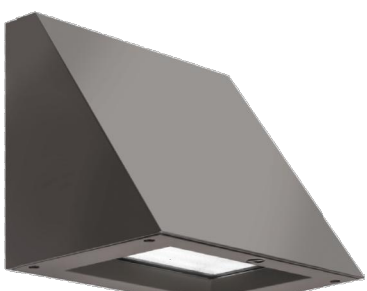
51EC INC.
 31 NORTH TEJON ST, SUITE 304
 COLORADO SPRINGS, CO 80903
 FIFTYONEEC.COM | 719.368.7394

THIS DOCUMENT AND ITS CONTENTS ARE THE WORK PRODUCT AND PROPERTY OF 51EC, INC., WHICH RETAINS ALL COMMON LAW, STATUTORY AND OTHER RESERVED RIGHTS, INCLUDING THE COPYRIGHT.

CBP 2, 1 - LOT 4
 PHOTOMETRICS
 7775 GARY WATSON POINT
 COLORADO SPRINGS, CO 80915

REV	DESCRIPTION	DRAWN	CHECK	APPR	DATE

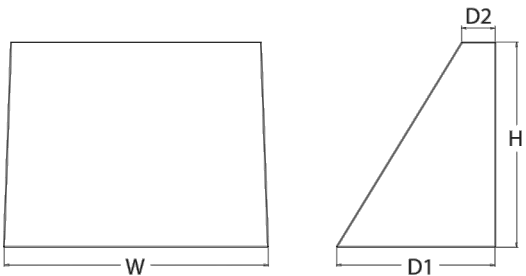
ISSUANCE:	ISSUED FOR REVIEW
CLIENT:	HAMMERS CONSTRUCTION 1411 WOOLSEY HEIGHTS COLORADO SPRINGS, CO 80915
ARCHITECT:	
PROJECT NO:	5151-20-05E
TITLE:	PHOTOMETRICS SITE PLAN
SHEET NO:	9 OF 11



WDGE2 LED
Architectural Wall Sconce

Specifications

Depth (D1): 7"
Depth (D2): 1.5"
Height: 9"
Width: 11.5"
Weight: 13.5 lbs
(without options)



Catalog Number	WDGE2 LED P5 40K 80CRI VF
Notes	
Type	A

Hit the Tab key or mouse over the page to see all interactive elements.

Introduction

The WDGE LED family is designed to meet specifier's every wall-mounted lighting need in a widely accepted shape that blends with any architecture. The clean rectilinear design comes in four sizes with lumen packages ranging from 1,200 to 25,000 lumens, providing a true site-wide solution. Embedded with LightBulb AIR wireless controls, the WDGE family provides additional energy savings and code compliance.

WDGE2 delivers up to 6,000 lumens with a soft, non-pixelated light source, creating a visually comfortable environment. When combined with multiple integrated emergency battery backup options, including an 18W cold temperature option, the WDGE2 becomes the ideal wall-mounted lighting solution for pedestrian scale applications in any environment.

WDGE LED Family Overview

Luminaire	Standard EM, 0° C	Cold EM, -20° C	Sensor	P1	P2	P3	P4	P5	P6
WDGE1 LED	4W	--	--	1,200	2,000	--	--	--	--
WDGE2 LED	10W	18W	Standalone / nLight	1,200	2,000	3,000	4,500	6,000	--
WDGE3 LED	15W	18W	Standalone / nLight	7,500	8,500	10,000	12,000	--	--
WDGE4 LED	--	--	Standalone / nLight	12,000	16,000	18,000	20,000	22,000	25,000

Ordering Information

EXAMPLE: WDGE2 LED P3 40K 80CRI VF MVOLT SRM DDBXD

Series	Package	Color Temperature	CR	Distribution	Voltage	Mounting	Shipped included	Shipped separately
WDGE2 LED	P1	P15W	27K 2700K	80CRI	VF	Visual comfort for-wash flow	SRM	30inch Architectural wall spacer
	P2	P25W	30K 3000K	90CRI	347	Visual comfort	SRM	Surface mounting bracket
	P3	P35W	30K 3000K	90CRI	480	Visual comfort wide	SRM	Surface mounting bracket
	P4	P45W	40K 4000K	90CRI	480	Visual comfort wide	ICW	Indirect Canopy/Ceiling Washer bracket (dry/damp locations only)
	P5	P55W	50K 5000K	90CRI	480	Visual comfort wide	ICW	Indirect Canopy/Ceiling Washer bracket (dry/damp locations only)

Options	Switch
E4WH Emergency battery backup, Certified in CA Title 20 MAEDBS (90K, 5° C, min)	DDBXD Dark bronze
E4WH Emergency battery backup, Certified in CA Title 20 MAEDBS (100K, 5° C, min)	DDBXD Dark bronze
E4WH Emergency battery backup, Certified in CA Title 20 MAEDBS (18W, -20° C, min)	DDBXD Dark bronze
PE1 Photocell, Button Type	DDBXD Dark bronze
DS1 Dual switching (comes with 2 drivers and 2 light engines; see page 3 for details)	DDBXD Dark bronze
DMG1 0-10V dimming wires pulled outside feature (for use with an external control, ordered separately)	DDBXD Dark bronze
BCE Bottom conduit entry for back box (PBW), Total of 4 entry points.	DDBXD Dark bronze
Standalone Sensors/Controls (only available with P15W & P25W)	DDBXD Dark bronze
PIR Bi-level (100/25%) motion sensor for 8-15' mounting heights. Intended for use on switched circuits with external dusk-to-dawn switching.	DDBXD Dark bronze
PIRH Bi-level (100/25%) motion sensor for 15-30' mounting heights. Intended for use on switched circuits with external dusk-to-dawn switching.	DDBXD Dark bronze
PIRHCIV Bi-level (100/25%) motion sensor for 8-15' mounting heights with photocell pre-programmed for dusk-to-dawn operation.	DDBXD Dark bronze
PIRHFCIV Bi-level (100/25%) motion sensor for 15-30' mounting heights with photocell pre-programmed for dusk-to-dawn operation.	DDBXD Dark bronze
Networked Sensors/Controls (only available with P15W & P25W)	DDBXD Dark bronze
NLTAR2 PIR nLight AIR Wireless enabled bi-level motion/ambient sensor for 8-15' mounting heights.	DDBXD Dark bronze
NLTAR2 PIRH nLight AIR Wireless enabled bi-level motion/ambient sensor for 15-30' mounting heights.	DDBXD Dark bronze
	DDBXD Dark bronze

LITHONIA LIGHTING COMMERCIAL OUTDOOR One Lithonia Way • Conyers, Georgia 30012 • Phone: 1-800-705-SERV (7378) • www.lithonia.com WDGE2 LED Rev. 01/04/21



FEATURES & SPECIFICATIONS

INTENDED USE — Typical applications include corridors, lobbies, conference rooms and private offices.
CONSTRUCTION — Galvanized steel mounting/plaster frame; galvanized steel junction box with bottom-hinged access covers and spring latches. Reflectors are retained by torsion springs. Vertically adjustable mounting brackets with central adjusters provide 3-1/4" total adjustment. Two combination 1/2"-3/4" and four 1/2" knockouts for straight-through conduit runs. Capacity: 8 (4 in, 4 out), No. 12 AWG conductors, rated for 90° C.
Accommodates 12"-3/4" inlet spacing.
Passive cooling thermal management for 25° C standard; high ambient (40° C) option available. Light engine and drivers are accessible from above or below ceiling.
Max ceiling thickness 1-1/2".
OPTICS — LEDs are binned to a 3-step SDCM; 80 CRI minimum, 90 CRI optional.
LED light source concealed with diffusing optical lens.
General illumination lighting with 1.5 S/M and 55° cutoff to source and source image.
Self-flanged anodized reflectors in specular, semi-specular, or matte diffuser finishes. Also available in white and black painted reflectors.
ELECTRICAL — Multi-volt (120-277V, 50/60Hz) 0-10V dimming drivers mounted to junction box, 10% or 7% minimum dimming level available.
0-10V dimming feature requires two (2) additional low-voltage wires to be pulled.
70% lumen maintenance at 60,000 hours.
LISTINGS — Certified to US and Canadian safety standards. Wet location standard (covered ceiling). IPSI rated. ENERGY STAR® certified product.
WARRANTY — 5-year limited warranty. Complete warranty terms located at: www.acuitybrands.com/support/technical-terms-and-conditions.
Note: Actual performance may differ as a result of end-user environment and application.
All values are design or typical values, measured under laboratory conditions at 25° C.
Specifications subject to change without notice.

ORDERING INFORMATION

Lead times will vary depending on options selected. Consult with your sales representative.

Example: LDN6 35/15 L06AR LSS MVOLT E2T0

Series	Color temperature	Lumens ¹	Aperture/Trim Color	Finish	Voltage
LDN6 6" round	27	2700K	05 500 lumens	LD6 Downlight	AR Clear
	30	3000K	07 750 lumens	LWS Walwash	WB White
	35	3500K	10 1000 lumens		BB Black
	40	4000K	15 1500 lumens		LSS Semi-specular
	50	5000K	20 2000 lumens		LD Matte diffuse

Driver	Options
G2T0 0-10V driver dims to 10%	SE ² Single fuse
G2T1 0-10V driver dims to 1%	TBW ³ White painted flange
D10 Minimum dimming 10% driver for use with JOT	TBL ³ Black painted flange
D11 Minimum dimming 1% driver for use with JOT	EL ⁴ Emergency battery pack with integral test switch, 10W Constant Power, Not Certified in CA Title 20 MAEDBS
E2T0 0-10V eLED driver with smooth and flicker-free dimming performance down to 10%	ELR ⁴ Emergency battery pack with remote test switch, 10W Constant Power, Not Certified in CA Title 20 MAEDBS
E2T1 0-10V eLED driver with smooth and flicker-free dimming performance down to 1%	ELSD ⁴ Emergency battery pack with self-diagnostics, integral test switch, 10W Constant Power, Not Certified in CA Title 20 MAEDBS
EDAB eLED DALI SOLIDVIE dim to dark	ELWCP ⁴ Emergency battery pack, 10W Constant Power with integral test switch. Certified in CA Title 20 MAEDBS
	ELWCPR ⁴ Emergency battery pack, 10W Constant Power with remote test switch. Certified in CA Title 20 MAEDBS
	NPI140 ⁵ nLight® network power/daypack pack with 0-10V dimming for non-eLED drivers (G2T0, G2T1)
	NPI140ER ⁵ nLight® network power/daypack pack with 0-10V dimming for non-eLED drivers (G2T0, G2T1). ER controls fixtures on emergency circuit.

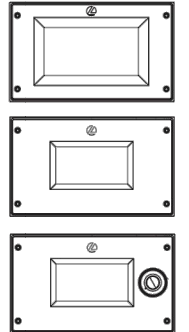
Accessories: Order as separate catalog number.
PS105CEP P4C Power Sentry battery pack, T20 compliant, field installable, 10w constant power
EAC ISOM 3Z Compact Interruptible emergency AC power system
EAC ISOM 1Z Compact Interruptible emergency AC power system
GRAB4 IZ Oversized trim ring with 8" outside diameter

- Notes:
1 Overall height varies based on lumen package; refer to dimensional chart on page 1.
2 Not available with fixtures.
3 Not available with emergency options.
4 Must specify voltage (20V or 277V).
5 Available with clear (40) reflector only.
6 12" of plenum depth or top access required for battery pack maintenance.
7 Specify voltage, ER for use with generator supply (ER power. Will require an emergency hot and normal hot feed.
8 Fixture begins at 80% light level. Must be certified with NP-SABZ or NP-SABZ LK. Only available with L2T0 and L2T1 drivers.
9 Not available with CP NP-SABZ, NP-SABZER, NPP140, NPP140ER or N40 options.
10 NLTAR2, NLTAR2ER and NLTAR2ER not recommended for metal ceiling installations.
11 Fixture height is 4.5" for all lumen packages with 160.
12 Must specify voltage for 2000lm and above. 5000lm with marked spacing 24 x 24 W x 14 H. Not available with emergency battery pack option.
13 Must specify 0T0 or 0T1 drivers. Not available with nLight options. Not available with CP. Not recommended for metal ceiling installation. Not for use with emergency backup power systems other than battery packs.

DOWNLIGHTING LDN6

Accessories

Ordered and shipped separately.
WDGE15W DDBXD-U WDGE15W Architectural Wall Spacer (specify finish)
WDGE2PBWB DDBXD-U WDGE2 surface-mounted back box (specify finish)



Default configuration with no sensors/controls.
Power Packages: P1, P2, P3, P4, P5
Small Window (SW) configuration
Power Packages: P15W, P25W, P35W
Configuration with sensors/controls
Power Packages: P15W, P25W, P35W

- NOTES:
1 P1-P5 not available with sensors/controls. Sensors/controls only available with P15W, P25W and P35W.
2 50K not available in 90CRI.
3 24V and 480V not available with E4WH, E10WH, E20WC or DS.
4 PE not available in 480V or with sensors/controls.
5 DS option not available with E4WH, E10WH, E20WC or sensors/controls.
6 DMG1 option not available with sensors/controls.
7 Not qualified for DLC. Not available with emergency battery backup or sensors/controls.

Performance Data

Lumen Output

Lumen values are from photometric tests performed in accordance with IESNA LM-79-08. Data is considered to be representative of the configurations shown, within the tolerances allowed by Lighting Facts. Contact factory for performance data on any configurations not shown here.

Performance Package	System Watts	LED Type	SDS (2700K, 80 CRI)					SDS (3000K, 80 CRI)					SDS (3500K, 80 CRI)					SDS (4000K, 80 CRI)					SDS (5000K, 80 CRI)											
			Lumens	LPW	1	0	0	0	Lumens	LPW	1	0	0	Lumens	LPW	1	0	0	Lumens	LPW	1	0	0	Lumens	LPW	1	0	0	Lumens	LPW	1	0	0	
P1/P15W	10W	VF	1,166	119	0	0	0	0	1,209	123	0	0	0	0	1,251	128	0	0	0	1,256	128	0	0	0	1,254	128	0	0	0	1,254	128	0	0	0
		VF	1,197	122	0	0	0	0	1,241	126	0	0	0	0	1,284	131	0	0	0	1,289	131	0	0	0	1,286	131	0	0	0	1,286	131	0	0	0
P2/P25W	15W	VF	1,878	129	1	0	0	0	1,947	134	1	0	0	0	2,015	139	1	0	0	2,023	139	1	0	0	2,019	139	1	0	0	2,019	139	1	0	0
		VF	1,927	133	1	0	0	0	1,997	137	1	0	0	0	2,067	142	1	0	0	2,075	143	1	0	0	2,071	143	1	0	0	2,071	143	1	0	0
P3/P35W	23W	VF	2,908	129	1	0	0	0	3,015	134	1	0	0	0	3,119	138	1	0	0	3,132	139	1	0	0	3,126	139	1	0	0	3,126	139	1	0	0
		VF	2,983	132	1	0	0	0	3,093	137	1	0	0	0	3,200	142	1	0	0	3,213	143	1	0	0	3,206	142	1	0	0	3,206	142	1	0	0
P4	35W	VF	4,096	117	1	0	1	0	4,247	121	1	0	1	0	4,394	126	1	0	1	4,412	126	1	0	1	4,403	126	1	0	1	4,403	126	1	0	1
		VF	4,202	120	1	0	0	0	4,357	125	1	0	0	0	4,508	129	1	0	0	4,526	129	1	0	0	4,517	129	1	0	0	4,517	129	1	0	0
P5	48W	VF	5,567	115	1	0	1	0	5,722	119	1	0	1	0	5,872	123	1	0	1	5,896	124	1	0	1	5,894	124	1	0	1	5,894	124	1	0	1
		VF	5,711	118	1	0	0	0	5,921	122	1	0	0	0	6,127	126	1	0	0	6,151	127	1	0	0	6,149	127	1	0	0	6,149	127	1	0	0

Electrical Load

Performance Package	System Watts	100V	200V	240V	277V	347V	480V
P1 / P15W	10W	0.082	0.049	0.043	0.038	--	--
	13W	--	--	--	--	0.046	0.033
	15W	0.132	0.081	0.072	0.064	--	--
P2 / P25W	18W	--	--	--	--	0.056	0.041
	23W	0.195	0.114	0.100	0.088	--	--
	26W	--	--	--	--	0.079	0.058
P3 / P35W	23W	0.302	0.175	0.152	0.134	--	--
	38W	--	--	--	--	0.115	0.086
	48W	0.434	0.241	0.211	0.184	--	--
P5	52W	--	--	--	--	0.157	0.119