

El Paso County Assessor's Office

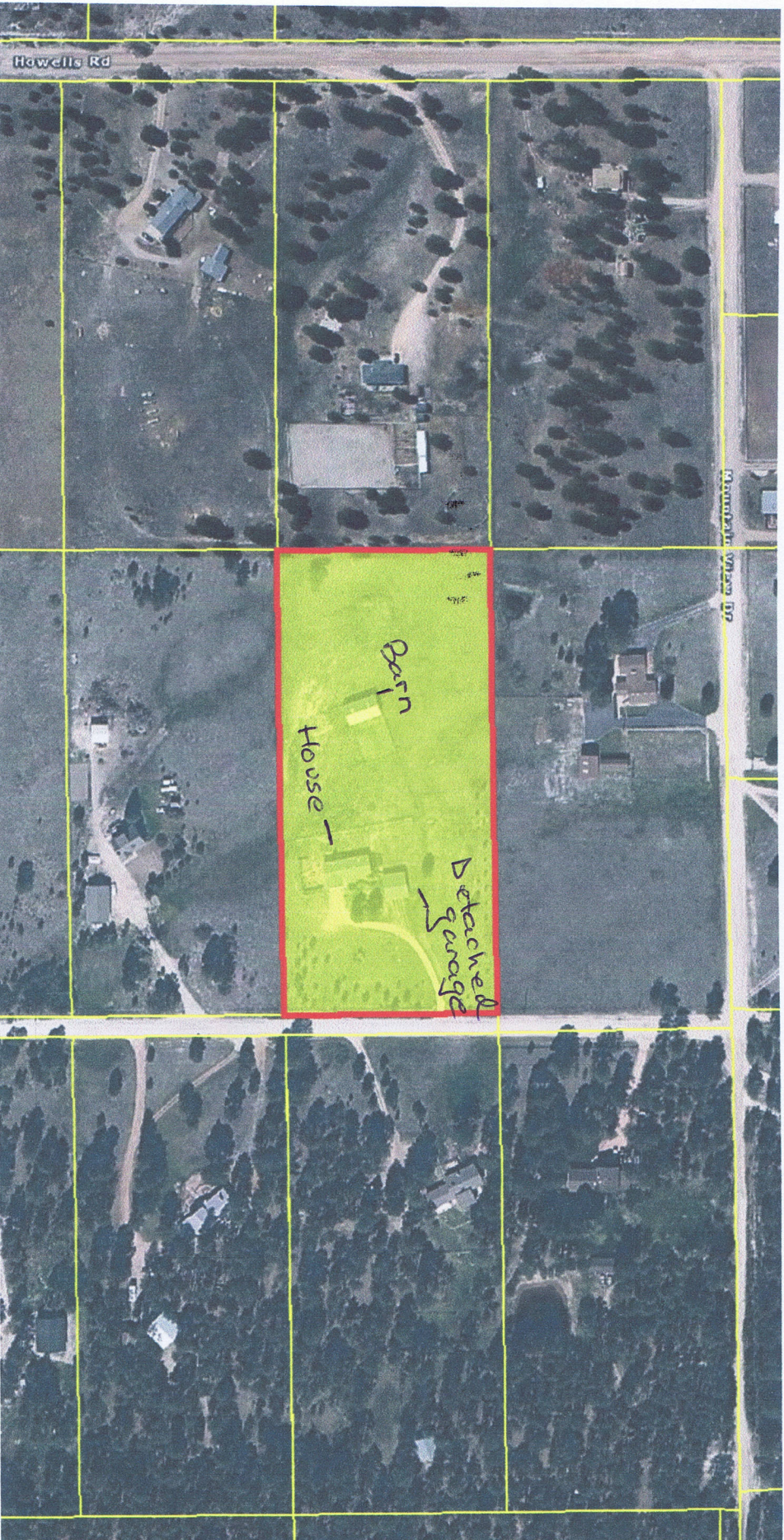
11280 FOREST EDGE DR

SCHEDULE: 6223000103

OWNER: BAIRD GREG

BAIRD MICHELE

COPYRIGHT 2010 by the Board of County Commissioners, El Paso County, Colorado. All rights reserved. No part of this document or data contained hereon may be reproduced, used to prepare derivative products, or distributed without the specific written approval of the Board of County Commissioners, El Paso County, Colorado. This document was prepared from the best data available at the time of plotting and is for internal use only. El Paso County, Colorado, makes no claim as to the completeness or accuracy of the data contained hereon.



El Paso County Assessor's Office

11280 FOREST EDGE DR

SCHEDULE: 6223000103

OWNER: BAIRD GREG

BAIRD MICHELE

COPYRIGHT 2010 by the Board of County Commissioners, El Paso County, Colorado. All rights reserved. No part of this document or data contained hereon may be reproduced, used to prepare derivative products, or distributed without the specific written approval of the Board of County Commissioners, El Paso County, Colorado. This document was prepared from the best data available at the time of plotting and is for internal use only. El Paso County, Colorado, makes no claim as to the completeness or accuracy of the data contained hereon.

