

here is the link to the updated requirements for the fire protection report:
<https://assets-planningdevelopment.elpasoco.com/wp-content/uploads/LDC-Resolution/Resolution-21-36.pdf>

Fire Protection Report

Crowe Subdivision Filing No. 1

Crowe Subdivision Filing No. 1 is located within the Tri-Lakes Monument Fire Protection District (TLMFPD) service area. The District currently serves the existing residence on the property at 15980 Roller Coaster Road and has committed to serve the proposed subdivision. The District also participates in mutual aid response with surrounding fire districts and fire departments.

TLMFPD has three full service/full time manned fire stations. The closest station to Crowe Subdivision Filing No. 1 is Station 2, located at 18460 Roller Coaster Road, which is 3.0 miles from the site via established public roads. Response times are difficult to predict due to traffic conditions, weather conditions and other factors. However, in favorable conditions, response time to the site is estimated to be 6 minutes. The department has two fire engines, one tower ladder, two ambulances, three brush trucks, five command vehicles, one snowcat, two snowmobiles and one ATV.

TLMFPD carries Class 3 ISO rating for all properties that are located within 1000 feet of a fire hydrant, but within 5 miles of a fire station. There are no fire hydrants in the vicinity of Crowe Subdivision Filing No. 1 and Station 2 is located 3.0 miles from the site. Therefore, the ISO rating for this property is 3Y.

The site of Crowe Subdivision Filing No. 1 is located in a heavily forested area. A Wildland Fire & Hazard Mitigation Plan has been prepared for the site. The necessary fire mitigation measures will be carried out with the development of the individual lots. Building permits for each structure shall be in accordance with the requirements of the Fire District as administered by the Pikes Peak Regional Building Department.

Please provide an analysis of compliance with the Fire Protection and Wildlife Mitigation section of the code, and an analysis of compliance with the applicable fire code.

Stations



Station 1

18650 Hwy 105
Monument CO, 80132



Station 2

18460 Roller Coaster Rd
Monument CO, 80132



Station 3

1855 Woodmoor Dr
Monument, CO 80132

Administration Office

The administrative office is located at 16055 Old Forest Point, Suite 102, Monument, CO 80132





 CALL US

719-484-0911
719-481-3456 (Fax)

 CONTACT US

 Administrative Office Hours

Mon - Fri: 8 am - 4:30 pm

TRI-LAKES MONUMENT FIRE PROTECTION DISTRICT

Tri-Lakes Monument Fire Protection District stands proud in protecting the citizens of the greater Tri-Lakes region.

SERVICES

- [Station Locations](#)
- [Contact](#)
- [About 911](#)
- [Find ISO Info](#)

PHYSICAL

16055 Old Forest Point, Suite 102
Monument, CO 80132





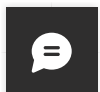
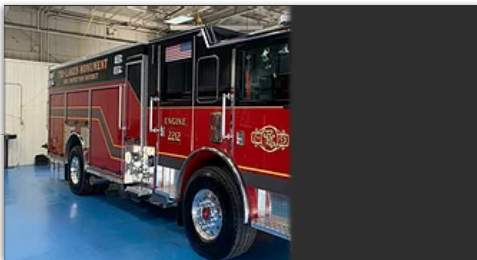
TRI-LAKES MONUMENT FIRE PROTECTION DISTRICT

Excellence Integrity Loyalty Respect Service

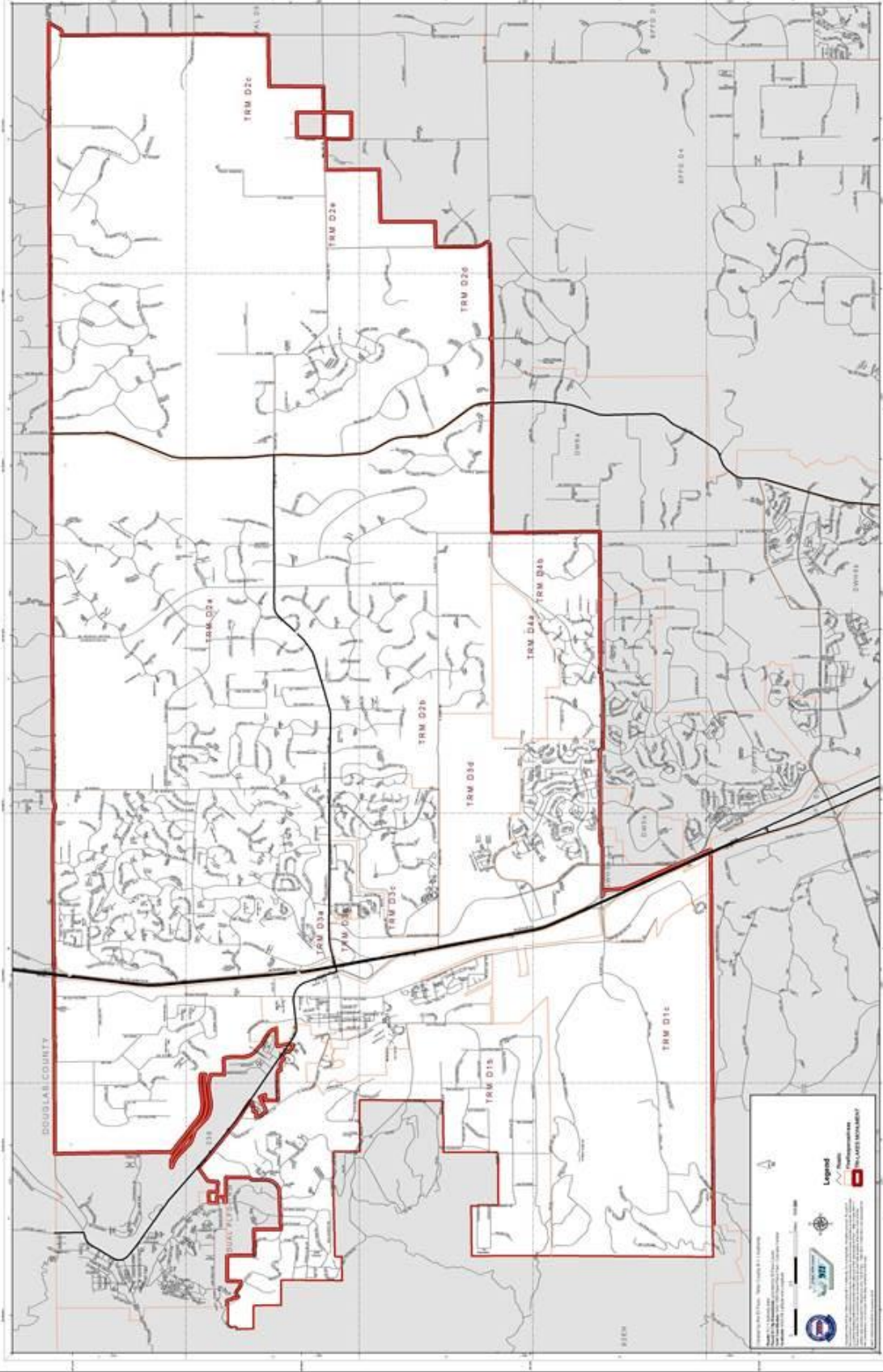
- HOME
- ABOUT
- DIVISION & SERVICES
- TRANSPARENCY
- COMMUNITY
- HOW DO I...
- CONTACT

Fleet

Daily, the District operates 2 engines, 1 tower ladder, 2 ambulances, 3 brush trucks, 5 command vehicles, 1 snowcat, 1 ATV, and 2 snowmobiles. The District also maintains a fleet of reserve apparatus.

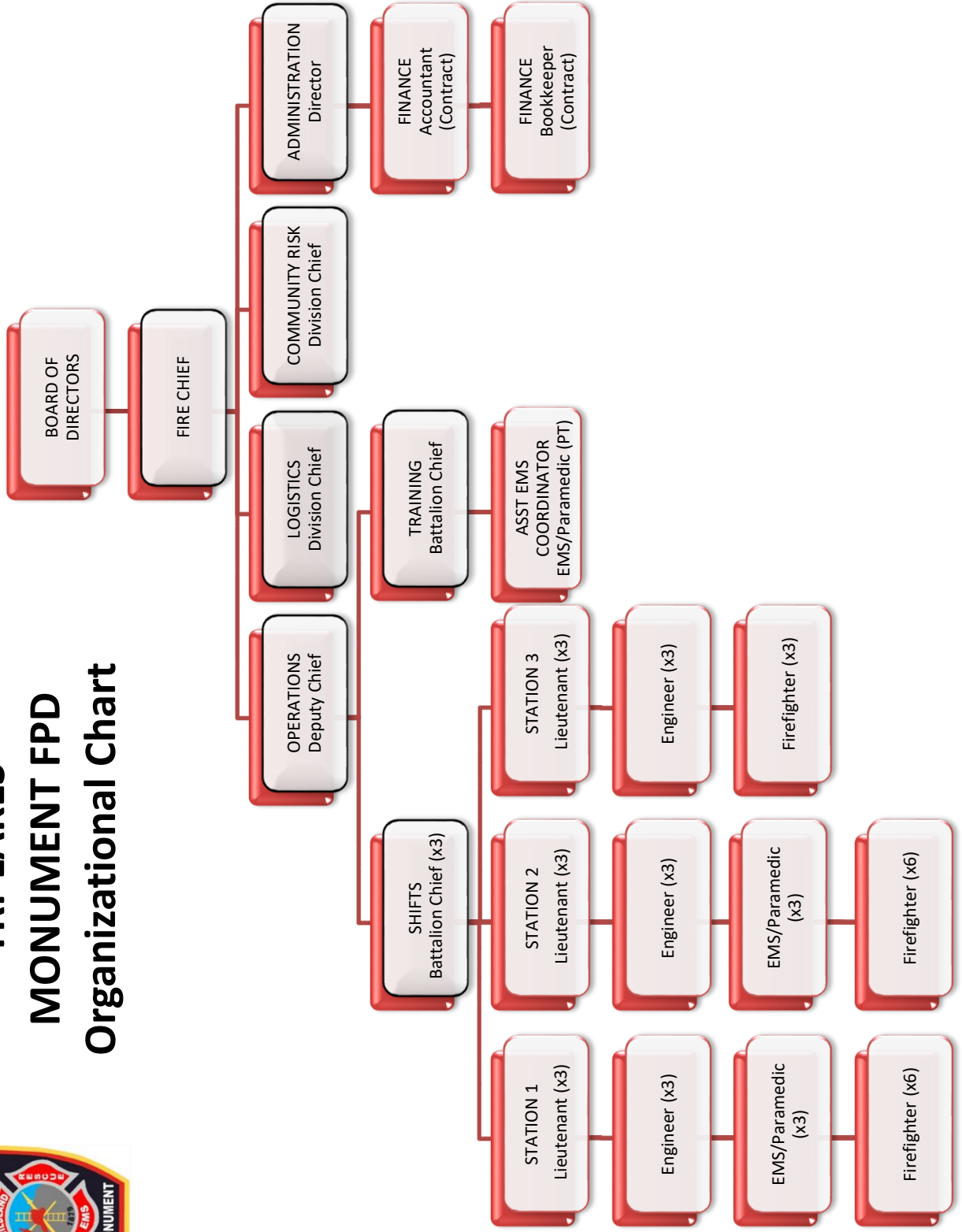


TriLakes Fire Department





TRI-LAKES MONUMENT FPD Organizational Chart



ISO Ratings

2014 Insurance Services Office Rating

For more information see www.iso.com (appendix H)

What is ISO?

ISO is a service that provides rating and other services to property and casualty insurance industries. The goal is to recognize the impact that public fire protection has on individual homeowner property fire rates given that fire protection can affect the percentage of loss value that could be expected in the event of a fire. There are 10 categories 10 meaning lowest level of fire protection to a Class 1 (Class 1 = lowest annual property insurance).

The Tri-Lakes Monument Fire Protection District uses two ratings for our fire district as of September 30, 2014, provided you are within 5 road miles of a fire station and reside within the fire district (a Tri-Lakes Monument Fire Protection District levy is on your annual property tax bill). ISO 's main criteria is mainly performance oriented meaning ratings are largely based on quantity of water a fire department crew can flow water and the duration of the water flow. Developments with cistern access can qualify as a Class 3 rating providing there is 30,000 gallons of water in the cistern.

Steps to determine your ISO rating

1. Verify with El Paso County Assessors website which fire protection district you are in.
2. Google the distance from your property to the nearest fire hydrant.
3. Google distance from your property to the nearest fire station.

Rating (See ISO Protection Class Brochure)

- Class 3 for all properties located within 1000' of a fire hydrant
- Class 3Y for all other properties

If you are beyond 5 road miles from a fire station than you have the following ratings:

- Class 10W for all properties located within 1000' from a water source
- Class 10 for all properties located farther than 1000' from a water source

Vehicle Information

Each engine and ladder truck carry three fire extinguishers (dry chemical, CO2 and water) as well as 20 gallons of foam plus 10 additional,

- Engine carries 1000 gallons of water (We have two)
 - ladder truck carries 300 gallons of water
- Total water brought from TLM units only is 2300 gallons

Mutual aid

We have mutual aid agreements with all of our surrounding fire departments.

Fire Stations

TLMFPD is a career fire department that staffs three fire stations 24-hours a day.

Station 1-18650 Hwy 105	-Ladder truck and engine
Station 2-18460 Rollercoaster Road	-Engine
Station 3-1855 Woodmoor Drive	-Engine

TRI-LAKES MONUMENT FIRE PROTECTION DISTRICT

16055 Old Forest Point, Suite 103

Monument, CO 80132

Bus: (719) 484-0911 Fax (719) 481-3456



Jamey Bumgarner, Fire Marshal

May 19, 2021

To Whom it may Concern:

The Tri-Lakes Monument Fire Protection District currently provides fire protection and emergency medical services to 70 square miles of northern El Paso County. Our current ISO rating is 3/3Y. The Crowe Subdivision located at 15980 Rollercoaster Road lies within our current district boundaries, and we will continue to provide services to the Crowe Subdivision.

Our Fire Station 2 is located at 18460 Rollercoaster Road and staffed 24 hours a day, less than 3 miles from the Crowe Subdivision, and our units will arrive within 6 minutes. The ISO rating for Crowe Subdivision will be 3Y.

Please let me know if you have additional questions.

Jamey Bumgarner

Division Chief / Fire Marshal