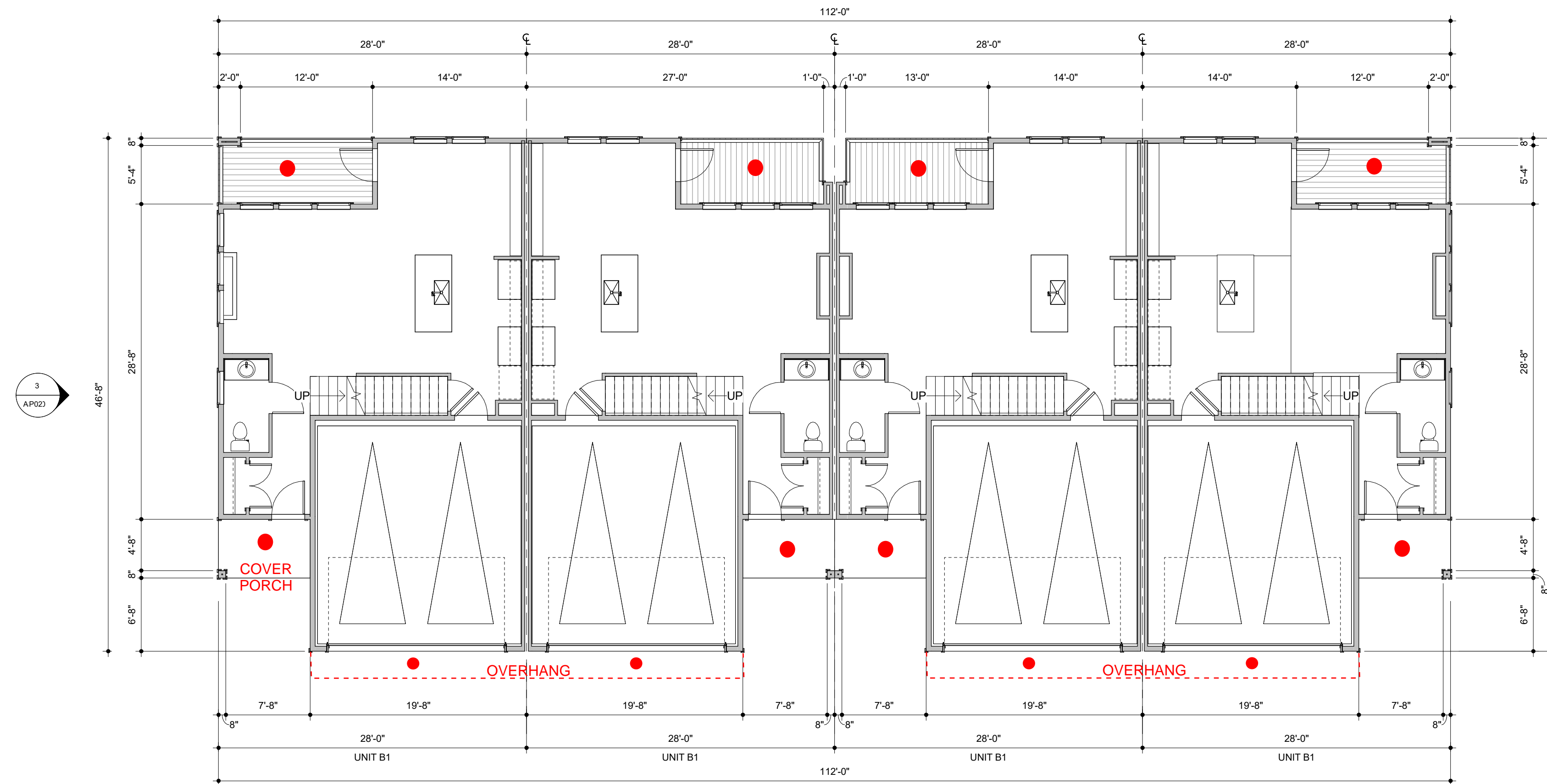




Juno 440-WH, 4" 4 inch Low Voltage Round IC Rated Recessed Trim, 50 Total Watts Halogen

UNIT B1 (2 BED W/ WALKOUT BSMT)	
Name	Area
UNIT B1 - BSMT	722 SF
UNIT B1 - LVL 1	714 SF
UNIT B1 - LVL 2	895 SF
TOTAL:	2,331 SF



1 FIRST FLOOR COMPOSITE PLAN - BUILDING TYPE 1
1/8" = 1'-0"

TOTAL CONDITIONED SF OF 4 B1 UNITS= 9,324 SF

Kimley»Horn

2024 KIMLEY-HORN AND ASSOCIATES, INC.
2 North Nevada Avenue, Suite 900
Colorado Springs, Colorado 80903 (719) 453-0180




DESIGNED BY: XXX
DRAWN BY: XXX
CHECKED BY: XXX
DATE: 08/XX/2024

WINDEMERE FILING 2 MULTI-FAMILY
SITE DEVELOPMENT PLAN

PROJECT NO.
196160000

SHEET



MATERIAL LEGEND	
	CEMENTITIOUS SIDING - 16 G. BOARD & BATTEN
	CEMENTITIOUS SIDING - 8" REVEAL LAP - ACCENT COLOR TBD
	ASPHALT ROOF SHINGLES

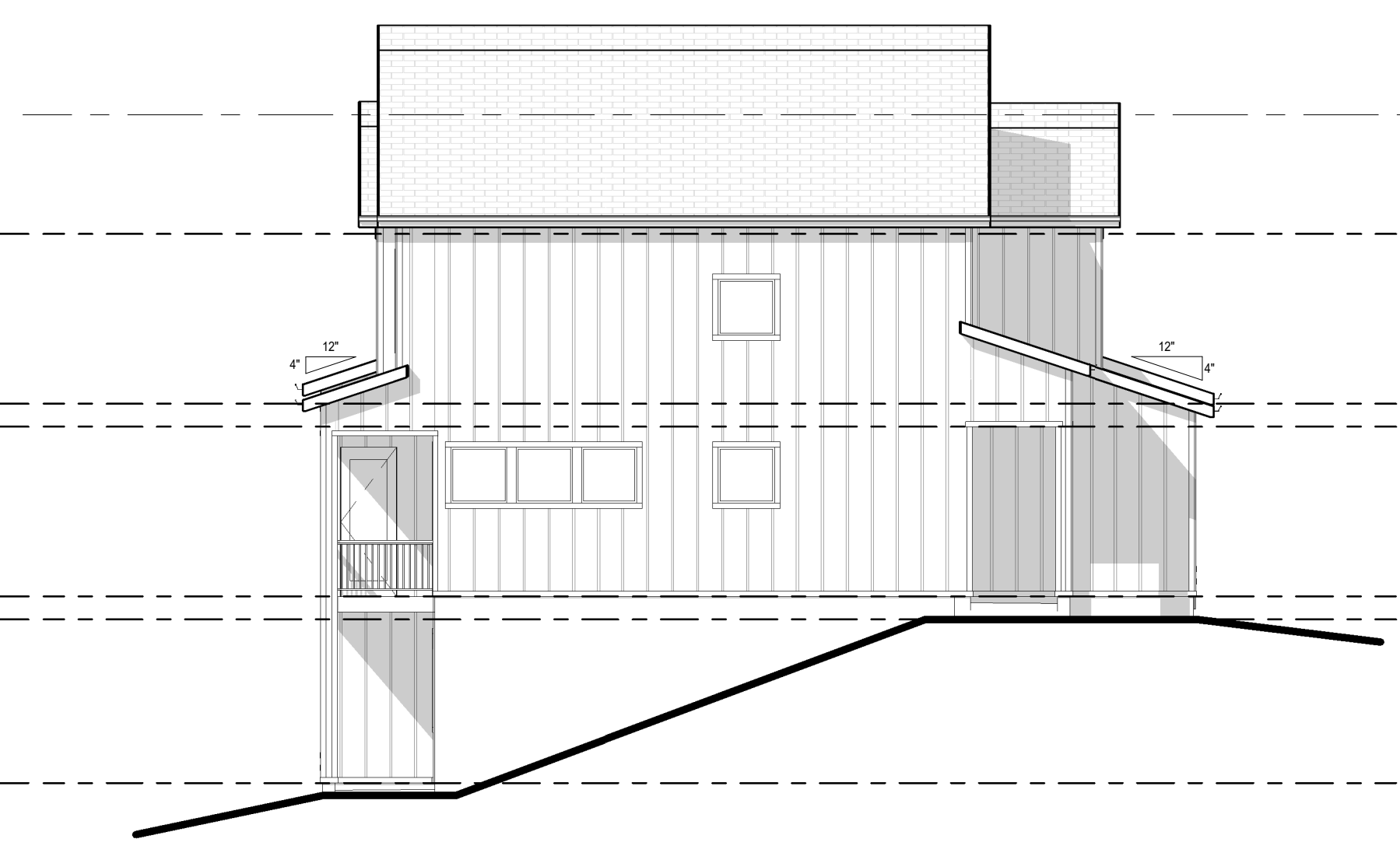
NO.	REVISION	BY	DATE	APPR

Kimley»Horn
 2024 KIMLEY-HORN AND ASSOCIATES, INC.
 2 North Nevada Avenue, Suite 900
 Colorado Springs, Colorado 80903 (719) 453-0180

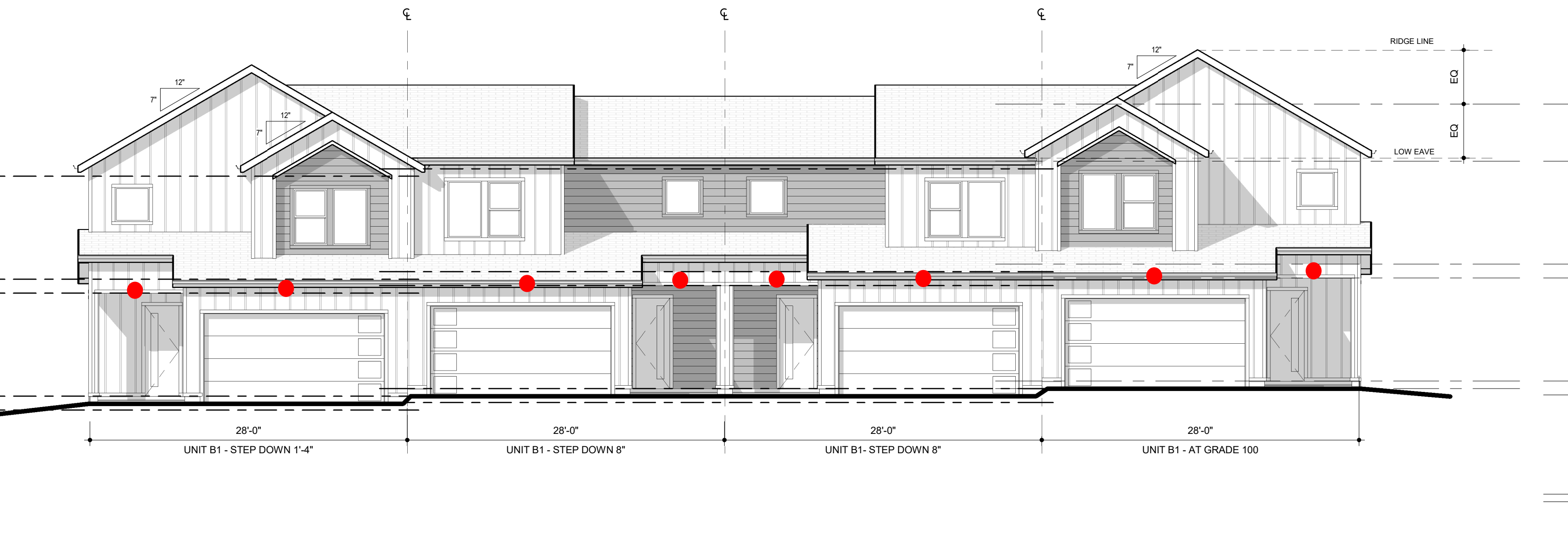
DESIGNED BY: XXX
 DRAWN BY: XXX
 CHECKED BY: XXX
 DATE: 08/XX/2024



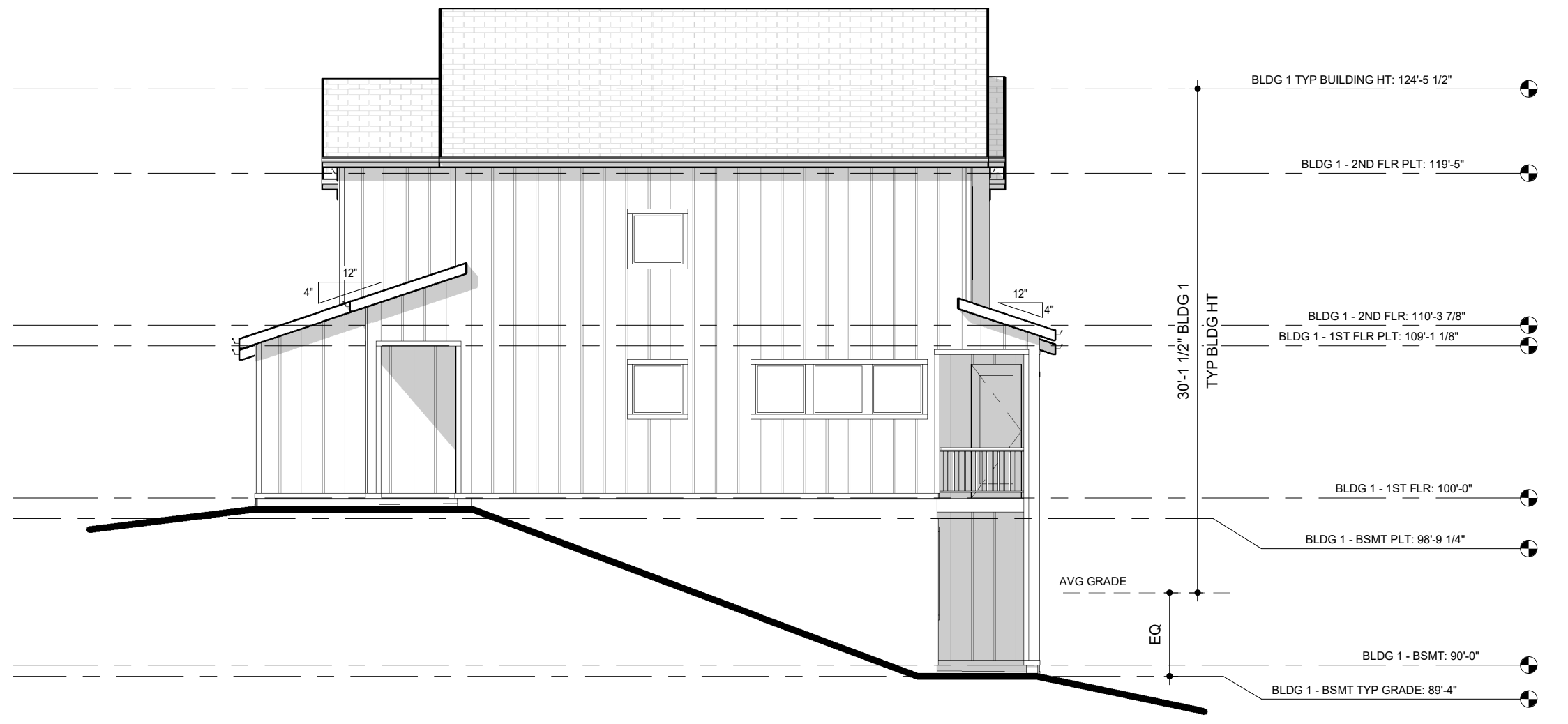
4 REAR ELEVATION - BUILDING TYPE 1
 1/8" = 1'-0"



3 LEFT ELEVATION - BUILDING TYPE 1
 1/8" = 1'-0"



2 FRONT ELEVATION - BUILDING TYPE 1
 1/8" = 1'-0"



1 RIGHT ELEVATION - BUILDING TYPE 1
 1/8" = 1'-0"

WINDEMERE FILING 2 MULTI-FAMILY
 SITE DEVELOPMENT PLAN

PROJECT NO.
 196160000

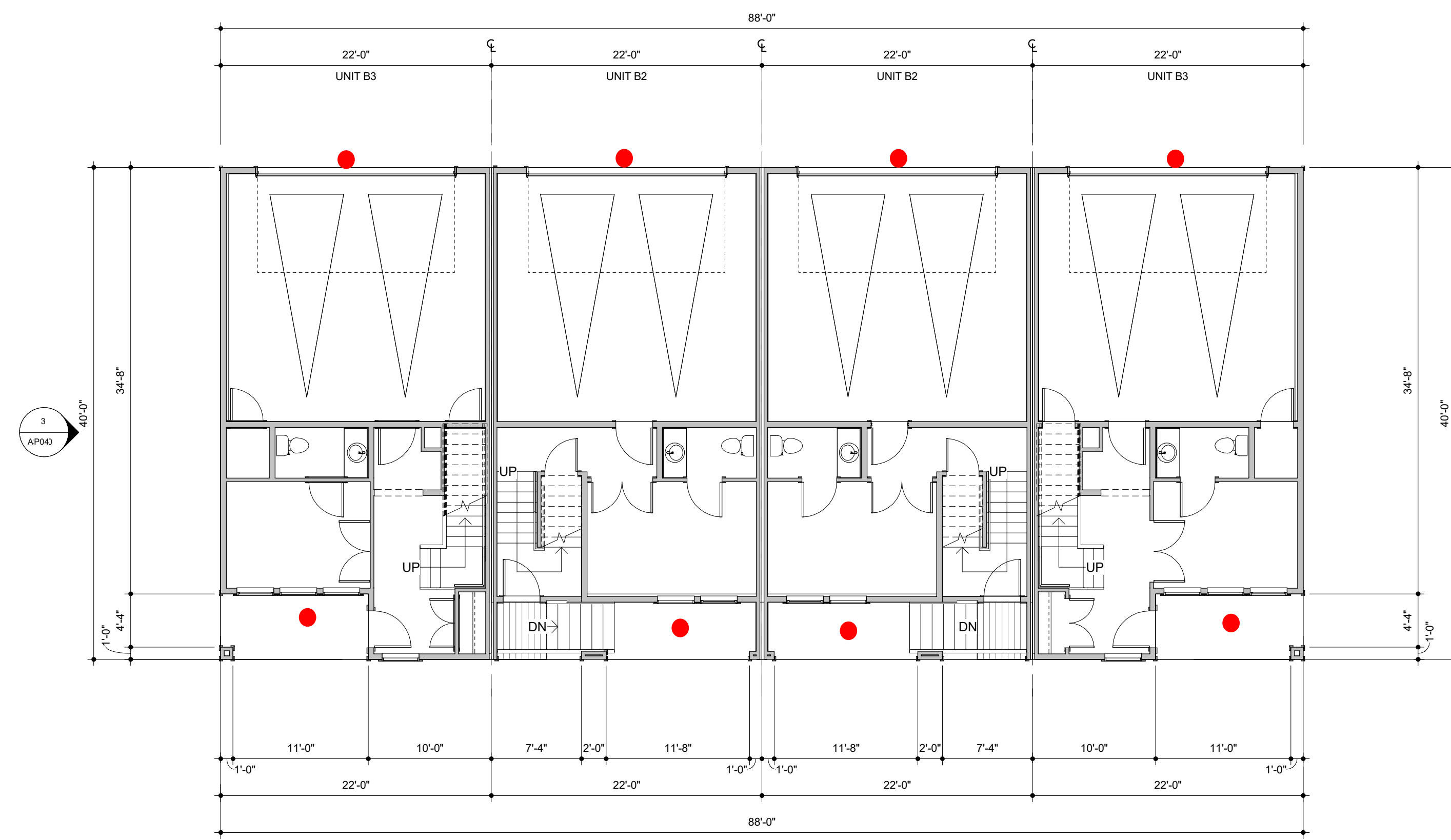
SHEET



X:\2023\223109_Windemere Townhomes\Revit\Projects\Kimley-Horn_SDP_Titles\block_KEP_EDIT.dwg Kellen Kyger - KEP/HART

UNIT B2 (3 BED W SPLIT LEVEL ENTRY)	
Name	Area
UNIT B2 - LVL 1	323 SF
UNIT B2 - LVL 2	780 SF
UNIT B2 - LVL 3	756 SF
TOTAL:	1,859 SF

UNIT B3 (3 BED)	
Name	Area
UNIT B3 - LVL 1	361 SF
UNIT B3 - LVL 3	792 SF
UNIT B3-LVL 2	809 SF
TOTAL:	1,963 SF



1 FIRST FLOOR COMPOSITE PLAN - BUILDING TYPE 2 PLANNING
1/8" = 1'-0"

TOTAL CONDITIONED SF OF 2x B2 UNITS AND 2x B3 UNITS= 7,644 SF

NO.	REVISION	BY	DATE	APPR

Kimley»Horn
2024 KIMLEY-HORN AND ASSOCIATES, INC.
2 North Nevada Avenue, Suite 900
Colorado Springs, Colorado 80903 (719) 453-0180

DESIGNED BY: XXX
DRAWN BY: XXX
CHECKED BY: XXX
DATE: 08/XX/2024

WINDEMERE FILING 2 MULTI-FAMILY
SITE DEVELOPMENT PLAN

PROJECT NO.
196160000

SHEET



X:\2023\223109_Windemere_Townhomes\Revit\Projects\Kimley-Horn_SDP_Titleblock_KEP_EDITS.dwg Kellen Kyger - KPHART

MATERIAL LEGEND	
	CEMENTITIOUS SIDING - 16 G.C. BOARD & BATTEN
	CEMENTITIOUS SIDING - 8' REVEAL LAP - ACCENT COLOR TBD
	ASPHALT ROOF SHINGLES



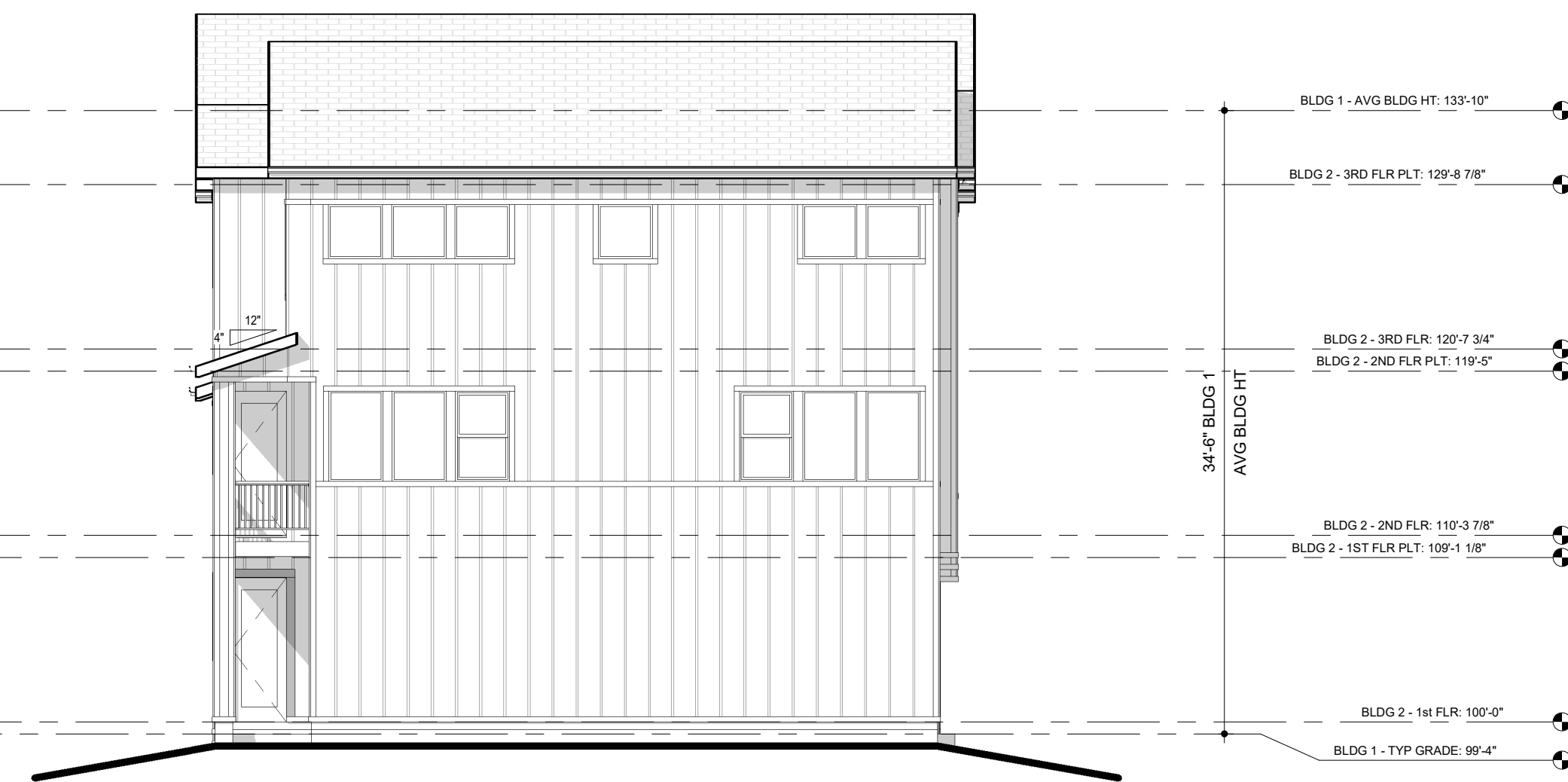
4 REAR ELEVATION - BUILDING TYPE 2
1/8" = 1'-0"



3 LEFT ELEVATION - BUILDING TYPE 2
1/8" = 1'-0"



2 FRONT ELEVATION - BUILDING TYPE 2
1/8" = 1'-0"



1 RIGHT ELEVATION - BUILDING TYPE 2
1/8" = 1'-0"



NO.	REVISION	BY	DATE	APPR

Kimley-Horn
 2024 KIMLEY-HORN AND ASSOCIATES, INC.
 2 North Nevada Avenue, Suite 900
 Colorado Springs, Colorado 80903 (719) 453-0180

DESIGNED BY: XXXX
 DRAWN BY: XXXX
 CHECKED BY: XXXX
 DATE: 08/XX/2024

**WINDEMERE FILING 2 MULTI-FAMILY
 SITE DEVELOPMENT PLAN**

PROJECT NO. 196160000
SHEET